

TOP SECRET

Approved For Release 2002/01/02 : CIA-RDP78T04759A009400010004-0

PHOTOGRAPHIC INTERPRETATION MEMORANDUM



**CHINESE COMMUNIST
NAVAL INSTALLATIONS NEAR
MACAO AND HONG KONG
CHINA**

Declass Review by NIMA/DOD

TCS-20129/69

MAY 1969

COPY 120

3 PAGES

handle via **TALENT-KEYHOLE** control only

GROUP 1 EXCLUDED FROM
AUTOMATIC DOWNGRADING
AND DECLASSIFICATION

Approved For Release 2002/01/02 : CIA-RDP78T04759A009400010004-0

TOP SECRET

WARNING

This document contains information affecting the national security of the United States within the meaning of the espionage laws U. S. Code Title 18, Sections 793 and 794. The law prohibits its transmission or the revelation of its contents in any manner to an unauthorized person, as well as its use in any manner prejudicial to the safety or interest of the United States or for the benefit of any foreign government to the detriment of the United States. It is to be seen only by personnel especially indoctrinated and authorized to receive information in the designated control channels. Its security must be maintained in accordance with regulations pertaining to TALENT-KEYHOLE Control System.

FORM 100-10 (REV. 1-1953)

CHINESE COMMUNIST NAVAL INSTALLATIONS NEAR MACAO AND HONG KONG

Four Chinese Communist naval facilities, collocated with island defenses in the seaward approaches to Macao and Hong Kong, provide the bases from which naval units have in the past conducted harassment of American naval and merchant vessels entering Hong Kong. These four installations (Figure 1) function strictly as advance bases, capable of providing limited logistics support, but rely on the larger naval bases at Huangpu (25-05-05N 113-24-54E) and at Kuangchou (22-16-55N 113-04-35E) for maintenance and heavy support for the patrol boats.

The Nansha Naval Facility (Figure 2), while appearing to be incomplete, is the largest of the four installations. It has a more extensive berthing area than the three other facilities and has seven large storage tunnels located near the base facilities.

The probable naval facility at Tawan Shan (Figure 3) is the second largest of the installations. Sharing a small harbor with a fishing village, this facility is comprised of a breakwater and breasting platform berthing area and a small support complex. Wailingting Naval Facility (Figure 4) and Niutou Naval Facility (Figure 5) both have only a small breasting platform for berthing and small support areas.

Each of these installations is located on a small island seaward of Hong Kong and Macao and is linked by road to extensive defensive positions on its island. In each instance that naval vessels have been observed, the vessels were motor gun boats (PGM) of Shanghai size or smaller.

NPIC Project: 111106NA

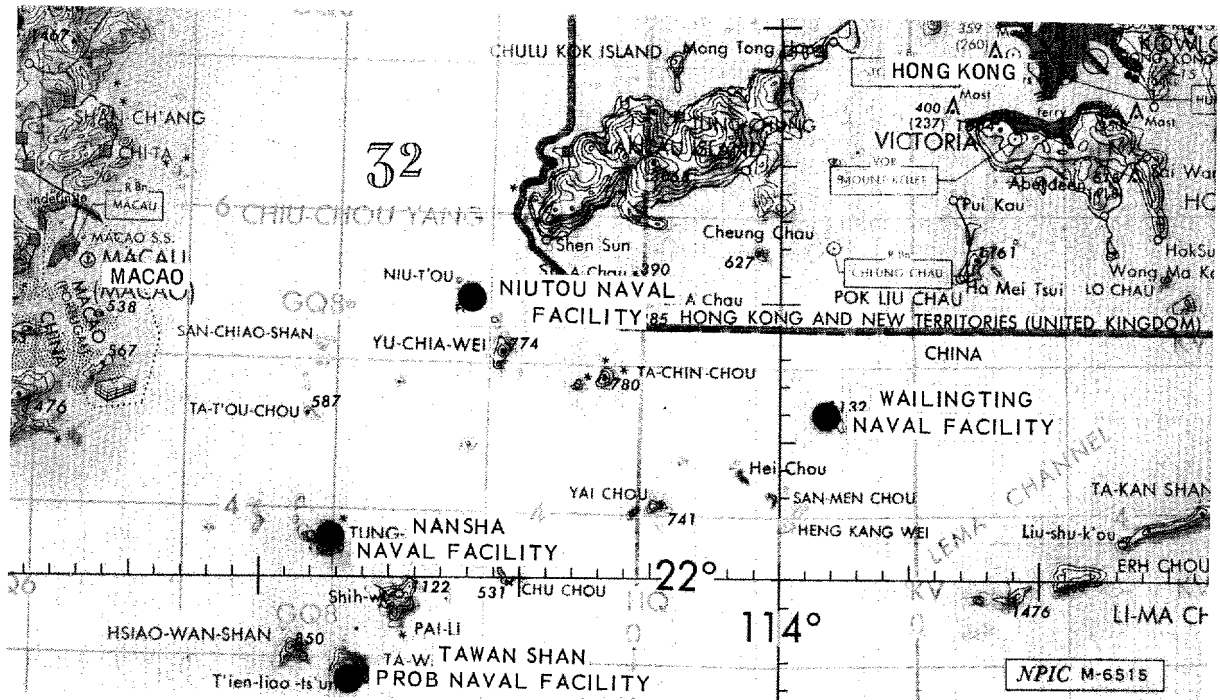
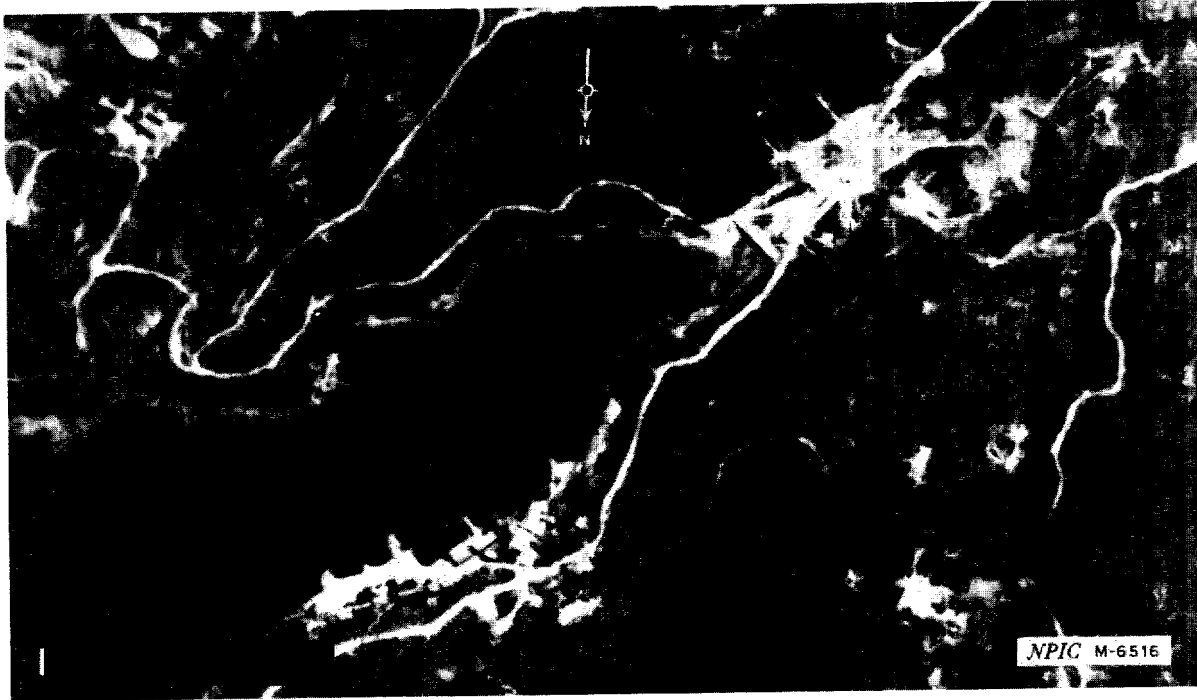
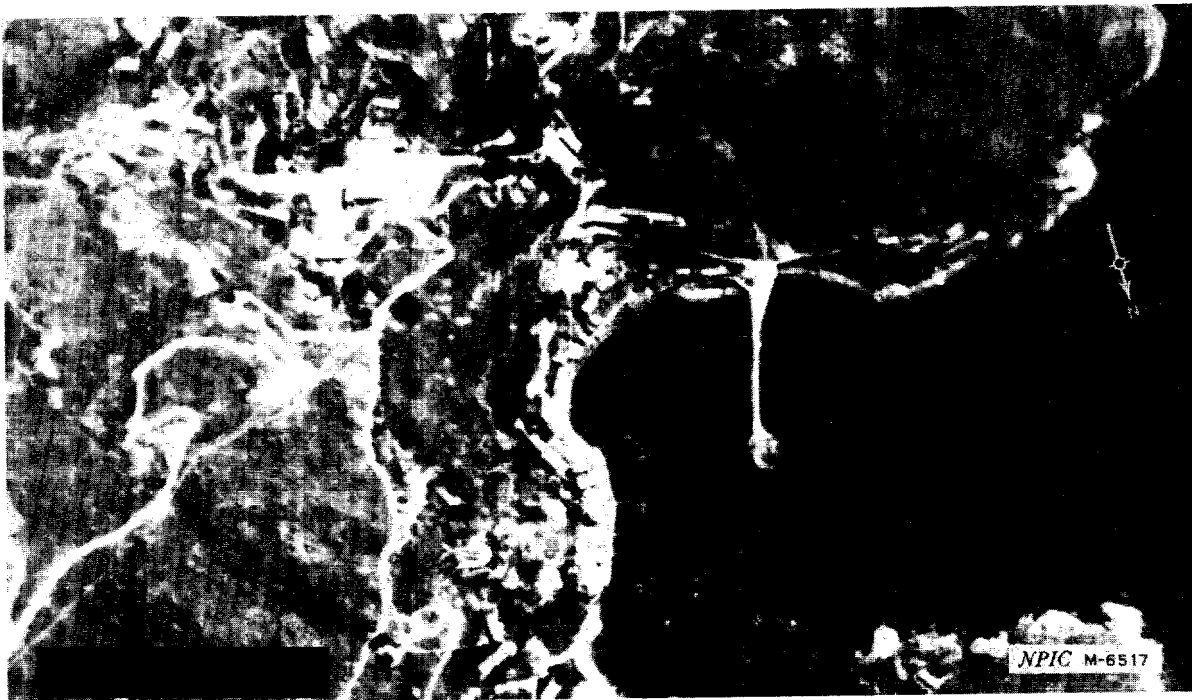


FIGURE 1. LOCATION OF NAVAL FACILITIES



25X1D

FIGURE 2. NANSHA NAVAL FACILITY



25X1D

FIGURE 3. TAWAN SHAN PROBABLE NAVAL FACILITY

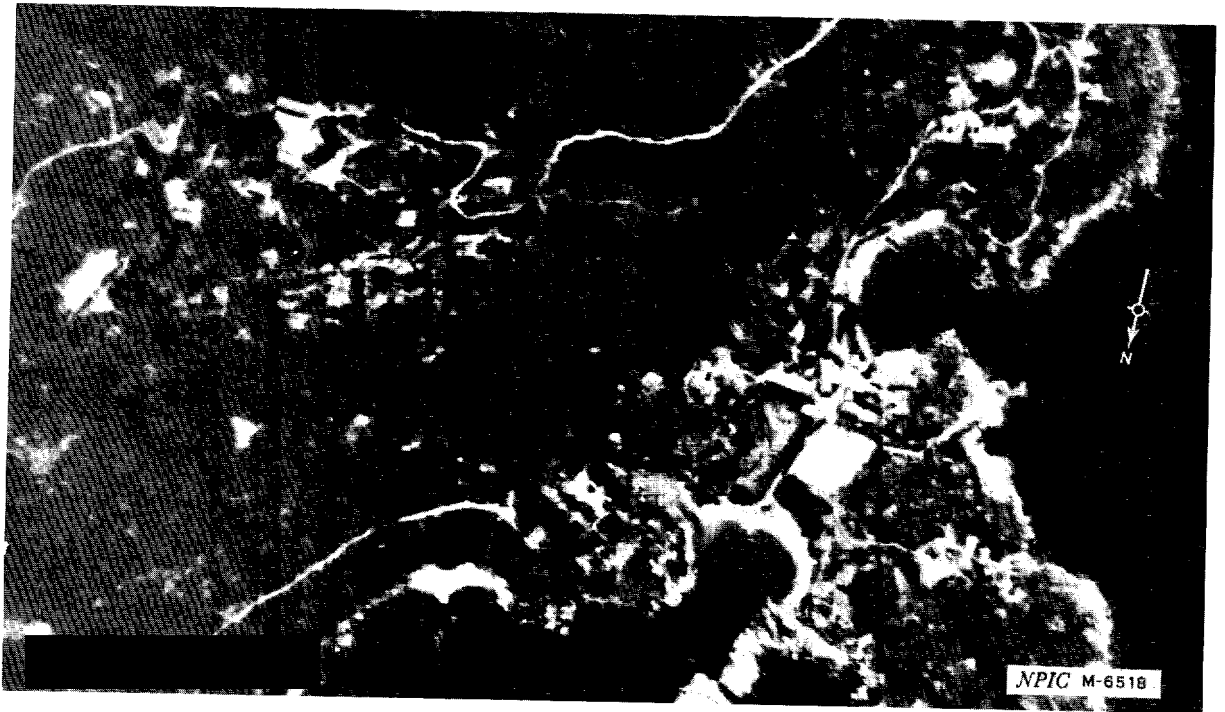


FIGURE 4. WAILINGTING NAVAL FACILITY



FIGURE 5. NIUTOU NAVAL FACILITY

Approved For Release 2002/01/02 : CIA-RDP78T04759A009400010004-0

TOP SECRET

Approved For Release 2002/01/02 : CIA-RDP78T04759A009400010004-0

TOP SECRET