

TOP SECRET

BRIEF

PHOTOGRAPHIC INTERPRETATION REPORT



KALININGRAD
PROBABLE LONG RANGE
SAM LAUNCH COMPLEX
USSR

TCS-80508/67

AUGUST 1967

COPY 116

2 PAGES

handle via **TALENT-KEYHOLE** control only

Declass Review by NIMA/DOD

GROUP 1 EXCLUDED FROM
AUTOMATIC DOWNGRADING
AND DECLASSIFICATION

TOP SECRET

WARNING

This document contains information affecting the national security of the United States within the meaning of the espionage laws U. S. Code Title 18, Sections 793 and 794. The law prohibits its transmission or the revelation of its contents in any manner to an unauthorized person, as well as its use in any manner prejudicial to the safety or interest of the United States or for the benefit of any foreign government to the detriment of the United States. It is to be seen only by personnel especially indoctrinated and authorized to receive information in the designated control channels. Its security must be maintained in accordance with regulations pertaining to TALENT-KEYHOLE Control System.

TOP SECRET RUFF

ICS-80508/67
August 1967

25X1A

NATIONAL PHOTOGRAPHIC INTERPRETATION CENTER

NAME

Kaliningrad Probable Long Range SAM Launch Complex

25X1D

COUNTRY	GEO COORDINATES	WAC	NPIC NO	COMOR NO
USSR	54-40N 021-01E	0618	17-J3	None

REFERENCES

[REDACTED]

The Kaliningrad Probable Long Range SAM (PLRS) Launch Complex is 18 nm east of Kaliningrad and 112 nm south of the Liepaja PLRS Launch Complex at 54-40N 021-01E. The complex was first observed and identified on KEYHOLE photography of [REDACTED] and can be negated on [REDACTED]. During this interval, construction progressed at a rapid pace. The launch area main road, access roads, and service roads for 3 launch sites are under construction. Grading for launch positions is underway. Positions for the tracking/guidance facility are in an early-to-mid stage of construction. Double security fencing encloses the complex.

25X1D

25X1D

The configuration of the complex resembles the 3-launch-site patterns seen at the Kalinin and Pereslavl-Zalesskiy PLRS Launch Complexes.

Orientation of the complex is [REDACTED]. Elevation is approximately 50 feet above mean sea level.

25X1D

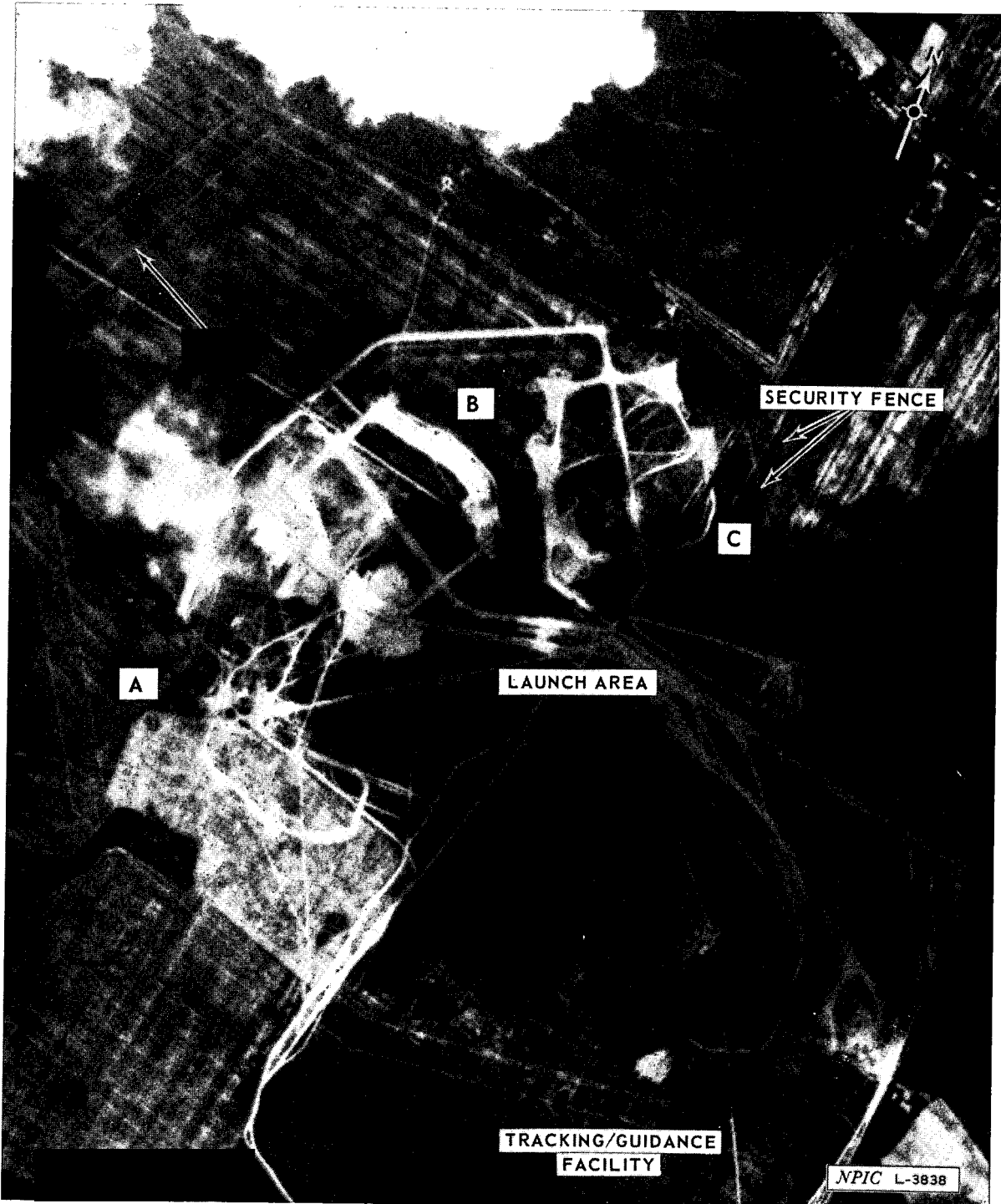
No evidence is seen of any construction activity in the missile-handling facility or the support areas.

Scattered clouds and cloud shadow limit interpretation.

TOP SECRET RUFF

TCS-80508/67
August 1967

25X1D



25X1D