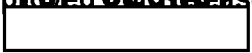


25X1

TOP SECRET
Approved For Release 2003/11/21 : CIA-RDP78T04759A005000010015-6

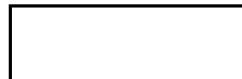


PHOTOGRAPHIC INTERPRETATION REPORT



SAM INSTALLATION SERIES

Declass Review by NIMA/DOD



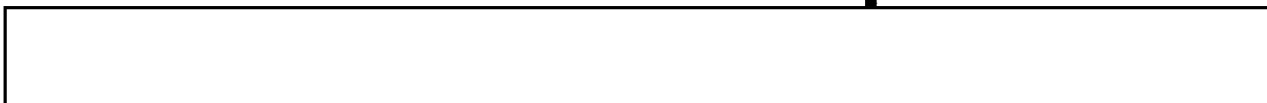
25X1

OCTOBER 1966

COPY 111

1 PAGE

25X1



GROUP 1 EXCLUDED FROM
AUTOMATIC DOWNGRADING
AND DECLASSIFICATION

Approved For Release 2003/11/21 : CIA-RDP78T04759A005000010015-6



25X1

25X1

Approved For Release 2003/11/21 : CIA-RDP78T04759A005000010015-6

Approved For Release 2003/11/21 : CIA-RDP78T04759A005000010015-6

25X1

TOP SECRET

Approved For Release 2003/11/21 : CIA-RDP78T04759A005000010015-6

25X1

25X1

NATIONAL PHOTOGRAPHIC INTERPRETATION CENTER

INSTALLATION NAME Shen-yang SAM Site B05-2 China	GEO COORDS 41-59-45N 123-44-15E	PUBLICATION DATE October 1966
	NPIC TARGET NO 0290-55M1	BE NO

25X1D

25X1A



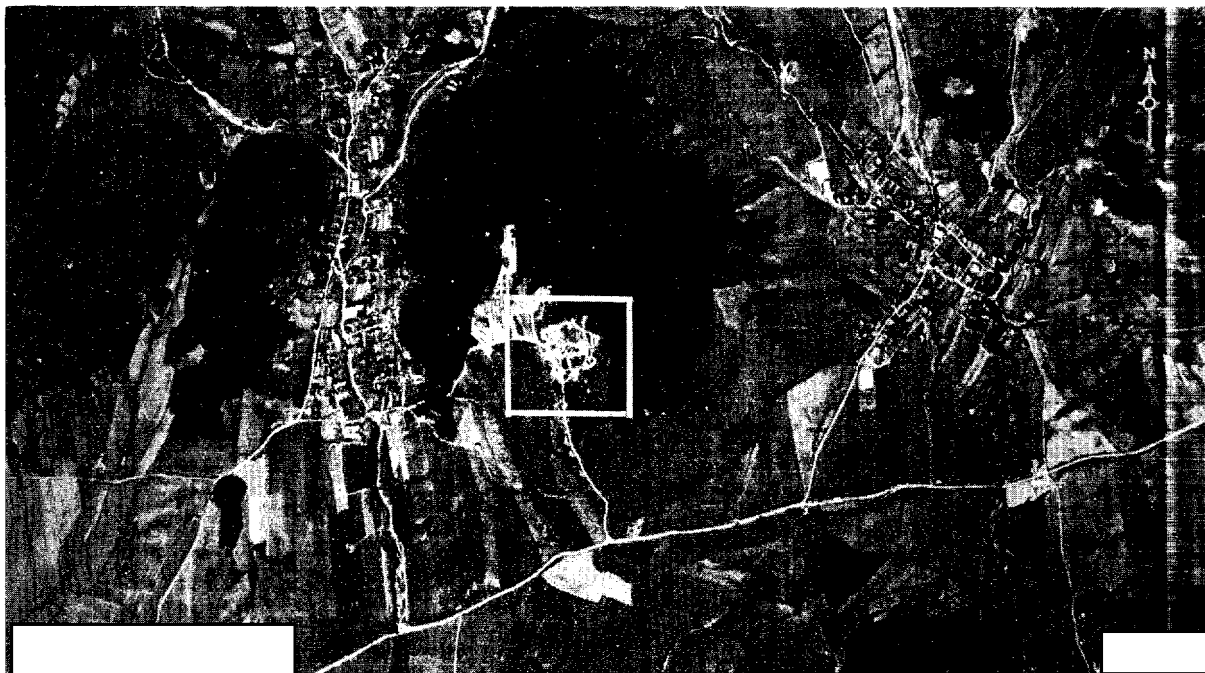
25X1D

	AD AREA CH	NPIC PROJECT 11005/66
REFERENCES: USATC, Series 200, Sheet M0290-11HL, 4th ed, Jan 66 (S/ [redacted])		
(TS [redacted])		REQUIREMENT USIB-64

25X1

25X1C
25X1

Location: 18.2 nm NE of Shen-yang
 Configuration: Irregular
 Status: Complete
 Launch Facilities: 6 positions, partially revetted, each occupied by a launcher and a probable canvas-covered missile transporter
 Electronic Facilities: Central guidance area is partially revetted, occupied; probable acquisition radar position approximately 450 ft north of launch area
 Site Support Facilities: Approximately 30 tents 500 ft NNW of launch area; no missile-hold positions
 Security Measures: None observed
 Remarks: No AAA sites within 1 nm



25X1D

25X1

25X1

25X1

25X1

Approved For Release 2003/11/21 : CIA-RDP78T04759A005000010015-6

Approved For Release 2003/11/21 : CIA-RDP78T04759A005000010015-6