

PHOTOGRAPHIC INTERPRETATION REPORT



**IMENI GASTELLO
ICBM COMPLEX
USSR**

LAUNCH SITE 20

TCS-80847/66

SEPTEMBER 1966

COPY **101**

1 PAGE

handle via **TALENT-KEYHOLE** control only

Declass Review by
NIMA / DoD

GROUP 1 EXCLUDED FROM
AUTOMATIC DOWNGRADING
AND DECLASSIFICATION

TOP SECRET

WARNING

This document contains information affecting the national security of the United States within the meaning of the espionage laws U. S. Code Title 18, Sections 793 and 794. The law prohibits its transmission or the revelation of its contents in any manner to an unauthorized person, as well as its use in any manner prejudicial to the safety or interest of the United States or for the benefit of any foreign government to the detriment of the United States. It is to be seen only by personnel especially indoctrinated and authorized to receive information in the designated control channels. Its security must be maintained in accordance with regulations pertaining to TALENT-KEYHOLE Control System.

Handle Via
Talent-KEYHOLE
Control System Only

Approved For Release 2001/09/01 : CIA-RDP78T04759A004800010018-6

TOP SECRET RUFF

TCS-80847/66
September 1966

NATIONAL PHOTOGRAPHIC INTERPRETATION CENTER

NAME

Imeni Gastello ICBM Complex, Launch Site 20

COUNTRY	GEO COORDINATES	WAC	BE NO	NPIC NO	COMOR NO
USSR	51-24N 66-15E	0237	[REDACTED]	23-X	[REDACTED]

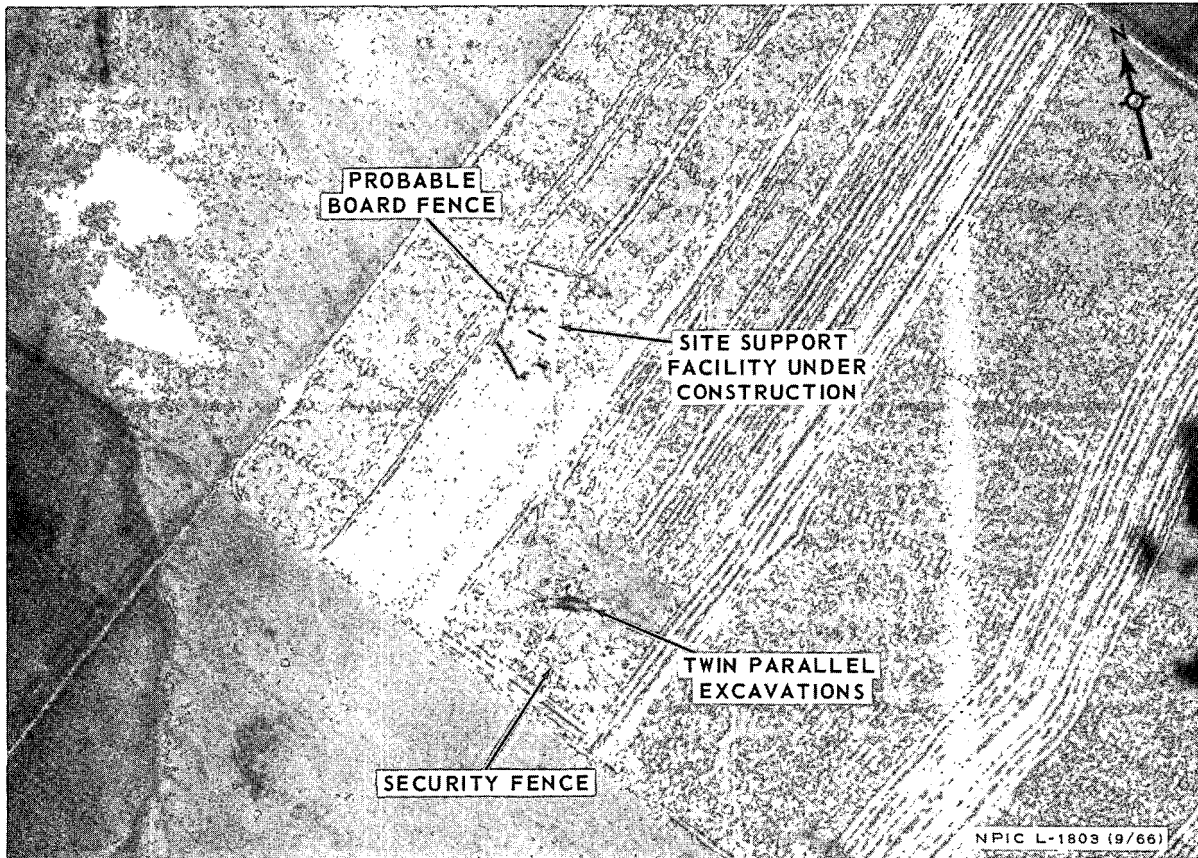
REFERENCES

Location: Approximately 17 nm north of complex support facility

Type: IIIC

Stage of Construction: Early

The launch site is situated in a cultivated field and consists of twin parallel excavations. The site support facility is under construction approximately 1,500 ft to the north and has what appears to be a board fence on the north, east, and west sides. The launch site is surrounded by a single security fence.



Approved For Release 2001/09/01 : CIA-RDP78T04759A004800010018-6

TOP SECRET RUFF

Handle Via
Talent-KEYHOLE
Control System Only