

TOP SECRET

PHOTOGRAPHIC INTERPRETATION REPORT



SAM INSTALLATION SERIES

[Redacted]

25X1

AUGUST 1966

COPY 101

1 PAGE

25X1

[Redacted]

GROUP 1 EXCLUDED FROM
AUTOMATIC DOWNGRADING
AND DECLASSIFICATION

Declass Review by NIMA/DOD

TOP SECRET

25X1

Approved For Release 2003/12/19 : CIA-RDP78T04759A004600010004-3

Approved For Release 2003/12/19 : CIA-RDP78T04759A004600010004-3

25X1

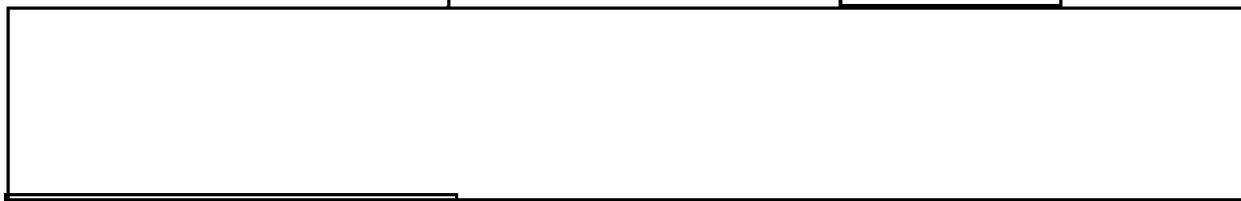
25X1

NATIONAL PHOTOGRAPHIC INTERPRETATION CENTER

INSTALLATION NAME Tanta SAM Site C05-2 Egypt	GEO COORDS 31-04-03N 031-19-54E	PUBLICATION DATE August 1966
	NPIC TARGET NO 0447-94	

25X1

25X1



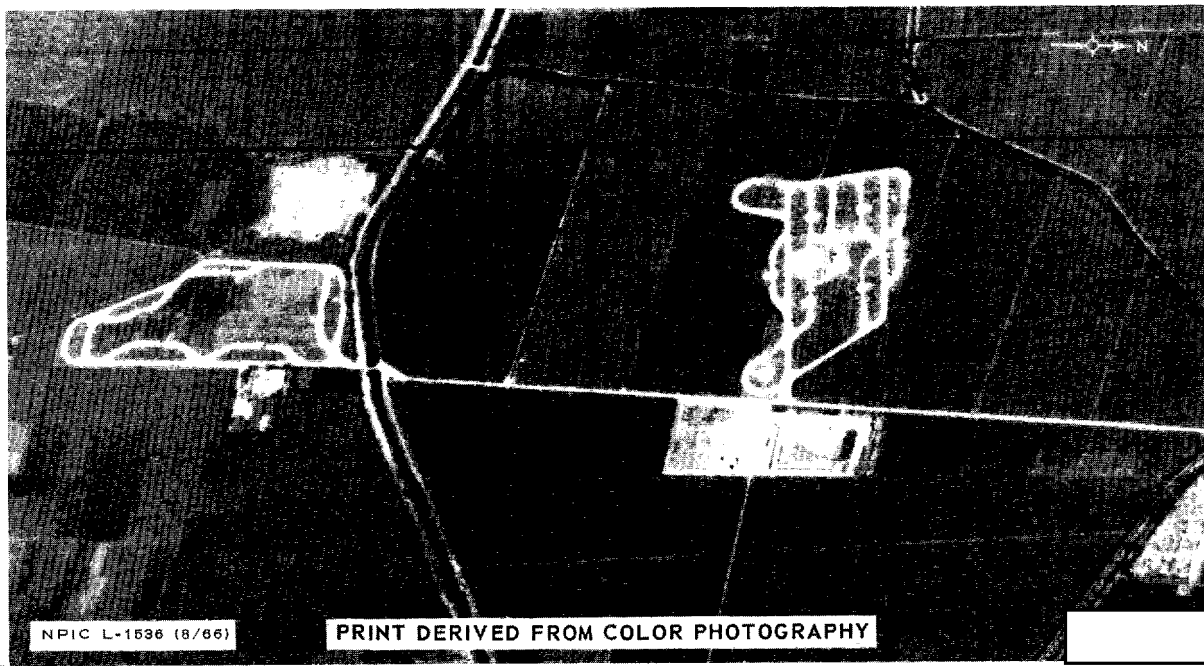
25X1

	AD AREA EG	NPIC PROJECT 11005/66
--	---------------	--------------------------

25X1

REFERENCES
USATC, Series 200, Sheet S0447-7HL, 1st ed, Feb 63 (S); NPIC/R-926/64 (TS
[Redacted] REQUIREMENT USIB-64

Location: 24 nm NE of Tanta
 Configuration: Irregular
 Status: Complete
 Launch Facilities: 6 positions, revetted, 5 occupied by possible launchers,
 1 unoccupied
 Electronic Facilities: Central guidance area is revetted, occupied by at
 least 1 van
 Site Support Facilities: No buildings; 3 missile-hold positions, revetted,
 occupancy undetermined (each is covered or contains a building)
 Security Measures: None
 Remarks: 6 drive-through buildings approximately 3,500 ft S of launch
 area. No AAA sites observed within 1 nm

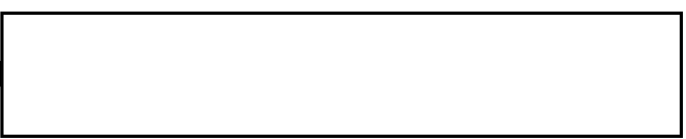


NPIC L-1536 (8/66)

PRINT DERIVED FROM COLOR PHOTOGRAPHY

25X1

TOP SECRET



25X1

TOP SECRET

TOP SECRET