

~~TOP SECRET~~

6091



PHOTOGRAPHIC INTERPRETATION REPORT



TATISHCHEVO ICBM COMPLEX USSR

PROBABLE LAUNCH SITE 72

TCS-80393/66

MAY 1966

COPY 13 ILLEGIB

1 PAGE

handle via **TALENT-KEYHOLE** control only

DECLASS REVIEW by NIMA/DOD

GROUP 1 EXCLUDED FROM
AUTOMATIC DOWNGRADING
AND DECLASSIFICATION

~~TOP SECRET~~

WARNING

This document contains information affecting the national security of the United States within the meaning of the espionage laws U. S. Code Title 18, Sections 793 and 794. The law prohibits its transmission or the revelation of its contents in any manner to an unauthorized person, as well as its use in any manner prejudicial to the safety or interest of the United States or for the benefit of any foreign government to the detriment of the United States. It is to be seen only by personnel especially indoctrinated and authorized to receive information in the designated control channels. Its security must be maintained in accordance with regulations pertaining to TALENT-KEYHOLE Control System.

Handle Via
Talent-KEYHOLE
Control System Only

Approved For Release 2001/09/01 : CIA-RDP78T04759A004000010084-1

TOP SECRET RUFF

80393/65
May 1966

NATIONAL PHOTOGRAPHIC INTERPRETATION CENTER

NAME

Tatishchevo ICBM Complex, Probable Launch Site 72

COUNTRY	GEO COORDINATES	WAC	BE NO	NPIC NO	COMOR NO
USSR	51-39N 45-14E	0235	[REDACTED]		

REFERENCES

25X1D

25X1A

[REDACTED]

Location: Approximately 12 nm WSW of the complex support facility

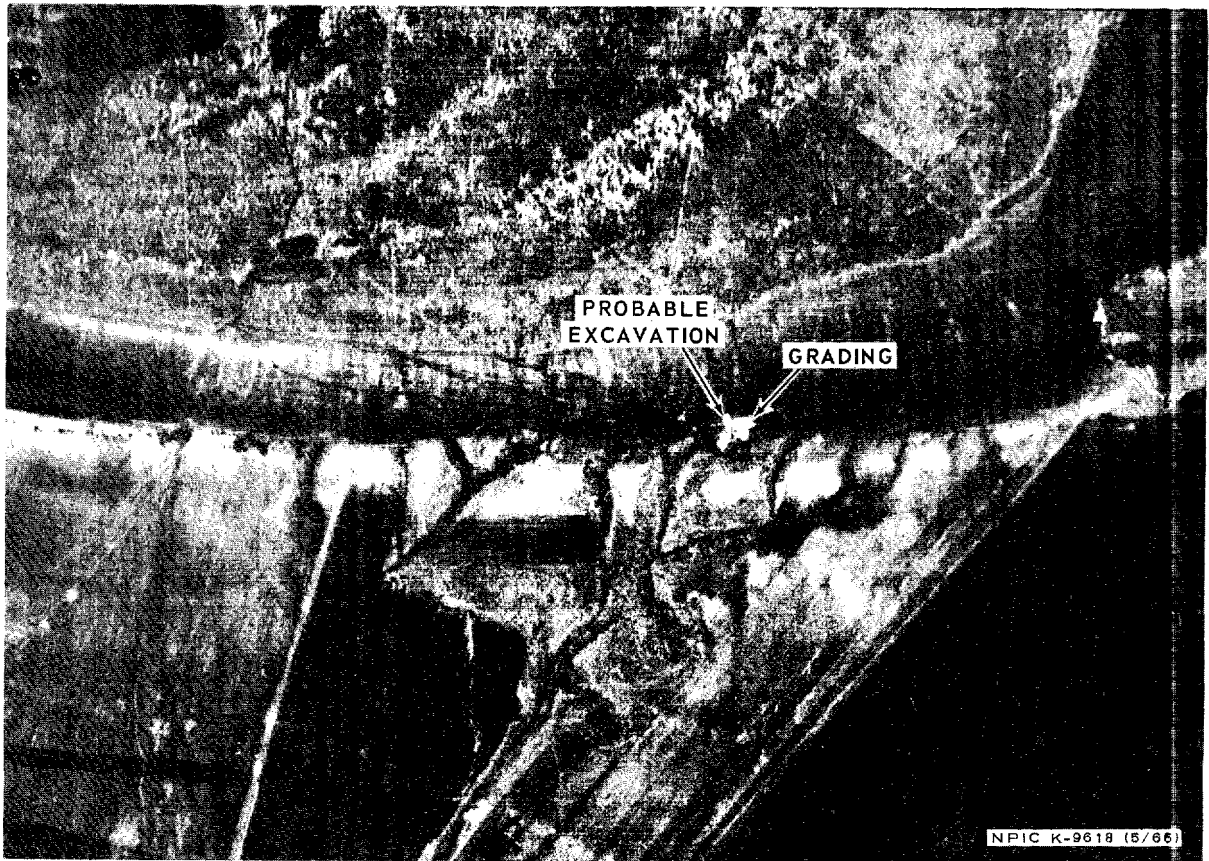
25X1D

Type: IIID

[REDACTED]

Stage of Construction: Early

The probable launch site consists of a probable excavation, grading, and 1 small building. No security fence can be observed.



TOP SECRET RUFF

Handle Via
Talent-KEYHOLE
Control System Only

TOP SECRET

TOP SECRET