

# BRIEF

PHOTOGRAPHIC INTERPRETATION REPORT



## KUYBYSHEV EXPERIMENTAL AIRCRAFT ENGINE PLANT KRASNAYA GLINKA 2, USSR

TCS-80261/66

APRIL 1966

COPY 101

2 PAGES

handle via **TALENT-KEYHOLE** control only

GROUP 1 EXCLUDED FROM  
AUTOMATIC DOWNGRADING  
AND DECLASSIFICATION

**TOP SECRET**

DECLASS REVIEW by NIMA/DOD



WARNING

This document contains information affecting the national security of the United States within the meaning of the espionage laws U. S. Code Title 18, Sections 793 and 794. The law prohibits its transmission or the revelation of its contents in any manner to an unauthorized person, as well as its use in any manner prejudicial to the safety or interest of the United States or for the benefit of any foreign government to the detriment of the United States. It is to be seen only by personnel especially indoctrinated and authorized to receive information in the designated control channels. Its security must be maintained in accordance with regulations pertaining to TALENT-KEYHOLE Control System.

NATIONAL PHOTOGRAPHIC INTERPRETATION CENTER

NAME

Kuybyshev Experimental Aircraft Engine Plant Krasnaya Glinka 2

25X1A

COUNTRY	GEO COORDINATES	WAC	BE NO	NPIC NO	COMOR NO
USSR	53-21N 50-13E	0165	[REDACTED]	[REDACTED]	[REDACTED]

REFERENCES

[REDACTED] (TS RUFF); USATC, Series 200, Sheet  
0165-17HL, 4th ed, Dec 63 (S/No Foreign Dissem [REDACTED])

25X1C

The Kuybyshev Experimental Aircraft Engine Plant Krasnaya Glinka 2, which is located 9 nautical miles north of the city of Kuybyshev along the bank of the Volga River, appears to be nearing the completion of a large expansion program.

Activity at the plant since [REDACTED] has included the construction of an engine test building, a large fabrication building, a second powerplant, a probable engineering building and fuel storage facilities.

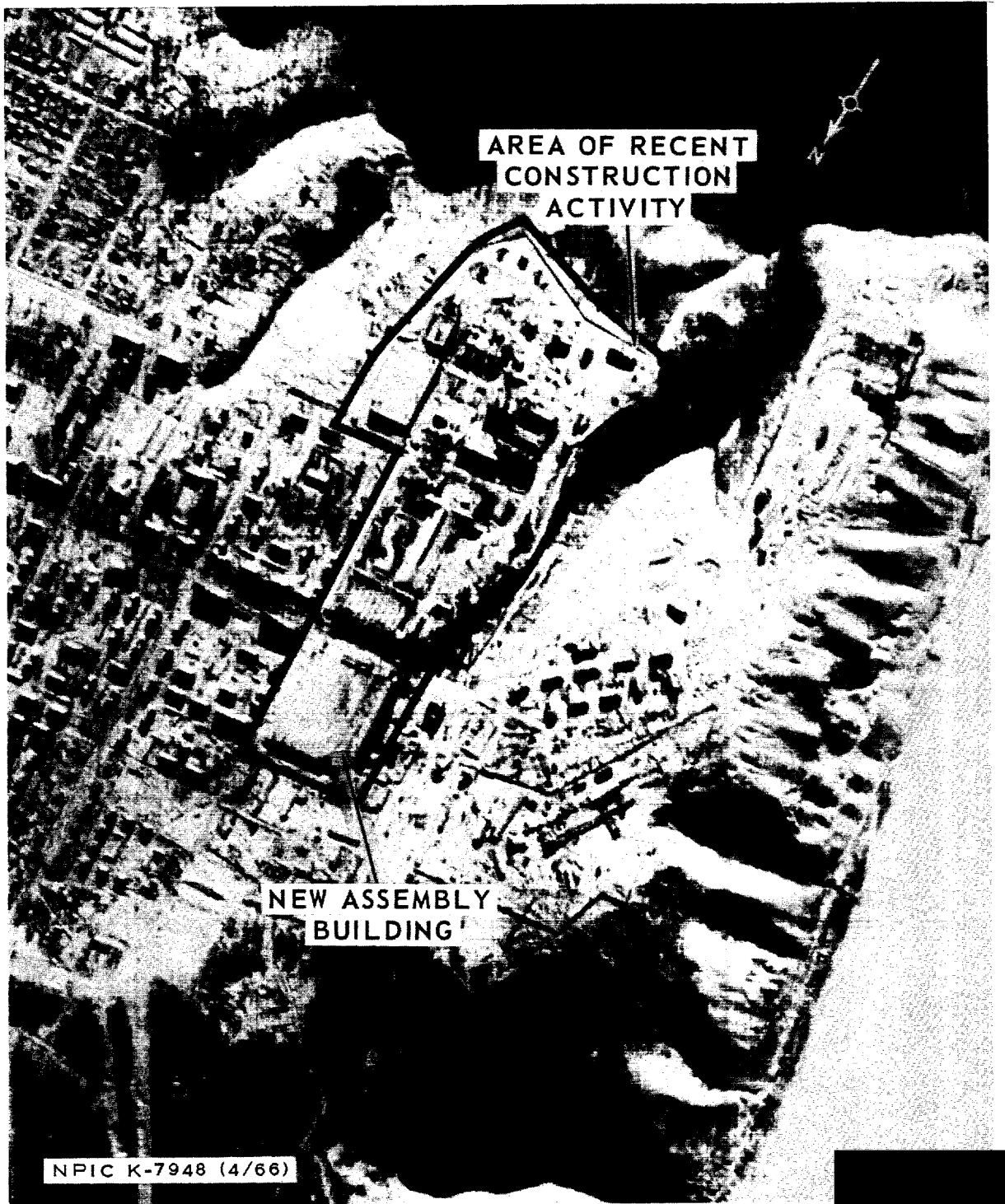
25X1D

The most significant addition has been the recent completion of a large assembly building, immediately north of the plant boundary. This large building, 640 by 545 feet, contains a high-bay section, 550 by 115 feet, and has a height of approximately 70 feet. Footings for this building were first evident in [REDACTED]

The fence line in the southwest corner of the plant has been realigned to enclose new construction in this area. Three small rectangular buildings have been erected and several small unidentified structures are present in this salient.

~~TOP SECRET RUFF~~

105-90201/00



25X1D

~~TOP SECRET RUFF~~

**TOP SECRET**

**TOP SECRET**