

HLU

TOP SECRET Approved For Release 2003/11/21 : CIA-RDP78T04759A003500010002-7

# BRIEF

PHOTOGRAPHIC INTERPRETATION CENTER



## SAM INSTALLATION SERIES

Declass Review by NIMA / DoD

[Redacted]

25X1

FEBRUARY 1966

COPY

1 PAGE

25X1

[Redacted]

AUTOMATIC DOWNGRADING AND DECLASSIFICATION

Approved For Release 2003/11/21 : CIA-RDP78T04759A003500010002-7

TOP SECRET

25X1

Approved For Release 2003/11/21 : CIA-RDP78T04759A003500010002-7

Approved For Release 2003/11/21 : CIA-RDP78T04759A003500010002-7

25X1

Approved For Release 2003/11/21	<b>TOP SECRET</b>	: CIA-RDP78T04759A003500010002-7
---------------------------------	-------------------	----------------------------------

25X1

NATIONAL PHOTOGRAPHIC INTERPRETATION CENTER

INSTALLATION NAME Krivoy Rog SAM Site C07-2 USSR	GEO COORDS 48-07-20N 033-56-42E	PUBLICATION DATE February 1966
	NPIC TARGET NO 0233-72B	BE NO [REDACTED]

25X1D  
25X1A

PHOTOGRAPHY

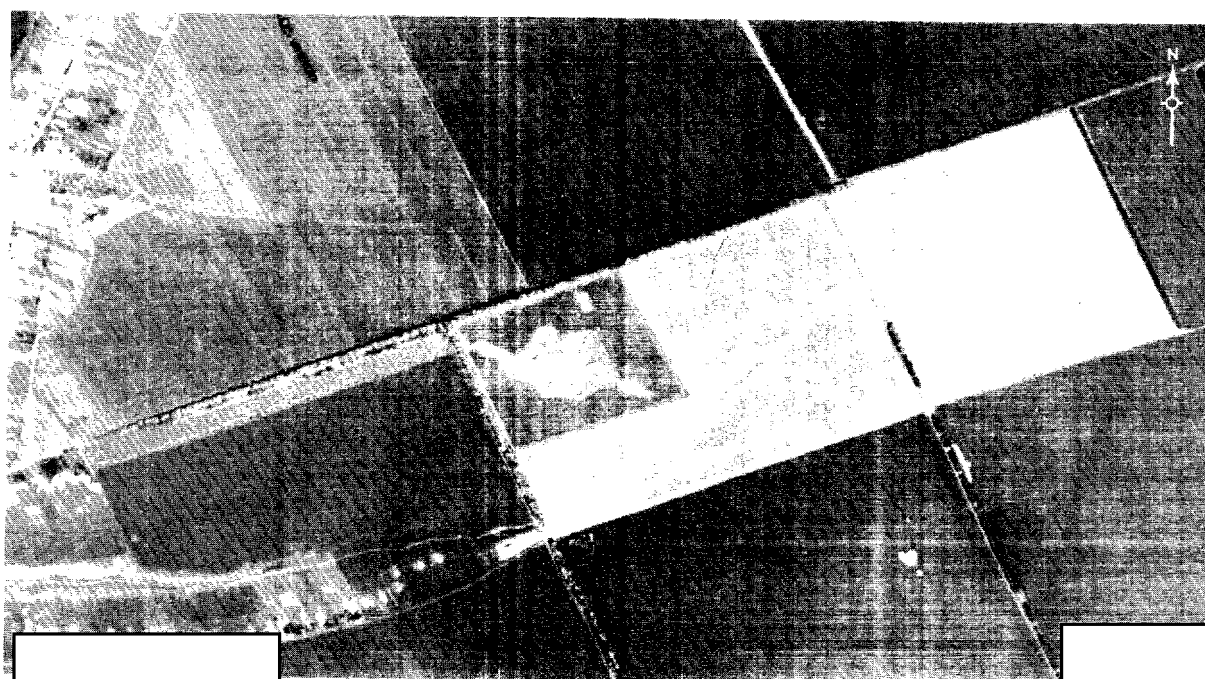
25X1D

FIRST OBSERVED [REDACTED]	AD AREA WP-1-3	NPIC PROJECT 11005/66
------------------------------	-------------------	--------------------------

25X1

REFERENCES  
USATC, Series 200, Sheet 0233-25HL, 3d ed, Aug 62 (S); NPIC/R-926/64 (TS REQUIREMENT USIB-64)

Location: 20 nm NE of Krivoy Rog  
 Configuration: Undetermined, lacks road pattern  
 Status: Complete  
 Launch Facilities: 6 positions, all revetted and occupied  
 Electronic Facilities: Central guidance area is revetted, and probably unoccupied  
 Site Support Facilities: 2 possible buildings 400 ft NE of launch area; 2 missile-hold positions, revetted, and occupancy undetermined  
 Security Measures: Launch area is probably fenced



25X1D

25X1

Approved For Release 2003/11/21	<b>TOP SECRET</b>	: CIA-RDP78T04759A003500010002-7
---------------------------------	-------------------	----------------------------------

25X1

Approved For Release 2003/11/21 : CIA-RDP78T04759A003500010002-7

**TOP SECRET**

Approved For Release 2003/11/21 : CIA-RDP78T04759A003500010002-7

**TOP SECRET**