

TOP SECRET

Approved For Release 2001/09/01 : CIA-RDP78T04759A002100010022-0

PHOTOGRAPHIC INTERPRETATION REPORT



**PROBABLE MISSILE
PRODUCTION FACILITIES
PEIPING AIRFRAME PLANT
CHINA**

TCS-81455/65
NOVEMBER 1965
COPY 181
2 PAGES

handle via **TALENT-KEYHOLE** control only

DECLASS REVIEW by NIMA/DOD

GROUP 1 EXCLUDED FROM
AUTOMATIC DOWNGRADING
AND DECLASSIFICATION

Approved For Release 2001/09/01 : CIA-RDP78T04759A002100010022-0

TOP SECRET



WARNING

This document contains information affecting the national security of the United States within the meaning of the espionage laws U. S. Code Title 18, Sections 793 and 794. The law prohibits its transmission or the revelation of its contents in any manner to an unauthorized person, as well as its use in any manner prejudicial to the safety or interest of the United States or for the benefit of any foreign government to the detriment of the United States. It is to be seen only by personnel especially indoctrinated and authorized to receive information in the designated control channels. Its security must be maintained in accordance with regulations pertaining to TALENT-KEYHOLE Control System.

Handle Via
Talent-KEYHOLE
Control System Only

~~TOP SECRET RUFF~~

Approved For Release 2001/09/07 : CIA-RDP81-01759A002100010022-0

TCS-81455/65
November 1965

NATIONAL PHOTOGRAPHIC INTERPRETATION CENTER

NAME

Probable Missile Production Facilities, Peiping Airframe Plant

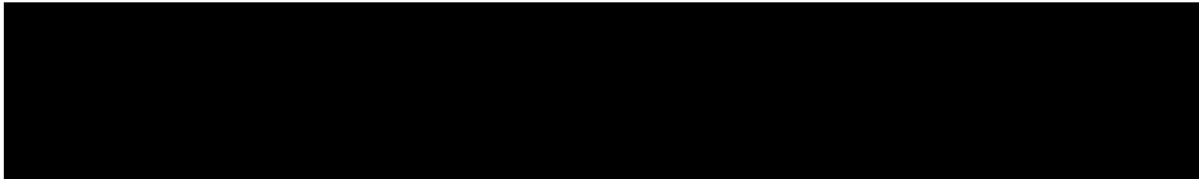
COUNTRY GEO COORDINATES

China 39-48N 116-25E



25X1A

REFERENCES



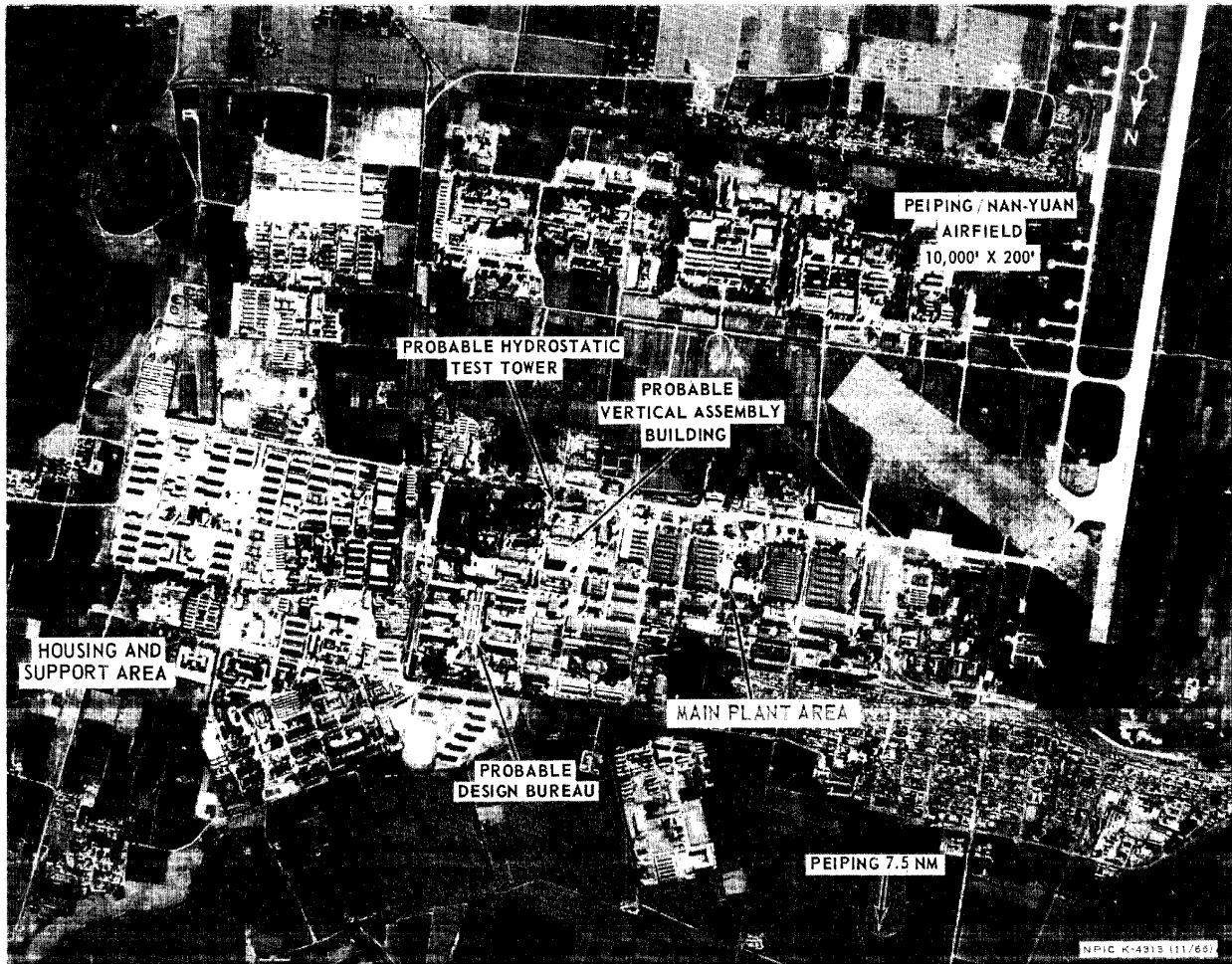
25X1D

A recent study of facilities at the Peiping Airframe Plant reveals 2 structures which could associate this plant with missile production in Communist China.

The 2 structures are identified as a probable vertical assembly building and a probable hydrostatic test tower. They are situated in close proximity to each other in the eastern section of the plant. The probable vertical assembly building measures 220 by 180 feet, with a high bay section measuring 195 by 110 feet and approximately 75 feet high. The probable hydrostatic test tower has a peaked roof measuring 40 by 40 feet and approximately 75 feet high. Neither of these structures was present on photography in [redacted] both appeared to be in late stages of construction.

25X1D

The present floorspace of the plant is approximately 2.3 million square feet, most of which is contained in assembly buildings, machine shops, workshops, foundries, and a probable design bureau.



Handle Via
Talent KEYHOLE
Control System Only

TOP SECRET RUFF

PCS-31455/65

TOP SECRET RUFF

Handle Via
Talent KEYHOLE
Control System Only

TOP SECRET

Approved For Release 2001/09/01 : CIA-RDP78T04759A002100010022-0

Approved For Release 2001/09/01 : CIA-RDP78T04759A002100010022-0

TOP SECRET