

23-09-65

REF ID: A6640038-3

TOP SECRET



NPIC REPORT

[Redacted]

IM
AN
DI

P.I. NOTES

VITAL RECORDS COPY

23 SEPTEMBER 1965

Declass Review by NIMA / DoD

DDG	REV DATE	BY
DDIG COMP	OPI	TYPE
DDIG CLASS	PAGES	REV CLASS
JUST	NEXT REV	AUTH: HR 10-2

TOP SECRET

25X1

Approved For Release 2005/07/12 : CIA-RDP78T04759A000500010036-3

Approved For Release 2005/07/12 : CIA-RDP78T04759A000500010036-3

25X1



Approved For Release 2005/07/12 : CIA-RDP78T04759A000500010036-3
TOP SECRET
CIA INTERNAL USE ONLY

25X1




25X1

CIA IMAGERY ANALYSIS DIVISION

PI NOTES, A PUBLICATION OF CIA/IMAGERY ANALYSIS DIVISION, HIGHLIGHTS SIGNIFICANT INTELLIGENCE ITEMS DERIVED FROM PHOTOGRAPHY, AS WELL AS CURRENT DEVELOPMENTS IN THE "PI" FIELD.

P.I. NOTES 10/66

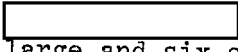
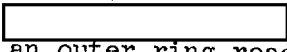
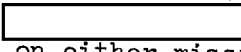

IAD DEVELOPMENTS

The Imagery Analysis Division of CIA is now producing Photo Intelligence Briefs (PIB). These one page photo intelligence reports will be used to disseminate items of interest to the intelligence community quickly. During the past week 31 PIB's have been produced on bomb damage assessment of bridges in North Vietnam. 

25X1

On 16 September a Development and Evaluation Board (IAD/DEB) was established within the Imagery Analysis Division to provide a focal point within each operating component for the review and evaluation of equipment, material, or techniques for possible IAD application, and further to bring coherent branch participation into the research and development efforts of the IAD. An early task for this group will be the application of a systems analysis approach to the operations of the IAD, with a goal of automating PI operations as far as possible, to achieve quicker response time, lower costs, and greater operating efficiency.

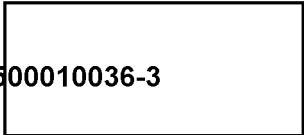
CUBA

A probable SAM site under construction has been identified at 22-28N 80-18W, UTM coordinates 17QNQ707848 (AMS 4183 III), 3.6 nautical miles (nm) north-northwest of Santa Isabel De Las Lajas, Las Villas Province, Cuba. Photography of  revealed a new road leading to a probable support area containing 11 large and six small buildings, all under construction. Photography of  revealed an access road leading to a central guidance area, an outer ring road and four inner service roads under construction. The buildings under construction in the support area on  have now been completed. No missile related equipment was observed on either mission. 

25X1B

25X1D

25X1



25X1

25X1




Fig. 1

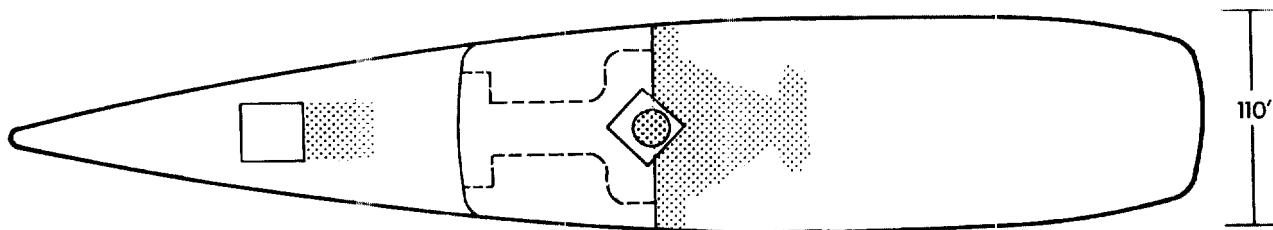
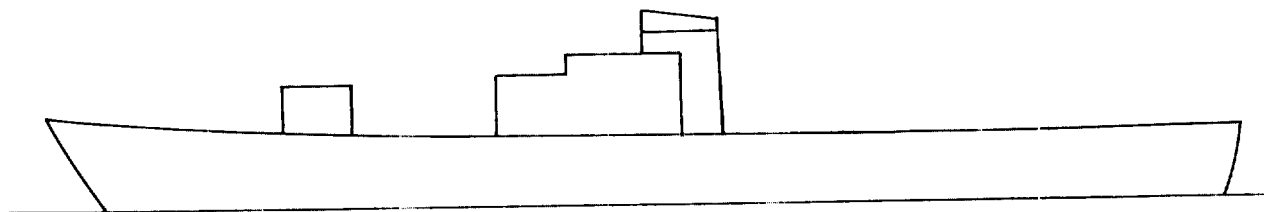
**NEW CLASS NAVAL VESSEL
NOSENKO SHIPYARD 444
NIKOLAYEV, USSR**

NOTES:

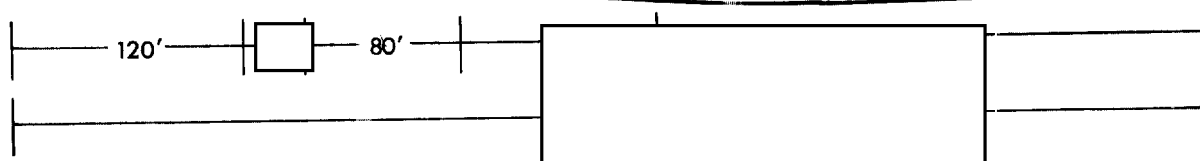
- 1. Side view is artist's conception
- 2. Accuracy is ± 10 feet or 10 %, whichever is greater

 Shadow

 Marginal Imagery



25X1D



25X1D

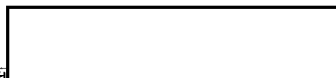


25X1D



25X1

TOP SECRET



CIA INTERNAL USE ONLY

25X1

Approved For Release 2005/07/12 : CIA-RDP78T04759A000500010036-3
TOP SECRET
CIA INT

25X1

CIA IMAGERY ANALYSIS DIVISION

USSR

25X1

A continuing analysis of [redacted] Mission [redacted] reveals that the large new ship outfitting at Nosenko Shipyard 444, Nikolayev, USSR (46-57N 031-59E) is a new class of naval vessel. Revised approximate dimensions of this ship are as follows: length overall (LOA), [redacted] feet; maximum beam, 110 feet; bow to main superstructure, [redacted] feet; length of main superstructure, [redacted] feet; after edge of main superstructure to stern, [redacted] feet. Figure 1 is a provisional line drawing of this ship.

25X1D

25X1D
25X1D
25X1D

The ship was first observed in an early stage of construction on the easternmost building way of the yard in [redacted]. It was launched between [redacted]. A second ship with the same hull configuration and dimensions is presently under construction on the same building way. The second ship was first observed under construction in early [redacted].

25X1D

25X1D

25X1D

The hull shape (plan view) of these two ships is very similar to the US NORTH CAROLINA Class battleship. Of naval vessels currently in commission these two ships most closely resemble the French JEANNE D'ARC (ex-LA RESOLUE), which is classed as a cruiser helicopter carrier.

All measurements have been made by the NPIC Technical Intelligence Division, and are considered to be accurate within plus or minus 10 feet or 10 per cent, whichever is greater. [redacted]

25X1

25X1

A continuing analysis of [redacted] Mission [redacted] of the Gorkiy Shipyard 112, Gorkiy, USSR (56-22N 043-53E), has revealed a large unoccupied transporter dock beside one of the fitting-out piers. The length overall (LOA) of this dock measured approximately 425 feet. No class of submarine larger than the "J" Class SSG (LOA approximately 280 feet) has ever been reported at this yard. Vessels in the water include one possible submarine (LOA approximately 290 feet) and a smaller unoccupied transporter dock (LOA approximately 315 feet).

25X1D

25X1D
25X1D

Significant expansion of the Gorkiy Shipyard facilities has been noted with the recent construction of a large new probable construction hall. This new building measures approximately 540 feet by 290 feet and is located on the northwest side of the transverser across from the large (710 by 530 feet) main construction hall. Two small structures were noted on the western edge of this site in [redacted] and side walls for this new building were visible in [redacted]. Monitor configuration indicates that the new probable construction hall has two bays of equal size facing the transverser. The new building appears to be significantly higher than the main construction hall.

25X1D

25X1

25X1

[Redacted]

TOP SECRET

Approved For Release 2005/07/12 : CIA-RDP78T04759A000500010036-3

CIA INTERNAL USE ONLY

[Redacted]

25X1

25X1

CIA IMAGERY ANALYSIS DIVISION

All measurements have been made by the CIA/IAD project analyst. They should not be construed as being mensuration data compiled by the NPIC Technical Intelligence Division.

[Redacted]

25X1

25X1

[Redacted] photography of [Redacted] provided partial coverage of the Amu-Bukhara Canal that connects the Amu-Darya River with the Zaravshan River. The portion of the canal covered is the western section from the Amu-Darya River near Chardzhou to a point approximately 40 nautical miles to the east. This section of the canal is full of water and partially verifies the article in the recent issue of "Soviet Union" (No. 186, 1965), which indicated the canal was in operation. The most recent coverage of the eastern end of the canal near the Kuya-Mazarskoye Reservoir was on [Redacted], and at that time no water was in that section of the canal. [Redacted] (Reference: PI Notes, 9 September 1965, [Redacted])

25X1D

25X1D

25X1

25X1

25X1

CHINA

A detailed study of Mission [Redacted] reveals a total of 48 AAA sites in the immediate vicinity of Nan-ning South Airfield (22-36N 108-10E), China. The 48 AAA sites consist primarily of 4-, 6-, and 8-gun medium AAA sites with a medium degree of occupancy.

25X1D

25X1C

25X1D

The total of 48 sites reflects an increase of approximately 50 percent over the number observed previously on Blue Springs Mission [Redacted].

25X1C

25X1D

The continuing search for uranium mining and milling facilities in China has revealed on photography from Mission [Redacted] a possible uranium mine and mill 9 nautical miles west-northwest of Shang-Jao, China, at 28-28N 117-47E. The mill is secured and is located adjacent to the mining area. The mine and mill appear to be active. Further study of these facilities is being conducted.

25X1D

25X1C

25X1C

25X1

TOP SECRET

Approved For Release 2005/07/12 : CIA-RDP78T04759A000500010036-3

CIA INTERNAL USE ONLY

[Redacted]

25X1

25X1

25X1

TOP SECRET

Approved For Release 2005/07/12 : CIA-RDP78T04759A000500010036-3

ALEM AREA ROAD BASED AIRFIELD, SWEDEN

56 - 58N 10 - 24E

Fig. 2

by-pass road

reference point

possible parking area

probable alert parking areas

Alem

25X1D

possible maintenance/parking area
8 kilometers

20X enlargement

Approved For Release 2005/07/12 : CIA-RDP78T04759A000500010036-3

TOP SECRET

CIA INTERNAL USE ONLY

25X1

Approved For Release 2003/07/12

TOP SECRET

CIA-RDP78T04759A000500010036-3

25X1
25X1

CIA INTERNAL USE ONLY

CIA IMAGERY ANALYSIS DIVISION

SWEDEN

25X1D

[] Mission [] covered the southeast quarter of Sweden with good quality, generally clear photography on which approximately 40 Swedish airfields were observed.

Analysis by IAD reveals that from satellite photography it is possible to detect a number of Sweden's unique "road bases" which have been developed as a means of reducing the vulnerability of the country's aircraft to enemy attack.

25X1B

From satellite photography it will be possible to do a study of Sweden's well-developed airbase network with emphasis on the location and description of road bases []

One of the Swedish road bases observed on [] Mission [] is located at 56-58N 16 24E (Figure 2) on the main road from Vastervik (57-45N 16-37E) to Kalimar (56-39N 16-20E). It consists of a north-northeast/south-southwest strip of the road approximately 6,050 feet long; the strip has been widened to approximately 80 feet to form a runway, probably surfaced with macadam. Loop turnarounds with probable alert parking areas are located at each end of the runway, and a possible aircraft parking area is located at the edge of the woods on the west-northwest side of the runway. A possible aircraft maintenance/parking area is located along both sides of the road 8 km south of the airfield. A by-pass road circumvents the airfield to the west-northwest. AOB consists of four possible aircraft. 25X1D

25X1

In the near future a more detailed study will be published by IAD on Sweden's approach to dispersing its aircraft by the use of road bases. []

- - - -

25X1
25X1

Approved For Release 2005/07/19 : CIA-RDP78T04759A000500010036-3

TOP SECRET
CIA INTERNAL USE ONLY

Approved For Release 2005/07/19 : CIA-RDP78T04759A000500010036-3

TOP SECRET
CIA INTERNAL USE ONLY