

No. Pages: 1

~~TOP SECRET~~

COPY NO.: 113

PHOTOGRAPHIC INTELLIGENCE MEMORANDUM

RAILROAD STATION, YARDS, AND SHOPS  
ABAKAN, USSR



DOCUMENT NO. 3  
 NO CHANGE IN CLASS.   
 DECLASSIFIED  
CLASS. CHANGED TO: IS 3  
NEXT REVIEW DATE: \_\_\_\_\_  
AUTH: HR 70-2  
DATE: 3/06/02 REVIEWER: 5296

HTA-M3-58

10 FEBRUARY 1958

WARNING: HANDLE VIA TALENT CONTROL CHANNELS ONLY

CENTRAL INTELLIGENCE AGENCY  
OFFICE OF RESEARCH AND REPORTS

This document contains information usable only within the TALENT CONTROL SYSTEM. It is to be seen on a MUST-KNOW BASIS ONLY BY PERSONNEL ESPECIALLY INDOCTRINATED AND AUTHORIZED. Reproduction is prohibited unless approved by the originator.

Declass Review by  
NIMA/DOD

~~TOP SECRET~~

T  
A  
L  
E  
N  
T

**WARNING**

This material contains information affecting the National Defense of the United States within the meaning of the espionage laws, Title 18, USC, Secs. 793 and 794, the transmission or revelation of which in any manner to an unauthorized person is prohibited by law.

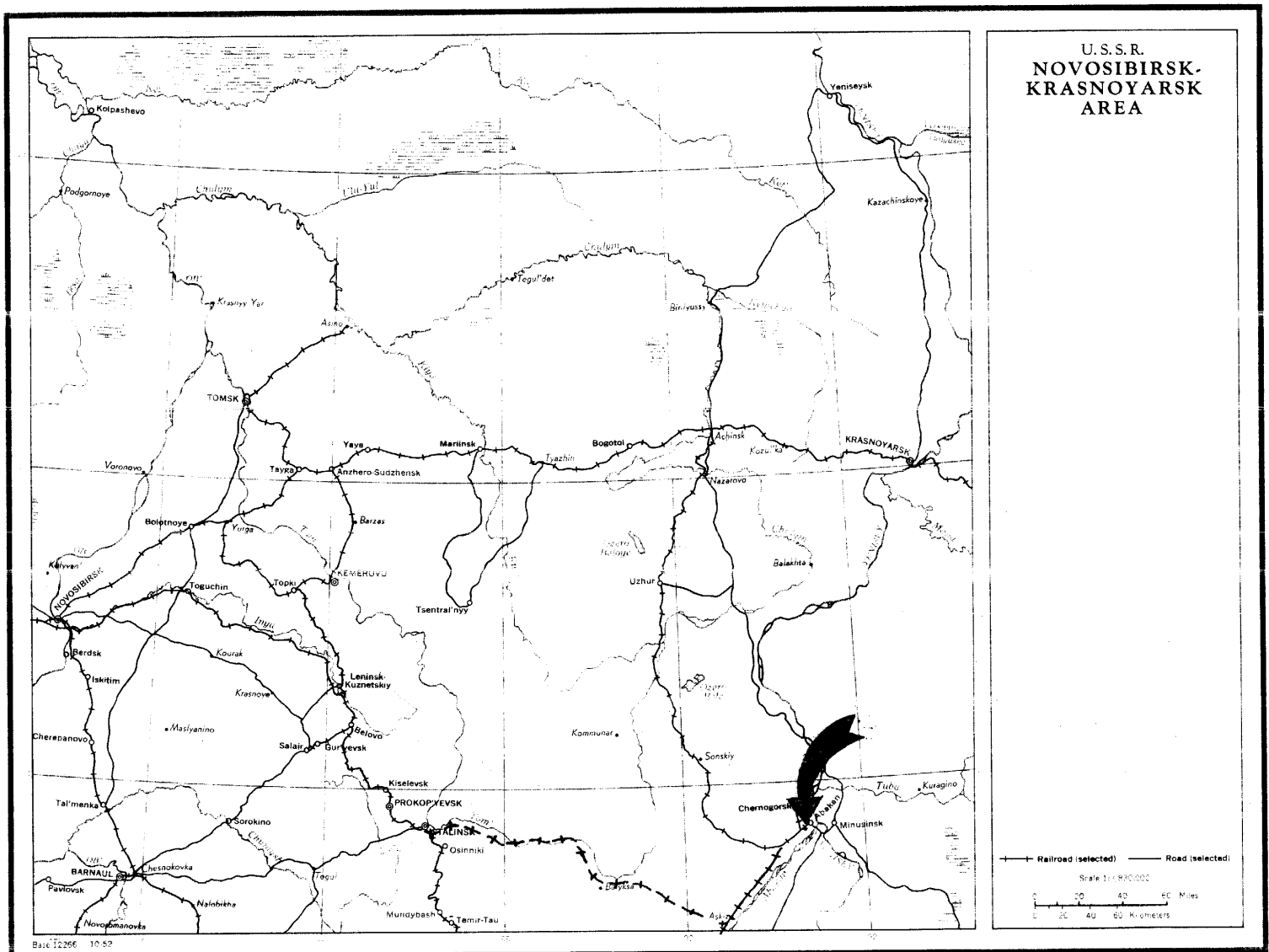
RAILROAD STATION, YARDS, AND SHOPS

ABAKAN, USSR

HTA/M-3/58  
10 February 1958

TOP SECRET CHESS

TOP SECRET CHESS



HTA/M-3/58

RAILROAD STATION, YARDS, AND SHOPS

ABAKAN, USSR

Abakan is located on the Yenisey River, 175 miles east of Stalinsk and 170 miles south-southwest of Krasnoyarsk. The single-track South Siberian Railroad from Abakan to Askiz joins the single-track Achinsk to Orositelnyy rail line at a point 19 miles southwest of Abakan.

The Abakan Railroad Station, Yards, and Shops include a 10 track-wide classification yard 5500 feet long, three small holding yards, an eight-track locomotive repair yard, a four-track POL unloading yard, a locomotive repair shop, and a passenger station. Approximately 90 freight and passenger cars of various types were present in these yards at the time of photography. Data on these cars are presented in Table 1.

Major components of the Abakan Railroad Station, Yards, and Shops are annotated on the following photograph and described in the accompanying key.

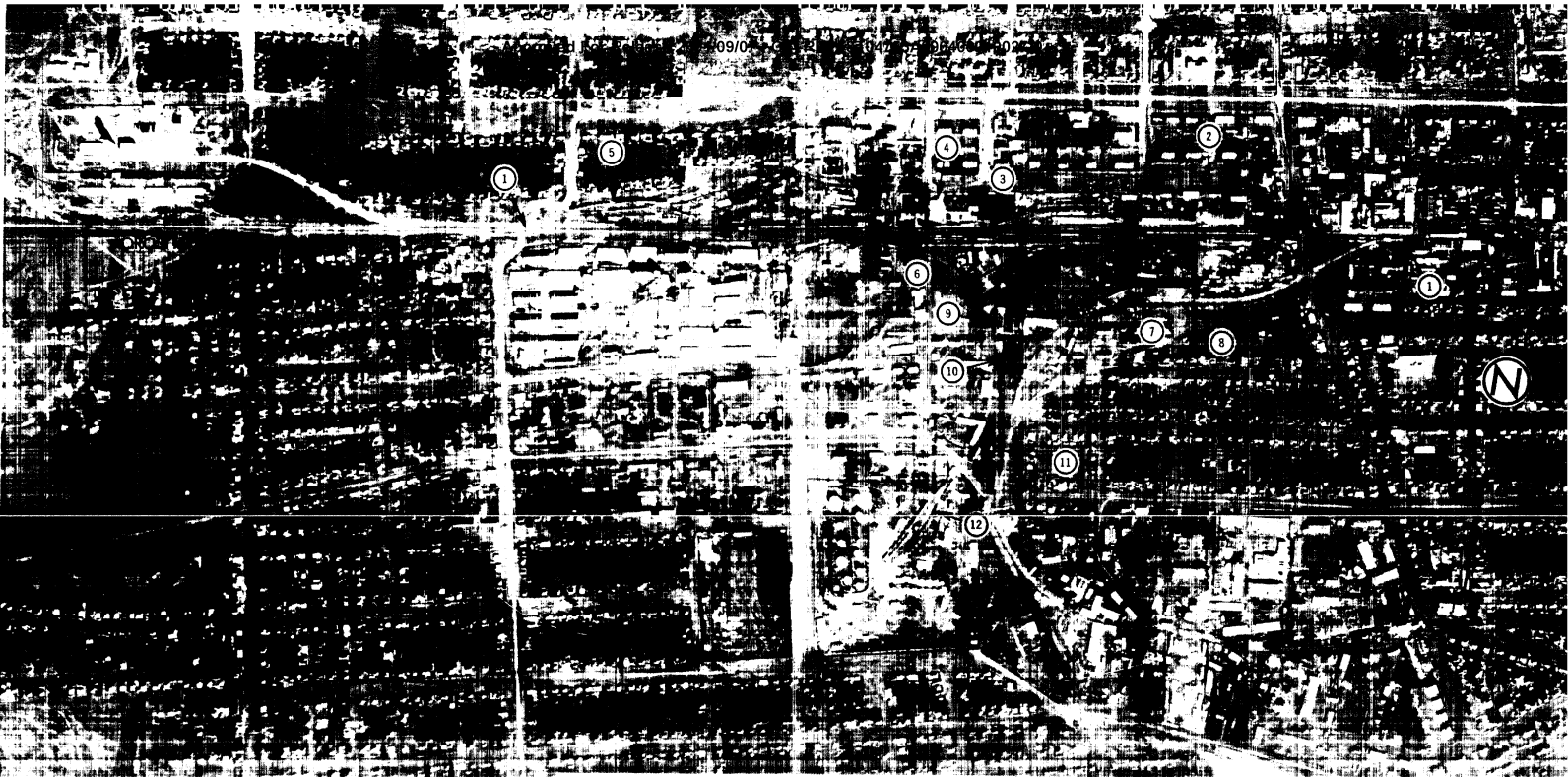
TOP SECRET CHESS

HTA/M-3/58

### KEY TO ANNOTATIONS

1. Choke points. Total length of installation, 5,500'.
2. Storage area, 1500' x 195', fenced. Nine storage buildings:  
350' x 40', 340' x 40', 230' x 65', 105' x 65', 90' x 40', 90'  
x 35', 75' x 25', 60' x 40', 50' x 35'.  
Water tower, 25' diameter.
3. Classification yard. 10 tracks wide; over-all length 5,500',  
average length 3,100'.
4. Passenger station, 130' x 40'.  
Two storage buildings: 180' x 40' and 75' x 25'.
5. Holding yard. 4 tracks wide; 1100' long.
6. Holding yard. 9 tracks wide; 850' long; dead-end.
7. Holding yard, for locomotives. 2 tracks wide; 900' long; dead-end.
8. Two-track section of wye-turnaround, 1600' long.
9. Locomotive repair facilities.  
Locomotive repair shop: 150' x 115' (6 tracks enter building)  
Workshop buildings: 190' x 50' and 80' x 35'
10. Locomotive repair yard. 8 tracks wide; 630' long.
11. Wye-turnaround, effective length approximately 340'.
12. POL unloading yard. 4 tracks wide; 750' long. Contains two  
probable unloading racks.

TOP SECRET CHESS



ABAKAN RAILROAD STATION YARDS AND SHOPS

10 11 12

53° 45' N 81° 30' E

DATE OF PHOTO: NAHRY

Released For Release 2001/09/07 : CIA-RDP78T04753A000400010027-0

0 500 1000 2000 3000

FEET

HTA/M-3/58

25X1D

TABLE 1. Description of Lines of Cars (10 or more) Present in  
 Abakan Railroad Yards [REDACTED]

<u>Cars in Line (number)</u>	<u>Length of Line (feet)</u>	<u>4-Axle Cars (no. and type)</u>	<u>2-Axle Cars (no. and type)</u>
24	1100	13 Box 8 Tank	3 Box
10	435	2 Box 1 Hopper 2 Passenger	1 Box 4 Tank
15	1050	15 Passenger	None
15	600	6 Box 2 Hopper 3 Flat	1 Box 3 Tank
12	470	12 Tank	None
14	390	2 Box 5 Tank	7 Box
<hr/> 90		<hr/> 71	<hr/> 19



HTA/M-3/58

REQUIREMENT: Prepared in answer to RR/HTA/E/R71/57 re-  
questing a description of the rail facilities at Abakan, USSR.

25X1D



REFERENCE:

ATMP: 0161-9991-100, 2nd Ed. (Prov), Aug 1955

COORDINATES: 53°45'N-91°30'E

B.E. NUMBER: None

~~TOP SECRET~~

**T  
A  
L  
L  
E  
N  
T**

~~TOP SECRET~~