

~~TOP SECRET~~

COPY NO.: 29

PHOTOGRAPHIC INTELLIGENCE MEMORANDUM

ZINC AND LEAD PLANT
UST KAMENOGORSK, USSR



**CONTAINS SENSITIVE
COMPARTMENTED INFORMATION**
A-M57-57

DOCUMENT NO. 21
NO CHANGE IN CLASS.
 DECLASSIFIED
CLASS. CHANGED TO: TS 9/12
NEXT REVIEW DATE: _____
AUTH: HR 70-2
DATE: 9/12/72 REVIEWER: 6274

31 DECEMBER 1957

WARNING: HANDLE VIA TALENT CONTROL CHANNELS ONLY

CENTRAL INTELLIGENCE AGENCY
OFFICE OF RESEARCH AND REPORTS

This document contains information usable only within the TALENT CONTROL SYSTEM. It is to be seen on a MUST-KNOW BASIS ONLY BY PERSONNEL ESPECIALLY INDOCTRINATED AND AUTHORIZED. Reproduction is prohibited unless approved by the originator.

Declass Review by
NIMA/DOD

~~TOP SECRET~~

TALENT

ALL INFORMATION CONTAINED HEREIN IS UNCLASSIFIED

DATE 11-13-2001 BY SP-6 BTJ/STW

EXCEPT WHERE SHOWN OTHERWISE, THIS DOCUMENT IS UNCLASSIFIED

WARNING

This material contains information affecting the National Defense of the United States within the meaning of the espionage laws, Title 18, USC, Secs. 793 and 794, the transmission or revelation of which in any manner to an unauthorized person is prohibited by law.

CONFIDENTIAL

TOP SECRET

EXCEPT WHERE SHOWN OTHERWISE, THIS DOCUMENT IS UNCLASSIFIED

~~TOP SECRET CHESS~~

Approved For Release 2001/09/07 : CIA-RDP78T04753A000400010021-6

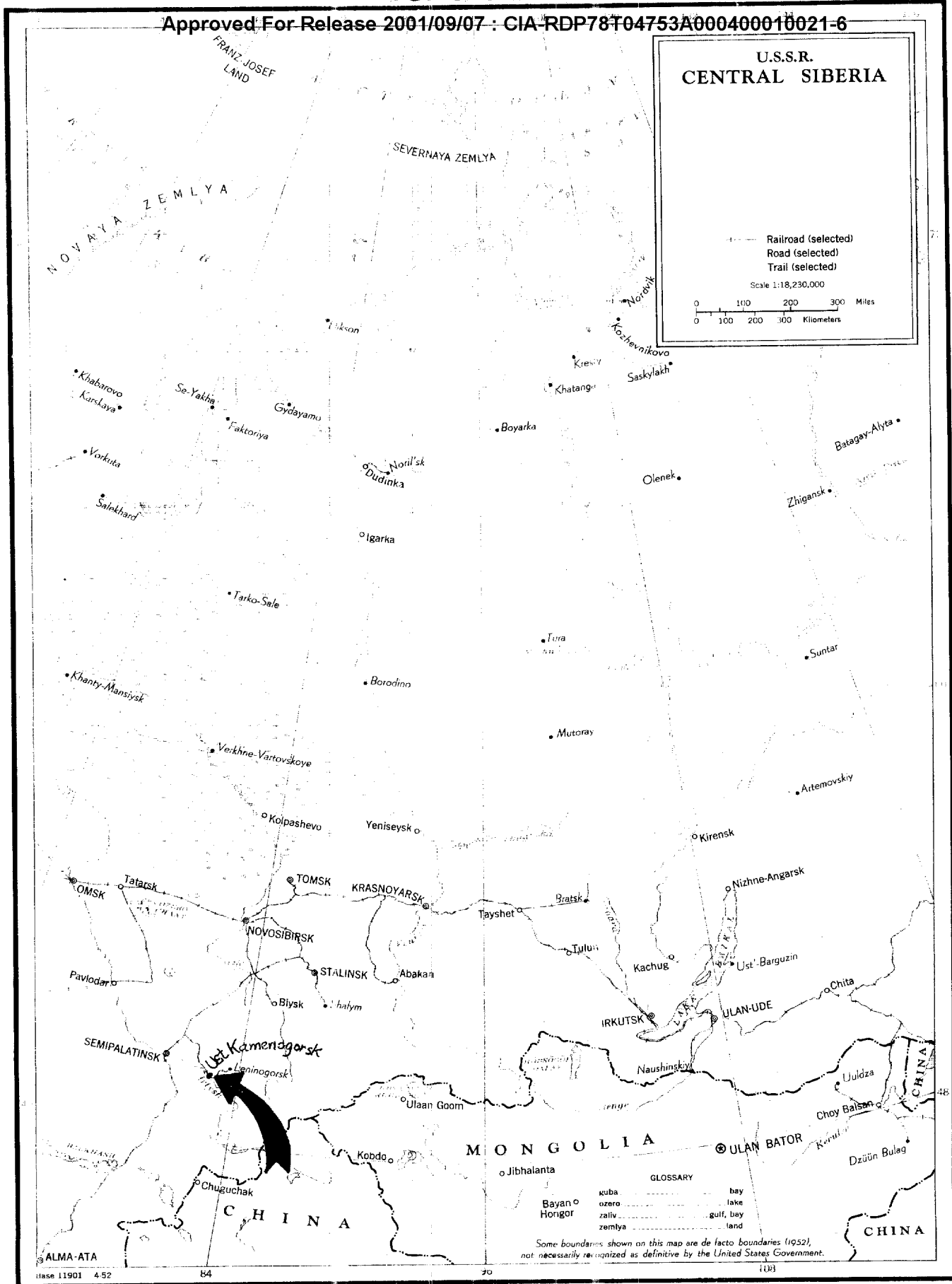
ZINC AND LEAD PLANT
UST KAMENOGORSK, USSR

HTA/M-57/57

31 December 1957

~~TOP SECRET CHESS~~

Approved For Release 2001/09/07 : CIA-RDP78T04753A000400010021-6



ALMA-ATA 11901 4-52

84

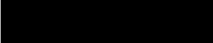
70

(U)

ZINC AND LEAD PLANT
UST KAMENOGORSK, USSR

The Ust Kamenogorsk Zinc and Lead Plant, situated on the north-east edge of the city, is one of the largest and most important zinc and lead plants in the USSR.

This new plant, constructed since World War II, is associated with the Leninogorsk Lead Plant, 60 rail miles to the northeast (see HTA/M-51/57), and the Glubokoye Copper and Lead Works, 20 rail miles to the northwest (see HTA/B-94/57).

25X1D  photography of this plant is not suitable for a complete photographic analysis. Clouds and cloud shadows completely obscure some portions of the plant and render interpretation difficult in others.

The major visible components of the Zinc and Lead Plant are described on the following page and annotated on the accompanying photograph.

KEY TO ANNOTATIONS

1. Roasting building for zinc ores, irregularly shaped, 70,600 sq. ft. roof area.
2. Leaching building for roasted zinc ores, 450' x 125'.
3. Zinc electrolysis building, irregularly shaped, 62,850 sq. ft. roof area.
4. Thermal-electric power plant.
5. Probable lead ore roasting building, 300' x 210'.
6. Sintering building for lead ore, 240' x 90'.
7. Coal storage for thermal-electric power plant.
8. Lead blast furnace building, 350' long.
9. Baghouse, 400' x 160', serving lead blast furnaces.
10. Probable lead dressing building, 310' x 120'.
11. Five storage buildings, each 425' x 50'.
12. Cottrell treater, 350' x 180', connected by flues to sintering and blast furnace buildings.
13. Storage-type building, 470' x 210'.
14. Unidentified unit. Building, 190' x 120', connected by overhead pipe to gasometer 70' in diameter.
15. Ore preparation building, 500' x 100'.
16. Probable electrolysis building, 240' x 180'.

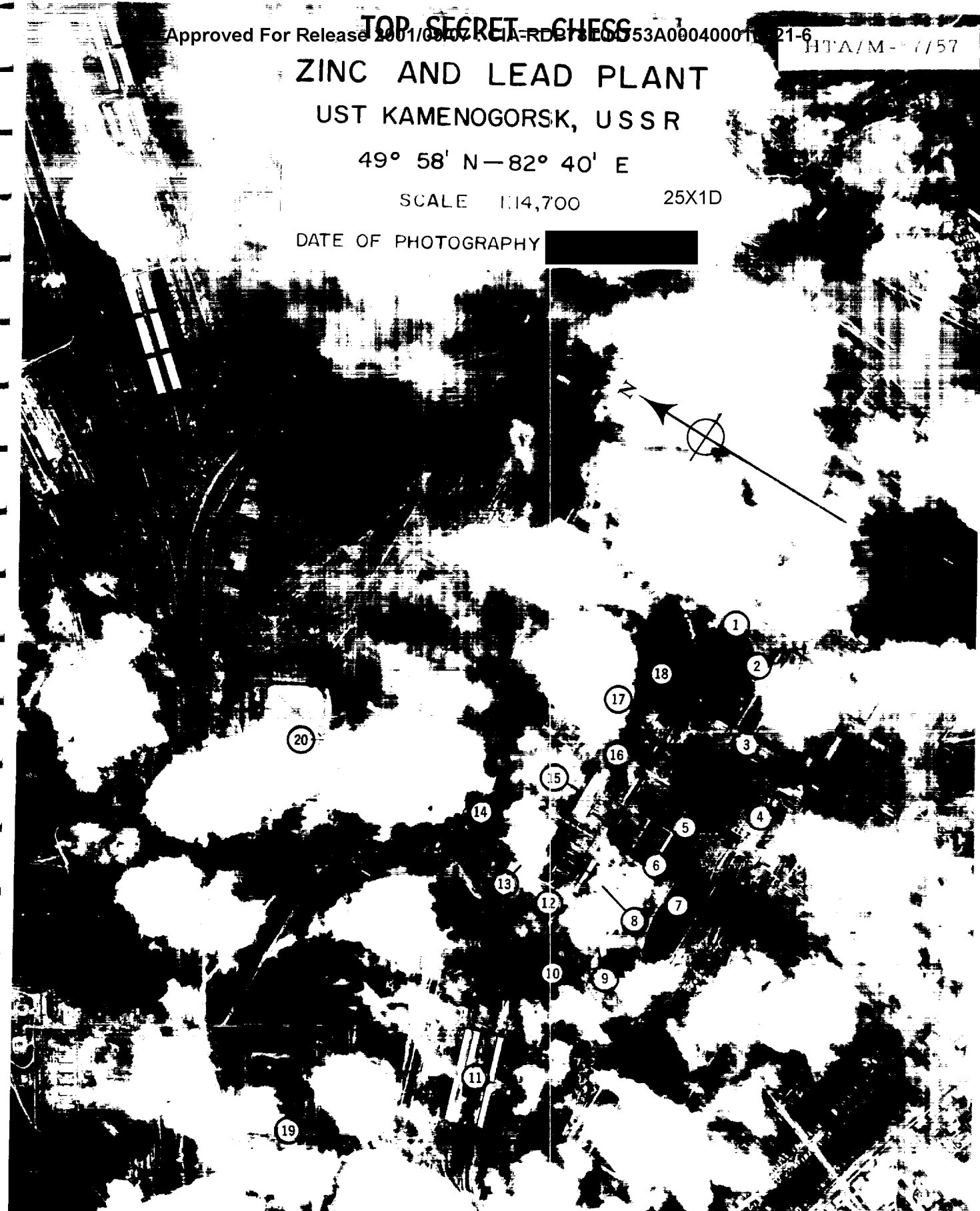
HTA/M-77/57

ZINC AND LEAD PLANT UST KAMENOGORSK, USSR

49° 58' N—82° 40' E

SCALE 1:14,700 25X1D

DATE OF PHOTOGRAPHY [REDACTED]



TOP SECRET - GCHS

KEY TO ANNOTATIONS (continued)

17. Probable roasting building, irregularly shaped, 50,200 sq. ft. roof area.
18. Probable leaching building, T-shaped, 250' x 160' and 320' x 160'.
19. Waste liquid disposal area. Two earth-revetted ponds, each with an area of approximately 490,000 sq. ft. Waste material possibly is dewatered and removed for reprocessing.
20. Waste liquid disposal area. Two earth-revetted disposal ponds, each with an area of approximately 290,000 sq. ft.

NOTE: Installations 16, 17, and 18 probably comprise either a new unit for processing of zinc ore or an auxiliary unit for processing by-products, derived from the zinc ore.

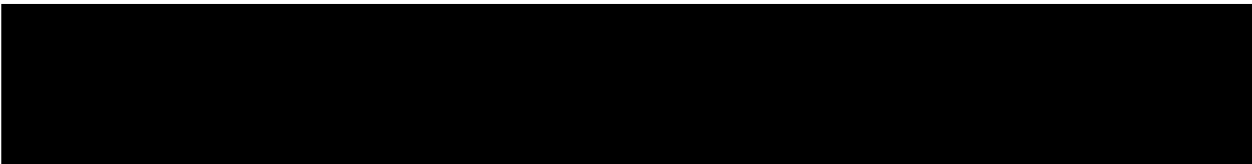
TOP SECRET CHESS

Approved For Release 2001/09/07 : CIA-RDP78T04753A000400010021-6
HTA/M-57/57

REQUIREMENT: Prepared in answer to RR/HTA/E/R43/57, requesting
description and layout of the Ust Kamenogorsk Zinc and Lead
Plant.

25X1D

PHOTO DATA:



REFERENCES:

ATMP: 0239-9974-1-25A (Prov), 1st Ed., Jan 1956
0239-9974-100A, 1st Ed., Jan 1956

25X1C



COORDINATES: 49°58'N
82°40'E

25X1A

B.E. NUMBER: 

TOP SECRET

Approved For Release 2001/09/07 : CIA-RDP78T04753A000400010021-6

**T
A
L
L
E
N
T**

TOP SECRET

Approved For Release 2001/09/07 : CIA-RDP78T04753A000400010021-6