

No. Pages : 8

TOP SECRET

COPY NO.: 51

Photographic Intelligence Report

AIRCRAFT ENGINE PLANT 154

VORONEZH, USSR

VITAL RECORDS COPY



PIC/R-10/60

SEPTEMBER 1960

WARNING: HANDLE VIA TALENT CONTROL CHANNELS ONLY

**CENTRAL INTELLIGENCE AGENCY
PHOTOGRAPHIC INTELLIGENCE CENTER**

This document contains information usable only within the TALENT CONTROL SYSTEM. It is to be seen on a MUST-KNOW BASIS ONLY BY PERSONNEL ESPECIALLY INDOCTRINATED AND AUTHORIZED. Reproduction is prohibited unless approved by the originator.

Declass Review by NIMA / DoD

TOP SECRET

**T
A
L
E
N
T**

WARNING

This material contains information affecting the National Defense of the United States within the meaning of the espionage laws, Title 18, USC, Secs. 793 and 794, the transmission or revelation of which in any manner to an unauthorized person is prohibited by law.

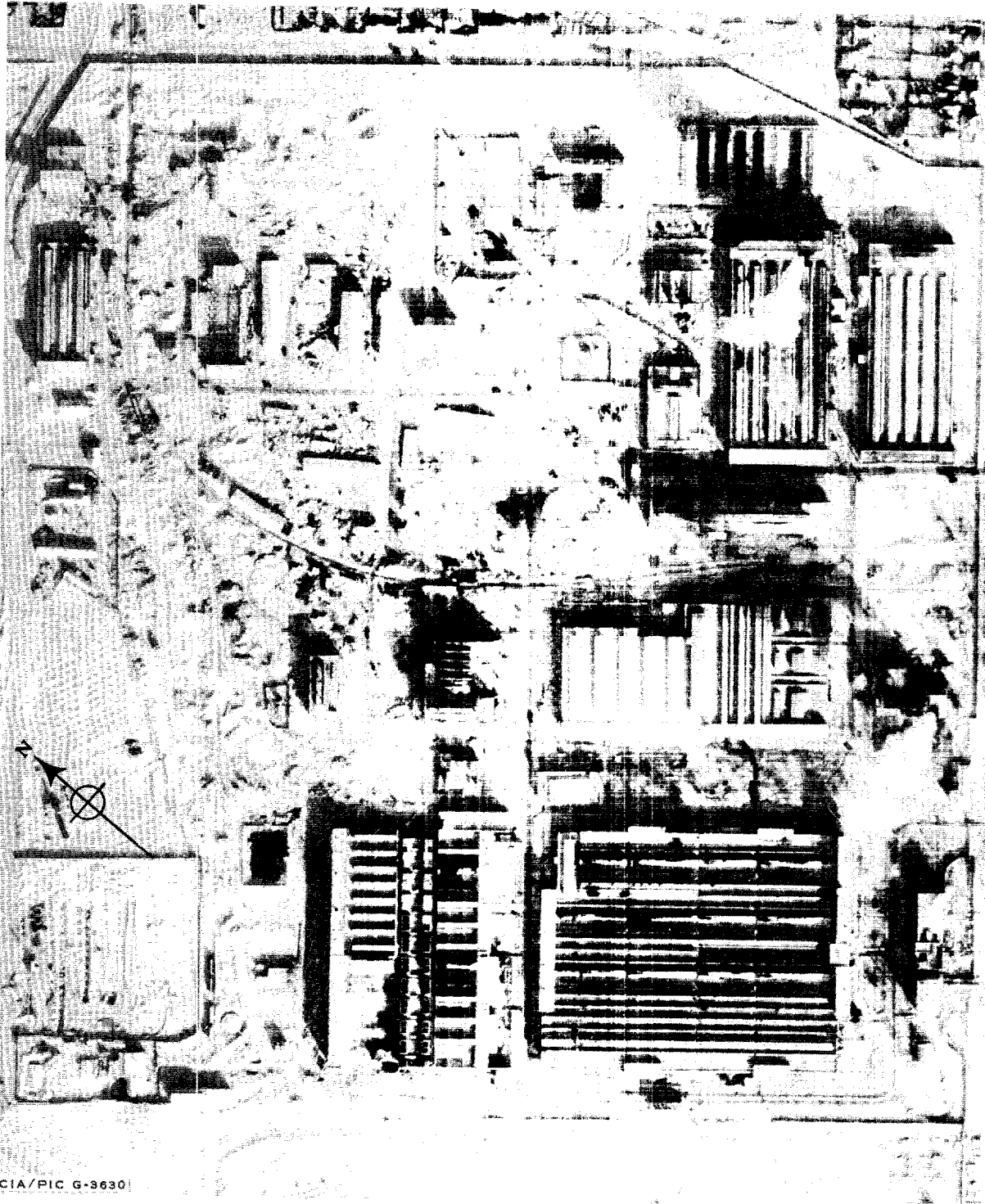
AIRCRAFT ENGINE PLANT 154

VORONEZH, USSR

PIC/R-10/60

SEPTEMBER 1960

PIC/R-10/60



CIA/PIC G-3630

FIGURE 1. AIRCRAFT ENGINE PLANT 154, VORONEZH. (Date of Photography [REDACTED])

25X1D

PIC/R-10/60

AIRCRAFT ENGINE PLANT 154
VORONEZH, USSR

25X1D
25X1C
25X1D
Aircraft Engine Plant 154 is located on the west central edge of Voronezh. This plant produces about 5.1 percent of the reciprocating engine capacity of the USSR. 1/ Photography of [REDACTED] shows that new construction since [REDACTED] aerial coverage totals approximately 361,000 square feet (Figure 1). The overall plant area has also been increased to about twice its former size, to approximately 137 acres. Total roof cover for the plant measures 1,474,915 square feet, with a usable floor space of [REDACTED]

25X1D
Engine test facilities are housed in the assembly and engine test building (item 27 on Figure 2) and consist of 22 U-type engine test cells. Six of these engine test cells measure [REDACTED] while the remaining 16 are 20 feet square (see Figure 3). No typical rocket motor test buildings are identified at this plant.

The entire plant area is secured by a combination wall and open type fence, with several secured areas within the installation (see Figure 2). The plant is well served by internal roads and a single rail spur, branching into three parts within the area.

Major components for the plant are shown on Figure 2 and are keyed to the accompanying table.

PIC/R-10/60

TABLE 1. MAJOR COMPONENTS OF VORONEZH AIRCRAFT ENGINE PLANT 154

Item	Description
1	Workshop
2	Gravel and sand processing bldg; and excavation
3	U/I Bldg
4	Admin bldg
5	Probable greenhouses
6	Forge
7	Forge
8	Machine shop
9	Machine shop
10	Admin bldg
11	Possible vegetable storage, partly underground
12	Seven storage bldgs
25X1D	
13	U/I bldg u/c
14	Workshop
15	Storage area fenced; two storage bldgs
16	Annealing and chem treatment bldg
17	Boilerhouse
18	Machine shop
19	Foundry
20	Prob standby diesel power plant
21	Greenhouse and nursery area
22	U/I Heat-Processing bldg
23	Workshop
24	Main Gatehouse
25	Admin bldg
26	Assembly bldg
27	Assembly bldg with 22 U-type engine test cells
28	Cooling pond
29	Secured area, With u/i bldg
30	Secured area, With poss cooling tower
31	Secured area, With foundation for new bldg
32	Secured area, With u/i bldg and revetted bldg
33	Workshop

*Heights vary throughout building.

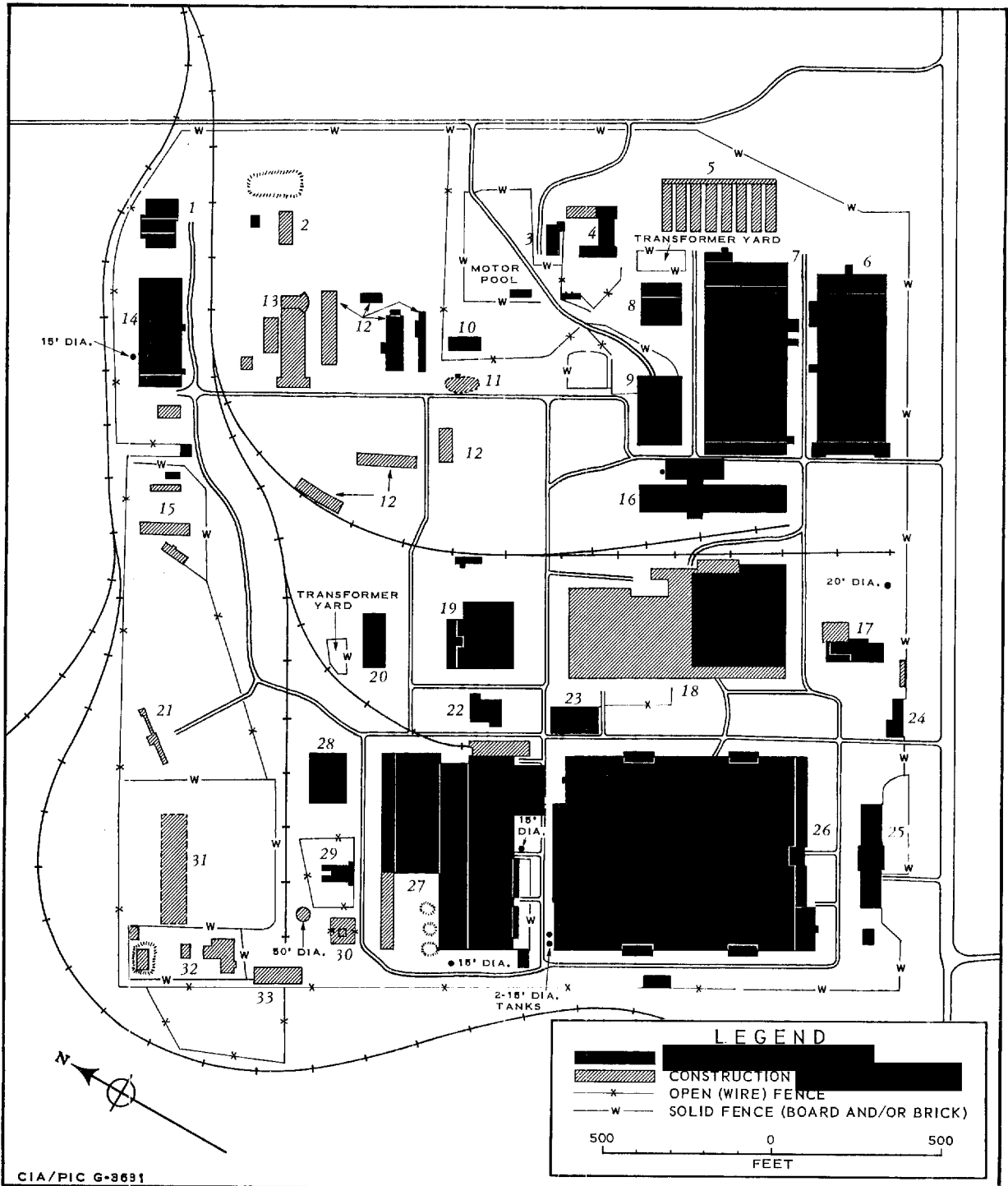


FIGURE 2. AIRCRAFT ENGINE PLANT 154, VORONEZH. Drawing shows the major features of the plant data on which are given in Table 1.

PIC/R-10/60

25X1D

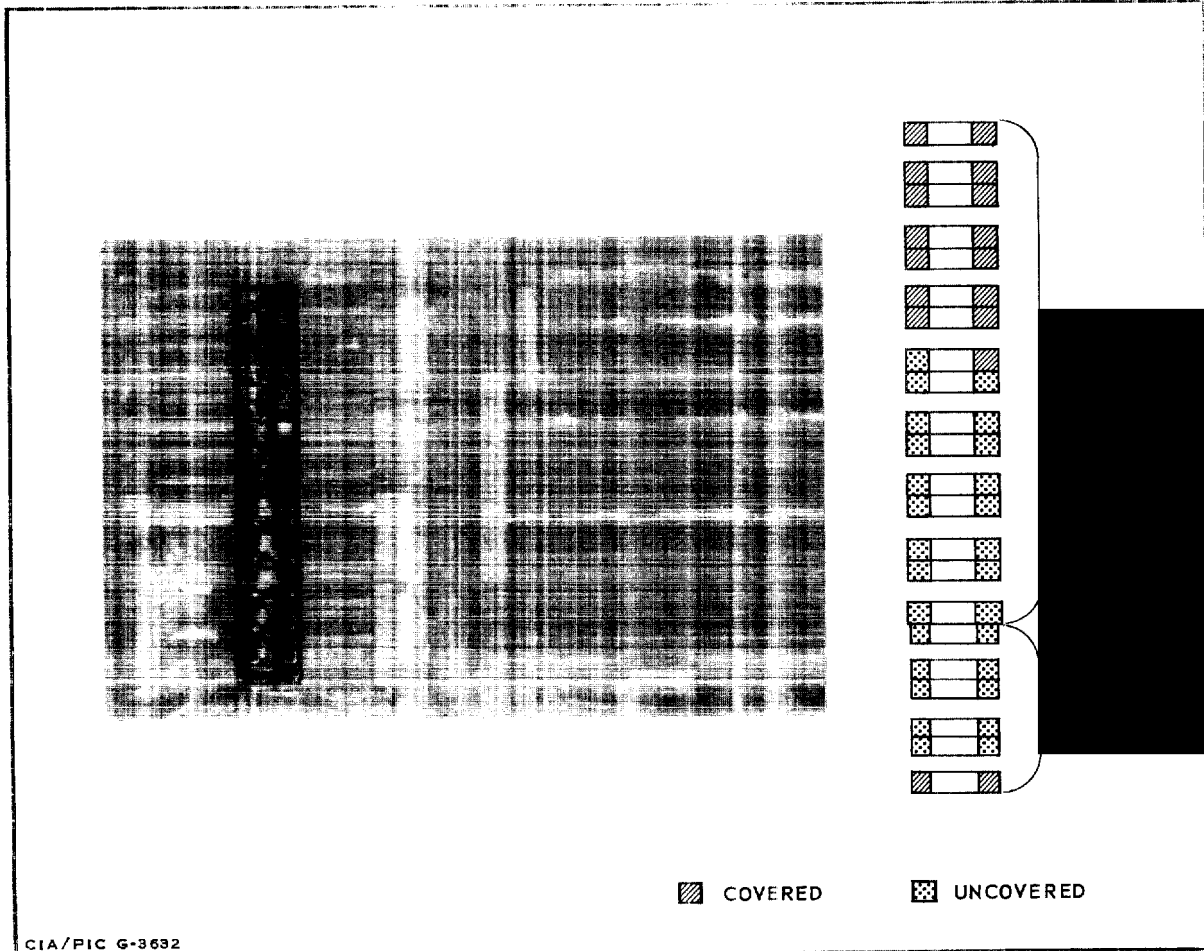
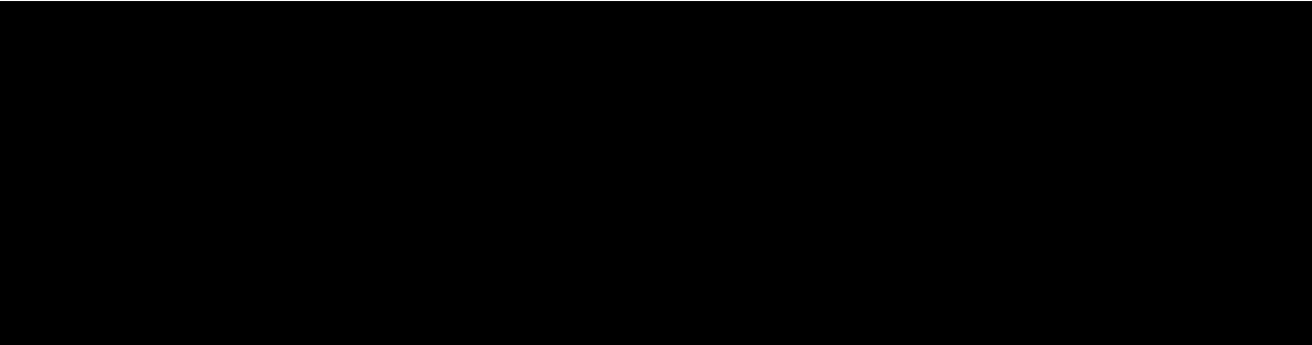


FIGURE 3. ENGINE TEST CELLS AT AIRCRAFT PLANT 154.

PIC/R-10/60



25X1D
MAPS OR CHARTS

- 25X1A ACIC. Air Target Mosaic Series 25 Sheet [REDACTED] 3d ed,
Dec 57 (C)
- 25X1A ACIC. Air Target Mosaic Series 10 Sheet [REDACTED] 1st ed,
Dec 50 (S)

25X1A DOCUMENTS

1. ACIC. US Target Information Sheet [REDACTED] 3d ed, Jun 57 (S)

OTHER REFERENCE

AIR. DPIR T60-23, Voronezh Aircraft Engine Plant 154. Jun 60 (TSC)

COORDINATES

51°39'N - 39°10'E

REQUIREMENT

CIA/RR/E/21/60 requesting an analysis of the Voronezh Aircraft Engine Plant 154, with a line drawing and measurements of major components and measurements and a description of the engine test cells.

TOP SECRET

Approved For Release 2001/09/01 : CIA-RDP78T04751A000700010030-5

T
A
L
L
E
N
T

TOP SECRET

Approved For Release 2001/09/01 : CIA-RDP78T04751A000700010030-5