

**TOP SECRET**

25)

No. Pages 12  
Copy No. 45

**Joint Photographic Intelligence Report**

**M-TYPE STORAGE SITES  
AT SOVIET AIRFIELDS**



**ARMY**



**NAVY**



**CIA**

Declass Review by NIMA / DoD

**PIC/JR-5/60  
MARCH 1960**



**PUBLISHED AND DISSEMINATED BY  
CENTRAL INTELLIGENCE AGENCY  
PHOTOGRAPHIC INTELLIGENCE CENTER**

This document contains information usable only within the [redacted] SYSTEMS. It is to be seen on a MUST-KNOW BASIS ONLY BY PERSONNEL ESPECIALLY INDOCTRINATED AND AUTHORIZED. Reproduction is prohibited unless approved by the originator.

25)

**TOP SECRET**

**W A R N I N G**

This material contains information affecting the National Defense of the United States within the meaning of the espionage laws, Title 18, USC, Secs. 793 and 794, the transmission or revelation of which in any manner to an unauthorized person is prohibited by law.

~~TOP SECRET~~

M-TYPE STORAGE SITES  
AT SOVIET AIRFIELDS

PIC/JR-5/60  
MARCH 1960

~~TOP SECRET~~

~~TOP SECRET~~

PIC/JR-5/60

## PREFACE

This joint photographic intelligence report has been prepared by the Army, Navy, and Central Intelligence Agency in partial response to CIA requirement SI/R-12/59. It is based solely on photographic evidence and is concerned only with the so-called M-type (miscellaneous) storage sites at Soviet airfields which have been the object of considerable interest in the intelligence community for several years. It is the purpose of this report to examine the M-type sites collectively and to determine if they have any characteristics in common with known nuclear weapons storage sites at Soviet airfields.

~~TOP SECRET~~

TOP SECRET

25X1

25X1

PIC/JR -5/60

### SUMMARY

Twenty-three so-called M-type storage sites have been located on

[redacted] photography between [redacted]

25X1

They are associated with both tactical and long range airfields in various parts of the Soviet Union. None of the distinguishing features of known

[redacted]

25X1

### INTRODUCTION

The M-type storage sites associated with Soviet airfields include sites for which no specific storage function has been identified. They have certain general characteristics which include (1) a double-fenced area located from one to three nautical miles from a military airfield; (2) non-revetted storage buildings on paved service ramps; (3) a simple road network serving buildings within the site; and (4) post World War II construction.

Other than these general characteristics, the M-type sites differ considerably in general appearance, size, shape, and layout. Road connections with airfields are sometimes new and direct, and in other cases where existing roads have been utilized, they are indirect. All sites are road served, and a few are rail served. All sites, with one exception, appear to be enclosed by a double wire fence separated by a wide cleared area.

Despite the diversity of these sites, for purposes of discussion in this report they have been divided into four groups, three of which are based on certain similarities, primarily in size and shape, while the fourth group includes six distinctly dissimilar sites.

TOP SECRET

25X1

TOP SECRET

PIC/JR-5/60 25X1

ANALYSIS OF SITES

The six M-type sites shown in Table 1 are covered on vertical and oblique photography ranging in quality from very good to poor. These sites are almost square in shape. Figure 1 is a photograph of the Monchegorsk site.

25X1

TABLE 1. First Group of M-type Storage Sites

Location	Coordinates of Site	Distance from A/F (nm)	Transportation Facilities	Percent Complete
Afrikanda	67° 26' N 32° 48' E	2	Road	Possibly 100
Gdov	58° 50' N 27° 57' E	2	Road	Probably 100
Monchegorsk	67° 59' N 33° 04' E	1	Road	Probably 100
Osinovka	44° 01' N 132° 11' E	1.6	Road	100
Postavy	55° 08' N 26° 46' E	1	Road	50
Shchuchin	53° 35' N 24° 48' E	1.5	Road	Probably 100

The service road within the site is laid out in a nearly-square pattern with an average of nine non-revetted gable-roofed buildings situated on

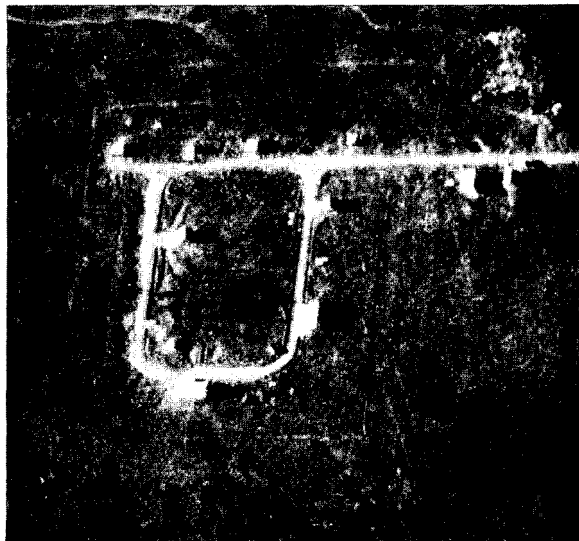


FIGURE 1. M-TYPE STORAGE SITE NEAR MONCHEGORSK AIRFIELD.

paved ramps and well spaced. Two or three of the buildings at each site are large storage buildings while the remainder are quite small. Visible only at the Osinovka and Postavy sites is a very small structure, possibly earth-covered, which could be for storage of primers and fuzes. Although the storage sites in this group have certain similarities, no one site appears identical to another.

Excellent to poor quality photography, both vertical and oblique,

TOP SECRET

25X1

TOP SECRET

25X1

PIC/JR-5/60

covers the eight M-type sites in the second group (Table 2). They are rectangular in shape. The service road within the site forms a long rectangle with an average of nine non-revetted gable-roofed buildings, well-spaced on separate paved ramps. Most of the sites in this group have three large storage buildings and one large support building near the entrance with the remainder of the buildings being smaller storage buildings.

TABLE 2. Second Group of M-type Storage Sites

Location	Coordinates of Site	Distance from A/F (nm)	Transportation Facilities	Percent Complete
Briyeni	45° 58' N 29° 21' E	1.5	Road & Rail	100
Chernyakhovsk	54° 34' N 21° 48' E	1	Road	Probably 100
Dombarovskiy	50° 47' N 59° 31' E	2	Road	Probably 100
Kupino	54° 22' N 77° 22' E	1.5	Road	100
Limanskoye	46° 43' N 30° 02' E	2	Road & Rail	100
Orsk	51° 17' N 58° 37' E	1	Road	100
Siauliai *	55° 54' N 23° 27' E	2	Road	90
Sol'tsy **	58° 10' N 30° 17' E	2	Road	80

25X1

\* Type II site also present at this airfield.

\*\*Type I site also present at this airfield.

The Briyeni and Limanskoye sites, (see Figure 2 for photograph of Limanskoye site), which appear to be almost identical, are the only ones in this group that have a rail spur entering the site. The site at Sol'tsy appears to be about the same design but has no rail spur. The other sites in this group have the same general features with certain minor variations in layout or number of buildings.

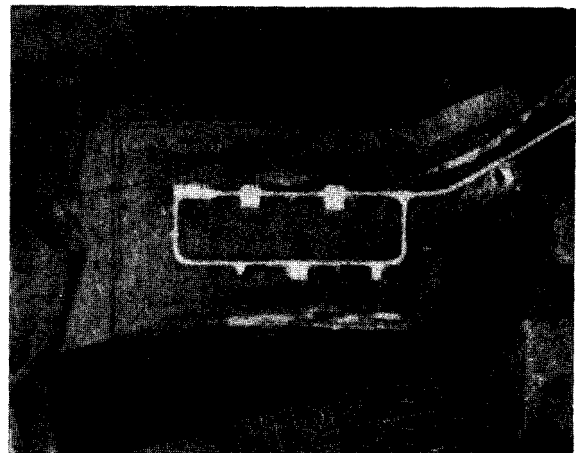


FIGURE 2. M-TYPE STORAGE SITE NEAR LIMANSKOYE AIRFIELD.

Good quality photography covers the M-type sites in the third group (Table 3). There is no stan-

25X1

TOP SECRET

TOP SECRET

25X1

PIC/JR-5/60

standard size or shape to these facilities, but they are generally larger than those in the first two groups. Figure 3 is a photograph of the Voroshilov/Vozdvizhenka site. The Spassk-Dalniy site is the only M-type site where only a single security fence exists.

25X1

TABLE 3. Third Group of M-type Storage Sites

Location	Coordinates of Site	Distance from A/F (nm)	Transportation Facilities	Percent Complete
Khorol East	44° 28' N 132° 05' E	2.5	Road & Rail	100
Spassk-Dalniy East	44° 35' N 132° 56' E	2.4	Road & Rail	Probably 100
Voroshilov/Vozdvizhenka	42° 53' N 131° 58' E	2	Road	Probably 100



FIGURE 3. M-TYPE STORAGE SITE NEAR VOROSHILOV/VOZDVIZHENKA AIRFIELD.

TOP SECRET

25X1



TOP SECRET

25X

PIC/JR-5/60

The Voroshilov/Vozdvizhenka and Khorol East sites each have 17 non-revetted predominately large gable-roofed buildings. The Spassk-Dalniy East site has only seven.

The key feature which makes a group out of these storage sites is the presence of several circular structures. They are placed along the road network on small curved aprons. There are two each at Khorol East and Spassk-Dalniy East, and four at Voroshilov/Vozdvizhenka. They are probably circular tanks covered with earth, for liquid storage of some type. No entrances are visible. These circular structures could be present but not discernible at some of the other M-type sites.

The remaining six storage sites (Table 4) have the same general characteristics as the other M-type storage sites, but each one is unique in layout of buildings and roads. They appear on good quality photography except in the case of the Kedainiai site which is on far oblique photography.

TABLE 4. Fourth Group of M-type Sites

Location	Coordinates of Site	Distance from A/F	Transportation Facilities	Percent Complete
Baranovichi *	53° 04' N 26° 03' E	2	Road	100
Engel's *	51° 29' N 46° 15' E	3	Road & Rail	100
Kedainiai	55° 22' N 23° 57' E	3	Road	Unknown
Krechevitsy	58° 36' N 31° 22' E	2.5	Road	70
Melitopol	46° 53' N 35° 19' E	2	Road	100
Zaporozh'ye East	47° 52' N 35° 18' E	1	Road	100

\* Type II site also present.

Buildings vary in number, size, and shape. At the Engel's site there are also several very small structures possibly for storage of fuzes and primers. In addition, at Engel's there is extensive open storage, possibly of conventional bombs.

TOP SECRET

25X

25X1

Approved For Release 2003/02/27 : CIA-RDP78T04751A000400010029-0

Next 2 Page(s) In Document Exempt

Approved For Release 2003/02/27 : CIA-RDP78T04751A000400010029-0

TOP SECRET

Approved For Release 2003/02/27 : CIA-RDP78T04751A000400010029-0

Approved For Release 2003/02/27 : CIA-RDP78T04751A000400010029-0  
TOP SECRET