

PROBABLE MISSILE-RELATED ACTIVITY
IN CARPATHIAN MILITARY DISTRICT, USSR

25X1D

Photography of [REDACTED] reveals the expansion of a road and rail-served artillery garrison in Uzhgorod, USSR (48-49N 22-17E). This expansion (see Figure 1, item 1) probably began about 1958, since the area was reported to contain new barracks at that time. Additional construction appeared to be in progress in the area at the time of the photography. Another garrison on the north side of Uzhgorod (item 2)

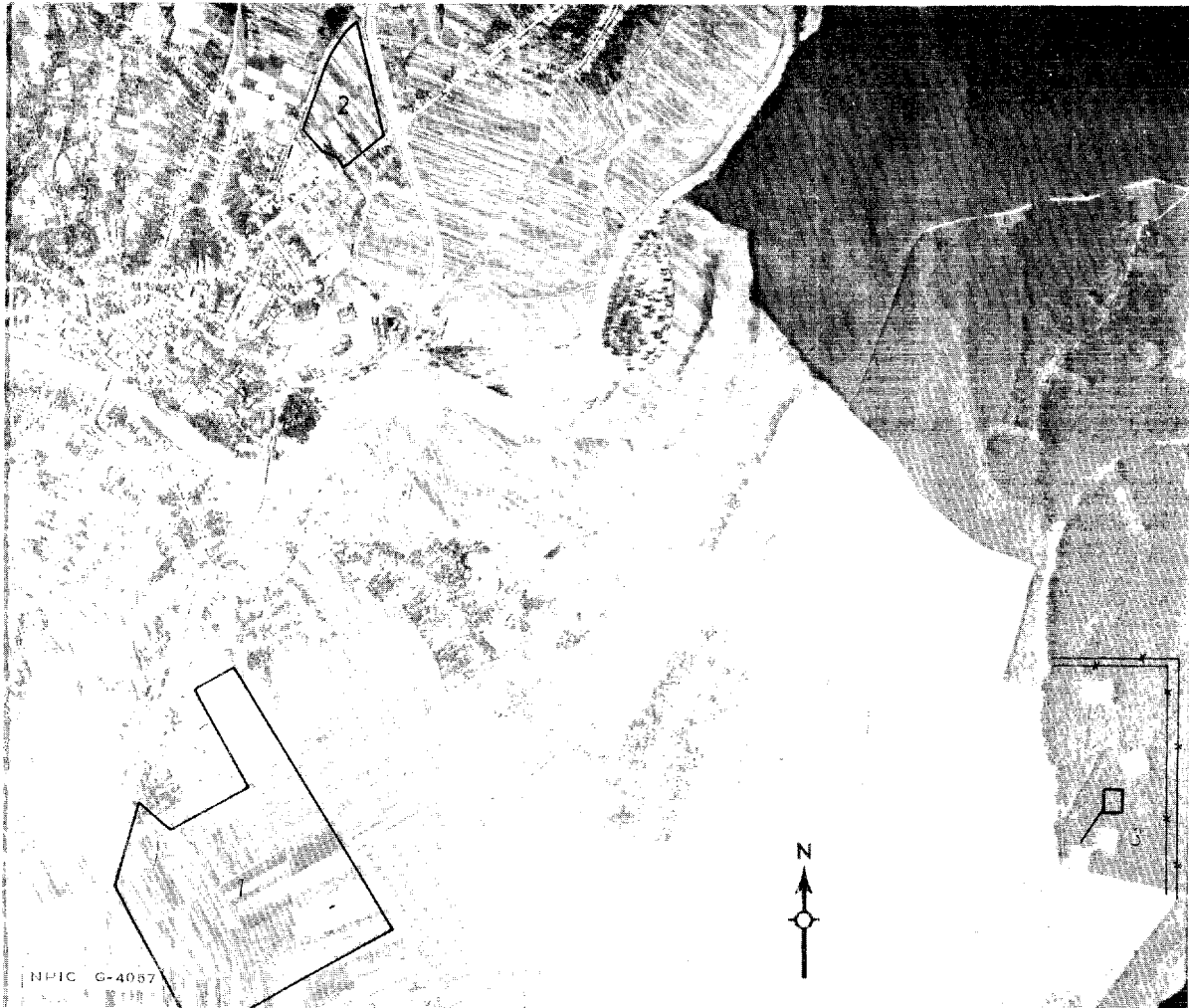


FIGURE 1. UZHGOROD AREA. The red overprint on this [REDACTED] photograph shows the expansion of military facilities since then.

25X1C

Declass Review by
NIMA/DOD

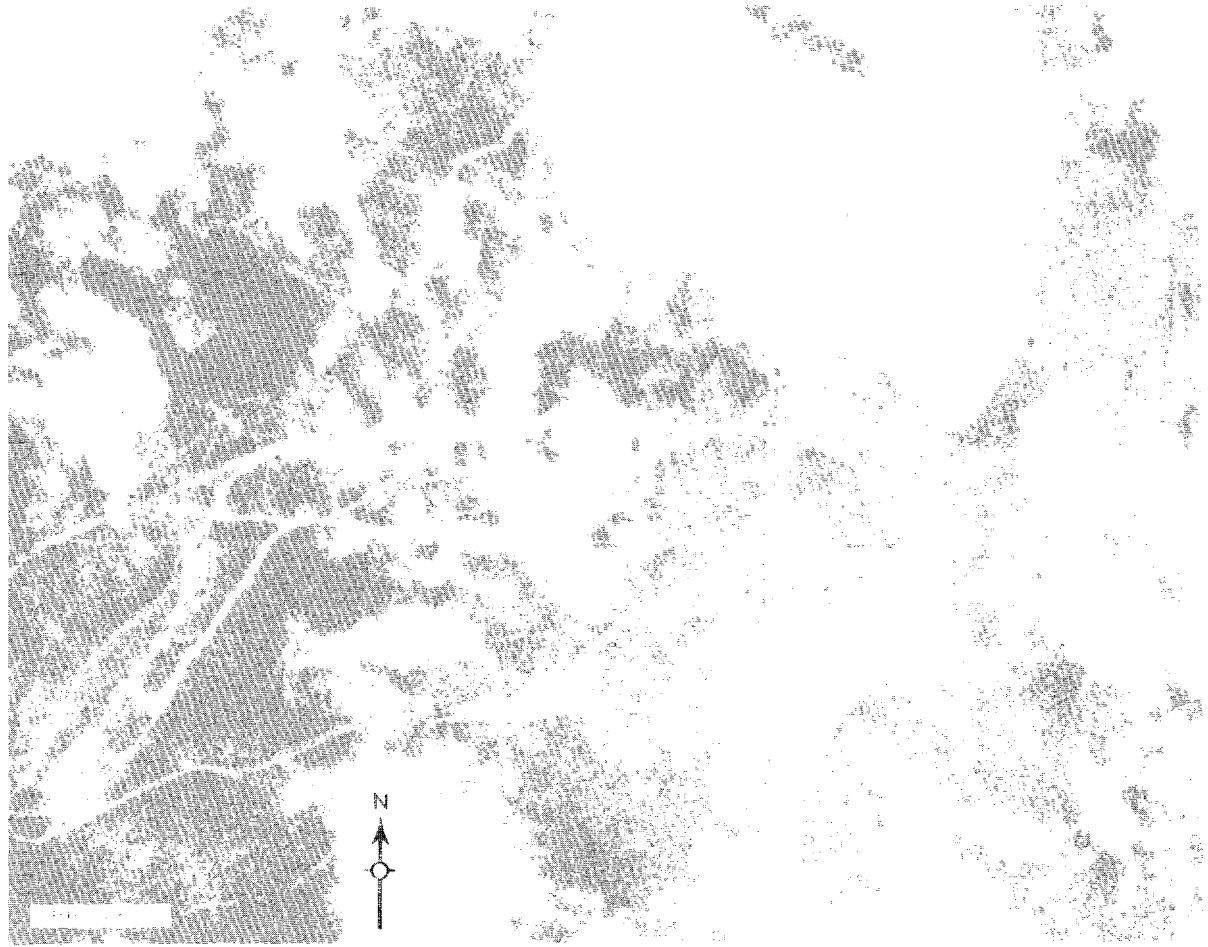


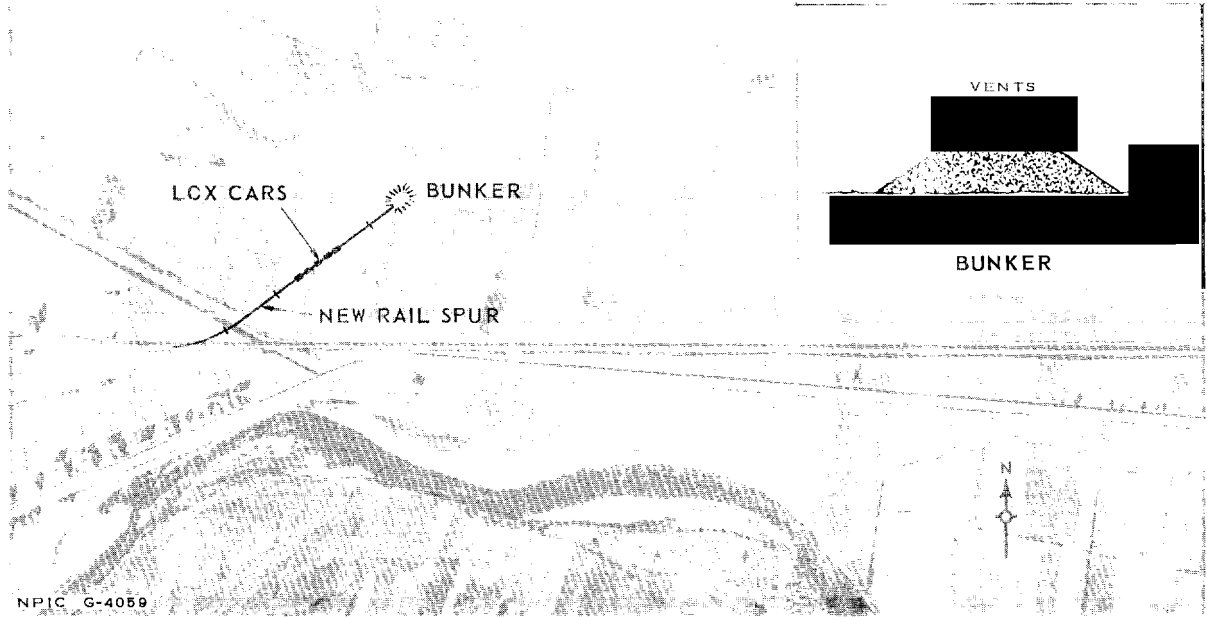
FIGURE 2. MANEUVER AREA 6NM EAST OF UZHGOROD. This area was active at the time of the photography

has been expanded since [redacted] photography. In addition to the two garrisons, a tank unit, a mechanized unit, and a signal unit are reported to be located in Uzhgorod. 1/

An explosives-storage area 3 nm southeast of Uzhgorod (see Figure 1, item 3) has been expanded since the [redacted] photography and additional security has been provided for in the form of forest clearings around the perimeter of the area. A large maneuver area 6 nm east of the town is active (see Figure 2).

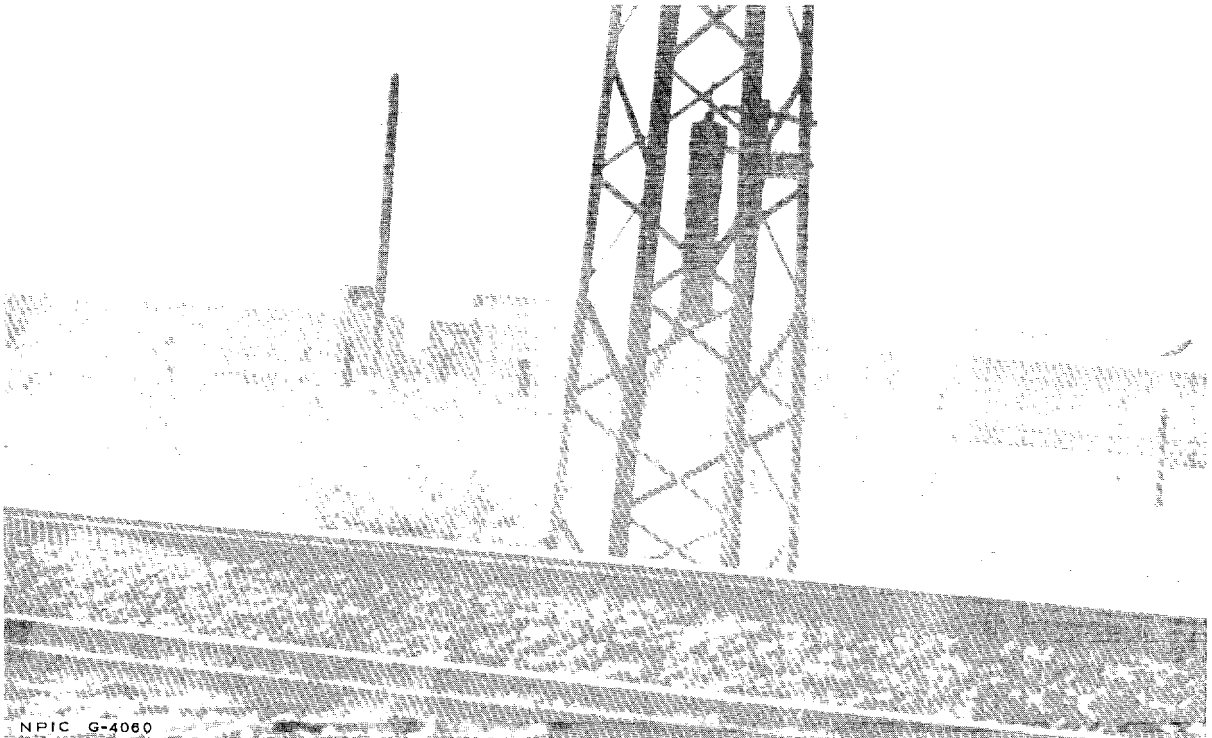
There have been numerous reports of liquid-oxygen (LOX) rail cars in the Uzhgorod-Svalyava-Mukachevo area. LOX cars were observed on eight occasions and photographed from the ground in 1955 on a rail spur

25X1D
25X1D
25X1D



NPIC G-4059
FIGURE 3. RAIL SPUR 6 KM EAST OF MUKACHEVO. The spur is new since the [redacted] photography, used here as a base.

25X1D



NPIC G-4060

FIGURE 4. LOX CARS ON SPUR NEAR MUKACHEVO [redacted]

25X1D

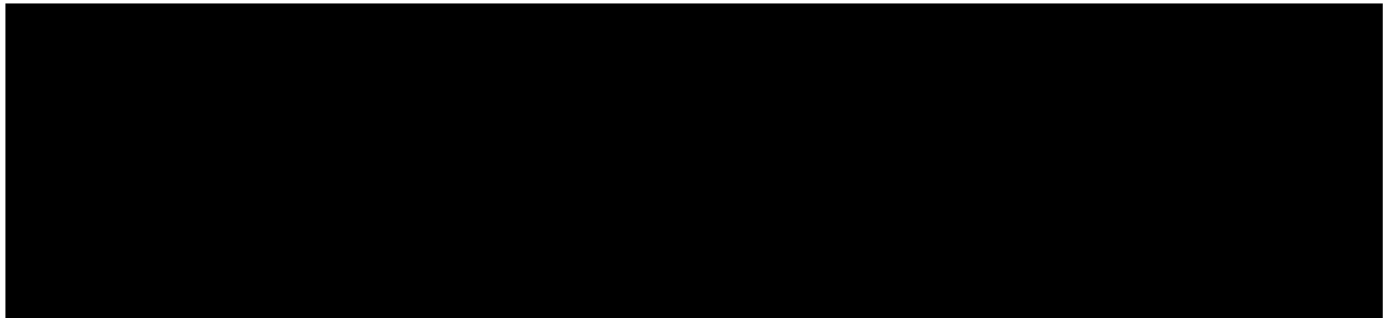
~~TOP SECRET RUFF~~

PIC/JB-18/61

25X1D
25X1D
near Mukachevo, 20 nm southeast of Uzhgorod (see Figures 3 and 4). 2/
3/ (In [REDACTED] no rail spur or activity was present. The Mukachevo area is
under heavy clouds on the [REDACTED] photography.)

The presence of LOX cars, coupled with the military expansion, sug-
gests that the Soviets may have deployed a surface-to-surface missile
unit or units in the Uzhgorod-Mukachevo area, although no suspect launch
sites could be located on the photography. From this area the Soviets
could reach most major targets in Europe with their present operational
medium-range missiles.

REFERENCES



MAPS or CHARTS

- 25X1D
- ACIC. WAC 232 (U)
 - SAC. US Air Target Chart, Series 200, Sheet 0232-24A, 1st ed,
Dec 57, scale 1:200,000 (S)
 - AMS. Series M508, Sheet R49, 2d ed, Feb 54, scale 1:250,000 (U)

DOCUMENTS

- 25X1A
- 1. CIA. [REDACTED] 12 Jan 60 (S/NoFORN/Continued Control)
 - 2. Air. ACSI. SIRAB, Issue No 22, 2 Feb 61 (S/NoFORN)
 - 3. CIA. RR EM 61-4, 10 Feb 61 (S)

~~TOP SECRET RUFF~~

TOP SECRET

JOINT PHOTOGRAPHIC INTELLIGENCE BRIEF

PROBABLE MISSILE-RELATED ACTIVITY IN CARPATHIAN MILITARY DISTRICT, USSR



ARMY



NAVY



CIA

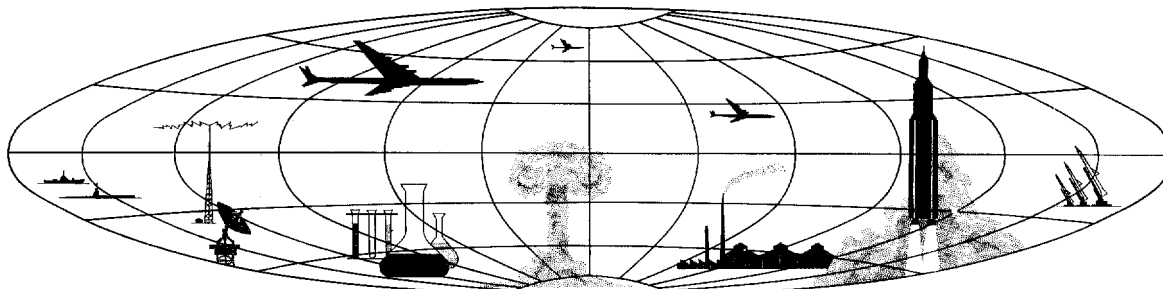
VITAL RECORDS COPY

Handle Via **TALENT - KEYHOLE** Control Only

WARNING

This document contains classified information affecting the national security of the United States within the meaning of the espionage laws U.S. Code Title 18, Sections 793, 794, and 798. The law prohibits its transmission or the revelation of its contents in any manner to an unauthorized person, as well as its use in any manner prejudicial to the safety or interest of the United States or for the benefit of any foreign government to the detriment of the United States. It is to be seen only by U.S. personnel especially indoctrinated and authorized to receive TALENT-KEYHOLE information. Its security must be maintained in accordance with KEYHOLE and TALENT regulations.

Published and Disseminated by CENTRAL INTELLIGENCE AGENCY Photographic Intelligence Center



TOP SECRET