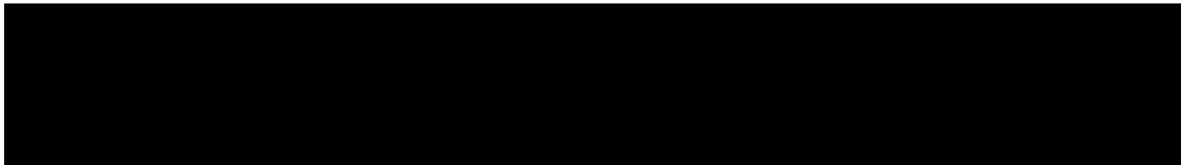


JOINT PHOTOGRAPHIC INTELLIGENCE BRIEF
ARMY-NAVY-CIA

(Published and Disseminated by CIA/PIC)

SUBJECT : Similarities Between Configura- NO : PIC/JB-113/60
tion Observed Near Stalingrad
and New Type SAM Launch Area DATE : 19 July 1960
at Kapustin Yar, USSR.

25X1D



DOCUMENTS

25X1C

1. CIA. TDCS-3/443, 465, Probable Soviet SAM Site of Unusual Config-
uration Near Stalingrad, 14 Jul 60 (S/Noform [REDACTED])
2. CIA. PIC/JR-14/60, Surface-to-Air Missile Facilities, Kapustin
Yar/Vladimirovka Missile Test Center, USSR, Jul 60 (TCS)

25X1C

REMARKS

Comparison of a sketch of an unusual configuration observed northwest of Stalingrad with aerial photography of Kapustin Yar/Vladimirovka Missile Test Center indicates that the reported configuration near Stalingrad bears a striking resemblance to a new type surface-to-air missile (SAM) launch site at Kapustin Yar.

The sketch of the Stalingrad configuration (see Figure 1) is based on a visual observation made from the air in late [REDACTED] 1/. The source describes the configuration as having a very symmetrical appearance which looks like a pinwheel. The roads and pads which make up the site are white, and appear to be concrete and flush with the surface of the ground. Nine pads are on tangents out from the circular road, while three identical pads inside the circle are off a single tangent from the circular road.

25X1D

Aerial photography of [REDACTED] reveals a new type SAM launch area at the Kapustin Yar/Vladimirovka Missile Test Center. 2/ Launch

25X1D

VITAL RECORDS COPY

Declass Review by
NIMA/DOD

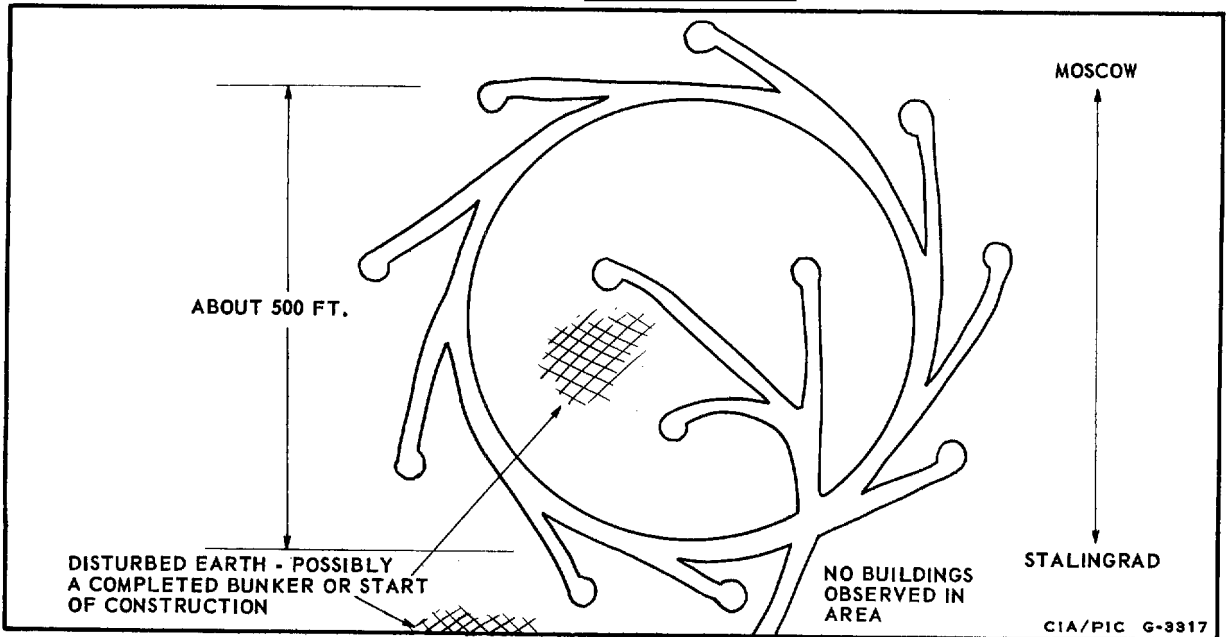


FIGURE 1. PINWHEEL CONFIGURATION OBSERVED NEAR STALINGRAD. This sketch is reproduced from CIA report TDCS-3/443,465.

Site "B" at this area has many similarities with the configuration observed near Stalingrad (see Figures 1 and 2). Major similarities are summarized below:

Stalingrad Configuration
(as reported by source)

Launch Site "B"
(as revealed on photography)

Very symmetrical appearance, like that of a pinwheel

Very symmetrical appearance, and if extended would form a circular pinwheel

9 pads on tangents out from a circular road

4 pads on tangents out from a semicircular road, and if extended could accommodate 9 pads

Roads and pads appear flush with surface of the ground

Roads and pads are flush with surface of the ground

Roads and pads appear to be concrete

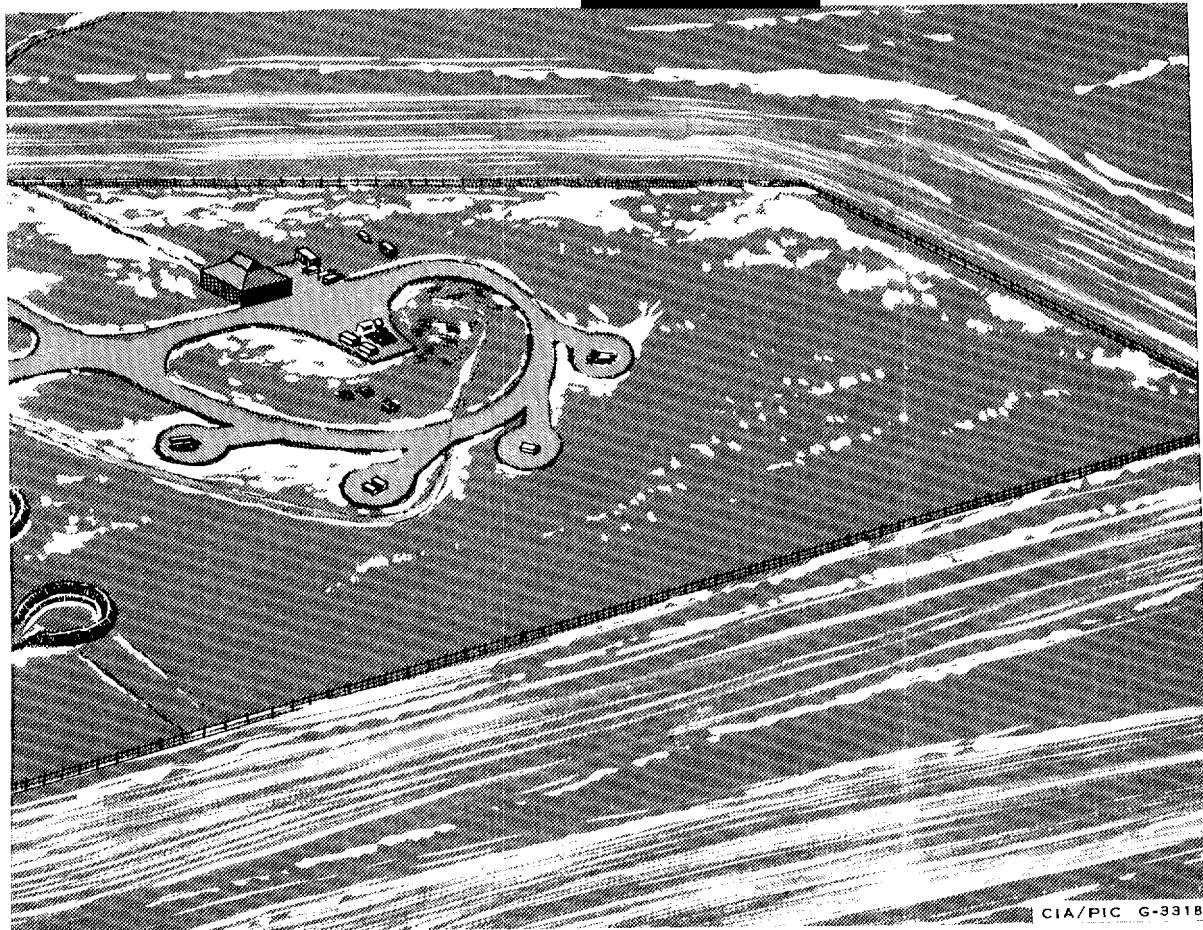
Roads and pads are concrete

Circular road approximately 500 feet in diameter

Semicircular road approximately 500 feet in diameter

Circular pad approximately 40 feet in diameter at end of each tangential road

Circular pad approximately 55 feet in diameter at end of each tangential road



CIA/PIC G-3318

FIGURE 2. LAUNCH SITE "B" AT KAPUSTIN YAR/VLADIMIROVKA MISSILE TEST CENTER. Four tangential roads with circular pads at the ends extend out from the semicircle. This site has many similarities with the pin-wheel configuration observed near Stalingrad.

25X1D

Based on information provided by the source, a scan was made of [REDACTED] photography covering an area of approximately 30 square miles northwest of Stalingrad. The unusual configuration described by the source is not apparent on the [REDACTED] photography.

25X1D

25X1D