

JOINT PHOTOGRAPHIC INTELLIGENCE BRIEF
ARMY-NAVY-CIA

(Published and Disseminated by CIA/PIC)

SUBJECT :	Surface-to-Air Missile Site	NO :	PIC/JB-92/60
LOCATION:	7.5 nm NW of Verkhne Neyvinskiy, USSR	DATE :	20 May 1960
		COORD:	57°21'N 59°55'E

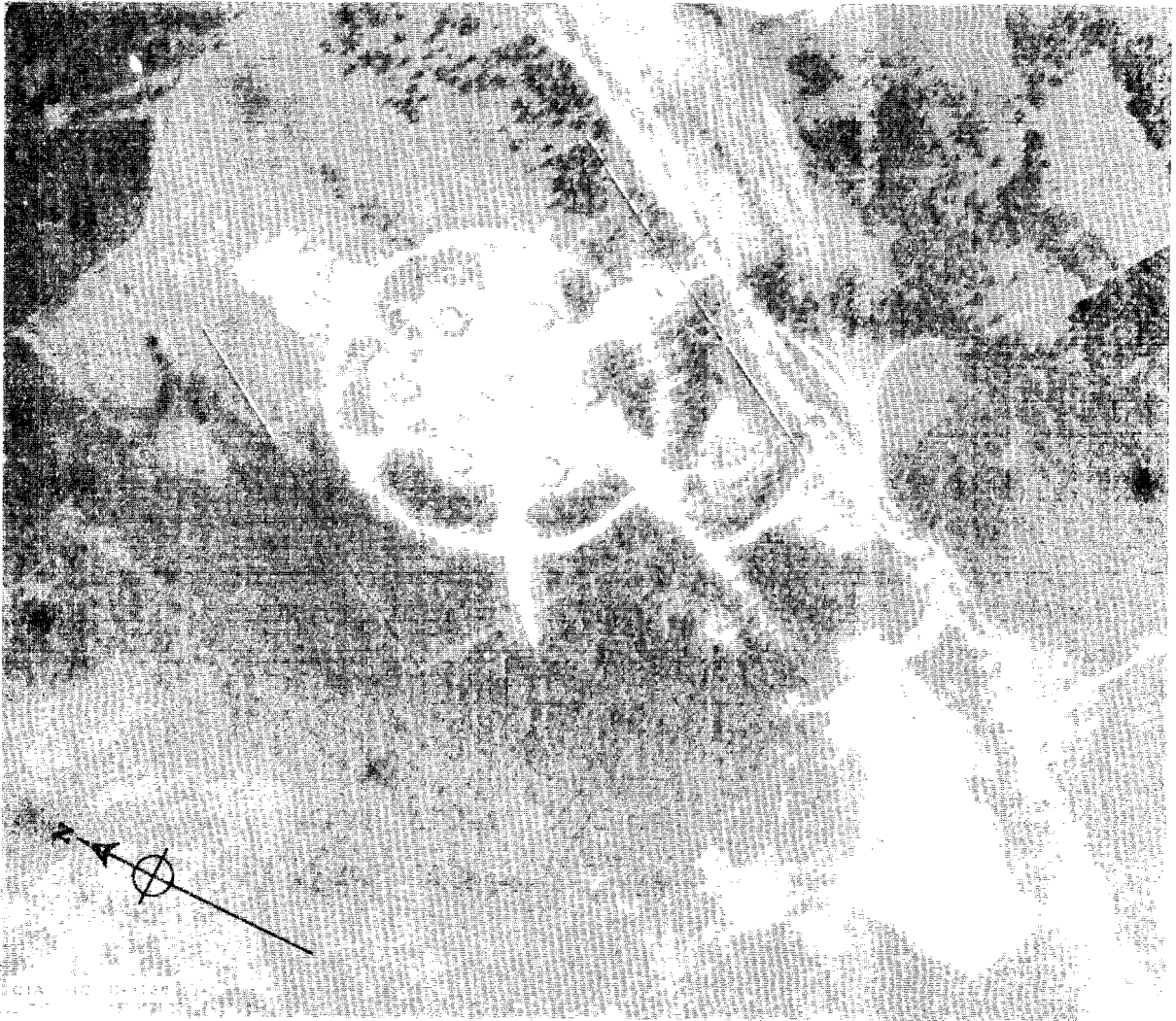
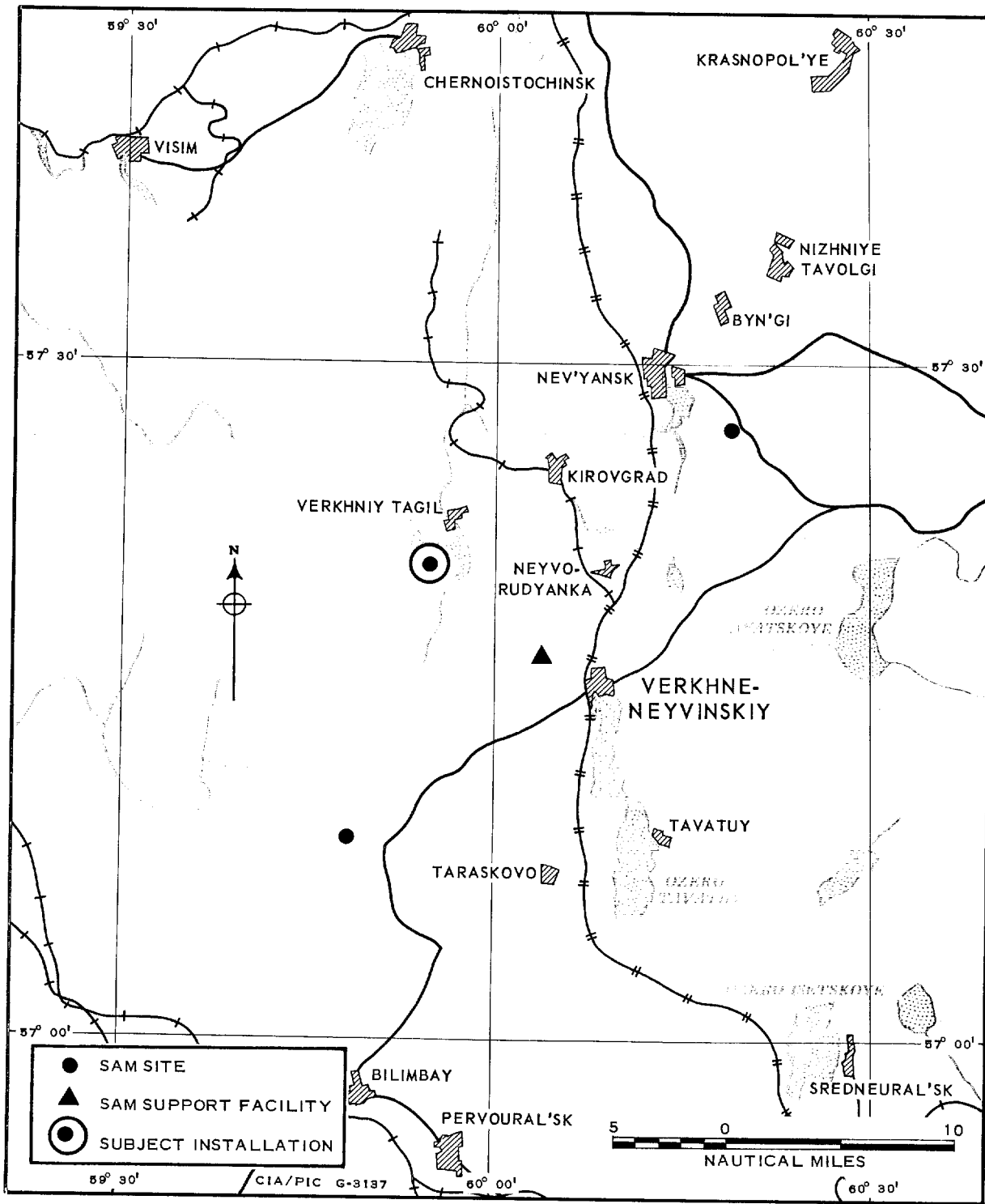


Figure 1. SAM SITE 7.5 NM NW OF VERKHNE NEYVINSKIY.

Declass Review by
NIMA/DOD

VITAL RECORDS COPY



PIC/JB-92/60

REFERENCE POINT:

25X9

LOCATION:

7.5 nm northwest of reference point.

FUNCTION:

One of a group of sites deployed for defense of the Verkhne Neyvinskiy Atomic Energy Plant.

SITE STATUS:

Late stages of construction. Not operational.

LAUNCH FACILITIES:

Launch revetments completed. Launchers not emplaced.

MISSILES:

One canvas-covered missile on trailer and two possible canvas-covered missiles on trailers located in vehicle parking area.

ELECTRONICS AND ASSOCIATED EQUIPMENT:

None visible.

COMMUNICATIONS:

None visible.

OVERHEAD POWER and/or COMMUNICATIONS LINE:

None visible.

TRANSPORTING EQUIPMENT:

Five prime movers, 3 tractors with missile trailers, and 5 unidentified vehicles are located in the vehicle parking area.

SUPPORT AREA

Structures

<u>Description</u>	<u>Roof Type</u>	<u>No Stories</u>	<u>Dimensions (ft)</u>
Barracks	Gable	2	135 x 40
Barracks	Gable	2	80 x 40

PIC/JB-92/60

Barracks	Gable	2	75 x 40
Support building u/c	--	-	65 x 50
Support building u/c	--	-	35 x 25

Other features include 15 pyramidal tents each [redacted] square. 25X1D

SECURITY:

Board fence approximately 1,250 x 1,100 feet encloses operations area.

REMARKS:

Guidance revetments and missile hold revetments are in late stages of construction. Service roads are graded.

Site is situated in a forested area on relatively flat terrain.

A SAM support facility 7.5 nm to the southeast serves the site.

MAP REFERENCES:

WAC 156; AMS-Series N 501, Sheet 40-9.

25X1D

