

ILLEGIB

D R A F T  
2 July 1971

*7/15/71*

[Redacted]

ILLEGIB

1. If a force of two pounds is applied to the horizontal surface at the front of the optical pod mount, vertical displacement shall not exceed 0.005 inches. *Do meet specs.*

2. With the electrical carriage lock engaged, and the table in a horizontal position, movement in x or y shall not exceed 0.010 inches with the application of 2 lbs. force; With the application of 4 lbs. force, the movement in x or y shall not exceed 0.020 inches. The force shall be applied in the same direction as the movement to be measured.

The method of measurement is as follows:

- (a) Specified force applied in plus direction.
- (b) Deflection gage zeroed *WITH FORCE APPLIED.*
- (c) Specified force applied in minus direction.
- (d) Deflection read with minus force applied

3. The carriage, in manual mode and fully stopped in a horizontal position, shall <sup>move</sup> ~~be started~~ with an applied force on the optics mount parallel to the x or y direction of not less than 1 pound and not more than 2 pounds. This specification ~~applies to~~ applies to all optics mount positions not less than 1 inch from the mechanical limits of travel. *The mount shall be carrying any of the specified optical systems.*

4. The motorized carriage with the speed control at minimum shall move at a rate not to exceed 0.015 inches per second in either x or y

*.001-.002  
x-y greater than .250"/sec -  
time to attain 0.5-1.0 sec,  
(4-5) time from release to stop -*

*#1 -  
#2 - .003 in "y" - 2"*

direction. This speed shall be attained within 0.5 seconds of actuation of the direction control and without resetting of the speed control.

5. The motorized carriage with the speed control at maximum, shall move at a rate of at least 0.250 inches per second. This speed shall be attained within 0.5 seconds of actuation of the direction control and without resetting the speed control.

6. Control of carriage speed by the speed control shall be linear between the maximum and minimum positions.

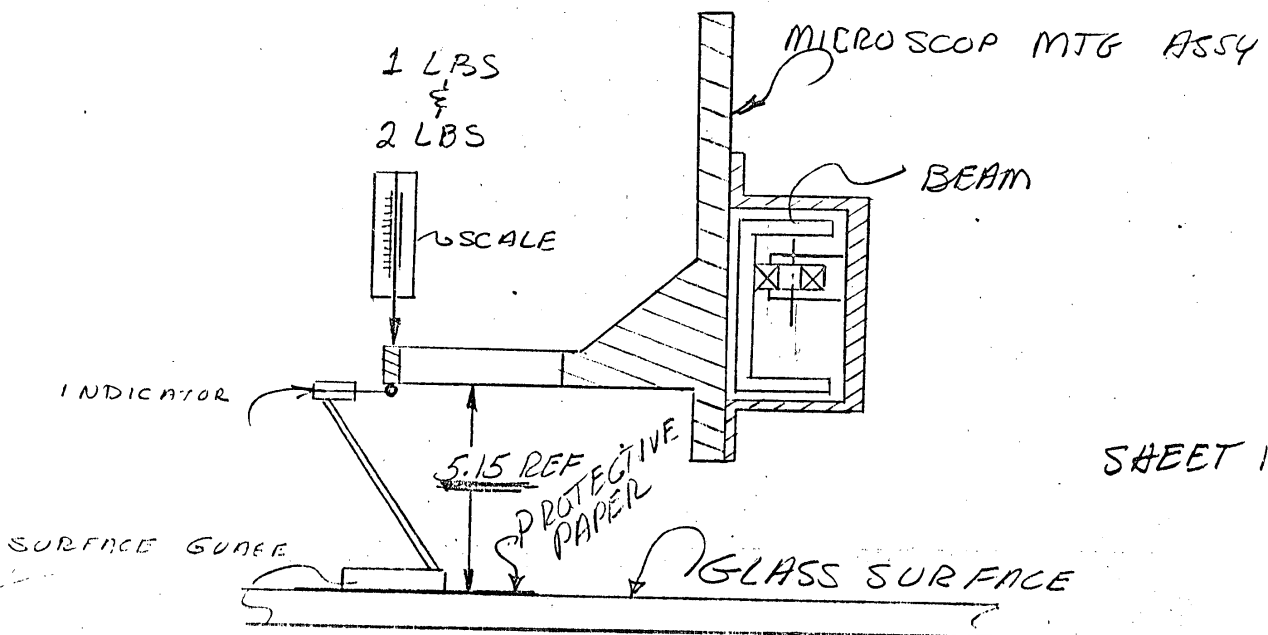
7. When the direction control is released, motion of the carriage shall cease in not more than 0.5 seconds. *Can hold this (0.5 sec)*

8. With the carriage in motion at any speed, and with no resetting of the speed control, acceleration of the carriage shall not exceed 0.001 inches per second per ~~second~~ second.

*and/or* 9. ~~Mechanical~~ <sup>selectively</sup> controls capable of moving the optics mount in x and y direction shall be incorporated. This control shall be capable of moving the carriage in increments of not more than 0.001 inch. Dead motion of this control shall not exceed 30° in rotational or 0.250 inches if linear. *This control to be enable only when selected carriage locks are engaged.*

# MLT1540 - 4 TABLE

Recd 22 July 71  
7/12/71

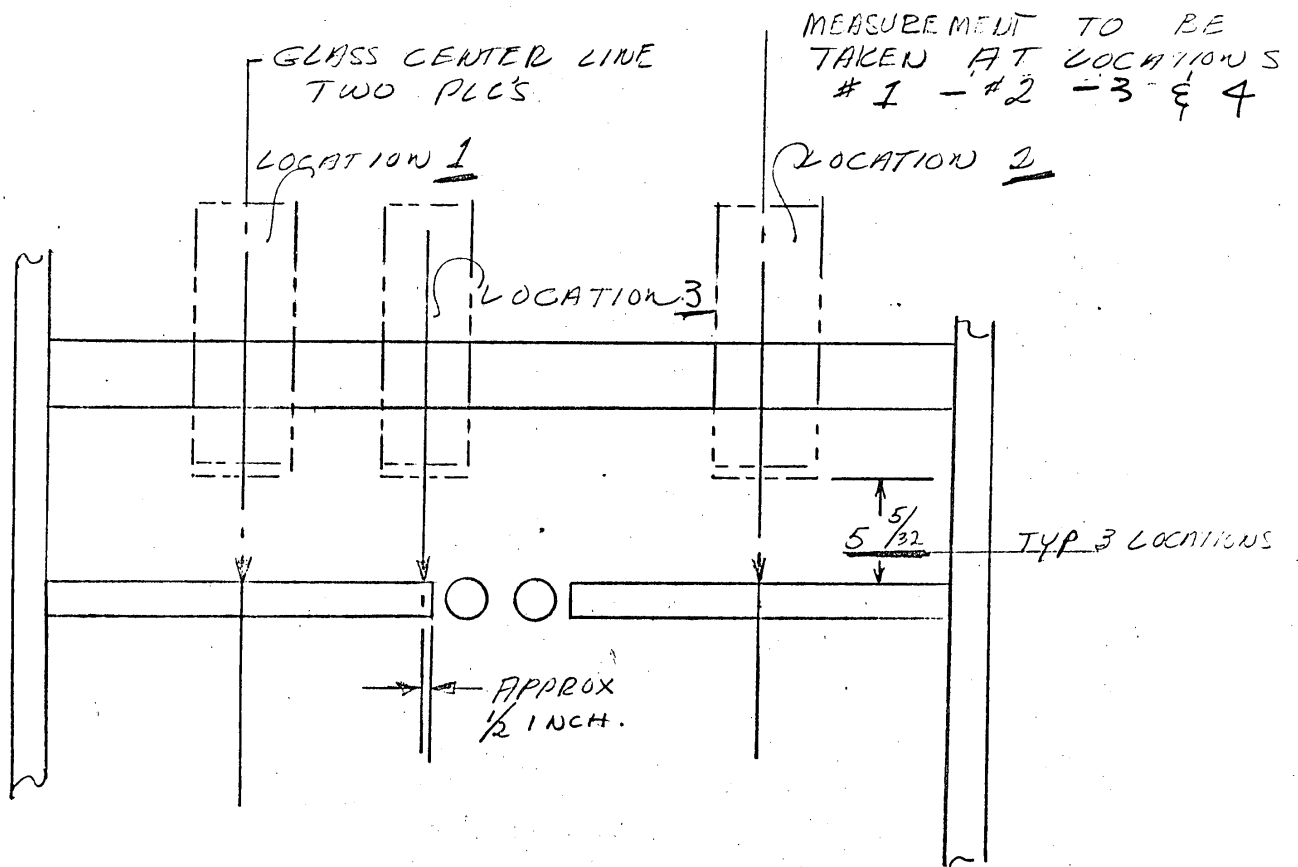


SHEET 1 OF 4

- STEP 1. PLACE INDICATOR NOTED (ZERO READING)
2. APPLY 2 LBS AT LOCATIONS 1-2 & 3
3. TAKE INDICATOR READING OF DEFLECTION
4. RECORDS ON TRAVLER

MCT 1540

7/13/71



MLT 154A

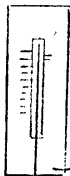
Approved For Release 2005/06/23 : CIA-RDP78B05171A000400030051-4

7/12/71

1 LBS  
2 LBS

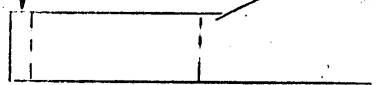
APPROX  
DEFLECTION  
DIRECTION

INDICATOR



SCALE

TAKE READING AT THIS  
POINT WITH MICROSCOPE  
AT LOCATION 3



BEAM

APPROX  
4.00

SURFACE  
GUAGE

GLASS

TABLE FRONT

7/15/11

DEFINITION OF MEASURE MEANT

CUM. ID	LOCATION 1		LOCATION 2		LOCATION 3		LOCATION 4	
	1 LB	2 LBS	1 LB	2 LBS	1 LB	2 LBS	1 LB	2 LBS
40	-0025	0005	-0025	-005	-003	-006	-0005	-0015
24	-0025	0005	-003	-005	-003	-006	-0008	-0015
33	002	-005	-0025	-005	-0035	0065	-0007	-002
31	0025	-0045	002	-004	-003	-006	-001	-0015
32	003	-005	002	-004	-003	-007	-001	-002
36	002	-004	-003	-006	-003	-006	-0005	-0015
37	0025	-005	-0025	-005	-0035	-0065	-001	-002
38	003	-006	-0025	-005	-0035	-007	-001	-002
39	0025	-005	-0025	-0045	-003	-0065	-001	-002