

Declassified in Part - Sanitized Copy Approved for Release 2013/09/11 : CIA-RDP78B05167A001900300001-1

~~CONFIDENTIAL~~

NATIONAL PHOTOGRAPHIC



INTERPRETATION CENTER

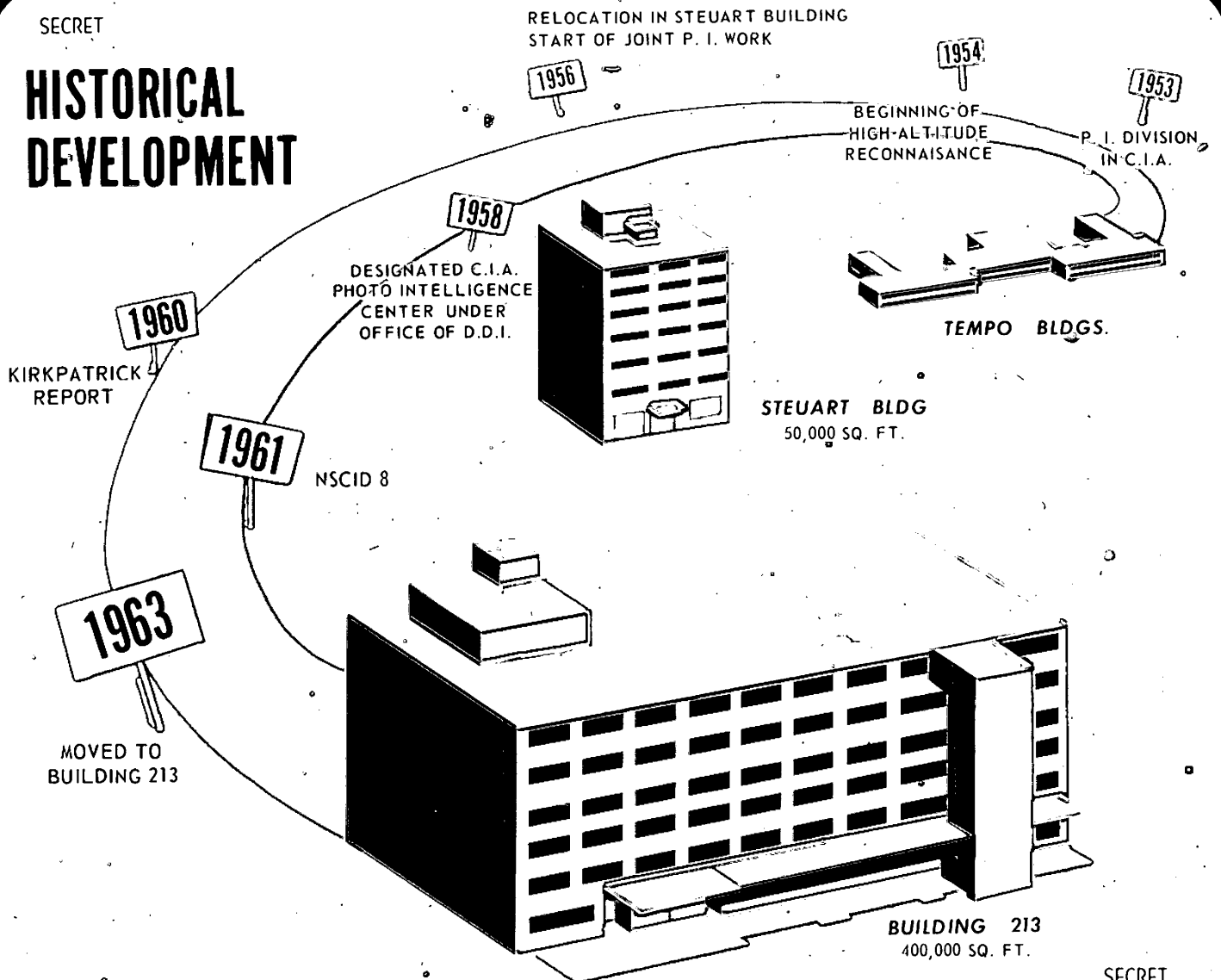
NPIC K-2461 (10/65)

~~CONFIDENTIAL~~

Declassified in Part - Sanitized Copy Approved for Release 2013/09/11 : CIA-RDP78B05167A001900300001-1

SECRET

HISTORICAL DEVELOPMENT



SECRET

SECRET

HISTORY OF NPIC

1953

PI DIVISION IN CIA

1954

BEGINNING OF HIGH ALTITUDE RECONNAISSANCE PHOTOGRAPHY

1956

RELOCATED IN STEUART BUILDING STARTED JOINT PI WORK

1958

DESIGNATED CIA PHOTO INTELLIGENCE CENTER UNDER OFFICE OF DDI

1960

**KIRKPATRICK REPORT RECOMMENDED ESTABLISHMENT OF NPIC
USIB ACCEPTED PROPOSAL**

1961

NSC ISSUED NSCID 8 ESTABLISHING NPIC

1963

MOVED TO BUILDING 213

SECRET

SECRET

NSCID 8 (18 JANUARY 1961) CREATED NPIC

- **PROVIDED BY DCI**
- **DIRECTOR DESIGNATED BY DCI, APPROVED BY SECRETARY OF DEFENSE**
- **PERSONNEL & OTHER SUPPORT JOINTLY PROVIDED**
- **PERSONNEL UNDER FUNCTIONAL CONTROL OF DIRECTOR, NPIC -
UNDER ADMINISTRATIVE CONTROL OF PARENT ORGANIZATION**
- **DEPARTMENTAL PI RESPONSIBILITIES TO CONTINUE**
- **ADMINISTRATION OF NPIC TO PASS TO SECRETARY OF DEFENSE IN TIME OF WAR**

SECRET

SECRET

NPIC RESPONSIBILITIES AS STATED IN NSCID 8

- **PRODUCE AND DISSEMINATE IMMEDIATE AND DETAILED PHOTO INTERPRETATION REPORTS USING ALL COLLATERAL SOURCES**
- **DOES NOT PRODUCE FINISHED INTELLIGENCE**
- **SUPPORT DEPARTMENTAL NEEDS AS CAN BE PROVIDED WITHOUT DEGRADATION OF NATIONAL ACTIVITIES**
- **MAINTAIN A CENTRAL PHOTO FILE**
- **DEVELOP MECHANIZED SYSTEMS FOR RECOVERY, SELECTION, COLLATION OF DATA**
- **DEVELOP SPECIALIZED EXPLOITATION EQUIPMENT**
- **CONSULT WITH USIB DEPARTMENTS, AGENCIES, & COMMITTEES**

SECRET

SECRET

NPIC MISSION AND FUNCTIONS

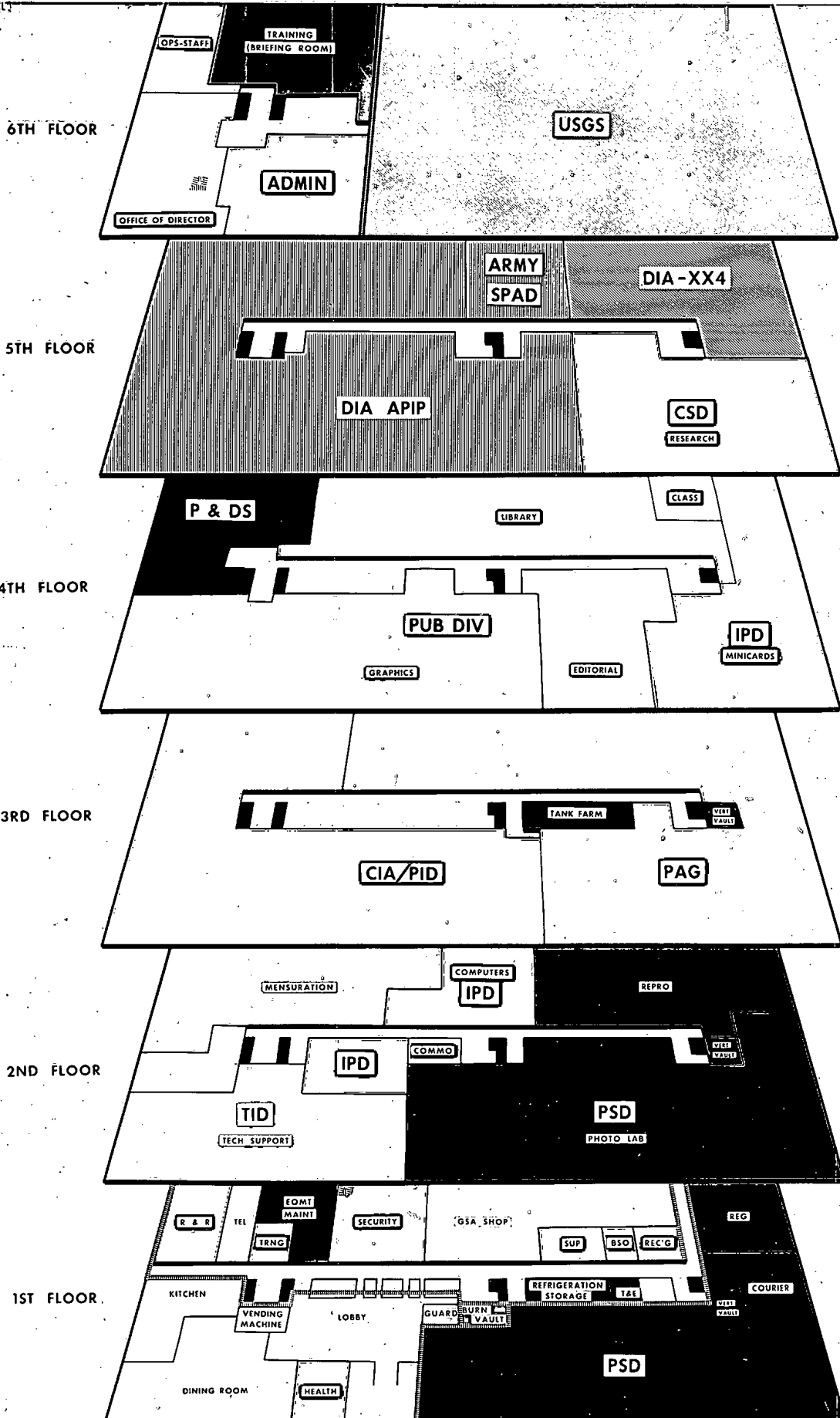
MISSION

THE NATIONAL PHOTOGRAPHIC INTERPRETATION CENTER IS CHARGED WITH PRODUCING PHOTOGRAPHIC INTERPRETATION REPORTS, PROVIDING PHOTOGRAPHIC INTELLIGENCE SERVICES, IN SUPPORT OF THE NATIONAL INTELLIGENCE EFFORT, FURNISHING SUCH ADDITIONAL SUPPORT TO DEPARTMENTAL AND AGENCY INTERESTS AS CAN BE PROVIDED WITHOUT DEGRADATION OF NATIONAL RESPONSIBILITIES, AND PROMOTING AN INTEGRATED AND COORDINATED INTERDEPARTMENTAL EFFORT IN THE EXPLOITATION OF PHOTOGRAPHY FOR INTELLIGENCE PURPOSES.

FUNCTIONS

- 1 PRODUCE PHOTOGRAPHIC INTERPRETATION REPORTS.
- 2 PROVIDE PHOTOGRAPHIC INTELLIGENCE SERVICES.
- 3 MAINTAIN CENTRAL FILE OF PHOTOGRAPHIC DATA.
- 4 ARRANGE FOR EXCHANGE OF PHOTOGRAPHS AND PHOTOGRAPHIC DATA.
- 5 RECOMMEND CODES, INDEXES, AND MECHANIZED SYSTEMS FOR RECOVERY, SELECTION, AND COLLATION OF PHOTOGRAPHIC DATA.
- 6 PREPARE PHOTOGRAPHIC AND PHOTOGRAMMETRIC INTELLIGENCE SUPPORT REQUIREMENTS.
- 7 PROVIDE ANALYTIC AND TECHNICAL PHOTOGRAPHIC INTELLIGENCE SERVICES IN SUPPORT OF SPECIAL COLLECTION AND EXPLOITATION REQUIREMENTS.
- 8 ENGAGE IN OR SPONSOR, THE DEVELOPMENT OF SPECIALIZED EQUIPMENT AND PROVIDE INFORMATION TO INTERESTED ELEMENTS OF THE INTELLIGENCE COMMUNITY.
- 9 PROVIDE AND MAINTAIN ACCOMMODATIONS AND FACILITIES FOR NATIONAL AND DEPARTMENTAL ACTIVITIES.
- 10 EXAMINE AND MAKE RECOMMENDATIONS AS TO ANY SPECIAL SECURITY CONTROLS.
- 11 CONSULT WITH INDIVIDUAL DEPARTMENTS, AGENCIES, AND COMMITTEES ON PHOTOGRAPHIC INTELLIGENCE EXPLOITATION ACTIVITIES.

CONFIDENTIAL



MPIC, J-3508, (REV. 2/65)

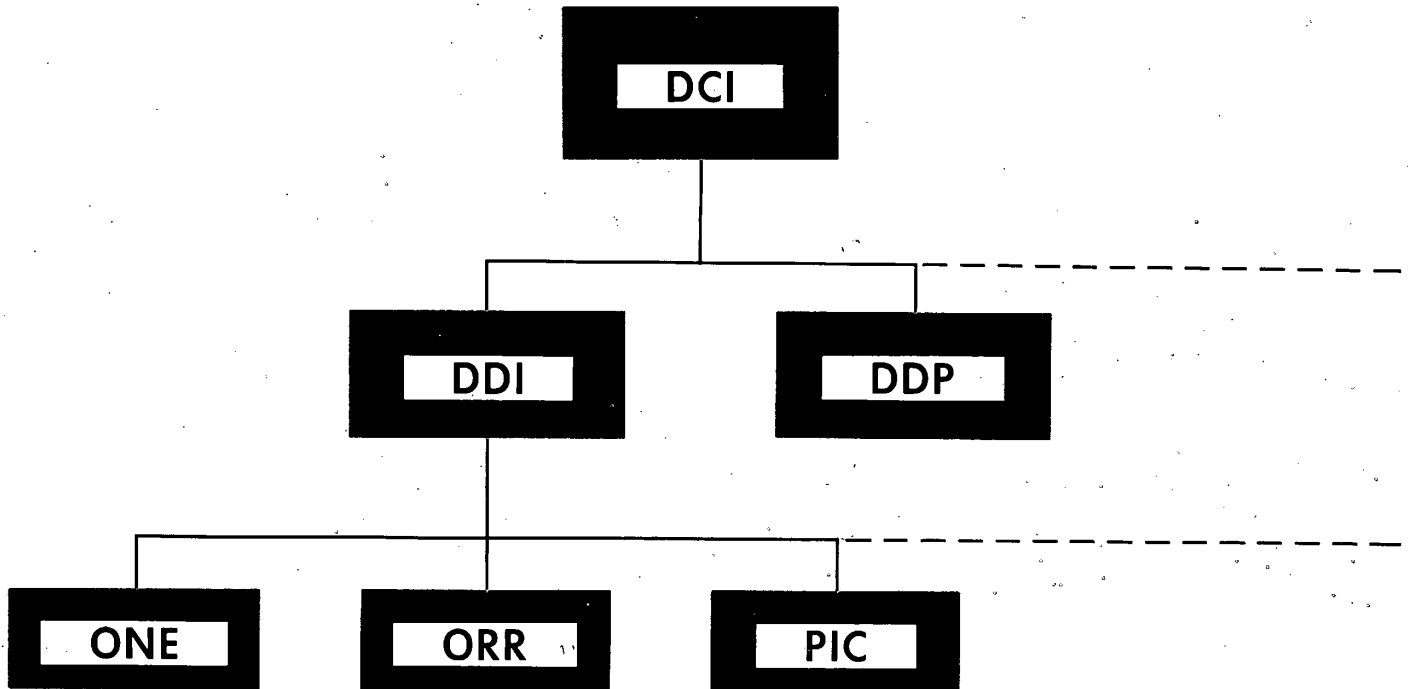
CONFIDENTIAL

SECRET

NATIONAL PHOTOGRAPHIC INTERPRETATION CENTER

PHOTOGRAPHIC INTELLIGENCE CENTER

OCTOBER 1958



NPIC K-0050 (4/63)

SECRET

TOP SECRET CHESS RUFF
Handle Via TALENT/KEYHOLE Central System Only

NATIONAL PHOTOGRAPHIC INTERPRETATION CENTER

EVOLUTION OF PHOTOGRAPHIC EXPLOITATION

CIA - NPIC

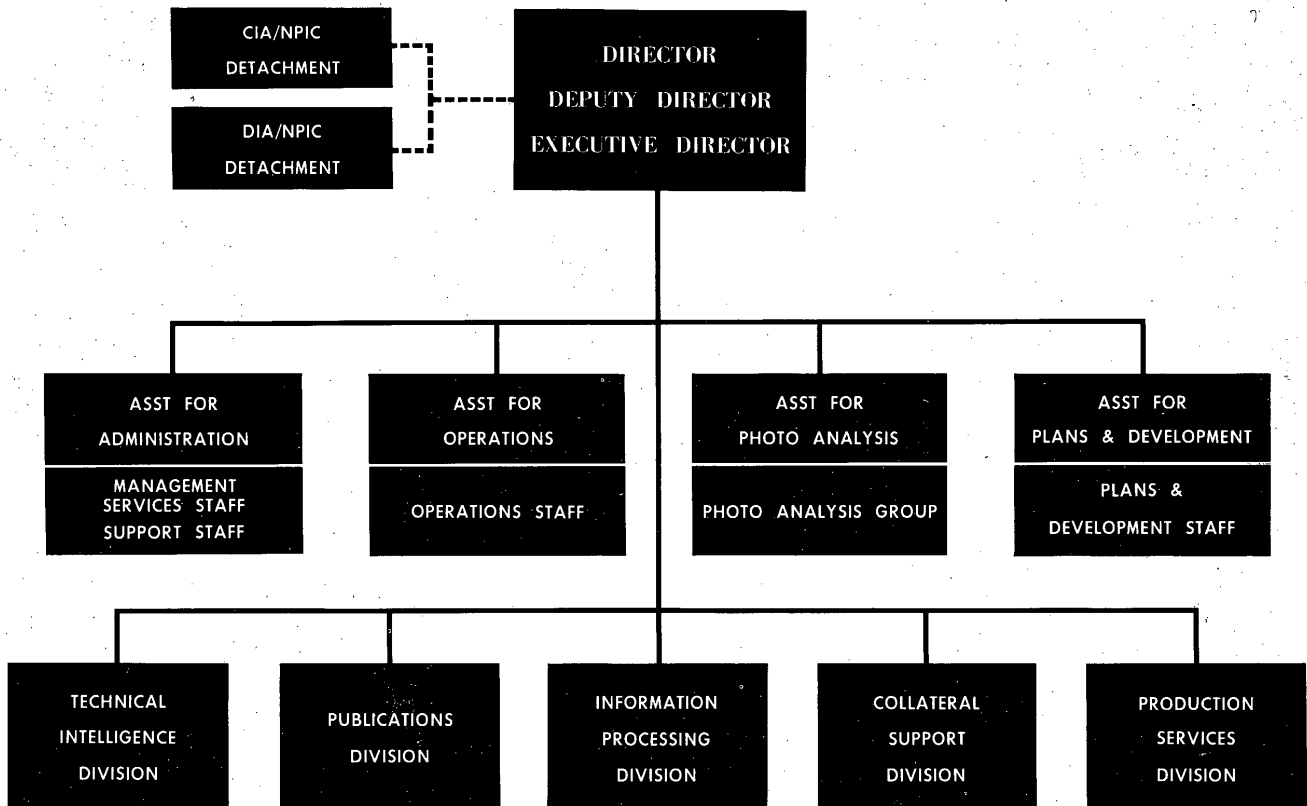
PRE U-2 PERIOD	1952 - 1956
U-2 PERIOD	1956 - 1960
KH-4 PERIOD	1960 - 1963
KH-7 PERIOD	1963 - PRESENT
FUTURE	1966 - 1970

TCS-86400/65 NPIC

TOP SECRET CHESS RUFF
Handle Via TALENT/KEYHOLE Central System Only

SECRET

NATIONAL PHOTOGRAPHIC INTERPRETATION CENTER



SECRET

TOP SECRET, CHESS
Handle Via TALENT Control Systems Only

NATIONAL PHOTOGRAPHIC INTERPRETATION CENTER

PRE U-2 PERIOD

1952 - 1956

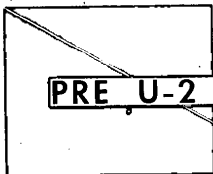
- PI CAPABILITY CREATED IN CIA**
- MISCELLANEOUS INPUTS**
- PLANNING FOR U-2**

TCS-B6401/65 NPIC

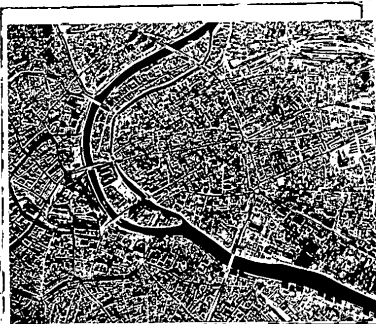
TOP SECRET CHESS
Handle Via TALENT Control Systems Only

COPY 3

SECRET



PRE U-2 PHOTOGRAPHY



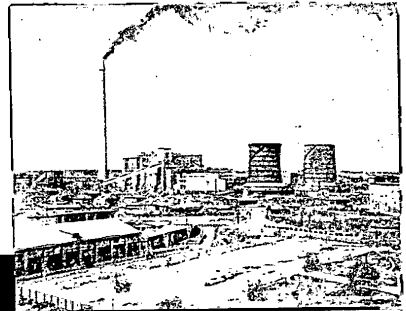
GX (GERMAN) WORLD WAR II



GENETRIX



SENSINT



CLANDESTINE



**UNITED STATES
WORLD WAR II**

REF ID: A66604 (1/75)

SECRET

TOP SECRET CHESSE
PART 4 OF 12 (U) Central Security Agency

NATIONAL PHOTOGRAPHIC INTERPRETATION CENTER

U-2 PERIOD

1956 - 1960

- FORMATION OF HTAUTOMAT
- MOVE TO STEUART BUILDING
- TEAM CONCEPT OF EXPLOITATION
- JOINT PARTICIPATION OF MILITARY SERVICES
- ESTABLISHMENT OF PI CENTER
- ITEK REPORT
- U-2 SHOOTDOWN

TCS-86402/65 NPIC

TOP SECRET CHESSE
PART 4 OF 12 (U) Central Security Agency

COPY 3

TOP SECRET CRESS
Handle Via Talent Control Systems Only

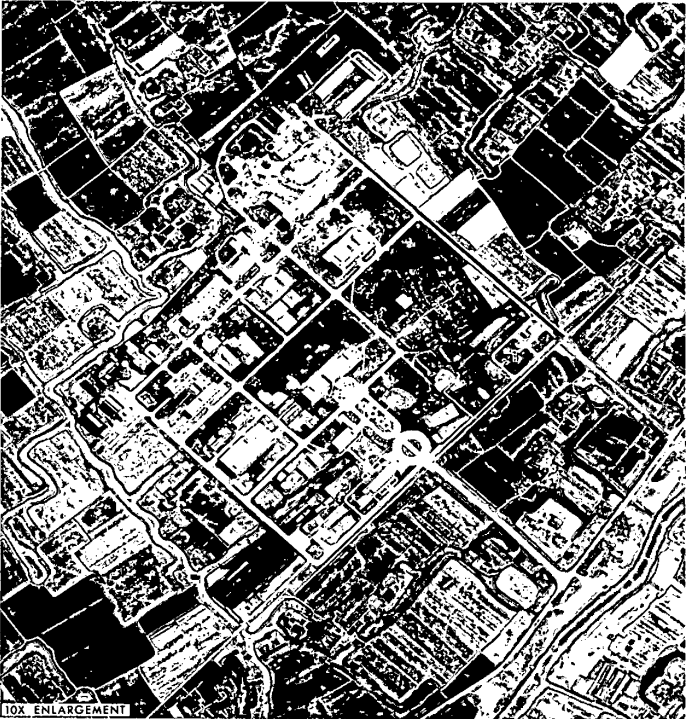
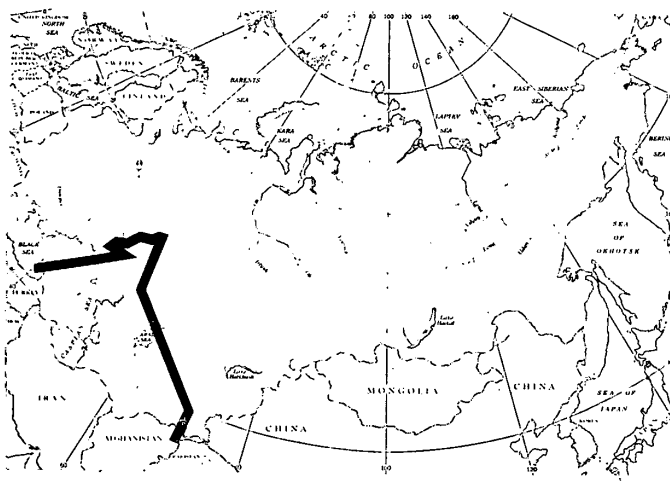
NATIONAL PHOTOGRAPHIC INTERPRETATION CENTER

U-2

TYPICAL COVERAGE AND QUALITY

U-2 DATA

GROUND COVERAGE	130,000	SNM
FOCAL LENGTH	36"	
PHOTO RESOLUTION	40	L/MM
GROUND RESOLUTION	2.5'	



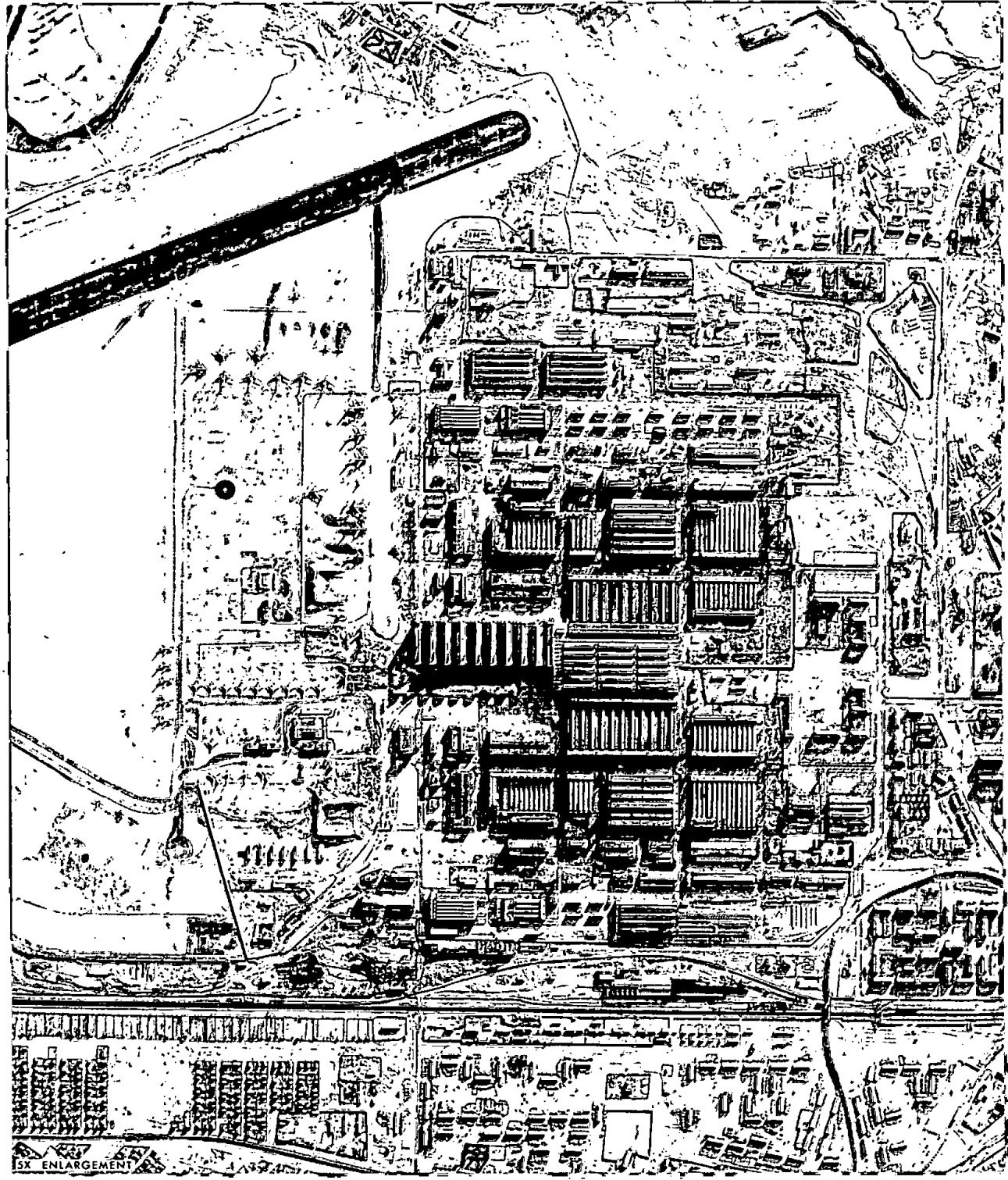
TCS:86416/65 NPIC

TOP SECRET CRESS
Handle Via Talent Control Systems Only

COPY 3

TOP SECRET CHESS
Handle Via TALENT Control Systems Only

U-2 QUALITY
KUYBYSHEV, USSR



15X ENLARGEMENT

TCS-86410/65 NPIC

TOP SECRET CHESS
Handle Via TALENT Control Systems Only

TOP SECRET CHESS
Center for Special Systems and

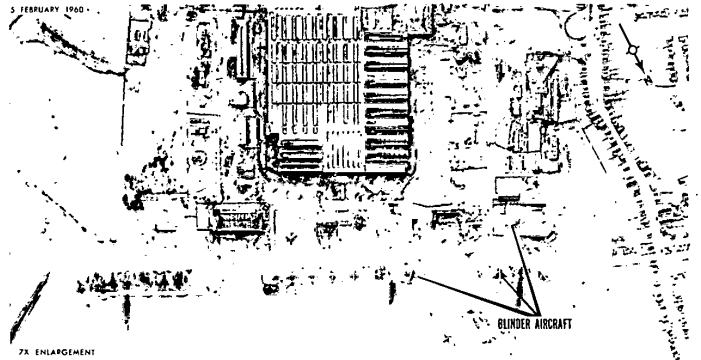
NATIONAL PHOTOGRAPHIC INTERPRETATION CENTER

PHOTOGRAPHICALLY-DERIVED INTELLIGENCE HIGHLIGHTS

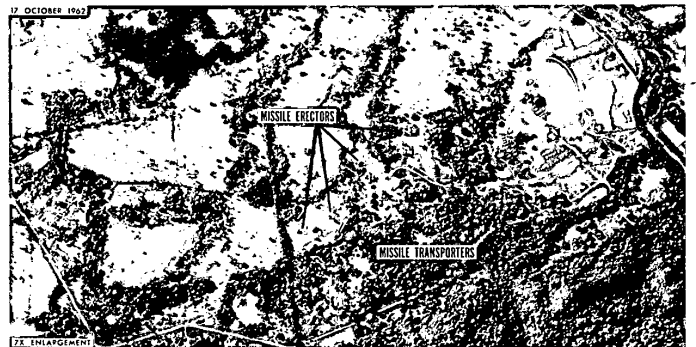
50X1

U-2

BLINDER AIRCRAFT AIRCRAFT PLANT 22, KAZAN, USSR



LAUNCH SITE NO 1 SAN CRISTOBAL, CUBA



TOP SECRET CHESS
Center for Special Systems and

TOP SECRET RUFF
Handle Via TALENT RETRIEVE Control System Only


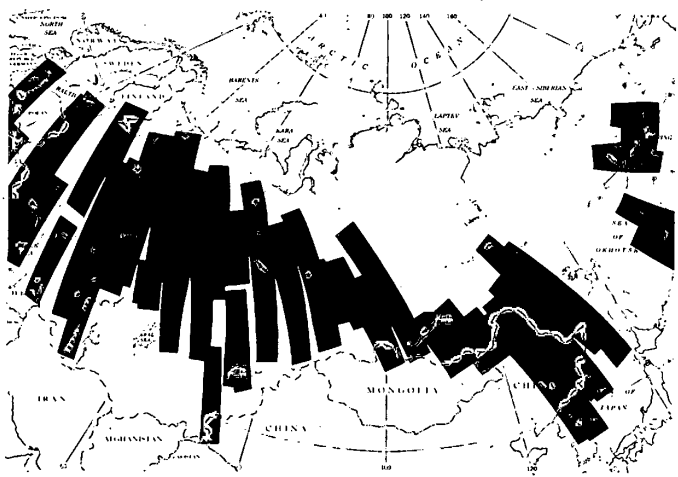
NATIONAL PHOTOGRAPHIC INTERPRETATION CENTER

KH-4

TYPICAL COVERAGE AND QUALITY

KH-4 DATA

GROUND COVERAGE	12,500,000	SQM
FOCAL LENGTH	24"	
PHOTO RESOLUTION	100	L/MM
GROUND RESOLUTION	10'	



20X ENLARGEMENT

TCS-86430/65 NPIC

TOP SECRET RUFF
Handle Via TALENT RETRIEVE Control System Only

COPY 3

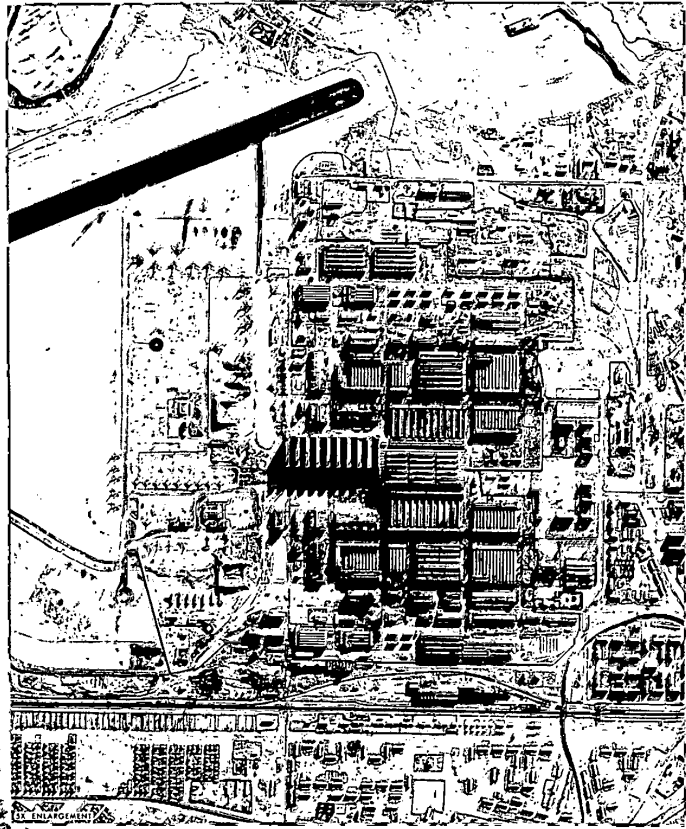
TOP SECRET RUFF <small>Handle Via TALENT-KEYHOLE Control System Only</small>	<small>NATIONAL PHOTOGRAPHIC INTERPRETATION CENTER</small>
KH-4 PERIOD	
1960 - 1963	
<input type="checkbox"/>	FIRST KH MISSION - AUGUST 1960
<input type="checkbox"/>	NSCID 8 - NPIC
<input type="checkbox"/>	PLANNING & OCCUPATION OF BUILDING 213
<input type="checkbox"/>	CUBAN CRISIS
<small>TCS-80403/65 NPIC</small>	TOP SECRET RUFF <small>Handle Via TALENT-KEYHOLE Control System Only</small>

TOP SECRET RUFF PART 4 TO TALENT CENTER SYSTEM BOX	NATIONAL PHOTOGRAPHIC INTERPRETATION CENTER
KH-7 PERIOD 1963 - TO DATE	
<input type="checkbox"/>	FIRST KH-7 MISSION - JULY 1963
<input type="checkbox"/>	KH-4 DOUBLE BUCKET - AUGUST 1963
<input type="checkbox"/>	CURRENT MAJOR PRODUCTS - TYPE & VOLUME
<input type="checkbox"/>	RESPONSIBILITY FOR CIA DEPARTMENTAL ELEMENT
TCS-86404/65 NPIC	TOP SECRET RUFF PART 4 TO TALENT CENTER SYSTEM BOX

TOP SECRET CHESS RUFF
From the 1925-1975 Group Series 800

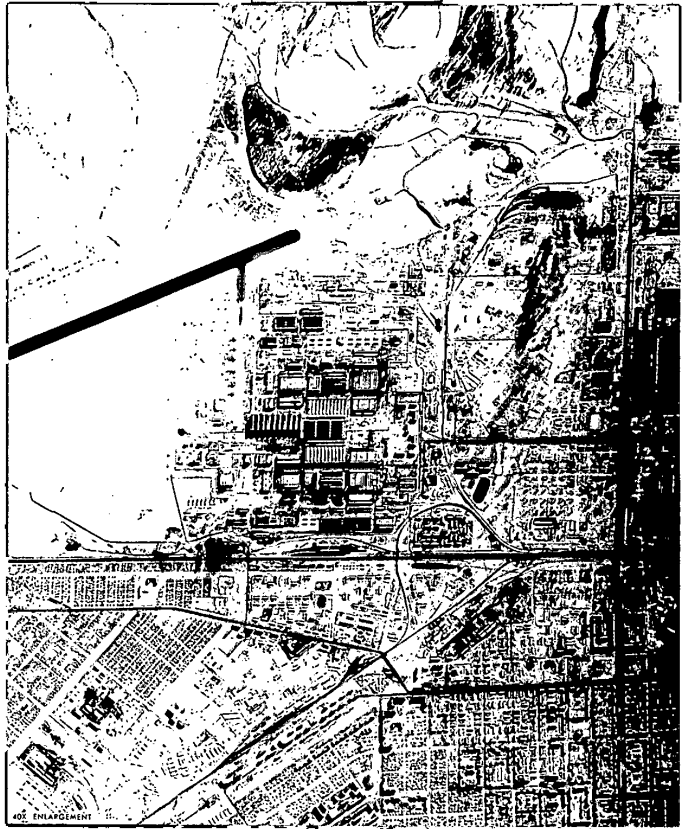
SYSTEMS QUALITY COMPARISON

U-2
KUYBYSHEV, USSR



TCS-80-117/55 NPIC

KH-4
KUYBYSHEV, USSR



TOP SECRET CHESS RUFF
From the 1925-1975 Group Series 800


TOP SECRET RUF

INTERNAL PRODUCTION INTELLIGENCE COPY

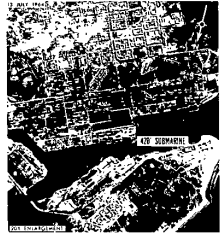
50X1

PHOTOGRAPHICALLY-DERIVED INTELLIGENCE HIGHLIGHTS KH-4

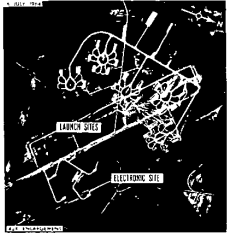
SINGLE SILO ICBM COMPLEX
ZHANGIZ-TOBE, USSR



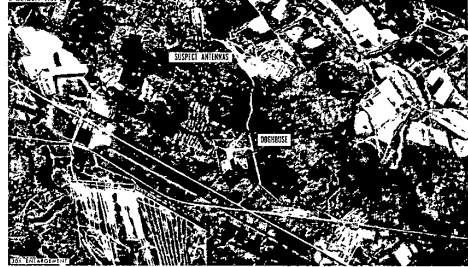
SUBMARINE ACTIVITY
SEVERODVINSK, USSR



AMM/SAM LAUNCH COMPLEX
TALLINN, USSR



SUSPECT PHASED-ARRAY RADAR
MOSCOW, USSR



TOP SECRET RUF

TOP SECRET RUFF
Handle Via TALENT-ACTIVABLE Control System Only

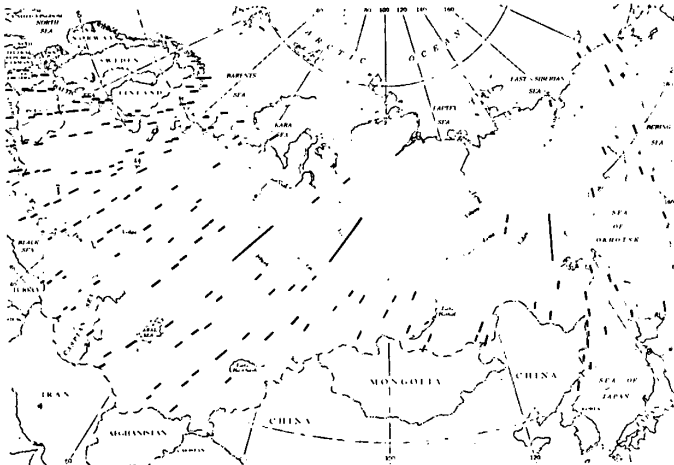
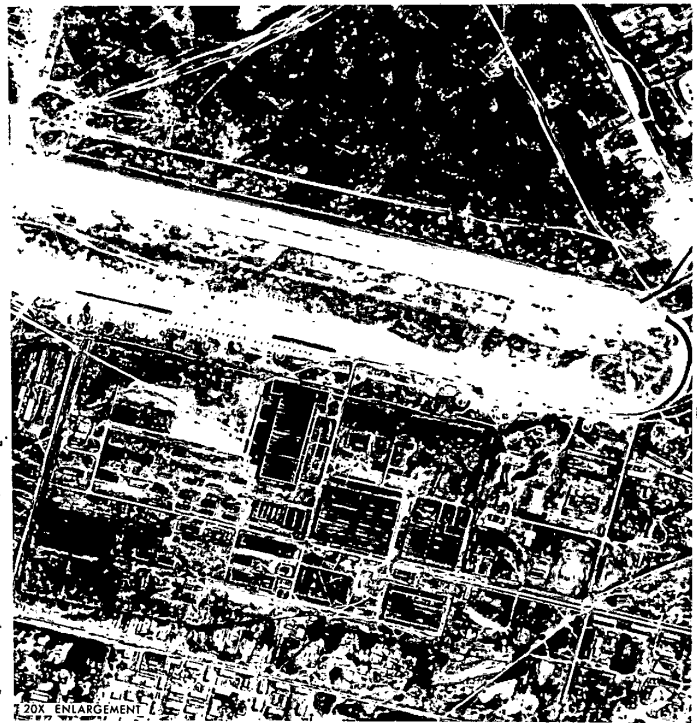
NATIONAL PHOTOGRAPHIC INTERPRETATION CENTER

KH-7

TYPICAL COVERAGE AND QUALITY

KH-7 DATA

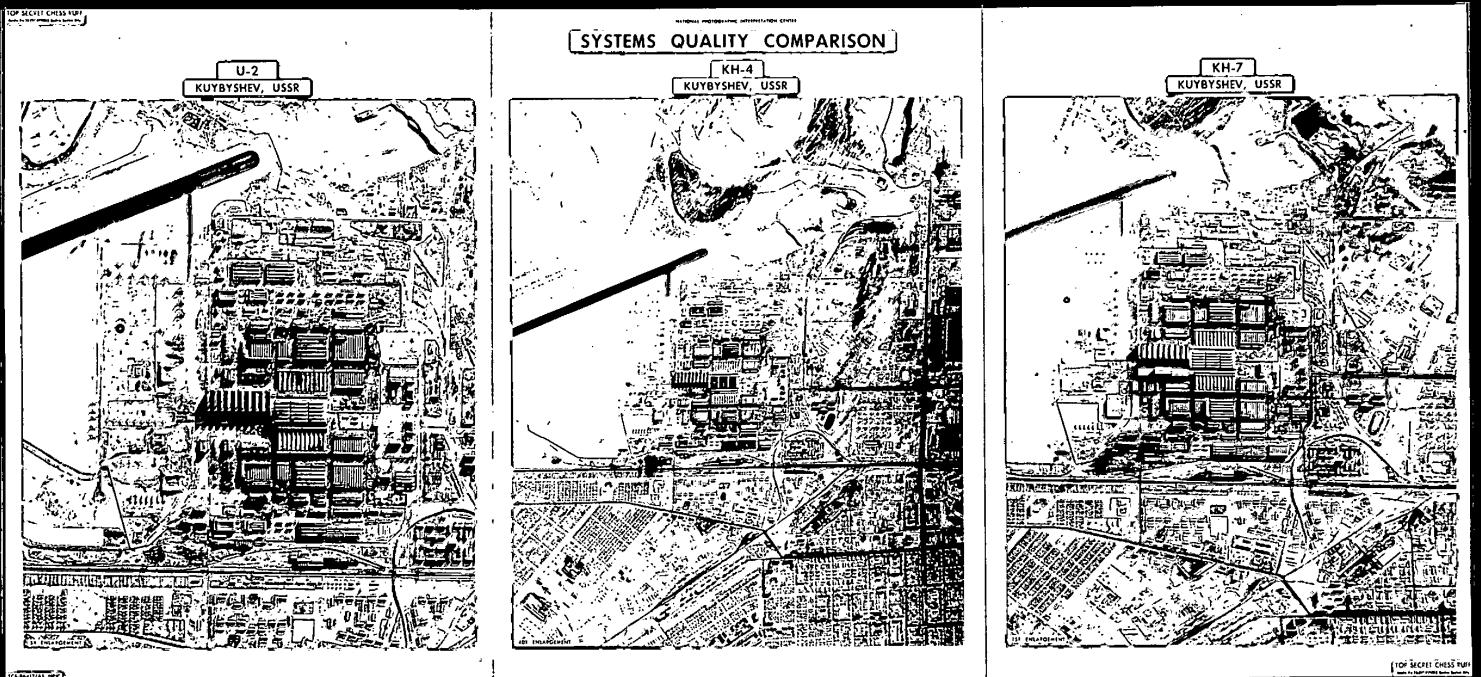
GROUND COVERAGE-----(MONO)470,000 SNM
 (STEREO) 180,000 SNM
FOCAL LENGTH-----77"
PHOTO RESOLUTION-----100 L/MM
GROUND RESOLUTION-----3.0'

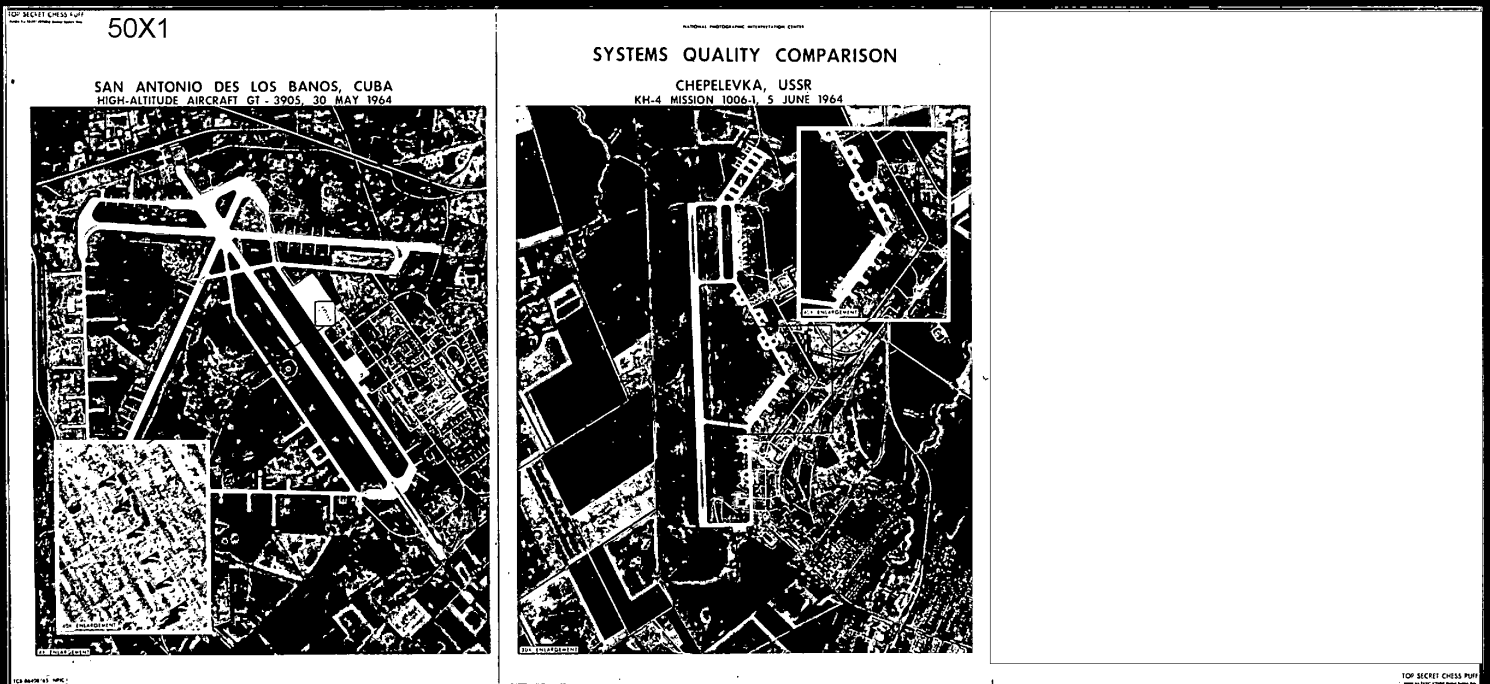


TCS-86431/65 NPIC

TOP SECRET RUFF
Handle Via TALENT-ACTIVABLE Control System Only

COPY 3





TOP SECRET CHESS RUFF
Plan to Treat Visible Central System Only

NATIONAL PHOTOGRAPHIC INTERPRETATION CENTER

THE FUTURE

1966 - 1970

- **ONCOMING SATELLITE PHOTOGRAPHIC SYSTEMS**
- **ONCOMING AIRCRAFT SYSTEMS**
- **OTHER IMAGE FORMING SYSTEMS**
- **WORKLOAD MEASUREMENT AND
MANAGEMENT PLANNING FOR NPIC**

TCS-88405/65 NPIC

TOP SECRET CHESS RUFF
Plan to Treat Visible Central System Only

COPY 3

Page Denied

Declassified in Part - Sanitized Copy Approved for Release 2013/09/11 : CIA-RDP78B05167A001900300001-1

TOP SECRET - CHESSEX-RUFF

Handle Via TALENT-KEYHOLE Control Systems Only



KH-4 (SEARCH)



KH-7 (SPOTTING)



U-2, "B" CONFIGURATION

Blackpool Lancaster

MANCHESTER

LINE OF FLIGHT

LONDON

TCS-86392, 65 NPIC

TOP SECRET - CHESSEX-RUFF

Handle Via TALENT-KEYHOLE Control Systems Only

TOP SECRET RUFF
Paper Via TALENT TELETYPE Control System 84c

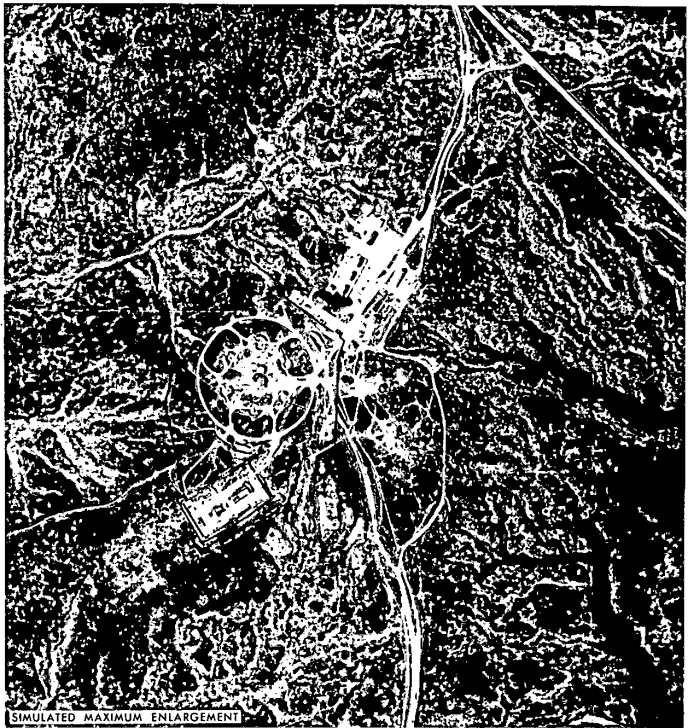
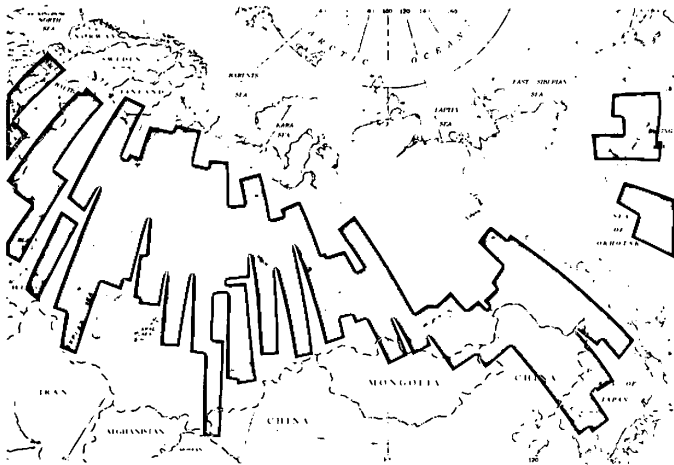
NATIONAL PHOTOGRAPHIC INTERPRETATION CENTER

KH-9

TYPICAL COVERAGE AND QUALITY

KH-9 DATA

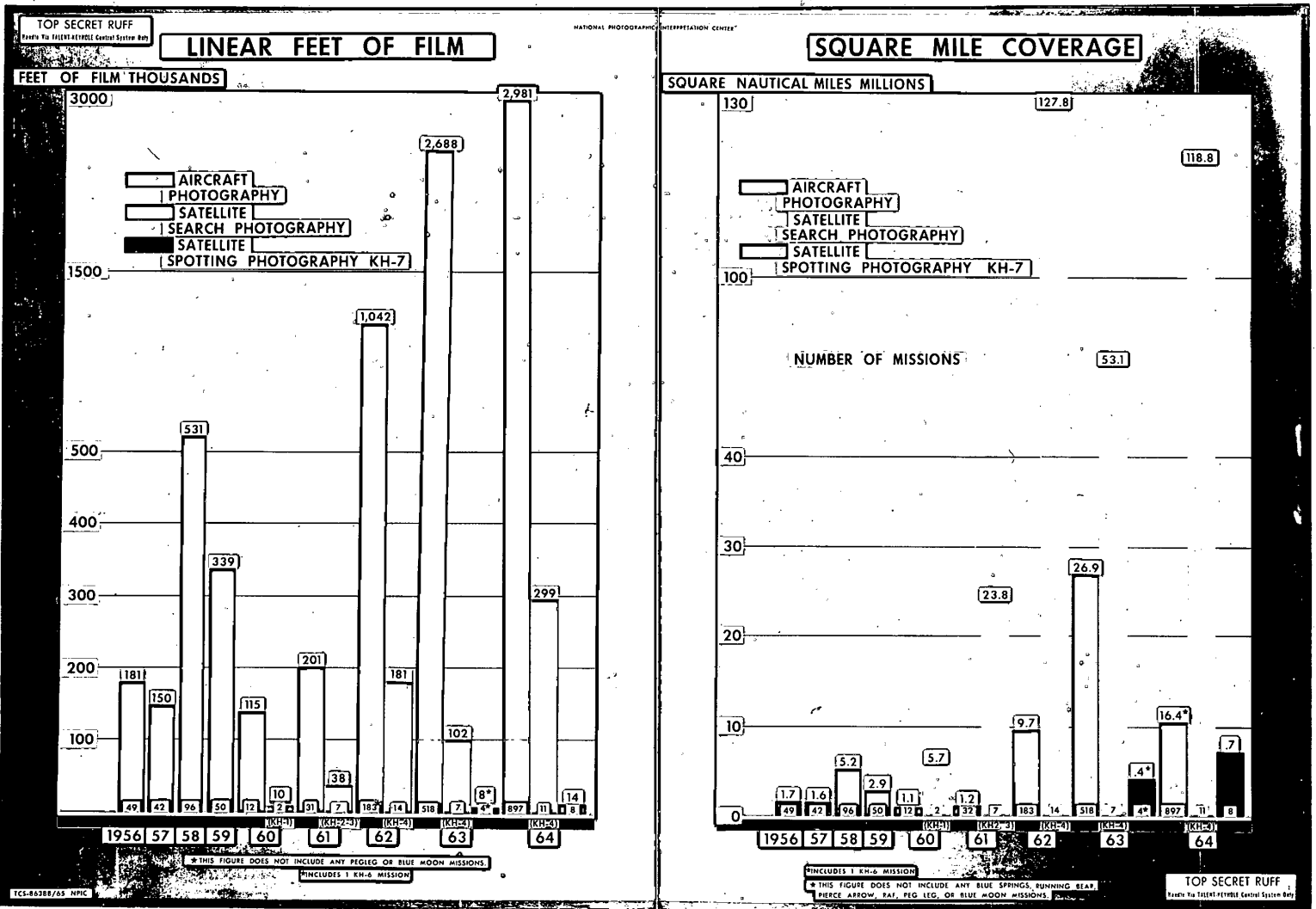
GROUND COVERAGE	12.5 MILL SNM
FOCAL LENGTH	60"
PHOTO RESOLUTION	125 L/MM
GROUND RESOLUTION	3'



TCS-86418/65 NPIC

TOP SECRET RUFF
Paper Via TALENT TELETYPE Control System 84c

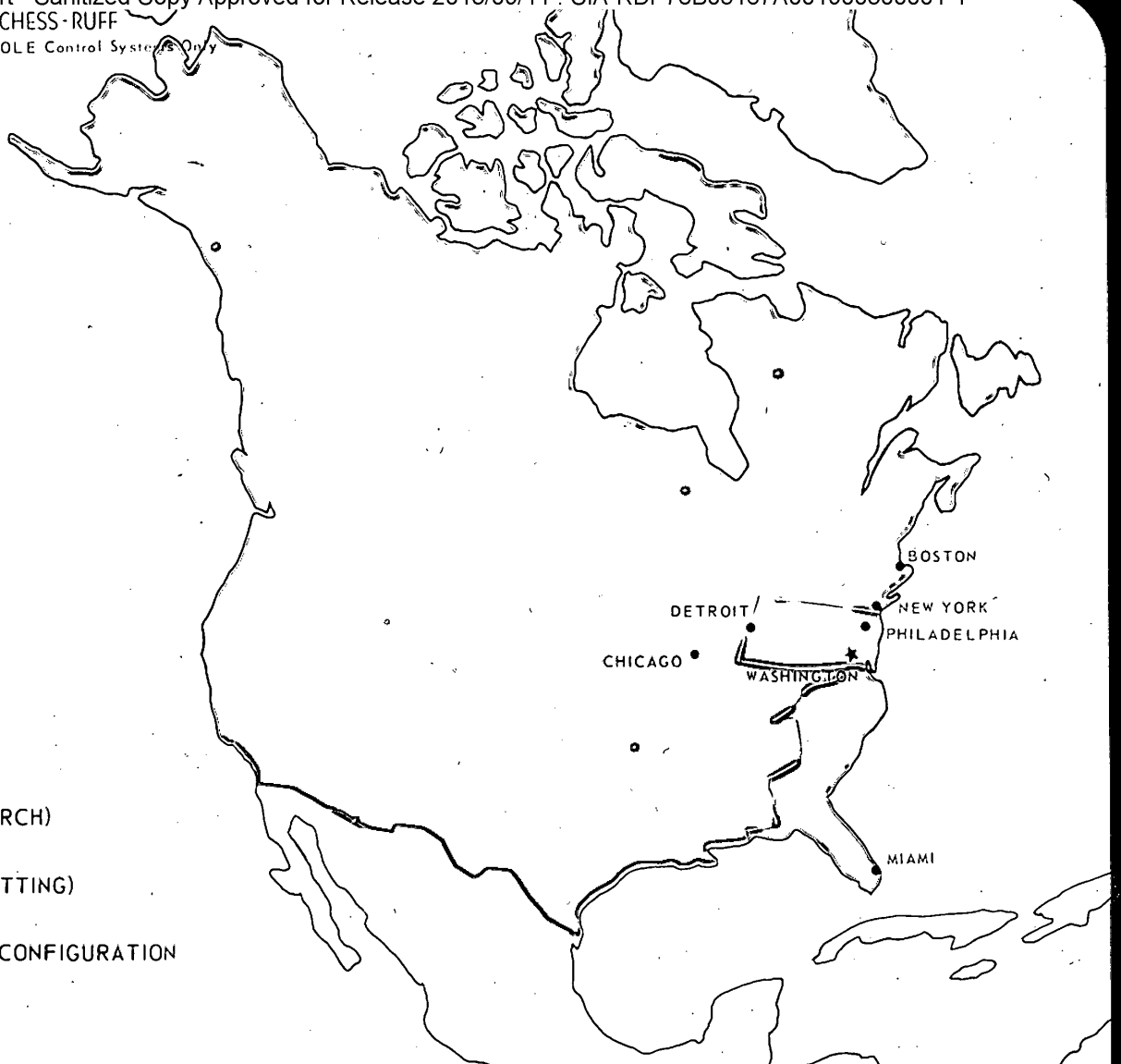
COPY 3

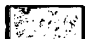



COPY 1


Declassified in Part - Sanitized Copy Approved for Release 2013/09/11 : CIA-RDP78B05167A001900300001-1
TOP SECRET - CHESS - RUFF

Handle Via TALENT-KEYHOLE Control Systems Only



 KH-4 (SEARCH)

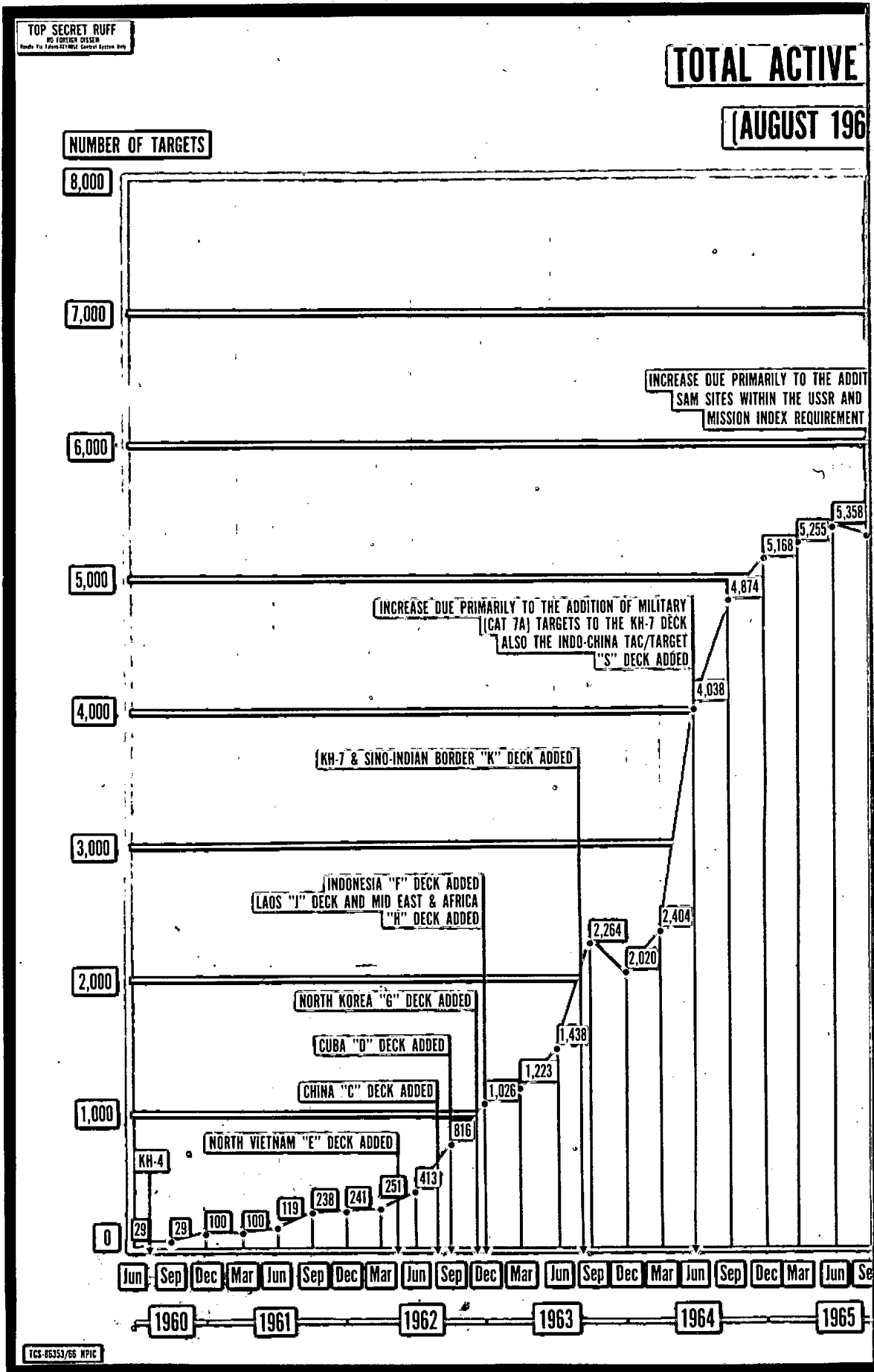
 KH-7 (SPOTTING)

 U-2, "B" CONFIGURATION

TCS-86284 65 NPIC

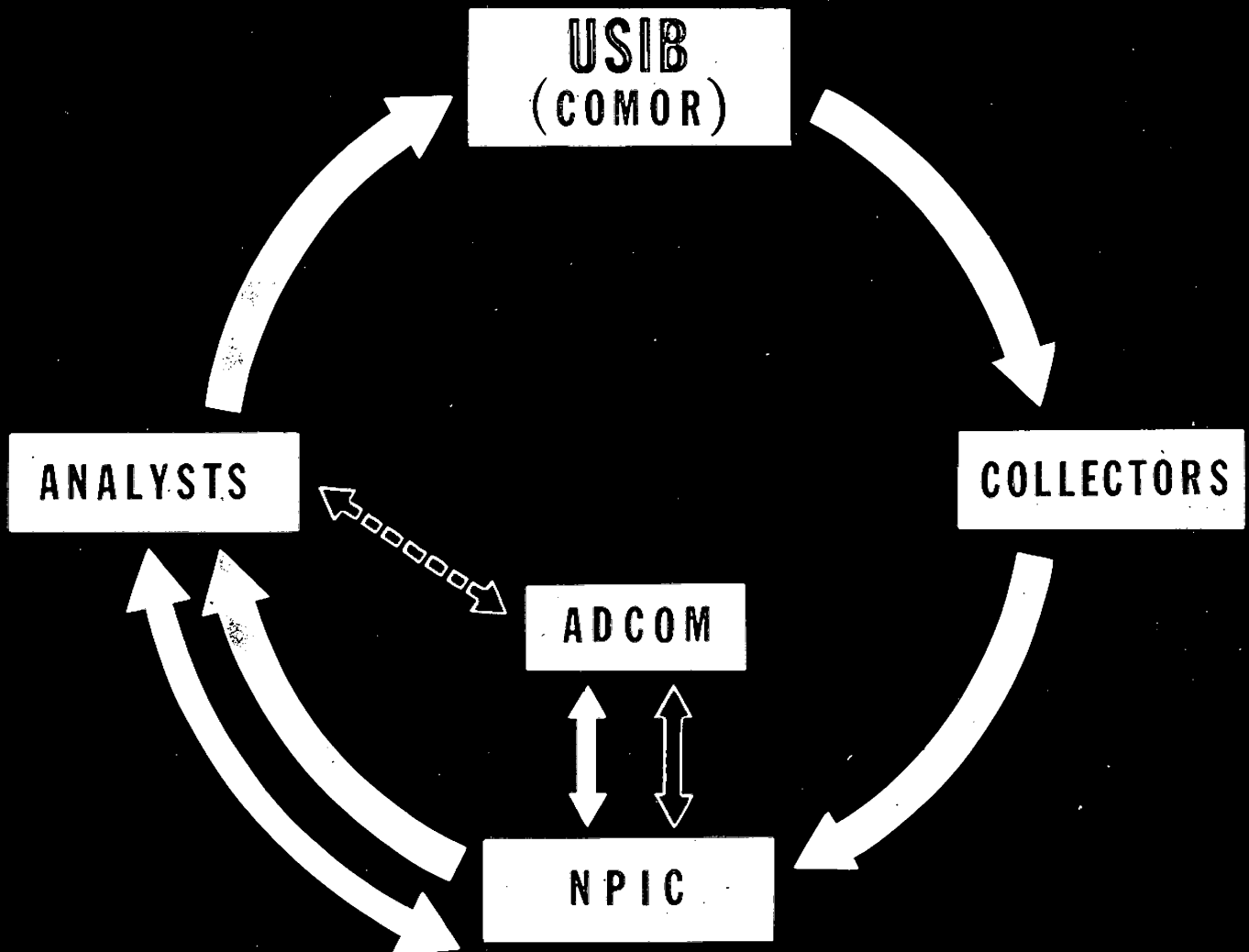
TOP SECRET - CHESS - RUFF

Handle Via TALENT-KEYHOLE Control Systems Only



COPY 2

SECRET



NPIC J-6829/65

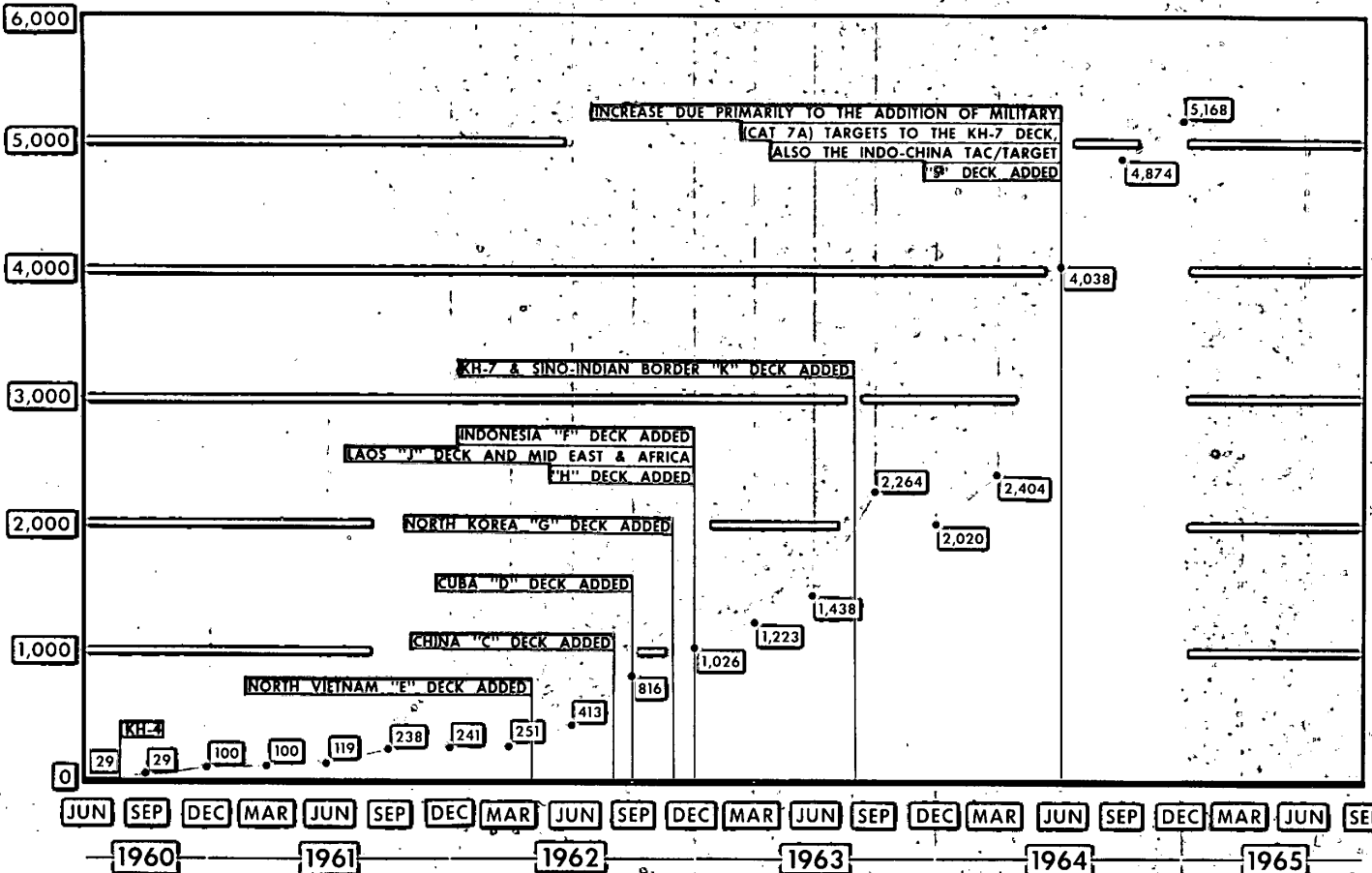
SECRET

SECRET

TOTAL ACTIVE COMOR TARGETS

(AUGUST 1960 -)

NUMBER OF TARGETS



TCS-80351/65 NPIC

SECRET
NO FOREIGN DISSEM

SECRET

NATIONAL PHOTOGRAPHIC



INTERPRETATION CENTER

ADVISORY COMMITTEE SECRETARIAT

**PROVIDES SUPPORT TO NPIC ADVISORY COMMITTEE
AND COORDINATES REQUIREMENT MATTERS WITH
COMMITTEE MEMBERS AND NPIC COMPONENTS**

- **SCREENS INCOMING PHOTOGRAPHIC INTERPRETATION REQUIREMENTS FOR CLARITY AND VALIDITY AND COORDINATE DIFFERENCES WITH REQUESTING AGENCY**
- **SCREEN INCOMING REQUIREMENTS TO ASSURE THAT REQUESTS DO NOT DUPLICATE WORK IN PROGRESS OR ACCOMPLISHED**
- **MAKE RECOMMENDATIONS TO COMMITTEE AS TO WHICH REQUIREMENTS APPEAR NATIONAL OR DEPARTMENTAL IN SCOPE**
- **MAKE RECOMMENDATIONS TO COMMITTEE AS TO WORK ORDER PRECEDENCE TO BE ASSIGNED REQUIREMENTS AGREED UPON AS BEING NATIONAL IN SCOPE**

NPIC K-2532 (11/65)

SECRET

SECRET

NATIONAL PHOTOGRAPHIC



INTERPRETATION CENTER

ADVISORY COMMITTEE (ADCOM)

ESTABLISHED IN 1961 BY JOINT AGREEMENT OF
REPRESENTATIVES OF THE USIB MEMBER AGENCIES TO

- ADVISE D/NPIC ON DEVELOPMENT OF THE CENTER IN KEEPING WITH THE NEEDS OF USIB MEMBER ORGANIZATIONS
- ADVISE D/NPIC ON OPERATIONAL CONCEPTS AND POLICIES OF THE CENTER
- REVIEW PI WORK REQUESTS IN ORDER TO
 - ASCERTAIN NATIONAL OR DEPARTMENTAL RESPONSIBILITIES
 - ASCERTAIN RELATIVE SIGNIFICANCE AND URGENCY OF NATIONAL WORK REQUESTS
 - ESTABLISH NATIONAL WORK ORDER PRIORITIES
- ADVISE D/NPIC ON WORK PRECEDENCE IN INTEGRATION OF NEW WORK

NPIC R-2528 (11/65)

SECRET

SECRET



COMPOSITION OF ADVISORY COMMITTEE

- COMMITTEE CONSISTS OF REPRESENTATIVES FROM
 - ARMY
 - NAVY
 - AIR FORCE
 - CIA
 - DIA
 - STATE
 - NSA
- CHAIRMANSHIP ROTATES QUARTERLY BETWEEN
 - ARMY
 - NAVY
 - AIR FORCE
 - CIA
 - DIA
- SECRETARIAT CONSISTS OF REPRESENTATIVES FROM
 - ARMY
 - NSA
 - CIA
 - DIA (REP AF NAVY)
- CHAIRMANSHIP INTELL PROD OFF/PAG/NPIC (PERMANENT)

NPIC R-2533 (11/65)

SECRET

SECRET

NPIC ADVISORY COMMITTEE

22 MAY 1964

**PRIORITY GUIDE
FOR NPIC SUPPORT OF PI REQUIREMENTS**

Weight	Subject Matter	Weight	Due Date	Significance of Photo Contribution	Disseminated Information
0	Developments designated as CRITICAL by competent authority	0	ASAP	Only Source	None
.5	Major developments in Bloc military capabilities, with particular reference to Soviet nuclear delivery capabilities (new ICBM, IREM, MREM complexes), Soviet development of new or significantly improved offensive or defensive weapons systems (AEM activities, new developments at R&D test ranges, newly configured ICBM, IREM, MREM sites, new LR Aircraft, GM Submarines, nuclear weapons testing), and Chinese development of nuclear weapons and related delivery systems. Electronic and communication facilities associated with or related to these high priority targets. Critically important economic and scientific and technical developments in Communist countries (the USSR, Poland, E. Germany, Czech., Hungary, Rumania, Bulgaria, Yugoslavia, Albania, Outer Mongolia, Communist China, N. Korea, N. Vietnam, and Cuba).	1	15 days	Major Source	Preliminary (Cable, OAK, IPIR, MCI)
1	Facilities in support of Soviet, Chinese Communist, and Cuban military capabilities: Operational area stockpiles, air defense (including SAMs, EW, etc.); additional ICBM, IREM, MREM sites of known configuration at known complexes; tactical mission sites, EW/CW; priority Soviet atomic energy activities; and related electronic and communication facilities.	2	16-30 days	Contributing Source	Detailed Report (not current)
1.5	Non-Block nuclear energy R&D, production of nuclear materials, and use of such materials for weapons and other purposes; non-Block development of guided missiles and other advanced weapons systems to include related electronics.	3	31-60 days	Minor Source	Detailed Report (current)
2	Non-Sov Bloc requirements, Sov-Bloc requirements other than those in above categories.	4	61 days or more	(Not applicable)	(Not applicable)

WEIGHTS 0-4 = Priority 1

WEIGHTS 5-8 = Priority 2

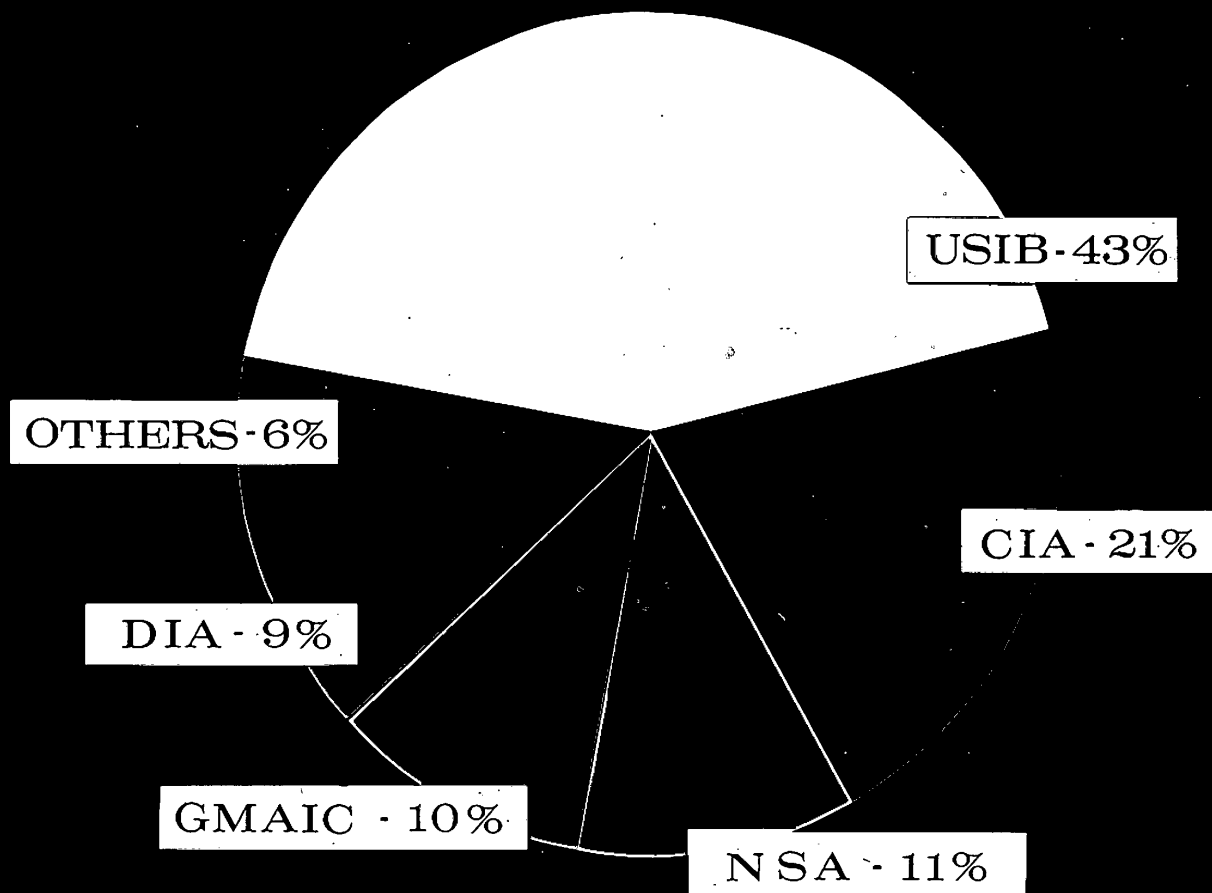
WEIGHTS 9-12 = Priority 3

SECRET

GROUP 1
Excluded from automatic
downgrading and
declassification

SECRET

REQUESTERS of NATIONAL P. I. REQUIREMENTS



NPIC J 6830 '65

SECRET

SECRET

ACCELERATED EXPLOITATION PROGRAM

NATIONAL PHOTOGRAPHIC INTERPRETATION CENTER

A

first phase reporting

- 1- CABLE REPORT
- 2- HARD COPY REPORT (IPIR)
- 3- BRIEFING BOARDS

B

second phase reporting

- 1- MISSION INDEX (MI)
- 2- SUMMARY REPORT - NEW & SIGNIFICANT CHANGE TARGETS (MS)
- 3- SUMMARY REPORT - ORDER OF BATTLE INFORMATION (MS)
- 4- PHOTOGRAPHIC INTERPRETATION BRIEFS (PIB)

C

third phase reporting

- 1- STANDING REQUIREMENTS
- 2- SPECIFIC REQUIREMENTS
- 3- US INTELLIGENCE BOARD (USIB) & USIB SUB-COMMITTEE REQUIREMENTS

ACTUALITY

EXPLOITATION

SECRET

SECRET

THE PI PRODUCTION PROCESS

PRE-MISSION ACTIVITIES

- SUPPORT TO MISSION PLANNING
- PREPARATION OF COLLATERAL MATERIALS
- PRE-MISSION BRIEFINGS
- SCHEDULING OF INPUT
- STAFFING OF PI TEAM & SUPPORT ELEMENTS

FIRST PHASE REPORTING

- FILM EDIT AT PROCESSING SITE
- RECEIPT OF EPHEMERIS DATA
- ARRIVAL OF FILM
- SCAN FILM FOR HIGH PRIORITY COMOR & BONUS TARGETS
- SELECTION OF BRIEFING BOARDS
- CABLES SENT TO ENTIRE COMMUNITY
- PUBLICATION OF HARD COPY REPORT
 - MENSURATION - GRAPHICS - PHOTO LAB - EDIT
 - REPRODUCTION - DISTRIBUTION

SECOND PHASE REPORTING

- PREPARATION OF MISSION COVERAGE PLOTS
- UPDATE OF TARGET BRIEFS
- SCAN FILM
- PUBLICATION OF HARD COPY REPORT
- CABLES TO COMMUNITY ON SIGNIFICANT FINDS

DETAILED REPORTING

- REQUIREMENTS RECEIVED FROM INTELLIGENCE COMMUNITY
- NPIC ADVISORY COMMITTEE ACCEPTS & PRIORITIZES
- PROJECT CHAIRMAN SELECTED & TEAM ASSIGNED
- PHOTOGRAPHIC RESOURCES SEARCHED
- SUPPORT REQUESTS LEVIED
 - MENSURATION - PHOTO LAB - GRAPHICS - COLLATERAL
- COMPREHENSIVE ANALYSIS OF FILM
- HARD COPY REPORT PREPARED
- FINAL REVIEW
 - SUBSTANCE - ACCURACY - SECURITY CONTROLS
- PRINTING & DISTRIBUTION

QUICK REACTION REPORTING

NPIC 1-2715 (7/65)

SECRET

SECRET

P.I. PRODUCTION PROCESS

FIRST PHASE REPORTING

- 1A. "IMMEDIATE" RESPONSE TO HIGHEST PRIORITY COMOR OBJECTIVES**
- 1B. REPORTING REMAINDER OF PRIORITY COMOR OBJECTIVES**
- 1C. MISSION SCAN AND PUBLICATION OF MISSION INDEX**

SECOND PHASE REPORTING

- 2A. BASIC WRITE-UPS OF NEW TARGETS**
- 2B. SIGNIFICANT CHANGES TO KNOWN INSTALLATIONS**
- 2C. ORDER OF BATTLE INFORMATION**

THIRD PHASE REPORTING

- 3A. REPORTING IN DETAIL ON STANDING REQUIREMENTS**
- 3B. SPECIAL SEARCHES AND RESPONSES**
- 3C. SPECIAL DETAILED REPORTS**

SECRET

SECRET

TEAM EFFORT

PHOTOGRAPHY AND
REQUIREMENTS

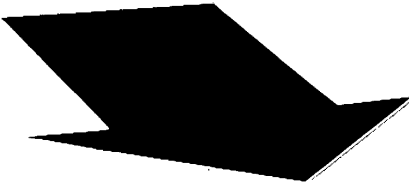
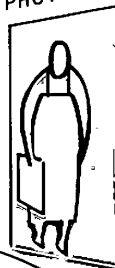


PHOTO LAB.



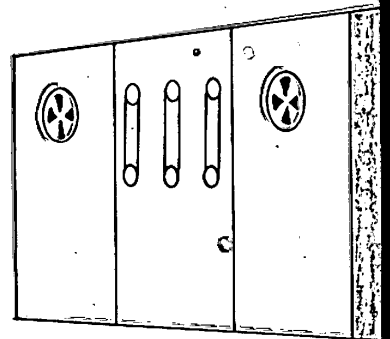
COLLATERAL
SUPPORT.

PHOTO
INTERPRETER

MENSURATION
DATA

EDITOR

GRAPHIC ANALYST



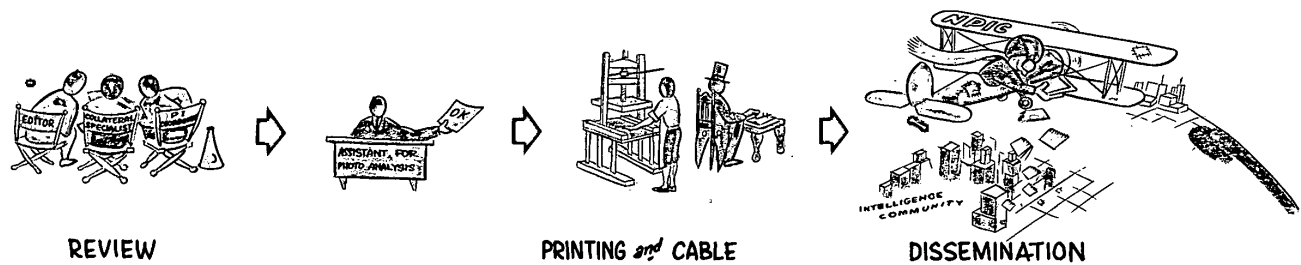
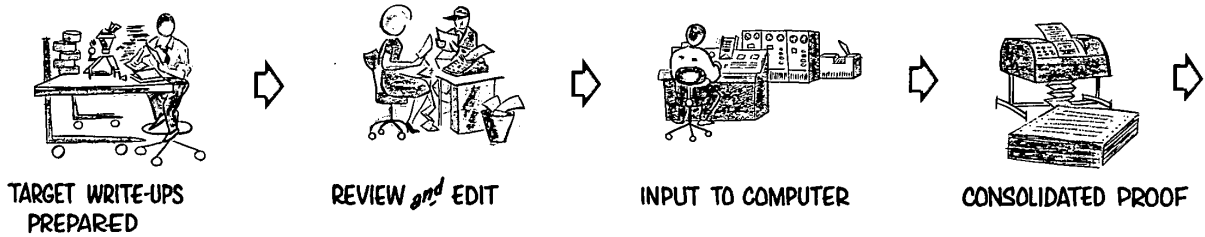
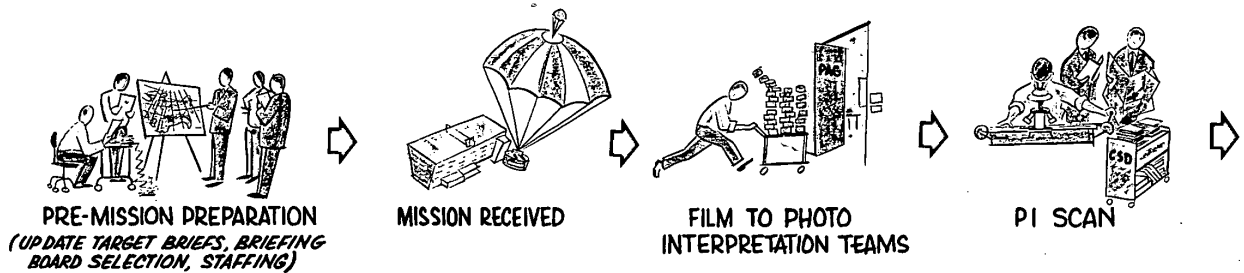
MACHINE COMPILATION
AND TARGET DATA

PHOTOGRAPHIC
INTELLIGENCE
PRODUCTS



SECRET

PRODUCTION of NPIC IMMEDIATE REPORTS



TOP SECRET BINAR CHESS RUFF ZART
NO FOREIGN DISSEM
Handle Via COMINT TALENT ETHNOST
Central Systems Section

OAK/MCI TARGET PACKETS

CONFIDENTIAL
ONC 166

LEGEND

31 (b)

OK

57

55

53

51

49

47

45

43

41

39

37

35

33

31

29

27

25

23

21

19

17

15

13

11

9

7

5

3

1

OK

57

55

53

51

49

47

45

43

41

39

37

35

33

31

29

27

25

23

21

19

17

15

13

11

9

7

5

3

1

OK

57

55

53

51

49

47

45

43

41

39

37

35

33

31

29

27

25

23

21

19

17

15

13

11

9

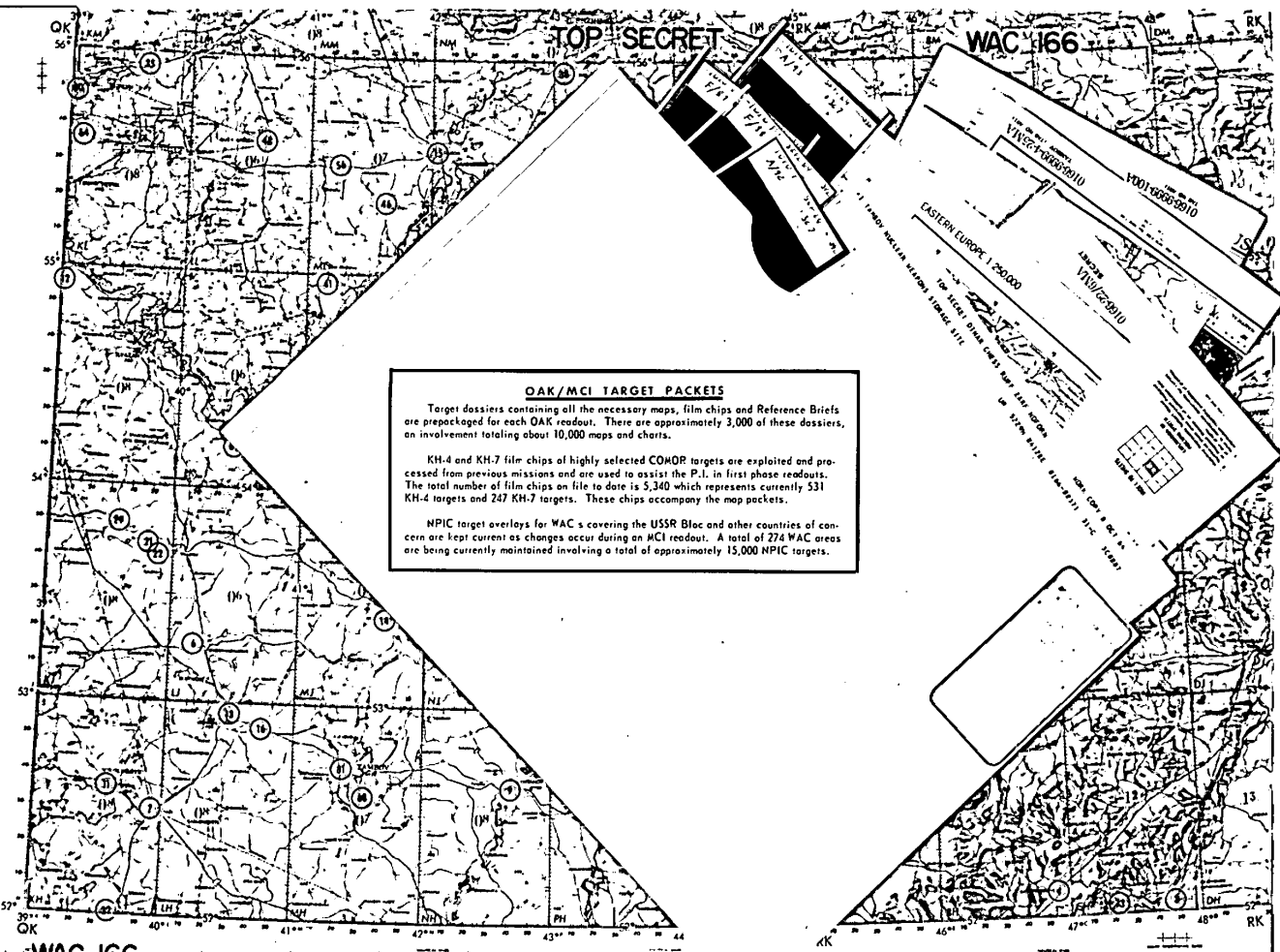
7

5

3

1

OK



OAK/MCI TARGET PACKETS

Target dossiers containing all the necessary maps, film chips and Reference Briefs are prepackaged for each OAK readout. There are approximately 3,000 of these dossiers, an involvement totaling about 10,000 maps and charts.

KH-4 and KH-7 film chips of highly selected COMOR targets are exploited and processed from previous missions and are used to assist the P.I. in first phase readouts. The total number of film chips on file to date is 5,340 which represents currently 531 KH-4 targets and 247 KH-7 targets. These chips accompany the map packets.

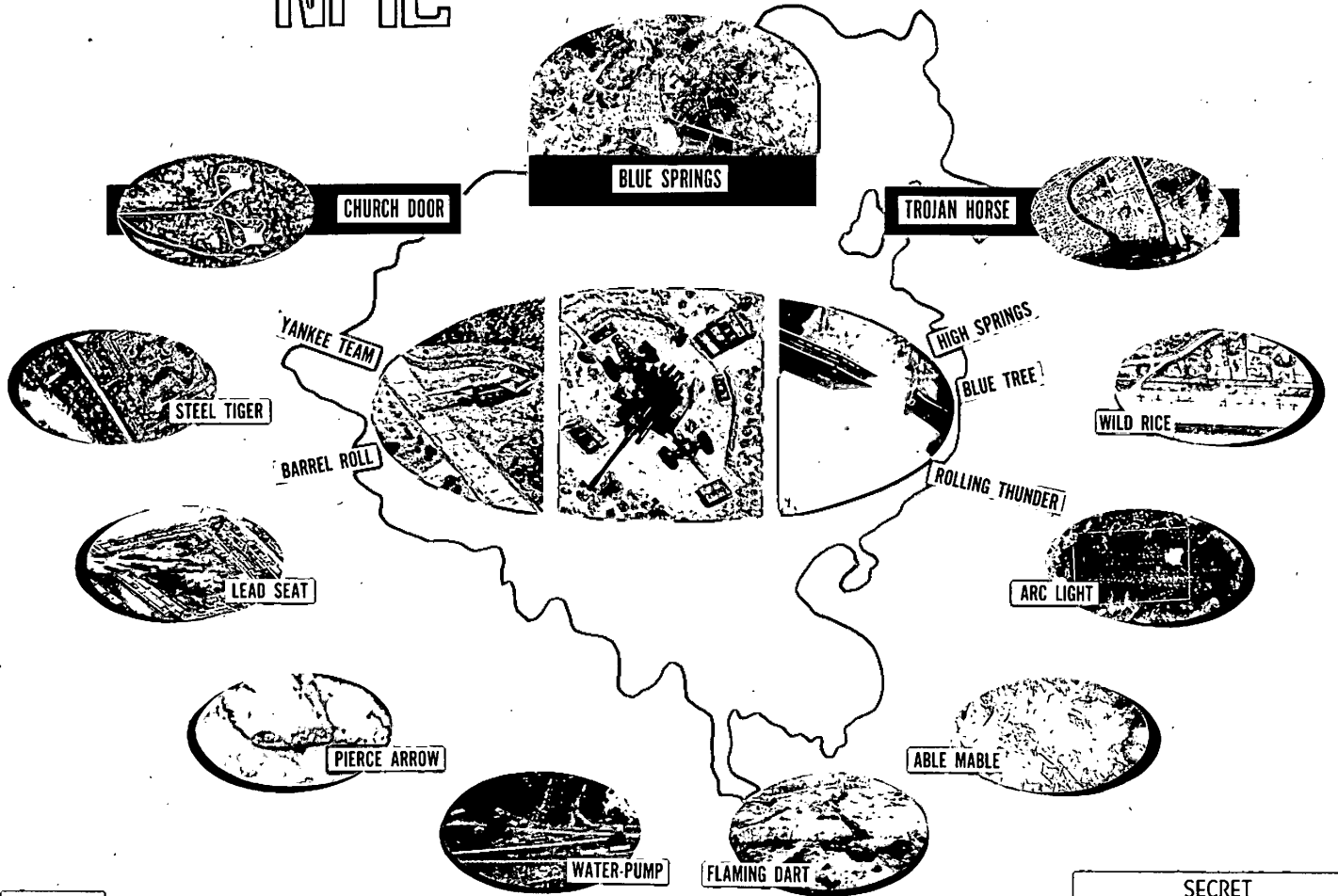
NPIC target overlays for WAC's covering the USSR Bloc and other countries of concern are kept current as changes occur during an MCI readout. A total of 274 WAC areas are being currently maintained involving a total of approximately 15,000 NPIC targets.

SECRET



SOUTH-EAST ASIA EXPLOITATION PROGRAMS

50X1



50X1

NPIC X-2331 (8/65)

SECRET

SECRET

NATIONAL PHOTOGRAPHIC INTERPRETATION CENTER



50X1

NPIC EXPLOITATION REQUIREMENTS

<p>CHURCH DOOR MISSIONS RECEIVED</p> <p>IPIR/MCI (MI) REPORTING 34 MCI REPORTING ONLY 28</p>		<p>IPIR</p> <ul style="list-style-type: none"> CABLE REPORT HARDCOPY REPORT <p>MISSION INDEX</p> <ul style="list-style-type: none"> TGT SUMMARY OB SUMMARY REPORTS 	<p>FIELD CABLE REVIEW</p> <ul style="list-style-type: none"> REPORT ADDITIONAL INFORMATION <p>DETAILED REPORTING</p> <ul style="list-style-type: none"> AS REQUIRED <p>PIB</p>
<p>BLUE SPRINGS MISSIONS FOR MCI ONLY 29</p>		<p>FIELD CABLE REVIEW</p> <p>BRIEFING BOARDS</p>	<p>MISSION INDEX</p> <ul style="list-style-type: none"> TARGET SUMMARY OB SUMMARY REPORTS <p>PIB</p>
<p>TROJAN HORSE MISSIONS EXPLOITED 406</p>		<ul style="list-style-type: none"> FIELD CABLE REVIEW BRIEFING BOARDS SPECIAL SUMMARY REPORT AIR/NAVAL OB SUMMARY AAA SURVEY - N.VIETNAM/LAOS 	<ul style="list-style-type: none"> SAM DEPLOYMENT SEARCH ARC LIGHT INTELLIGENCE PRESS RELEASE BOARDS SPECIAL STUDIES
<p>GOLDEN TREE MISSIONS EXPLOITED 239</p> <p>BRASS KNOB MISSIONS EXPLOITED 647</p>		<p>IPIR</p> <ul style="list-style-type: none"> CABLE REPORT HARD COPY REPORT BRIEFING BOARDS <p>PIB</p>	<p>DETAILED REPORTING</p> <ul style="list-style-type: none"> AS REQUIRED <p>MILITARY ACTIVITY SUMMARY</p>

NPIC R.7352 (8/65)

SECRET

50X1

SECRET

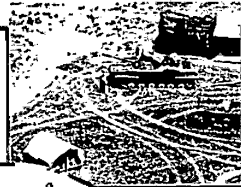


50X1

NPIC EXPLOITATION REQUIREMENTS

YANKEE TEAM

▶ MISSIONS EXPLOITED 905



▶ FIELD CABLE REVIEW

▶ AAA SURVEY

▶ BRIEFING BOARDS

▶ SPECIAL STUDIES

▶ SUMMARY REPORT

BARREL ROLL

▶ MISSIONS EXPLOITED 128



▶ FIELD CABLE REVIEW

▶ NPIC DATA BASE

▶ BRIEFING BOARDS

▶ SPECIAL STUDIES

50X1

NPIC 4-2330 (2/65)

SECRET

SECRET

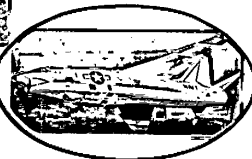
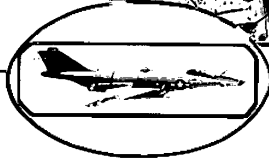
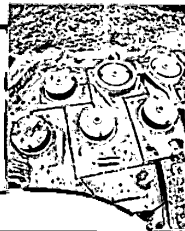


50X1

NPIC EXPLOITATION REQUIREMENTS

BLUE TREE

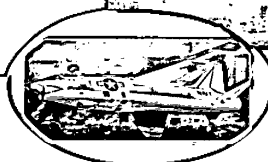
MISSIONS EXPLOITED 334



- FIELD CABLE REVIEW
- NPIC DATA BASE
- BRIEFING BOARDS
- SPECIAL STUDIES
- PRESS RELEASE BOARDS

ROLLING THUNDER

MISSIONS EXPLOITED 606



- FIELD CABLE REVIEW
- NPIC DATA BASE
- BRIEFING BOARDS
- SPECIAL STUDIES
- PRESS RELEASE BOARDS

50X1

NPIC X-2334 (8/65)

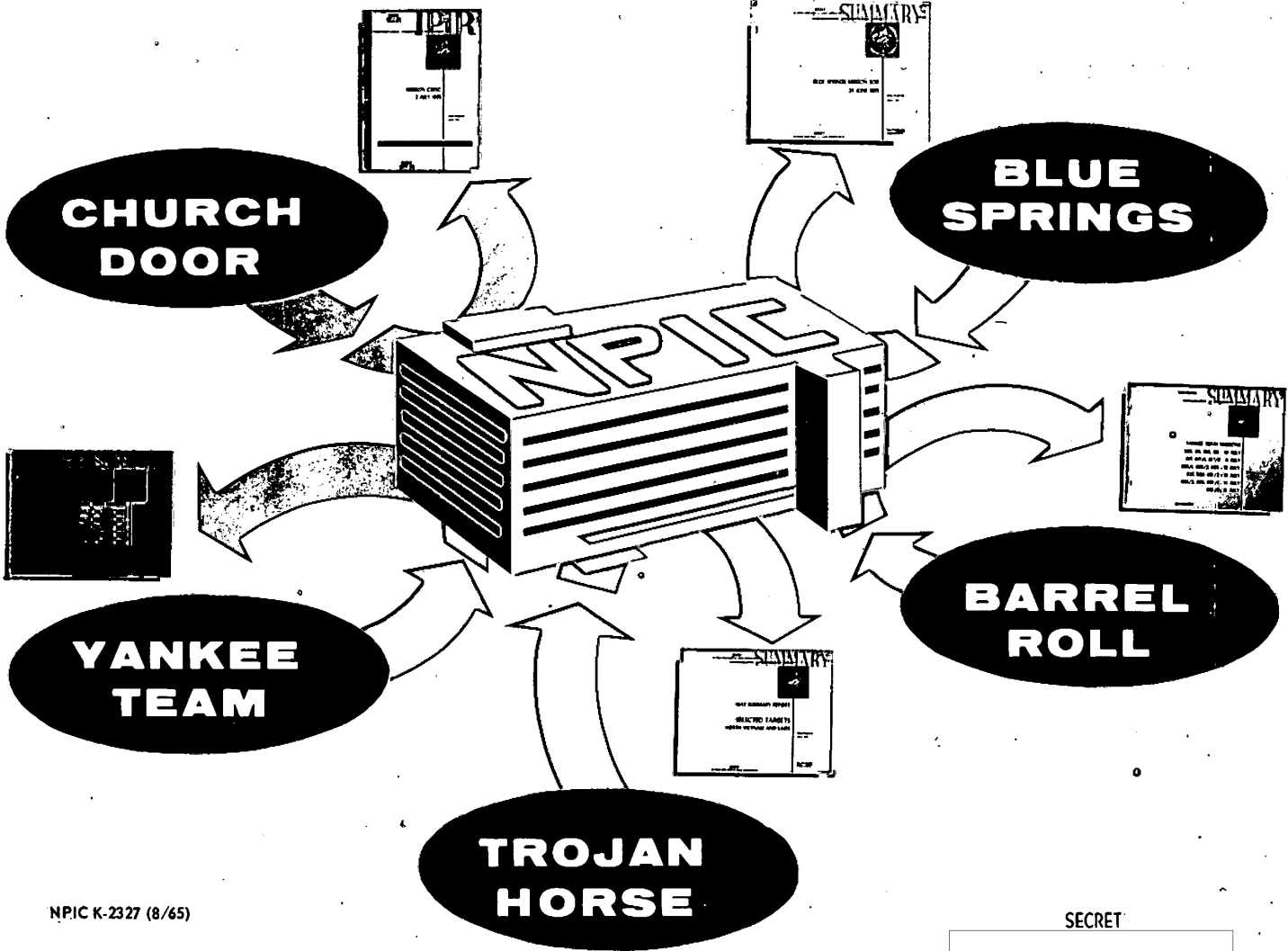
SECRET

SECRET

NATIONAL PHOTOGRAPHIC INTERPRETATION CENTER



50X1



NPIC K-2327 (8/65)

SECRET

50X1

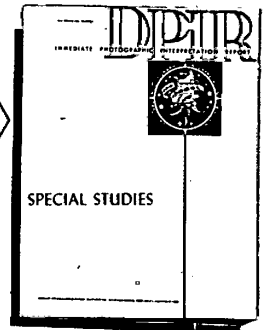
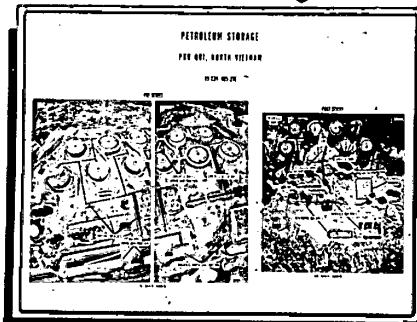
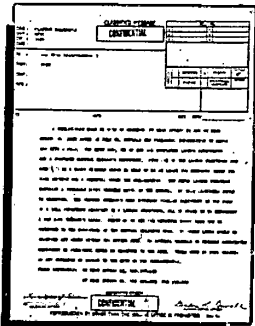
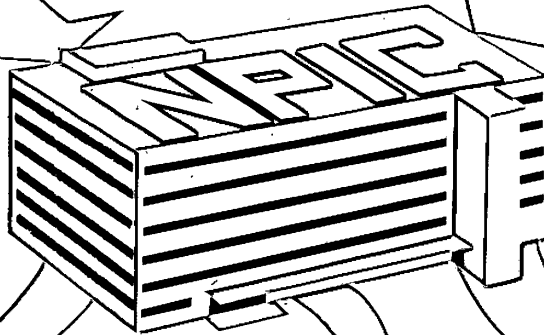
SECRET

NATIONAL PHOTOGRAPHIC INTERPRETATION CENTER



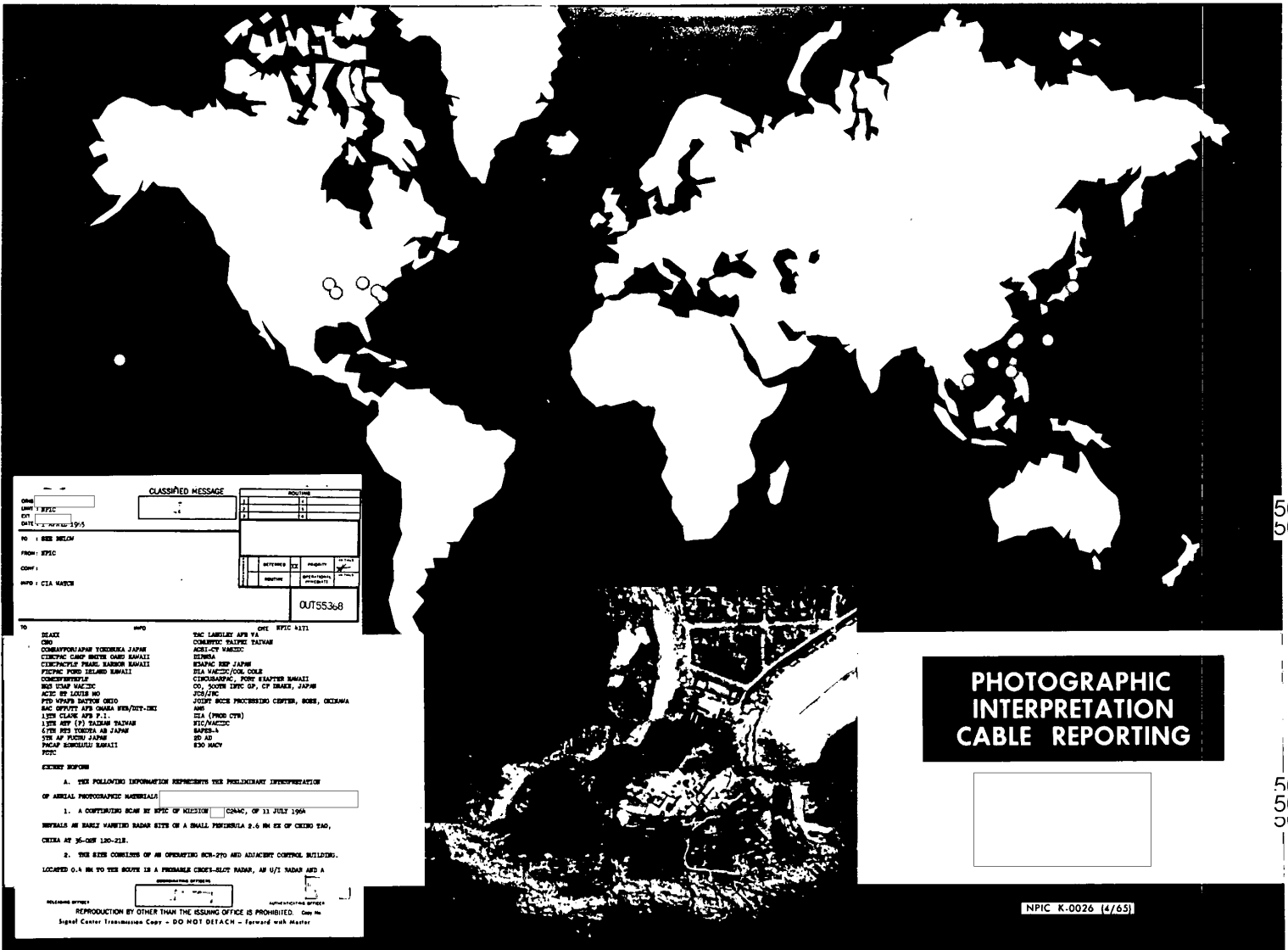
BLUE TREE

ROLLING THUNDER



NPIC K-2333 (8/65)

SECRET



50X1
50X1

50X1
50X1
50X1

CLASSIFIED MESSAGE		ROUTINE	
CLASS	CLASS	CLASS	CLASS
DATE	DATE	DATE	DATE
NO	NO	NO	NO
FROM	FROM	FROM	FROM
INFO	INFO	INFO	INFO

OUT55368

- TO: SAC, TOKYO
- FROM: SAC, OSAKA
- INFO: SAC, SINGAPORE
- TO: SAC, TOKYO
- FROM: SAC, OSAKA
- INFO: SAC, SINGAPORE

PHOTOGRAPHIC INTERPRETATION CABLE REPORTING

1. A CONTAINER BEING BY SPEC OF DESIGN [] ON 11 JULY 1964, INITIALS BE EARLY HANDED NAGASAKI SITE OF A SMALL PERIMETER 2.6 KM BY 2.6 KM OF OSAKA YARD, CHINA AT 90-05F 130-21R.

2. THE SITE CONSISTS OF AN OPERATING ROOM-270 AND ADJACENT CONTROL BUILDING. LOCATED 0.4 KM TO THE SOUTH IS A PROBABLE CHECK-SLOT ROAD, AN 1/2 ROAD AND A []

REPRODUCTION BY OTHER THAN THE ISSUING OFFICE IS PROHIBITED. Copy No. []

NPIC K-0026 (4/65)

NO FOREIGN DISSEM

AERIAL PHOTOGRAPHY

MISSION TYPE	AREA COVERED	PROCESSING SITE	READOUT SITE
Golden Tree	Cuba	Barksdale AFB, Louisiana NRTSC Suitland, Md.	NPIC NPIC
Church Door	China China China, North Korea	CNAF Taiwan Yokota Eastman, Westover	67th RTS Yokota 67th RTS Yokota NPIC
Trojan Horse	North Vietnam, South Vietnam, Laos	Tan Son Nhut AB (AF)	2 AIR DIV
Yankee Team	Laos	Tan Son Nhut AB (AF) Udorn AB (AF)	13th RTS 15th RTF
Yankee Team	Laos	CINCPACFLT (N)	CINCPACFLT (CVAS)
Blue Tree	North Vietnam	Tan Son Nhut (AF) Udorn (AF) CINCPACFLT (N)	13th RTS 15th RTF CINCPACFLT
Rolling Thunder	North Vietnam	Tan Son Nhut AB (AF) Udorn (AF)	13th RTS 15th RTF
Barrel Roll	Laos	Tan Son Nhut AB (AF) CINCPACFLT (N)	13th RTS CINCPACFLT
Steel Tiger	North Vietnam Laos	Tan Son Nhut AB (AF) CINCPACFLT (N)	13th RTS CINCPACFLT
Market Time	South Vietnam	Tan Son Nhut AB (AF)	13th RTS
Water Pump	Laos	Tan Son Nhut AB (AF)	13th RTS
Blue Spring (Drone)	North Vietnam, China	Tan Son Nhut AB (AF)	13th RTS

50X1

50X1

NPIC K-0860 (7/65)

SECRET

NO FOREIGN DISSEM