

~~CONFIDENTIAL~~

NATIONAL PHOTOGRAPHIC



INTERPRETATION CENTER

~~CONFIDENTIAL~~

**aerial
photography**

**all-source
intelligence**

**ground
photography**



DCI

PRODUCT

DOD

INTELLIGENCE COMMUNITY

SECRET



NATIONAL PHOTOGRAPHIC
INTERPRETATION CENTER

HISTORICAL DEVELOPMENT

RELOCATION IN STEUART BUILDING
START OF JOINT P. I. WORK

1956

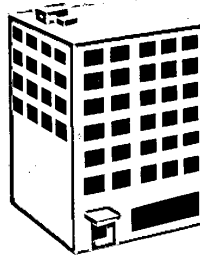
1954

1953

BEGINNING OF
HIGH ALTITUDE
RECONNAISSANCE

P. I. DIVISION
IN C.I.A.

TEMPO BLDGS.



STEUART BLDG.
50,000 SQ. FT.

1958

DESIGNATED C.I.A.
PHOTO INTELLIGENCE
CENTER UNDER
OFFICE OF D.D.I.

1961

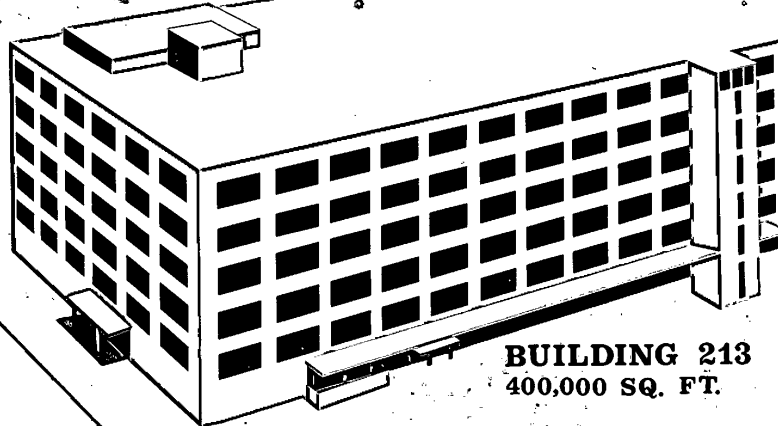
NSCID-8

1960

KIRKPATRICK
REPORT

1963

MOVED TO
BUILDING 213



BUILDING 213
400,000 SQ. FT.

SECRET

TOP SECRET-CHES - RUFF

HIGHLIGHTS IN HISTORY OF NPIC

- PRE U-2 YEARS 1952-1956
- DEVELOPMENT OF THE U-2 1955-1956
- PROJECT HTAUTOMAT 1956-1958
- PHOTOGRAPHIC INTELLIGENCE CENTER ESTABLISHED OCT 1958
- THE U-2 SHOOTDOWN MAY 1960
- FIRST SUCCESSFUL KH MISSION AUG 1960
- THE KIRKPATRICK REPORT DEC 1960
- NPIC ESTABLISHED JAN 1961
- CUBAN MISSILE CRISIS OCT 1962
- MOVE TO BLDG 213 JAN 1963
- FIRST SUCCESSFUL KH-7 MISSION JULY 1963
- DOUBLE BUCKET PROGRAM STARTED AUG 1963
- WORLD CRISIS SITUATIONS
 - SUEZ (1956), INDONESIA (1958), LEBANON (1958), FORMOSA STRAITS (1958)
 - TIBET (1959-1960), LAOS/VIETNAM (1959-1965), CHINA/INDIA (1962-1963),
 - BRITISH GUIANA/VENEZUELA (1963), CYPRUS (1964), CONGO (1964)

TOP SECRET-CHES - RUFF

50X1

SECRET



NSCID 8 CREATED NPIC

PROVISIONS

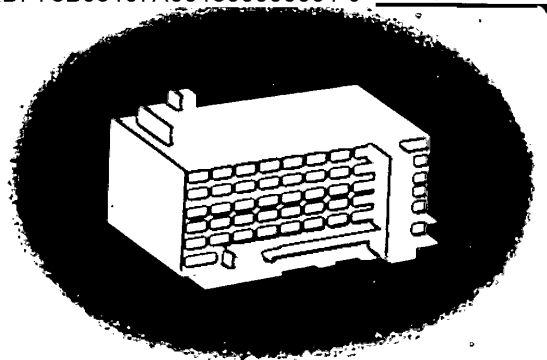
- ◆ DCI TO PROVIDE NATIONAL CENTER
- ◆ DIRECTOR DESIGNATED BY DCI, APPROVED BY SECRETARY OF DEFENSE
- ◇ PERSONNEL AND OTHER SUPPORT JOINTLY PROVIDED
- ◇ PERSONNEL UNDER FUNCTIONAL CONTROL OF DIRECTOR, NPIC
UNDER ADMINISTRATIVE CONTROL OF PARENT ORGANIZATION
- ◇ DEPARTMENTAL PI RESPONSIBILITIES TO CONTINUE
- ◇ ADMINISTRATION OF NPIC TO PASS TO SECRETARY OF DEFENSE IN TIME OF WAR

RESPONSIBILITIES

- ◆ PRODUCE AND DISSEMINATE IMMEDIATE AND DETAILED
PHOTO INTERPRETATION REPORTS USING ALL COLLATERAL SOURCES
- ◆ SUPPORT DEPARTMENTAL NEEDS AS CAN BE PROVIDED
WITHOUT DEGRADATION OF NATIONAL ACTIVITIES
- ◆ MAINTAIN A CENTRAL PHOTO FILE
- ◆ PROVIDE OTHER MATERIALS AND SERVICES IN SUPPORT OF
THE NATIONAL INTELLIGENCE EFFORT
- ◆ DEVELOP SPECIALIZED EXPLOITATION EQUIPMENT
- ◆ CONSULT WITH USIB DEPARTMENTS, AGENCIES, AND COMMITTEES

SECRET

NSCID 8 CREATED NPIC



- PROVIDED BY DCI
- DIRECTOR DESIGNATED BY DCI, APPROVED BY SECRETARY OF DEFENSE
- PERSONNEL AND OTHER SUPPORT JOINTLY PROVIDED
- PERSONNEL UNDER FUNCTIONAL CONTROL OF DIRECTOR, NPIC UNDER ADMINISTRATIVE CONTROL OF PARENT ORGANIZATION
- DEPARTMENTAL PI RESPONSIBILITIES TO CONTINUE
- DEVELOP SPECIALIZED EXPLOITATION EQUIPMENT
- DEVELOP MECHANIZED SYSTEMS FOR RECOVERY, SELECTION, COLLATION OF DATA
- MAINTAIN A CENTRAL PHOTO FILE
- CONSULT WITH USIB DEPARTMENTS, AGENCIES, AND COMMITTEES
- DOES NOT PRODUCE FINISHED INTELLIGENCE
- PRODUCE AND DISSEMINATE IMMEDIATE AND DETAILED PHOTO INTERPRETATION REPORTS USING ALL COLLATERAL SOURCES

SECRET

SECRET

NPIC MISSION AND FUNCTIONS

MISSION

THE NATIONAL PHOTOGRAPHIC INTERPRETATION CENTER IS CHARGED WITH PRODUCING PHOTOGRAPHIC INTERPRETATION REPORTS, PROVIDING PHOTOGRAPHIC INTELLIGENCE SERVICES, IN SUPPORT OF THE NATIONAL INTELLIGENCE EFFORT, FURNISHING SUCH ADDITIONAL SUPPORT TO DEPARTMENTAL AND AGENCY INTERESTS AS CAN BE PROVIDED WITHOUT DEGRADATION OF NATIONAL RESPONSIBILITIES, AND PROMOTING AN INTEGRATED AND COORDINATED INTERDEPARTMENTAL EFFORT IN THE EXPLOITATION OF PHOTOGRAPHY FOR INTELLIGENCE PURPOSES.

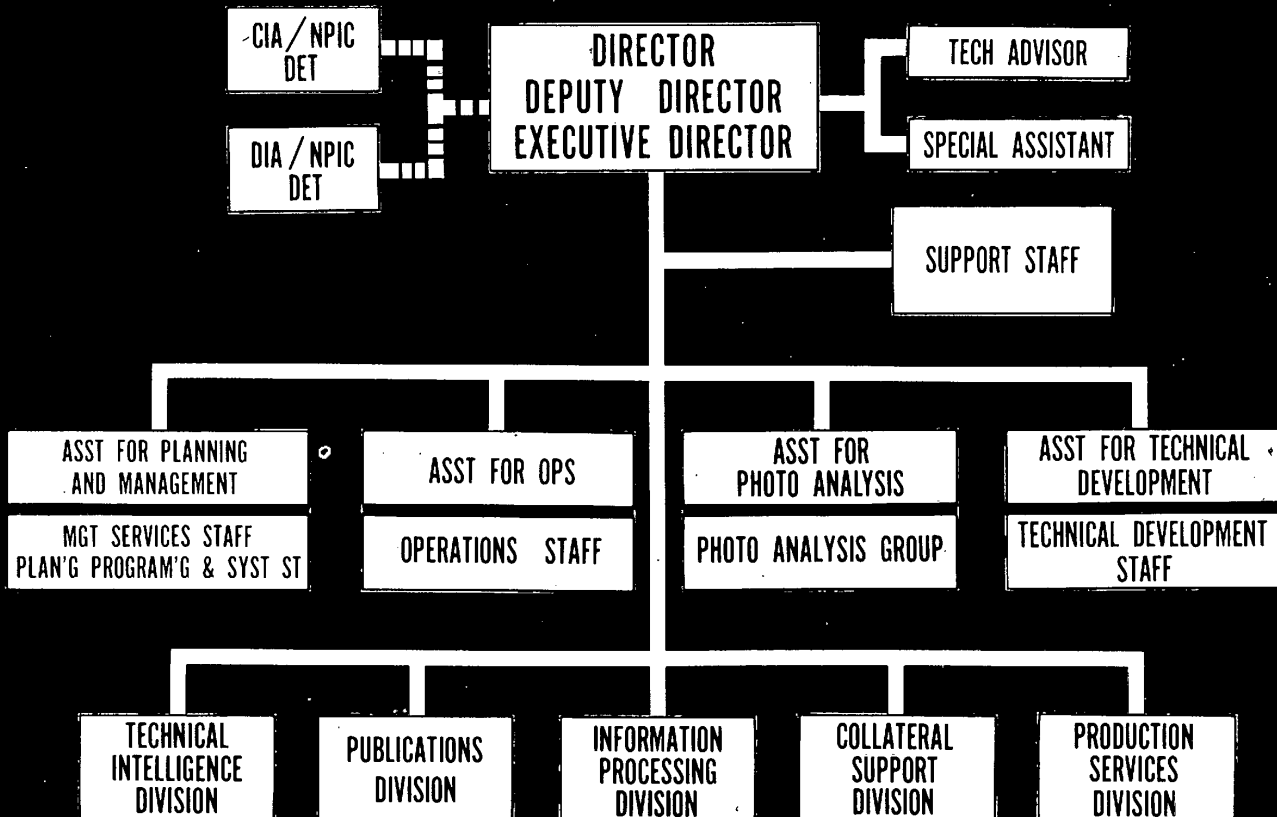
FUNCTIONS:

- 1 PRODUCE PHOTOGRAPHIC INTERPRETATION REPORTS.**
- 2 PROVIDE PHOTOGRAPHIC INTELLIGENCE SERVICES.**
- 3 MAINTAIN CENTRAL FILE OF PHOTOGRAPHIC DATA.**
- 4 ARRANGE FOR EXCHANGE OF PHOTOGRAPHS AND PHOTOGRAPHIC DATA.**
- 5 RECOMMEND CODES, INDEXES, AND MECHANIZED SYSTEMS FOR RECOVERY, SELECTION, AND COLLATION OF PHOTOGRAPHIC DATA.**
- 6 PREPARE PHOTOGRAPHIC AND PHOTOGRAMMETRIC INTELLIGENCE SUPPORT REQUIREMENTS.**
- 7 PROVIDE ANALYTIC AND TECHNICAL PHOTOGRAPHIC INTELLIGENCE SERVICES IN SUPPORT OF SPECIAL COLLECTION AND EXPLOITATION REQUIREMENTS.**
- 8 ENGAGE IN OR SPONSOR, THE DEVELOPMENT OF SPECIALIZED EQUIPMENT AND PROVIDE INFORMATION TO INTERESTED ELEMENTS OF THE INTELLIGENCE COMMUNITY.**
- 9 PROVIDE AND MAINTAIN ACCOMMODATIONS AND FACILITIES FOR NATIONAL AND DEPARTMENTAL ACTIVITIES.**
- 10 EXAMINE AND MAKE RECOMMENDATIONS AS TO ANY SPECIAL SECURITY CONTROLS.**
- 11 CONSULT WITH INDIVIDUAL DEPARTMENTS, AGENCIES, AND COMMITTEES ON PHOTOGRAPHIC INTELLIGENCE EXPLOITATION ACTIVITIES.**

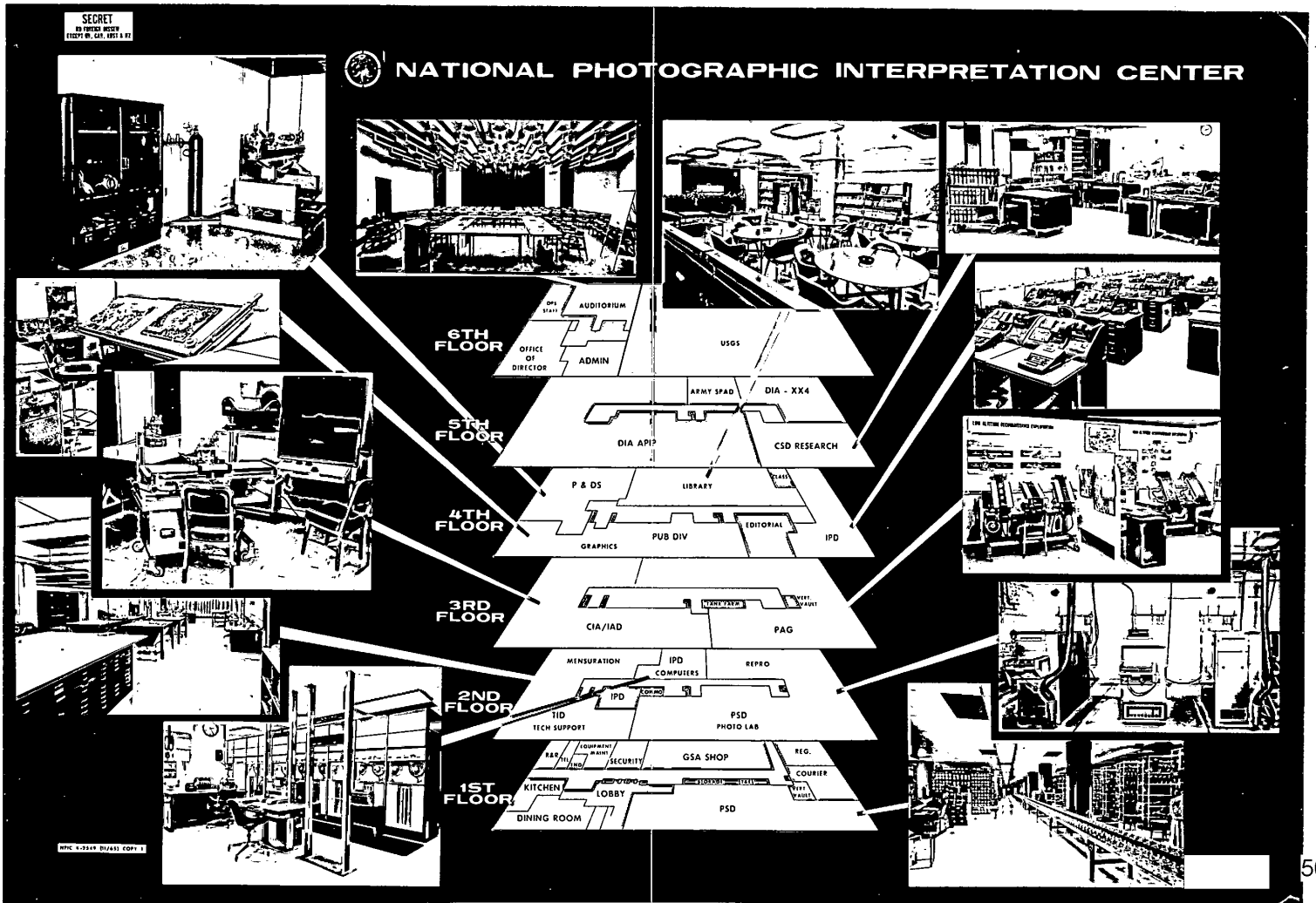
SECRET



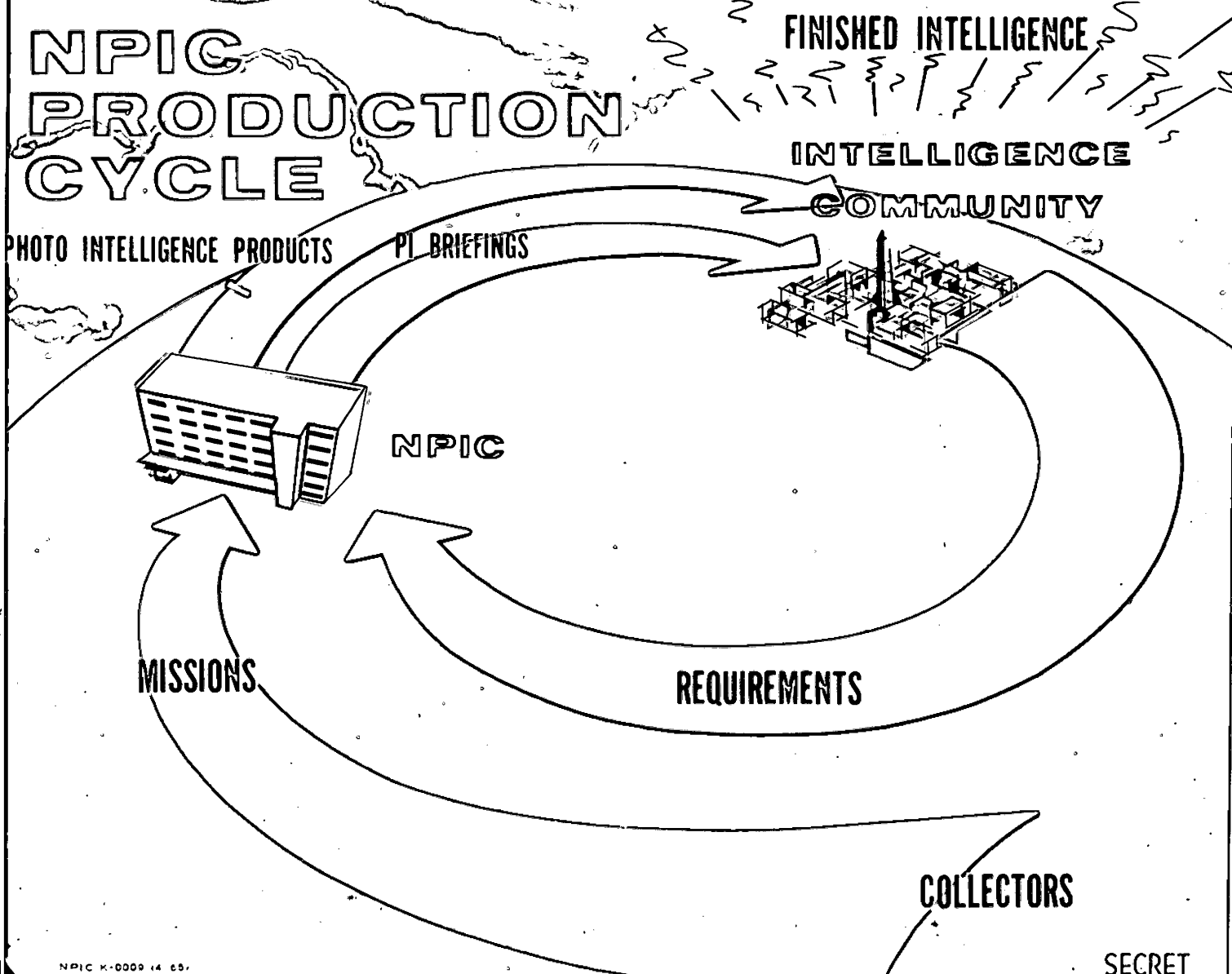
NATIONAL PHOTOGRAPHIC INTERPRETATION CENTER



SECRET



NPIC PRODUCTION CYCLE



SECRET

THE PI PRODUCTION PROCESS

PRE-MISSION ACTIVITIES

- SUPPORT TO MISSION PLANNING
- PREPARATION OF COLLATERAL MATERIALS
- PRE-MISSION BRIEFINGS
- SCHEDULING OF INPUT
- STAFFING OF PI TEAM & SUPPORT ELEMENTS

FIRST PHASE REPORTING

- FILM EDIT AT PROCESSING SITE
- RECEIPT OF EPHEMERIS DATA
- ARRIVAL OF FILM
- SCAN FILM FOR HIGH PRIORITY COMOR & BONUS TARGETS
- SELECTION OF BRIEFING BOARDS
- CABLES SENT TO ENTIRE COMMUNITY
- PUBLICATION OF HARD COPY REPORT
 - MENSURATION - GRAPHICS - PHOTO LAB - EDIT
 - REPRODUCTION - DISTRIBUTION

SECOND PHASE REPORTING

- PREPARATION OF MISSION COVERAGE PLOTS
- UPDATE OF TARGET BRIEFS
- SCAN FILM
- PUBLICATION OF HARD COPY REPORT
- CABLES TO COMMUNITY ON SIGNIFICANT FINDS

DETAILED REPORTING

- REQUIREMENTS RECEIVED FROM INTELLIGENCE COMMUNITY
- NPIC ADVISORY COMMITTEE ACCEPTS & PRIORITIZES
- PROJECT CHAIRMAN SELECTED & TEAM ASSIGNED
- PHOTOGRAPHIC RESOURCES SEARCHED
- SUPPORT REQUESTS LEVIED
 - MENSURATION - PHOTO LAB - GRAPHICS - COLLATERAL
- COMPREHENSIVE ANALYSIS OF FILM
- HARD COPY REPORT PREPARED
- FINAL REVIEW
 - SUBSTANCE - ACCURACY - SECURITY CONTROLS
- PRINTING & DISTRIBUTION

QUICK REACTION REPORTING

WHIC 1-6713 (7/65)

SECRET

Declassified in Part - Sanitized Copy Approved for Release 2014/06/18 : CIA-RDP78B05167A001800060001-9

Page Denied

SECRET

EXPLOITATION PROGRAM



A
first phase
reporting

- 1-CABLE REPORT
- 2-HARD COPY REPORT (IPIR)
- 3-BRIEFING BOARDS

B
second phase
reporting

- 1-MISSION INDEX (MI)
- 2-SUMMARY REPORT - NEW & SIGNIFICANT CHANGE TARGETS (MS)
- 3-SUMMARY REPORT-ORDER OF BATTLE INFORMATION (MS)
- 4-PHOTOGRAPHIC INTERPRETATION BRIEFS (PIB)

C
third phase
reporting

- 1-STANDING REQUIREMENTS
- 2-SPECIFIC REQUIREMENTS
- 3-US INTELLIGENCE BOARD (USIB) & SUB-COMMITTEE REQUIREMENTS

ACCURATE
TIMELY

EXPLOITATION

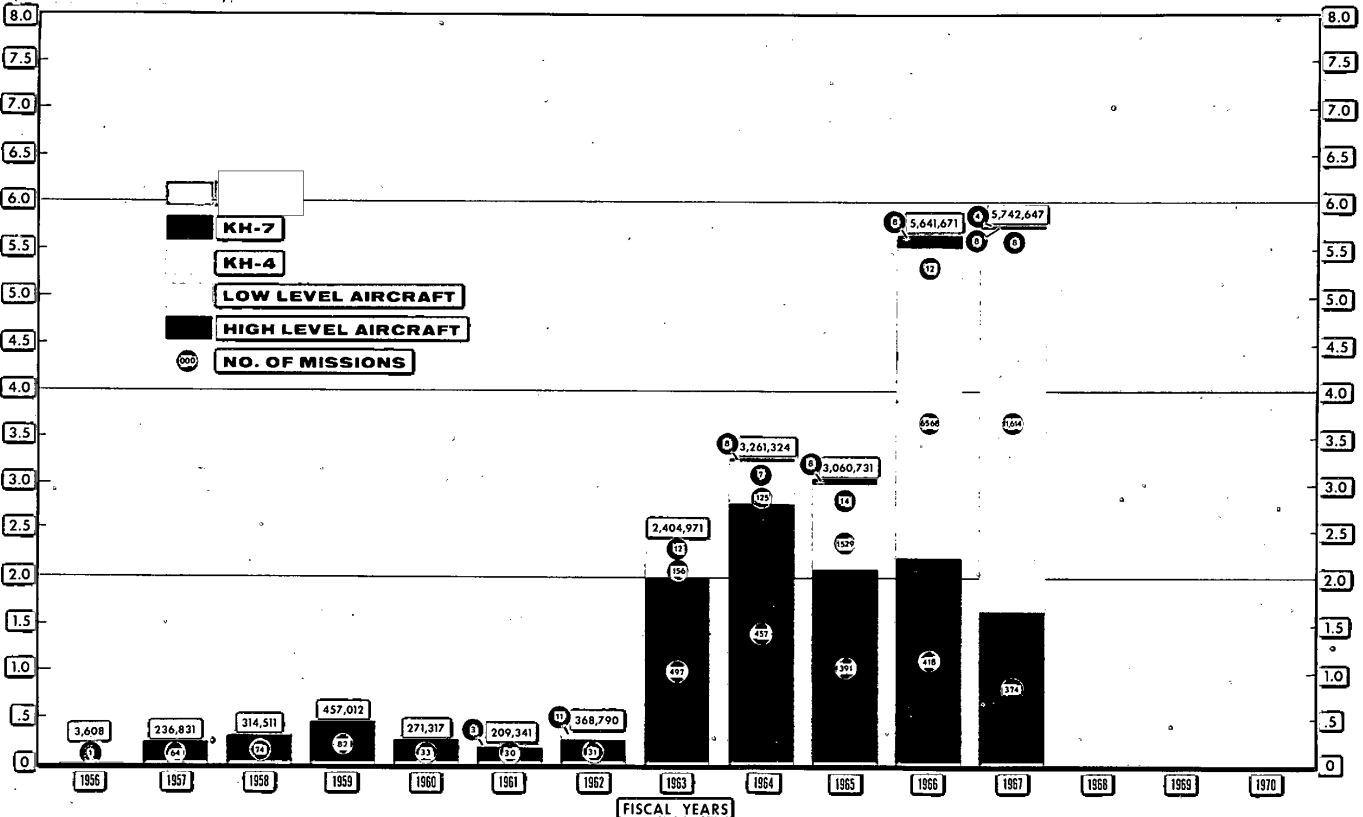
TOP SECRET CRESS-RUFF

MISSION INPUTS

FISCAL YEARS 1956-1970

NATIONAL PHOTOGRAPHIC INTERPRETATION CENTER

FILM FOOTAGE
(MILLIONS OF LINEAR FEET)



TOP SECRET CRESS-RUFF



TOP SECRET RUFF
Exempt from automatic downgrading and declassification

SEARCH SYSTEM

SELECTIVE TARGETING SYSTEMS

KH-4

KH-7

KH-8

50X1

FOCAL LENGTH	24"	77"
RESOLUTION (STATIC TESTING)	140-160 L MM	100-150L MM
GROUND RESOLUTION (OPTIMUM)	8'	2'
GROUND RESOLUTION (ESTIMATED OPERATIONAL)	10'	2'-3'
FILM WIDTH	70MM	9.46"
FILM CAPACITY	7,800' EACH CAMERA 15,600' PER SRV *	3000'
SCALE AT 90NM ALTITUDE	1:270,000	1:90,000
SWATH WIDTH AT 90NM ALTITUDE	120NM	10.6NM
ORBITAL LIFE	14 DAYS	5-8 DAYS
NUMBER OF PHOTOGRAPHIC ACQUISITION DAYS PRESENT	6-7 PER SRV *	7-8
NUMBER OF POTENTIAL COMOR TARGETS	3600 PER SRV *	800 (APPROX)

***SATELLITE RE-ENTRY VEHICLE**

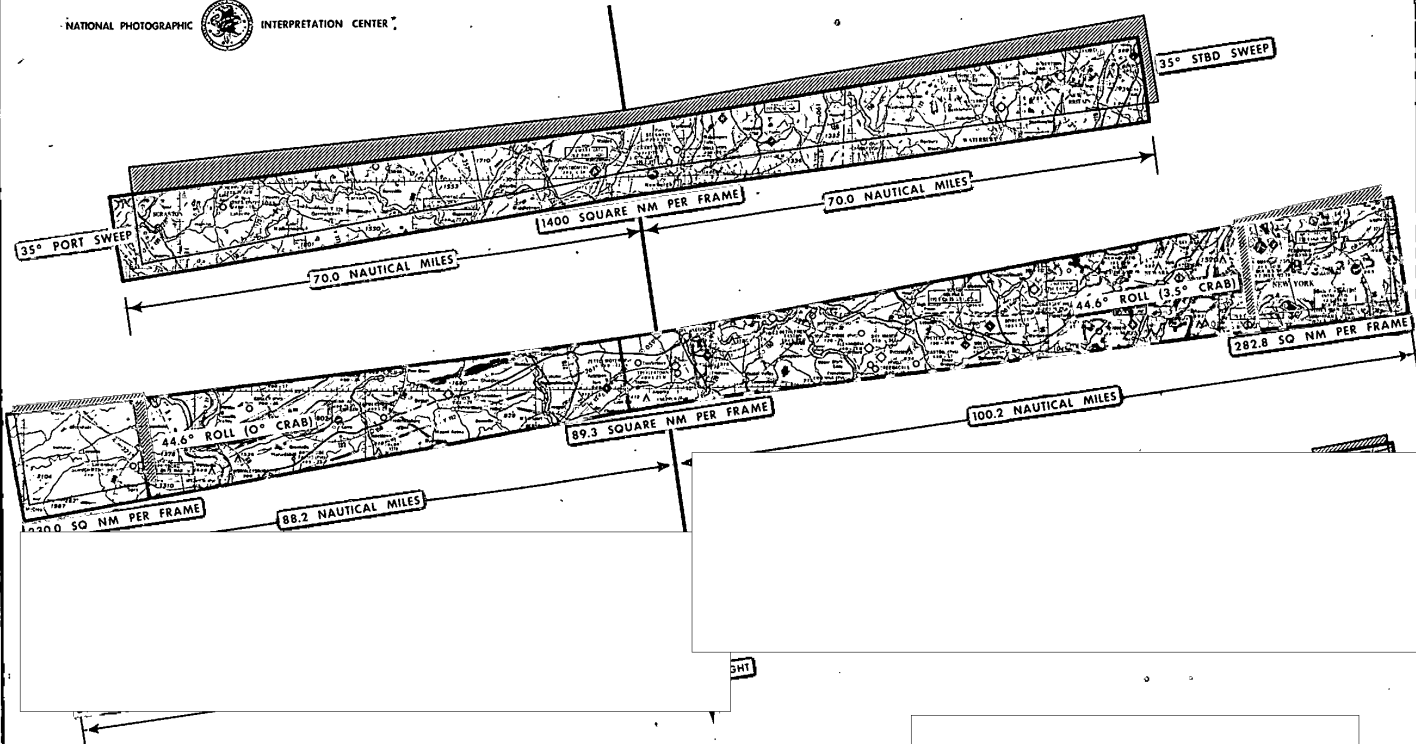
TOP SECRET RUFF

50X1

SEARCH & SPOTTING SATELLITE SYSTEMS COVERAGE COMPARISON

TOP SECRET RUFF

NATIONAL PHOTOGRAPHIC INTERPRETATION CENTER



50X1
50X1
50X1
50X1

KH-4 SEARCH SATELLITE SYSTEM
 ALTITUDE: 100 NM
 TWO 24" FOCAL LENGTH LENSES
 15,000' FILM CAPACITY EACH CAMERA
 STEREO OR MONOSCOPIC COVERAGE
 8-10 FOOT GROUND RESOLUTION

KH-7 SPOTTING SATELLITE SYSTEM
 ALTITUDE: 80 NM
 ONE 77" FOCAL LENGTH LENS
 3,600' FILM CAPACITY
 ROLL AND CRAB ATTITUDE CONTROL
 STEREO OR MONOSCOPIC COVERAGE
 2.4 FOOT GROUND RESOLUTION

TOP SECRET RUFF

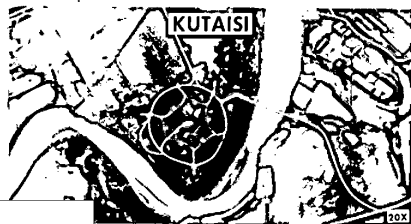
TOP SECRET RUFF

NATIONAL PHOTOGRAPHIC INTERPRETATION CENTER

SATELLITE SYSTEMS CAPABILITY AND QUALITY EVOLUTION

FOCAL LENGTH RECOVERY UNITS RESOLUTION TERR CAPACITY SQ NM COVERAGE DAYS IN ORBIT RECOVERY ORBIT	EV 1 (1960) ONE 30 FEET 3,400 FEET 1.4 MILLION ONE 17	EV 4 (1961) TWO 6.10 FEET 30,000 FEET 16.0 MILLION TWELVE 46.8 195	EV 7 (1962) ONE 30.38 INCHES 3,000 FEET 375,000 ONE 17	EV 7 (1962) ONE 34.50 INCHES 3,600 FEET 390,000 EIGHT 131	EV 8 (1967) ONE 22.58 INCHES 4,400 FEET 738,000 EIGHT 131
--	---	--	--	---	---

SEARCH SPOTTING



COUNTRIES COVERED*

MISSION 4001

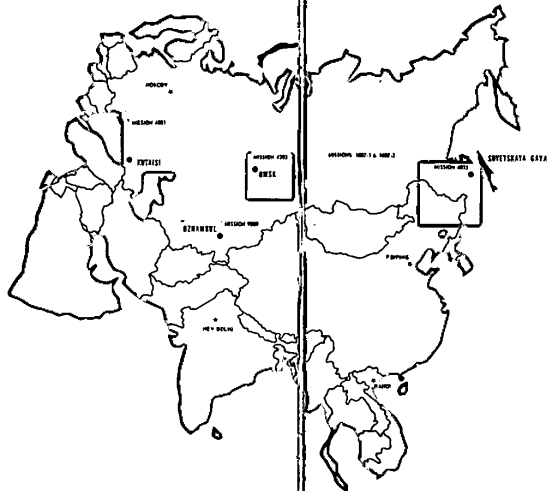
POLAND	104,592	HUNGARY	31,214
CZECHOSLOVAKIA	42,899	AUSTRIA	28,133
RUMANIA	79,686	EAST GERMANY	36,045



COUNTRIES COVERED*

MISSION 9009

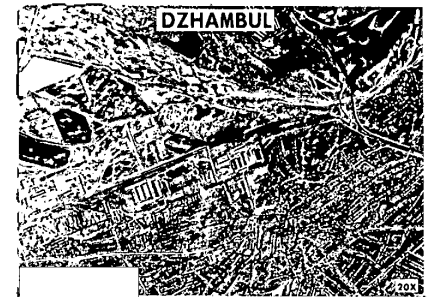
INDIA	1,094,933
PAKISTAN	317,009
AFGHANISTAN	218,090



COUNTRIES COVERED*

MISSION 4035

POLAND	104,592	HUNGARY	31,214
CZECHOSLOVAKIA	42,899	AUSTRIA	28,133
RUMANIA	79,686	EAST GERMANY	36,045
WEST GERMANY	83,196		



COUNTRIES COVERED*

MISSIONS 1037-1 & 1037-2:

RUSSIA	7,516,695	IRAN	552,939
CHINA	3,207,915	AFGHANISTAN	218,090
MONGOLIA	513,684	PAKISTAN	317,009
SWEDEN	150,878	KASHMIR	74,613
FINLAND	113,074	INDIA	1,094,933
POLAND	104,592	NEPAL	47,240
EAST GERMANY	36,045	BHUTAN	16,774
CZECHOSLOVAKIA	42,899	BURMA	228,336
HUNGARY	31,214	THAILAND	172,458
RUMANIA	79,686	CAMBODIA	57,881
BULGARIA	37,132	LAOS	79,452
SYRIA	61,897	SOUTH VIETNAM	57,309
JORDAN	32,415	NORTH VIETNAM	52,275
ISRAEL	6,946	NORTH KOREA	35,879
SAUDI ARABIA	758,395	SOUTH KOREA	26,070

TOTAL 16,002,747 SQUARE NAUTICAL MILES

* COUNTRIES THAT WOULD HAVE BEEN PHOTOGRAPHED IF THE SYSTEM HAD BEEN PROGRAMMED FOR MOND AND CLOUDS WERE NOT A FACTOR.

TOP SECRET RUFF

TOP SECRET HANDLE VIA TALENT/KEYHOLE CHANNELS ONLY

**REPORT OF THE JOINT
IMAGERY
INTERPRETATION
REVIEW GROUP**

I THE TASK (APPENDIX A)

- A. BACKGROUND**
- B. THE TASK**
- C. SURVEY PARAMETERS**
- D. ASSUMPTIONS**

II SUMMARY OF FINDINGS AND CONCLUSIONS

III RECOMMENDATIONS

IV CURRENT SITUATION

- CURRENT U.S. RECONNAISSANCE PROGRAMS (APPENDIX B)**
- EXPLOITATION REQUIREMENTS MANAGEMENT (APPENDIX C)**
- RESOURCES INVENTORY (APPENDIX D)**
- RESOURCES APPLICATION (APPENDIX E)**
- EXPLOITATION PRODUCTS (APPENDIX F)**
- OVERLAP AND DUPLICATION (APPENDIX G)**
- WORKLOADS, BACKLOGS, AND DEPTH OF EXPLOITATION (APPENDIX H)**

I THE TASK (APPENDIX A)

- A. BACKGROUND**
- B. THE TASK**
- C. SURVEY PARAMETERS**
- D. ASSUMPTIONS**

II SUMMARY OF FINDINGS AND CONCLUSIONS

III RECOMMENDATIONS

IV CURRENT SITUATION

- CURRENT U.S. RECONNAISSANCE PROGRAMS (APPENDIX B)**
- EXPLOITATION REQUIREMENTS MANAGEMENT (APPENDIX C)**
- RESOURCES INVENTORY (APPENDIX D)**
- RESOURCES APPLICATION (APPENDIX E)**
- EXPLOITATION PRODUCTS (APPENDIX F)**
- OVERLAP AND DUPLICATION (APPENDIX G)**
- WORKLOADS, BACKLOGS, AND DEPTH OF EXPLOITATION (APPENDIX H)**

V THE FUTURE TASK

- ESSENTIAL IMAGERY INTERPRETATION PRODUCTS (APPENDIX I)
- THE NATIONAL RECONNAISSANCE PROGRAM 1966-1971 (APPENDIX J)
- THE PROPOSED NATIONAL IMAGERY EXPLOITATION TARGET BASE (APPENDIX K)

VI ACCOMPLISHING THE TASK

- TASKING OPTIONS (APPENDIX L)
- THE NATIONAL TASKING PLAN (APPENDIX M)
- A CONCEPT FOR IMAGERY INTERPRETER RESOURCE ALLOCATION (APPENDIX N)

VII MAJOR SUPPORT ACTION REQUIRED

- COORDINATION OF R&D ACTIVITIES (APPENDIX O)
- ADP AND AUTOMATION (APPENDIX P)
- IMPROVING IMAGERY INTERPRETER PROFICIENCY
- THE REQUIRED INSTRUMENTALITY

Page Denied

Next 1 Page(s) In Document Denied

SECRET

EQUIPMENT CATEGORIES

☆ **IMAGERY INTERPRETATION EQUIPMENT....**

- MAGNIFIERS
- SIMPLE STEREOSCOPES
- MICROSCOPES (MONOSCOPIC)
- MICROSCOPES (STEREOSCOPIC)
- STEREOSCOPIC VIEWERS
- REAR PROJECTION VIEWERS
- LIGHT TABLES

☆ **MENSURATION EQUIPMENT....**

- PHOTO INTERPRETATION MEASUREMENT TOOLS
- PHOTO INTERPRETATION MEASUREMENT AIDS
- COMPARATORS (DIRECT VIEWING)
- COMPARATORS (REAR PROJECTION)
- COORDINATE READERS
- COORDINATE PLOTTERS
- STEREO PLOTTERS

☆ **PHOTOGRAPHIC LABORATORY EQUIPMENT....**

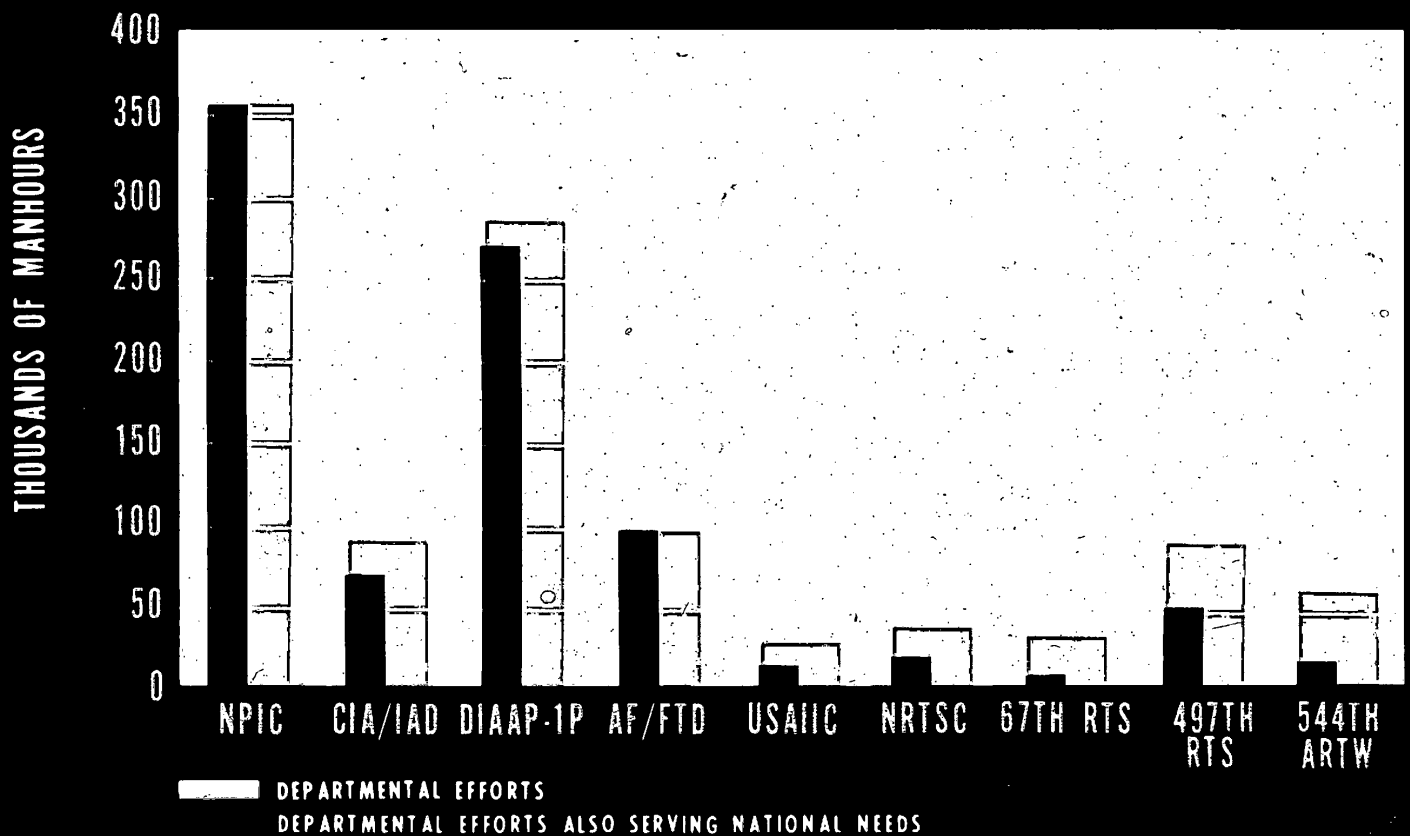
- PRINTERS (PROJECTION OR ENLARGERS)
- PRINTERS (CONTACT & CONTACT CONTINUOUS)
- FILM PROCESSORS
- DRYERS
- COPY CAMERAS
- MISCELLANEOUS LAB SUPPORT EQUIP

☆ **INFORMATION DATA HANDLING SYSTEMS EQUIPMENT....**

- CENTRAL PROCESSING UNITS
- PERIPHERAL DEVICES
- OFF LINE EQUIPMENT
- EAM

SECRET

FISCAL YEAR 1965



Page Denied

Next 3 Page(s) In Document Denied

SECRET



DEFINITION

DUPLICATION AMONG TWO OR MORE IMAGERY INTERPRETATION ORGANIZATIONS, IS DEFINED AS THOSE IMAGERY INTERPRETATION EFFORTS WHICH ARE SIMILAR OR ESSENTIALLY THE SAME AND WHICH RESULT IN SIMILAR OR COROLLARY INFORMATION, PRODUCTS, AND SERVICES.

SECRET

FACTORS FOSTERING DUPLICATION

- OVERLAPPING PRIMARY INTELLIGENCE PRODUCTION RESPONSIBILITIES
- INTERPRETATION OF ASSIGNED PRIMARY INTELLIGENCE PRODUCTION RESPONSIBILITIES
- REQUIREMENT FOR A SUPPLEMENTAL VIEW
- REQUIREMENT FOR MORE TIMELY OR DIFFERENTLY ORGANIZED INTERPRETATION INFORMATION
- NON-AVAILABILITY OF IMAGERY INTERPRETATION INFORMATION
- VARYING CONFIDENCE LEVEL

Page Denied

Next 2 Page(s) In Document Denied

TASK ASSIGNMENTS UNDER THE NATIONAL TASKING PLAN

FIRST & SECOND PHASE EXPLOITATION

THIRD PHASE BASIC SUPPORT EXPLOITATION

THIRD PHASE DIRECT SUPPORT EXPLOITATION

DEVELOPMENT AND MAINTENANCE OF THE NATIONAL DATA BASE

IMAGERY INTERPRETATION EQUIPMENT R&D SUPPORT

ADP AND AUTOMATION SUPPORT

MONITORING IMAGERY INTERPRETATION CONTRACTUAL SUPPORT

**SUPPORT TO ORGANIZATIONS ENGAGED IN BASIC SUPPORT
EXPLOITATION**

IMAGERY INTERPRETATION KEYS

BASIC INTELLIGENCE SUPPORT EXPLOITATION

Basic Intelligence Support Exploitation is that imagery interpretation effort which is undertaken to provide a flow of basic image-derived information required by more than one agency, department, or command. It is a step-by-step process of extracting and accumulating information from reconnaissance imagery. Basic Intelligence Support Exploitation involves and is limited to the derivation of information on each specific installation, object, activity, or search area examined. It requires the preparation of an authoritative base report which is augmented by information derived from subsequent First- and Second-phase reporting and is updated periodically, or as required by appropriate authority, during Third-Phase Exploitation. Basic Intelligence Support Exploitation can be provided as a service of common concern and effectively programmed against the acquisition of all modes of reconnaissance imagery.

CONFIDENTIAL

DIRECT INTELLIGENCE SUPPORT EXPLOITATION

Direct Support Exploitation is that imagery interpretation effort which is undertaken in direct and timely support of the assigned mission of an agency, department, or command. It is a dynamic "on demand" process in which directly subordinate imagery interpretation resources must be applied to meet the spectrum of intelligence needs of a higher authority which cannot be satisfied by Basic Support Exploitation. Direct Intelligence Support Exploitation thus is continuously oriented in support of the mission of an organization, rather than toward providing a flow of basic image-derived information from the imagery acquired by each successive reconnaissance mission. It is responsive to the changing needs of the higher authority being supported and can be effectively programmed only by that authority.

CONFIDENTIAL

Declassified in Part - Sanitized Copy Approved for Release 2014/06/18 : CIA-RDP78B05167A001800060001-9

Page Denied

Next 7 Page(s) In Document Denied

SECRET

ALTERNATIVES FOR A RECONNAISSANCE EXPLOITATION AUTHORITY AT THE NATIONAL LEVEL

- EXECUTIVE LEVEL AUTHORITY _____ *SEC DEF/DCI LEVEL*
- EXPANDED ADCOM _____ *NON-USIB INTERAGENCY
COMMITTEE*
- EXPANDED COMOR _____
- NEW USIB IMAGERY RECONNAISSANCE COMMITTEE } *USIB AFFILIATED*
- NEW USIB IMAGERY EXPLOITATION COMMITTEE }

THE COMMITTEE ON IMAGERY EXPLOITATION

Mission

- a) To foster, develop, and maintain a systematic coordinated interdepartmental approach to the exploitation of imagery at the national level.
- b) To monitor and coordinate all matters relating to implementation and execution of the National Tasking Plan.

Membership

USIB member departments and agencies, including representatives of the Army, Navy, and Air Force.

Subcommittees

- a) Exploitation Requirements
- b) Equipment R&D
- c) ADP and Automation

SECRET

NATIONAL PHOTOGRAPHIC



INTERPRETATION CENTER

MISSION OF THE COMIREX

Authority: DCID NO 1/13, effective 1 July 1967

In accordance with policies approved by the USIB, the Committee shall advise, assist, and generally act for the USIB on matters involving the coordinated development of intelligence guidance for imagery collection by overhead reconnaissance of denied areas and, as set forth in the "National Tasking Plan for the Exploitation of Multi-Sensor Imagery," on matters involving the exploitation of imagery. Any action or recommendation involving the establishment of policy shall be referred by COMIREX to the USIB. The responsibilities of COMIREX do not include intelligence guidance for the collection of imagery required in direct support of actively combatant forces.

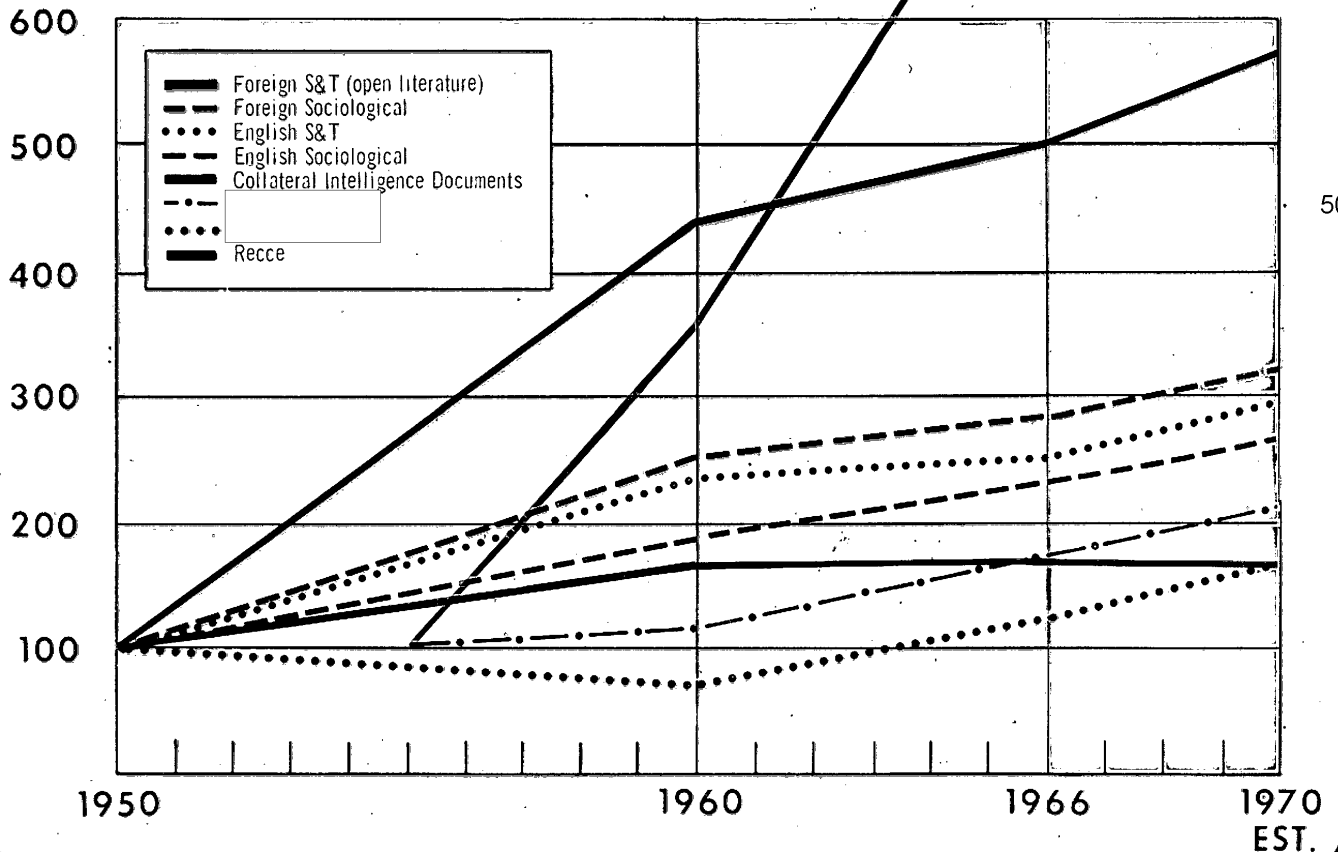
SECRET

NATIONAL PHOTOGRAPHIC INTERPRETATION CENTER



PERCENTAGE INCREASES IN UNIQUE ITEM INTELLIGENCE DOCUMENTS

PERCENT



50X1

SECRET