

FROM			DATE
Chief, Imagery Analysis Division, CIA			3 October 1966
TO	INITIALS	DATE	REMARKS
DIR			<p><i>Still put file on next PEC Agenda. Done 10 Oct 66</i></p> <p><i>What is this?</i></p> <p><i>Supp</i></p> <p><i>L.W.</i></p> <p><i>thank</i></p>
DEP/DIR			
EXEC/DIR			
TECH ADV			
SPECIAL ASST			
ASST FOR P&M			
ASST FOR OPS			
ASST FOR PA			
ASST FOR P&D	1		
CH/CSD			
CH/IPD			
CH/PD			
CH/PSD			
CH/TID			
CH/CIA/IAD			
CH/DIA/XX-4			
CH/DIA/AP-IP			
CH/SPAD			
LO/CGS/CIA			
LO/NSA			

25X1

think
Jimmy W.

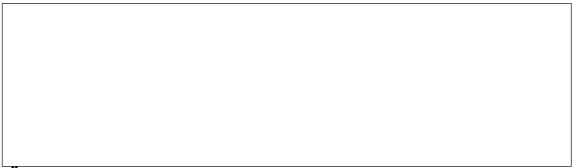
SECRET

*210
10 Oct 66*

IAD/OSS-220/66
3 October 1966

MEMORANDUM FOR: Assistant for Plans and Development Staff, NPIC
FROM: Chief, Imagery Analysis Division, CIA
SUBJECT: R&D Project Suggestion No. 118 (Vugraph Maker)

1. This suggestion has come to our attention through personnel from your Staff.
2. Since we make considerable use of vugraphs and quite often have need for visual aids of this type on a "crash" basis, we are keenly interested in such a development.
3. We are most hopeful that a contract for a "vugraph-making" device will be obtainable with FY-67 funds and offer our assistance in any manner which will help achieve this goal.



25X1

Distribution
Original - Addressee
2 - OSS/IAD

SECRET

GROUP 1
Excluded from automatic
downgrading and
declassification

Classification

PROJECT SUGGESTION ROUTING SHEET (PSRS)

For VU-GRAPH MAKER
Project Suggestion Title

Instructions:

- a. At each numbered step a copy of the updated PSRS shall be sent to the Designee except in steps 10 and 11.
- b. Use charge # ⁹⁹²⁴⁵⁻⁶ ~~999701~~ when working on any Project Suggestion.

1. PSRS originated by Designee of Eval. Com. Chmn. on 13 June '66
Date

2. To Eval. Com. Chmn. for Proceed/Stop decision by Committee

Proceed Date of decision 13 June
 Stop

3. To Assistant for Plans and Development for review

Disagree - Proceed Date of review _____
 Agree - Stop

4. To Eval. Com. Chmn. for assignment to Branch

Assigned to Dev. Br. Branch; Date 13 June

5. To Assigned Branch Chief for Investigator assignment

Assigned to Mr. _____ on _____;
Investigation to be completed by _____

6. To Investigator to gather data and information

Investigation completed on _____

7. To Eval. Com. Chmn. (thru Br. Chief) for Recommendation

Recommend Proceed; Project title _____
_____ ; Assign to _____ Branch

Recommend Stop

8. To Assistant for Plans and Development for decision

Drop Project Suggestion Date _____

Originate Project Signature _____

9. To Administrative Assistant for project number assignment

Project number _____; Date _____

10. To Designee for origination of PSRM

PSRM to originator and PSRM, PSF, PSRS copies to file _____
Date

11. To Assigned Branch Chief

Classification







TRANSMITTAL SLIP		DATE
TO:		
ROOM NO.	BUILDING	
REMARKS:		
160 hrs engr./management		mag. 70%
160 hrs. updating		vent. 80%
36 hrs machinist (added)		light table 75
40 hrs assay (added)		
40 hrs PERT		process 50
new lenses		transport 90
		panels 60
FROM:		
ROOM NO.	BUILDING	EXTENSION

FORM NO. 241
1 FEB 55

REPLACES FORM 36-8
WHICH MAY BE USED.

GPO : 1957-O-439445 (47)

25X1

LIST OF MEMOS CONCERNING OVERRUN OF AUTOMATIC VIEWGRAPH GENERATOR

5 September 1967 - IAS/TA-19/67
To: Development Branch, TDS/NPIC
From: Tech Advisor, IAS/DDI
Deletion of 2nd Viewgraph Generator from Contract

18 September 1967 - NPIC/TDS/D-1020-67
Memorandum for the Record
From:
Anticipated Overrun of Viewgraph Generator

3 October 1968 - NPIC/TDS/D-1053-67
Memorandum for the Record
From:
Background on Overrun

Undated -- Historical Data for Project #10197, Viewgraph
Generator Contract

18 October 1967 - Draft
Memorandum for the Record
From:
Suggested Format for Letter

23 October 1967 - NPIC/TDS/D-1089-67
Memorandum for Asst for ~~the~~ Technical ^{Development} Director
From: Chief, Development Staff
Recommended Action to be Taken on Overrun

26 October 1967 - NPIC/TDS-195/67
Memorandum for: Director, NPIC
From: Asst. for ~~the~~ Technical ^{Development} Director
Request for Overrun Expenditures

3 November 1967 - NPIC/TDS-204/67
Memorandum for: Chief, Support Staff
From: Asst. for ~~the~~ Technical ^{Development} Director
Notification of Non-acceptability of overrun

12 March 1968 - PSG-036/68
Memorandum for: Chief, TSSG
From: Chief, PSG
Recommend for approval

25 March 1968 - NPIC/TSSG/DED-1133-68
Memorandum for: Director, NPIC
From: chief, TSSG
Request Approval to pay Overrun

DED No.

Contract No.

[Redacted]

No.

25X1

PI Print Enlarger 10147

[Redacted]

Costs include estimated fees

contract signed	Est. cost to complete	Est. cost to complete	Est. cost to complete
27 Feb 1967	18 July 1967	18 Sept 1967	19 June 1968

25X1

[Redacted]

Contract terminated.
Work is incomplete
Contractor to ship parts.

Contract originally scheduled for completion 27 Sept 1967
~~Shippage~~

DED No.

Contract No.

25X1

Automatic Viewgraph Generator

10197

[Redacted]

Costs include estimated fees.

contract signed	Estimated cost to complete	Est. Cost to Complete
13 April 1967	14 Sept. 1967	13 June 1968

25X1

[Redacted]

Original completion date 14 August 1967

Extended to 14 Sept. 1967 in June 1967

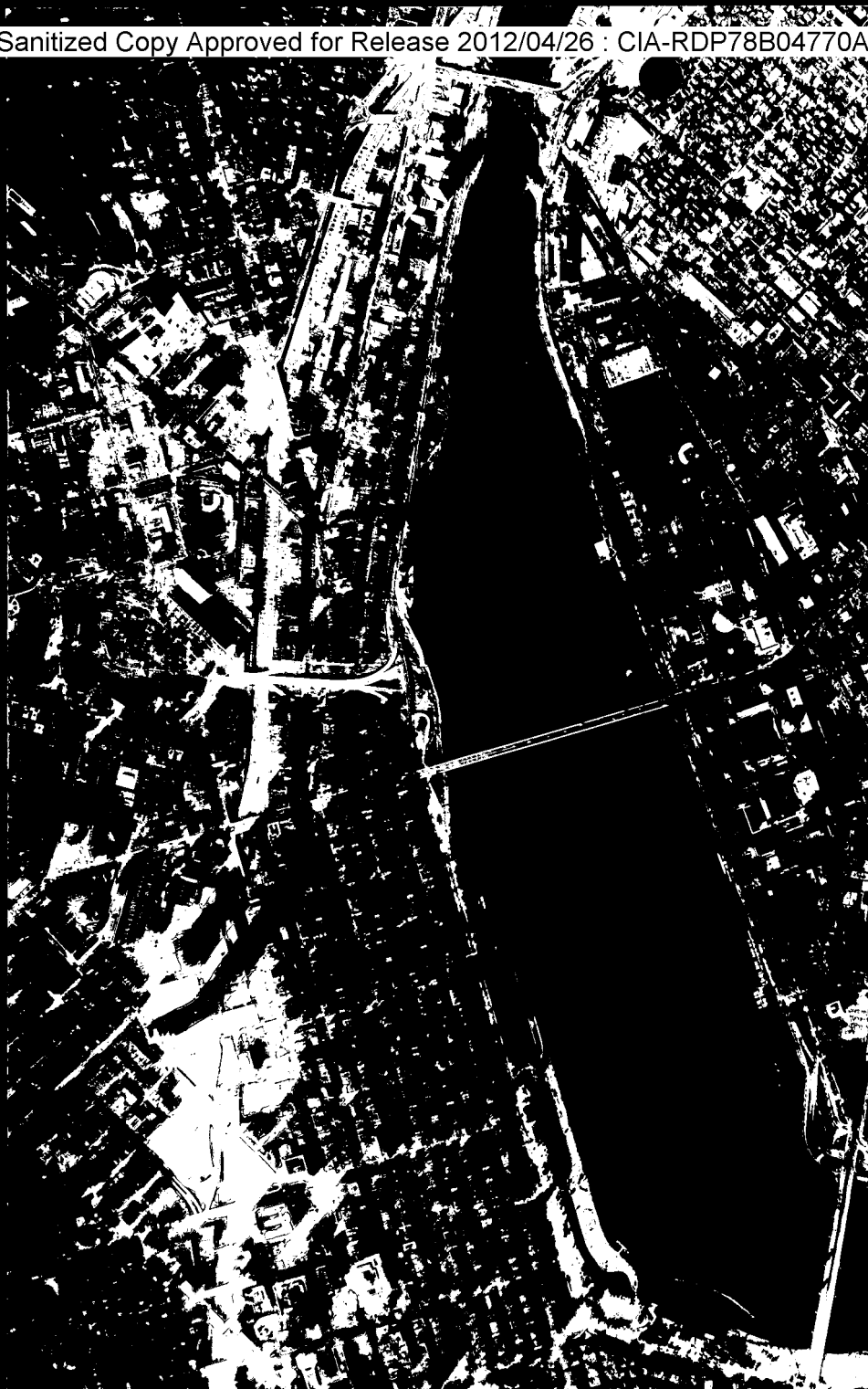
Estimated completion date - Feb 1969

Slippage partly due to approval time req'd by Government.

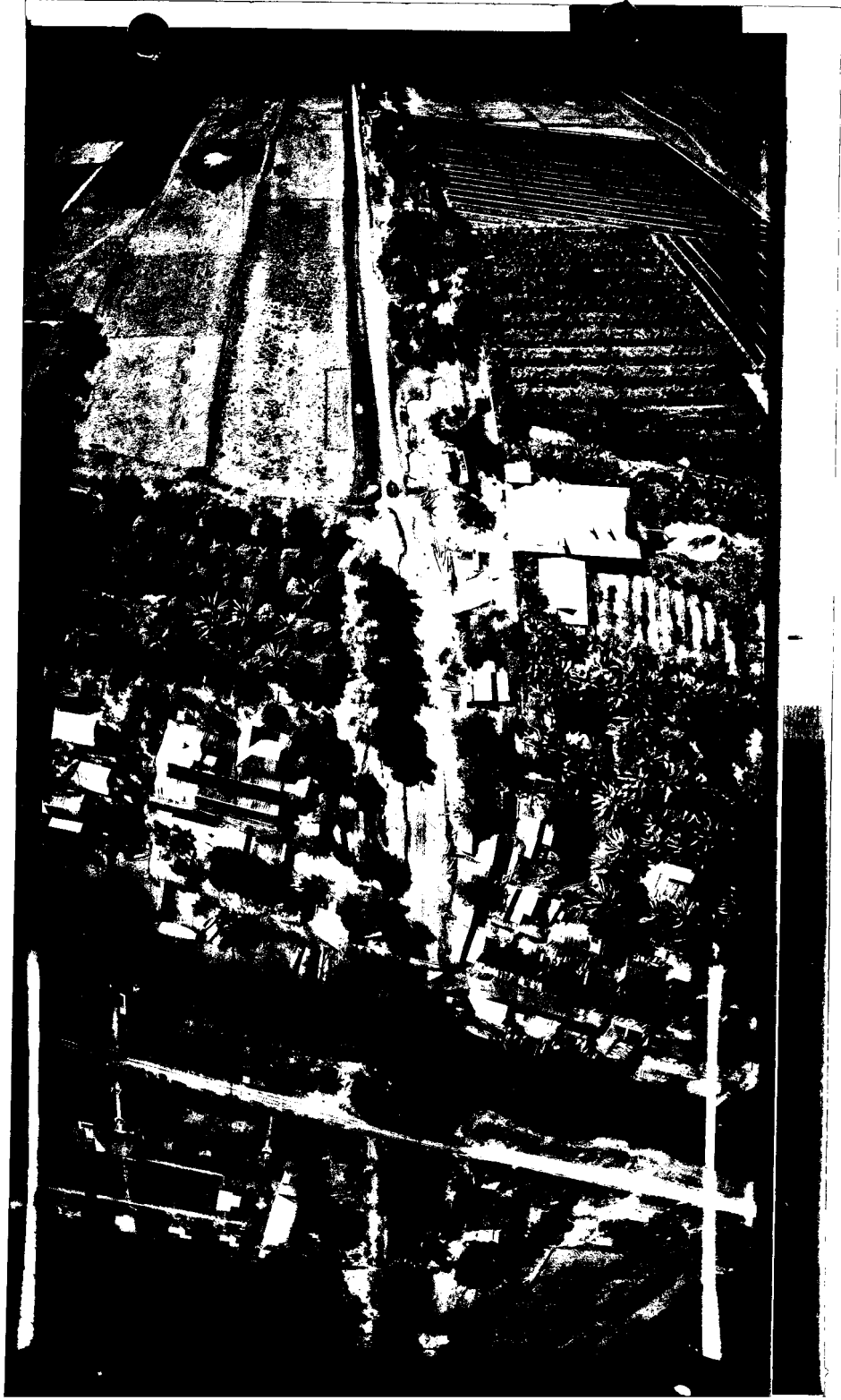
Page Denied



Declassified in Part - Sanitized Copy Approved for Release 2012/04/26 : CIA-RDP78B04770A002800020033-5



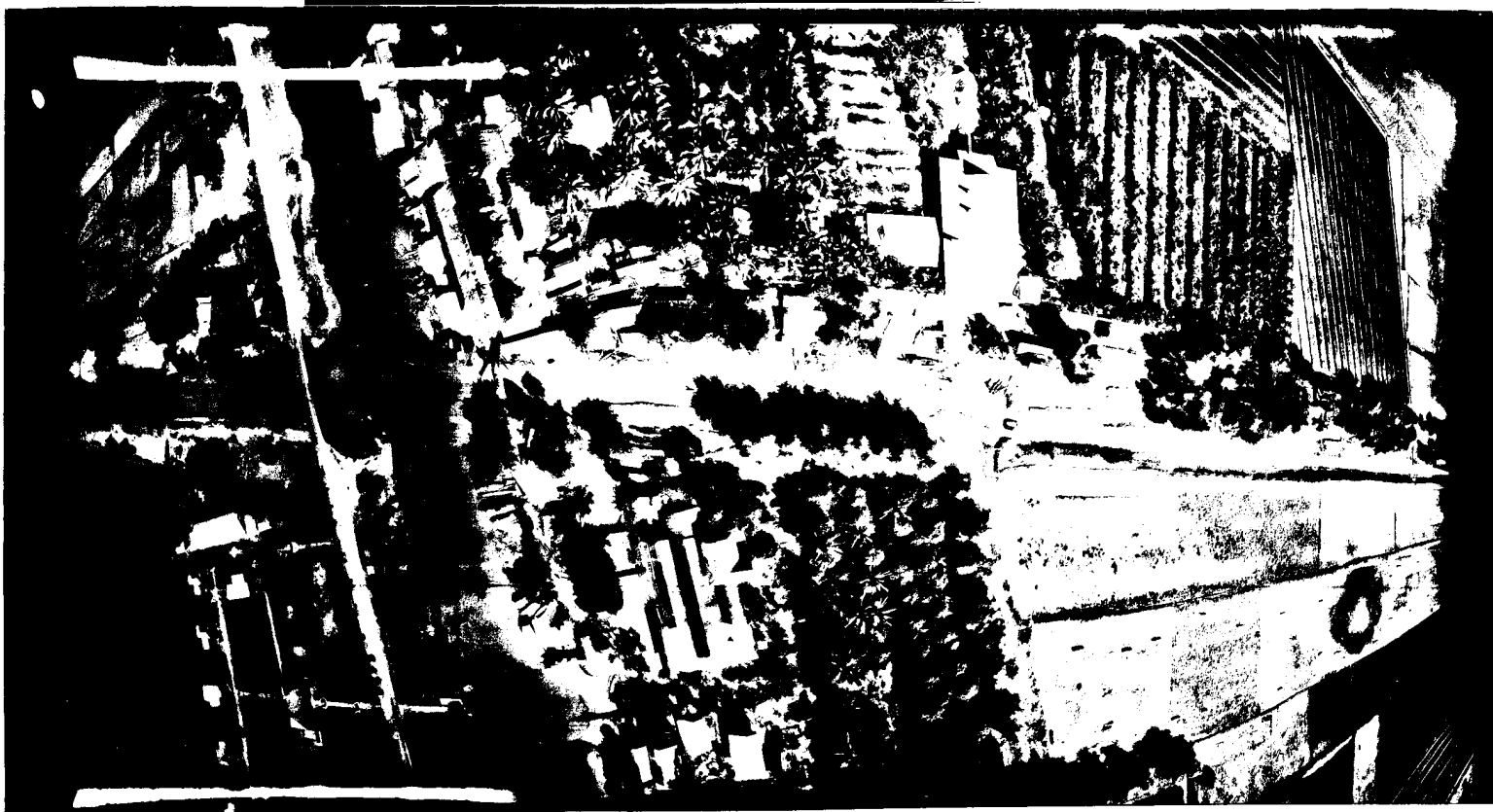
Declassified in Part - Sanitized Copy Approved for Release 2012/04/26 : CIA-RDP78B04770A002800020033-5



1,197

TYPE 1-K

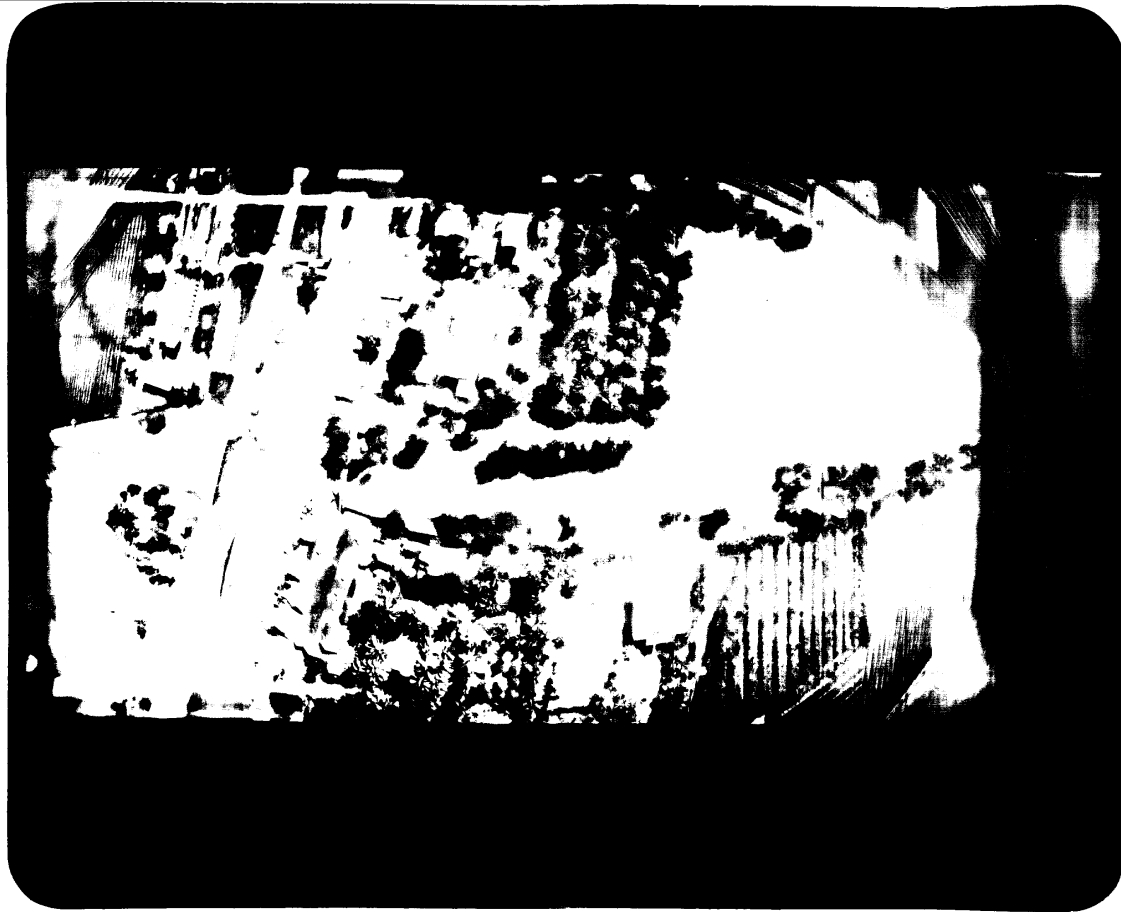
4 SEC. f/22 5'/MIN. 73°F



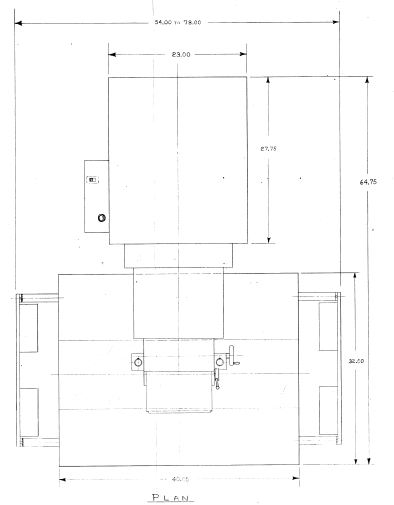
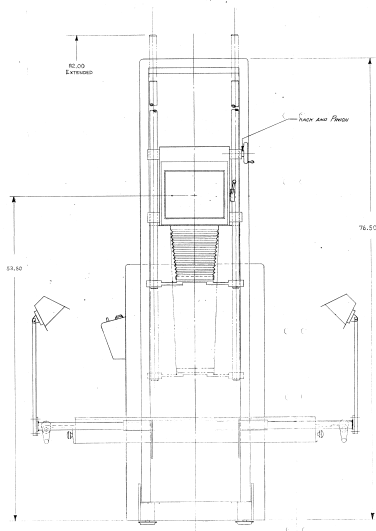
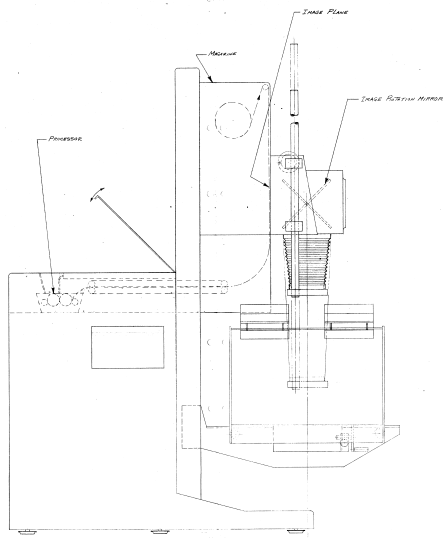
THRU BASE

7 SEC. f/22 5'/MIN. 73°F

9/28/67



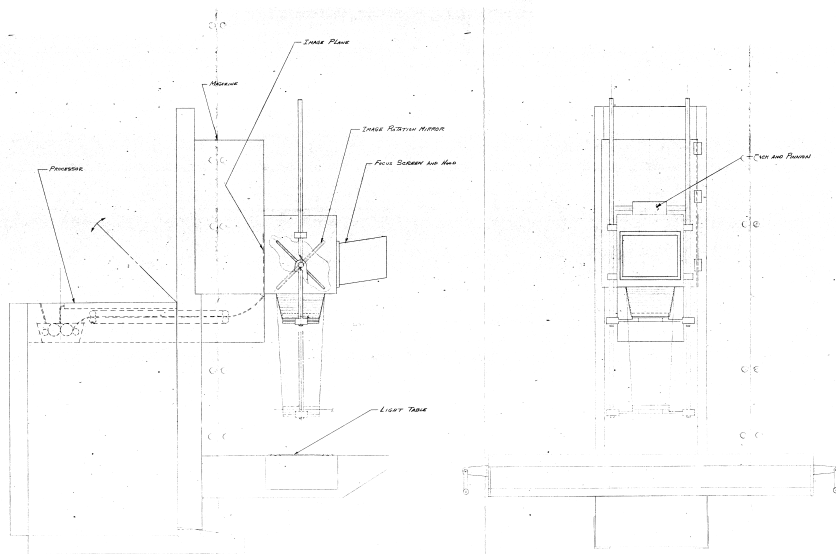
PROTECTED BY PAT. DESIGN COPY RIGHTS BY PATENT & TRADEMARK OFFICE



REV	DATE	BY	CHKD	DESCRIPTION	MATERIAL	QUANTITY
1						
2						
3						
4						
5						
6						
7						
8						
9						
10						
11						
12						

115703

INSPECTED BY: J 92208
DATE: 11/5/03
MATERIAL: 115703



115703

NO.	DATE	DESCRIPTION	BY	CHECKED	DATE
1		ISSUED FOR CONSTRUCTION			
2		ISSUED FOR CONSTRUCTION			
3		ISSUED FOR CONSTRUCTION			
4		ISSUED FOR CONSTRUCTION			
5		ISSUED FOR CONSTRUCTION			
6		ISSUED FOR CONSTRUCTION			
7		ISSUED FOR CONSTRUCTION			
8		ISSUED FOR CONSTRUCTION			
9		ISSUED FOR CONSTRUCTION			
10		ISSUED FOR CONSTRUCTION			
11		ISSUED FOR CONSTRUCTION			
12		ISSUED FOR CONSTRUCTION			

PROJECT NO.	115703
DESCRIPTION	LAYOUT STUDY
DATE	J 92208
DESIGNED BY	
CHECKED BY	
DATE	
SCALE	1:1
BY	
CHECKED	
DATE	

REVISIONS
PAGE