

# MEMO

from [redacted]

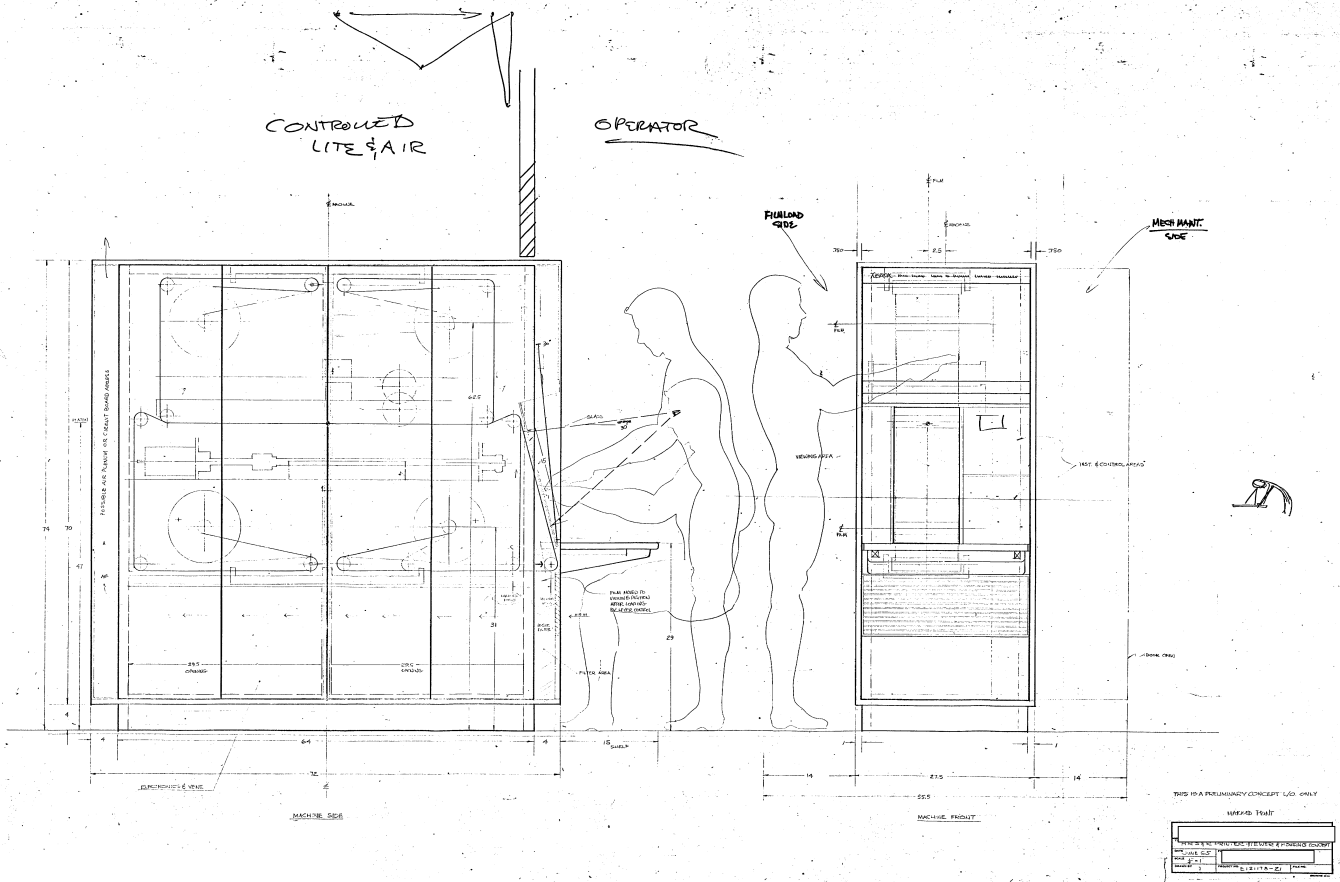
To \_\_\_\_\_ Date 19 July 65 Time \_\_\_\_\_

The attached drawings were hand-carried to us by [redacted]

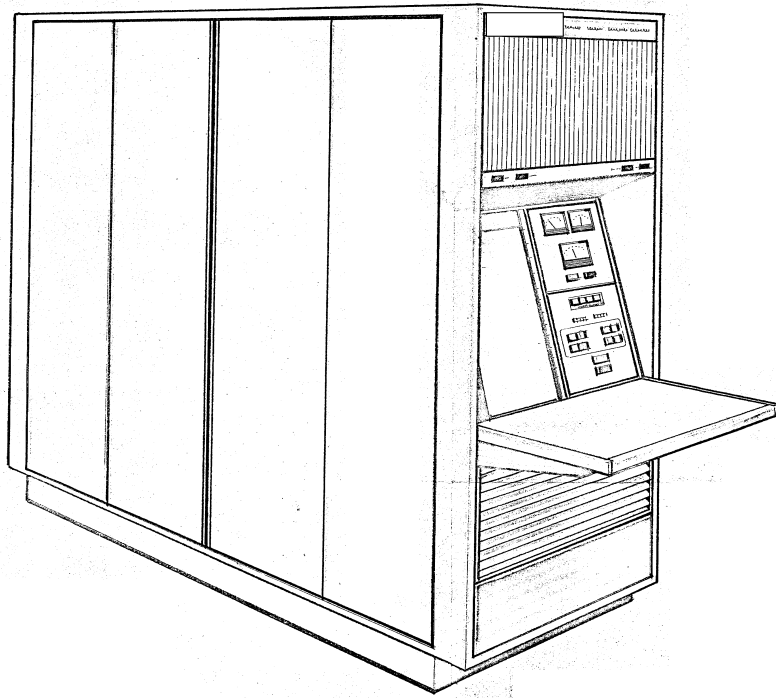
[redacted] on 30 June 65.

[redacted] PSD/PLB, attended the meeting and gave his OK to the new printer configuration as shown on the drawings.

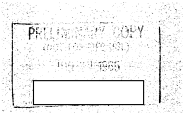
**NGA Review Complete**



Approved For Release 2005/06/23 : CIA-RDP78B04770A001600020018-5



25X1



STAT

Approved For Release 2005/06/23 : CIA-RDP78B04770A001600020018-5



B. Air Conditioning:

Room temperature 70° F + 5° F. Humidity 50% R.H. + 5%  
 Output of Instrument 17,000 BTU/Hr. -  
 If air must be filtered, what is maximum permissible particle size  
 in microns? \_\_\_\_\_ What particle count? \_\_\_\_\_  
 particles per cubic foot.  
 Direct connection to instrument? Yes \_\_\_\_\_ No X  
 If yes to above, what is the desired air temperature to instrument?  
 \_\_\_\_\_  
 Should discharged air be ducted separately? yes  
 Is discharged air noxious? no toxic? no  
 Connector size to instrument 4" Diameter Ducting

C. Plumbing:

Is water required for the instrument? Yes \_\_\_\_\_ No X  
 Water pressure \_\_\_\_\_ Flow in GPM \_\_\_\_\_  
 Type of water desired:  
 Tap \_\_\_\_\_ <sup>OF</sup> + \_\_\_\_\_ <sup>OF</sup>  
 Tempered \_\_\_\_\_ <sup>OF</sup> + \_\_\_\_\_ <sup>OF</sup>  
 Deionized \_\_\_\_\_ <sup>OF</sup> + \_\_\_\_\_ <sup>OF</sup>  
 Filtered \_\_\_\_\_ <sup>OF</sup> + \_\_\_\_\_ <sup>OF</sup> Particle size and count per  
 unit volume.  
 Type of pipe required:  
 Galvanized \_\_\_\_\_ Copper \_\_\_\_\_  
 Stainless Steel \_\_\_\_\_ Plastic \_\_\_\_\_  
 Is floor drain required? Yes \_\_\_\_\_ No X  
 Diameter of drain \_\_\_\_\_ Galvanized drain \_\_\_\_\_  
 Plastic drain \_\_\_\_\_ Glass drain \_\_\_\_\_

D. Compressed Air:

Diameter of connectors \_\_\_\_\_ Type of connectors \_\_\_\_\_  
 PSI \_\_\_\_\_ Water free? \_\_\_\_\_  
 CFM \_\_\_\_\_ Oil free? \_\_\_\_\_

E. Vacuum:

Is vacuum required? Yes \_\_\_\_\_ No X  
 Vacuum required \_\_\_\_\_ PSIA or \_\_\_\_\_ (inches) (milli-  
 meters) of Hq \_\_\_\_\_  
 Displacement \_\_\_\_\_ CFM \_\_\_\_\_

IV. REMARKS

In the event additional space is required for environmental conditions  
 or utilities not mentioned above, use the reverse side of this form.

ILLEGIB

Approved For Release 2005/06/23 : CIA-RDP78B04770A001600020018-5

Approved For Release 2005/06/23 : CIA-RDP78B04770A001600020018-5