

SECRET

1 August

25X1

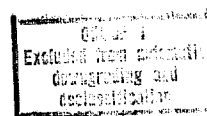
Multi-Motion Table

The following information was relayed to on July 31, 1963:

25X1

1. Add a bushing to each end of the roller shafts that support the segmented nylon rollers.
2. The slide lock shoe cuts into the nickel plating of the slide shaft and causes peeling. Both shafts should be made of polished stainless steel and the plating eliminated.
3. The rotational movement of the light box is too stiff. As a consequence the entire table tends to move when the light box is rotated. Light box should be supported on roller bearings and braking applied by pressure on the periphery of the disk. The rotation brake does not operate very well. In addition, the handle of this brake is too long and it strikes the main support for the light table when the table is tilted down through 30°. To correct, exchange this handle for the handle on the tilt mechanism brake or replace with one the same size as the tilt brake handle.
4. The light table tilts adequately when two 70 mm reels are used. However, with a 9½" reel or two 5" reels, one of the reel arms strikes the tilt control knob and restricts the amount of tilt. This should be corrected.
5. The edges of the light table glass are ground but not polished smooth. Since this can damage film, the edges should be smoothed.
6. The metal feet are too small and do not provide sufficient room for fingers under the base plate when lifting and moving the table. The metal feet also scratch soft desk tops. To correct, add rubber feet to the existing metal feet. The rubber feet will also prevent the entire table from moving when the light box is rotated (see Item No. 3)
7. The edge of the masking curtain is not square with the edge of the metal slide and as a result the edge of the curtain is wrinkled.
8. To gain access to the lamp ballast, it is necessary to remove each of the masking curtains from their rollers and remove the curtain shafts. This is very difficult and takes up a great deal of time. The curtain rollers and shafts should be mounted on brackets attached to the lamp mounting plate so that the entire unit can be lifted out by simply removing the knurled thumb wheel on the outside.

SECRET



~~SECRET~~

9. The nuts for mounting reel brackets were glued to the inside of the box and fell off either before or during an attempt at mounting the brackets. As a result the entire light assembly had to be removed in order to attach the nut. The nuts should be captivated to the inside of the light box.

10. Table had not been assembled carefully and many screws were loose.

11. The knobs on all the locking brakes were improperly positioned and did not provide braking. All of them had to be reset. A depression should be drilled into the side of each shaft so that the set screw for attaching the brake knob can be screwed into this depression and prevent the knob from slipping. However, particular attention should be given to positioning the knob so as to provide braking.



25X1

Development Branch, P&DS

~~SECRET~~