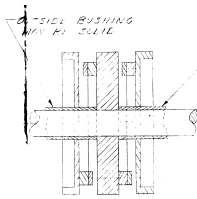
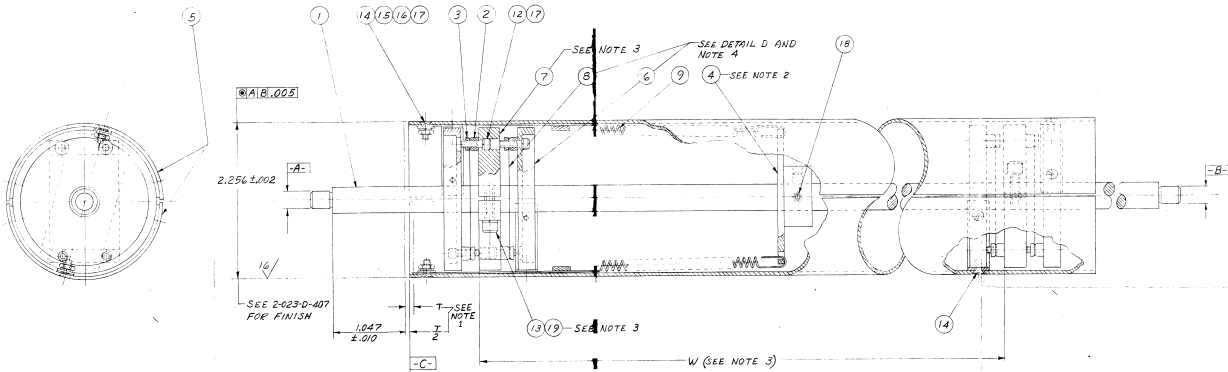


Patent Submission
floating rollers. (BPE)

NOTES

- 1.0 **T** FULL TRAVEL OF SLATS
- 2.0 ITEM 4 IS TO BE LOCATED ON SHAFT (1) SO THAT WHEN ASSEMBLY IS VERTICAL THE SLATS (5) WILL BE SUSPENDED BY EXTENSION SPRINGS (2) WITH THEIR ENDS APPROXIMATELY AT "C".
- 2.1 AFTER ASSEMBLY IS COMPLETED THE EXTENSION SPRINGS (2) ARE TO BE ADJUSTED, AT ITEMS (4), SO AS TO CAUSE ENDS OF SLATS (5) TO BE SUSPENDED EXACTLY AT "C".
- 2.2 AFTER FINAL ADJUSTMENT THE SPRING WIRE IS TO BE BENT AROUND SCREW (4) AND SECURELY CLAMPED UNDER WASHER (18) WHICH MUST NOT EXTEND PAST END OF SLATS (5) EXCESS WIRE MAY BE CUT OFF.
- 3.0 ITEMS 7 ARE TO BE POSITIONED ON SHAFT WITH CLAMPING SCREWS 180° APART.
- 3.1 DIMENSION "W" TO BE SUCH AS TO ALLOW MAX. TRAVEL OF SLATS.
- 4.0 CONCENTRICITY MUST BE MAINTAINED BETWEEN ITEMS 6 AND ITEM 1, DURING INSTALLATION OF ITEMS 6. SEE ASSEMBLY DETAIL "D".



DETAIL D

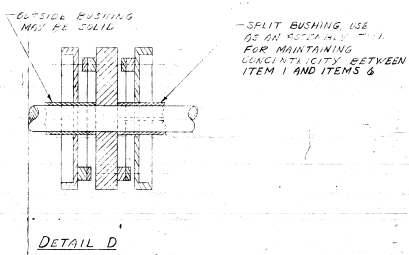
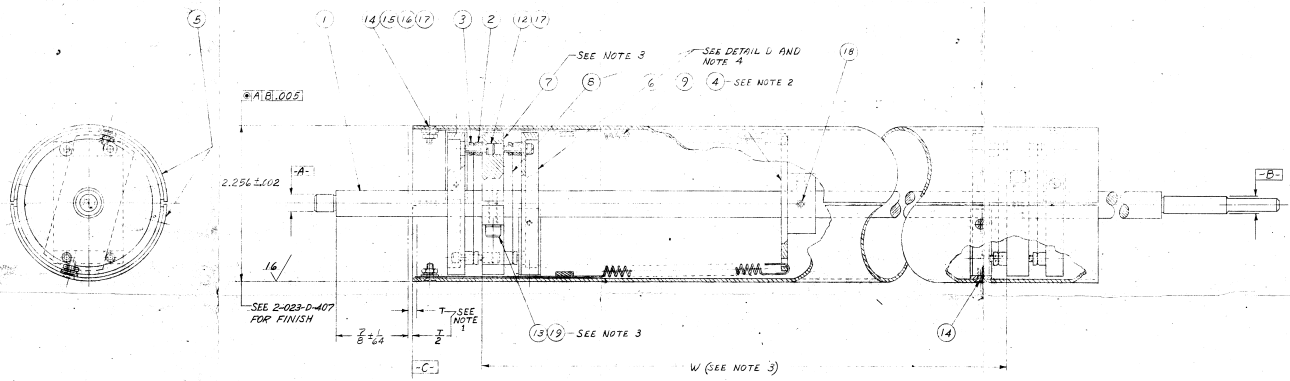
QTY	DESCRIPTION	REF. DESIG.	UNIT
19	2 WASHER, LOCK, SPRING, NO. 6 AM. STD. LIGHT. SST.		
18	2 BELT SCREW, NO. 2-33 x 1/32, HEX SOCKET, W/LOCK TYP. NO. 180 SST. CAT. NO. BE-3-D.		
17	1/8 W/SH. W/SH. SCREW DOUBLE CHAMFER, NO. 2-33 x 1/32		
16	2 WASHER, PLAIN, AM. STD., 3/32 I.D. 1/4 O.D. #. 2027TK, SST.		
15	2 NUT, 1/8" W/SH. SCREW, DOUBLE CHAMFER, NO. 2-33 x 1/32		
14	14 SCREW MACHINE, NO. 2-36 UNC-2A x 1/4 SLOTTED FLAT HD. SST.	7-023-D-406	
13	2 SCREW, CAR 1940 SERIES, NO. 2-32 UNC-2A x 1/8, HEX. SSC. NO. SST.		
12	1 SCREW, CAR 1940 SERIES, NO. 2-BL UNC-2A x 3/16, HEX. SSC. NO. SST.		
11	2 2-023-B-406 EXTENSION SPRING		
10	2 2-023-B-406 FLAT SPRING		
9	2 2-023-C-407 FIXED FLANGE		
8	4 2-023-C-406 CLAMPING DISK		
7	1 2-023-D-407 ROLLER SLATS (PAIR)		
6	1 2-023-B-406 FLANGED ROLLER		
5	1 2-023-B-406 INCREASED BAR		
4	2 2-023-B-406 SPRING SCREW		
3	1 2-023-B-406 ROLLER SHAFT		

REV.	DATE	BY	CHKD.	DESCRIPTION
1				ISSUED FOR DESIGN
2				ISSUED FOR MANUFACTURE

TITLE: NON-STEERING ROLLER ASSEMBLY, L.H.
 DRAWING NO.: 7-023-D-406
 SHEET NO.: 2/11
 TOTAL SHEETS: 11

NOTES

- 1.0 FULL TRAVEL OF SLATS
- 2.0 ITEM 4 IS TO BE LOCATED ON SHAFT (1) SO THAT WHEN ASSEMBLY IS VERTICAL THE SLATS (5) WILL BE SUSPENDED BY EXTENSION SPRINGS (9) WITH THEIR ENDS APPROXIMATELY AT "C".
- 2.1 AFTER ASSEMBLY IS COMPLETED THE EXTENSION SPRINGS (9) ARE TO BE ADJUSTED AT ITEMS (4) SO AS TO CAUSE ENDS OF SLATS (5) TO BE SUSPENDED EXACTLY AT "C".
- 2.2 AFTER FINAL ADJUSTMENT THE SPRING WIRE IS TO BE BENT AROUND SCREW (18) AND SECURELY CHAMFER UNDER WASHER (19) WHICH MUST NOT EXTEND PAST END OF SLATS (5) EXCESS WIRE MAY BE CUT OFF.
- 3.0 ITEMS 7 ARE TO BE POSITIONED ON SHAFT WITH CLAMPING SCREWS (6) 90° APART.
- 3.1 DIMENSION "W" TO BE SUCH AS TO ALLOW MAX. TRAVEL OF SLATS.
- 4.0 CONCENTRICITY MUST BE MAINTAINED BETWEEN ITEMS 6 AND ITEM 1, DURING INSTALLATION OF ITEMS 6. SEE ASSEMBLY DETAIL "D".



QTY	DESCRIPTION	REF
19 2	WASHER LOCK SPRING NO. 6 AM. STD. LIGHT S&T	
18 2	SET SCREW NO. 6-32 X 5/32 HEX SOCKET NYLON TIP "NO MAR" SST. QTY. NO. BE-3-C.	
7	(OR EQUIV.)	
19 18	WASHER LOCK SPRING NO. 2, AM. STD. LIGHT, SST	
16 2	WASHER PLAIN AM. STD. 3/32 ID. 1/4 O.D. X .020 THK. SST	
15 2	NUT, HEX. MACH. SCREW, DOUBLE CHAMFER, NO. 2-5/16 X 28 X 3/16, SST	
14 14	SCREW MACHINE NO. 2-5/16 X 1/4 SLOTTED FLAT HD. SST	1-023-D-405
13 2	SCREW CAR 1940 SERIES NO. 6-32 X 3/4 1/8, HEX. SDC. HD. SST	
12 16	SCREW, CAR 1940 SERIES NO. 2-5/16 X 3/4 5/16, HEX. SDC. HD. SST	
9 2	SCREW-416 EXTENSION SPRING	
8 4	SCREW-416 PLAT. SPRING	
7 2	SCREW-416 ROLLER PLATE	
6 2	SCREW-416 FLOATING DISK	
5 1	SCREW-416 ROLLER SLATS (PAIR)	
4 1	SCREW-416 FLANGED NUT	
3 1	SCREW-416 SHIMMED BALL	
2 2	SCREW-416 SPRING SPACER	
1 1	SCREW-416 ROLLER SHUNT	

CHECKED BY: _____ DATE: _____ DESIGNED BY: _____ DATE: _____ DRAWN BY: _____ DATE: _____ APPROVED BY: _____ DATE: _____	TITLE: NON-STEERING ROLLER ASSEMBLY, R.H. PART NO: 1-023-D-405 REV: 1 DATE: 10/27/51
--	---