

STAT

26 August 1966

Dear Will:

In response to your phone call to Mr. P on Friday, 26 August, we are enclosing herewith one print each of the drawings discussed. We hope that these will provide the necessary information.

RC:es

Rock

Encs. (4 prints)

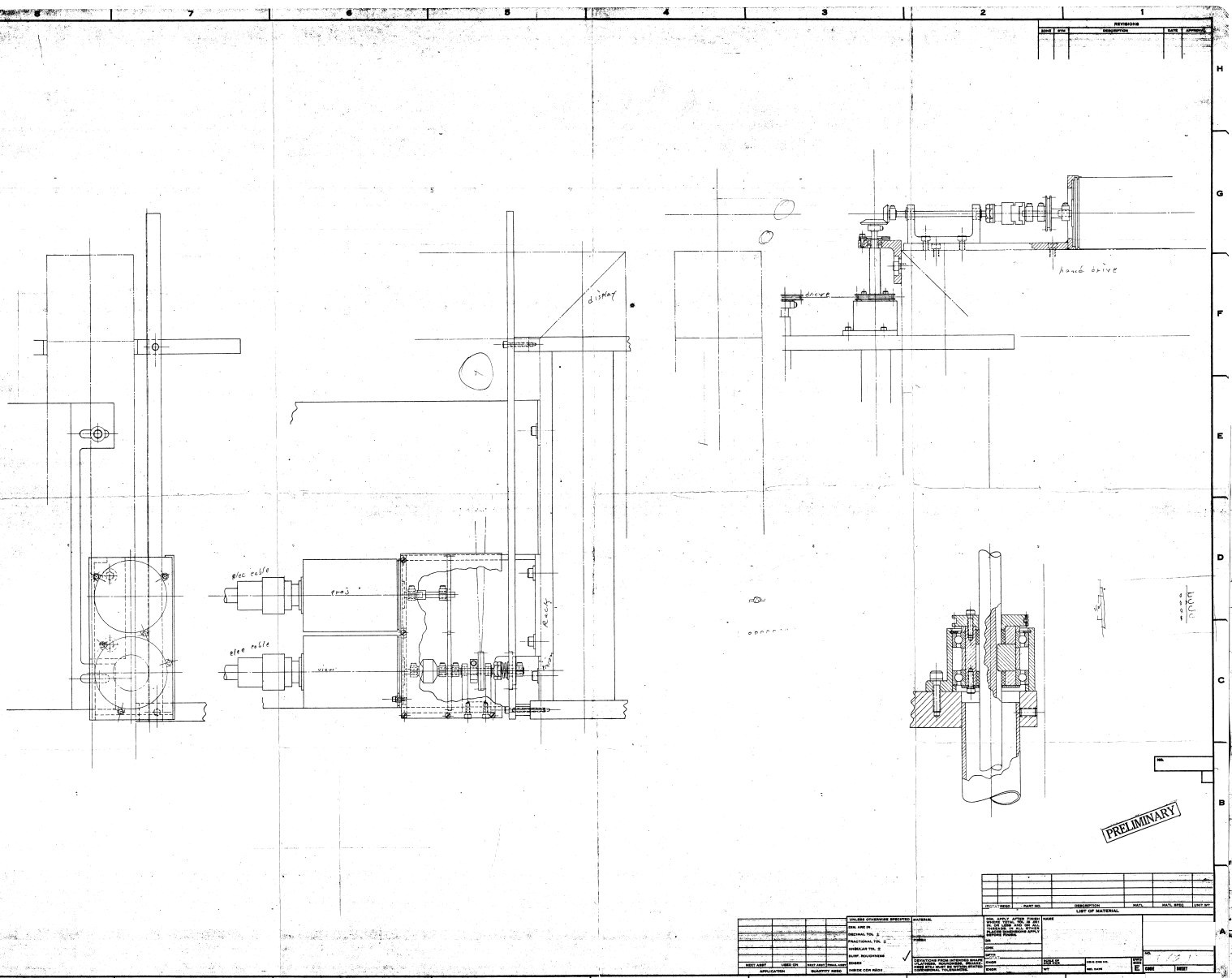
Page 1 of 1

~~7044~~ 44

PAR — 243

de Havillands

Declassified in Part - Sanitized Copy Approved for Release 2013/04/17 : CIA-RDP78B0475A000000010003-4

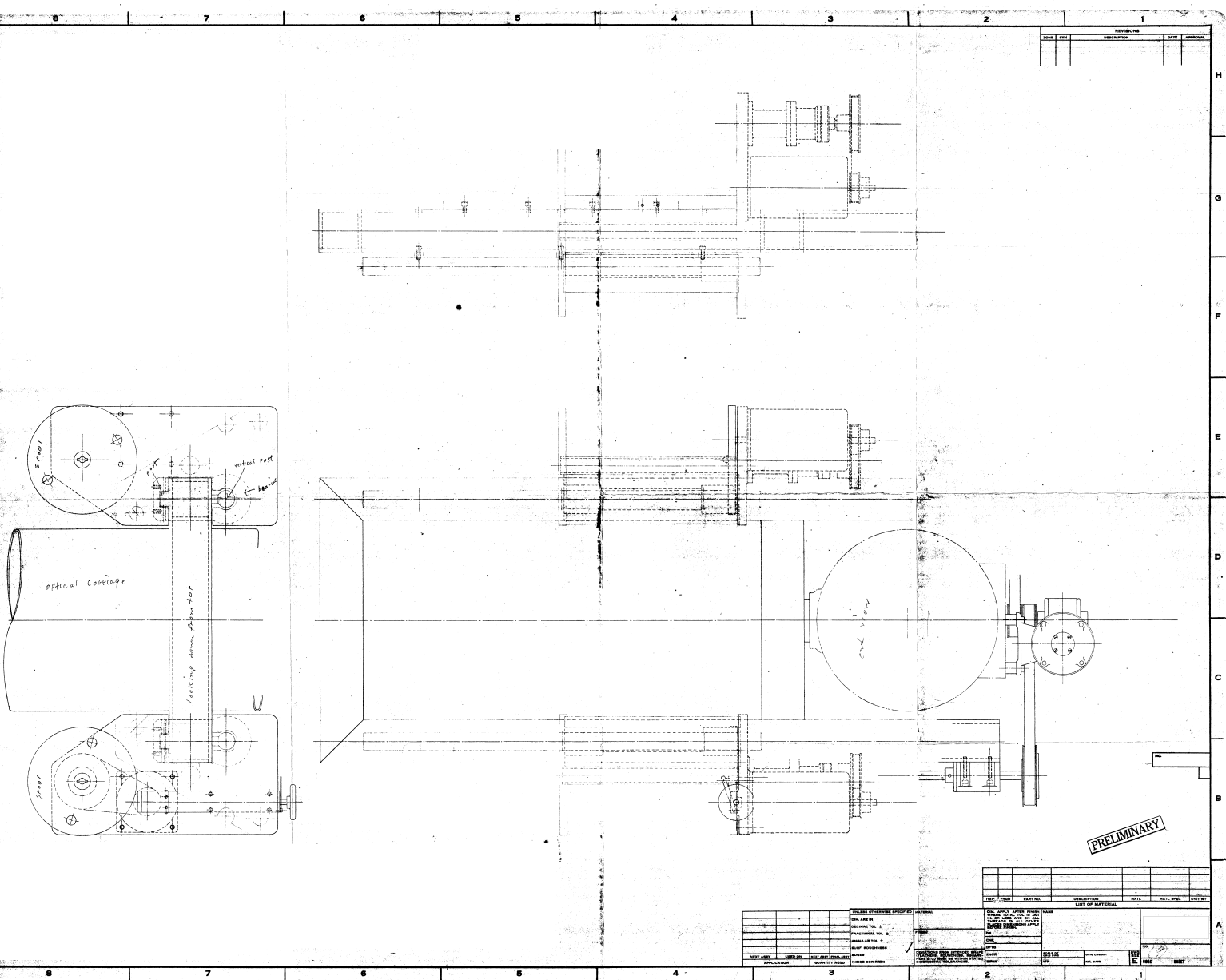


REVISIONS			
NO.	DATE	DESCRIPTION	BY

TITLE		DATE		BY	

APPLICATOR		QUANTITY USED		PRICE PER UNIT	

Declassified in Part - Sanitized Copy Approved for Release 2013/04/17 : CIA-RDP78B0475A000000010003-4

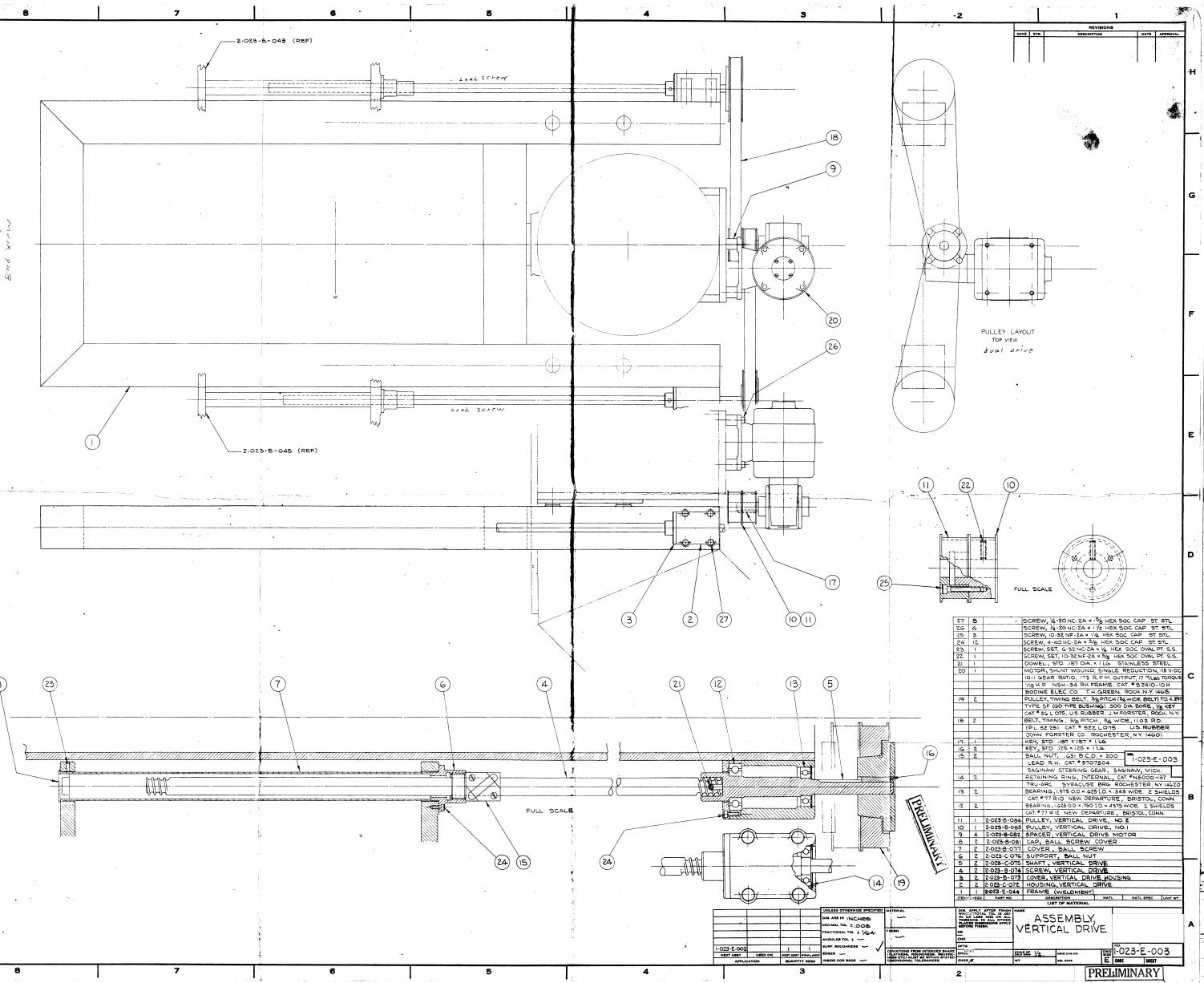


REVISIONS			
NO.	DATE	DESCRIPTION	BY

REV.	DATE	BY	APP.	DESCRIPTION

NO.	QTY.	DESCRIPTION	UNIT

NO.	QTY.	DESCRIPTION	UNIT



REVISIONS			
NO.	DATE	DESCRIPTION	BY

PULLEY LAYOUT
TOP VIEW
Dual Drive

FULL SCALE

27	2	SCREW, 6-32 X 1/2 IN. DIA. X 1/8 IN. DIA. CAP. ST. STL.
26	4	SCREW, 6-32 X 1/2 IN. DIA. X 1/8 IN. DIA. CAP. ST. STL.
25	3	SCREW, 6-32 X 1/2 IN. DIA. X 1/8 IN. DIA. CAP. ST. STL.
24	15	SCREW, 6-32 X 1/2 IN. DIA. X 1/8 IN. DIA. CAP. ST. STL.
23	1	SCREW, SET. 6-32 X 1/2 IN. DIA. X 1/8 IN. DIA. CAP. ST. STL.
22	1	SCREW, SET. 10-32 X 1/2 IN. DIA. X 1/8 IN. DIA. CAP. ST. STL.
21	1	DOWEL, STD. 1/8 IN. DIA. X 1/4 IN. STAINLESS STEEL
20	1	MOTOR, QUART-WAVELENGTH SHAFT REDUCTION, 18:1 GEAR RATIO, 1/8 IN. DIA. X 1/4 IN. DIA. X 1/8 IN. DIA. CAP. ST. STL.
19	2	PULLEY, TUNGSTEN CARBIDE, 1/2 IN. DIA. X 1/4 IN. DIA. X 1/8 IN. DIA. CAP. ST. STL.
18	2	BEARING, 1/8 IN. DIA. X 1/4 IN. DIA. X 1/8 IN. DIA. CAP. ST. STL.
17	1	KEY, STD. 1/8 X 1/8 X 1/4
16	2	KEY, STD. 1/8 X 1/8 X 1/4
15	2	BALL NUT, 3/8 IN. DIA. X 1/4 IN. DIA. X 1/8 IN. DIA. CAP. ST. STL.
14	2	LEAD SCREW, 3/8 IN. DIA. X 1/4 IN. DIA. X 1/8 IN. DIA. CAP. ST. STL.
13	2	RETAINING RING, INTERNAL, 3/8 IN. DIA. X 1/4 IN. DIA. X 1/8 IN. DIA. CAP. ST. STL.
12	2	BEARING, 1/8 IN. DIA. X 1/4 IN. DIA. X 1/8 IN. DIA. CAP. ST. STL.
11	1	SCREW, 6-32 X 1/2 IN. DIA. X 1/8 IN. DIA. CAP. ST. STL.
10	1	SCREW, 6-32 X 1/2 IN. DIA. X 1/8 IN. DIA. CAP. ST. STL.
9	4	SPACER, VERTICAL DRIVE MOTOR
8	2	SCREW, 6-32 X 1/2 IN. DIA. X 1/8 IN. DIA. CAP. ST. STL.
7	2	SCREW, 6-32 X 1/2 IN. DIA. X 1/8 IN. DIA. CAP. ST. STL.
6	2	SCREW, 6-32 X 1/2 IN. DIA. X 1/8 IN. DIA. CAP. ST. STL.
5	2	SCREW, 6-32 X 1/2 IN. DIA. X 1/8 IN. DIA. CAP. ST. STL.
4	2	SCREW, 6-32 X 1/2 IN. DIA. X 1/8 IN. DIA. CAP. ST. STL.
3	2	SCREW, 6-32 X 1/2 IN. DIA. X 1/8 IN. DIA. CAP. ST. STL.
2	1	SCREW, 6-32 X 1/2 IN. DIA. X 1/8 IN. DIA. CAP. ST. STL.

ASSEMBLY VERTICAL DRIVE

023-E-003

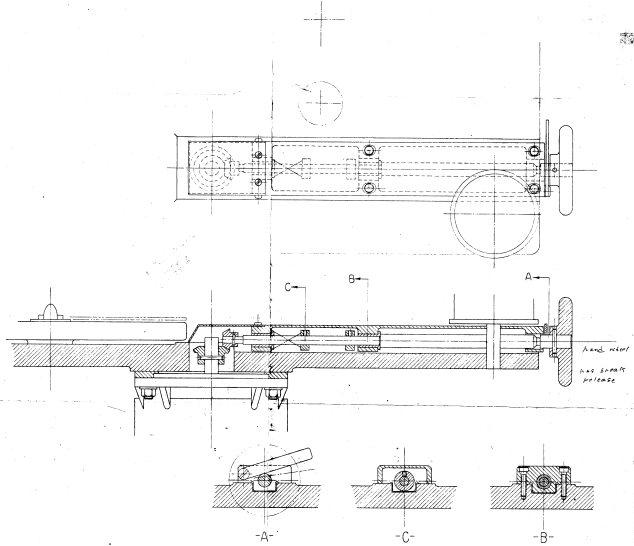
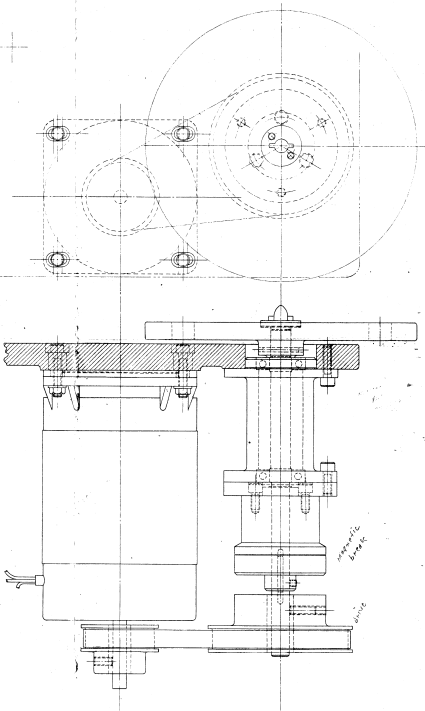
PRELIMINARY

DATE: 1/20/54

BY: J. J. ...

APP. ...

REVISIONS ...



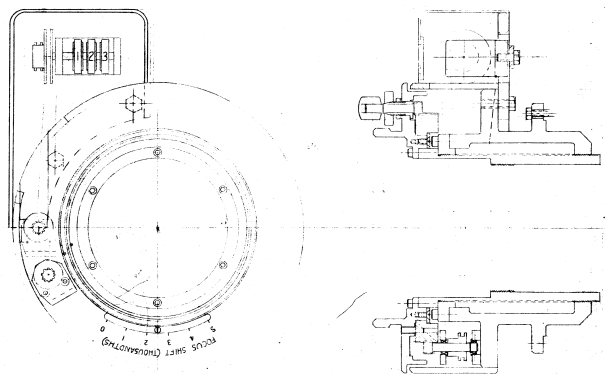
PRELIMINARY

REV.	DATE	DESCRIPTION	BY	CHECKED

NO.	QUANTITY	DESCRIPTION	UNIT

NO.	QUANTITY	DESCRIPTION	UNIT

REVISIONS				
LINE	BY	DESCRIPTION	DATE	APPROVAL



032
023 6.024

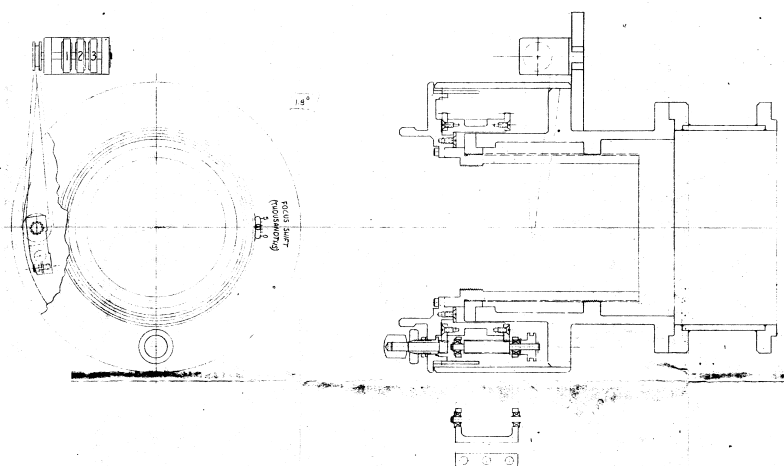
PRELIMINARY

ITEM	REQD	PART NO.	DESCRIPTION	MATL.	MATL. QTY.	UNIT WT.

UNLESS OTHERWISE SPECIFIED	MATERIAL	DIM. APPLY AFTER FINISH	NAME
DIM. ARE IN	FINISH	UNLESS OTHERWISE SPECIFIED	31,48 6 77 LENS
DECIMAL TOL. ±		PLACEMENT AND ORIENT.	BARREL ASSY
FRACTIONAL TOL. ±		BEFORE FINISH	
ANGULAR TOL. ±			
BUMP, ROUGHNESS			
GRADE			
INSIDE COR RADI			
NEW ASST	TEST ON	APPLY AND FINISH	
APPLICATION		QUANTITY REQD	

REVISIONS			
NO.	DATE	DESCRIPTION	APPROVED

182.1"



NO. 1093-D-021

PRELIMINARY

ITEM	QTY	PART NO.	DESCRIPTION	MATL.	MATL. SPEC.	UNIT WT.

APPLICATION	USED ON	QTY	REQD.	QTY	REQD.	QTY	REQD.	QTY	REQD.

FINISH	ROSB	OTHER	OTHER	OTHER	OTHER

ITEM	QTY	PART NO.	DESCRIPTION	MATL.	MATL. SPEC.	UNIT WT.

1093-D-021



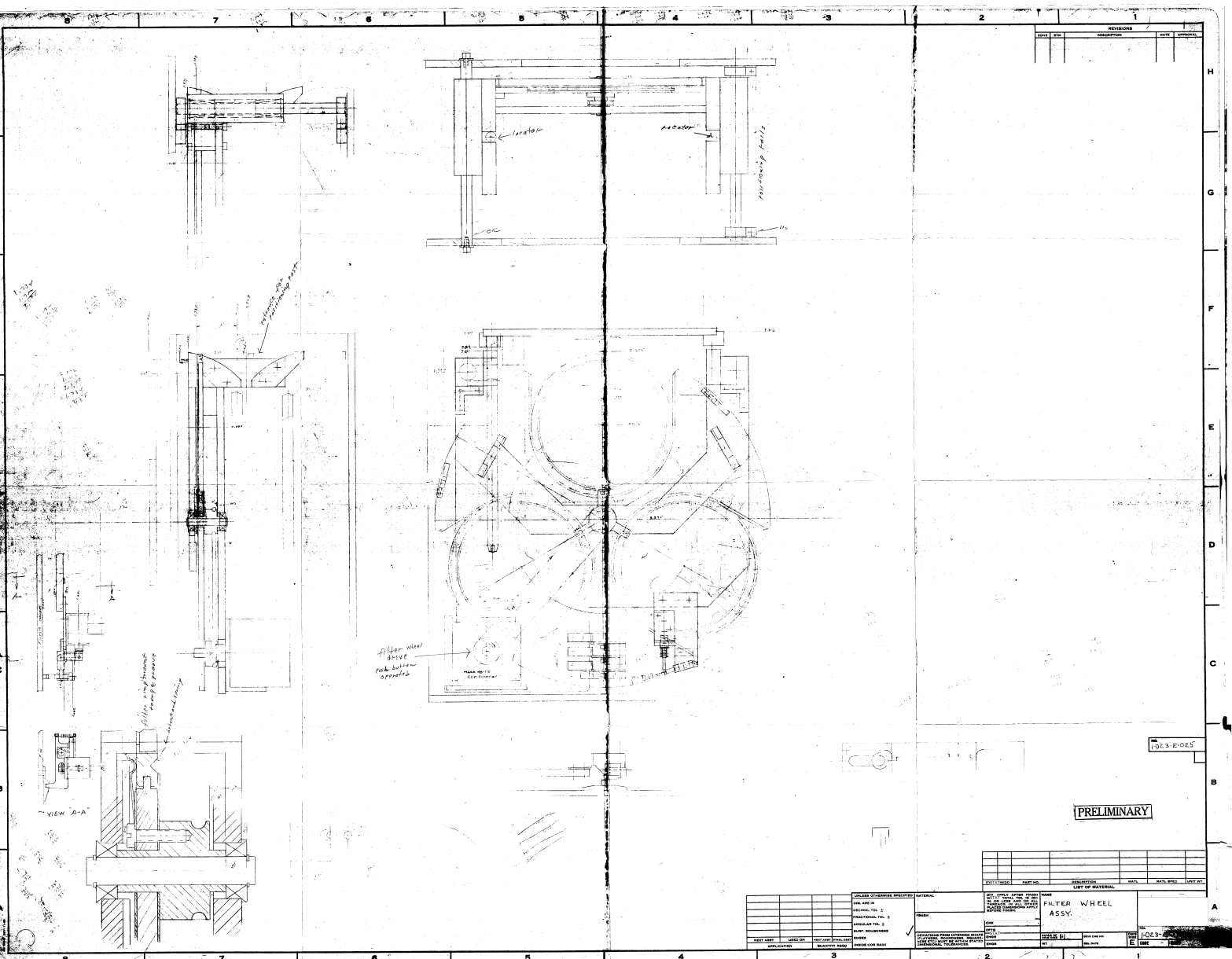
loading from opposite side

Auxiliary Lens part

LENS R44P ASSY
I-237-E-901

PRELIMINARY

4301 11/20/88



REVISIONS	
NO.	DESCRIPTION

102-3-D-025

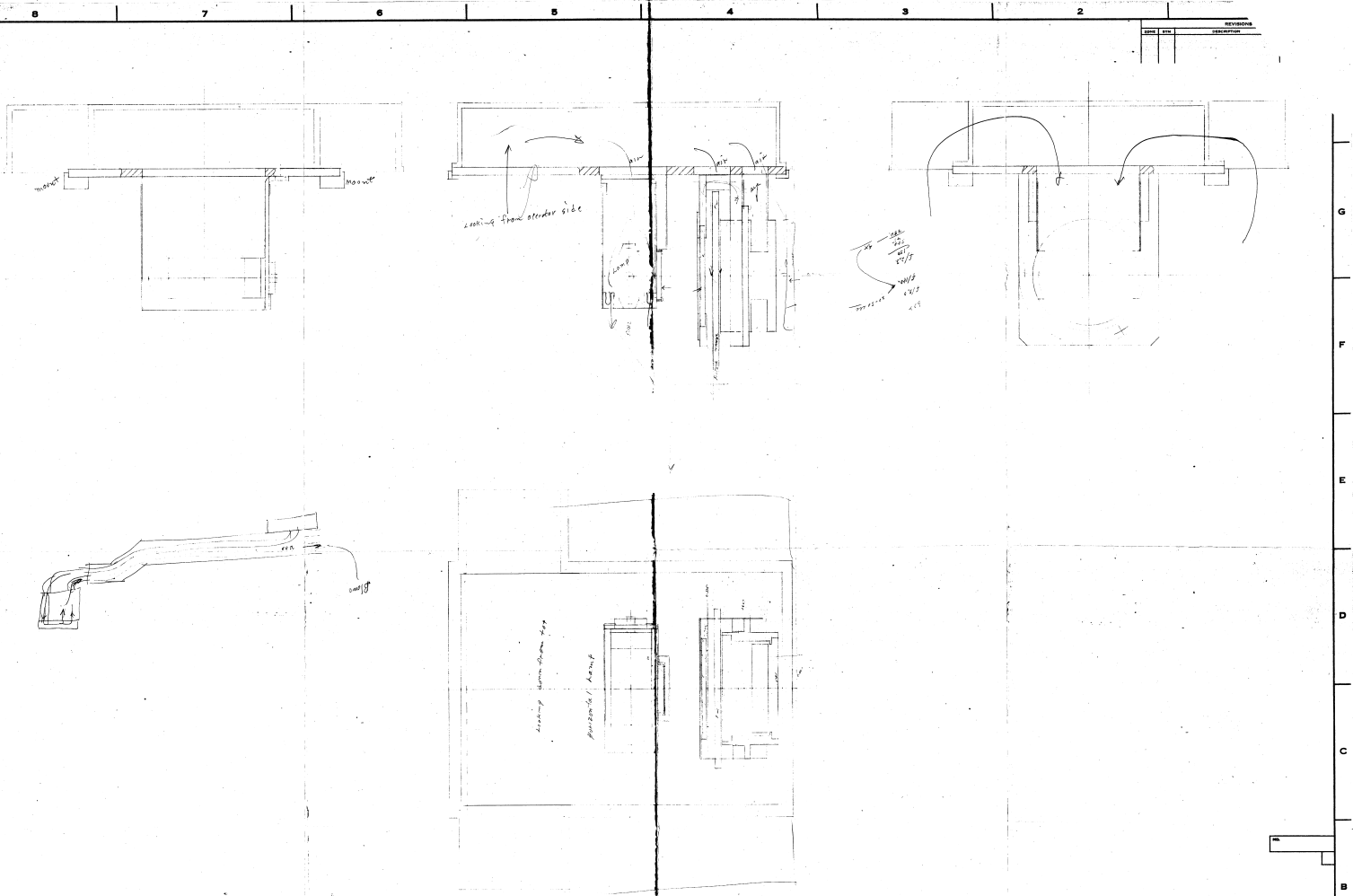
PRELIMINARY

LIST OF MATERIAL	
QTY	DESCRIPTION

SYMBOLS	
SYMBOL	DESCRIPTION

TITLE	
NO.	DESCRIPTION

DATE	
DATE	DESCRIPTION



PRELIMINARY

COND ASSY
3" F/S

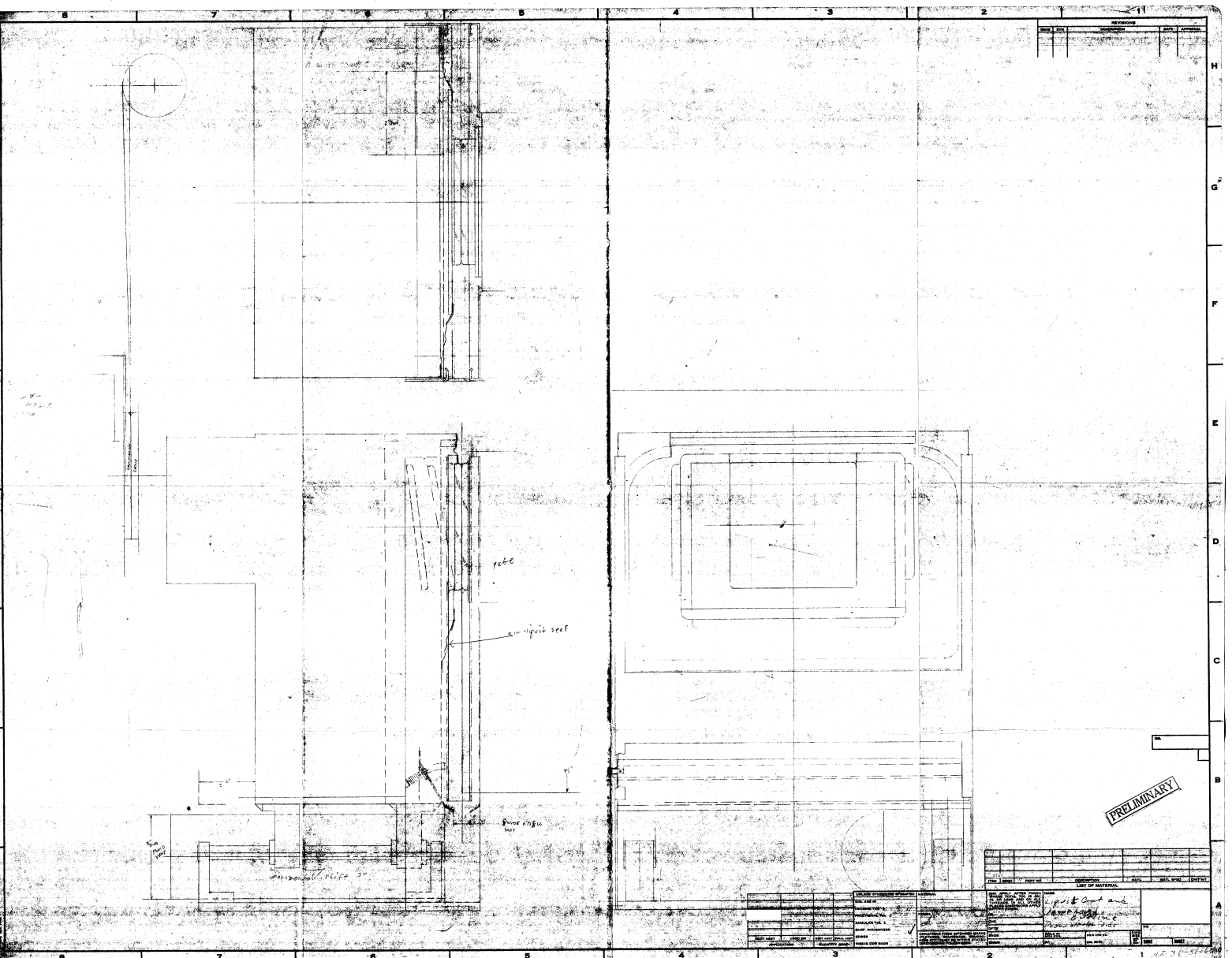
ITEM	QTY	DESCRIPTION	REVISION

ITEM	QTY	DESCRIPTION	REVISION

COND ASSY
3" F/S

REVISION	DATE	BY	APP.	DESCRIPTION
1				
2				

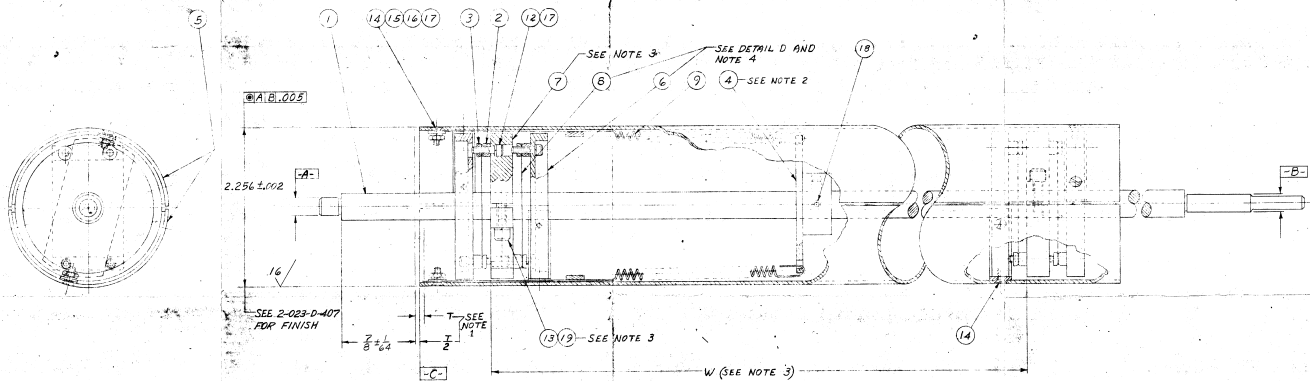
1-023-E-02B



NOTES

- 1.0 FULL TRAVEL OF SLATS
- 2.0 ITEM 4 IS TO BE LOCATED ON SHAFT (1) SO THAT WHEN ASSEMBLY IS VERTICAL THE SLATS (5) WILL BE SUSPENDED BY EXTENSION SPRINGS (9) WITH THEIR ENDS APPROXIMATELY AT C.
- 2.1 AFTER ASSEMBLY IS COMPLETED THE EXTENSION SPRINGS (9) ARE TO BE ADJUSTED AT ITEMS 14 SO AS TO CAUSE ENDS OF SLATS (5) TO BE SUSPENDED EXACTLY AT C.
- 2.2 AFTER FINAL ADJUSTMENT THE SPRING WIRE (9) IS TO BE BENT AROUND SCREW (14) AND SECURELY CLAMPED UNDER WASHER (16). WIRE MUST NOT EXTEND BEYOND END OF SLATS (5). EXCESS WIRE MAY BE CUT OFF.

- 3.0 ITEMS 7 ARE TO BE POSITIONED ON SHAFT WITH CLAMPING SCREWS (8) AS SHOWN.
- 3.1 DIMENSION 'W' TO BE SUCH AS TO ALLOW MAX. TRAVEL OF SLATS.
- 4.0 CONCENTRICITY MUST BE MAINTAINED BETWEEN ITEMS 6 AND ITEM 1, DURING INSTALLATION OF ITEMS 6. SEE ASSEMBLY DETAIL 'D'.



DETAIL D

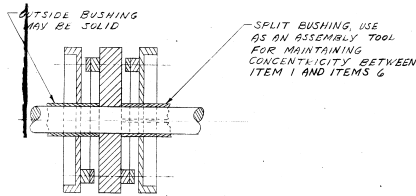
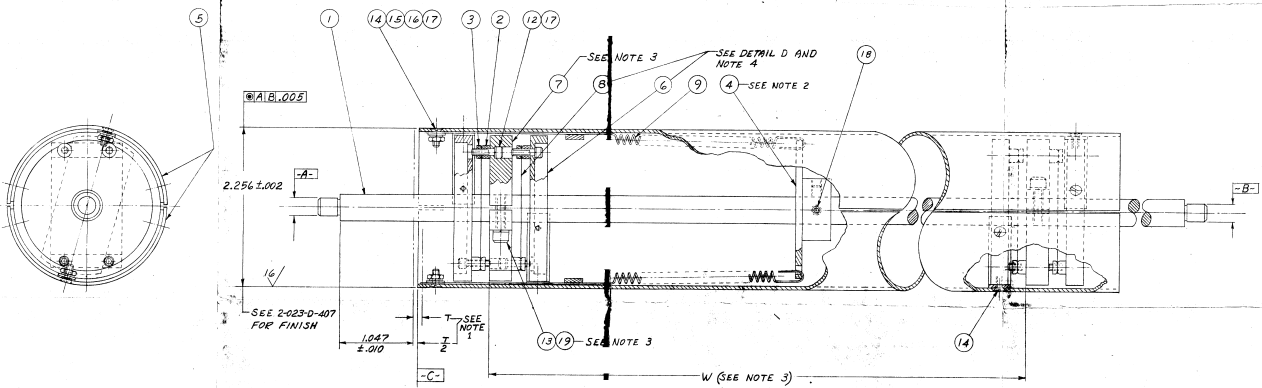
19	2	WASHER, LOCK SPRING NO. 6 AM. STD. LIGHT SST.
18	2	SST SCREW, NO. 4-32, 1/2 L. HEX SOCKET, ANGLE TYP. NO. 600 SST. CAT. NO. BE 3-0, DIC DESIGN CORP. EAST ROCKAWAY, NEW YORK (OR EQUAL)
17	16	WASHER, LOCK SPRING, NO. 2, AM. STD. LIGHT, SST.
16	2	WASHER, PLAIN, AM. STD., 3/32 I.D. 1/4 O.D., .020 THK, SST.
15	2	NUT, HEX. MACH. SCREW, DOUBLE QUANTER, NO. 2-56 UNC-2A 1/8 L. SST.
14	14	SCREW, MACHINE, NO. 2-56 UNC-2A 1/4 SLETTED FLAT 1/4 L. SST.
13	2	SCREW, CAP 1960 SERIES, NO. 6-32 UNC-2A 1/2 L. HEX. SDC. NO. SST.
12	16	SCREW, CAP 1960 SERIES, NO. 2-56 UNC-2A 1/4 L. HEX. SDC. NO. SST.

9	2	2-023-D-416 EXTENSION SPRING
8	2	2-023-D-416 FLAT SPRING
7	2	2-592-D-458 FIXED FLANGE
6	2	2-023-D-416 FLOATING DISK
5	1	1-168-330-460 ROLLER SLATS (PAIR)
4	1	2-023-D-372 FLANGED HUB
3	2	2-023-D-428 FORKED DISK
2	2	2-023-D-372 SPRING SPACER
1	1	2-023-D-372 ROLLER SHAFT

DESIGNER	DATE	SCALE	APP. NO.
CHECKED	DATE	SCALE	APP. NO.
APPROVED	DATE	SCALE	APP. NO.
NON-STEERING ROLLER ASSEMBLY R.H.			
DATE 2/1		REV. 1	7-023-D-405

NOTES

- 1.0 $T =$ FULL TRAVEL OF SLATS
- 2.0 ITEM 4 IS TO BE LOCATED ON SHAFT (1) SO THAT WHEN ASSEMBLY IS VERTICAL THE SLATS (5) WILL BE SUSPENDED BY EXTENSION SPRINGS (9) WITH THEIR ENDS APPROXIMATELY AT C.
- 2.1 AFTER ASSEMBLY IS COMPLETED THE EXTENSION SPRINGS (9) ARE TO BE ADJUSTED, AT ITEMS 14, SO AS TO CAUSE ENDS OF SLATS (5) TO BE SUSPENDED EXACTLY AT C.
- 2.2 AFTER FINAL ADJUSTMENT THE SPRING WIRE IS TO BE BENT AROUND SCREW (12) AND SECURELY CLAMPED UNDER WASHER (13). WIRE MUST NOT EXTEND PAST END OF SLATS (5) EXCESS WIRE MAY BE CUT OFF.
- 3.0 ITEMS 7 ARE TO BE POSITIONED ON SHAFT WITH CLAMPING SCREWS 180° APART
- 3.1 DIMENSION "W" TO BE SUCH AS TO ALLOW MAX. TRAVEL OF SLATS.
- 4.0 CONCENTRICITY MUST BE MAINTAINED BETWEEN ITEMS 6 AND ITEM 1, DURING INSTALLATION OF ITEMS 6. SEE ASSEMBLY DETAIL D.



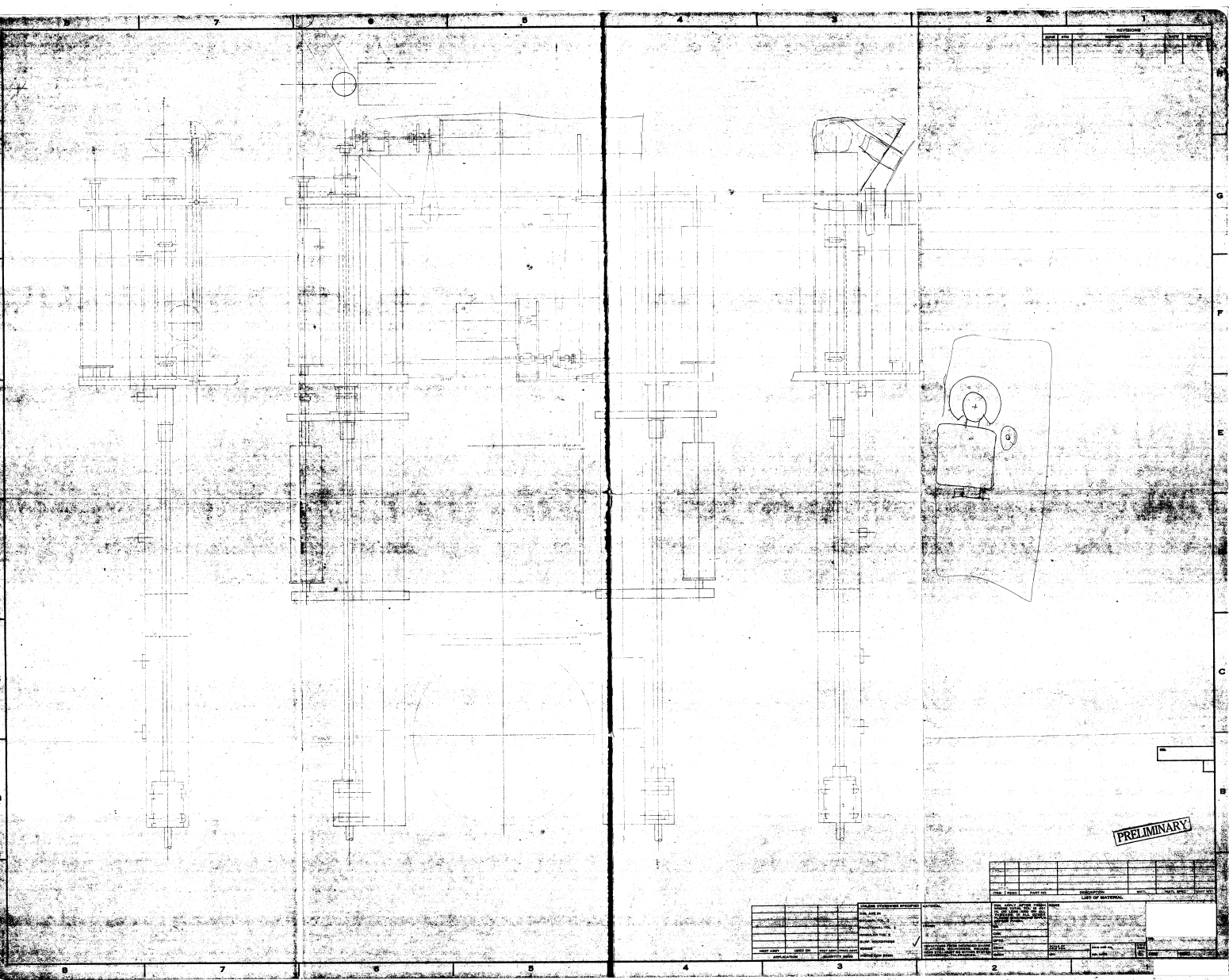
DETAIL D

19	2	WASHER, LOCK, SPRING, NO. 6 AM. STD. LIGHT, SST.
18	2	SET SCREW, NO. 1-39 X 1/32, HEX SOCKET, NILON TIP, NO. 800 SST. CAT. NO. BE-3-D, PIG DESIGN CORP. EAST ROCKAWAY, NEW YORK (OR EQUIV.)
17	18	WASHER, LOCK, SPRING, NO. 2, AM. STD. LIGHT, SST.
16	2	WASHER, FLAIN, AM. STD., 3/32 I.D. 1/4 O.D. X .020 THK, SST
15	2	NUT, HEX. MACH. SCREW, DOUBLE END, 3/16 SST. SEE 2-023-D-406
14	14	SCREW, MACHINE, NO. 2-56 UNC-2A X 1/4, SLOTTED FLAT, HD, SST. SEE 2-023-D-406
13	2	SCREW, CAR. 1960 SERIES, NO. 6-32 UNC X 1/2, HEX. SOC. NO. SST
12	16	SCREW, CAR. 1960 SERIES, NO. 2-56 UNC X 3/16, HEX. SOC. NO. SST

9	2	2-023-B-416 EXTENSION SPRING
8	4	2-023-B-410 FLAT SPRING
7	2	2-023-C-459 FIXED FLANGE
6	4	2-023-C-458 FLOATING DISK
5	1	2-023-C-457 ROLLER SLATS (PAIR)
4	1	2-023-B-331 FLANGED HUB
3	6	2-023-C-456 INCREASED BORE
2	8	2-023-A-177 SPRING SPACER
1	1	2-023-B-344 ROLLER SHAFT

<p>NON-STEERING ROLLER ASSEMBLY, L.H.</p> <p>DATE: 2/21</p> <p>BY: [Signature]</p>		<p>2-023-D-406</p> <p>REV. 1</p>
--	--	----------------------------------

Declassified in Part - Sanitized Copy Approved for Release 2013/04/17 : CIA-RDP78B0475A00000003003-4

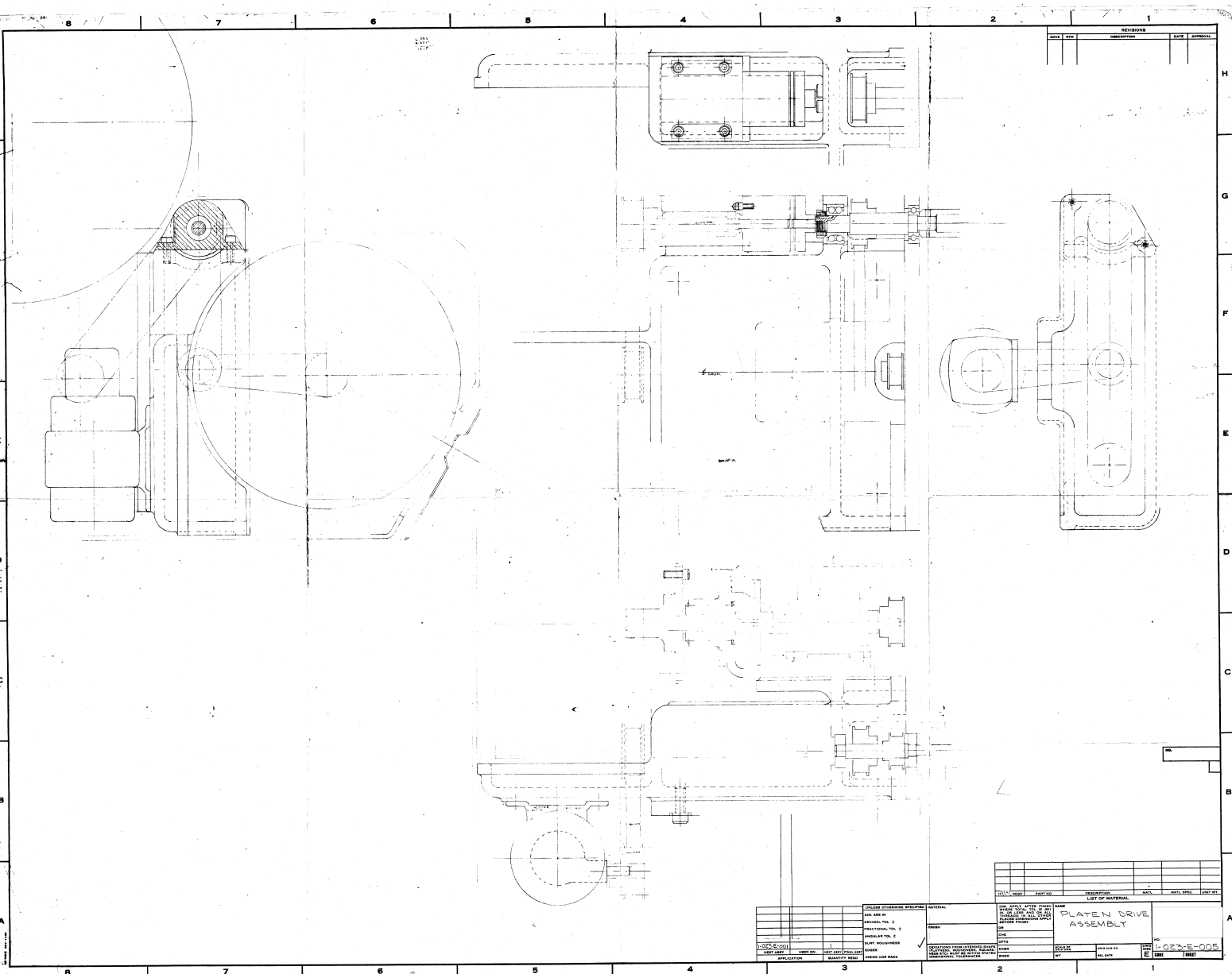


PRELIMINARY

DESIGN APPROVAL		DATE	
DESIGNED BY	DATE	APPROVED BY	DATE
CHECKED BY	DATE	DATE	DATE
TITLE		SCALE	
PART NO.		SHEET NO.	
DRAWING NO.		REV.	
PROJECT NO.		DATE	
DRAWN BY		DATE	
CHECKED BY		DATE	
APPROVED BY		DATE	
DATE		DATE	

Declassified in Part - Sanitized Copy Approved for Release 2013/04/17 : CIA-RDP78B0475A00000003003-4

Declassified in Part - Sanitized Copy Approved for Release 2013/04/17 : CIA-RDP78B0475A000000030003-4

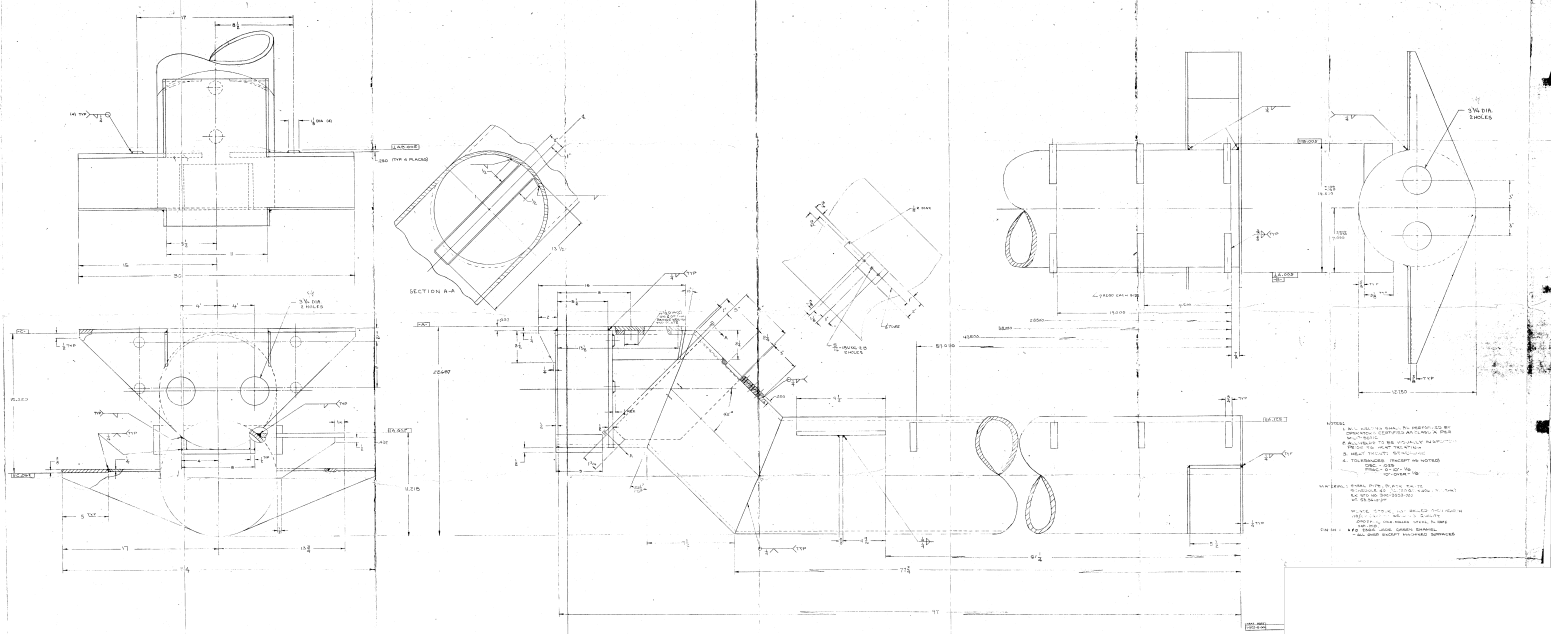


REVISIONS		
NO.	DATE	DESCRIPTION

LIST OF MATERIAL	
QTY.	DESCRIPTION

MATERIAL	
QTY.	DESCRIPTION

PLATE DRIVE ASSEMBLY
1023-E-005
E 20



FRIDAY

1967	APRIL							1967
S	M	T	W	T	F	S		
							1	
2	3	4	5	6	7	8		
9	10	11	12	13	14	15		
16	17	18	19	20	21	22		
²³ ₃₀	24	25	26	27	28	29		

7

APR. 1967

4-11-67

Drawing # 14
Frame, loaned
to

STAT



Log
WVF

4/7/67

97

FRI., APRIL 7, 1967

268

