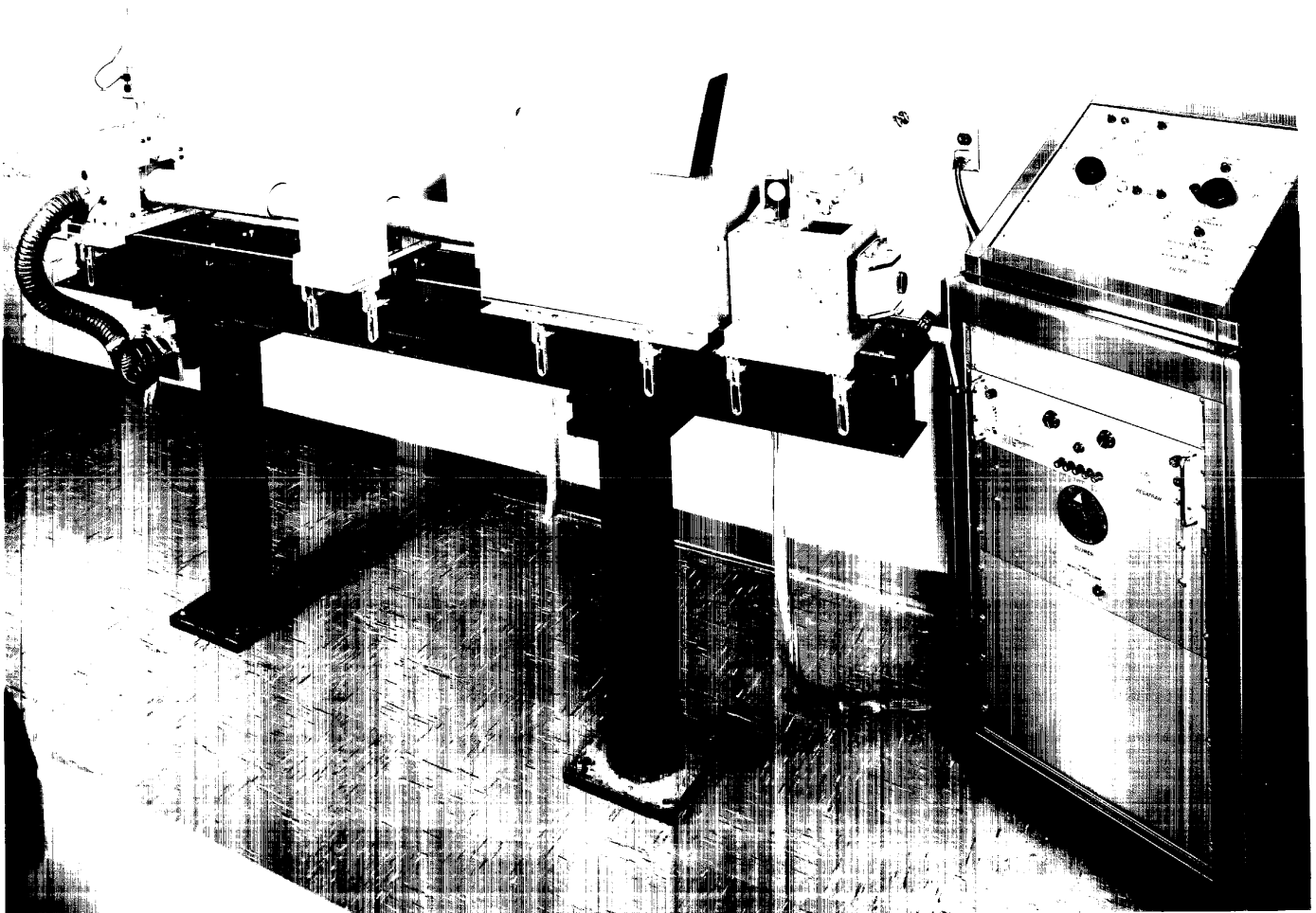


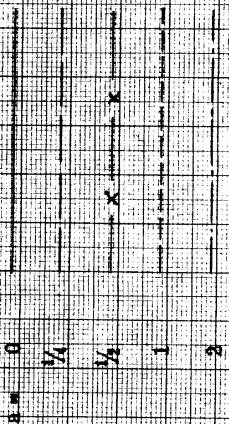
Approved For Release 2000/05/10 : CIA-RDP78B04747A003100010062-9



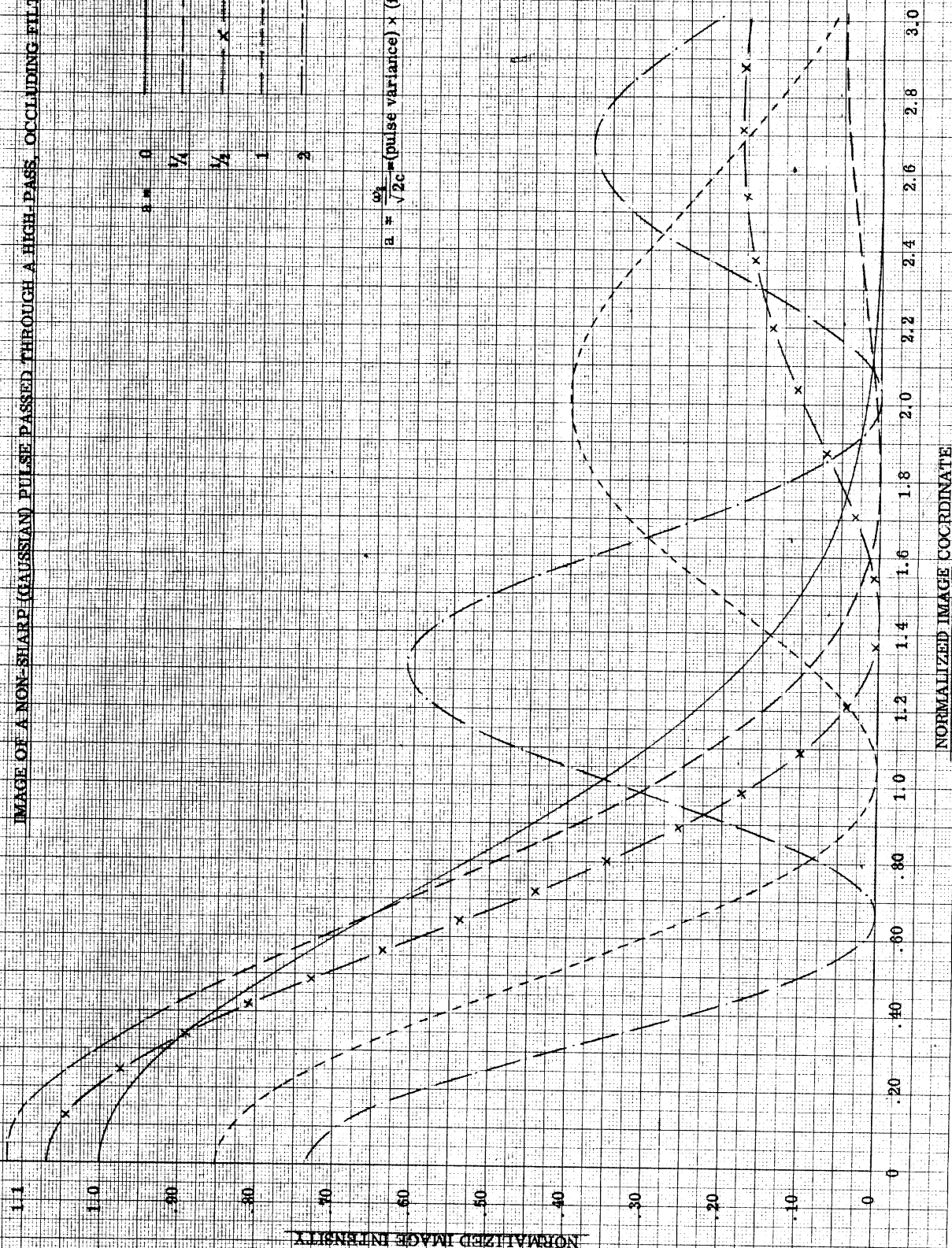
Approved For Release 2000/05/10 : CIA-RDP78B04747A003100010062-9

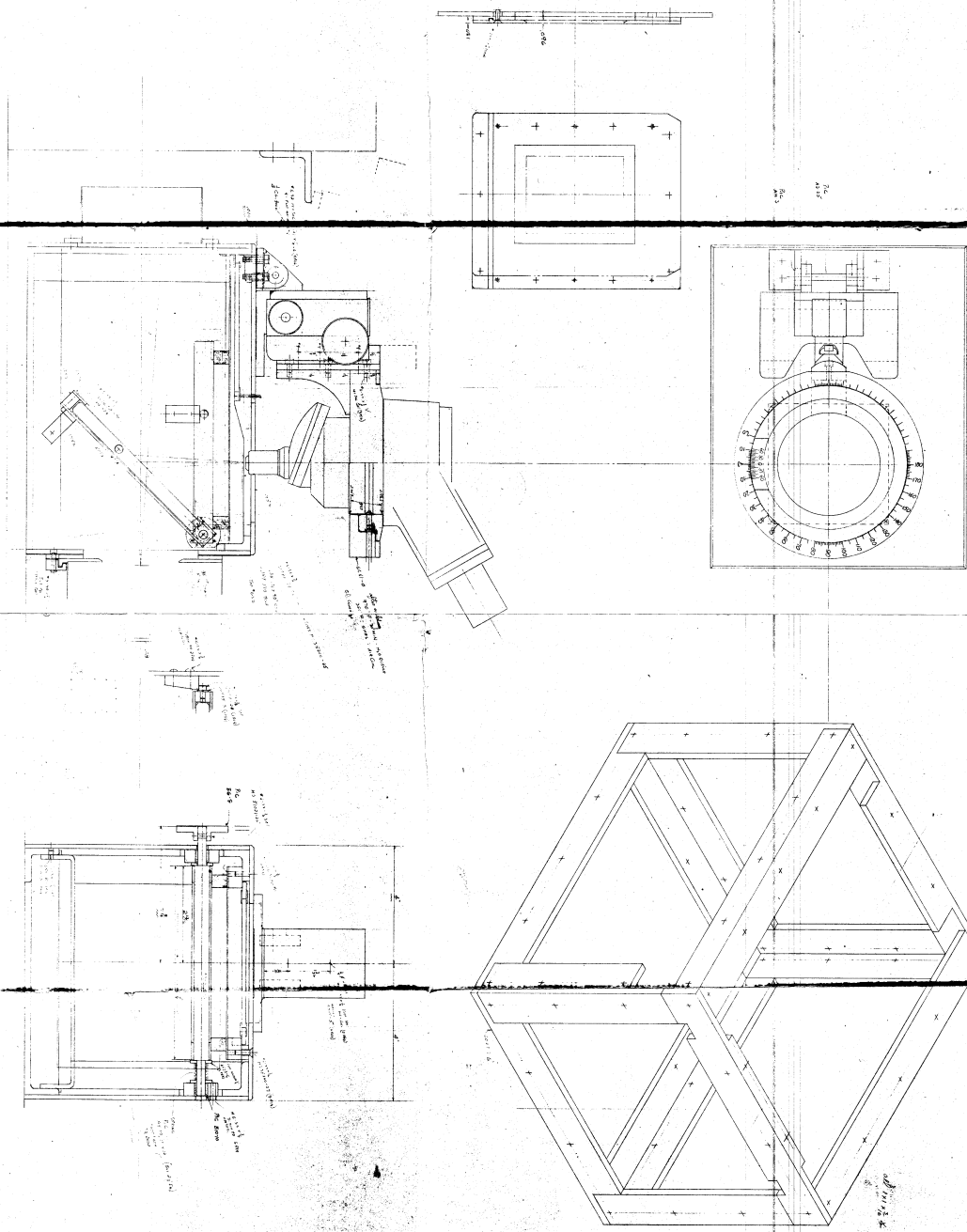
Image Enhancement Viewer - Itch

IMAGE OF A NON-SHARP (GAUSSIAN) PULSE PASSED THROUGH A HIGH-PASS, OCCCLUDING FILTER



$$\alpha = \frac{\omega}{\sqrt{2c}} = (\text{pulse variance}) \times (\text{filter cutoff freq.})$$





DATE	BY	CHKD	APP'D
1968	J		

NO.	DESCRIPTION	DATE	BY	CHKD	APP'D
1					
2					
3					
4					
5					
6					
7					
8					
9					
10					
11					
12					
13					
14					
15					
16					
17					
18					
19					
20					
21					
22					
23					
24					
25					
26					
27					
28					
29					
30					
31					
32					
33					
34					
35					
36					
37					
38					
39					
40					
41					
42					
43					
44					
45					
46					
47					
48					
49					
50					
51					
52					
53					
54					
55					
56					
57					
58					
59					
60					
61					
62					
63					
64					
65					
66					
67					
68					
69					
70					
71					
72					
73					
74					
75					
76					
77					
78					
79					
80					
81					
82					
83					
84					
85					
86					
87					
88					
89					
90					
91					
92					
93					
94					
95					
96					
97					
98					
99					
100					

REVISION LAYOUT

DATE: 1968 BY: J CHKD: APP'D:

NO. DESCRIPTION DATE BY CHKD APP'D

1. Initial Design J

2. Final Design J

3. Final Design J

4. Final Design J

5. Final Design J

6. Final Design J

7. Final Design J

8. Final Design J

9. Final Design J

10. Final Design J

11. Final Design J

12. Final Design J

13. Final Design J

14. Final Design J

15. Final Design J

16. Final Design J

17. Final Design J

18. Final Design J

19. Final Design J

20. Final Design J

21. Final Design J

22. Final Design J

23. Final Design J

24. Final Design J

25. Final Design J

26. Final Design J

27. Final Design J

28. Final Design J

29. Final Design J

30. Final Design J

31. Final Design J

32. Final Design J

33. Final Design J

34. Final Design J

35. Final Design J

36. Final Design J

37. Final Design J

38. Final Design J

39. Final Design J

40. Final Design J

41. Final Design J

42. Final Design J

43. Final Design J

44. Final Design J

45. Final Design J

46. Final Design J

47. Final Design J

48. Final Design J

49. Final Design J

50. Final Design J

51. Final Design J

52. Final Design J

53. Final Design J

54. Final Design J

55. Final Design J

56. Final Design J

57. Final Design J

58. Final Design J

59. Final Design J

60. Final Design J

61. Final Design J

62. Final Design J

63. Final Design J

64. Final Design J

65. Final Design J

66. Final Design J

67. Final Design J

68. Final Design J

69. Final Design J

70. Final Design J

71. Final Design J

72. Final Design J

73. Final Design J

74. Final Design J

75. Final Design J

76. Final Design J

77. Final Design J

78. Final Design J

79. Final Design J

80. Final Design J

81. Final Design J

82. Final Design J

83. Final Design J

84. Final Design J

85. Final Design J

86. Final Design J

87. Final Design J

88. Final Design J

89. Final Design J

90. Final Design J

91. Final Design J

92. Final Design J

93. Final Design J

94. Final Design J

95. Final Design J

96. Final Design J

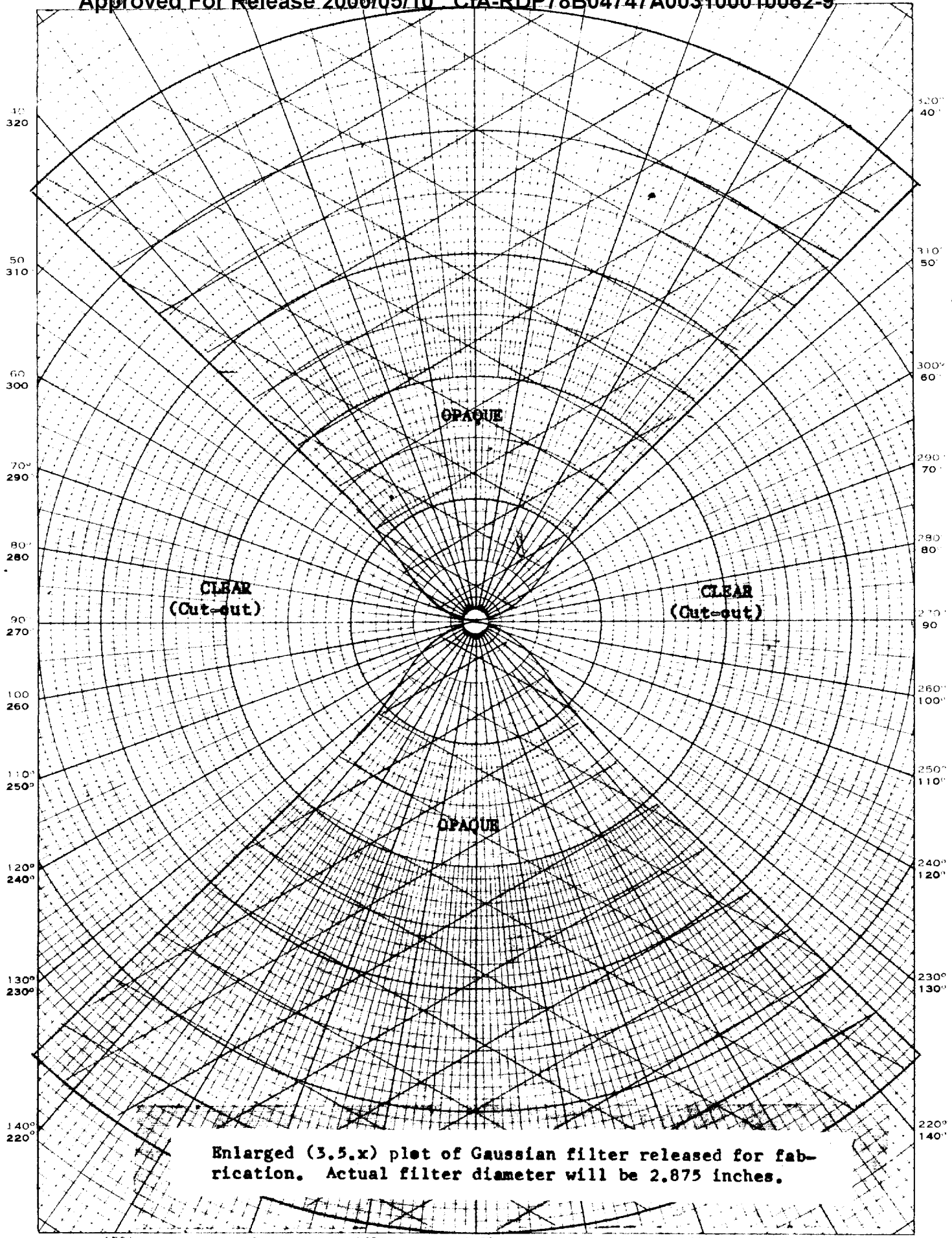
97. Final Design J

98. Final Design J

99. Final Design J

100. Final Design J

EUGENE DIETZGEN CO.
NEW HAVEN, CT, U.S.A.
NO. 340-P DIETZGEN GRAPH PAPER
POLAR CO-ORDINATE



Enlarged (3.5.x) plot of Gaussian filter released for fabrication. Actual filter diameter will be 2.875 inches.