

CONFIDENTIAL

25X1C

PHOTOGRAPHIC INTERPRETATION MEMORANDUM



**UNUSUAL BOATBUILDING
FACILITIES, HAIPHONG
NORTH VIETNAM**

NPIC/R-106/68
SEPTEMBER 1968

Declass Review, NIMA/DoD

GROUP 1 EXCLUDED FROM
AUTOMATIC DOWNGRADING
AND DECLASSIFICATION

25X1C

CONFIDENTIAL

201/118

WARNING

This document contains information affecting the national defense of the United States, within the meaning of Title 18, sections 793 and 794, of the U.S. Code, as amended. Its transmission or revelation of its contents to or receipt by an unauthorized person is prohibited by law.

CONFIDENTIAL

NPIC/R-106/68

NO FOREIGN DISSEM [REDACTED] Approved For Release 2000/06/30 : CIA-RDP78B04560A006400010034-1

25X1C

UNUSUAL BOATBUILDING FACILITIES
HAIPHONG, NORTH VIETNAM

There is increasing photographic evidence that the North Vietnamese have placed a high priority on building more barges and small boats in the Haiphong port complex to alleviate port congestion and to reduce vessel turnaround time in the crowded anchorages of the Cua Cam (River).

25X1D

Newly established and dispersed facilities, unconventional in nature, have appeared since [REDACTED]. Prior to that date, U.S. air strikes had inflicted substantial damage to several existing facilities, causing a significant curtailment of barge and boatbuilding activity in the city. With the advent of the bombing pause in March 1968 and the attendant rise in incoming merchant ships (now more than double that of [REDACTED]), the need for additional cargo-handling vessels is evident. Some of the destroyed or damaged facilities have been restored to a minimal operational capacity and the remaining undamaged facilities continue in full operation. 25X1D

Of the ten barge and five boatbuilding/assembly yards newly identified in Haiphong (Figure 1), seven are located inland without immediate access to water, necessitating some overland transport for launching. A typical assembly facility for prefabricated barge sections is shown in Figure 2. Noticeably void of any building, handling or launching facilities normal to such an installation, its only requisite appears to be a relatively open, flat area. In Figure 3, a similar facility for small boat construction is located on a back street with enough space for building materials, keel blocks, and completed units.

Although no estimate of construction rates and capacities can be derived from sparse photographic coverage, this production probably will contribute significantly to the port's present needs.

- 1 -

CONFIDENTIAL

25X1C

NO FOREIGN DISSEM [REDACTED]

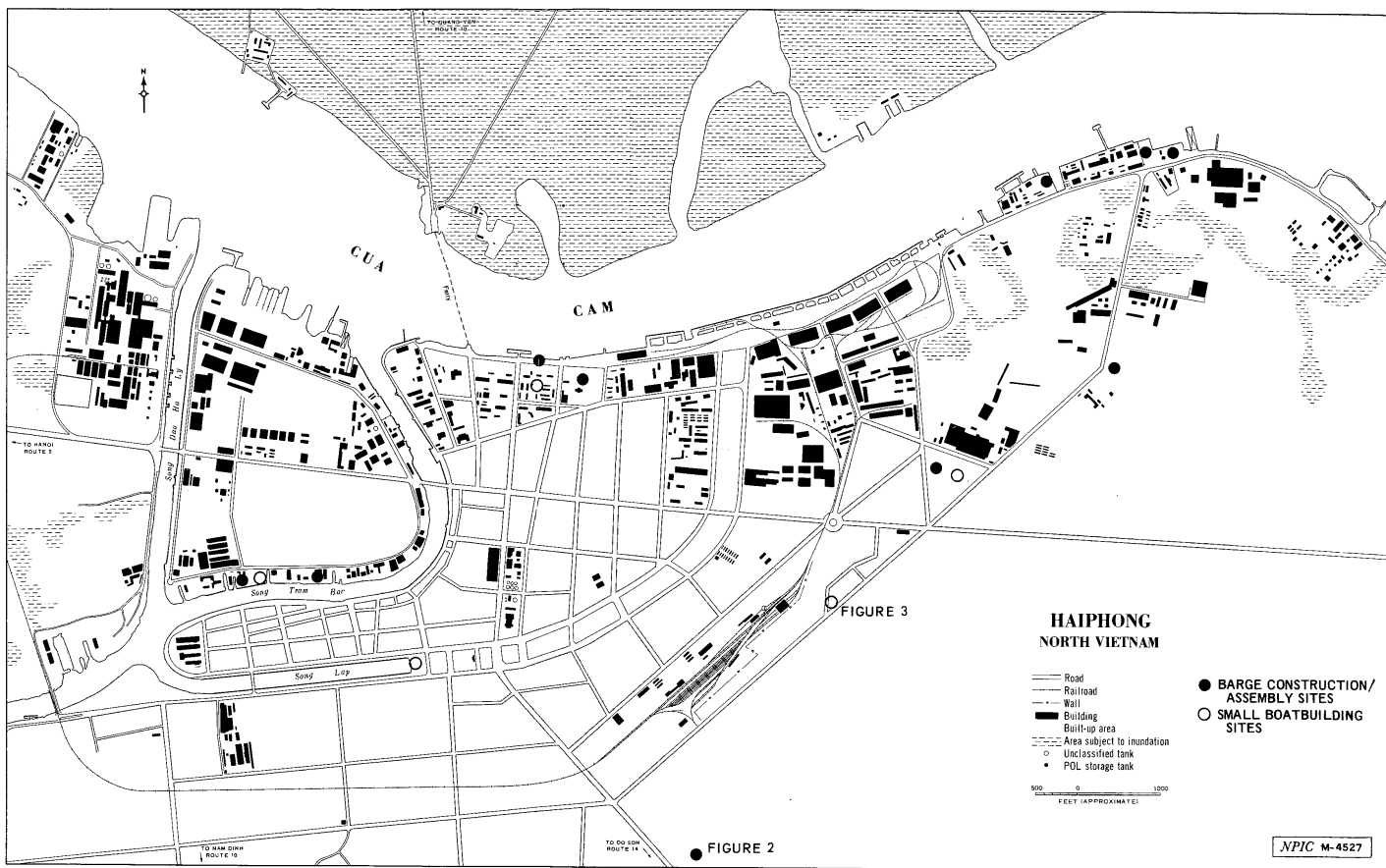


FIGURE 1. HAIPHONG PORT COMPLEX.

NO FOREIGN DISSEM [REDACTED]

25X1C



FIGURE 2. ASSEMBLY OF PREFABRICATED BARGE SECTIONS, HAIPHONG, NORTH VIETNAM.

25X1D

NO FOREIGN DISSEM [REDACTED]

25X1C

CONFIDENTIAL

NO FOREIGN DISSEM

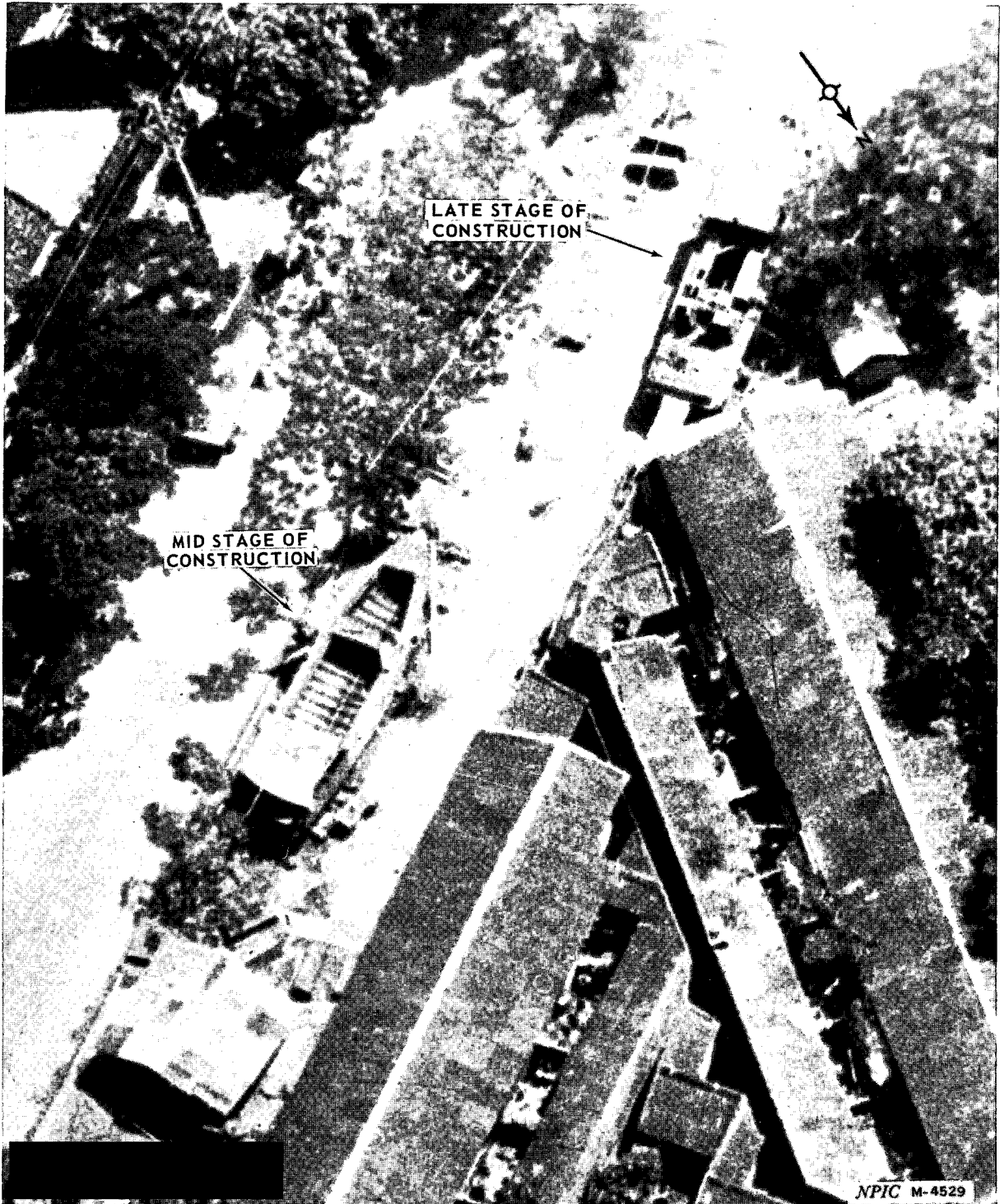


FIGURE 3. DISPERSED SMALL BOAT CONSTRUCTION, HAIPHONG, NORTH VIETNAM.

CONFIDENTIAL

NO FOREIGN DISSEM

25X1C

Approved For Release 2000/06/30 : CIA-RDP78B04560A006400010034-1

Approved For Release 2000/06/30 : CIA-RDP78B04560A006400010034-1