



25X1C



SOUTHEAST ASIA ACTIVITY REPORT

SELECTED TRANSPORTATION AND INFILTRATION COMPENDIUM 3-9 NOVEMBER 1966

NPIC/R-370/66
NOVEMBER 1966

SUMMARY NO 27

Declass Review By NIMA/DOD

25X1C





W A R N I N G

This document contains information affecting the national defense of the United States, within the meaning of Title 18, sections 793 and 794, of the U.S. Code, as amended. Its transmission or revelation of its contents to or receipt by an unauthorized person is prohibited by law.

05X1

Approved For Release 2005/04/28 : CIA-RDP78B04560A005600010041-2

Next 1 Page(s) In Document Exempt

Approved For Release 2005/04/28 : CIA-RDP78B04560A005600010041-2

CONFIDENTIAL

Approved For Release 2005/04/28 : CIA-RDP78B04560A005600010041-2

R-370/66

25X1C

PREFACE

This report is a summary of selected information on transportation and infiltration activity in Southeast Asia, primarily the Laotian Panhandle, as reported by NPIC during the period indicated on the cover. For a comprehensive study of road development in this area prior to 1 April 1966 see NPIC R-110/66, Communist Road Net Development in the Laotian Panhandle (CONFIDENTIAL/

25X1C

Items are numbered and arranged according to location from north to south. Annotated maps of varying scales have been included to assist the reader in locating the items. Each large-scale map depicts all motorable roads photographically confirmed by NPIC, unless otherwise indicated.

Missions, mission dates, frames, and NPIC cable and briefing board references are listed after each item, as appropriate.

25X1C

CONFIDENTIAL

Approved For Release 2005/04/28 : CIA-RDP78B04560A005600010041-2

~~CONFIDENTIAL~~

25X1C

CONTENTS

1. Vehicular Cable Bridge, Route 1A By-pass, North Vietnam
2. Railroad Ferry Slips, Viet Tri, North Vietnam
3. Road and Bridge Reconstruction, Route 911, Laos

REVIEW OF SUMMARIES 1 - 26

Synopsis of Intelligence Highlights

Listing of Contents

Index of Topics

25X1C

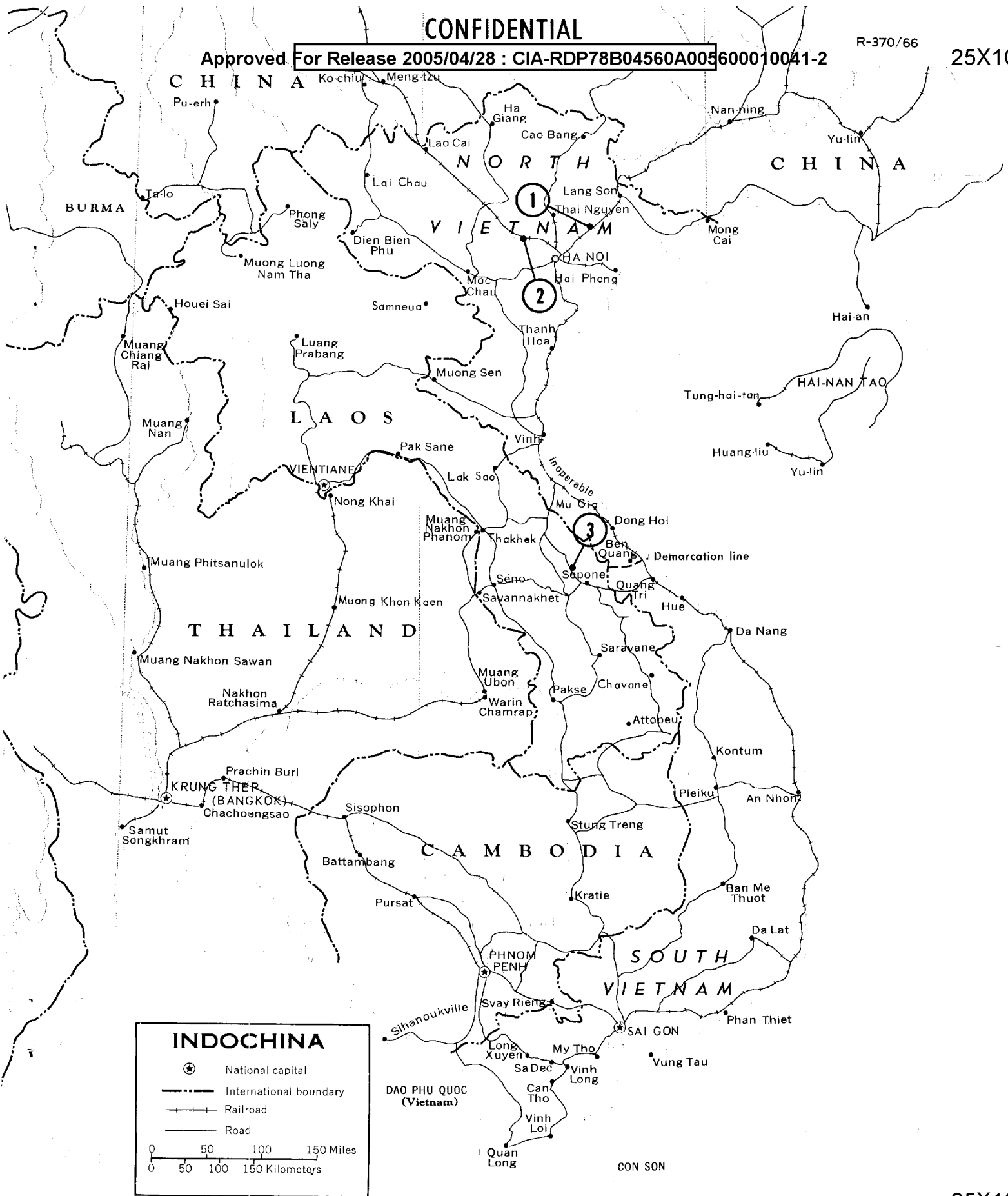
~~CONFIDENTIAL~~

CONFIDENTIAL

R-370/66

Approved For Release 2005/04/28 : CIA-RDP78B04560A005600010041-2

25X1C



NAMES AND BOUNDARY REPRESENTATION ARE NOT NECESSARILY AUTHORITY

Approved For Release 2005/04/28 : CIA-RDP78B04560A005600010041-2

CONFIDENTIAL

25X1C

~~CONFIDENTIAL~~

[REDACTED]

25X1C

1. Vehicular Cable Bridge, Route 1A By-pass, North Vietnam

A serviceable vehicular cable bridge spans the Song Thuong (river) immediately east of a ferry crossing on a Route 1A by-pass at 21-26N 106-17E (UTM XJ333722). On photography of [REDACTED] an undiscernible number of cables had been strung, the cable anchorages had been covered, and the approach roads were being prepared (Figure 1). Decking is now in place, and a truck moving away from the bridge on the southern approach probably attests to its serviceability (Figure 2). A ferry is moored to the southern bank approximately 150 meters east of the bridge.

25X1D

25X1D

[REDACTED]

NPIC Cable Cite 8991, DTG 080059Z, Nov 66
NPIC Briefing Board L-2250

25X1C

~~CONFIDENTIAL~~

[REDACTED]

Approved For Release 2005/01/22 : CIA-RDP78B04560A005600010041-2

NORTH VIETNAM

CABLE BRIDGE (SERVICEABLE)

ROUTE 1A

ROUTE 13A

KEP

BAC GIANG
PHU LANG THUONG

ONLY MAJOR ROADS DEPICTED

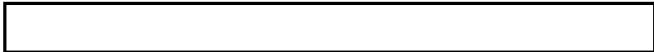
2AMS SERIES JOG (A) 1501
SHEET NF 48-11
1ST EDITION 1 JUNE 1965
SCALE 1:250,000

Approved For Release 2005/01/22 : CIA-RDP78B04560A005600010041-2

25X1C

25X1C

~~CONFIDENTIAL~~



25X1C



25X1D

CABLES STRUNG

25X1D

FIGURE 1. VEHICULAR CABLE BRIDGE UNDER CONSTRUCTION, ROUTE 1A BY-PASS, NORTH VIETNAM

NPIC L-2254 (11/66)

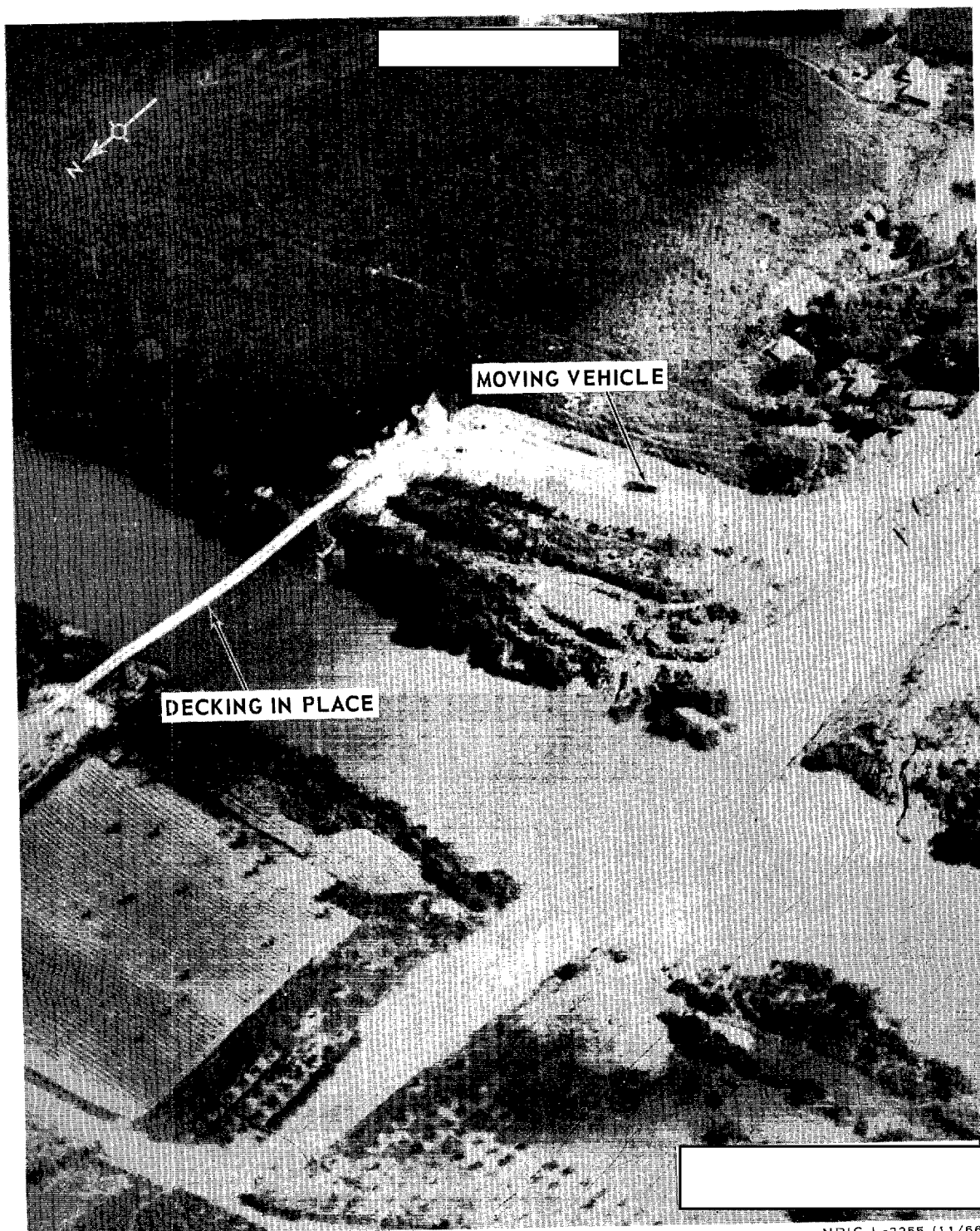
25X1C

~~CONFIDENTIAL~~



25X1C

25X1D



25X1D

NPIC L-2255 (11/66)

FIGURE 2. VEHICULAR CABLE BRIDGE (SERVICEABLE), ROUTE 1A BY-PASS, NORTH VIETNAM

25X1C

CONFIDENTIAL

25X1C



2. Railroad Ferry Slips, Viet Tri, North Vietnam

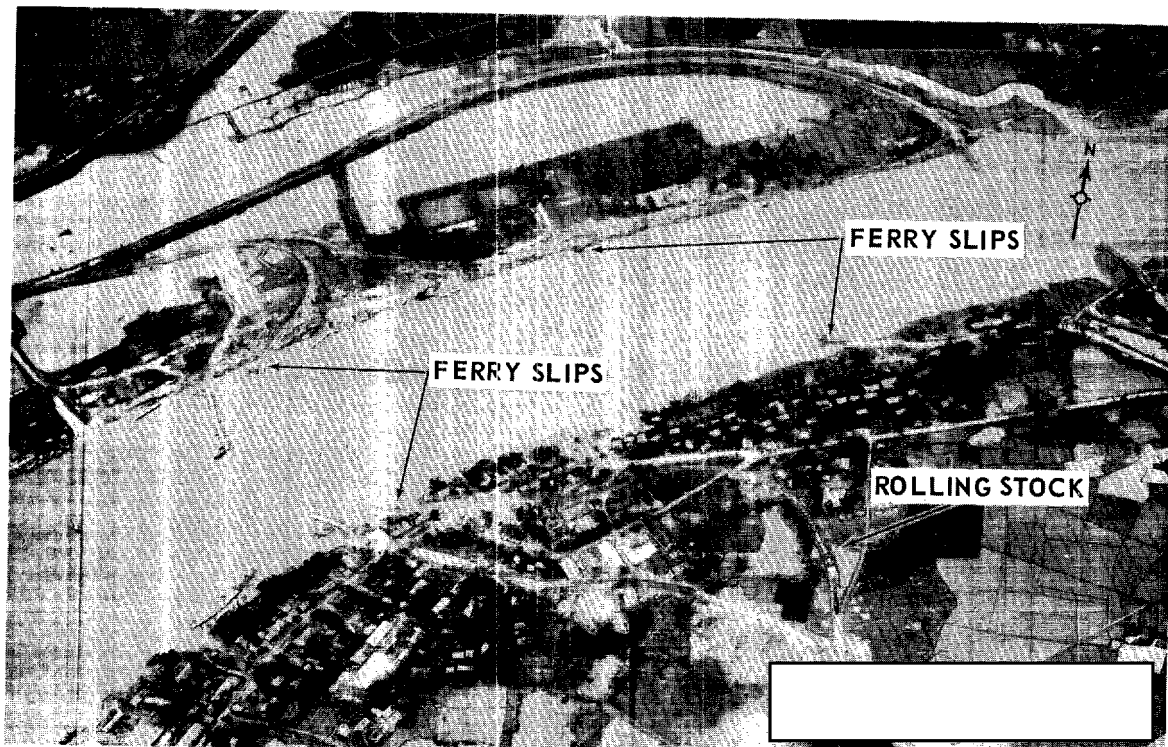
25X1A

Four serviceable railroad ferry slips are located east of the destroyed Viet Tri Railroad and Highway Bridge over the Song Lo (BE No [redacted] on the Ha Noi/Lao Cai Rail Line at 21-17N 105-26E (UTM WJ462550, WJ464549, WJ459549, and WJ461548). Rail spurs extend from the two ferry slips on the western bank of the Song Lo to a common junction with the main line at UTM WJ457551; rail spurs extend from the two ferry slips on the eastern bank to a common junction with the main line at UTM WJ475541. Eleven pieces of rolling stock and a probable locomotive were observed at UTM WJ463547 on [redacted] (Figure 3). The references listed below provide the historical development of this ferry complex.

25X1D
25X1D



NPIC Cable Cites 8865, DTG 242208Z, Oct 66; 8919, DTG 312338Z, Oct 66; 9018, DTG 092323Z, Nov 66
NPIC Briefing Board L-2210



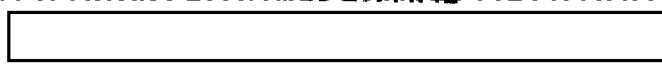
25X1D

FIGURE 3. RAILROAD FERRY SLIPS, VIET TRI, NORTH VIETNAM

NPIC L-2256 (11/66)

25X1C

CONFIDENTIAL



Approved For Release 2006/07/26 : CIA-RDP78B04560A005600010041-2

CONFIDENTIAL

Hoàng Ti R-370/66 25X1C



NORTH VIETNAM

DESTROYED BRIDGE

ROUTE 2

RAIL SPUR TO FERRY SLIP

Approved For Release 2006/07/26 : CIA-RDP78B04560A005600010041-2

CONFIDENTIAL

AMS SERIES L7014 SHEETS 6051 I, 6051 II 1ST EDITION 1965 SCALE 1:50,000 25X1C

[Redacted]

25X1C

3. Road and Bridge Reconstruction, Route 911, Laos

At least 20 personnel were engaged in road and bridge reconstruction on [Redacted] on Route 911 south of Ban Sop Khom at 16-53N 106-01E (UTM XDO88669), within a choke point established near the confluence of the Nam Kok (river) and an unnamed stream (Figure 4). By [Redacted] repeated air strikes had seriously affected the serviceability of Route 911 at this point. The road has probably not been open to vehicular traffic since [Redacted] when a single set of vehicle tracks was observed traversing the area (Summary 15, Item 4). A crater, which was observed interdicting the tracks on [Redacted] has subsequently not been by-passed. Route 911 is serviceable and in active use from the Route 911/912 junction south to the vicinity of Ban Nogkadeng at UTM XDO57738. The current reconstruction activity is an attempt to extend the serviceability of Route 911 to the Sepone area.

25X1D

25X1D

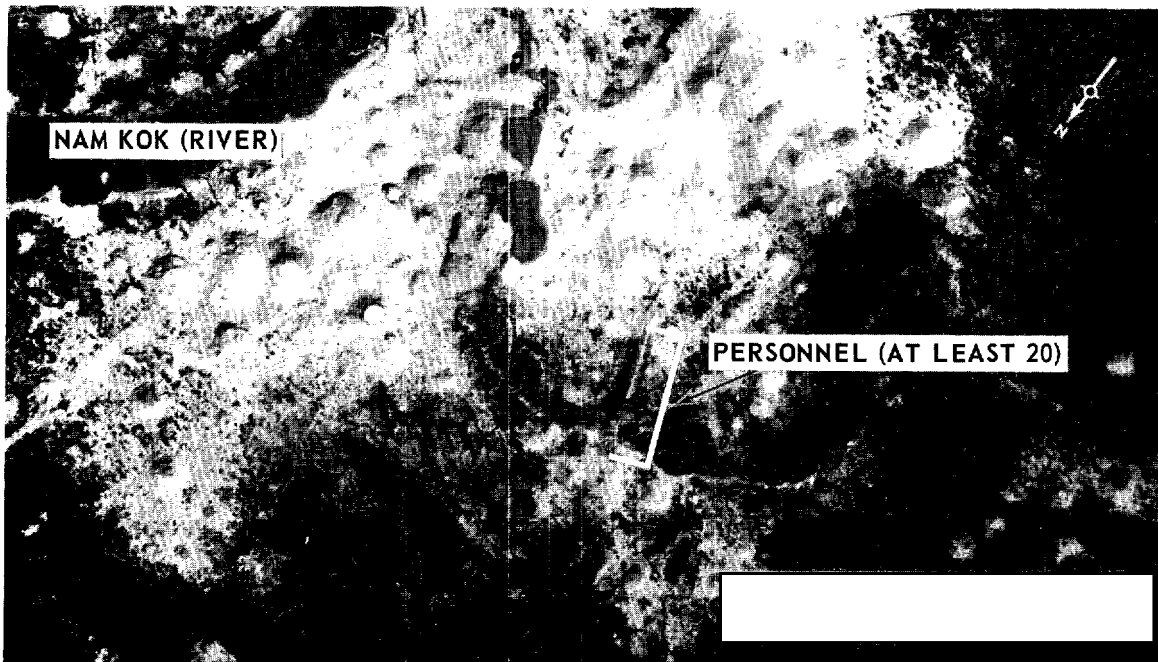
25X1D

25X1D

25X1D

[Redacted]

NPIC Cable Cite 8949, DTG 032333Z, Nov 66
NPIC Briefing Board L-1530



25X1D

FIGURE 4. ROAD AND BRIDGE RECONSTRUCTION, ROUTE 911, LAOS NPIC L-2257 (11/66)

25X1C

[Redacted]

STATOTHR

Approved For Release 2005/04/28 : CIA-RDP78B04560A005600010041-2

Approved For Release 2005/04/28 : CIA-RDP78B04560A005600010041-2

CONFIDENTIAL

25X1C

REVIEW OF SUMMARIES 1 - 26

Synopsis of Intelligence Techniques

Probably the most significant intelligence development reported in the first 26 summaries in this series was the rapid deterioration of the road network in the southern Laotian Panhandle, the extent of which precluded through vehicular traffic from North Vietnam into and/or through the Panhandle. The most plausible explanation for the resulting condition of these roads -- roads which were thought to have an all-weather capability -- was the apparent disregard of basic engineering techniques in the haste to complete a motorable supply route south to the triborder area. The effects of concentrated interdictions, heavy rain, and soil instability on this poorly designed road system were becoming evident in early [redacted] even before its completion; due to the large amount of effort required, the network was not maintained.

25X1D

Subsequent to the closing of the roads in the Laotian Panhandle during the season of the southwest monsoon, a significant increase in the level of military and logistics activity occurred in and immediately north of the Demilitarized Zone. The bulk of low-level reconnaissance flights then shifted to North Vietnam, where new road, railroad, and telecommunication construction was reported.

Throughout North Vietnam an effort has been made to provide alternate road and railroad routes at all potential choke points, thus providing a transportation network which can be characterized as a "system of alternates." This is most evident where multiple road and rail crossings have been constructed.

25X1B

Recent high-level photography has permitted identification of increased Communist activity at the geographic extremes of this report's area of interest. Extensive military and construction facilities have been observed in northwestern North Vietnam near the China border; signs of insurgent activity, partially concealed and probably encouraged by the heavy seasonal foliage, are becoming more evident along the Cambodia/South Vietnam border.

CONFIDENTIAL

25X1C

~~CONFIDENTIAL~~

25X1C

Listing of Contents

Summary 1: 1-20 April 1966 (NPIC/R-117/66)

- Item 1. New Construction on Unnumbered Road A (North Vietnam Route 137/Laos Route 912)
- Item 2. Probable Telecommunications Line Cut
- Item 3. Vehicular Activity and New Ford on Route 92
- Item 4. Military Activity Along Route 924
- Item 5. Military Activity Along the Se Kong (River)
- Item 6. Suspect Ammunition Storage Facility
- Item 7. Bridge Under Construction

Summary 2: 21-27 April 1966 (NPIC/R-122/66)

- Item 1. Military Activity on Routes 137 and 101
- Item 2. Route 137 Alignment Complete
- Item 3. Defoliation in Laotian Panhandle
- Item 4. Possible Truck Parks Along Route 110

Summary 3: 28 April-4 May 1966 (NPIC/R-124/66)

- Item 1. Vinh SAM Site C19-2
- Item 2. Alternate Route 92 Interdiction and Repair (Laos Route 924)
- Item 3. Route 92 Southern Extension
- Item 4. New Road Construction Along Route 964
- Item 5. Truck Park and Probable Staging Area on Route 165

Summary 4: 5-11 May 1966 (NPIC/R-157/66)

- Item 1. Vinh SAM Site B16-2
- Item 2. B-52 Strike Damage and Repair, Route 15
- Item 3. Track Activity on Route 912/137
- Item 4. Probable Improvement of Route 92
- Item 5. Additional Road Construction Near Route 96/964

Summary 5: 12-18 May 1966 (NPIC/R-168/66)

- Item 1. New Road Southwest from Route 911 (Laos Route 239)
- Item 2. Route 914 Construction Complete
- Item 3. New Possible Supply Route Facilities on Tonle Kong
- Item 4. New Pontoon Ferry at Siempang, Cambodia
- Item 5. Motorized River Craft on Tonle Kong


25X1C

~~CONFIDENTIAL~~

CONFIDENTIAL
 Approved For Release 2005/04/28 : CIA-RDP78B04560A005600010041-2



Summary 6: 19-25 May 1966 (NPIC/R-177/66)

- Item 1. Possible SA-2 Site, Vinh Area
- Item 2. Military Activity Along Route 912/137
- Item 3. Unnumbered Road Connecting Routes 911 and 23 (Laos Route 239)
- Item 4. Road Closings on Alternate Route 92 (Laos Route 924)
- Item 5. Probable  Near Route 96

Summary 7: 26 May-8 June 1966 (NPIC/R-188/66)

- Item 1. Route 912 All-weather Capability
- Item 2. New By-pass Under Construction on Route 911
- Item 3. Completion of Unnumbered Road Connecting Routes 911 and 23 (Laos Route 239)
- Item 4. Extension of Telecommunications Line Through the DMZ
- Item 5. Serviceability of Route 914
- Item 6. Probable Military Camp on Route 96
- Item 7. Activity Along the Se Kong (River)

Summary 8: 9-15 June 1966 (NPIC/R-195/66)

- Item 1. Increased Military Activity on Route 912
- Item 2. Alignment of Route 911 By-pass Complete
- Item 3. New By-pass and Ford on Route 92
- Item 4. New Vehicle Bridge on Route 110
- Item 5. Possible Transshipment on Tonle Kong (River)

Summary 9: 16-22 June 1966 (NPIC/R-204/66)

- Item 1. Interdiction Points on Route 92
- Item 2. Truck Parks Near Ban Bac
- Item 3. Road Closings on Route 96
- Item 4. Routes 110 and 110/96, Interdictions

Summary 10: 23 June-6 July 1966 (NPIC/R-210/66)

- Item 1. Dual-gauge Capability, Ha Noi/Ping-hsiang Rail Line
- Item 2. New By-pass Road and Probable Ferry Crossing
- Item 3. Probable Truck Park on Route 137
- Item 4. Road Interdictions, Route 92
- Item 5. Landslides on Route 96
- Item 6. Route 110 Segment Remains Unserviceable

CONFIDENTIAL
 Approved For Release 2005/04/28 : CIA-RDP78B04560A005600010041-2



~~CONFIDENTIAL~~

25X1C

Summary 11: 7-13 July 1966 (NPIC/R-211/66)

- Item 1. Rail By-pass, Ha Noi/Ping-hsiang Rail Line
- Item 2. Highway Bridge Reconstruction, Route 15
- Item 3. Truck Parks, Route 101
- SPECIAL PHOTOGRAPHIC SUPPLEMENT (Documentation of Cambodia Route 97 Construction)

Summary 12: 14-20 July 1966 (NPIC/R-224/66)

- Item 1. Railroad Bridge and By-pass Construction, Vinh/Dong Hoi Rail Line
- Item 2. Vehicular Cable Bridges, Route 15
- Item 3. By-pass Road, Route 15
- Item 4. Truck Park, Route 912
- Item 5. Landslides and Interdictions, Route 96

Summary 13: 21-27 July 1966 (NPIC/R-259/66)

- Item 1. Cable Bridge, Route 2
- Item 2. Rail Spur and Water-to-rail Transshipment Point, Ha Noi/Hai Phong Rail Line
- Item 3. Railroad Cable Bridges Under Construction, Vinh/Dong Hoi Rail Line
- Item 4. Vehicular Cable Bridge, Route 912
- Item 5. Truck Park, Junction of Routes 911 and 912
- Item 6. Infiltration Trail Construction, Demilitarized Zone, North Vietnam
- SPECIAL PHOTOGRAPHIC SUPPLEMENT (Railroad By-passes on Ha Noi/Ping-hsiang and Ha Noi/Hai Phong Rail Lines)

Summary 14: 28 July-3 August 1966 (NPIC/R-262/66)

- Item 1. Railroad Cable Bridge Under Construction, Vinh/Dong Hoi Rail Line, North Vietnam
- Item 2. Truck Convoys and Road Construction, Route 108, North Vietnam
- Item 3. Truck Park Complex, Junction of Routes 101 and 137, North Vietnam
- Item 4. Road Maintenance, Route 137, North Vietnam
- Item 5. Truck Convoy, Route 912, Laos
- Item 6. Infiltration Trail Construction, Demilitarized Zone, North Vietnam
- ROAD STATUS, SOUTHERN LAOTIAN PANHANDLE

25X1C

~~CONFIDENTIAL~~

~~CONFIDENTIAL~~

25X1C



Summary 15: 4-10 August 1966 (NPIC/R-264/66)

- Item 1. Railroad By-pass and Spur, Thanh Hoa/Vinh Rail Line, North Vietnam
- Item 2. Railroad Cable Bridge, Vinh/Dong Hoi Rail Line, North Vietnam
- Item 3. Rail Construction, Vinh/Dong Hoi Rail Line, North Vietnam
- Item 4. Interdictions, Route 911, Laos
- SPECIAL PHOTOGRAPHIC SUPPLEMENT (Vinh/Dong Hoi Rail Line)

Summary 16: 11-17 August 1966 (NPIC/R-265/66)

- Item 1. Interdictions, Ha Noi/Ping-hsiang Rail Line, North Vietnam
- Item 2. Standard-gauge Rail Cars, Kep/Thai Nguyen Rail Line Under Construction, North Vietnam
- Item 3. Railroad Ferry Reconstruction, Ha Noi/Vinh Rail Line, North Vietnam
- Item 4. Activity on the Vinh/Dong Hoi Rail Line, North Vietnam
- Item 5. Xom Ca Trang Vehicular Cable Bridges, Route 15, North Vietnam
- Item 6. Unserviceability and Disuse of Route 96, Laos
- SPECIAL PHOTOGRAPHIC SUPPLEMENT, Ha Noi/Vinh Rail Line, North Vietnam

Summary 17: 18-24 August 1966 (NPIC/R-303/66)

SPECIAL ISSUE: Cable Bridge Study

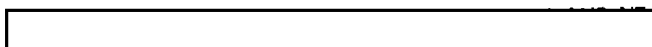
Summary 18: 25-31 August 1966 (NPIC/R-309/66)

- Item 1. Railroad Construction, Thanh Hoa/Vinh Rail Line, North Vietnam
- Item 2. Vehicular Cable Bridge Under Construction, Route 1A, North Vietnam
- Item 3. Probable Water-to-rail Transshipment Point, Vinh/Dong Hoi Rail Line, North Vietnam
- Item 4. Truck Park, Route 15, North Vietnam
- Item 5. Road Activity, Route 108, North Vietnam
- Item 6. Telecommunication Poles, Route 1A, North Vietnam

Summary 19: 1-7 September 1966 (NPIC/R-310/66)

- Item 1. Extensive Storage Facilities, Route 6, North Vietnam
- Item 2. Bac Giang Railroad By-pass Bridge, Ha Noi/Ping-hsiang Rail Line, North Vietnam
- Item 3. Bridge Camouflaging, Route 704, North Vietnam
- Item 4. Probable Military/Road Maintenance Camps, Route 151, North Vietnam
- Item 5. Possible Railroad Cable Bridge, Vinh/Dong Hoi Rail Line, North Vietnam

25X1C

~~CONFIDENTIAL~~

CONFIDENTIAL

25X1C

Summary 20: 8-14 September 1966 (NPIC/R-333/66)

- Item 1. Railroad Crane, Kep/Thai Nguyen Rail Line, North Vietnam
- Item 2. Railroad Cable Bridge, Vinh/Dong Hoi Rail Line, North Vietnam
- Item 3. Road Conditions, Routes 912 and 911, Laos
- Item 4. Cable Bridge, Route 1, South Vietnam
- Item 5. Suspect Insurgent Activity, Cambodia/South Vietnam Border Area

Summary 21: 22-28 September 1966 (NPIC/R-344/66)

- Item 1. Probable Military Facilities, Phong Tho Area, North Vietnam
- Item 2. Current Status of the Vinh/Dong Hoi Rail Line, North Vietnam

Summary 22: 29 September-5 October 1966 (NPIC/R-354/66)

- Item 1. North Vietnamese Supply Route, Phong Saly Province, Laos
- Item 2. Suspect Insurgent Camps, Cambodia/South Vietnam Border Area

Summary 23: 6-12 October 1966 (NPIC/R-356/66)

- Item 1. Activity on the Vinh/Dong Hoi Rail Line, North Vietnam
- Item 2. Road Conditions, Route 92, Laos
- Item 3. Suspect Insurgent Activity, Cambodia/South Vietnam Border Area

Summary 24: 13-19 October 1966 (NPIC/R-359/66)

- Item 1. Probable Military/Storage Area, Routes 4 and 191, North Vietnam
- Item 2. Dummy Locomotives, North Vietnam
- Item 3. Road Conditions, Routes 96 and 110, Laos
- SPECIAL PHOTOGRAPHIC SUPPLEMENT: Cable Bridges in North Vietnam, South Vietnam, and Laos

Summary 25: 20-26 October 1966 (NPIC/R-365/66)

- Item 1. Construction and/or Military Facilities, Route 4, North Vietnam
- Item 2. Water-to-rail Transshipment Point, Hai Phong Area, North Vietnam
- Item 3. Railroad Crane, Ha Noi/Thanh Hoa Rail Line, North Vietnam
- Item 4. Cable Suspension Bridge, Dong Phong Thuong, North Vietnam

Summary 26: 27 October-2 November 1966 (NPIC/R-368/66)

- Item 1. Military/Construction Facilities, Lai Chau Area, North Vietnam
- Item 2. River Crossings, Xom Ca Trang Area, North Vietnam
- Item 3. Road Maintenance, Route 912, Laos
- Item 4. Military Camp and Transshipment Point, Tonle Kong (River), Cambodia
- Item 5. Suspect Insurgent Camps, Cambodia/South Vietnam Border Area

25X1C

CONFIDENTIAL

~~CONFIDENTIAL~~

25X1C

Index of Topics

All subjects in this index are referenced as follows: Summary Number-Item Number or Summary Number-Special Photographic Supplement. For example, 1-1 (Summary 1-Item 1) or 1-SPS (Summary 1-Special Photographic Supplement).

Bridges

cable, railroad, 12-1; 13-3; 14-1; 15-2, SPS; 16-4, SPS; 17; 19-5; 20-2; 21-2; 23-1; 24-SPS
 cable, vehicular, 11-2; 12-2; 13-1, 4; 16-5; 17; 18-2; 20-4; 24-SPS; 25-4; 26-2, 3
 railroad, noncable, 13-SPS; 15-1, SPS; 16-SPS; 19-2; 21-2
 vehicular, noncable, 1-7; 8-4; 26-2

Camouflage: see "Deception techniques"

Construction: see "Bridges," "Military facilities," "Railroads," "Roads," and "Telecommunication lines"

Deception techniques, 19-2, 3; 24-2; 25-3; 26-2

Defoliation, 2-3

Demilitarized Zone, 1-2; 7-4; 13-6; 14-6

Ferry crossings, 2-1; 5-4; 7-5; 10-2

Infiltration trails: see "Demilitarized Zone" and "Insurgent camps"

Insurgent camps

Cambodia/South Vietnam border area, 20-5; 22-2; 23-3; 26-5
 Interdictions, 3-2; 4-2; 6-4; 7-2; 8-3; 9-1, 2, 3, 4; 10-4, 6; 12-5;
 14-Road status; 15-4; 16-1, 6; 20-3

Landslides, 3-2; 6-4; 9-2, 3; 10-5; 12-5; 14-Road status; 16-6

Military facilities (see also "Insurgent camps"), 1-4, 5; 2-1; 6-2; 7-6;
 8-1; 14-3; 19-1, 4; 20-5; 21-1; 24-1; 25-1; 26-1, 4

Railroads (see also "Deception techniques")

dual-gauge, 10-1; 16-2

Ha Noi/Hai Phong Rail Line, 13-2, SPS; 25-2

Ha Noi/Lao Cai Rail Line, 24-2

Ha Noi/Ping-hsiang Rail Line, 10-1; 11-1; 13-SPS; 16-1, 2; 19-2

Ha Noi/Vinh Rail Line, 15-1; 16-3, SPS; 18-1; 25-3

Kep/Thai Nguyen Rail Line, 10-1; 16-2; 20-1

standard-gauge, 16-2

25X1C

~~CONFIDENTIAL~~

~~CONFIDENTIAL~~

25X1C



Vinh/Dong Hoi Rail Line, 12-1; 13-3; 14-1; 15-2, 3, SPS; 16-4; 18-3;
19-5; 20-2; 21-2; 23-1; 24-SPS

Roads

Cambodia

Route 13, 20-5
Route 14, 20-5
Route 19, 20-5
Route 97, 5-3; 8-5; 11-SPS
Route 131, 20-5
Route 194, 5-4

Laos

Route 19, 22-1
Route 92, 1-3; 2-3; 3-3; 4-4; 6-4; 8-3; 9-1, 2, page 2; 10-4; 11-page
2; 14-Road status; 23-2
Route 96, 1-4; 2-3; 6-5; 7-6; 9-3, 4, page 2; 10-5; 11-page 2; 12-5;
14-Road status; 16-6; 24-3
Route 110, 1-5, 6, 7; 2-4; 8-4; 9-4, page 2; 10-6; 11-page 2; 14-Road
status; 24-3
Route 137, 1-1; 2-1, 2; 4-3; 6-2; 10-2, 3; 14-3, 4
Route 165, 2-3; 3-5
Route 239, 5-1; 6-3; 7-3
Route 911, 11-page 2; 13-5; 15-4; 20-3
Route 912, 1-1; 4-3; 6-2; 7-1; 8-1, 12-4; 13-4, 5; 14-5; 20-3; 24-SPS;
26-3
Route 914, 5-2; 7-5; 14-Road status
Route 922, 2-3; 14-Road status
Route 924, 3-2; 4-4; 6-4; 9-2; 14-Road status
Route 964, 3-4; 4-5
Route 9112, 7-2; 8-2

North Vietnam

Route 1A, 18-2, 6; 24-SPS
Route 2, 13-1; 24-SPS
Route 4, 24-1; 25-1; 26-1
Route 6, 19-1; 24-SPS; 26-1
Route 7, 24-SPS
Route 15, 3-1, 4-2; 6-1; 11-2; 12-2, 3; 16-5; 18-4; 24-SPS; 26-2
Route 18, 24-SPS
Route 19, 22-1; 24-SPS
Route 101, 2-1; 10-2; 11-3; 14-3
Route 108, 14-2; 18-5
Route 132, 21-1
Route 151, 19-4
Route 191, 24-1; 26-1
Route 604, 21-1
Route 1502, 26-2

serviceability: see "Landslides" and "Interdictions"

25X1C

~~CONFIDENTIAL~~



~~CONFIDENTIAL~~



25X1C

SA-2 sites, field-deployed, 3-1; 4-1; 6-1
Se Kong (River), 1-5; 3-3, 4; 4-5; 5-3, 5; 7-7; 8-5; 11-SPS; 26-4
Storage facilities, 1-5, 6; 2-1; 5-3; 6-5; 8-5; 14-3; 15-1; 19-1, 4;
20-5; 22-1

Telecommunication lines, 1-2; 7-4; 18-6; 19-1
Truck convoys, 14-2, 5; 18-5; 20-5
Truck parks, 2-1, 4; 3-5; 8-1; 9-2; 10-3; 11-3; 12-4; 13-5; 14-3; 18-4,
5; 19-1

Water-borne supply, 3-4; 4-5; 5-3, 5; 7-7; 8-5; 11-SPS; 22-1; 25-2; 26-4

~~CONFIDENTIAL~~



25X1C

25X1C

Approved For Release 2005/04/28 : CIA-RDP78B04560A005600010041-2

Approved For Release 2005/04/28 : CIA-RDP78B04560A005600010041-2