

Approved For Release 2005/04/28 : CIA-RDP78B04560A005600010034-0

CONFIDENTIAL



PHOTOGRAPHIC INTERPRETATION REPORT



25X1C



BLUE SPRINGS MISSION 5527

23 SEPTEMBER 1966

Declass Review By NIMA/DOD

NPIC/R-363/66

OCTOBER 1966

GROUP 1 EXCLUDED FROM
AUTOMATIC DOWNGRADING
AND DECLASSIFICATION

CONFIDENTIAL

Approved For Release 2005/04/28 : CIA-RDP78B04560A005600010034-0

25X1C

Approved For Release 2005/04/28 : CIA-RDP78B04560A005600010034-0

WARNING

This document contains information affecting the national defense of the United States, within the meaning of Title 18, sections 793 and 794, of the U.S. Code, as amended. Its transmission or revelation of its contents to or receipt by an unauthorized person is prohibited by law.

Approved For Release 2005/04/28 : CIA-RDP78B04560A005600010034-0

CONFIDENTIAL

25X1C

PREFACE

This summary report contains additional information on "new" and "change" targets and order of battle information on all targets listed in the index (MI) for this mission.

Items are arranged in sections.

The "New" section provides a description of targets newly identified or known but reported for the first time by NPIC.

The "Change" section provides a description of previously reported installations showing a major change, or those where an analysis of current photography furnishes more precise information.

The "Order of Battle" section provides information on targets where order of battle can be identified.

When there are no "New" or "Change" targets, or order of battle information, the appropriate section is omitted.

"New" and "change" targets are arranged 1) by country, 2) within the country according to subject, 3) within the subject by WAC area, and 4) within the WAC area by geographic coordinates in ascending order. Order of battle information is arranged 1) by subject, 2) within the subject according to country, 3) within the country by WAC area, and 4) within the WAC area by geographic coordinates in ascending order.

Map base used for derivation of coordinates is the best available among these series: US Air Target Chart, Series 200; AMS; ONC; or DIA JOG, 1:250,000.

The header line for each target contains, reading from left to right, the target name, the geographic coordinates,

the World Aeronautical Chart number, the Bombing Encyclopedia (BE) number, and the NPIC target number.

The COMOR target number, when available, appears above the photo reference data.

Photo reference data includes frame numbers and symbols denoting limiting conditions, photo interpretability, target coverage, and the mode.

Symbols for limiting conditions affecting photography are C (Clear), SC (Scattered Cloud Cover), HC (Heavy Cloud Cover), H (Haze), CS (Cloud Shadow), S (Snow), O (Obliquity), SD (Semidarkness), GC (Ground Cover), CF (Camouflage), and GR (Ground Resolution).

Interpretability of the photography is categorized as G (Good), F (Fair), and P (Poor). Target coverage is denoted by the symbols T (Total) or PT (Partial). The mode of coverage is indicated by ST (Stereo), NS (Non-Stereo), or PS (Partial Stereo).

When appropriate, an index follows "new" and "change" targets and another follows order of battle information, with targets in each index arranged alphabetically within a country.

AAA defenses are divided into three categories: light (ZPU-1, ZPU-2, ZPU-4, 37 mm), medium (57 mm, 85mm), and heavy (100 mm and larger). The term HMGAA (heavy machine gun antiaircraft) indicates a weapon smaller than a ZPU-i. Where a category cannot be determined, the site will be listed as an AAA site and the number of guns indicated (example: 6-gun AAA site, occupied/unoccupied).

25X1C

05X1

Approved For Release 2005/04/28 : CIA-RDP78B04560A005600010034-0

Next 1 Page(s) In Document Exempt

Approved For Release 2005/04/28 : CIA-RDP78B04560A005600010034-0

Approved For Release 2005/04/28 : CIA-RDP78B04560A005600010034-0

THIS SECTION PROVIDES A DESCRIPTION OF NEW TARGETS.

Approved For Release 2005/04/28 : CIA-RDP78B04560A005600010034-0

Target	Coordinates	WAC	Target Numbers	
			BE	NPIC
<p align="center">-NORTH VIETNAM-</p> <p>MILITARY INSTALLATIONS</p> <p>AI MO WAREHOUSE AREA NORTH EDGE OF AI MO AT UTM WJ945319. WAREHOUSE AREA CONSISTS OF A STORAGE AREA AND A MOTOR POOL CONTAINING 18 STORAGE BUILDINGS AND 32 SUPPORT BUILDINGS, AND 2 ADJACENT STORAGE AREAS AT UTM WJ945318 AND UTM WJ948323. THE AREA AT UTM WJ945318 CONTAINS BUILDING MATERIALS. ACTIVITY -- 22 CARGO TRUCKS, 5 PROBABLE DRILLING RIGS MOUNTED ON TRAILERS, 3 CRAWLER TRACTORS, 2 PROBABLE TRACTORS, A CARGO TRAILER, AND SPOOLS OF COMMUNICATION WIRE.</p>	2105N 10554E	0616		407-D
<p>ELECTRONICS/COMMUNICATIONS</p> <p>HANOI/BAC MAI AIRFIELD MICROWAVE FACILITY 0.6 NM NW OF HANOI/BAC MAI AIRFIELD AND 2.2 NM SW OF HA NOI AT UTM WJ860218. FACILITY CONSISTS OF AN R-400 MICROWAVE ANTENNA WITH 2 PARABOLIC REFLECTORS ORIENTED AT APPROXIMATELY 18 DEGREES, 1 PROBABLE GENERATOR, AND 4 ASSOCIATED BUILDINGS.</p>	2059N 10549E	0616		112-E3
<p>QUANG MO AW/GCI FACILITY IMMEDIATELY SOUTH OF QUANG MO AND 3.9 NM NNE OF BAC GIANG AT UTM XJ281587. FACILITY CONSISTS OF 1 BIG BAR AIR WARNING RADAR, 1 ROCK CAKE/STONE CAKE HEIGHT-FINDING RADAR, 1 VAN TRAILER, AND 1 GENERATOR.</p>	2119N 10614E	0616		238-L

25X1D

25X1D

25X1D

25X1C

CONFIDENTIAL

25X1C

[Redacted]

25X1D

25X1D

25X1D

25X1A

25X1C

Target	Coordinates	WAC	Target Numbers	
			BE	NPIC
<p>INDUSTRY</p> <p>HA NOI RUBBER PRODUCTS PLANT SW EDGE OF HA NOI, 3 NM NE OF HA DONG, AT UTM WJ846215. PLANT CONSISTS OF A PARTIALLY FENCED AREA CONTAINING 3 PROCESSING/FABRICATION BUILDINGS, 1 ADMINISTRATION BUILDING, 2 POWERPLANTS, 22 STORAGE/SUPPORT BUILDINGS, AND 5 CHEMICAL TANKS.</p> <p>[Redacted]</p>	2059N 10549E	0616	[Redacted]	112-X
<p>BASIC SERVICES</p> <p>NAM DINH POSS LOW-HEAD HPP U/C 3.7 NM SW OF NAM DINH ON A CANAL AT UTM XH181535. A POSSIBLE LOW-HEAD HYDROELECTRIC DAM IS UNDER CONSTRUCTION. A 2-CHANNEL INVERTED SIPHON HAS BEEN CONSTRUCTED, PROBABLY TO DRAIN NEARBY RICE FIELDS. THE ORIGINAL CHANNEL IS IN THE PROCESS OF BEING DAMMED. A TRANSFORMER STATION IS AT UTM XH186522. (SEE ATTACHMENT 1)</p> <p>[Redacted]</p>	2022N 10607E	0616		236-J
<p>KEP LOW-HEAD HYDROELECTRIC POWER PLANT 3.3 NM NE OF KEP AT UTM XJ381713. PLANT CONSISTS OF A SMALL DAM ACROSS THE SONG THUONG (RIVER) WITH 1 GENERATOR HOUSE VISIBLE ON THE WESTERN SIDE OF THE RIVER. A CLEARED STRIP, POSSIBLY FOR A POWER TRANSMISSION LINE, RUNS FROM THE VICINITY OF THE DAM TO UTM XJ403717.</p> <p>[Redacted]</p>	2126N 10620E	0616		211-I

CONFIDENTIAL

[Redacted]

Approved For Release 2005/04/28 : CIA-RDP78B04560A005600010034-0

THIS SECTION PROVIDES A DESCRIPTION OF PREVIOUSLY REPORTED TARGETS SHOWING CHANGE.

Approved For Release 2005/04/28 : CIA-RDP78B04560A005600010034-0

CONFIDENTIAL

25X1C

Target	Coordinates	WAC	Target Numbers	
			BE	NPIC
<p>-NORTH VIETNAM-</p> <p>MILITARY INSTALLATIONS</p> <p>HA DONG ARMY BARRACKS 0.9 NM WNW OF HA DONG AT UTM WJ804192. INSTALLATION CONTAINS 9 BARRACKS, 2 ADMINISTRATION, 25 STORAGE, 6 AMMUNITION STORAGE, 3 MESSHALL, AND APPROXIMATELY 20 MISCELLANEOUS BUILDINGS.</p>	2058N 10546E	0616		256-B
<p>HA NOI SUPPLY DEPOT NNE 4.5 NM NE OF HA NOI RAILROAD CLASSIFICATION YARD AT UTM WJ930295. WALLED MAIN DEPOT AREA (HA NOI ARMY SUPPLY DEPOT NE THUONG CAT,) CONSISTS OF AN OPEN STORAGE AREA, 5 LARGE WAREHOUSES, 6 SMALL VENTILATED BUILDINGS, 2 VEHICLE MAINTENANCE SHEDS, 1 LARGE TRANSSHIPMENT BUILDING, 39 SUPPORT BUILDINGS, AND 29 GABLE-ROOFED, 4 LARGE GABLE-ROOFED, AND 5 MONITOR-ROOFED STORAGE BUILDINGS. A RAIL BY-PASS FROM THE HA NOI/PING-HSIANG RAIL LINE TERMINATES IN 2 DEAD HEADS AT A RAIL-TO-ROAD TRANSSHIPMENT POINT IN AN OPEN STORAGE AREA. ACTIVITY -- 7 PASSENGER CARS (POSSIBLY PART OF A WORK TRAIN), 17 BOXCARS, 20 GONDOLA CARS, AND 6 FLATCARS (2 WITH POL TANKS) ARE ON THE BY-PASS AND SPURS. NUMEROUS SECTIONS OF PIPE OF VARYING LENGTH AND SIZE, SPOOLS OF WIRE, AND CRATES ARE IN OPEN STORAGE.</p>	2104N 10553E	0616		114-D
<p>AI MO WAREHOUSE AREA WEST ON SOUTH EDGE OF KIM QUAN DONG AT UTM WJ954310. AREA CONSISTS OF A PARTIALLY WALLED STORAGE AREA AND MOTOR POOL CONTAINING 18 STORAGE BUILDINGS, 3 OPEN SHEDS, 9 SUPPORT BUILDINGS, 1 BUILDING UNDER CON- STRUCTION, A COAL STORAGE YARD, AND A VEHICLE</p>	2104N 10555E	0616		407-C

25X1A

25X1A

25X1C

CONFIDENTIAL

CONFIDENTIAL

25X1C

25X1D

25X1D

25X1D

25X1D

25X1A

25X1C

Target	Coordinates	WAC	Target Numbers	
			BE	NPIC
<p>MAINTENANCE AREA. ACTIVITY -- 1 CARGO TRUCK AND 2 UNIDENTIFIED VEHICLES.</p> <p>[REDACTED]</p>				
<p>AI MO WAREHOUSE AREA EAST ON NORTH EDGE OF KIM QUAN DONG AT UTM WJ960317. RAIL-SERVED AREA CONTAINS 16 LARGE WAREHOUSE BUILDINGS, NUMEROUS SUPPORT BUILDINGS, 2 BUILDINGS UNDER CONSTRUCTION, AND 4 OPEN STORAGE AREAS CON- TAINING UNIDENTIFIED MATERIAL.</p> <p>[REDACTED]</p>	2105N 10555E	0616	[REDACTED]	407-B
<p>BINH HA MILITARY CAMP NW EDGE OF BINH HA AT UTM WJ990350. INSTALLATION IS NOW CONFIRMED AS A MILITARY CAMP. SECURED CAMP CONTAINS 5 MULTISTORY BARRACKS, 9 BARRACKS-TYPE, 1 MONITOR-ROOFED ADMINISTRATION, 3 MESSHALL, AND 13 SUPPORT BUILDINGS, 4 ATHLETIC FIELDS/TROOP TRAINING FACILITIES, AND 1 SMALL-ARMS FIRING RANGE.</p> <p>[REDACTED]</p>	2107N 10557E	0616		297
<p>KEP AIRFIELD BARRACKS & STORAGE AREA 1.6 NM SSW OF KEP AT UTM XJ324645. AREA CONTAINS AT LEAST 32 REVETTED STORAGE BUILDINGS, NUMEROUS VEHICLE SHELTERS, AND SUPPORT BUILDINGS ALL SERVED BY A ROAD NET FROM ROUTE 1A. ACTIVITY -- NUMEROUS OCCUPIED AAA SITES AND A PROBABLE RADAR SITE.</p> <p>[REDACTED]</p>	2122N 10616E	0616		211-H

CONFIDENTIAL

CONFIDENTIAL

25X1C

Target	Coordinates	WAC	Target Numbers	
			BE	NPIC
<p>ELECTRONICS/COMMUNICATIONS</p> <p>HA DONG COMMUNICATIONS FACILITY 1.1 NM EAST OF HA DONG AND 3.5 NM SW OF HA NOI. FACILITY CONSISTS OF A WALL-SECURED CONTROL AREA CONTAINING 1 CONTROL BUILDING, 6 SUPPORT BUILDINGS, A WATER TOWER, AND A COOLING POND. AN ANTENNA FIELD TO THE EAST AND SOUTH CONTAINS 1 LARGE AND 1 SMALL DOUBLE RHOMBIC ARRANGED AS A PAIR FOR DAY/NIGHT OPERATIONS, AND 6 HORIZONTAL DIPOLES, 4 OF WHICH ARE ARRANGED IN PAIRS FOR DAY/NIGHT OPERATIONS. (SEE ATTACHMENT 2)</p>	2058N 10548E	0616		256-H
<p>HA NOI RADIO BROADCAST STATION ME TRI 4.3 NM SW OF HA NOI AND 0.6 NM SSE OF ME TRI. SECURED FACILITY CONTAINS A DOUBLE-WALLED CONTROL BUILDING, 2 STEEL LATTICE TOWERS WITH CROSSARMS SUPPORTING SEVERAL HORIZONTAL ELEMENTS, 2 PAIRS OF DAY/NIGHT RHOMBIC ANTENNAS, AT LEAST 16 PROBABLE HORIZONTAL DIPOLE ANTENNAS, AND AT LEAST 8 OTHER MASTS. SUPPORT FACILITIES INCLUDE APPROXIMATELY 25 BUILDINGS AND A BUNKERED BUILDING.</p>	2100N 10547E	0616		112-J
<p>INDUSTRY</p> <p>BAC GIANG CHEMICAL FERTILIZER PLANT 2 NM NORTH OF BAC GIANG. CONSTRUCTION CONTINUES ON THE PLANT. THE NITRIC ACID SECTION IS NOT YET COMPLETE. SMOKE FROM THE CHIMNEY INDICATES STEAMPLANT IS OPERATING. VEHICLE TRACKS ARE OBSERVED IN COAL YARD.</p>	2118N 10612E	0616		238-C

25X1D

25X1D

25X1D

25X1A

25X1C

CONFIDENTIAL

CONFIDENTIAL

25X1C

Target	Coordinates	WAC	Target Numbers	
			BE	NPIC
<p>STORAGE</p> <p>VAN LA STORAGE DEPOT SOUTH 2.1 NM SW OF HA DONG AT UTM WJ789157. DEPOT CONTAINS A WALLED STORAGE AREA WITH 4 LARGE DOUBLE-GABLE AND 3 SINGLE-GABLE WAREHOUSES AND 9 SUPPORT BUILDINGS.</p>	2056N 10546E	0616		256-D
<p>HA NOI PETROLEUM PRODUCTS STORAGE THANH AM 3.7 NM NE OF HA NOI AT UTM WJ932294. ALL TANKS HAVE BEEN DESTROYED OR DISMANTLED. THE FACILITY APPEARS TO BE ABANDONED.</p>	2103N 10553E	0616		114-D1

25X1A

25X1D

25X1D

25X1C

CONFIDENTIAL

Approved For Release 2005/04/28 : CIA-RDP78B04560A005600010034-0

THIS SECTION PROVIDES ORDER OF BATTLE INFORMATION.

Approved For Release 2005/04/28 : CIA-RDP78B04560A005600010034-0

~~CONFIDENTIAL~~

25X1C

[REDACTED]

25X1D

25X1A
25X1D

25X1D

25X1D

Target	Coordinates	WAC	Target Numbers	
			BE	NPIC
<p>-NORTH VIETNAM-</p> <p>MISSILES</p> <p>HA NOI ARMY BARRACKS NE GIA THUONG OB -- APPROXIMATELY 1 DISASSEMBLED SA-2 LAUNCHER AND ASSOCIATED EQUIPMENT, AND APPROXIMATELY 132 MISSILE CANISTERS. ACTIVITY -- 2 PIECES OF UNIDENTIFIED EQUIPMENT. [REDACTED]</p>	2104N 10553E	0616	[REDACTED]	114-E
<p>AIR</p> <p>HANOI/GIA LAM AIRFIELD OB -- 1 FAGOT/FRESCO, 2 COKE, 7 CRATE, 3 CAB, 4 COLT, 4 HOUND, 7 SMALL POSSIBLE AIRCRAFT, AND 2 SMALL POSSIBLE HELICOPTERS. [REDACTED]</p>	2102N 10553E	0616		114
<p>NAVAL</p> <p>CUA LACH GIANG (RIVER) NAVAL AREA VESSELS -- 4 CAMOUFLAGED VESSELS ON WEST BANK OF THE NAM DINH GIANG AT 20-20-21N 106-09-57E (UTM XH215492). THREE OF THE VESSELS APPEAR TO BE BARGES OR SAMPANS WHILE 1 IS MUCH SHORTER AND MAY BE A SMALL TUG. [REDACTED]</p>	2001N 10612E	0616		509
<p>GROUND</p> <p>HA DONG ARMY SUPPLY DEPOT OB -- NUMEROUS CARGO TRUCKS, VAN TRUCKS, TANK TRUCKS AND TRAILERS, AND 1 CRANE. [REDACTED]</p>	2058N 10547E	0616		112-H

25X1A

25X1C

~~CONFIDENTIAL~~

CONFIDENTIAL

25X1C

[Redacted]

25X1D

AI MO WAREHOUSE AREA WEST
ACTIVITY -- 1 CARGO TRUCK AND 2 UNIDENTIFIED
VEHICLES.

2104N 10555E

0616

[Redacted] 407-C

25X1A

25X1D

AI MO WAREHOUSE AREA
ACTIVITY -- 22 CARGO TRUCKS, 5 PROBABLE DRILLING
RIGS MOUNTED ON TRAILERS, 3 CRAWLER TRACTORS,
2 PROBABLE TRACTORS, A CARGO TRAILER, AND SPOOLS
OF COMMUNICATION WIRE.

2105N 10554E

0616

407-D

25X1D

KEP AIRFIELD BARRACKS & STORAGE AREA
ACTIVITY -- NUMEROUS OCCUPIED AAA SITES AND A
PROBABLE RADAR SITE.

2122N 10616E

0616

211-H

25X1D

ELECTRONICS/COMMUNICATIONS
QUANG MO AW/GCI FACILITY
OB -- 1 BIG BAR AIR WARNING RADAR, 1 ROCK
CAKE/STONE CAKE HEIGHT-FINDING RADAR, 1 VAN
TRAILER, AND 1 GENERATOR.

2119N 10614E

0616

238-L

25X1D

MISCELLANEOUS
HA NOI RR CAR REPAIR SHOPS GIA LAM
ACTIVITY -- 10 BOXCARS, 22 GONDOLA CARS, 19 FLATCARS,
8 TANK CARS, AND 5 UNIDENTIFIED CARS.

2103N 10553E

0616

[Redacted] 114-C

25X1A

25X1C

HA NOI ARMY SUPPLY DEPOT NINE
ACTIVITY -- 7 PASSENGER CARS (POSSIBLY PART OF A
WORK TRAIN), 17 BOXCARS, 20 GONDOLA CARS, AND 6
FLATCARS (2 WITH POL TANKS) ARE ON THE BY-PASS

2104N 10553E

0616

114-D

CONFIDENTIAL

CONFIDENTIAL

25X1C

Target	Coordinates	WAC	Target Numbers	
			BE	NPIC
25X1D AND SPURS. [REDACTED]				
25X1D YEN VIEN RR CLASSIFICATION YARD ACTIVITY -- 2 LOCOMOTIVES WITH TENDERS, 55 BOXCARS, 28 GONDOLA CARS, 8 FLATCARS, AND 10 PASSENGER CARS. [REDACTED]	2105N 10555E	0616	[REDACTED]	407-A

25X1A

25X1C

CONFIDENTIAL

CONFIDENTIAL

25X1C

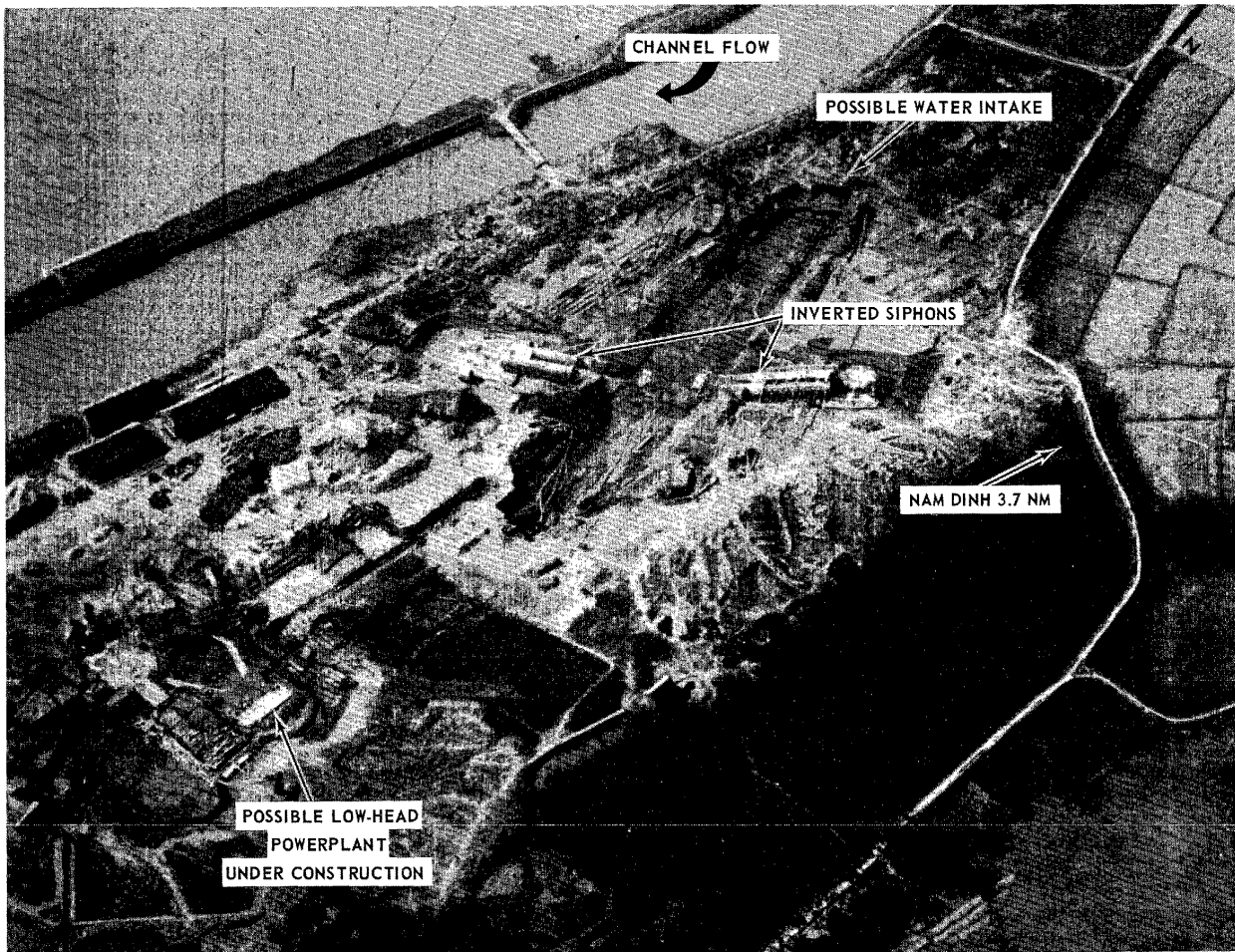
[Redacted]

Target	Coordinates	WAC	Target Numbers	
			BE	NPIC
RANDOM SIGHTINGS				
25X1D A 3-TRACK RAILYARD AT 20-27N 206-03E, UTM XH099630, CONTAINS 18 PIECES OF ROLLING STOCK (AT LEAST 11 DAMAGED). [Redacted]				
25X1D PONTOON BRIDGE SECTIONS AND A FERRY ARE AT 20-57N 105-47E, UTM WJ823179, ON SE SIDE OF THE HA DONG (RIVER). [Redacted]				
25X1D TWO SECTIONS OF A PROBABLE FLOATING DOCK ARE AT 21-02N 105-52E, UTM WJ902264. [Redacted]				
25X1D PONTOON BRIDGE SECTIONS ARE ALONG SOUTH BANK OF THE CANAL DES RAPIDES AT 21-04N 105-52E, UTM WJ915297. [Redacted]				
25X1D A PONTOON BRIDGE ACROSS THE SON CAU (RIVER) IS AT 21-12N 106-05E, UTM XJ133450. [Redacted]				
25X1D PONTOON BRIDGE SECTIONS AND FERRY ARE ALONG BOTH BANKS OF THE SONG CAU (RIVER) AT 21-13N 106-04E, UTM XJ118463 [Redacted]				
25X1D PONTOON BRIDGE SECTIONS ARE ON EAST BANK OF THE SONG THUONG (RIVER) AT 21-16N 106-11E, UTM XJ238521. [Redacted]				
25X1D PONTOON BRIDGE SECTIONS AND 2 FERRIES ARE ON WEST BANK OF THE SONG THUONG (RIVER) AT 21-17N 106-11E AT UTM XJ234544. [Redacted]				

25X1C

CONFIDENTIAL

CONFIDENTIAL

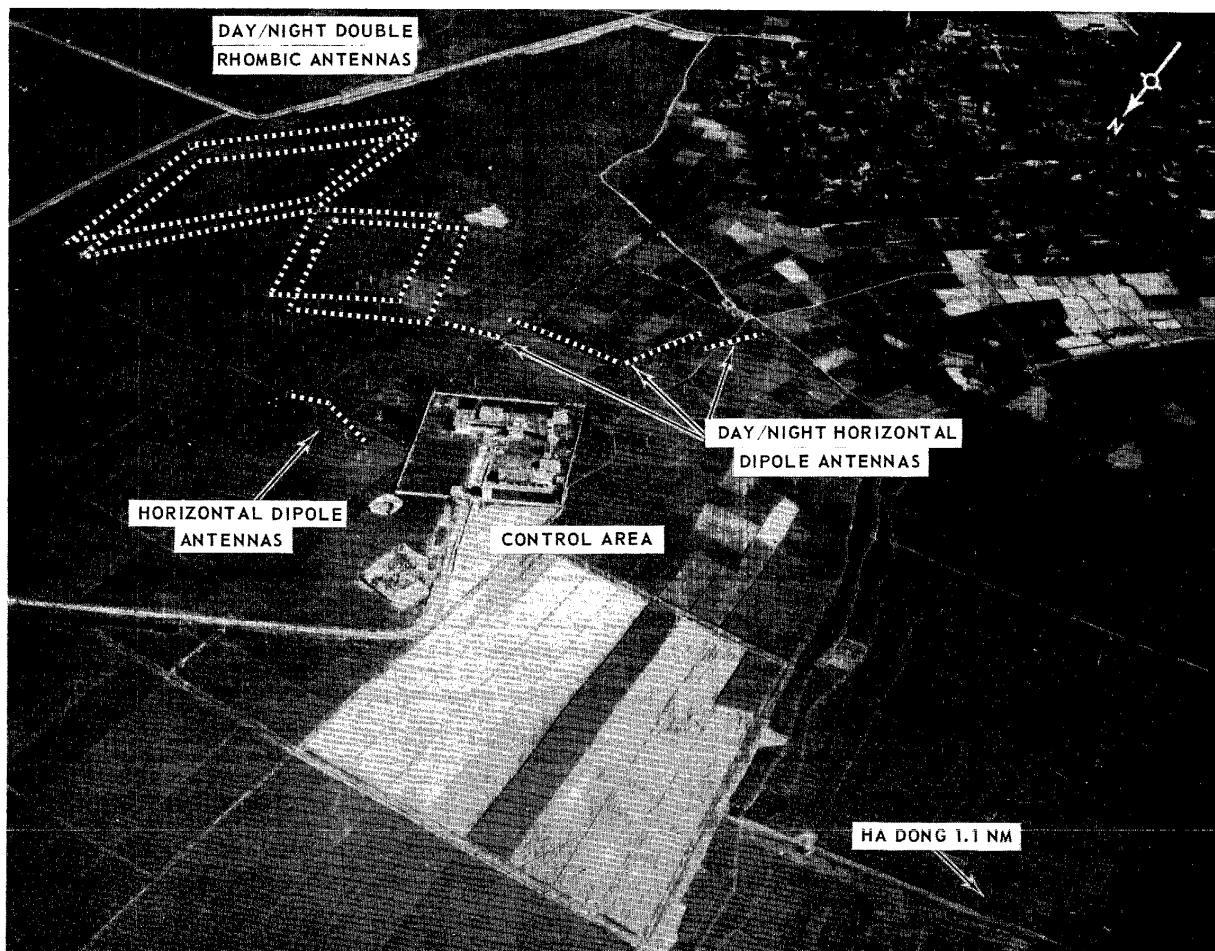


NAM DINH POSSIBLE LOW-HEAD HYDROELECTRIC POWERPLANT UNDER CONSTRUCTION, NORTH VIETNAM.

NPIC L-2160 (10/66)

CONFIDENTIAL

25X1C



HA DONG COMMUNICATIONS FACILITY, NORTH VIETNAM.

NPIC L-2161 (10/66)

25X1C

CONFIDENTIAL

25X1C

Approved For Release 2005/04/28 : CIA-RDP78B04560A005600010034-0

Approved For Release 2005/04/28 : CIA-RDP78B04560A005600010034-0