

NOTICE

This is the second in a series of updated and supplementary items to be inserted in NPIC/R-267/66, *Southeast Asia Activity Report, Communications Facilities, North Vietnam*. Items listed as negated should be deleted from the report.

Updated Items

	Page
Ha Noi Radio Receiving Station Son Dong	A-13
Ha Dong Communications Facility	A-17

Negated Items

	Page
Phuc Yen Communications Station	A-19

25X1A [REDACTED] is now identified as a component of the instrument landing system for the Phuc Yen Airfield

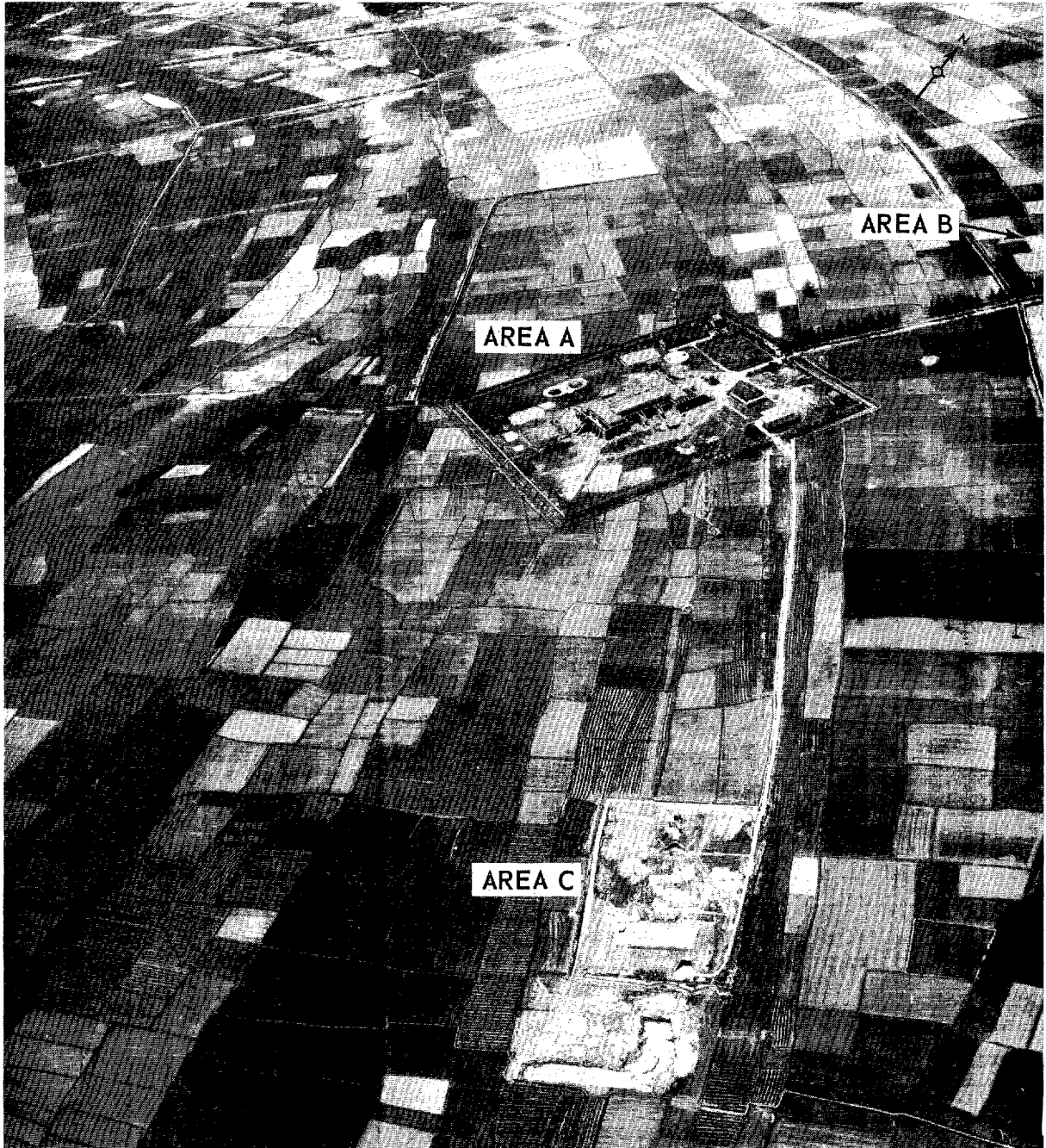
The previously reported Phuc Yen Communications Station [REDACTED] 25X1A

NO FOREIGN DISSEM

25X1C

HA NOI INTERNATIONAL RADIO TRANSMISSION STATION DAI MO
WJ796204
UTM COORDINATES

20-59-10N 105-46-00E
GEOGRAPHIC COORDINATES



NPIC L-6219 (8/66)

CONFIDENTIAL

NO FOREIGN DISSEM

25X1C

25X1A



WJ718273
UTM COORDINATES

21-02-51N 105-41-32E
GEOGRAPHIC COORDINATES

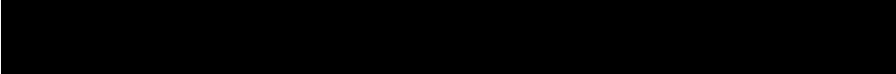
NAME: HA NOI RADIO RECEIVING STATION SON DONG

LOCATION: 8.6 NM WNW OF HA NOI

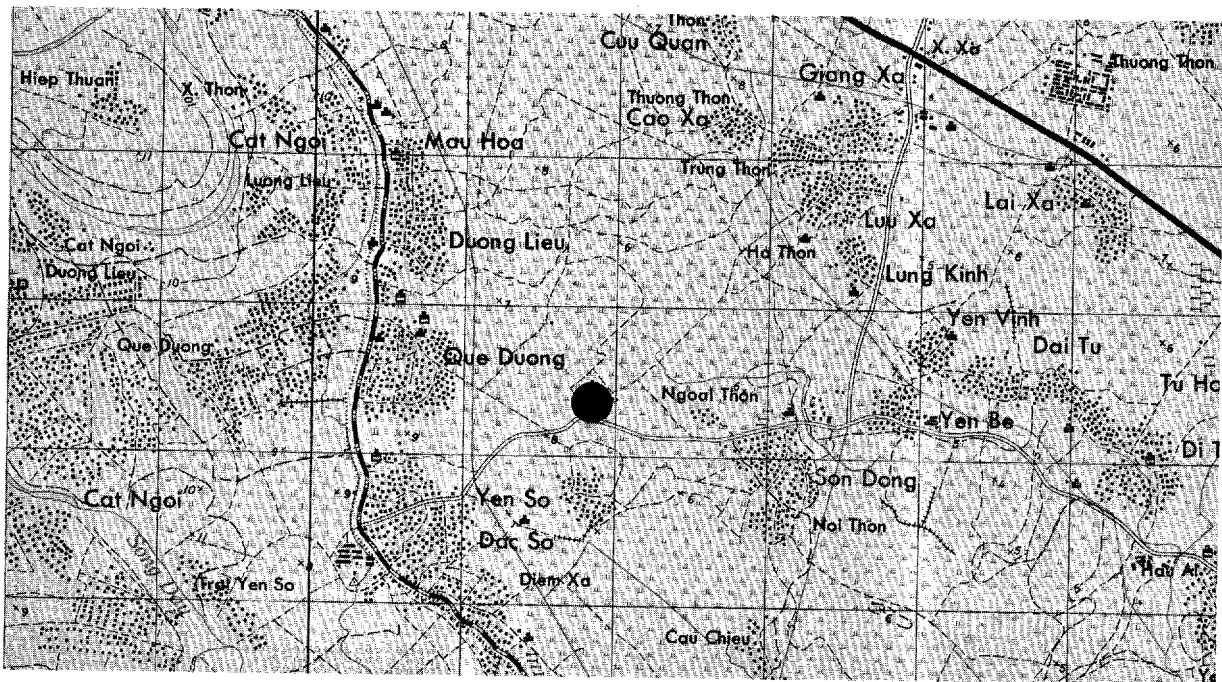
DESCRIPTION: FACILITY CONSISTS OF A CONTROL/SUPPORT AREA SURROUNDED BY AN ANTENNA FIELD WITH 3 LARGE AND 3 SMALL DOUBLE RHOMBIC ANTENNAS ARRANGED IN PAIRS FOR DAY/NIGHT OPERATIONS, 2 OTHER DOUBLE RHOMBS, 6 SINGLE RHOMBS, AND 6 HORIZONTAL DIPOLES.

THE CONTROL/SUPPORT AREA IS SECURED BY A FENCE AND CONTAINS 17 SUPPORT BUILDINGS. CONSTRUCTION IS COMPLETED ON A PERSONNEL BUNKER IMMEDIATELY NE.

25X1D



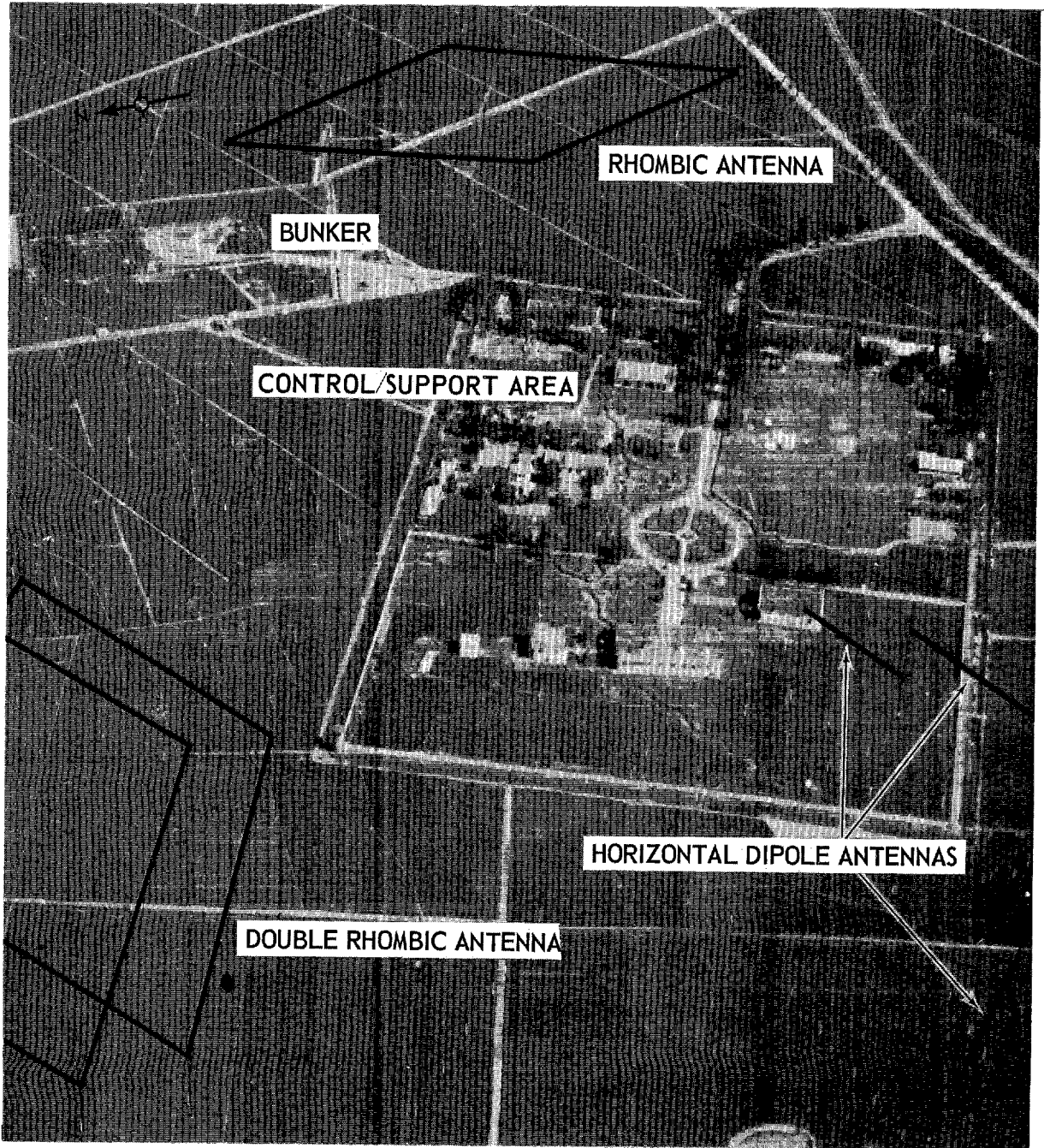
MAP REFERENCES: AMS SERIES L7014, SHEET 6151-III, 1ST ED, 1965 (U)
AMS SERIES 1501, SHEET NF 48-11, 1ST ED, AUG 65 (U)



HA NOI RADIO RECEIVING STATION SON DONG

WJ718273
UTM COORDINATES

21-02-51N 105-41-32E
GEOGRAPHIC COORDINATES



NPIC L-5899 (10/66)

25X1A

WJ818216
UTM COORDINATES

20-59-43N 105-47-10E
GEOGRAPHIC COORDINATES

NAME: HA NOI RADIO BROADCASTING STATION ME TRI

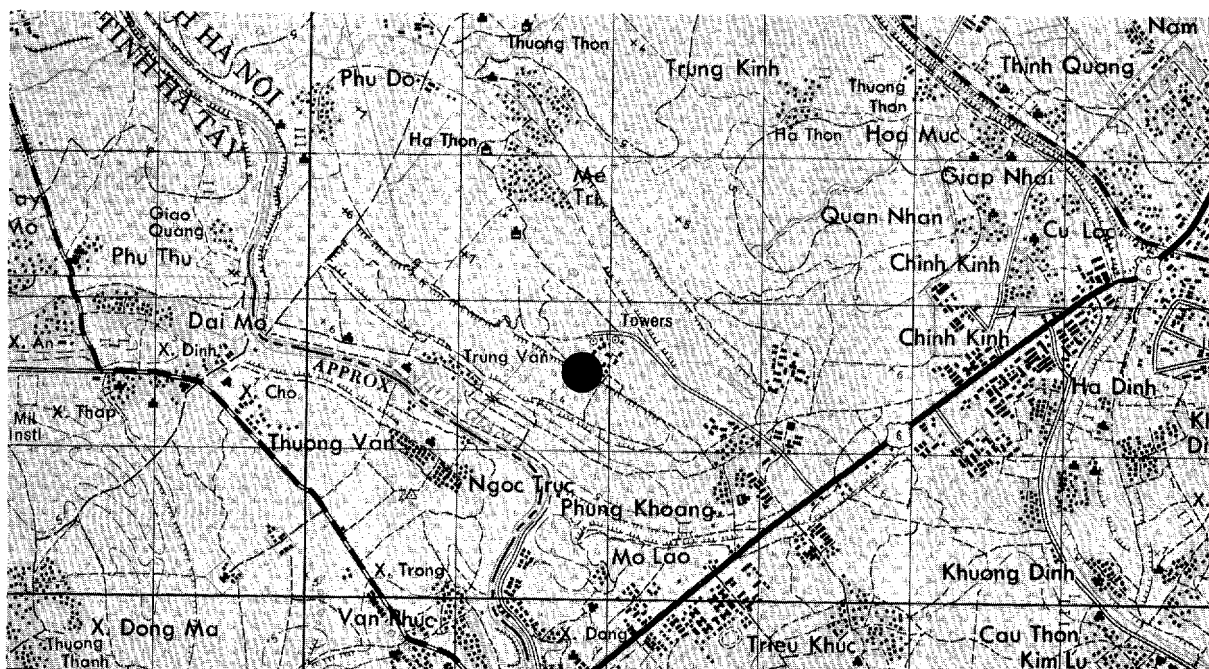
LOCATION: 4.3 NM SW OF HA NOI AND 0.6 NM SSE OF ME TRI

DESCRIPTION: SECURED FACILITY CONTAINS A DOUBLE-WALLED CONTROL BUILDING, 2 STEEL LATTICE TOWERS WITH CROSSARMS SUPPORTING SEVERAL HORIZONTAL ELEMENTS, 2 PAIRS OF DAY/NIGHT RHOMBIC ANTENNAS, AT LEAST 6 PROBABLE HORIZONTAL DIPOLE ANTENNAS, AND AT LEAST 8 OTHER MASTS.

SUPPORT FACILITIES INCLUDE APPROXIMATELY 25 BUILDINGS AND A BUNKERED BUILDING.

25X1D

MAP REFERENCES: AMS SERIES L701, SHEET 6173-I, 3D ED, JUN 60 (U)
AMS SERIES 1501, SHEET NF 48-11, 1ST ED, AUG 65 (U)



NPIC L-5222 (8/66)

NO FOREIGN DISSEM

25X1C

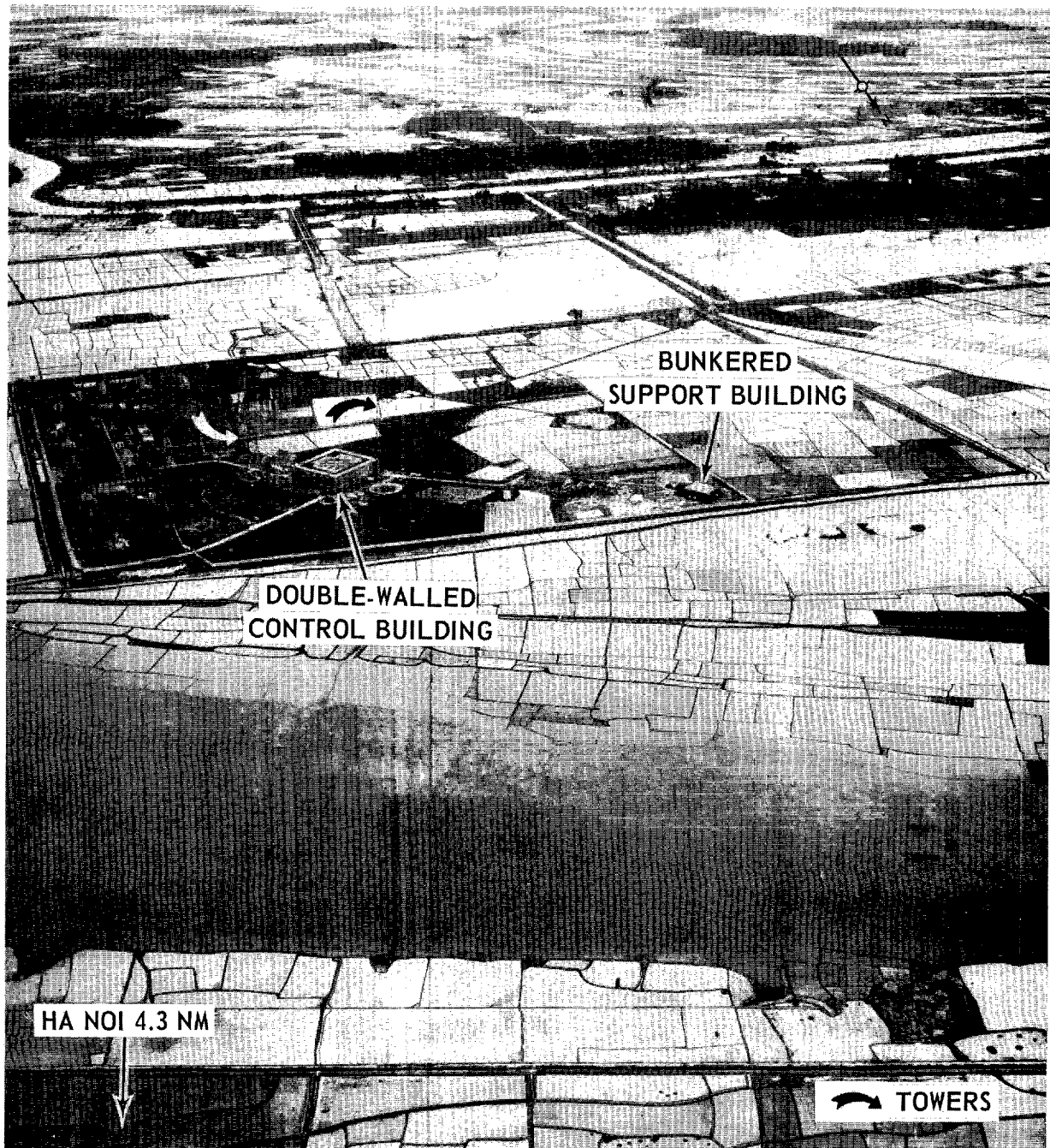
HA NOI RADIO BROADCASTING STATION ME TRI

WJ818216

UTM COORDINATES

20-59-43N 105-47-10E

GEOGRAPHIC COORDINATES



NPIC L-5223 (8/66)

NO FOREIGN DISSEM

25X1C

CONFIDENTIAL

NO FOREIGN DISSEM

BE NUMBER

WJ830194
UTM COORDINATES

20-58-30N 105-47-48E
GEOGRAPHIC COORDINATES

NAME: HA DONG COMMUNICATIONS FACILITY

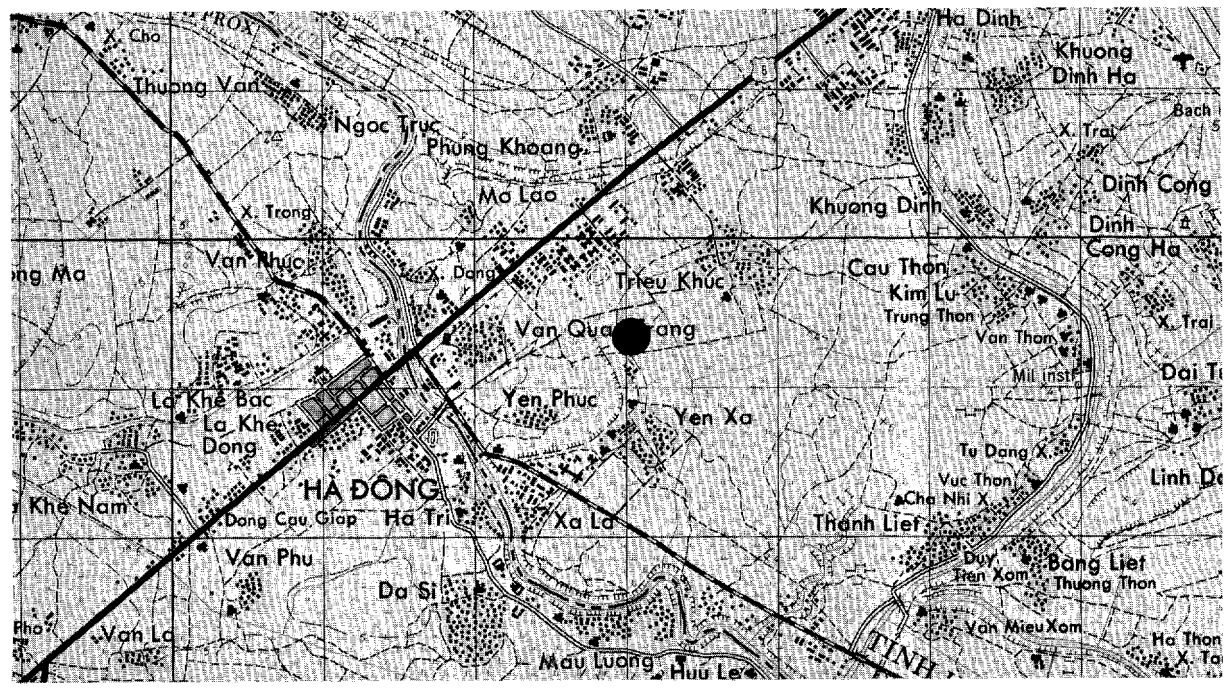
LOCATION: 1.1 NM EAST OF HA DONG AND 3.5 NM SW OF HA NOI

DESCRIPTION: FACILITY CONSISTS OF A CONTROL AREA AND ADJACENT ANTENNA FIELD WITH 1 LARGE AND 1 SMALL DOUBLE RHOMBIC ANTENNAS AND 6 HORIZONTAL DIPOLE ANTENNAS. THE 2 RHOMBICS AND 4 OF THE HORIZONTAL DIPOLES ARE ARRANGED IN PAIRS FOR DAY/NIGHT OPERATIONS.

THE CONTROL AREA IS WALL SECURED AND CONTAINS A CONTROL BUILDING, 6 SUPPORT BUILDINGS, A WATER TOWER, AND A COOLING POND.

25X1D

MAP REFERENCES: AMS SERIES L7014, SHEET 6150-I, 1ST ED, 1965 (U)
AMS SERIES L1501, SHEET NF 48-15, 1ST ED, JUL 65 (U)



CONFIDENTIAL

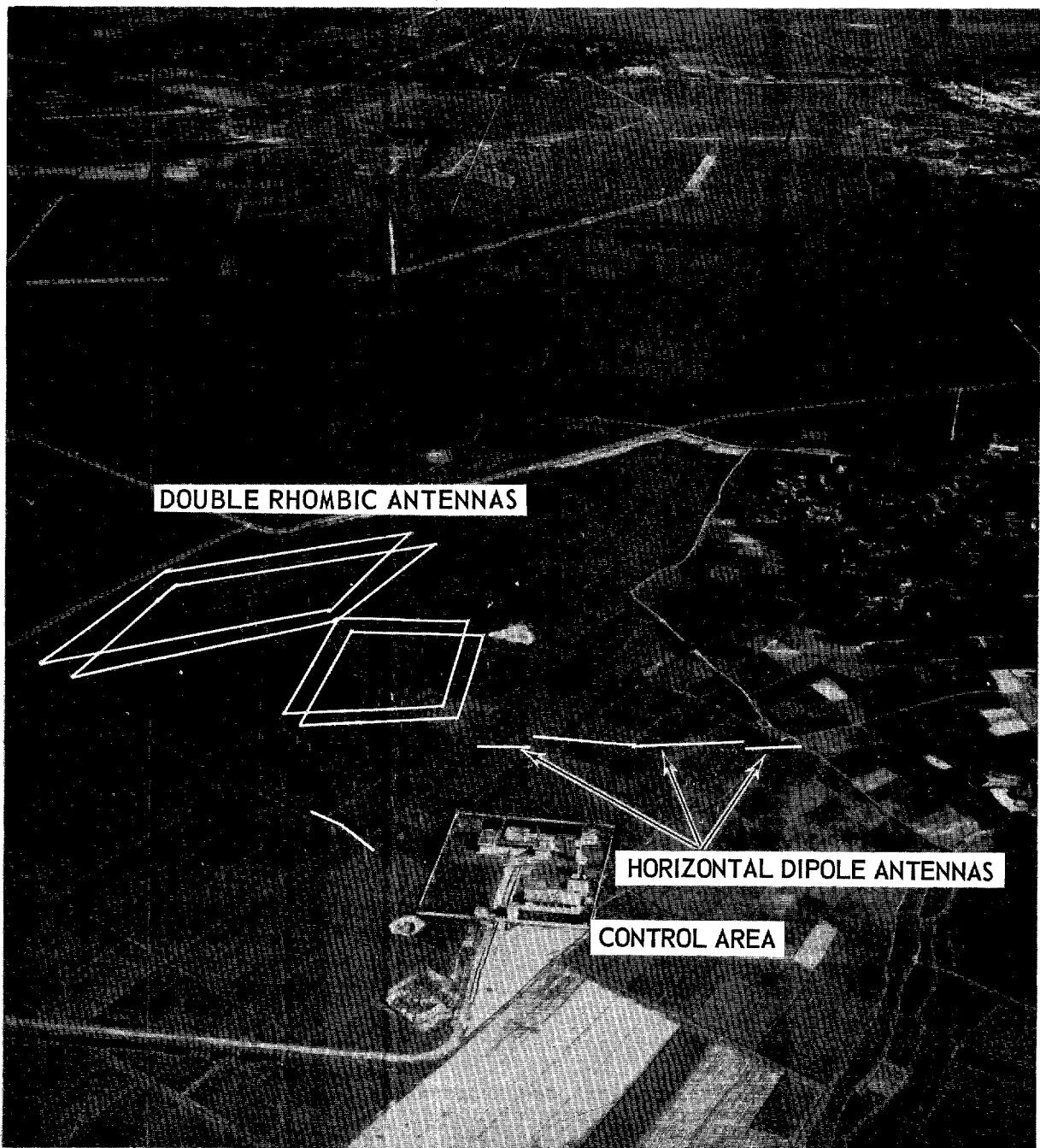
NO FOREIGN DISSEM

25X1C

WJ830194
UTM COORDINATES

HA DONG COMMUNICATIONS FACILITY

20-58-30N 105-47-48E
GEOGRAPHIC COORDINATES



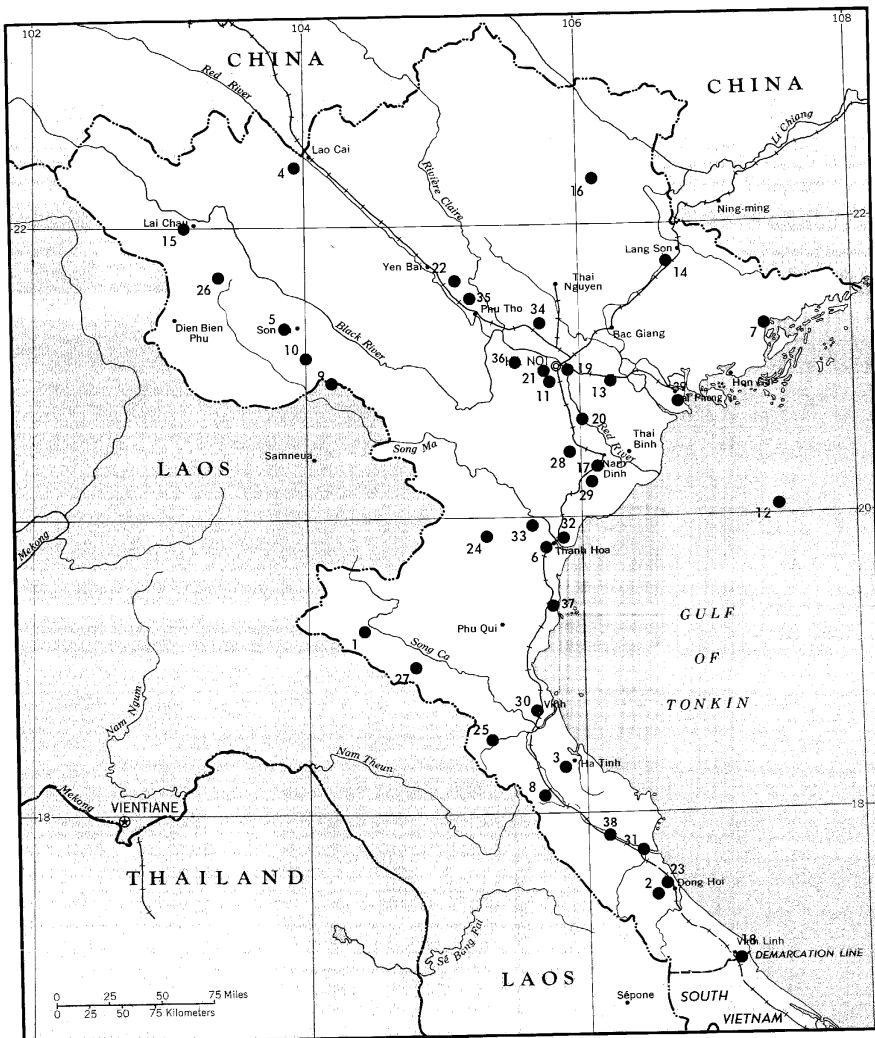
NPIC L-5900 (10/66)

CONFIDENTIAL

25X1C

NO FOREIGN DISSEM

KEY TO CATEGORY C
WEATHER STATIONS



1. Ban Tiane
2. Dong Hoi
3. Ha Tinh
4. Lao Cai
5. Son La
6. Thanh Hoa
7. Tien Yen
8. Chu Le
9. Ban Phat
10. Ban Heo
11. Ha Noi
12. Bach Long Vi Dao
13. Hai Duong
14. Lang Son
15. Lai Chau
16. Cao Bang
17. Nam Dinh
18. Xom Cua (Tung)
19. Hanoi/Gia Lam AF
20. X Tay
21. Yen Lang
22. Trai Hoang Thi
23. Dong Hoi AF
24. Bai Thuong
25. Rao Qua
26. Tuan Giao
27. Xom Don Dien
28. Phu Ly
29. To Cau
30. Vinh
31. Ba Don
32. Nam Huan
33. Binh An
34. Hang Ech
35. Kim Lang
36. Son Tay
37. Cao Trach
38. No Giap
39. Haiphong/Cat Bi AF

CONFIDENTIAL

25X1C

25X1A

CATEGORY C
WEATHER STATIONS

<u>Name</u>	<u>Geographic Coordinates</u>	<u>UTM Coordinates*</u>
Ban Tiane	19-15-38N 104-28-30E	VG447296
Dong Hoi	17-28-55N 106-36-24E	XE706334
Ha Tinh	18-20-33N 105-54-30E	WF959282
Lao Cai	22-28-53N 103-58-54E	UK951862
Son La	21-19-49N 103-54-36E	UJ869589
Thanh Hoa	19-48-24N 105-46-23E	WG811901
Tien Yen	21-19-27N 107-25-03E	YJ508598
Chu Le	18-10-57N 105-42-26E	WF748103
Ban Phat	21-02-54N 104-18-12E	VJ276274
Ban Heo	21-07-48N 104-09-36E	VJ127366
Ha Noi	20-59-59N 105-56-15E	WJ974221
Bach Long Vi Dao**	20-07-55N 107-43-50E	YH853281
Hai Duong	20-56-12N 106-19-15E	XJ373155
Lang Son	21-48-44N 106-46-17E	XK832147
Lai Chau	22-03-54N 103-09-42E	UK104409
Cao Bang	22-39-43N 106-16-06E	XL287064
Nam Dinh	20-25-56N 106-09-29E	XH210595
Xom Cua (Tung)	17-01-14N 107-06-37E	YD248829
Hanoi/Gia Lam Airfield	21-02-29N 105-53-40E	WJ928267
X Tay	20-39-54N 106-03-42E	XH105852
Ha Noi Army Barracks		
West Yen Lang	21-01-25N 105-48-29E	WJ837247
Trai Hoang Thi	21-44-58N 105-02-11E	WK038048
Dong Hoi Airfield**	17-30-32N 106-35-40E	XE691364
Bai Thuong	19-53-54N 105-22-51E	WH398001
Rao Qua Army Barracks	18-27-27N 105-18-52E	WF332407
Tuan Giao	21-35-18N 103-25-25E	UJ369879
Xom Don Dien	19-02-51N 104-53-21E	VG060883
Phu Ly	20-32-26N 105-55-18E	WH962714
To Cau	20-21-40N 106-07-35E	XH177513
Vinh	18-41-17N 105-40-40E	WF714663
Ba Don**	17-45-22N 106-26-11E	XE522636
Nam Huan	19-53-42N 105-56-00E	WH978000
Binh An	19-58-42N 105-39-45E	WH692090
Hang Ech	21-35-36N 105-48-30E	WJ837878
Kim Lang	21-32-02N 105-12-19E	WJ213810
Son Tay	21-07-38N 105-30-49E	WJ533361
Cao Trach	17-49-47N 106-10-23E	XE244716
No Giap	19-26-35N 105-46-55E	WG821499
Haiphong/Cat Bi Airfield	20-49-12N 106-43-42E	XJ797030

*All UTM coordinates are derived from AMS Series L7014, Scale 1:50,000.

**Inactive Station.

RECORD COPY	COPY NO.	PUB. DATE	LOCATION	MASTER	DATE RECEIVED	LOCATION
DISPOSITION DATE(S)				STOCK LEVEL	MINIMUM 1	MAXIMUM 10
CUT TO COPIES 25	DATE 1-69	CUT TO COPIES	DATE	COPIES DESTROYED		
CUT TO COPIES 10	DATE 1-71	CUT TO COPIES	DATE			
CUT TO COPIES 0	DATE 1-73	MASTER	DATE			

DATE			RECEIVED OR ISSUED	NUMBER OF COPIES			DATE			RECEIVED OR ISSUED	NUMBER OF COPIES		
MO.	DAY	YR.		REC'D	ISS'D	BAL	MO.	DAY	YR.		REC'D	ISS'D	BAL
11	2	66	Dist. Unit	51		51	3	13	69	CRS/DH		1	3
2	15	67	NSA		1	50	11	5	69	INVENTORY			7
2	21	67	NPIC		5	40	6	13	72	Archives		1	6
3	22	67	NSA		4	36	10	16	77	Dest 6 Copies			0
6	20	67	NPIC		2	34							
6	30	67	NPIC		10	24							
11	1	67	NPIC		5	19							
3	12	68	NPIC		5	14							
4	23	67	CRS/DLB		1	13							
5	16	68	NSA		1	12							
8	13	68	CRS/DLB		7	5							
12	4	68	NPIC		1	4				25X1C			

TITLE NPIC

R-267/66 SUPP. #2

Oct. 1966

505096

X

