

~~TOP SECRET~~

NPIC/R-515/64

July 1964

TCS-7245/64

Copy 135

6 Pages

PHOTOGRAPHIC INTERPRETATION REPORT

MINSK PETROLEUM STORAGE SOUTH MINSK, USSR BELORUSSIAN MD



CIA



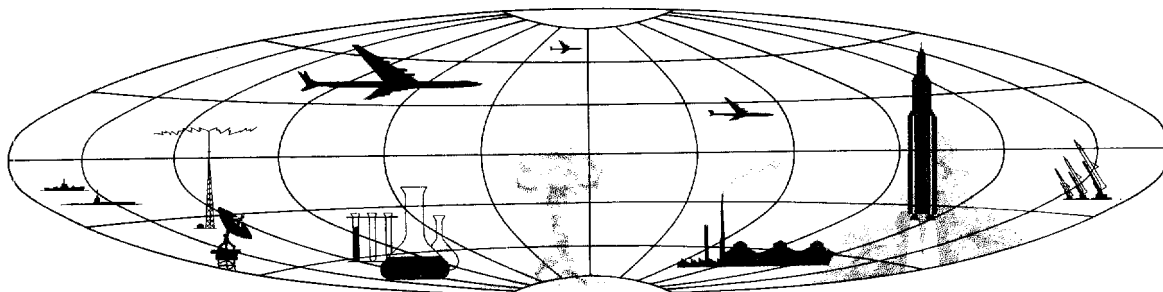
DIA

Handle Via **TALENT - KEYHOLE** Control Only

WARNING

This document contains classified information affecting the national security of the United States within the meaning of the espionage laws U. S. Code Title 18, Sections 793 and 794. The law prohibits its transmission or the revelation of its contents in any manner to an unauthorized person, as well as its use in any manner prejudicial to the safety or interest of the United States or for the benefit of any foreign government to the detriment of the United States. It is to be seen only by personnel especially indoctrinated and authorized to receive TALENT-KEYHOLE information. Its security must be maintained in accordance with KEYHOLE and TALENT regulations.

NATIONAL PHOTOGRAPHIC INTERPRETATION CENTER



~~TOP SECRET~~

GROUP 1
Excluded from automatic
downgrading and declassification

PREFACE

This report is one in a series on Soviet Ground Force and logistic installations being prepared for a DIA/CIA Panel. The series is being coordinated, published and disseminated by NPIC. The photographic analysis is being performed by the NPIC Photographic Analysis Group, the CIA Photographic Intelligence Division (NPIC), and the Production Center 1P1c (DIA). The photographic analysis for this particular report was performed by the NPIC Photographic Analysis Group.

In the interest of uniformity, the titles and letter designators for the facilities observed at these installations are identical with those appearing in the project requirement. When a specific facility is not observed both its title and letter designator are omitted in the report.

Titles and letter designators for the various facilities are as follows: (A) railroad service, (B) road service, (C) landing strips, (D) administrative and troop housing areas, (E) storage areas, (F) ammunition storage areas, (G) POL storage areas, (H) other buildings and facilities, (J) equipment storage/maintenance areas, (K) athletic fields, (L) small arms firing ranges, (M) driver training areas, (N) tank/assault gun firing ranges, (P) flat trajectory firing ranges, (Q) artillery emplacements (batteries), (R) infantry or combined arms field training area or courses, (S) special training facilities, (T) unidentified facilities or tracking activity.

MINSK PETROLEUM STORAGE SOUTH
(53-52N 027-33E)
MINSK, MINSKAYA OBLAST, USSR
BELORUSSIAN MD

25X1A

25X1C

AL No: None

COMOR No: None

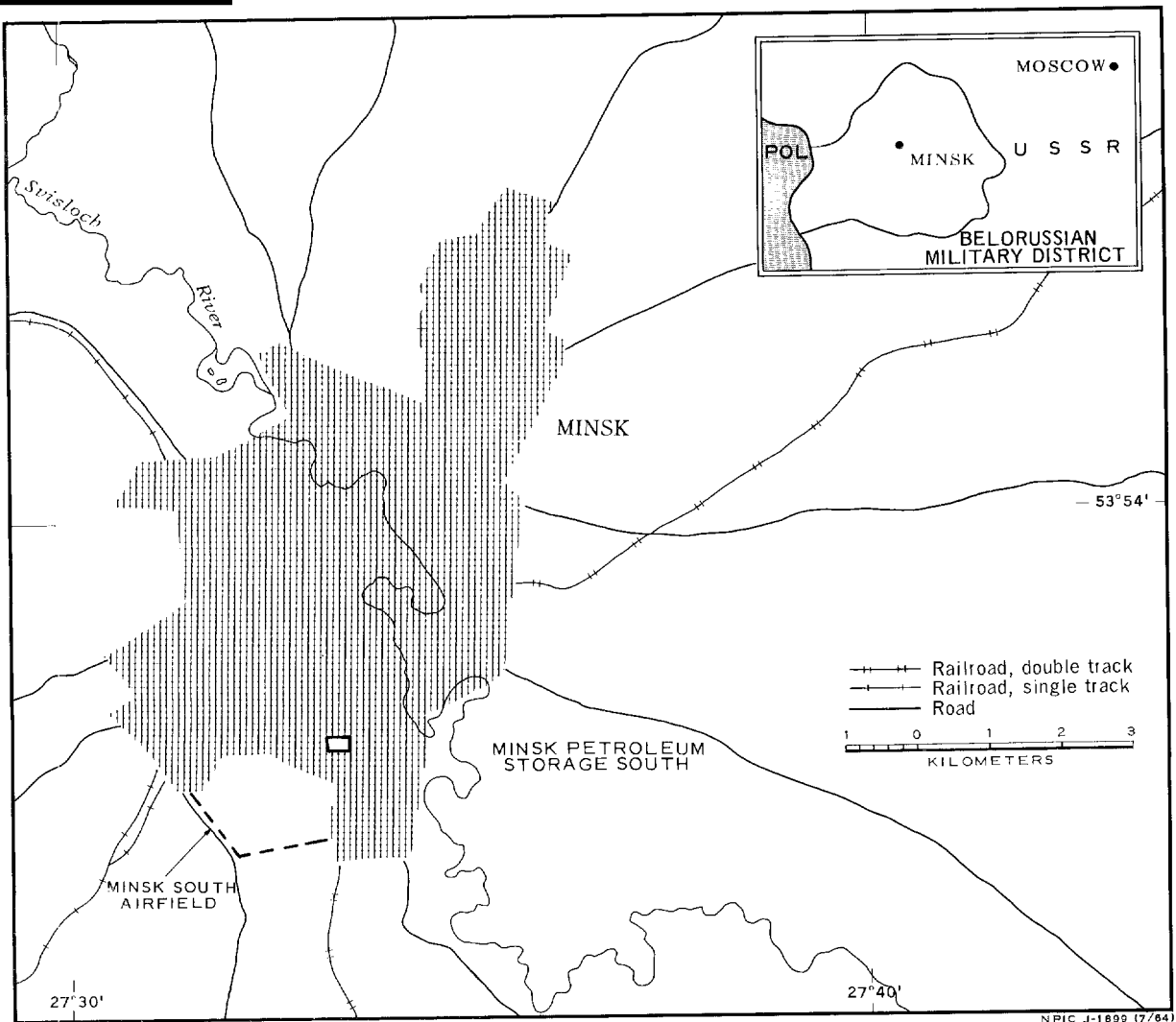


FIGURE 1. LOCATION OF MINSK PETROLEUM STORAGE SOUTH.

SUMMARY 25X1D 25X1D 25X1D 25X1D

Minsk Petroleum Storage South (Figure 1) is located in the southern outskirts of Minsk (53-54N 027-33E). The installation is served by a rail spur from the Minsk-Osipovichi rail line and is served by urban streets. Minsk South Airfield is located 2.2 kilometers (km) southwest. Minsk Army Barracks South South-east (AL-5) is located 1.1 km southeast and Minsk Army Supply Depot and Barracks (AL-7) is located 5.4 km to the east.

The secured installation (Figures 2 and 3) covers 29 acres and contains 33 vertical POL tanks and 11 support buildings.

The installation is covered by [REDACTED] TALENT photography and by KEYHOLE Missions in [REDACTED]. One building and one POL tank have been added since the [REDACTED] coverage. The installation appears to be in active use.

DESCRIPTION OF INSTALLATION

Railroad Service

A spur from the Minsk-Osipovichi rail line serves the installation.

Road Service

Urban streets provide access to the installation.

POL Storage Area

Area G is fenced and contains 33 vertical POL tanks with the following diameters: one 65 feet, one 55 feet, one 45 feet, two 35 feet, four 30 feet, seven 20 feet, seventeen 20 feet. There are also 11 support buildings in the area.

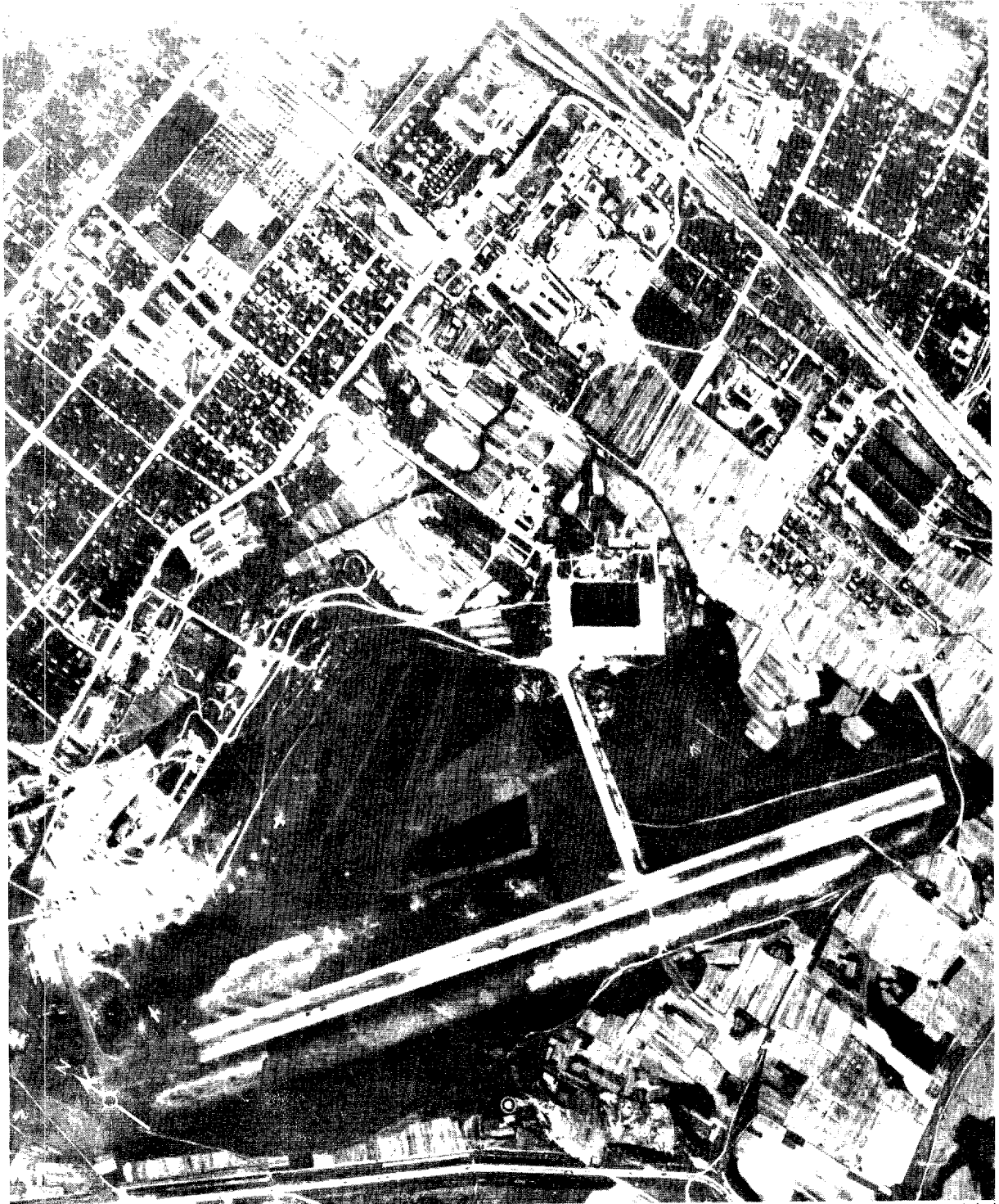


FIGURE 2. MINSK PETROLEUM STORAGE SOUTH, USSR, [REDACTED]

NPIC J-1 900 (7/64)

25X1D

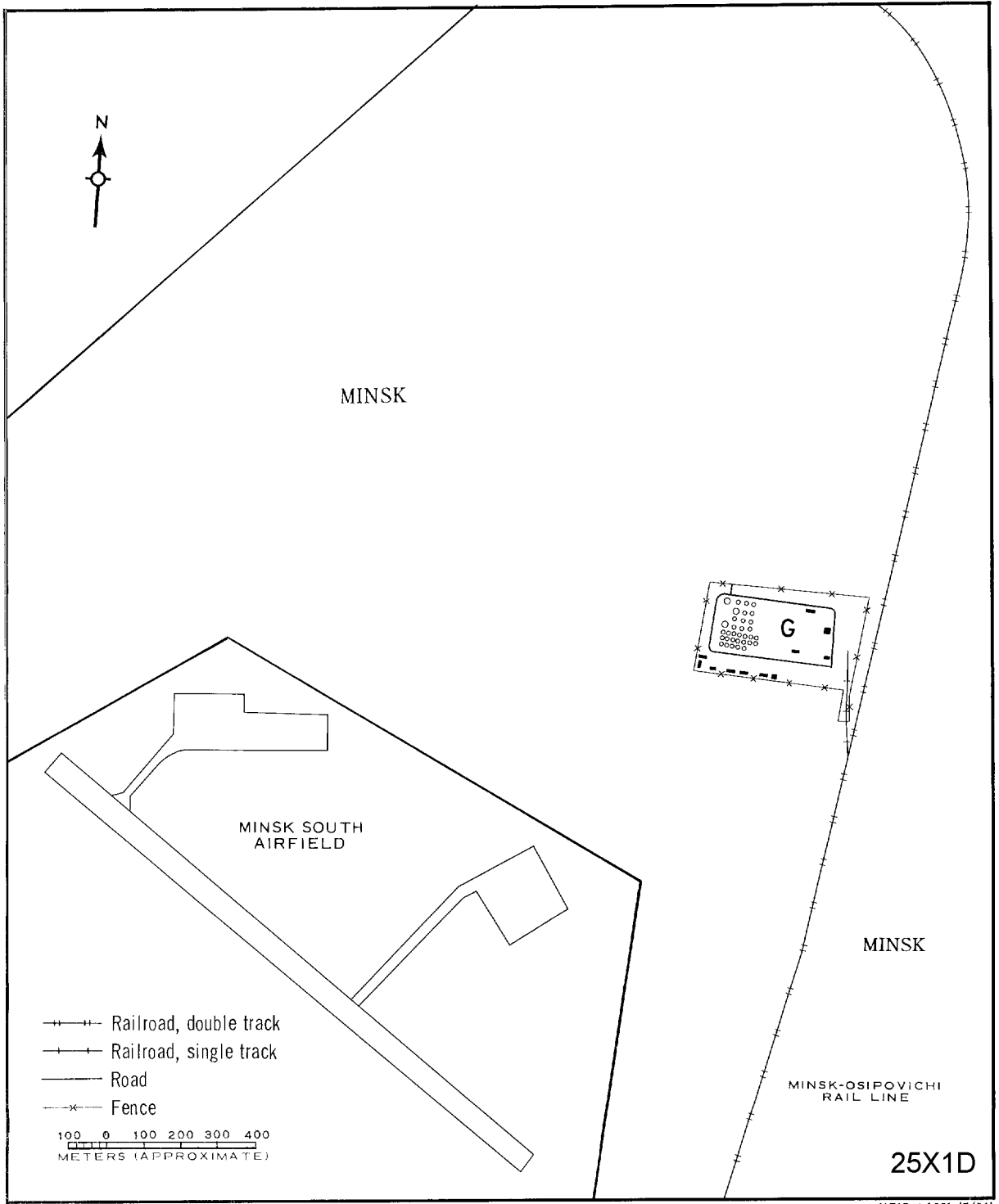
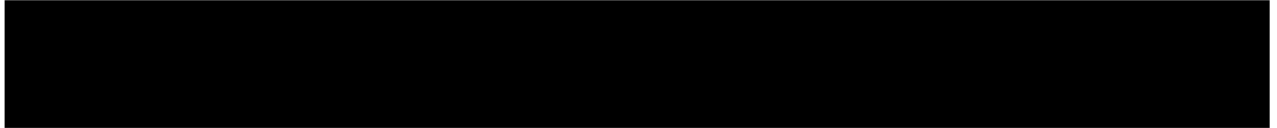


FIGURE 3. MINSK PETROLEUM STORAGE SOUTH. Sketch compiled from Mission

REFERENCES

PHOTOGRAPHY
25X1D



MAPS OR CHARTS

US Target Complex Mosaic, Series 25, Sheet 0168-9997-1-25MA, 3d ed, May 60 (SECRET)

US Air Target Chart, Series 100, Sheet 0168-9997-100A, 2d ed, Feb 52 (CONFIDENTIAL)

25X1C

DOCUMENT

25X1C

DIA. PC 225/1-1-63, *Installations List, Soviet Ground Forces*, 1 Oct 63 (SECRET/No Foreign Dissem)

REQUIREMENT

C-RR4-81,111 (partial answer)

NPIC PROJECT

N-236/64

TOP SECRET
Approved For Release 2000/05/09 : CIA-RDP78B04560A002600010094-7

Approved For Release 2000/05/09 : CIA-RDP78B04560A002600010094-7
TOP SECRET