

~~TOP SECRET~~

2 Pages

NPIC/R-152/64

Copy 106



February 1964

PHOTOGRAPHIC INTERPRETATION REPORT

MILITARY TRAINING AREA
MINSK, USSR
BELORUSSIAN MD



CIA



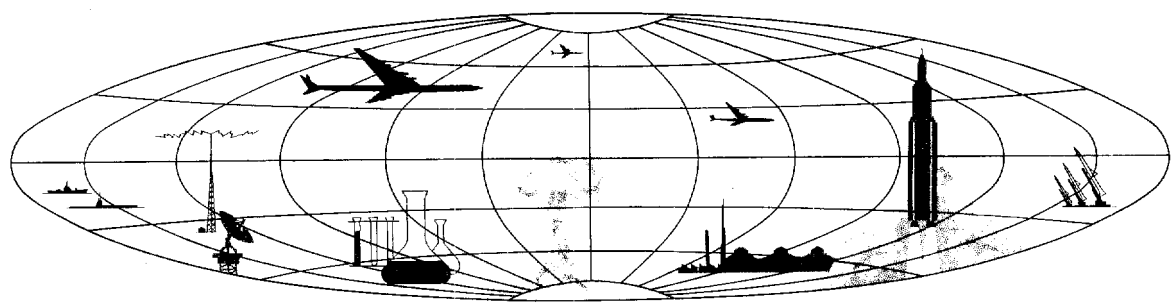
DIA

Handle Via **TALENT - KEYHOLE** Control Only

WARNING
DECLASS REVIEW BY NIMA / DoD

This document contains classified information affecting the national security of the United States within the meaning of the espionage laws U. S. Code Title 18, Sections 793 and 794. The law prohibits its transmission or the revelation of its contents in any manner to an unauthorized person, as well as its use in any manner prejudicial to the safety or interest of the United States or for the benefit of any foreign government to the detriment of the United States. It is to be seen only by personnel especially indoctrinated and authorized to receive TALENT-KEYHOLE information. Its security must be maintained in accordance with KEYHOLE and TALENT regulations.

NATIONAL PHOTOGRAPHIC INTERPRETATION CENTER



TOP SECRET

GROUP 1
Excluded from automatic
downgrading and declassification

MILITARY TRAINING AREA
MINSK, USSR
BELORUSSIAN MD

A training area covering approximately 30,000 acres (Figure 1) is located 5 miles (8 kilometers) east of Minsk at 53-55N 027-45E. It is associated with Minsk Army Barracks Uruchye [REDACTED] and Minsk Army Barracks Kalinina [REDACTED]

25X1A
25X1A

The Minsk-Borisov railroad divides the training area into two parts. The North area contains the barracks areas and the following training facilities: a tracked-vehicle driver training course, a wheeled-vehicle driver training course, three small arms firing ranges [REDACTED] 325, and 1,000 feet long, a moving target tank firing range with a target distance of 3,100 feet (static firing line to target) and at least two 1,900-foot firing lanes, and two infantry combat firing courses with targets at various distances.

25X1D

The South area contains three moving target tank firing ranges, each with a target distance of 3,850 feet and each with three 2,500-foot firing lanes, one moving target tank firing

range with a target distance of 3,100 feet and two 1,550-foot lanes, a 4,000-foot tank stationary firing range, a tracked-vehicle driver training course, a tracked-vehicle driver training area, numerous artillery positions, and a probable combat training area containing numerous trenches and emplacements. Minsk Slepnyanka Airfield and Minsk SAM Support Facility 1 are also located within the South area. Minsk SAM Site A12-2 is located just outside.

A comparative study of [REDACTED] KEYHOLE missions showed no substantial change in facilities or in the high level of usage of the overall area.

25X1D

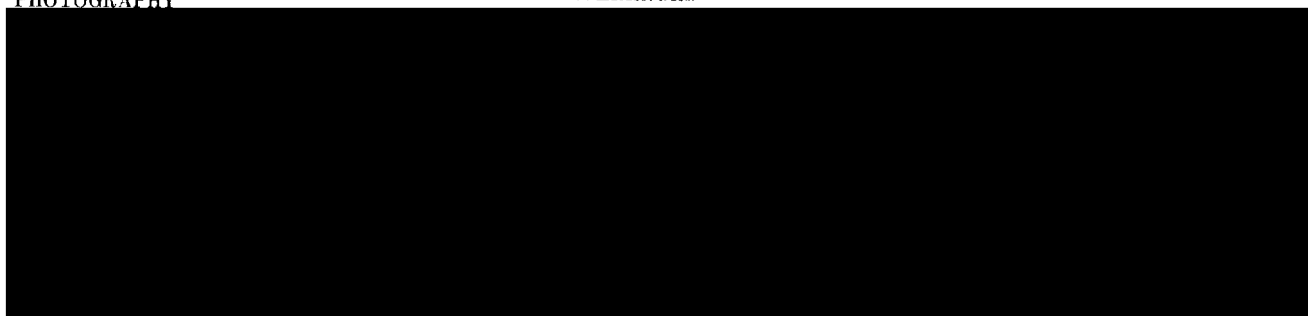
The installation is road and rail served. A secured rectangular area in the North area is served by a rail spur from the Minsk-Borisov railroad with possible rail loading ramps.

No artillery impact areas, bivouac areas, engineer training sites, water-crossing sites, or airborne training facilities were observed.

PHOTOGRAPHY

REFERENCES

25X1D



MAPS OR CHARTS

ACIC. US Air Target Chart, Series 200, Sheet 0168-14HL, 2d ed, Dec 62, Scale 1:200,000 (SECRET)

DOCUMENTS

OACSI, Army. PIB-TK-131-63, Military Installation, Minsk, USSR, 5 Nov 63 (TOP SECRET CHESS RUFF)
OACSI, Army. PIB-TK-132-63, Training Area, Minsk, USSR, 5 Nov 63 (TOP SECRET CHESS RUFF)

REQUIREMENT

DIAXX 63-99 (partial answer)

NPIC PROJECT

J-446/63

NPIC/R-152/64

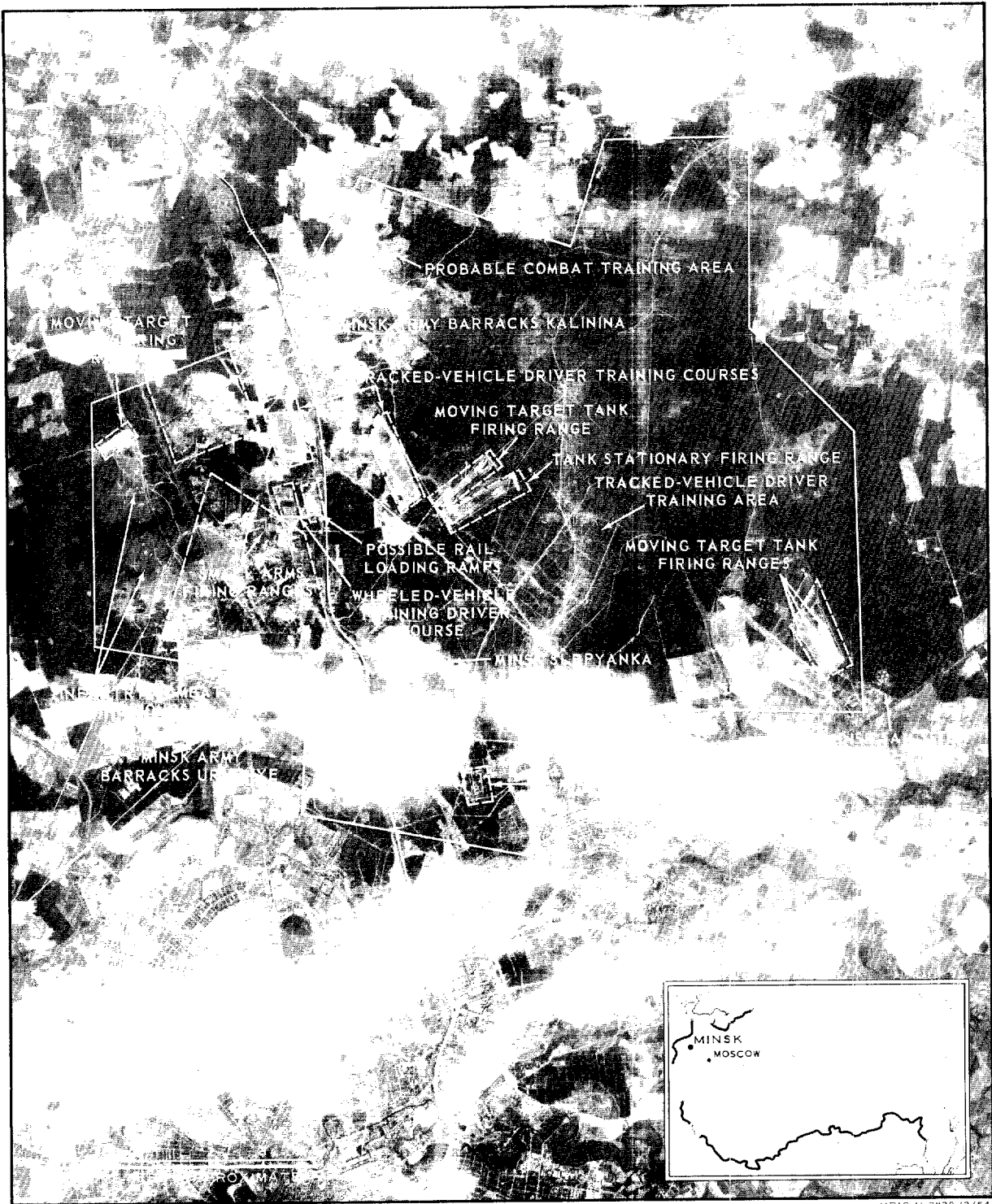


FIGURE 1. MILITARY TRAINING AREA, MINSK, USSR

25X1D

~~TOP SECRET~~

Approved For Release 2001/03/03 : CIA-RDP78B04560A002100010091-5

~~TOP SECRET~~

Approved For Release 2001/03/03 : CIA-RDP78B04560A002100010091-5