

Copy 107
2 Pages

NPIC/R-98/64
February 1964

VITAL RECORDS COPY

PHOTOGRAPHIC INTERPRETATION BRIEF

VLF STATION, VILEYKA, USSR



CIA



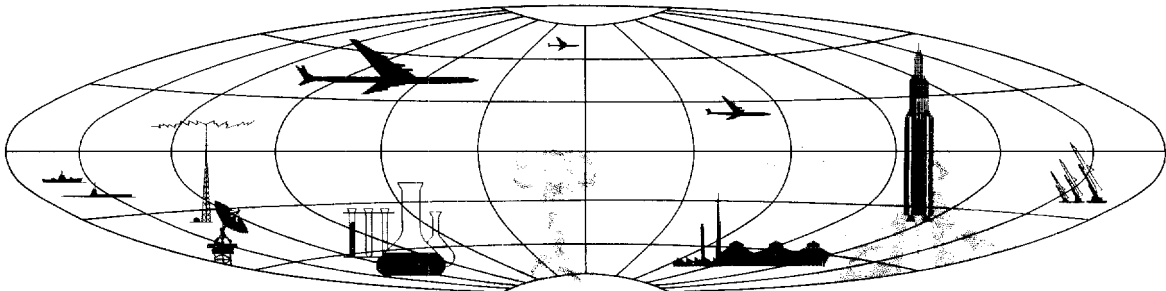
DIA

Handle Via **TALENT - KEYHOLE** Control Only

WARNING

This document contains classified information affecting the national security of the United States within the meaning of the espionage laws U. S. Code Title 18, Sections 793 and 794. The law prohibits its transmission or the revelation of its contents in any manner to an unauthorized person, as well as its use in any manner prejudicial to the safety or interest of the United States or for the benefit of any foreign government to the detriment of the United States. It is to be seen only by personnel especially indoctrinated and authorized to receive TALENT-KEYHOLE information. Its security must be maintained in accordance with KEYHOLE and TALENT regulations.

NATIONAL PHOTOGRAPHIC INTERPRETATION CENTER



TOP SECRET

GROUP 1
Excluded from automatic
downgrading and declassification

NATIONAL PHOTOGRAPHIC INTERPRETATION CENTER PHOTO INTERPRETATION BRIEF

Title: VLF Station, Vileyka, USSR	Geo Coords: 54-27-42N 26-46-40E	COMOR No: None	Publication No: NPIC/R-98/64
	NPIC Target No: 0168-155	BE No: None	Date: 1 February 1964

25X1D

References: USAFIC. Series 200, Sheet 0168-9, 2d ed, Sep 62 (S)
NPIC Project N-67/64 (DIAXX-64-4)

25X1D

25X1D

A VLF transmitting station of enormous extent is located in a marshy area 5 nm WSW of Vileyka and 44 nm NW of Minsk. First observed on photography of [REDACTED], the station was still under construction when last observed on readable coverage of [REDACTED] (Figure 1). The antenna perimeter alone encloses an area of approximately 780 acres. This antenna is within a double-fenced operations area and is composed of 18 towers arranged to form three contiguous hexagonal configurations with a tower in the center of each. These towers probably support an overhead rigging of antenna wire very similar to that of the German GOLIATH antenna. However, it is important to note the tremendous increase in size of this installation over the already sizable GOLIATH, for the Vileyka station

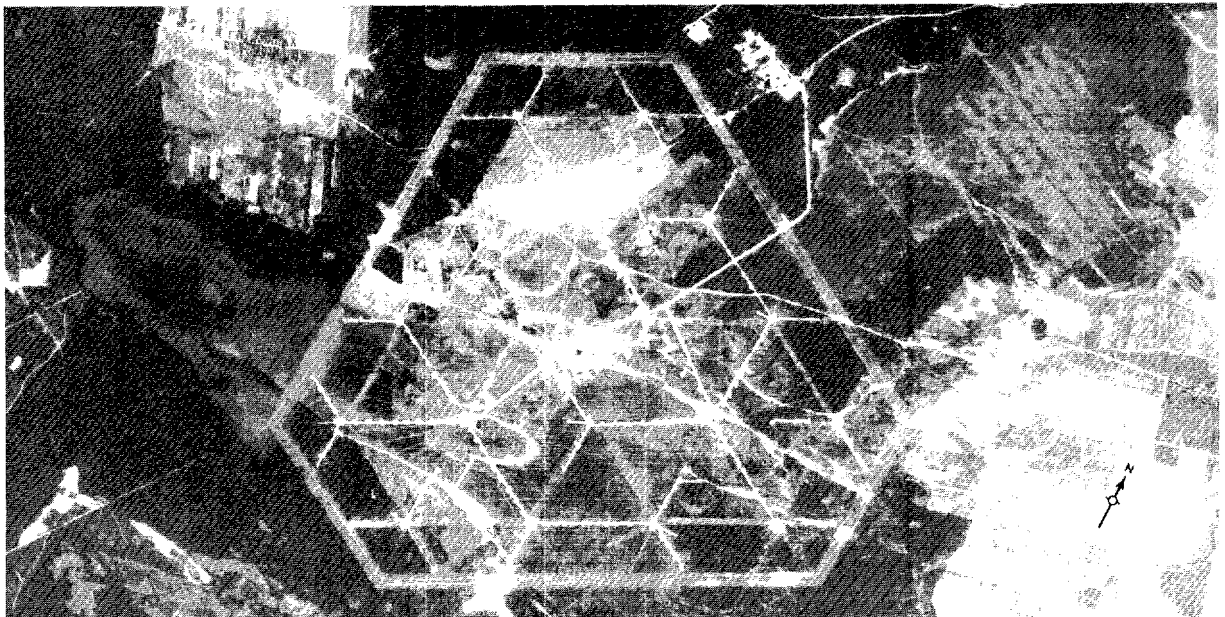
exceeds the GOLIATH by better than 50 percent in all physical aspects, e.g., tower height and separation, overall dimensions. All observable significant detail and obtainable mensuration data are shown on Figure 2, but ground scars which exist throughout the area and relate only to construction activity have not been included.

A support area providing limited facilities is situated just to the north. This area contains a possible power substation and 17 buildings, including one administrative, 3 barracks-type, 5 medium-sized shop/maintenance, and 8 small miscellaneous.

ADDITIONAL REFERENCE

[REDACTED]

25X1D



25X1D

FIGURE 1. VLF STATION NEAR VILEYKA, [REDACTED]

NPIC 11-7596 (2/64)

NPR/R-98/64

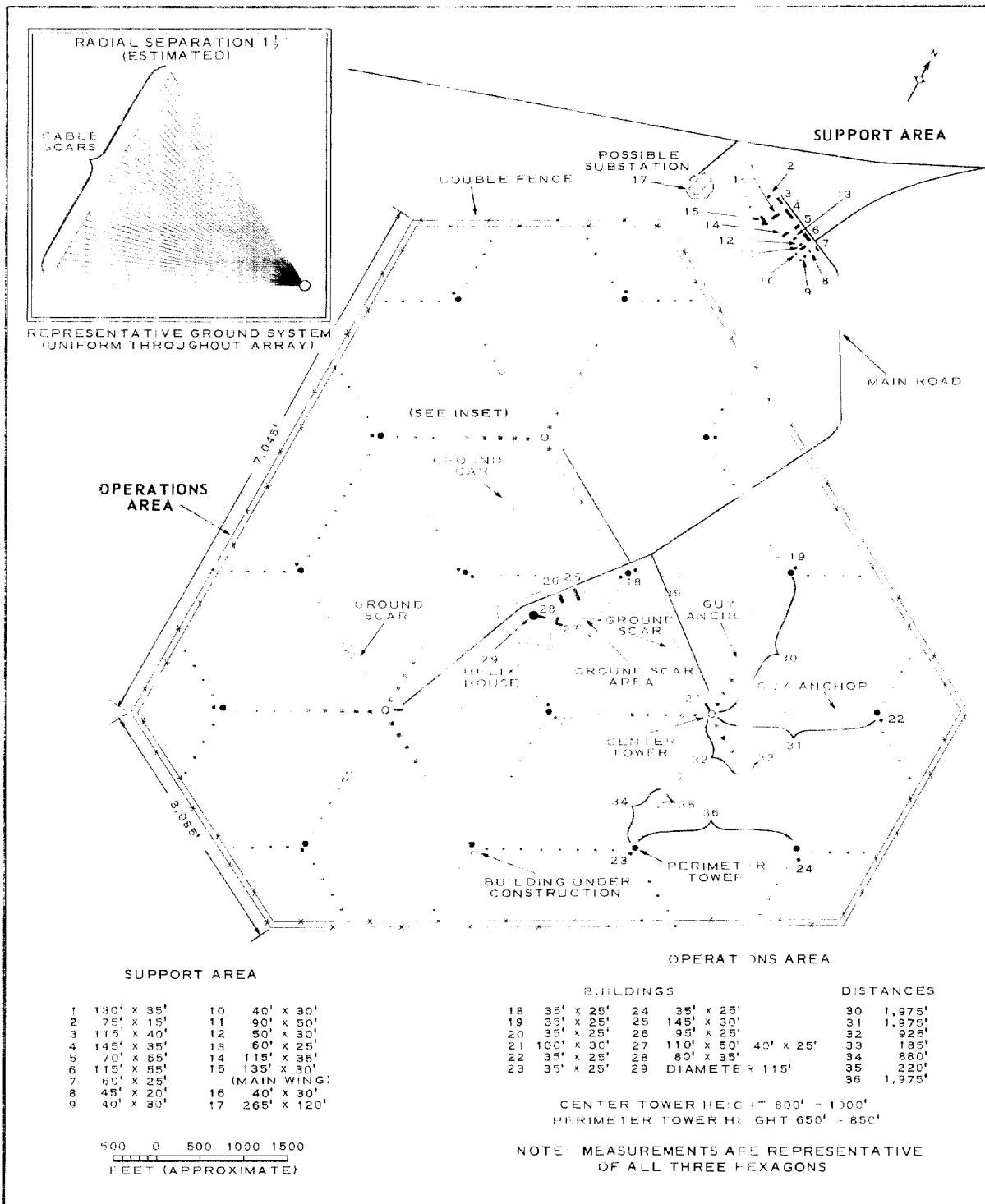


FIGURE 2 LAYOUT OF STATION.

~~TOP SECRET~~

TOP SECRET