

SECRET

Approved For Release 2000/08/04 : CIA-RDP78B04560A001800010020-7



NPIC/R-1544/63

November 1963

PHOTOGRAPHIC INTERPRETATION REPORT

I P I R
BRASS KNOB MISSION 3763
31 OCTOBER 1963

Declass review-NIMA/DOD

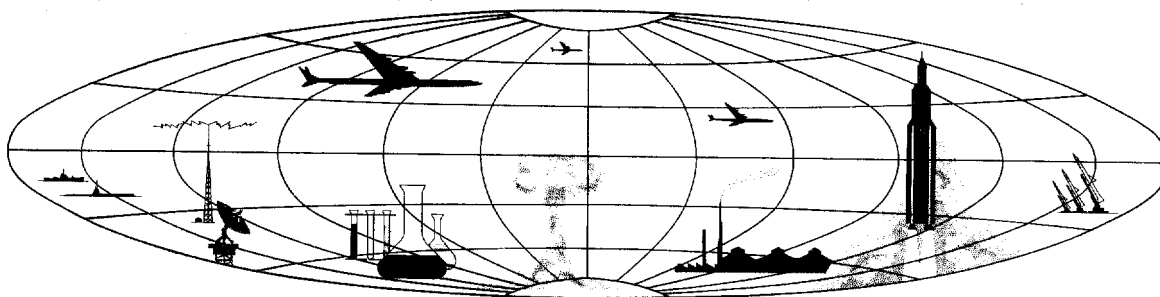


CIA



DIA

NATIONAL PHOTOGRAPHIC INTERPRETATION CENTER



Approved For Release 2000/08/04 : CIA-RDP78B04560A001800010020-7

SECRET

GROUP 1
Excluded from automatic
downgrading and declassification



WARNING

This document contains information affecting the national defense of the United States, within the meaning of Title 18, sections 793 and 794, of the U.S. Code, as amended. Its transmission or revelation of its contents to or receipt by an unauthorized person is prohibited by law.

~~SECRET~~

NPIC/R-1544/63

NATIONAL PHOTOGRAPHIC INTERPRETATION CENTER

IMMEDIATE PHOTOGRAPHIC INTERPRETATION REPORT

THE FOLLOWING INFORMATION REPRESENTS A PRELIMINARY ANALYSIS OF AERIAL PHOTOGRAPHY FROM BRASS KNOB MISSION 3763, DATED 31 OCT 1963. THE NUMBER APPEARING AT THE END OF THE HEADER LINE IS THE COMOR TARGET NUMBER.

SYMBOLS USED TO INDICATE CONDITIONS WHICH AFFECT THE APPEARANCE OF THE TARGET ON THE PHOTOGRAPHY ARE AS FOLLOWS -- C (CLEAR), SC (SCATTERED CLOUDS), HC (HEAVY CLOUDS), H (HAZE), CS (CLOUD SHADOW), SD (SEMIDARKNESS), O (OBLIQUITY), PQ (POOR IMAGE QUALITY).

FOR ITEM OF SPECIAL INTEREST SEE --
SIGUANEA CRUISE-MISSILE SITE

-MISSILES-

GUANAJAY IRBM SITE 1 2256N 08239W

NO MILITARY ACTIVITY OBSERVED.

25X1D



GUANAJAY IRBM SITE 2 2257N 08237W

NO MILITARY ACTIVITY OBSERVED.

25X1D



TAPASTE AREA, STORAGE SITES 2303N 08207W

NO APPARENT CHANGE IN FACILITIES.
NO VEHICLES OBSERVED.

25X1D



25X1A



~~SECRET~~

SECRET

NPIC/R-1544/63

25X1A

SANTA LUCIA SAM SITE 2241N 08355W

SITE APPEARS ABANDONED.
NO ACTIVITY OBSERVED.

25X1D

SAN JULIAN AIRFIELD SAM SITE 2205N 08408W

SITE 1 -- 6 REVETTED CANVAS-COVERED LAUNCHERS, 5
CANVAS-COVERED MISSILE TRANSPORTERS, AND AN OCCUPIED
GUIDANCE REVETMENT.
SITE 2 -- 6 UNRETTED LAUNCH POSITIONS, ONE MISSILE
TRANSPORTER, AND AN OCCUPIED GUIDANCE AREA.
OBLIQUITY LIMITS FURTHER INTERPRETATION.

25X1D

MARIEL SAM SITE 2300N 08249W

SIX REVETTED LAUNCHERS, 7 CANVAS-COVERED MISSILE
TRANSPORTERS, AND AN OCCUPIED GUIDANCE REVETMENT
OBSERVED.
HAZE AND SCATTERED CLOUDS LIMIT INTERPRETATION.

25X1D

MATANZAS SAM SITE 2301N 08129W

SIX UNRETTED LAUNCHERS (3 CANVAS-COVERED), 4 MISSILE
TRANSPORTERS (2 CANVAS-COVERED, 2 WITH CANVAS-COVERED
PRIME MOVERS), 2 POSSIBLE MISSILE TRANSPORTERS WITHOUT
PRIME MOVERS, AT LEAST 12 CANVAS-COVERED TRACKED
PRIME MOVERS, 5 VAN TRAILERS, 3 CANVAS-COVERED
VEHICLES OR PIECES OF EQUIPMENT, 2 UNIDENTIFIED
VEHICLES AND AN OCCUPIED GUIDANCE AREA OBSERVED.

25X1D

HAVANA SAM SITE 2309N 08213W

SIX UNRETTED LAUNCHERS, 4 PROBABLE MISSILE
TRANSPORTERS (3 CANVAS-COVERED), 13 PROBABLE TRACKED
PRIME MOVERS, 4 PROBABLE VAN TRAILERS, AND AN OCCUPIED
GUIDANCE AREA WITH PROBABLE RADAR AND CANVAS-COVERED

SECRET

SECRET

NPIC/R-1544/63

EQUIPMENT OBSERVED.

25X1D

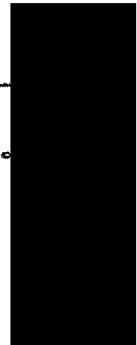


25X1A

CIENFUEGOS SAM SITE 2202N 08024W

SIX UNRETTED LAUNCHERS (2 WITH MISSILES, 3 CANVAS-COVERED), 3 CANVAS-COVERED HOLD AREAS, ONE TRACKED PRIME MOVER, AND AN OCCUPIED GUIDANCE AREA OBSERVED.

25X1D



SAGUA LA GRANDE SAM SITE 2251N 08005W

SIX RETTTED LAUNCHERS AND A CANVAS-COVERED GUIDANCE RETTMENT OBSERVED. SCATTERED CLOUDS AND CLOUD SHADOW LIMIT FURTHER INTERPRETATION.

25X1D



25X1A

SIGUANEA SAM SITE 2137N 08257W

FIVE RETTTED LAUNCHERS (3 CANVAS-COVERED, 2 WITH MISSILES), 3 CANVAS-COVERED MISSILE TRANSPORTERS, ONE MISSILE ON DOLLY, AN UNDETERMINED NUMBER OF TRACKED PRIME MOVERS AND MISSILE CANISTERS, AND AN OCCUPIED GUIDANCE AREA. NW AREA -- NO APPARENT CHANGE IN FACILITIES. TWELVE FA PIECES. SSE AREA -- NO APPARENT CHANGE IN FACILITIES. AT LEAST 5 CARGO TRUCKS.

25X1D



25X1A

DELEITE SAM SITE 2259N 08045W

SIX RETTTED LAUNCHERS (2 WITH MISSILES, AT LEAST 3 CANVAS-COVERED), 11 CANVAS-COVERED TRACKED PRIME MOVERS, 2 PROBABLE VAN TRAILERS, 3 UNIDENTIFIED VEHICLES AND AN OCCUPIED GUIDANCE RETTMENT OBSERVED.

25X1D



SECRET

SECRET

NPIC/R-1544/63

25X1A

SANTIAGO DE LAS VEGAS SAM ASSEMBLY AREA 2257N 08221W

APPROXIMATELY 20 MISSILE TRANSPORTERS, 14 UNIDENTIFIED TRAILERS, AND APPROXIMATELY 20 UNIDENTIFIED VEHICLES OBSERVED.

25X1D

25X1A

PINAR DEL RIO SAM ASSEMBLY AREA 2221N 08339W

NINETEEN MISSILE TRANSPORTERS, 2 PRIME MOVERS, 5 TRACTOR-TRAILER TRUCKS, 3 TRUCK-MOUNTED CRANES, AND 3 OTHER VEHICLES OBSERVED. NO APPARENT CHANGE IN FACILITIES.

25X1D

25X1A

CIFUENTES SAM ASSEMBLY AREA 2236N 08005W

FOUR PROBABLE FLATBED TRAILERS AND AT LEAST 10 POSSIBLE MISSILE TRANSPORTERS OBSERVED.

25X1D

MANAGUA SAM SITE 2259N 08215W

AT LEAST 4 REVETTED LAUNCHERS, 5 CANVAS-COVERED MISSILE TRANSPORTERS, AND RADAR AND ASSOCIATED EQUIPMENT OBSERVED IN GUIDANCE REVETMENT. SEMI-DARKNESS LIMITS INTERPRETATION.

25X1D

MAJANA SAM SITE 2241N 08249W

SIX UNREVETTED LAUNCHERS (3 WITH MISSILES), ONE CANVAS-COVERED MISSILE TRANSPORTER, 5 TRACKED PRIME MOVERS, 3 VAN TRAILERS, AND AN UNREVETTED GUIDANCE AREA WITH RADAR AND CANVAS-COVERED EQUIPMENT OBSERVED.

25X1D

SECRET

SECRET

NPIC/R-1544/63

25X1A

LA COLOMA SAM SITE 2 2219N 08334W

SIX UNREVIEWED LAUNCHERS (3 CANVAS-COVERED, 2 WITH MISSILES), 3 CANVAS-COVERED MISSILE TRANSPORTERS, 10 TRACKED PRIME MOVERS, ONE CARGO TRUCK, 3 VAN TRAILERS, AND AN OCCUPIED GUIDANCE AREA OBSERVED.

25X1D

LA SALUD SAM SITE 2253N 08224W

SIX UNREVIEWED LAUNCHERS, 6 MISSILE TRANSPORTERS, 16 UNIDENTIFIED VEHICLES, AND AN OCCUPIED GUIDANCE AREA OBSERVED.

25X1D

PUNTA BRAVA SAM SITE 2301N 08231W

SIX UNREVIEWED LAUNCHERS, 7 PROBABLE CANVAS-COVERED MISSILE TRANSPORTERS, 7 PROBABLE VAN TRAILERS, 8 PROBABLE TRACKED PRIME MOVERS, 3 CARGO TRUCKS, AND A GUIDANCE AREA WITH PROBABLE RADAR, 2 LARGE AND 4 SMALL VANS OBSERVED.

25X1D

25X1A

GUARA SAM SITE 2248N 08213W

SIX UNREVIEWED LAUNCHERS, 4 MISSILE TRANSPORTERS, AT LEAST 10 CANVAS-COVERED TRACKED PRIME MOVERS, 5 CANVAS-COVERED VAN TRAILERS, 3 UNIDENTIFIED VEHICLES AND AN OCCUPIED GUIDANCE AREA OBSERVED.

25X1D

25X1A

TORRENS SAM ASSEMBLY AREA 2257N 08227W

APPROXIMATELY 25 MISSILE TRANSPORTERS, NUMEROUS MISSILE CANISTERS, 5 PROBABLE FLATBED TRAILERS, AND APPROXIMATELY 20 UNIDENTIFIED VEHICLES OBSERVED.

25X1D

SECRET

SECRET

NPIC/R-1544/63
25X1A

SIGUANEA CRUISE-MISSILE SITE 2137N 08258W

TWO REVETTED CANVAS-COVERED LAUNCHERS, 8 CANVAS-COVERED CRUISE-MISSILE CRATES, 6 CANVAS-COVERED CRUISE-MISSILE TRANSPORTERS, 3 CANVAS-COVERED HOLD POSITIONS, ONE CRUISE-MISSILE ON TRANSPORTER, AND 5 CARGO TRUCKS OBSERVED.
NO APPARENT CHANGE IN FACILITIES.
(SEE ATTACHMENT 1).

25X1D

SANTA CRUZ DEL NORTE CRUISE-MISSILE SITE 2309N 08156W

TWO UNRETTED LAUNCHERS OBSERVED.
HAZE LIMITS INTERPRETATION.

25X1D

CAMPO FLORIDO CRUISE-MISSILE SITE 2306N 08211W

TWO UNRETTED LAUNCHERS, 7 PROBABLE MISSILE TRANSPORTERS, AND CANVAS-COVERED GUIDANCE EQUIPMENT OBSERVED.

25X1D

-AIRFIELDS-

CAMILO CIENFUEGOS AIRFIELD 2229N 07955W

AIRCRAFT -- 2 FISHBED, 2 FARMER, 8 FAGOT/FRESCO, AND 4 HOUND OBSERVED IN CLOUD-FREE AREAS.

25X1D

SIGUANEA AIRFIELD 2138N 08257W

AIRCRAFT -- ONE CRATE.

25X1D

SECRET

SECRET

NPIC/R-1544/63
25X1A

CORONEL PASCUAL AIRFIELD 2307N 08117W

AIRCRAFT -- ONE POSSIBLE LIAISON.

25X1D

SAN ANTONIO DE LOS BANOS AIRFIELD 2252N 08231W

AIRCRAFT -- 31 FISHBED, 2 FARMER, AND 20 FAGOT/FRESCO.

25X1D

SAN JULIAN AIRFIELD 2205N 08409W

AIRCRAFT -- 2 PROBABLE FAGOT/FRESCO.

25X1D

JOSE MARTI INTERNATIONAL AIRFIELD 2259N 08224W

OPERATIONS AREA -- ONE CLEAT, ONE BRITANNIA, 3 COOT,
3 CONSTELLATION, 3 C-54, ONE C-46, ONE C-47, ONE
CRATE, ONE PROBABLE CRATE, ONE LIAISON.
MAINTENANCE AREA -- ONE C-54, 5 C-46, 2 CRATE, ONE
B-26, ONE LODESTAR, AND ONE LIAISON.

25X1D

CAMPO LIBERTAD AIRFIELD 2306N 08226W

AIRCRAFT -- ONE FAGOT/FRESCO, ONE PBY, ONE CRATE,
ONE C-46, 2 C-47, 4 COLT, 58 LIAISON. AT LEAST
19 UNIDENTIFIED CRATES (THE LARGEST APPROXIMATELY
OBSERVED IN AREA.

25X1D

25X1D

PLAYA BARACOA AIRFIELD 2302N 08235W

AIRCRAFT -- 33 HOUND (17 WITHOUT ROTORS), 3 HARE,
AND 2 BELL HELICOPTERS.
PHOTO GAP PRECLUDES FURTHER INTERPRETATION.

SECRET

SECRET

NPIC/R-1544/63

25X1D



25X1A

COLONEL MARTIN MARRERRO AIRFIELD 2150N 08247W

NO AIRCRAFT OBSERVED.
FIVE POSITIONS OF 6-GUN AAA SITE ARE OCCUPIED.

25X1D



JAIME GONZALES AIRFIELD 2209N 08025W

NO AIRCRAFT OBSERVED IN CLOUD-FREE AREAS.

25X1D



PINAR DEL RIO AIRFIELD 2225N 08341W

AIRCRAFT -- ONE COLT AND ONE LIAISON.

25X1D



-PORTS-

MARIEL NAVAL BASE AND NAVAL AIR STATION 2301N 08245W

25X1D

VESSELS -- 4 KOMAR-CLASS PGMG AND ONE PF
OBSERVED IN CLOUD-FREE AREAS.

25X1D



CABANAS NAVAL FACILITY 2258N 08258W

VESSELS -- 4 KOMAR-CLASS PGMG, 3 P-4 MTB, AND 2 PC.
AREA 1 -- NO APPARENT CHANGE IN FACILITIES. EIGHTEEN
VEHICLES.
AREA 2 -- CONSTRUCTION AREA TO WEST CONTAINS ONE
LARGE, 2 LARGE AND ONE MEDIUM TENT (NONE OF A KNOWN
SOVIET TYPE).
AREA 3 -- 2 LARGE BUILDINGS, 3 BARRACKS, ONE SUPPORT
BUILDING, ONE LARGE TENT, APPROXIMATELY 25 VEHICLES,
AND 7 CRATES.
AREA 4 -- NO APPARENT CHANGE IN FACILITIES.
AREA 5 -- ONE SECURED BUILDING, 3 BARRACKS, 6
DWELLINGS, 2 LARGE AND 2 MEDIUM TENTS AND 14 VEHICLES.

SECRET

SECRET

NPIC/R-1544/63

25X1D



25X1A

CIENFUEGOS PORT 2209N 08027W

VESSELS -- ONE PF, ONE KRONSHADT-CLASS PC, ONE PC,
4 PT, ONE LARGE FREIGHTER, ONE LARGE TANKER, AND 4
COASTAL TANKERS IN CLOUD-FREE AREAS.

25X1D



NUEVA GERONA PORT 2153N 08248W

ONE FERRY AND NUMEROUS SMALL CRAFT OBSERVED.

25X1D



LA ISABELA PORT 2256N 08001W

ONE LARGE UNIDENTIFIED VESSEL OBSERVED IN
CLOUD-FREE AREAS.

25X1D



CARDENAS PORT 2302N 08112W

VESSELS -- ONE COASTAL FREIGHTER.

25X1D



SANTA LUCIA PORT 2240N 08358W

NO LARGE VESSELS OBSERVED.

25X1D



MATANZAS PORT 2303N 08134W

ONE LARGE FREIGHTER OBSERVED IN CLOUD-FREE AREAS.

25X1D



SECRET

SECRET

NPIC/R-1544/63
25X1A

SURGIDERO DE BATABAND PORT 2241N 08218W

NO LARGE VESSELS OBSERVED.

25X1D

HAVANA PORT 2308N 08221W

VESSELS -- 2 PF, 2 KRONSHADT-CLASS PC, 2 PCE,
3 KOMAR-CLASS PGMG (ONE ON MARINE RAILWAY), 2 PT,
33 LARGE FREIGHTERS (ONE IN DRYDOCK AND ONE LEAVING
PORT), 6 COASTAL FREIGHTERS, 2 LARGE TANKERS, ONE
COASTAL TANKER, AND 3 TRAWLERS.

25X1D

LA COLOMA PORT 2214N 08334W

NO LARGE VESSELS OBSERVED.

25X1D

CABANAS PORT 2259N 08256W

VESSELS -- NONE OBSERVED.
(SEE CABANAS NAVAL FACILITY.)

25X1D

BAHIA HONDA PORT 2255N 08311W

NO LARGE VESSELS OBSERVED IN CLOUD-FREE AREAS.

25X1D

SIGUANEA BOAT BASIN 2137N 08258W

VESSELS -- 3 PT.

25X1D

SECRET

SECRET

NPIC/R-1544/63

25X1A

-ELECTRONICS-

HAVANA COMMUNICATIONS CENTER 2301N 08225W

NO APPARENT CHANGE IN FACILITIES.
NINETEEN VEHICLES OBSERVED.

25X1D

-MILITARY ACTIVITY-

PINAR DEL RIO MILITARY CAMP 2223N 08342W

NO APPARENT CHANGE IN FACILITIES.
APPROXIMATELY 40 VEHICLES OBSERVED.

25X1D

LA FLORA MILITARY STORAGE 2252N 08233W

NO APPARENT CHANGE IN FACILITIES.
SEVENTEEN VEHICLES OBSERVED.

25X1D

ARTEMISA MILITARY CAMP 2251N 08248W

SIXTY-FIVE LARGE (56 NOT OF A KNOWN SOVIET TYPE)
AND 5 MEDIUM TENTS (NONE OF A KNOWN SOVIET TYPE),
80 UNIDENTIFIED VEHICLES AND 10 PROBABLE FA PIECES
OBSERVED.

25X1D

SANTIAGO DE LAS VEGAS AREA, MILITARY CAMP 2258N 08220W

TWENTY-THREE POSSIBLE TANKS/SP GUNS, 8 POSSIBLE
FROG MISSILE TRANSPORTERS, AND APPROXIMATELY 35
UNIDENTIFIED VEHICLES OBSERVED.

25X1D

SECRET

SECRET

NPIC/R-1544/63
25X1A

SAN JOSE DE LAS LAJAS CAMP AND DEPOT 2255N 08210W

NO APPARENT CHANGE IN FACILITIES.
NO VEHICLES OBSERVED.

25X1D

TORRENS MILITARY COMPLEX 2259N 08228W

NO APPARENT CHANGE SINCE

25X1D

25X1D

SANTA CLARA AREA, MILITARY ACTIVITY 2221N 07957W

EIGHTEEN TANKS/SP GUNS OBSERVED IN CLOUD-FREE AREAS

25X1D

LIMONAR MILITARY CAMP SE 2255N 08124W

MAIN CAMP -- 20 LARGE (6 NOT OF A KNOWN SOVIET TYPE),
19 MEDIUM (4 NOT OF A KNOWN SOVIET TYPE) AND 6 SMALL
TENTS OBSERVED. AT LEAST 69 VEHICLES OBSERVED.
AREA .5 NM WEST -- ONE LARGE AND 2 SMALL TENTS, 19
VAN TRUCKS, ONE VAN TRAILER AND ONE POSSIBLE VAN
TRAILER OBSERVED.
SEMI-DARKNESS LIMITS FURTHER INTERPRETATION.

25X1D

25X1A

MANAGUA MILITARY CAMP 2258N 08217W

EIGHT HOUND, 2 HARE, 11 PROBABLE TANKS/SP GUNS,
APPROXIMATELY 60 PROBABLE 8-WHEELED APC, 25
LOWBOY TRAILERS, AND APPROXIMATELY 350 OTHER
VEHICLES OBSERVED.

25X1D

GUANE AREA, PROBABLE TANK TRAINING COURSE 2215N 08409W

NO ACTIVITY OR EQUIPMENT OBSERVED.

SECRET

25X1D



25X1A

SANTA FE MILITARY CAMP LUMUMBA 2142N 08249W
TEN CARGO TRUCKS OBSERVED.



25X1D



NAZARENO, MILITARY AREA 2258N 08214W
FIFTEEN PROBABLE TANKS/SP GUNS OBSERVED.

25X1D



BAJURAYABO AREA, MILITARY CAMP 2308N 08210W
THIRTY-THREE VEHICLES, 12 FA PIECES, AND 6 UNIDENTIFIED OBJECTS OBSERVED.

25X1D



GUANABACOA MILITARY AREA 2307N 08215W
EAST AREA -- 20 TRACKED PRIME MOVERS, 33 CARGO TRUCKS, 6 FA/AAA PIECES, AND 7 PROBABLE FA/AAA PIECES.
WEST AREA -- AT LEAST 60 VEHICLES.
SEMI-DARKNESS AND SHADOWS LIMIT INTERPRETATION.

25X1D



25X1A

LOMA DE TIERRA, MILITARY CAMP 2301N 08213W
NO APPARENT CHANGE IN FACILITIES.
NO VEHICLES OBSERVED.



25X1D



HAVANA MILITARY CAMP CALABAZAR 2301N 08217W
AREA 1 -- 17 PROBABLE TANKS/SP GUNS AND APPROXIMATELY 30 VEHICLES.
AREA 2 -- APPROXIMATELY 45 VEHICLES AND 5 POSSIBLE FA PIECES.

SECRET

NPIC/R-1544/63

AREA 3 -- 49 PROBABLE TANKS/SP GUNS.
AREA 4 -- 8 VEHICLES OR PIECES OF EQUIPMENT.
AREA 5 -- APPROXIMATELY 40 VEHICLES AND 5 POSSIBLE
FA PIECES.
AREA 6 -- APPROXIMATELY 15 VEHICLES.

25X1D



25X1A

GUANE, MILITARY CAMP 2212N 08408W

NINE TANKS/SP GUNS OBSERVED.
FOLIAGE AND SHADOW LIMIT INTERPRETATION.

25X1D



SAN JOSE DE LAS LAJAS STORAGE 2257N 08211W

NO APPARENT CHANGE IN FACILITIES.
NO VEHICLES OBSERVED.

25X1D



LA JUTIA AREA, MILITARY INSTALLATION 2155N 08016W

NO APPARENT CHANGE IN FACILITIES.
TWENTY-EIGHT CARGO TRUCKS AND ONE UNIDENTIFIED
VEHICLE OBSERVED.

25X1D



CANTEL MILITARY CAMP 2302N 08119W

TWO BUILDINGS UNDER CONSTRUCTION.
AT LEAST 18 PROBABLE TANKS/SP GUNS OBSERVED.

25X1D



HAVANA VEHICLE PARK 2309N 08215W

APPROXIMATELY 10 VEHICLES OBSERVED.

25X1D



SECRET

NPIC/R-1544/63

25X1A

LOMAS TETAS DE MANAGUA, TANK PARK 2258N 08219W

TWENTY-SIX PROBABLE TANKS/SP GUNS, APPROXIMATELY 35 UNIDENTIFIED TRACKED VEHICLES PARKED IN OPEN FIELD JUST WEST OF TANK PARKING AREA, AND 8 UNIDENTIFIED VEHICLES OBSERVED.

25X1D

GUANAJAY MILITARY CAMP MARTIN MESA 2257N 08243W

TEN TANKS/SP GUNS AND APPROXIMATELY 50 OTHER VEHICLES OBSERVED. SEMI-DARKNESS LIMITS INTERPRETATION.

25X1D

25X1A

GUANABANA, MILITARY AREA 2258N 08132W

NORTH AREA -- NO APPARENT CHANGE IN FACILITIES. AT LEAST 6 VEHICLES.
SOUTH AREA -- NO APPARENT CHANGE IN FACILITIES. AT LEAST 7 VEHICLES.
SHADOWS LIMIT INTERPRETATION.

25X1D

LIMONAR, TANK TRAINING AREA 2254N 08122W

NO APPARENT CHANGE IN FACILITIES EXCEPT NEW SECURITY FENCE AROUND 4 LARGE MAINTENANCE OR PARKING SHEDS. AT LEAST 25 PROBABLE TANKS/SP GUNS AND 4 UNIDENTIFIED VEHICLES OBSERVED. SHADOWS LIMIT FURTHER INTERPRETATION.

25X1D

25X1A

SAN DIEGO DE NUNEZ, MILITARY CAMP 2255N 08305W

THIRTEEN TANKS/SP GUNS OBSERVED. SHADOW AND FOLIAGE LIMIT INTERPRETATION.

25X1D

SECRET

NPIC/R-1544/63

25X1A

ANTON RECIO, MILITARY INSTALLATION 2211N 08036W

SIX POSSIBLE TANKS/SP GUNS, 4 CARGO TRUCKS, AND 2 UNIDENTIFIED VEHICLES OBSERVED.

25X1D

GUANABANA AREA, MILITARY CAMP 2258N 08134W

TEN POSSIBLE TANKS/SP GUNS AND 16 POSSIBLE PIECES OF EQUIPMENT OBSERVED. SHADOW LIMITS FURTHER INTERPRETATION.

25X1D

CONSOLACION DEL SUR MILITARY CAMP 2230N 08331W

NO APPARENT CHANGE IN FACILITIES. NO VEHICLES OBSERVED.

25X1D

MARTI AREA, ARMOR TRAINING AREA 2258N 08059W

NO APPARENT CHANGE IN FACILITIES. TWO PROBABLE TANKS/SP GUNS, 3 POSSIBLE TANKS/SP GUNS AND ONE UNIDENTIFIED VEHICLE OBSERVED.

25X1D

SANTA CLARA AREA, ARTILLERY TRAINING AREA 2224N 08000W

AREA 1 -- 4 CARGO TRUCKS, 7 FA PIECES, 2 PROBABLE FA PIECES, AND 2 UNIDENTIFIED VEHICLES.
AREA 2 -- ONE CARGO TRUCK AND AN OCCUPIED 6-GUN AAA SITE.
AREA 3 -- 3 CARGO TRUCKS OBSERVED IN CLOUD-FREE AREAS.
AREA 4 -- 13 CARGO TRUCKS OBSERVED IN CLOUD-FREE AREAS.
AREA 5 -- 19 TANKS/SP GUNS AND 9 CARGO TRUCKS.

25X1D

SECRET

SECRET

NPIC/R-1544/63

25X1A

JAGUA, MILITARY AREA 2205N 08029W

FIFTEEN CARGO TRUCKS AND 18 FA PIECES OBSERVED.

25X1D

BELLAVISTA MILITARY INSTALLATION 2300N 08136W

NO MILITARY ACTIVITY OR EQUIPMENT OBSERVED IN CLOUD-FREE AREAS.

25X1D

PLAYA COLOMBO LANDING BEACH 2154N 08246W

NO NEW MILITARY ACTIVITY OBSERVED.

25X1D

PLAYA DE FLAMENCOS LANDING BEACH 2153N 08243W

NO NEW MILITARY ACTIVITY OBSERVED.

25X1D

-MISCELLANEOUS ACTIVITY-

BEJUCAL MUNITIONS STORAGE SITES NE AND NW 2256N 08223W

NO APPARENT CHANGE IN FACILITIES.
NO VEHICLES OBSERVED.

25X1D

LA ROSITA STORAGE DEPOT BARAJAGUA 2208N 08004W

NO APPARENT CHANGE IN FACILITIES.
NO VEHICLES OBSERVED.

25X1D

SECRET

SECRET

NPIC/R-1544/63

-STATUS OF OTHER TARGETS-

THE FOLLOWING TARGETS SHOW NO APPARENT CHANGE SINCE LAST COVERAGE--

25X1A

SAN CRISTOBAL MRBM SITE 1	2240N 08317W
SAN CRISTOBAL MRBM SITE 3	2242N 08308W
SAGUA LA GRANDE MRBM SITE 1	2243N 08001W
SAN CRISTOBAL MRBM SITE 4	2246N 08258W
MINAS, AMMUNITION STORAGE AREA	2307N 08211W
HAVANA, AMMUNITION STORAGE AREA	2301N 08226W
CAYO LARGO	2138N 08129W
MESTANZA, EXPLOSIVES STORAGE SITE	2228N 08347W
EL CRIOLLO, MILITARY CAMP	2259N 08225W
MINAS AREA, MILITARY CAMP	2306N 08211W
GUAYABAL MILITARY CAMP	2254N 08237W
CABANA FORTRESS	2308N 08220W
SPECIAL AREA ALPHA	2258N 08227W
SPECIAL AREA BRAVO BLUE	2250N 08233W
SPECIAL AREA BRAVO RED	2254N 08231W
SPECIAL AREA VICTOR	2300N 08234W
SPECIAL AREA TANGO	2258N 08244W
MATANZAS LANDING BEACH	2301N 08126W
CIENFUEGOS LANDING BEACH	2202N 08036W
ENSENADA COLORADO LANDING BEACH	2202N 08025W
SAN FRANCISCO DE PAULA, MUNITIONS STORAGE SITE	2303N 08218W
MANAGUA, MUNITIONS STORAGE SITE	2258N 08218W

25X1D

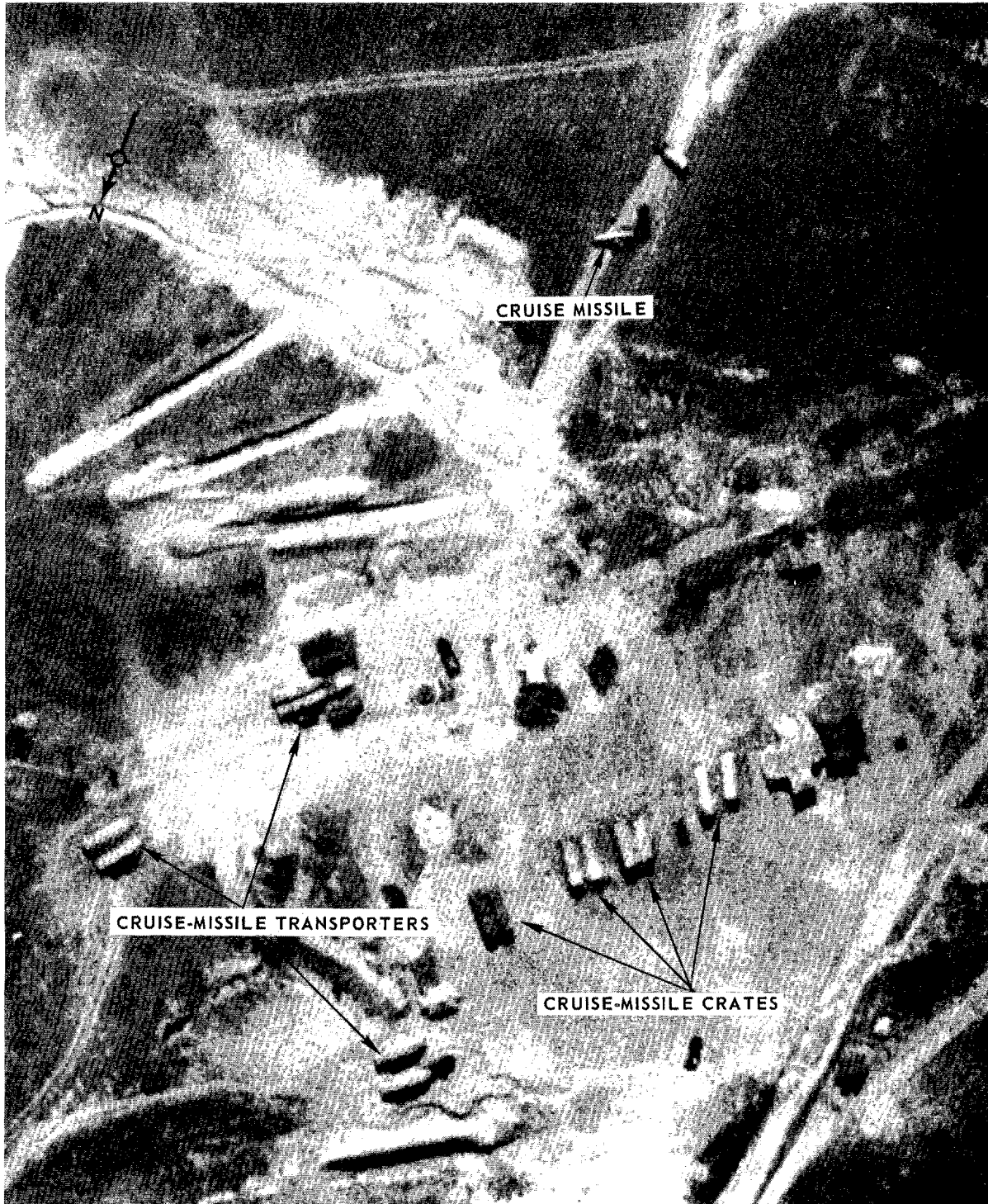
THE FOLLOWING TARGETS COULD BE IDENTIFIED BUT NOT INTERPRETED --

25X1A

GUERRA CRUISE-MISSILE STORAGE	2300N 08250W
TRINIDAD AIRFIELD	2147N 07959W
CASILDA PORT	2145N 07959W
LA BOCA, MILITARY CAMP	2301N 08242W
BAHIA HONDA, MILITARY CAMP	2258N 08311W
CABANAS AREA, MILITARY CAMP	2256N 08251W
MADRUGA MILITARY AREA	2256N 08149W
SPECIAL AREA HOTEL	2301N 08246W
TARARA LANDING BEACH	2310N 08212W
VARADERO LANDING BEACH	2308N 08118W

SECRET

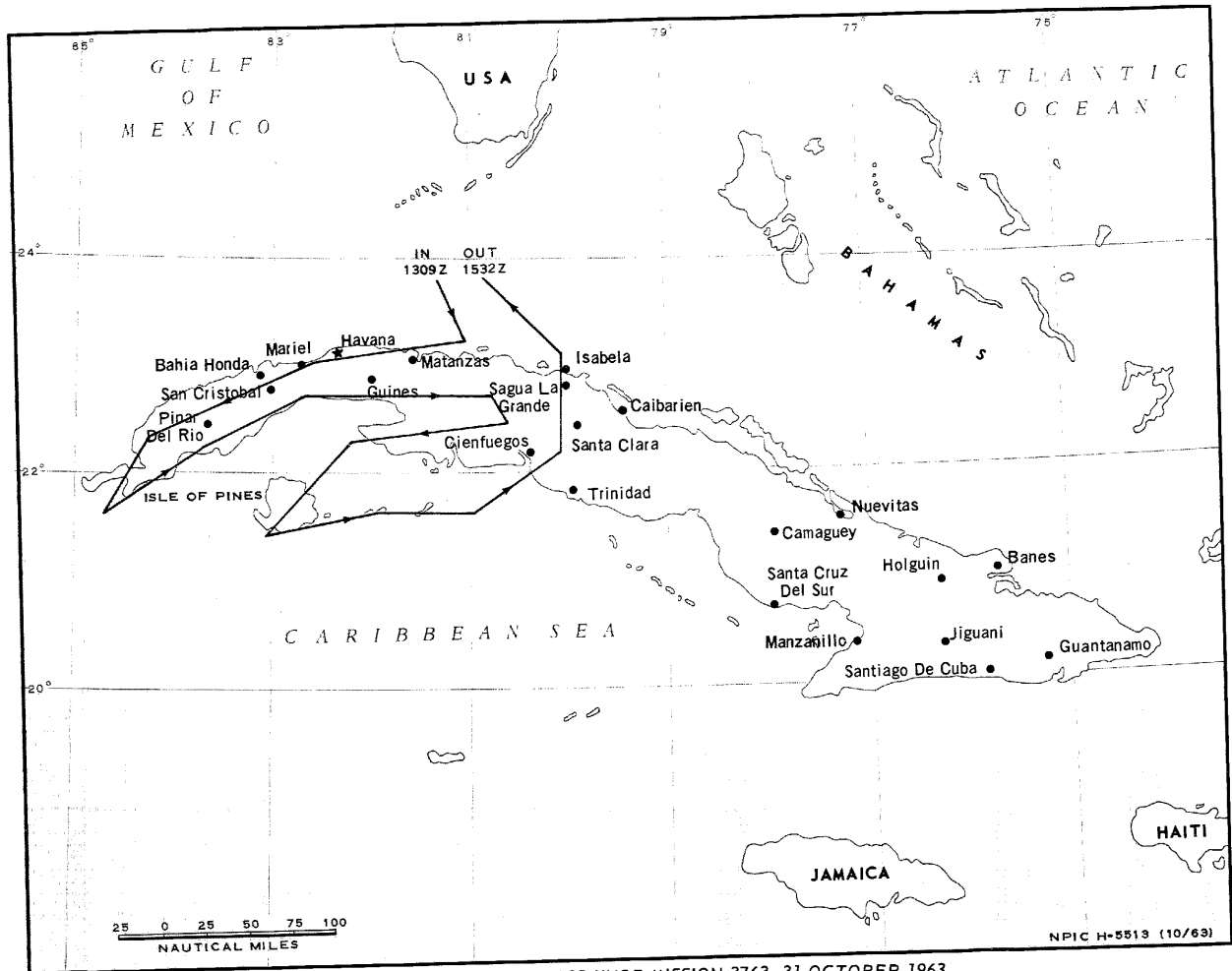
SECRET



SIGUANEA CRUISE MISSILE SITE

NPIC H-8539 (11/63)

SECRET



APPROXIMATE TRACK OF BRASS KNOB MISSION 3763, 31 OCTOBER 1963

SECRET

SECRET

NPIC/R-1544/63

Approved For Release 2000/08/04 : CIA-RDP78B04560A001800010020-7

SECRET

Approved For Release 2000/08/04 : CIA-RDP78B04560A001800010020-7

SECRET