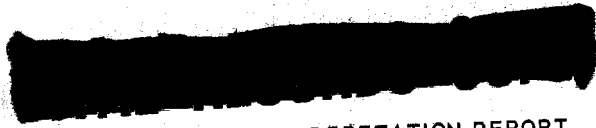


SECRET

NPIC/R-1530/63
October 1963



PHOTOGRAPHIC INTERPRETATION REPORT

IPIR
BRASS KNOB MISSION 3750
13 OCTOBER 1963

Declass reveiw-NIMA/DOD

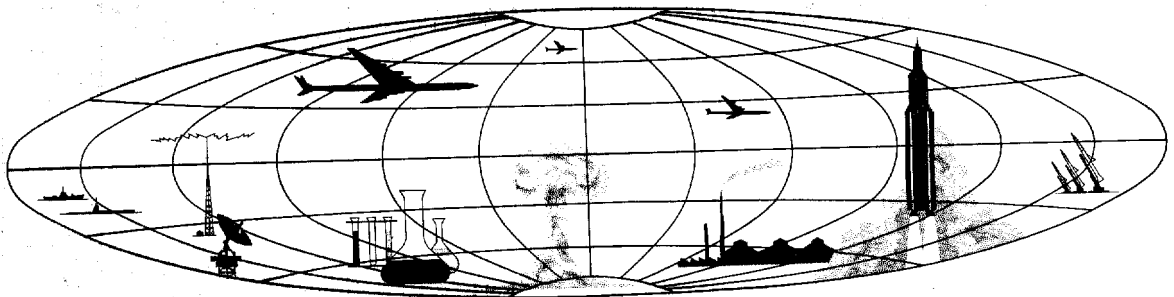


CIA



DIA

NATIONAL PHOTOGRAPHIC INTERPRETATION CENTER





WARNING

This document contains information affecting the national defense of the United States, within the meaning of Title 18, sections 793 and 794, of the U.S. Code, as amended. Its transmission or revelation of its contents to or receipt by an unauthorized person is prohibited by law.

SECRET

NPIC/R-1530/63

NATIONAL PHOTOGRAPHIC INTERPRETATION CENTER

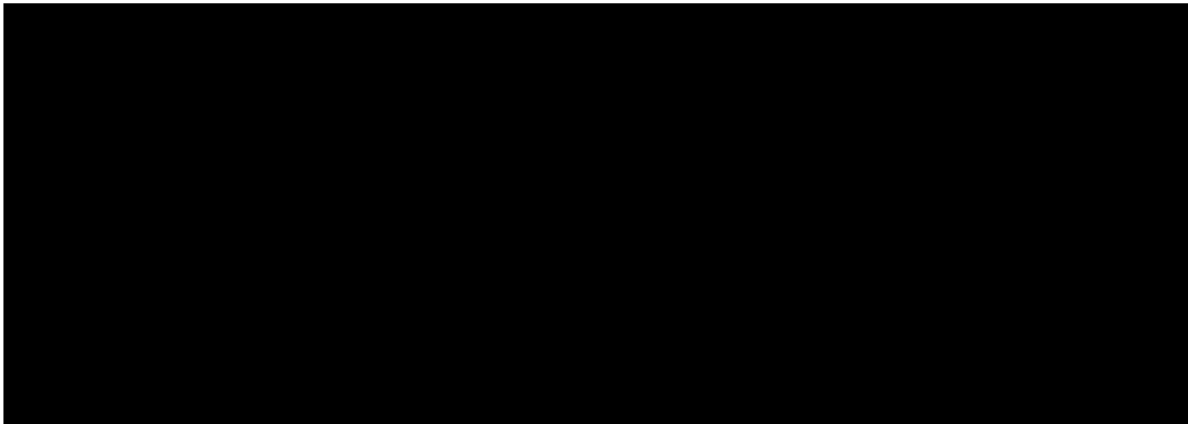
IMMEDIATE PHOTOGRAPHIC INTERPRETATION REPORT

THE FOLLOWING INFORMATION REPRESENTS A PRELIMINARY ANALYSIS OF AERIAL PHOTOGRAPHY FROM BRASS KNOB MISSION 3750, DATED 13 OCT 1963. THE NUMBER APPEARING AT THE END OF THE HEADER LINE IS THE COMOR TARGET NUMBER.

SYMBOLS USED TO INDICATE CONDITIONS WHICH AFFECT THE APPEARANCE OF THE TARGET ON THE PHOTOGRAPHY ARE AS FOLLOWS -- C (CLEAR), SC (SCATTERED CLOUDS), HC (HEAVY CLOUDS), H (HAZE), CS (CLOUD SHADOW), SD (SEMIDARKNESS), O (OBLIQUITY), PQ (POOR IMAGE QUALITY).

PREFACE

25X1D



FOR ITEMS OF SPECIAL INTEREST SEE THE FOLLOWING --
ATTACHMENT 1. GUERRA CRUISE-MISSILE STORAGE
ATTACHMENT 2. JOSE MARTI INTERNATIONAL AIRFIELD
ATTACHMENT 3. MANAGUA MILITARY CAMP
ATTACHMENT 4. TACAJO CENTRAL SUGAR MILL

-MISSILES-

25X1A

SAN JULIAN AIRFIELD SAM SITE 2205N 08408W

SITE 1 -- 6 REVETTED CANVAS-COVERED LAUNCH POSITIONS,
6 CANVAS-COVERED MISSILE TRANSPORTERS, 15 CANVAS-

SECRET

SECRET

NPIC/R-1530/63

COVERED TRACKED PRIME MOVERS, ONE VAN TRUCK, 4 CARGO TRUCKS, 2 UTILITY TRUCKS, 2 POSSIBLE GENERATOR VANS, ONE CARGO TRAILER, 4 UNIDENTIFIED VEHICLES (2 CANVAS-COVERED), AND AN OCCUPIED GUIDANCE REVETMENT WITH RADAR AND CANVAS-COVERED EQUIPMENT.

SITE 2 -- 6 UNRETTED LAUNCHERS (ONE CANVAS-COVERED, 5 NET-COVERED, 4 WITH MISSILES), 3 CANVAS-COVERED MISSILE TRANSPORTERS, 15 CANVAS-COVERED TRACKED PRIME MOVERS, 2 VAN TRUCKS, ONE CARGO TRUCK, 3 UNIDENTIFIED VEHICLES, 3 VAN TRAILERS, ONE CARGO TRAILER, AND AN OCCUPIED GUIDANCE AREA WITH RADAR AND CANVAS-COVERED EQUIPMENT.

25X1D



25X1A

MARIEL SAM SITE 2300N 08249W



SIX RETTTED LAUNCHERS (3 WITH MISSILES), 7 CANVAS-COVERED MISSILE TRANSPORTERS, 5 CARGO TRUCKS, ONE VAN TRAILER, AND AN OCCUPIED GUIDANCE REVETMENT WITH RADAR AND 6 VANS.

25X1D



25X1A

MATANZAS SAM SITE 2301N 08129W



SIX UNRETTED LAUNCHERS (ONE CANVAS-COVERED), 6 MISSILE TRANSPORTERS (2 CANVAS-COVERED), 5 VAN TRAILERS, 12 CANVAS-COVERED TRACKED PRIME MOVERS, ONE TRUCK-MOUNTED CRANE, 2 UNIDENTIFIED VEHICLES, AND AN OCCUPIED GUIDANCE AREA OBSERVED.

25X1D



25X1A

CIENFUEGOS SAM SITE 2202N 08024W



SIX UNRETTED LAUNCHERS (3 CANVAS-COVERED, 3 WITH MISSILES), 3 CANVAS-COVERED HOLD POSITIONS, ONE POSSIBLE MISSILE TRANSPORTER, 2 CANVAS-COVERED PROBABLE EQUIPMENT AREAS, 2 POSSIBLE VAN TRAILERS, ONE CARGO TRUCK, AND AN OCCUPIED GUIDANCE AREA WITH RADAR AND CANVAS-COVERED EQUIPMENT. FACILITIES INCLUDE 5 BUILDINGS AND 3 LARGE TENTS.

25X1D



SECRET

SECRET

NPIC/R-1530/63

25X1A

SANTIAGO DE LAS VEGAS SAM ASSEMBLY AREA 2257N 08221W

TWENTY-FOUR MISSILE TRANSPORTERS, 9 CARGO TRUCKS, ONE VAN TRUCK, 4 TRACTOR-TRAILER TRUCKS, 10 UNIDENTIFIED TRAILERS, NUMEROUS MISSILE CANISTERS, AND APPROXIMATELY 10 FIN-ASSEMBLY CRATES OBSERVED.

25X1D

CAMAGUEY AIRFIELD SAM SITE 2122N 07750W

THREE UNRETTED CANVAS-COVERED LAUNCHERS, 7 CANVAS-COVERED MISSILE TRANSPORTERS, 5 TRACKED PRIME MOVERS, 6 TRUCK TRACTORS, 4 CARGO TRUCKS, ONE VAN TRUCK, AND ONE UTILITY TRUCK OBSERVED IN CLOUD-FREE AREAS.

25X1D

HOLGUIN SAM SITE 2052N 07627W

SITE CONTAINS 6 SEMI-RETTED LAUNCHERS (3 WITH MISSILES), 7 MISSILE TRANSPORTERS (4 CANVAS-COVERED), 11 TRACKED PRIME MOVERS, 2 APC, 2 CARGO TRUCKS, ONE VAN TRUCK, 4 UNIDENTIFIED VEHICLES, AND AN OCCUPIED GUIDANCE AREA. FACILITIES INCLUDE 4 BARRACKS BUILDINGS, ONE LARGE, AND 2 MEDIUM TENTS.

25X1D

PUNTA BRAVA SAM SITE 2301N 08231W

SIX UNRETTED LAUNCHERS (4 CANVAS-COVERED, ONE WITH MISSILE), 7 CANVAS-COVERED MISSILE TRANSPORTERS, 8 TRACKED PRIME MOVERS, 3 CARGO TRUCKS, ONE TANK TRUCK, 3 VAN TRAILERS, ONE TRUCK-MOUNTED CRANE, 2 CARGO TRAILERS, 6 SETS OF BOGIE WHEELS, AND AN OCCUPIED GUIDANCE AREA WITH RADAR AND CANVAS-COVERED EQUIPMENT.

25X1D

SECRET

SECRET

NPIC/R-1530/63

25X1A

GUERRA CRUISE-MISSILE STORAGE 2300N 08250W

NO APPARENT CHANGE IN FACILITIES.
TWELVE CRUISE-MISSILE-RELATED VEHICLES, 8 PROBABLE
CRUISE-MISSILE TRANSPORTERS, 34 CRUISE-MISSILE
CRATES, 2 TRACKED PRIME MOVERS, 33 CARGO TRUCKS,
19 VAN TRUCKS, 14 UTILITY TRUCKS, ONE POL TRUCK,
28 UNIDENTIFIED VEHICLES, 5 TRUCK-MOUNTED CRANES,
3 CARGO TRAILERS, 18 UNIDENTIFIED VEHICLES OR PIECES
OF EQUIPMENT, AND ADDITIONAL VEHICLES OR EQUIPMENT
UNDER CANVAS OBSERVED.
(SEE ATTACHMENT 1).

25X1D

-AIRFIELDS-

25X1A

CAMILO CIENFUEGOS AIRFIELD 2229N 07955W

AIRCRAFT -- 2 FISHBED, 2 FARMER, AND 3 FAGOT/FRESCO
OBSERVED IN CLOUD-FREE AREAS.

25X1D

25X1A

CAMAGUEY INTERNATIONAL AIRFIELD 2125N 07751W

AIRCRAFT -- 2 FISHBED, 2 FARMER, 5 FAGOT, ONE COOT, 2
CRATE, ONE C-47, 2 HOUND, ONE LIAISON, AND 2
DERELICT FAGOT.

25X1D

25X1A

HOLGUIN AIRFIELD 2048N 07618W

AIRCRAFT -- 2 FISHBED, 2 FARMER, 8 FAGOT (ONE WITHOUT
TAIL ASSEMBLY), 3 COLT, ONE CRATE, ONE C-47, 2 HOUND,
2 HARE, AND 7 LIAISON.

25X1D

25X1A

SAN ANTONIO DE LOS BANDOS AIRFIELD 2252N 08231W

AIRCRAFT -- 22 FISHBED, ONE FARMER (DISASSEMBLED), 15
FAGOT/FRESCO, AND ONE UNIDENTIFIED STRAIGHT-WING
AIRCRAFT OBSERVED IN CLOUD-FREE AREAS.

SECRET

SECRET

NPIC/R-1530/63

25X1D



25X1A

SAN JULIAN AIRFIELD 2205N 08409W

AIRCRAFT -- 2 FAGOT/FRESCO, 2 C-46, AND ONE HARE.

25X1D



JOSE MARTI INTERNATIONAL AIRFIELD 2259N 08224W

OPERATIONS AREA -- 2 CLEAT, 3 CRATE, ONE COOT, 2
BRITANNIA, 3 CONSTELLATION, AND ONE C-46.
MAINTENANCE AREA -- 2 C-54, ONE B-26, 3 C-47, ONE
CRATE, AND ONE LODESTAR.
(SEE ATTACHMENT 2).

25X1D



PLAYA BARACOA AIRFIELD 2302N 08235W

AIRCRAFT -- 2 CRATE, ONE C-47, 30 HOUND, ONE HARE,
AND 2 BELL HELICOPTERS.


25X1D



-PORTS-

MARIEL NAVAL BASE AND NAVAL AIR STATION 2301N 08245W

25X1D

VESSELS -- ONE PF , 4 KOMAR-CLASS PGMG, 3
SMALL PC, AND ONE LARGE FREIGHTER LEAVING PORT.
FIFTEEN UNIDENTIFIED CRATES, 20 CARGO TRUCKS, 2 VAN
TRUCKS, ONE TRUCK-MOUNTED CRANE, 5 PROBABLE VAN
TRAILERS, AND ONE CARGO TRAILER OBSERVED AT THE NAVAL
AIR STATION.

25X1D



25X1A

CABANAS NAVAL FACILITY 2258N 08258W

VESSELS -- 4 KOMAR-CLASS PGMG, 3 P-4 MTB, AND ONE PC.
NO APPARENT CHANGE IN FACILITIES OR VEHICLE AND
EQUIPMENT COUNT.

SECRET

SECRET

NPIC/R-1530/63

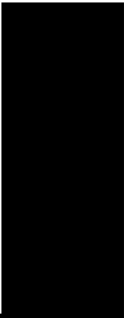
25X1D



25X1A

MATANZAS PORT 2303N 08134W

VESSELS -- 2 LARGE FREIGHTERS.
INCOMPLETE COVERAGE.



25X1D



25X1D

HAVANA PORT 2308N 08221W

25X1D

NO APPARENT CHANGE IN CLOUD-FREE AREAS SINCE



25X1D



25X1A

PUERTO PADRE PORT 2113N 07632W

NO LARGE VESSELS OBSERVED IN CLOUD-FREE AREAS.



25X1D



-MILITARY ACTIVITY-

PINAR DEL RIO MILITARY CAMP 2223N 08342W

FACILITIES CONSIST OF APPROXIMATELY 40 BUILDINGS (AT LEAST 4 BARRACKS-TYPE), 3 LARGE TENTS, AND 2 MEDIUM TENTS. THIRTY-NINE CARGO TRUCKS, 3 VAN TRUCKS, 5 UTILITY TRUCKS, AND 2 CARGO TRAILERS OBSERVED IN AREA.

25X1D



25X1A

LA FLORA MILITARY STORAGE 2252N 08233W

NINETEEN CARGO TRUCKS OBSERVED IN CLOUD-FREE AREAS.



25X1D



SECRET

SECRET

NPIC/R-1530/63

25X1A

HOLGUIN MILITARY CAMP 2053N 07614W

MAIN CAMP -- FACILITIES INCLUDE 71 LARGE TENTS (ONE DAMAGED, 2 COLLAPSED, AND 18 NOT OF A KNOWN SOVIET TYPE), 15 MEDIUM TENTS (ONE NOT OF A KNOWN SOVIET TYPE), AND 19 SMALL TENTS, 35 TANKS/SP GUNS, 9 SNAPPERS, ONE BTR-50P, 3 BRDM APC, ONE TANK RECOVERY VEHICLE, 2 UNIDENTIFIED TRACKED VEHICLES, 3 TRUCK-MOUNTED TREADWAY BRIDGES, 2 POL TRUCKS, 116 CARGO TRUCKS, 18 VAN TRUCKS, 18 UTILITY TRUCKS, 16 CARGO TRAILERS, 13 PROBABLE MOTORCYCLES, 2 UNIDENTIFIED VEHICLES, 26 FA PIECES, AND 10 AAA PIECES. SIX AAA PIECES OBSERVED AT THE 9-GUN AAA SITE. THE 6-GUN AAA SITE REMAINS UNOCCUPIED.

ENCAMPMENT .6 NM SE -- 3 LARGE TENTS (NONE OF A KNOWN SOVIET TYPE), AND 2 MEDIUM TENTS OBSERVED IN CLOUD-FREE AREAS. THE 9-GUN AAA SITE REMAINS UNOCCUPIED. ENCAMPMENT 2.2 NM SE -- 4 LARGE TENTS (NONE OF A KNOWN SOVIET TYPE), ONE CARGO TRUCK, AND 15 FA PIECES OBSERVED IN CLOUD-FREE AREAS.

25X1D

CAMAGUEY MILITARY CAMP 1 2121N 07751W

NO APPARENT CHANGE IN CLOUD-FREE AREAS.

25X1D

REMEDIOS MILITARY CAMP 2226N 07934W

NO APPARENT CHANGE IN CLOUD-FREE AREAS.

25X1D

SANTIAGO DE LAS VEGAS AREA, MILITARY CAMP 2258N 08220W

THIRTEEN TANKS/SP GUNS, 7 UNIDENTIFIED TRACKED VEHICLES, 13 PROBABLE FROG MISSILE TRANSPORTERS, 6 UTILITY TRUCKS, 4 PROBABLE TRUCK-MOUNTED TREADWAY BRIDGES, AND AT LEAST 55 UNIDENTIFIED VEHICLES OBSERVED.

THE 6- AND 9-GUN AAA SITES APPEAR OCCUPIED.

25X1D

SECRET

SECRET

NPIC/R-1530/63

25X1A

TORRENS MILITARY COMPLEX 2259N 08228W

NO APPARENT CHANGE IN CLOUD-FREE AREAS.

25X1D

MADRUGA MILITARY AREA 2256N 08149W

NO APPARENT CHANGE IN PERMANENT FACILITIES. FOUR LARGE TENTS (NONE OF A KNOWN SOVIET TYPE), 5 POL TRUCKS, 4 CARGO TRUCKS, 2 VAN TRUCKS, AND ONE UNIDENTIFIED VEHICLE OBSERVED IN AREA.

25X1D

MANAGUA MILITARY CAMP 2258N 08217W

NO APPARENT CHANGE IN PERMANENT FACILITIES. FIFTEEN LARGE TENTS (NONE OF A KNOWN SOVIET TYPE) OBSERVED IN THE AREA. FOUR HOUND, 27 TANKS/SP GUNS, FORTY 8-WHEELED APC, 23 LOWBOY TRAILERS, 5 TRUCK-MOUNTED TREADWAY BRIDGES, AND APPROXIMATELY 350 OTHER VEHICLES OBSERVED. (SEE ATTACHMENT 3).

25X1D

CAMPO FLORIDO MILITARY CAMP 2307N 08206W

SIX PROBABLE TANKS/SP GUNS AND 3 CARGO TRUCKS OBSERVED IN CLOUD-FREE AREAS.

25X1D

LA JUTIA AREA, MILITARY INSTALLATION 2155N 08016W

NO APPARENT CHANGE IN FACILITIES. ONE CARGO TRUCK OBSERVED.

25X1D

SECRET

SECRET

NPIC/R-1530/63

25X1A

CANTEL MILITARY CAMP 2302N 08119W

NO APPARENT CHANGE IN FACILITIES.
TWELVE TANKS/SP GUNS AND 3 CARGO TRUCKS OBSERVED IN
CLOUD-FREE AREAS.

25X1D



25X1A

GUANABANA, MILITARY AREA 2258N 08132W

NO APPARENT CHANGE IN FACILITIES.
NORTH AREA -- 10 CARGO TRUCKS AND 18 CANVAS-COVERED
PIECES OF EQUIPMENT.
SOUTH AREA -- 18 CARGO TRUCKS.

25X1D



CEIBA MOCHA, MILITARY AREA 2257N 08142W

NO APPARENT CHANGE IN FACILITIES.
SIXTEEN CARGO TRUCKS AND 2 UNIDENTIFIED VEHICLES
OBSERVED.
CLOUD SHADOW PRECLUDES FURTHER INTERPRETATION.

25X1D



GUAYABAL MILITARY CAMP 2254N 08237W

MAIN CAMP -- 17 TRACKED PRIME MOVERS, 13 CARGO TRUCKS,
8 UNIDENTIFIED VEHICLES OR PIECES OF EQUIPMENT, AND 17
FA PIECES OBSERVED.
AREA 1 -- 25 CARGO TRUCKS, 7 UNIDENTIFIED VEHICLES OR
PIECES OF EQUIPMENT, AND 15 FA PIECES.
AREA 2 -- CLOUD-SHADOW PRECLUDES INTERPRETATION.
AREA 3 -- NO VEHICLES OR EQUIPMENT OBSERVED.

25X1D



25X1A

SANTA CLARA AREA, ARTILLERY TRAINING AREA 2224N 08000W

AREA 1 -- 2 FA PIECES.
AREA 2 -- 6 CARGO TRUCKS. THE 6-GUN AAA SITE REMAINS
OCCUPIED.
AREA 3 -- 2 CARGO TRUCKS, 5 UNIDENTIFIED VEHICLES, AND
7 PROBABLE FA PIECES.

SECRET

SECRET

NPIC/R-1530/63

AREA 4 -- 14 CARGO TRUCKS AND AT LEAST 9 UNIDENTIFIED VEHICLES.
AREA 5 -- CLOUD-COVERED.
SCATTERED CLOUDS AND CLOUD-SHADOW LIMIT INTERPRETATION.

25X1D



25X1A

TACAJO MILITARY CAMP 2051N 07558W

AREA 1 -- 16 CARGO TRUCKS, ONE ROAD GRADER, 3 UNIDENTIFIED VEHICLES, AND 7 POSSIBLE SMALL CARGO TRAILERS.
AREA 2 -- NO VEHICLES OR EQUIPMENT OBSERVED.
AREA 3 -- NO VEHICLES OR EQUIPMENT OBSERVED.
AREA 4 -- THE TWO 3-GUN AAA SITES ARE UNOCCUPIED.
AREA 5 -- CLOUD-COVERED.
AREA 6 -- 4 CARGO TRUCKS AND ONE UTILITY TRUCK OBSERVED.
AREA 7 -- CLOUD-COVERED.
AREA 8 -- 17 UNIDENTIFIED VEHICLES OBSERVED.
SCATTERED CLOUDS AND CLOUD SHADOW LIMIT INTERPRETATION.

25X1D



JAGUA, MILITARY AREA 2205N 08029W

NO APPARENT CHANGE IN FACILITIES.
TWENTY CARGO TRUCKS AND 18 POSSIBLE FA PIECES OBSERVED.

25X1D



LA VEGUITA MILITARY CAMP 2049N 07615W

TEN CARGO TRUCKS AND 12 FA PIECES OBSERVED.

25X1D



BELLAVISTA MILITARY INSTALLATION 2300N 08136W

NO ACTIVITY OR EQUIPMENT OBSERVED.

25X1D



SECRET

SECRET

NPIC/R-1530/63

25X1A

CAMAGUEY MILITARY INSTALLATION SW 2117N 07801W

NO APPARENT CHANGE IN FACILITIES.
TWENTY CARGO TRUCKS (10 IN CONVOY FORMATION) AND 3
UTILITY TRUCKS OBSERVED IN CLOUD-FREE AREAS.

25X1D

SPECIAL AREA ALPHA 2258N 08227W

NO APPARENT CHANGE IN CLOUD-FREE AREAS.

25X1D

SPECIAL AREA HOTEL 2301N 08246W

THREE TANKS/SP GUNS OBSERVED ON ROAD IN PLAYA VISTA
DEL MAR AT UTM 17Q LR 134469, AMS SERIES E723, SHEET
3685-III, 1ST ED.

25X1D

25X1A

SPECIAL AREA BRAVO RED 2254N 08231W

NO APPARENT CHANGE IN CLOUD-FREE AREAS.

25X1D

TARARA LANDING BEACH 2310N 08212W

NO APPARENT CHANGE IN CLOUD-FREE AREAS.

25X1D

-MISCELLANEOUS ACTIVITY-

25X1A

SANTA CLARA MILITARY INSTALLATION CUBANACAN 2224N 07953W

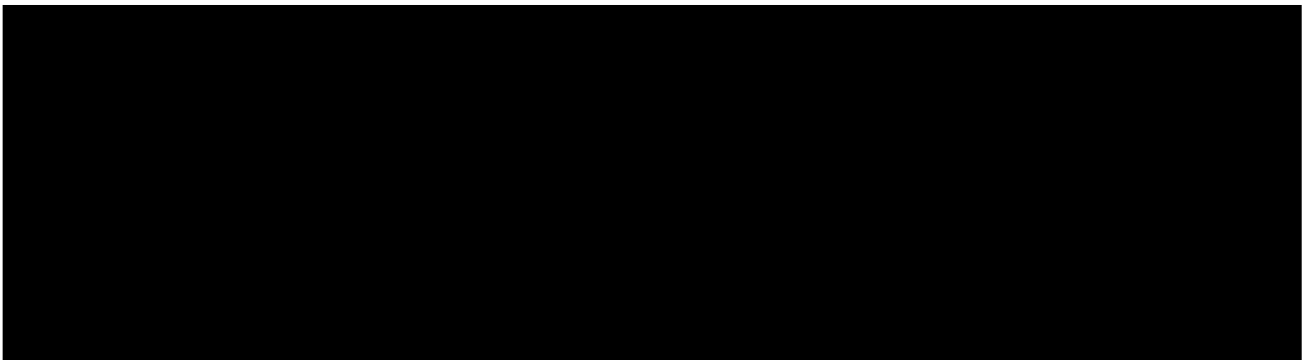
CLUB CUBANACAN -- 4 VAN TRUCKS AND 7 FA PIECES. THE
PREVIOUSLY REPORTED PROBABLE CARGO TRAILERS ARE
IDENTIFIED AS STACKS OF MATERIAL.

SECRET

SECRET

NPIC/R-1530/63

STORAGE AREA NORTH -- CLOUD COVERED.



25X1D

TACAJO SUGAR MILL 2050N 07556W

.8 NM EAST OF TACAJO.
EXTENSIVE ROOF DAMAGE OBSERVED AT MANY OF THE MAJOR
BUILDINGS. TEN CARGO TRUCKS IN AREA. THREE AAA
PIECES, 5 CARGO TRUCKS, AND ONE CARGO TRAILER OBSERVED
NORTH OF THE SUGAR MILL AT A BASEBALL FIELD.
(SEE ATTACHMENT 4).

25X1D



-STATUS OF OTHER TARGETS-

THE FOLLOWING TARGETS SHOW NO APPARENT CHANGE
SINCE [REDACTED]

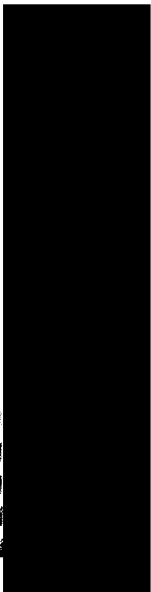
25X1A

25X1D

25X1D

GUANAJAY IRBM SITE 1
REMEDIOS IRBM SITE
GUANAJAY IRBM SITE 2
TAPASTE AREA, STORAGE SITES
CAIBARIEN SAM SITE
PINAR DEL RIO SAM ASSEMBLY AREA
MANAGUA SAM SITE
LA COLOMA SAM SITE 2
SANTA CLARA SAM SITE
TORRENS SAM ASSEMBLY AREA
BANES CRUISE-MISSILE SITE
PRESTON AIRFIELD
JAIME GONZALES AIRFIELD
PINAR DEL RIO AIRFIELD
TRINIDAD AIRFIELD
CIENFUEGOS PORT
CASILDA PORT

2257N 08239W
2225N 07935W
2257N 08236W
2303N 08207W
2228N 07929W
2221N 08339W
2259N 08215W
2219N 08334W
2229N 08000W
2257N 08227W
2058N 07538W
2044N 07539W
2209N 08025W
2225N 08341W
2147N 07959W
2209N 08027W
2145N 07959W



SECRET

SECRET

NPIC/R-1530/63

25X1A

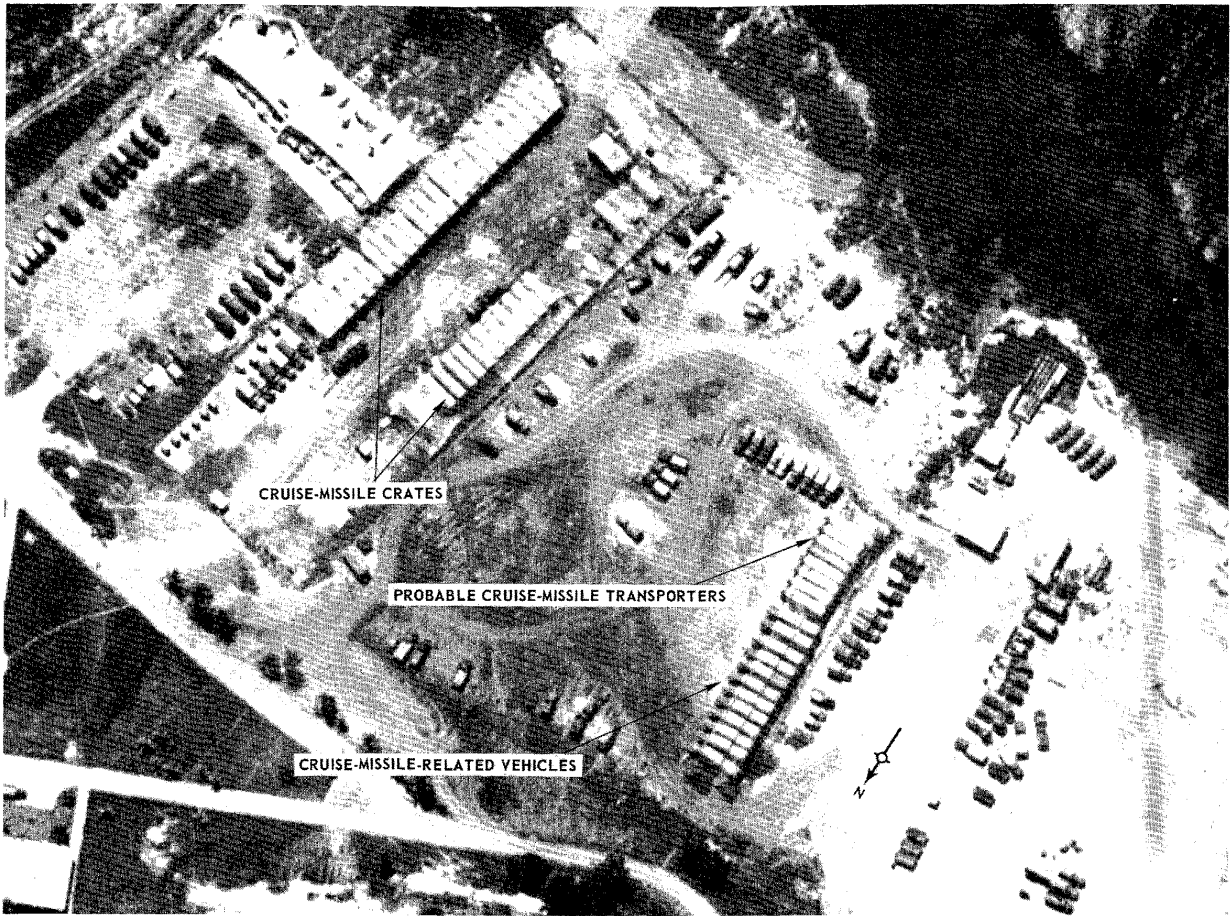
CABANAS PORT	2259N 08256W
BAHIA HONDA PORT	2255N 08311W
LA BOCA, MILITARY CAMP	2301N 08242W
BAHIA HONDA, MILITARY CAMP	2258N 08311W
CABANAS AREA, MILITARY CAMP	2256N 08251W
MINAS, AMMUNITION STORAGE AREA	2307N 08211W
HAVANA, AMMUNITION STORAGE AREA	2301N 08226W
SAN JOSE DE LAS LAJAS CAMP AND DEPOT	2255N 08210W
CAMAGUEY MILITARY CAMP	2126N 07753W
NAZARENO, MILITARY AREA	2258N 08214W
MESTANZA, EXPLOSIVES STORAGE SITE	2228N 08347W
HAVANA AREA, MILITARY CAMP	2301N 08217W
HOLGUIN MILITARY CAMP SOUTHWEST	2051N 07617W
MINAS AREA, MILITARY CAMP	2306N 08211W
HAVANA VEHICLE PARK	2309N 08215W
LOMAS TETAS DE MANAGUA, TANK PARK	2258N 08219W
GUANAJAY MILITARY CAMP MARTIN MESA	2257N 08243W
ALTAGRACIA, MILITARY AREA	2124N 07742W
ANTON RECIO, MILITARY INSTALLATION	2211N 08036W
GUANABANA AREA, MILITARY CAMP	2258N 08134W
TUMBADERO TANK TRAINING AREA	2104N 07558W
CHARCO DEL JOBO MILITARY AREA	2047N 07615W
SPECIAL AREA BRAVO BLUE	2250N 08233W
SPECIAL AREA VICTOR	2300N 08234W
SPECIAL AREA TANGO	2258N 08244W
CIENFUEGOS LANDING BEACH	2202N 08036W
ENSENADA COLORADO LANDING BEACH	2202N 08025W
SAN FRANCISCO DE PAULA, MUNITIONS STORAGE SITE	2303N 08218W
MANAGUA, MUNITIONS STORAGE SITE	2258N 08218W

25X1D

THE FOLLOWING TARGETS COULD BE IDENTIFIED BUT NOT INTERPRETED --

HAVANA SAM SITE	2309N 08213W
CAMPO LIBERTAD AIRFIELD	2306N 08226W
HAVANA COMMUNICATIONS CENTER	2300N 08226W
ARTEMISA, MILITARY CAMP	2251N 08248W
SANTA CLARA AREA, MILITARY ACTIVITY	2221N 07957W
GUANABACOA, MILITARY AREA	2307N 08215W
LOMA DE TIERRA, MILITARY CAMP	2301N 08213W
ZARAGOZA AREA MILITARY CAMP	2256N 08204W
SAN JOSE DE LAS LAJAS STORAGE	2257N 08211W
EL CRIOLLO, MILITARY CAMP	2259N 08225W
SAN DIEGO DE NUNEZ, MILITARY CAMP	2255N 08305W

SECRET



NPIC H-5233 (10/63)

GUERRA CRUISE-MISSILE STORAGE

SECRET

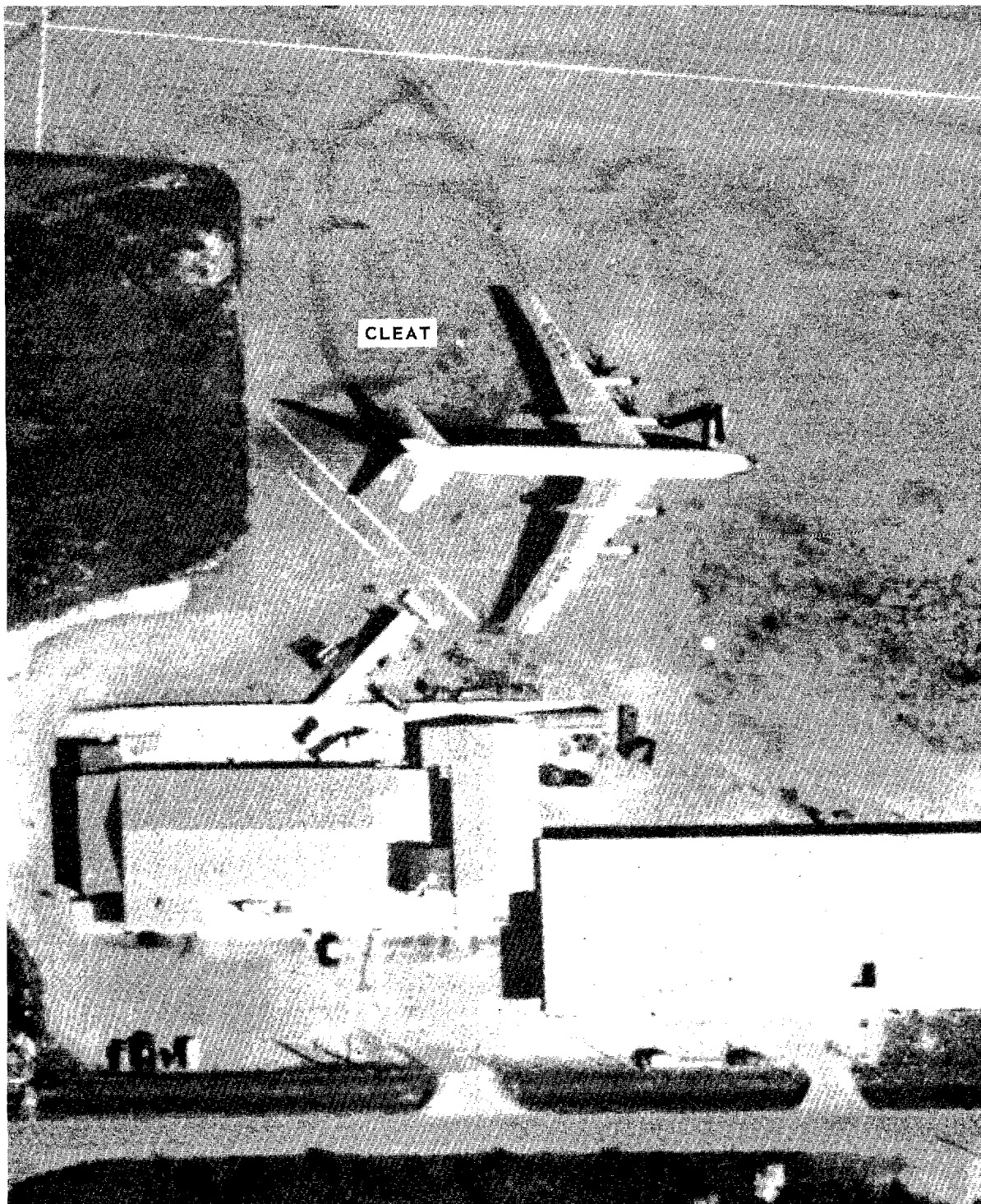
SECRET

NPIC/R-1530/63
ATTACHMENT 1

SECRET

Approved For Release 2000/08/04 : CIA-RDP78B04560A001800010006-3

NPIC/R-1530/63
ATTACHMENT 2

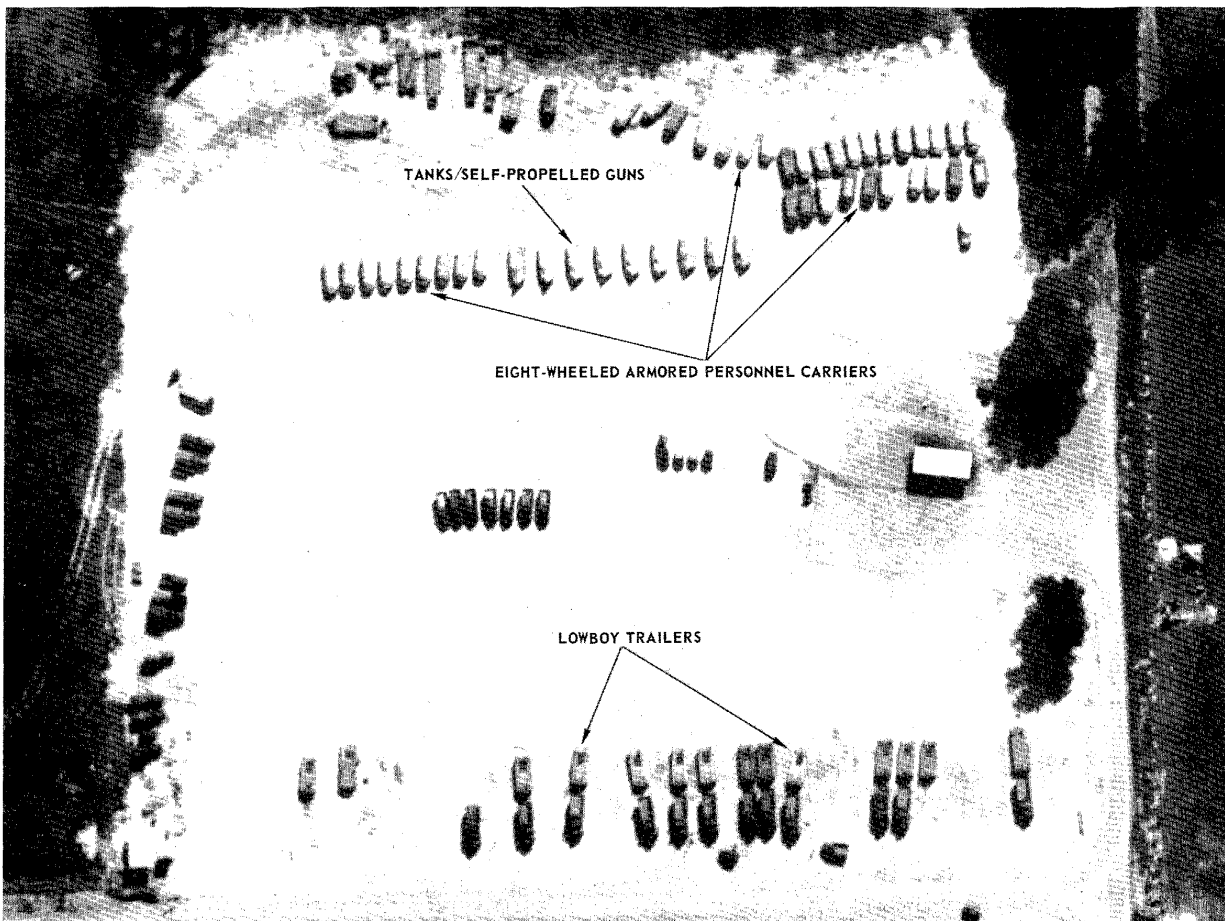


JOSE MARTI INTERNATIONAL AIRFIELD

NPIC H-5231 (10/63)

Approved For Release 2000/08/04 : CIA-RDP78B04560A001800010006-3

SECRET



NPIC H-5232 (10/69)

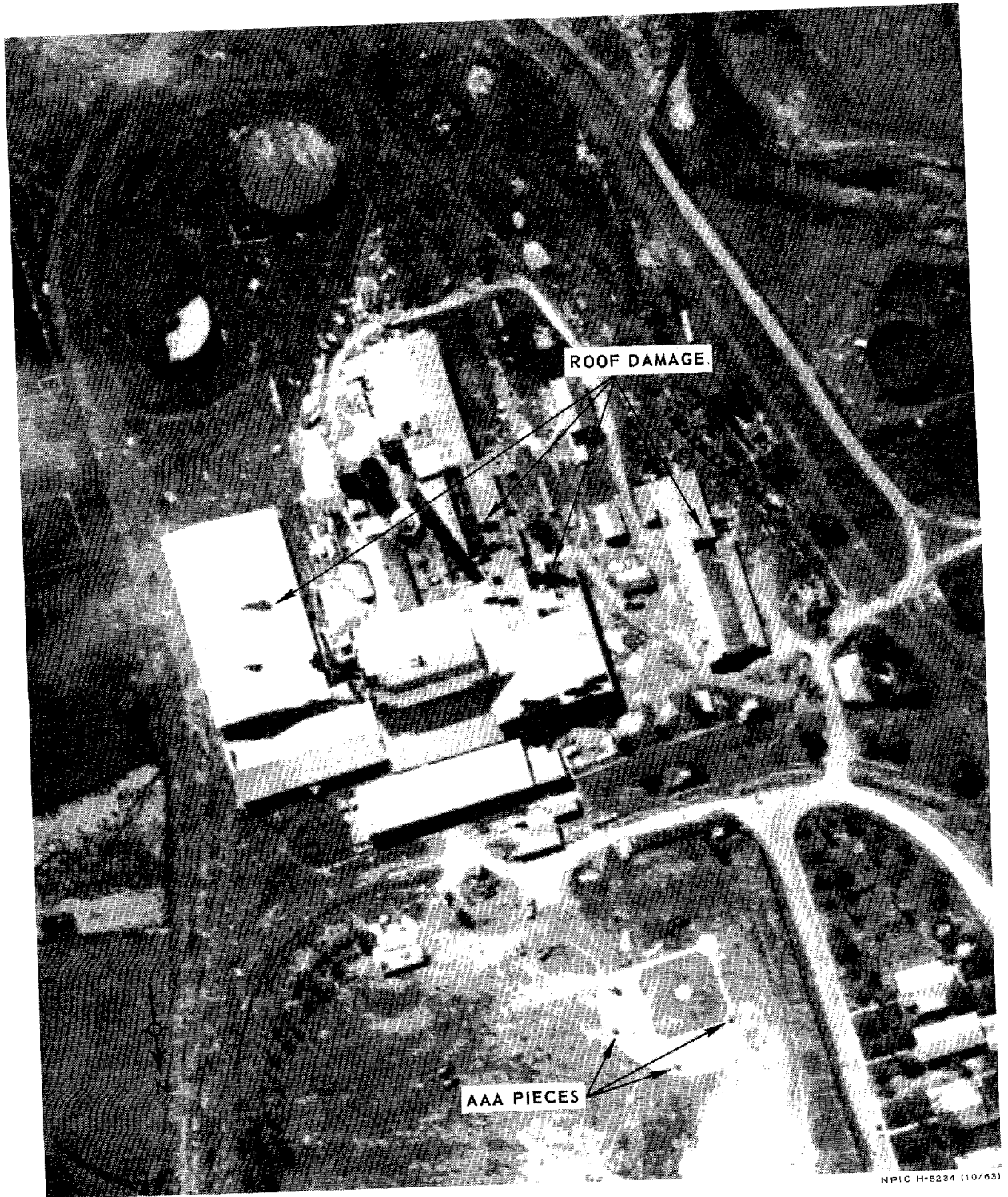
MANAGUA MILITARY CAMP PARKING AREA

SECRET

SECRET

NPIC/R-1530/63
ATTACHMENT 3

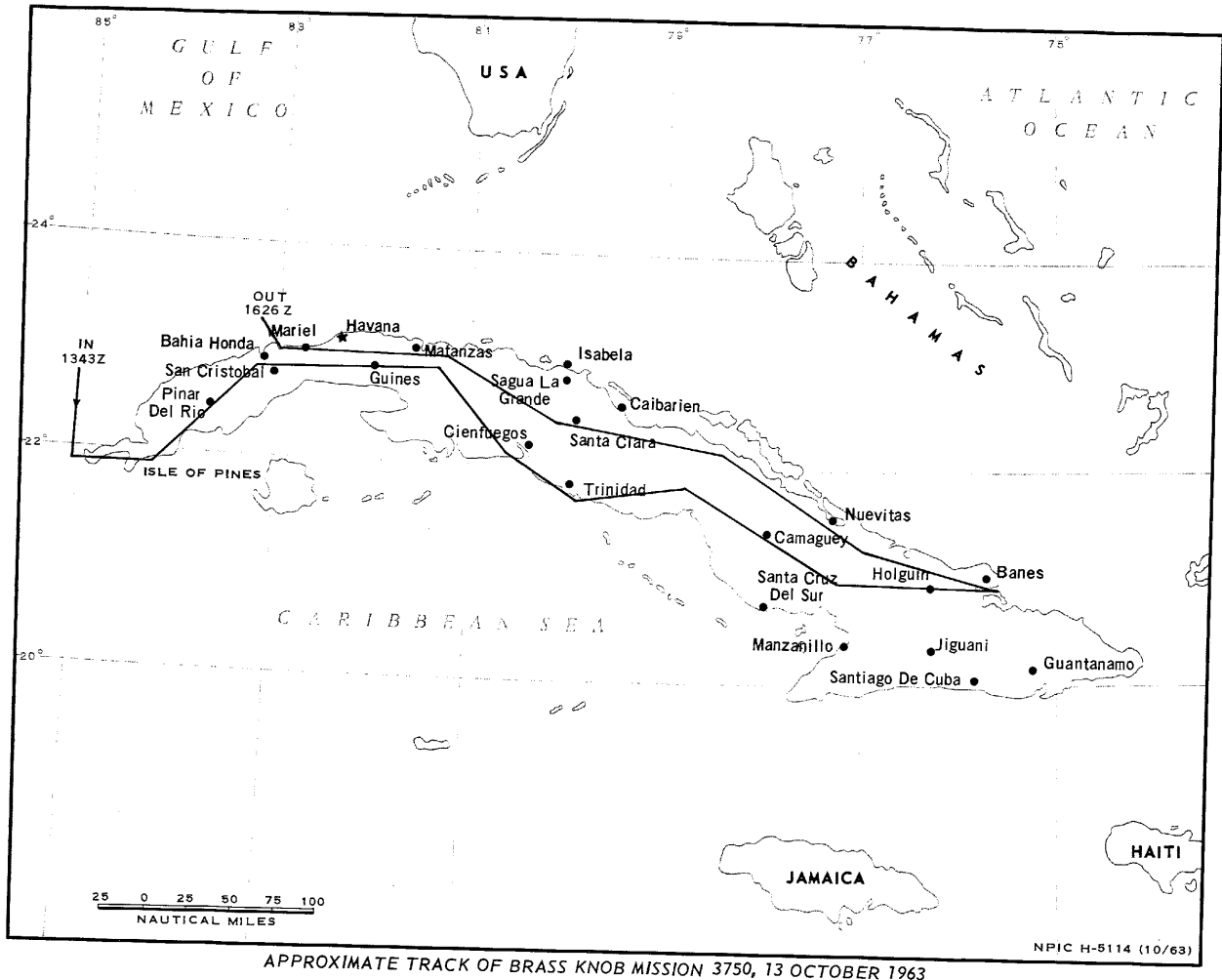
SECRET



NPIC H-5234 (10/63)

TACAJO SUGAR MILL

SECRET



SECRET

SECRET

NPIC/R-1530/63

~~SECRET~~

~~SECRET~~