

SECRET

Approved For Release 2003/02/27 : CIA-RDP78B04560A001600010046-1

25X1

NPIC/R-1503/63

October 1963



PHOTOGRAPHIC INTERPRETATION BRIEF

PORT FACILITIES, TANDJUNGPRIOK, INDONESIA



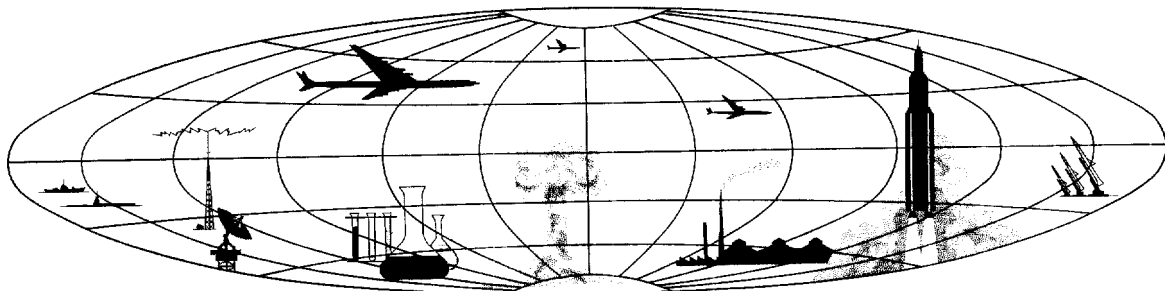
CIA



DIA

Declass Review by
NIMA/DOD

NATIONAL PHOTOGRAPHIC INTERPRETATION CENTER



Approved For Release 2003/02/27 : CIA-RDP78B04560A001600010046-1

SECRET

GROUP 1
Excluded from automatic
downgrading and declassification

25X1



WARNING

This document contains information affecting the national defense of the United States, within the meaning of Title 18, sections 793 and 794, of the U.S. Code, as amended. Its transmission or revelation of its contents to or receipt by an unauthorized person is prohibited by law.

SECRET

25X1

NATIONAL PHOTOGRAPHIC INTERPRETATION CENTER		PHOTO INTERPRETATION BRIEF	
Title: Port Facilities, Tandjungpriok, Indonesia	Geo Coords: 06-06S 106-52E		Publication No: NPIC/R-1503/63
	NPIC Target No: 0982-34		Date: October 1963

25X1

[Redacted]

25X1

References: AMS Series T503, Sheet SB 48-12, 1st ed, May 58 (U)
NPIC Project J-317/63

This rail-served port (Figure 1), situated on the north edge of Tandjungpriok, comprises a naval base, extensively quayed shoreline, 3 major basins, 2 shipyards, 3 boat repair yards, numerous piers and offshore wharfs, 4 floating drydocks, a POL storage area with 53 storage tanks, numerous warehouses and transient stor-

age sheds, and a breakwater. Since [Redacted] 1/ the breakwater has been extended east approximately 5,000 ft to the corner of Fisherman's Harbor where 2 small basins have been dug into the east bank and 4 small piers and 2 small boat basins with quayed shorelines have been constructed.

25X1

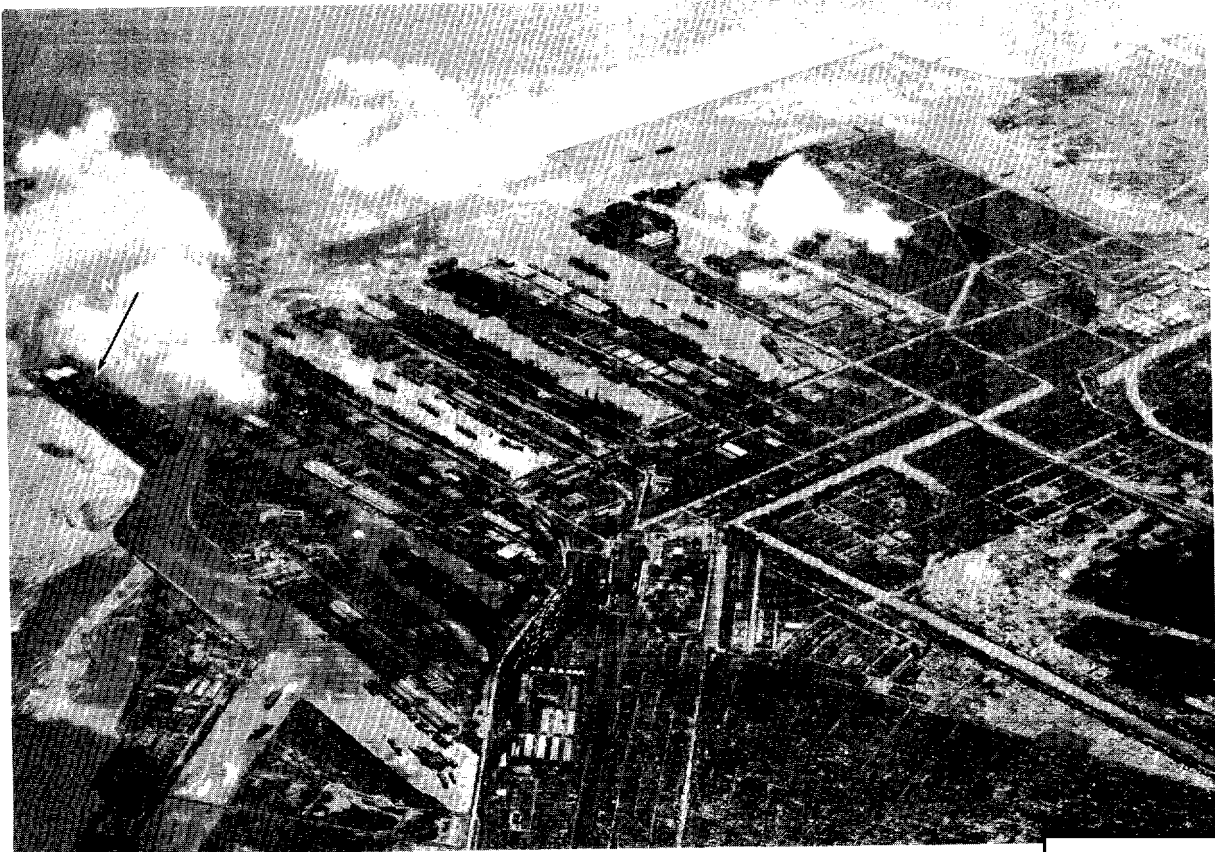


FIGURE 1. PORT FACILITIES, TANDJUNGPRIOK, INDONESIA, [Redacted]

25X1
25X1

SECRET

25X1

SECRET

25X1

NPIC/R-1503/63

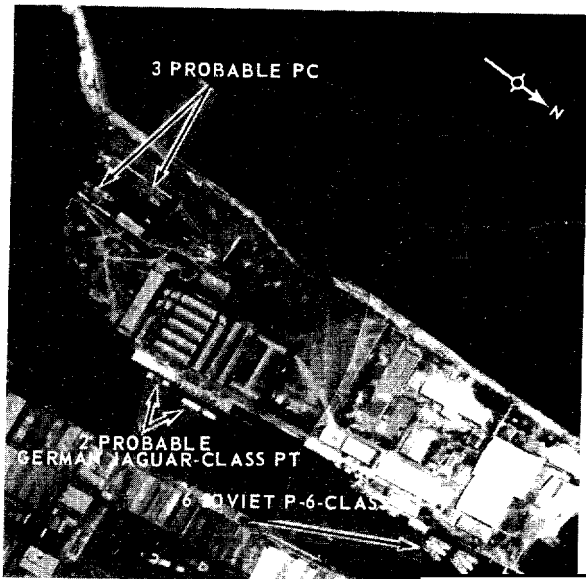


FIGURE 2. NAVAL BASE, TANDJUNGPRIOK, INDONESIA, [redacted]

Facilities at the naval base include a minor repair facility with marine railway, quayed shoreline, marginal wharf, 2 breasting plat-

forms, one pier, one jetty, and barracks/storage/administration buildings (Figure 2).

Vessels observed on [redacted] include 6 Soviet P-6-class PT, one probable Soviet P-6-class PT, one possible Soviet P-6-class PT underway, one probable [redacted] [redacted] 2 probable PC, one ex-U.S. LST, 89 freighters (including those outside the breakwater), one tanker, 2 passenger ships, and numerous small craft.

25X1

25X6
25X6

25X6



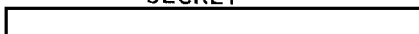
ADDITIONAL REFERENCE

1. NIS 100, Supplement I, Mar 56 (C)

25X1
25X1

SECRET

25X1



SECRET

Approved For Release 2003/02/27 : CIA-RDP78B04560A001600010046-1

25X1

Approved For Release 2003/02/27 : ~~SECRET~~ CIA-RDP78B04560A001600010046-1

25X1