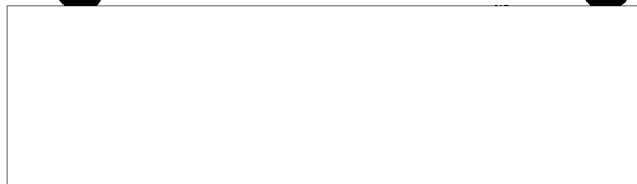


FLASH 25X1
OUT59503



Z 192224Z AUG 66
FM NPIC WASH DC
TO AIG NINE SEVEN SIX
RUEKDA/DIA PRODCEN
RUEKDA/NIC
BT

Mulle

1966 AUG 19 22 46Z

C O N F I D E N T I A L



25X1



CITE NPIC 8166.

25X1

PRELIMINARY SCAN BY NPIC OF MISSION BLUE SPRINGS 5165 OF 15
AUGUST 1966 REVEALS THE FOLLOWING INFORMATION ON TARGETS IN NORTH
VIETNAM.

A. THE FOLLOWING SA-2 SAM SITES WERE OBSERVED OCCUPIED.

1. HAI PHONG FIELD DEPLOYED SITE B01A-2 (NO. 121)

210207N 1064219E. SITE CONSISTS OF 3 OCCUPIED UNREVIEWED

LAUNCH POSITIONS AND AN OCCUPIED CENTRAL GUIDANCE AREA.

2. HAI PHONG SAM SITE A27-2 (NO. 99)

1063830E. SITE CONSISTS OF 5 OCCUPIED REVIEWED LAUNCH POSITIONS,

1 LAUNCH POSITION OCCUPANCY UNDETERMINED, OCCUPIED CENTRAL GUIDANCE

AREA.

B. THE FOLLOWING NAVAL ORDER OF BATTLE WAS OBSERVED:

1. HAI PHONG NAVAL BASE 2052N 10640E.

NOB: 2 SHANGHAI CLASS PTF 130 FT VERSION, 2 SWATOW CLASS PGM,
2 POSSIBLE CLASS MSM, 2 POSSIBLE CLASS YP, 4 U/I VESSELS.

2. HAI PHONG PORT 2052N 10642E.

DISTRIBUTION		
Cy No.	Office	Ac
8.9	CS	
	ADMIN	25X1
	SEC BR	
	P & DS	25X1
	CSD	
	IFD	
	PD	
	FSD	25X1
	PSD-ICB	
	TIP	
	IAD	25X1
	PAG	
	DIAX-4	
	SPAD	
	NSA-LO	
	DIA-AP	
		25X1

Advance copy

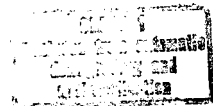
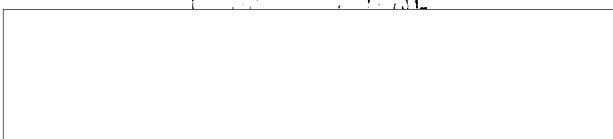
* Sanitized

Seen by D/P, E/D, S/A
25X1
25X1



3000

25X1



25X1

-2-

NOB: 1 SHANGHAI CLASS PTF 130 FT VERSION 1 POSSIBLE SHANGHAI CLASS
PTF 130 FT, 2 SO-1 CLASS SC, 1 CONVERTED LST-1 CLASS TANKER, 2
YO, 1 SMALL TUG.

COMMERCIAL SHIPPING: 4 LARGE HATCH FREIGHTERS, 1 CONVENTIONAL LARGE
FREIGHTERS, 1 SMALL FREIGHTER, AND NUMEROUS OTHER SMALL VESSELS.

3. HAI PHONG SHIPYARD NO. 4 BE NONE, 2052N 10640E.

NOB: 1 SWATOW CLASS PGM IN WATER, 2 SWATOW CLASS PGM IN GRAVING
DOCK, 1 PROBABLE P-4 CLASS PT IN GRAVING DOCK, 1 POSSIBLE YP IN
GRAVING DOCK, 4 POSSIBLE YP IN WATER.

[REDACTED]

25X1

GP-1

C O N F I D E N T I A L

[REDACTED]

25X1

[REDACTED]

25X1

--END OF MESSAGE--

S/C NOTE: ALSO PASSED PRIORITY SAIGON INFO [REDACTED] DIRECTOR,
VIENTIANE, UDORN, CLARK FIELD CITE NPIC 8166.

25X1