

NPIC ROUTING SLIP

25X1

FROM:

[Redacted box]

DATE: 22/4/66

	TO	INITIALS	DATE	REMARKS
DIR				PA6 cables
DEP/DIR				
EXEC/DIR	1	CW		
ASST FOR ADMIN				
ASST FOR OPS	2			
ASST FOR PA				
ASST FOR P&D				
CH/CSD				
CH/IPD				
CH/PD				
CH/PSD				
CH/TID				
CH/CIA/PID				
CH/DIA/XX-4				
CH/DIA/AP-IP				
CH/SPAD				
LO/CGS/CIA				
LO/NSA				

25X1

TOP SECRET

SECURITY

OUT58298

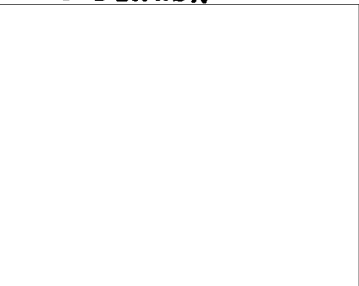
1966 APR 22 01 27Z

*multi*

P 220114Z  
FM NPIC  
TO AFSSO USAF  
AFSSO PACAF



OPCEN  
CNO  
CINCPAC  
CINCPACFLT  
COMSEVENFLT  
INFO DIRNSA



22 APR 1966

STATE/RCI  
CINCLANTFLT  
CINCUSNAVEUR  
CINCLANT  
LANTINTCEN  
FICPAC  
FICEUR  
COMNAVFORJAPAN  
COMSECONDFLT  
YDHAVQC/CINCEUR  
YHLAKAC/USARPAC  
AFSCC  
AFSSO ACIC  
AFSSO FID  
AFSSO AFSC  
AFSSO BSD  
AFSSO ESD  
AFSSO SSD  
AFSSO TAC  
AFSSO USAFE  
ZEM

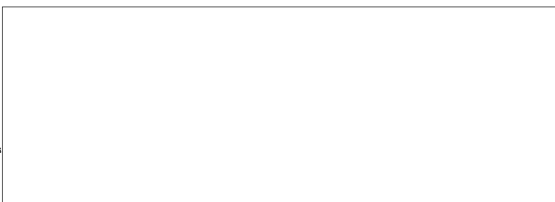
Handwritten numbers 1-7 and asterisks with checkmarks.

TOP SECRET

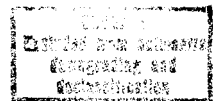


CITE NPIC 6989.

REF NPIC 6964



TOP SECRET



-2-

FURTHER STUDY OF THE ACTIVITY AT 23-13-20N/104-37-25E,  
APPROXIMATELY 23.1 NM SOUTHEAST OF WEN-SHEN, CHINA REVEALS A  
PATTERN OF DRAINAGE DITCHING RATHER THAN A SA-2 SITE.



25X1

GP-1

T O P S E C R E T



25X1

--END OF MESSAGE--

1



25X1