

TOP SECRET

FLASH

25X1

OUT57079

1965 NOV 6 18 20Z

8 NOV 1965

Z 061811Z ZYH
FM NPIC
TO DIRNSA
CNO

multi



DISTRIBUTION		
Cy No.	Office	Action
5	File	
	OS	
3	ADMIN	
	SEC BR	
	P & DS	
	CSD	✓
	IPD	
	PD	
	PSD	
	PSD-ICB	
	TID	
	IAD	
4,5		
6	PAG *	
	DIAXX-4	
7	SPAD *	
	NSA-LO	
	DIA-AP	

25X1

1

OPCEN
 STATE/RCI
 CINCLANTFLT
 CINCPACFLT
 CINCUSNAVEUR
 CINCLANT
 CINCPAC
 LANTINTCEN
 FICPAC
 COMNAVFORJAPAN
 COMSECONDFLT
 YDHAQC/CINCEUR
 YHLAKAC/USARPAC
 AFSSO ALCOM/AAC
 AFSSO USAFE
 AFSSO PACAF
 AFSSO USAF
 YWQADKC/AFSCC
 YWQLAZC/AFSSO SSD
 YWQLAZC/AFSSO SAC
 YWQLAZC/AFSSO BSD
 YWQLAZC/AFSSO FTD
 YWQLAZC/AFSSO CONAD
 YWQLAZC/AFSSO ACIC
 YWQLAZC/AFSSO AFSC
 YWQLAZC/AFSSO ESD
 INFO FICEUR
 ZEM

Declass Review by NGA

Advance copy
 * Sanitized
read by
Dir
Dep Dir
Exec Dir
 8 Nov. 1965
 A. J. S.

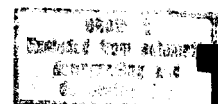
25X1

TOP SECRET [Redacted] CITE NPIC 5818
 A CONTINUING STUDY OF MISSION 1026-1 REVEALS A NEWLY IDENTIFIED

SA-2 SAM SITE (NO. 38) UNDER CONSTRUCTION 18.7 NM NW OF HAIPHONG,
 NORTH VIETNAM AT 21-07-00N/106-30-10E. SITE CONSISTS OF 6 PROBABLE

25X1

TOP SECRET



**UNREVIEWED LAUNCH POSITIONS AND A PROBABLE UNREVIEWED CENTRAL GUIDANCE
AREA.**

[REDACTED]

25X1

MAP REF: USAIC, SERIES 200, SHEET 0616-20HL 2ND ED JAN 64 GP-1

T O P S E C R E T [REDACTED]

25X1

END OF MESSAGE

1

(ALSO PASSED TO [REDACTED])

25X1