

00 500000-01-001
00 500000-01-001

DEPARTMENT OF THE ARMY SUPPLY CATALOG

File 

Helipad
Const.

SEES, ITEMS, AND OUTFITS COMPONENTS LIST.

ARMY Declass/Release Instructions On File
Declassification/Release Instructions on File

STATINTL

MEMBRANE SURFACING OUTFIT,

STATINTL

AIRFIELD ROADS:



FEDERAL STOCK NO. 5680-921-8730 Part I

FEDERAL STOCK NO. 5680-921-8731 Part II

HEADQUARTERS, DEPARTMENT OF THE ARMY

OCTOBER 1966

SUPPLY CATALOG

No. 5680-93-CL-E01

HEADQUARTERS
DEPARTMENT OF THE ARMY
WASHINGTON, D.C., 28 October 1966

Sets, Kits, and Outfits Components List

MEMBRANE SURFACING OUTFIT, AIRFIELD ROADS:

(Federal Stock No. 5680-921-8730 Part I)

(Federal Stock No. 5680-921-8731 Part II)

This catalog is current to 18 October 1966

Section I. INTRODUCTION

1. General. This section provides information regarding the contents and use of this Sets, Kits, and Outfits Components List (CL), applicable to MEMBRANE SURFACING OUTFIT, AIRFIELD ROADS, Federal Stock No. 5680-921-8730, Part I and 5680-921-8731, Part II.

2. Purpose. a. Prefabricated membrane is used as a protective covering for Airfields and Taxiways to prevent deterioration of the bearing ability of the soil surface by the addition of water. It is also useful as a protective diaper for roadways in areas readily debilitated by the addition of water. The membrane effectively substitutes as a dust palliative where helicopter rotor or propeller blasts may erode the surfaces. It has a nonskid surfacing which also assists in decreasing the length of landing roll-out.

b. This catalog contains pertinent information relative to the components which comprise a "collection" type item. Collection type items normally are issued and identified as assortments, groups, kits, outfits, sets or systems.

c. This catalog furnishes component identification data for collection type items used by the Department of the Army and Defense Supply Centers, which may be managed by the DA or DSC.

d. This catalog is identified by a five-part numbered symbol. The first segment, SC, denotes that it is a supply catalog. The second segment, 5680, identifies the Federal supply classification (FSC). The third segment, 93 identifies the compiler. The fourth segment, CL, denotes the sets, kits, and outfits components list type catalog. The fifth segment, E35, indicates that there is more than one catalog prepared in FSC 5680 for these type sets, kits, and outfits components lists.

3. Responsibility. a. The U. S. Army Mobility Equipment Command has the responsibility of preparing and maintaining this supply catalog.

b. The initial issue and/or replacement of items listed is the responsibility of Defense Supply Construction Center, except for the following:

*This catalog supersedes SC 5680-93-CL-E01, 27 March 1966

Approved For Release 2001/08/31 : CIA-RDP78-06505A000900040001-3

is furnished by Defense Construction Supply Center (DCS) with this set. Requisitions for replacements must be submitted to the Army Managing Activity, the Defense Supply Center, or GSA, as designated in the Managing Activity Column.

4. **Composition of Catalog.** The components list is arranged in alphabetical sequence by item name, and contains the following data:

a. **Action Code (ACT).** Symbols shown in the action code column indicate the type of action taken in the catalog. The action symbols used are defined as follows:

- C—Indicates a change in data since the previous publication.
- D—Indicates that an item has been deleted.
- N—Indicates an item is being published for the first time.
- R—Indicates a replacement action to an item. The replacement phrase following the FSN indicates the type of action.

b. **Federal Stock Number (FSN).** A number listed in this catalog for use in all supply operations.

c. **Managing Activity (MA).** The two character alphabetic code identifying the Department of the Army, Defense Supply Center, or the General Services Administration commodity manager having supply responsibility for the item. Managing activity codes reflected are as follows:

Code	Activity
AJ-----	Commanding General U. S. Army Mobility Equipment Command 4300 Goodfellow Boulevard St. Louis, Mo., 63120
AX-----	Commander Defense Construction Supply Center Attn: DCSC-DT/CC Columbus, Ohio, 43215
CY-----	Commander Defense Personnel Support Center Attn: DPSC-TTF 2800 South 20th Street Philadelphia, Pa., 19101
75-----	General Services Administration

Note. Items reflecting code "75" are items for which GSA will furnish supply support. The source of supply for GSA items will be reflected in the applicable DA or DSA Management Data List (ML).

a. **Description.** The item descriptions included are listed in alphabetical sequence by item name, with additional descriptive information required for identification.

- (1) The first description shown is that for the set. Subsequent descriptions are for the component items.
- (2) Manufacturer's code, part numbers and/or the applicable specification references will follow the description when applicable. Notes (e.g. Note B) are explained in paragraph 3b.
- (3) Pertinent information applicable to the set of equipment is shown following the last component.

e. **Unit of Issue (U/I).** These are established standard minimum quantities in which an item of supply is issued. Abbreviations used appear in paragraph 6.

f. **Quantity Per Set (QTY).** This column lists the quantities of each component item issued.

g. **Expendability — Recoverability (EXP-REC) Code.** This code indicates expendability — recoverability of the item of supply as determined by the managing activity. Definitions of codes used are as follows:

Code	Definition
X-----	Expendable —When issued, the item is consumed in maintenance operations, or loses its identity in a large assembly, and is therefore dropped from accountability. See AR 735-5.
NX-----	Non-expendable —The item ordinarily retains its original identity during the period in use, is not consumed and is not dropped from accountability records. See AR 735-5.
R-----	Recoverable —Items which are economically repairable by field maintenance and are normally furnished by supply on exchange basis.
T-----	Recoverable —High dollar value recoverable items which are subject to special handling and are issued on an exchange basis. Such items are normally repaired or overhauled at depot maintenance activities.
U-----	Recoverable —Items specifically selected for salvage by reclamation units because of precious metal content, critical materials, high dollar value reusable castings, and the like.

h. Illustration Number (ILL NO.). A number assigned to cross-reference the illustrated material to the subject item.

5. Manufacturer's Code to Name. Manufacturer's codes contained in this catalog are listed in numerical sequence and cross-referenced to the manufacturer's name.

Code	Manufacturer
16236	Defense Construction Supply Center
20697	Pittsburgh Plate Glass Company
81348	Federal Specifications
81349	Military Specifications
91426	W. P. Fuller and Company

5. Abbreviations.

CN.....can
CS.....case
EA.....each
ft.....foot (feet)
gal.....gallon (s)
h.....height, high
in.....inch (es)
lg.....long, length
od.....outside diameter (s)

oz.....ounce (s)
PR.....Pair
RL.....Roll
sq.....square
thd.....thread (s) (ed)
w.....wide, width
w/.....with
wt.....weight, weigh
yd.....yard (s)

7. Comments, Suggestions and Corrections. Comments, suggestions, and corrections pertaining to this catalog should be directed to the Commanding General, U. S. Army Mobility Equipment Command, ATTN: AMSME-ST, 4300 Goodfellow Blvd., St. Louis, Mo. 63120.

8. Special Instructions. Requisitioning of component items refer to the applicable Department of the Army Supply Catalog (e.g., SC ML-series), or Defense Supply Center Catalog (e.g., C ML-series) pertaining to the FSC class.

A C T	FEDERAL STOCK NUMBER	MA	DESCRIPTION	U/I	QTY	EXP REC	ILL. NO.
			PART 1				
	5680-921-8730	AX	MEMBRANE SURFACING OUTFIT, AIRFIELD- ROADS: runway; 16236-----SC 5680-93-CL-E01 16236-----PD 12-16-1965 Consisting of the following components:	SE			NX
C	5610-921-5761	AJ	ADHESIVE RUNWAY: 5 gal can; 20697-----G580-25 (See Note B)	CN	2	X	
C	5680-782-6894	AJ	ANCHOR, SURFACING: membrane; 16236-----CS5680-0002 (See Note B)	EA	26	X	
D	5680-999-0400						
C	5610-921-5762	AJ	COMPOUND, NON-SKID: 5 gal can; 91426-----201 (See Note B)	CN	10	X	
	8020-682-6491	75	COVER, PAINT ROLLER: 9 in. lg; vinyl-acrylonitrile copolymer material, 26 to 28 oz wt per sq yd; 3/8 in. pile h; 81349-----R-17987, type II (See Note B)	EA	12	X	
N	8415-682-6786	CY	GLOVES, PLASTIC, DISPOSABLE: men and women; polyethylene film; featherlight wt; 14 in. lg, gauntlet; natural color, medium size (See Note B)	PR	48	X	
	7920-682-6512	75	HANDLE, WOOD: Acme thd end, 48 in. lg, 3/4 in. axial lg thd end; 11/16 in. od thd, 5 thd per in.; stainless steel thd end cap (See Note B)	EA	2	X	
C	5680-921-6512	AJ	MEMBRANE, SURFACING: filament nylon yarn woven; 3 ft w, 180 ft lg; for airfield surfacing; 16236-----PD 12-16-1965 (See Note B)	RL	1	NX	
C	5680-921-5809	AJ	MEMBRANE, SURFACING: filament nylon yarn woven; 66 ft w, 100 ft lg; for airfield surfacing; 16236-----PD 12-16-1965 (See Note B)	RL	1	NX	
	8020-753-4915	75	ROLLER, PAINT: dip type "DYNEL" flush knitted black fabric; 9 in. lg, 3/8 in. pile h; slip-off design; 81349-----R-17987, type II (See Note B)	EA	2	X	
N	8520-550-6417	75	SOAP, GRIT: w/mineral abrasive; 4 to 5 oz cake; 100 cakes per case; 81348-----P-S-576 (See Note B)	CS	1	X	

SECTION II - LIST OF COMPONENTS

A C T	FEDERAL STOCK NUMBER	MA	DESCRIPTION	U/I	QTY	EXP REC	ILL. NO.
			PART 2				
	5680-921-8731	AX	MEMBRANE SURFACING OUTFIT, AIRFIELD-ROADS: taxi-way; 16236-----SC 5680-93-CL-E01 16236-----PD 12-16-1965 Consisting of the following components:	SE		NX	
C	5610-921-5761	AJ	ADHESIVE RUNWAY: 5 gal can; 20697-----G580-25 (See Note B)	CN	1	X	
C	5680-782-6894	AJ	ANCHOR, SURFACING: membrane; 16236-----CS 5680-0002 (See Note B)	EA	18	X	
D	5680-999-0400						
	8020-682-6491	75	COVER, PAINT ROLLER: 9 in. lg; vinyl-acrylonitrile copolymer material; 26 to 28 oz wt per sq yd; 3/8 in. pile h; 81349 -----R-17987 (See Note B)	EA	12	X	
N	8415-682-6786	CY	GLOVES, PLASTIC, DISPOSABLE: men and women; polyethylene film; featherlight wt; 14 in. lg, gauntlet; natural color, medium size (See Note B)	PR	48	X	
	7920-682-6512	75	HANDLE, WOOD: Acme thd end, 48 in. lg, 3/4 in. axial lg thd end; 11/16 in. od thd, 5 thd per in.; stainless steel thd end cap (See Note B)	EA	2	X	
C	5680-921-6512	AJ	MEMBRANE, SURFACING: filament nylon yarn woven; 3 ft w, 180 ft lg; for airfield surfacing; 16236-----PD 12-16-1965 (See Note B)	RL	1	NX	
C	5680-921-5810	AJ	MEMBRANE, SURFACING: filament nylon yarn woven; 36 ft w, 100 ft lg; for airfield surfacing; 16236-----PD 12-16-1965 (See Note B)	RL	1	NX	
	8020-753-4915	75	ROLLER, PAINT: dip type "DYNEL" flush knitted back fabric; 9 in. lg, 3/8 in. pile h; slip-off design; 81349 -----R-17987, type II (See Note B)	EA	2	X	
N	8520-550-6417	75	SOAP, GRIT: w/mineral abrasive; 4 to 5 oz cake; 100 cakes per case; 81348-----P-S-576 (See Note B)	CS	1	X	

By Order of the Secretary of the Army:
Approved For Release 2001/08/31 : CIA-RDP78-06505A000900040001-3

HAROLD K. JOHNSON,
*General, United States Army,
Chief of Staff.*

Official:

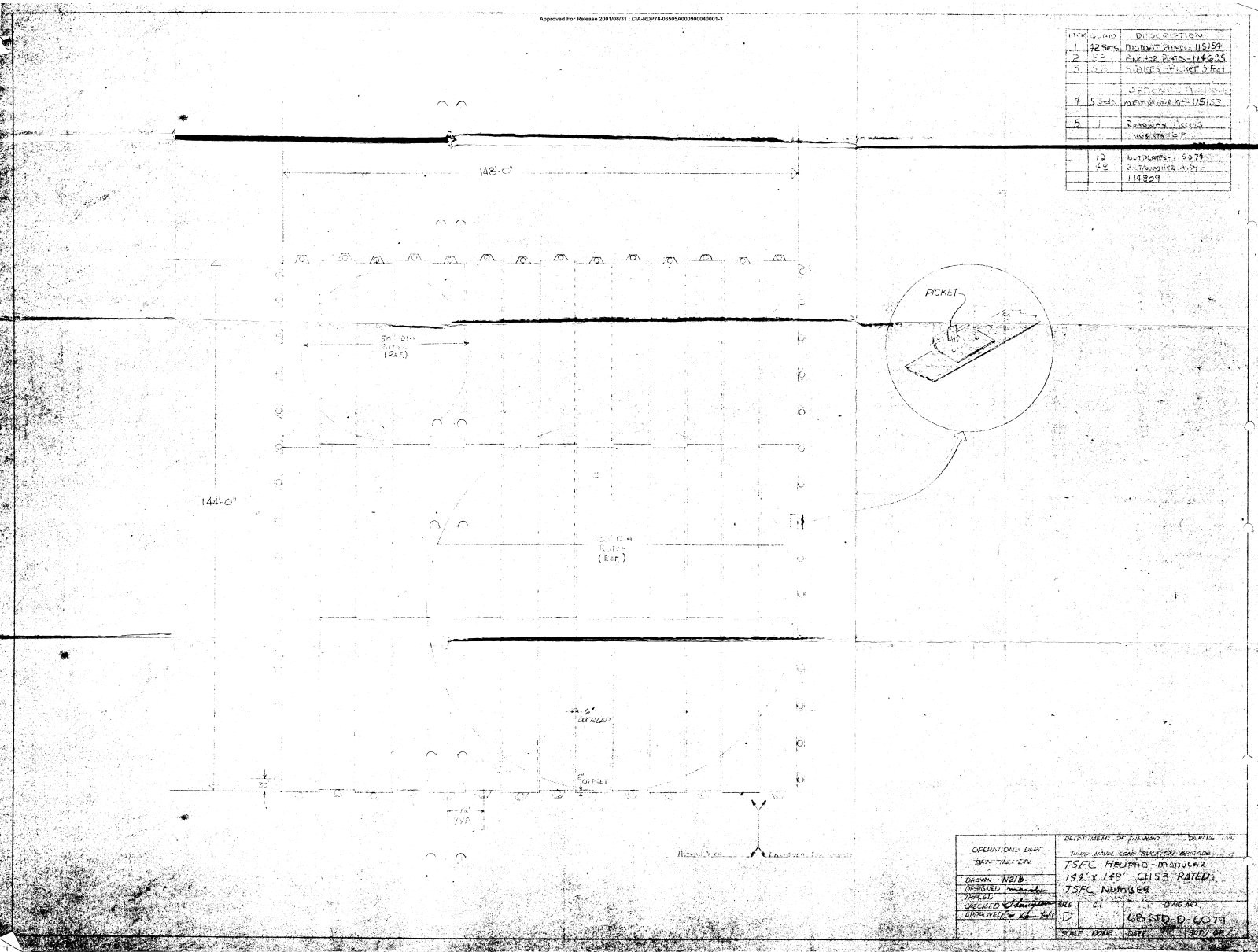
KENNETH G. WICKHAM,
*Major General, United States Army,
The Adjutant General.*

Distribution:

To be distributed in accordance with DA Form 12-21 requirements for FSC Group 56-CL.

☆ U. S. GOVERNMENT PRINTING OFFICE: 1966-254429/1681

ITEM	QUANTITY	DESCRIPTION
1	42 Sets	MODULAR PANEL 114325
2	52	ANCHOR BOLTS 114425
3	0.8	SHAKES PLANT 5 feet
4	5 Sets	ANCHOR BOLTS 114425
5		SHAKES PLANT
6		ANCHOR BOLTS 114425
7		SHAKES PLANT 5 feet
8		ANCHOR BOLTS 114425
9		SHAKES PLANT
10		ANCHOR BOLTS 114425
11		SHAKES PLANT
12		ANCHOR BOLTS 114425
13		SHAKES PLANT
14		ANCHOR BOLTS 114425
15		SHAKES PLANT
16		ANCHOR BOLTS 114425
17		SHAKES PLANT
18		ANCHOR BOLTS 114425
19		SHAKES PLANT
20		ANCHOR BOLTS 114425
21		SHAKES PLANT
22		ANCHOR BOLTS 114425
23		SHAKES PLANT
24		ANCHOR BOLTS 114425
25		SHAKES PLANT
26		ANCHOR BOLTS 114425
27		SHAKES PLANT
28		ANCHOR BOLTS 114425
29		SHAKES PLANT
30		ANCHOR BOLTS 114425
31		SHAKES PLANT
32		ANCHOR BOLTS 114425
33		SHAKES PLANT
34		ANCHOR BOLTS 114425
35		SHAKES PLANT
36		ANCHOR BOLTS 114425
37		SHAKES PLANT
38		ANCHOR BOLTS 114425
39		SHAKES PLANT
40		ANCHOR BOLTS 114425
41		SHAKES PLANT
42		ANCHOR BOLTS 114425
43		SHAKES PLANT
44		ANCHOR BOLTS 114425
45		SHAKES PLANT
46		ANCHOR BOLTS 114425
47		SHAKES PLANT
48		ANCHOR BOLTS 114425
49		SHAKES PLANT
50		ANCHOR BOLTS 114425
51		SHAKES PLANT
52		ANCHOR BOLTS 114425
53		SHAKES PLANT
54		ANCHOR BOLTS 114425
55		SHAKES PLANT
56		ANCHOR BOLTS 114425
57		SHAKES PLANT
58		ANCHOR BOLTS 114425
59		SHAKES PLANT
60		ANCHOR BOLTS 114425
61		SHAKES PLANT
62		ANCHOR BOLTS 114425
63		SHAKES PLANT
64		ANCHOR BOLTS 114425
65		SHAKES PLANT
66		ANCHOR BOLTS 114425
67		SHAKES PLANT
68		ANCHOR BOLTS 114425
69		SHAKES PLANT
70		ANCHOR BOLTS 114425
71		SHAKES PLANT
72		ANCHOR BOLTS 114425
73		SHAKES PLANT
74		ANCHOR BOLTS 114425
75		SHAKES PLANT
76		ANCHOR BOLTS 114425
77		SHAKES PLANT
78		ANCHOR BOLTS 114425
79		SHAKES PLANT
80		ANCHOR BOLTS 114425
81		SHAKES PLANT
82		ANCHOR BOLTS 114425
83		SHAKES PLANT
84		ANCHOR BOLTS 114425
85		SHAKES PLANT
86		ANCHOR BOLTS 114425
87		SHAKES PLANT
88		ANCHOR BOLTS 114425
89		SHAKES PLANT
90		ANCHOR BOLTS 114425
91		SHAKES PLANT
92		ANCHOR BOLTS 114425
93		SHAKES PLANT
94		ANCHOR BOLTS 114425
95		SHAKES PLANT
96		ANCHOR BOLTS 114425
97		SHAKES PLANT
98		ANCHOR BOLTS 114425
99		SHAKES PLANT
100		ANCHOR BOLTS 114425



OPERATIONAL DATA	DESIGNATION OF DRAWING	DRAWING NO.
DESIGNER: JAC/CPK	TRUSS BRIDGE MODULAR PANELS	194-148-CH53-RATED
DRAWN: INZ/B	TRUSS BRIDGE MODULAR PANELS	TRUSS BRIDGE MODULAR PANELS
CHECKED: JAC/CPK	TRUSS BRIDGE MODULAR PANELS	TRUSS BRIDGE MODULAR PANELS
DATE: 11/1/57	TRUSS BRIDGE MODULAR PANELS	TRUSS BRIDGE MODULAR PANELS
SCALE: 1/8" = 1'-0"	TRUSS BRIDGE MODULAR PANELS	TRUSS BRIDGE MODULAR PANELS
DATE: 11/1/57	TRUSS BRIDGE MODULAR PANELS	TRUSS BRIDGE MODULAR PANELS