

PHOTO NO. 311450 LOT NO. 1929 MAP REFERENCE C LATITUDE 31 14N LONGITUDE 121 25E

COUNTRY CHINA Approved For Release 2003/12/01 : CIA-RDP78-05867A000200730028-8

AREA NO. 5816 SUBJECT ALA AL9 AKN AKF

SHANGHAI BR E A K W A T E R
 AT M C U T H O F W H A N G P O
 O R I V E R N A N K I N G - S H A N G H A I

RAILROAD WHARVES.

PART 2 OF 6 PART PAN. PAN INCLUDES

PHOTO# 32-40 CITED IN REPORT.

SEE SKETCH CIA #3

25X1 25X1 25X1A

DATE OF PHOTO	TYPE	QUALITY	CLASS	NO. OF CARDS
7 SEPT 57	4	2	C	4

Approved For Release 2003/12/01 : CIA-RDP78-05867A000200730028-8

CONFIDENTIAL

PHOTO NO. 311451 LOT NO. 1727 MAP REFERENCE C LATITUDE 31 14N LONGITUDE 121 28E
 COUNTRY CHINA Approved For Release 2003/12/01 : CIA-RDP78-05867A000200730028-8

AREA NO. 581L SUBJECT ALA AL9 AKN AK8 SUBJECT SUBJECT SUBJECT SUBJECT
 SHANGHAI BR EAK WATER
 OT MOUTH OF WHANGPO
 O RIVER NANKING-SHANGHAI

RAILROAD WHARVES
 PART 3 OF 6 PART PAN. PAN INCLUDES
 PHOTO 32-40 CITED IN REPORT.
 SEE SKETCH CIA #3

25X1 25X1 25X1A

DATE OF PHOTO	TYPE	QUALITY	CLASS	NO. OF CARDS
7 SEPT 57	4	2	C	4

CLASSIFICATION CONFIDENTIAL Approved For Release 2003/12/01 : CIA-RDP78-05867A000200730028-8

PHOTO NO. 311452 LOT NO. MAP REFERENCE LATITUDE LONGITUDE

COUNTRY Approved For Release 2003/12/01 : CIA-RDP78-05867A000200730028-8

AREA NO.	SUBJECT	SUBJECT	SUBJECT	SUBJECT	SUBJECT	SUBJECT	SUBJECT	SUBJECT	SUBJECT
11	ALA	AL9	AKS	ALG					
M T M O U T H O F W H A N G P O									
O R I V E R N A N K I N G - S H A N G H A I									

RAILROAD WHARVES.

PART 5 OF 6 PART PANORAMA. PAN INCLUDES
PHOTOS 32-40 CITED IN REPORT.

SEE SKETCH CIA {# 3}

25X1 25X1 25X1A

DATE OF PHOTO	TYPE	QUALITY	CLASS	NO. OF CARDS
11/17/57	4	2	C	4

CONFIDENTIAL Approved For Release 2003/12/01 : CIA-RDP78-05867A000200730028-8

PHOTO NO. 311453 LOT NO. MAP REFERENCE LATITUDE LONGITUDE

Approved For Release 2003/12/01 : CIA-RDP78-05867A000200730028-8

COUNTRY CHINA

AREA NO.	SUBJECT	SUBJECT	SUBJECT	SUBJECT	SUBJECT	SUBJECT	SUBJECT	SUBJECT
3511	ALA	AL9	AK8					

8	10	12	20
S H A N G H A I	B R I D G E	W A T E R	

22	30	32	40
A T	M O U T H	W H I	W I F E C

44	50		
O R I V E R		N A N K I N G - S H A N G H A I	

RAILROAD WHARVES

PART 4 OF 6 PART PANORAMA. PAN INCLUDES

PHOTOS 32-40 CITED IN REPORT.

SEE SKETCH CIA 3-31

25X1 25X1 25X1A

DATE OF PHOTO	TYPE	QUALITY	CLASS	NO. OF CARDS
7 6 P T S 7	4	2	C	3

CONFIDENTIAL Approved For Release 2003/12/01 : CIA-RDP78-05867A000200730028-8

PHOTO ANALYSIS REPORT

PHOTO NO. 11157 LOT NO. MAP REFERENCE LATITUDE LONGITUDE
 Approved For Release 2003/12/01 : CIA-RDP78-05867A000200730028-8 28E

COUNTRY CHINA PROVINCE KIANGSU

AREA NO	SUBJECT	SUBJECT	SUBJECT	SUBJECT	SUBJECT	SUBJECT	SUBJECT	SUBJECT
581L	ALA	AL9	AK8					

SHANGHAI BREAKWATER

AT MOUTH OF WHANGPO

OR RIVER NANKING-SHANGHAI

RAILROAD WHARVES.

PART 6 OF 6 PART PANORAMA. PAN INCLUDES PHOTOS

32-40 CITED IN REPORT.

SEE SKETCH CIA #37

25X1 25X1 25X1A

DATE OF PHOTO	TYPE	QUALITY	CLASS	NO. OF CARDS
7 SEPT 57	4	2	C	3

PHOTO NO. 311455
 APPROVED FOR RELEASE 2003/12/01 : CIA-RDP78-05867A000200730028-8

COUNTRY CHINA
 MAP REFERENCE C
 LATITUDE 36 44 N
 LONGITUDE 121 28 E

AREA NO	SUBJECT	SUBJECT	SUBJECT	SUBJECT	SUBJECT	SUBJECT	SUBJECT	SUBJECT	SUBJECT
581L	ALA	AL9	C20	AKS					
SHAN	G	H	A	I	B	R	E	A	K
A	T	M	O	U	T	H	O	F	W
O	R	I	V	E	R				
UNIDENTIFIED BLOG AT NANKING SHANGHAI RAILROAD WHARVE. PICTURE INCLUDE PHOTOS 30-31 CITED IN REPORT. SEE SKETCH CIA 3035									

25X1		25X1		25X1A	
DATE OF PHOTO	TYPE	QUALITY	CLASS	NO. OF CARDS	
7 SEPT 57	4	2	C	3	

APPROVED FOR RELEASE 2003/12/01 : CIA-RDP78-05867A000200730028-8

PHOTO NO. 311456 LOC NO. MAP REFERENCE LATITUDE LONGITUDE

COUNTRY Approved For Release 2003/12/01 : CIA-RDP78-05867A000200730028-8

AREA NO	SUBJECT	SUBJECT	SUBJECT	SUBJECT	SUBJECT	SUBJECT	SUBJECT	SUBJECT
51L	ALB	AL9	7K4	7K6				

O R I V I N . UNIDENTIFIED (WHARVES)
 BLDG AT NANKING-SHANGHAI RAILROAD WHARVES.
 PART @ OF 2 PART PAN PAN INCLUDES PHOTO
 25-29 CITED IN REPORT.
 SEE SKETCH CIA (45)

DATE OF PHOTO	TYPE	QUALITY	CLASS	NO. OF CARDS
1948	5	7	4	2
			C	4

Approved For Release 2003/12/01 : CIA-RDP78-05867A000200730028-8

PHOTO NO. 311437 LOT NO. MAP REFERENCE LATITUDE LONGITUDE

COUNTRY Approved For Release 2003/12/01 : CIA-RDP78-05867A000200730028-8

AREA NO	SUBJECT	SUBJECT	SUBJECT	SUBJECT	SUBJECT	SUBJECT	SUBJECT	SUBJECT
711	AL8	AL9	AL4					

UNIDENTIFIED BLDG AT NANKING - ZHANGHAI RAILROAD WHARVES. PART 2 OF 2 PART PAN. PAN INCLUDES PHOTOS 25-29 CITED IN REPORT.

SEE SKETCH CIA [3]

25X1

25X1A

DATE OF PHOTO	TYPE	QUALITY	CLASS	NO. OF CARDS
11/17/57	4	2	C	3

Approved For Release 2003/12/01 : CIA-RDP78-05867A000200730028-8

PHOTO NO. 111550 LOT NO. L727 MAP REFERENCE C LATITUDE 31 14N LONGITUDE 121 28E
 COUNTRY CHINA Approved For Release 2003/12/01 : CIA-RDP78-05867A000200730028-8

AREA NO. 5811 SUBJECT ALA DIRECT AL9 SUBJECT D2L SUBJECT C2G
 SHANGHAI BREAK WATER AT MOUTH OF WHANGPO RIVER UNIDENTIFIED BRIDGE
 PART OF IR PART PANORAMA. PAN INCLUDES PHOTOS SEE SKETCH CIA #2 LISTED IN REPORT 9-24.

25X1 25X1 25X1A

DATE OF PHOTO	TYPE	QUALITY	CLASS	NO. OF CARDS
7 SEPT 57	4	2	C	4

CLASSIFICATION CONFIDENTIAL Approved For Release 2003/12/01 : CIA-RDP78-05867A000200730028-8

PHOTO NO. 311459 LOT NO. 1-72-2 MAP REFERENCE 367A000200730028-8 LATITUDE 31°N LONGITUDE 102°E

Approved For Release 2003/12/01 : CIA-RDP78-05867A000200730028-8

COUNTRY CHINA SUBJECT KINGSU

AREA NO	SUBJECT	SUBJECT	SUBJECT	SUBJECT	SUBJECT	SUBJECT	SUBJECT	SUBJECT
581L	30L	362	374	ALA	AL9	02L		
SHAN G H A I				B R E A K W A T E R				
A T M O U T H				O F W H A N G P O				
O R I V E R				S I G N A L S T A T I O N				

AND OTHER BLDGS.

PART 2 OF 18 PART PAN. PAN INCLUDES PHOTOS
 A-24 CITED IN REPORT.
 SEE SKETCH CIA 2447

25X1

25X1

25X1A

DATE OF PHOTO	TYPE	QUALITY	CLASS	NO. OF CARDS
7 SEPT 57	4	3	C	16

Approved For Release 2003/12/01 : CIA-RDP78-05867A000200730028-8

CONFIDENTIAL

INDEX NO. 311461 LOT NO. MAP REFERENCE LATITUDE 36 14N 121 28E LONGITUDE

Approved For Release 2003/12/01 : CIA-RDP78-05867A000200730028-8

SUBJECT KIANGLU

AREA NO.	SUBJECT	SUBJECT	SUBJECT	SUBJECT	SUBJECT	SUBJECT	SUBJECT	SUBJECT
	AL1	AL9	57L	36.2	344	02L		

SIGNAL STATION.
 PART 4 OF 18 PART PAN PAN INCLUDED PHOTOS
 1-24 CITED IN REPORT.
 SEE SKETCH {H2}

DATE OF PHOTO	TYPE	QUALITY	CLASS	NO. OF CARDS
7 SEPT 57	4	2	C	16

Approved For Release 2003/12/01 : CIA-RDP78-05867A000200730028-8

PHOTO NO. 311462 LOT NO. L927 MAP REFERENCE LATITUDE 31 14N LONGITUDE 121 28E

COUNTRY CHINA Approved For Release 2003/12/01 : CIA-RDP78-05867A000200730028-8

AREA NO. 551E SUBJECT ALA AL9 D2L SUBJECT SUBJECT SUBJECT SUBJECT SUBJECT SUBJECT

SHANGHAI BR EAK WATER AT MOUTH OF WHANGPO RIVER

PART 5 OF IR PART PAN. PAN INCLUDES PHOTOS R-24 CITED IN REPORT. SEE SKETCH {#2}

25X1 25X1 25X1A

DATE OF PHOTO	TYPE	QUALITY	CLASS	NO. OF CARDS
7 SEPT 57	4	2	C	3

CONFIDENTIAL Approved For Release 2003/12/01 : CIA-RDP78-05867A000200730028-8

PHOTO ANALYSIS REPORT

INDEX NO. 311402 LOT NO. L727 MAP REFERENCE C LATITUDE 31 14N LONGITUDE 151 28E

Approved For Release 2003/12/01 : CIA-RDP78-05867A000200730028-8

COUNTRY CHINA SUBJECT Kiangsu

AREA NO. 581L SUBJECT ALA AL9 ALG D.2L
 SHANGHAI BREAKWATER
 AT MOUTH OF WIHANGPO
 OBIYER. SMALL CRAFT.

PART 6 OF 12 PART PANORAMA. PRN INCLUDES
 PHOTOS 1-24 CITED IN REPORT.
 SEE SKETCH 2-27

25X1		25X1		25X1A	
DATE OF PHOTO	TYPE	QUALITY	CLASS	NO. OF CARDS	BY
7 SEPT 57	4	2	C	4	SP

Approved For Release 2003/12/01 : CIA-RDP78-05867A000200730028-8

PHOTO NO. 311466 LOT NO. L729 MAP REFERENCE C LATITUDE 31 14N LONGITUDE 121 28E

Country CHINA Approved For Release 2003/12/01 : CIA-RDP78-05867A000200730028-8

AREA NO.	SUBJECT	SUBJECT	SUBJECT	SUBJECT	SUBJECT	SUBJECT	SUBJECT	SUBJECT
581L	ALA	AL9	D2L					
SHAN	GHAI			B	R	E	A	K
AT	M	O	U	I	H	O	F	W
O	R	I	V	E	R	W	H	A
								N
								G
								P
								O

PART 2 OF 12 PART PAN. PAN INCLUDES
 PHOTOS T-24 CITED IN REPORT.
 SEE SKETCH #21

DATE OF PHOTO	TYPE	QUALITY	CLASS	NO. OF CARDS
7 SEPT 57	3	2	C	3

Approved For Release 2003/12/01 : CIA-RDP78-05867A000200730028-8

PHOTO ANALYSIS REPORT

PHOTO NO. 311465 | LOT NO. | MAP REFERENCE | LATITUDE 11N | LONGITUDE 121 28 E

COUNTRY CAMBODIA | PROVINCE | Approved For Release 2003/12/01 : CIA-RDP78-05867A000200730028-8

AREA NO.	SUBJECT	SUBJECT	SUBJECT	SUBJECT	SUBJECT	SUBJECT	SUBJECT	SUBJECT
021L	ALA	AL9	02L					
	10			ER	15	K	W	T
	20			15				
	30							
	40							
	45							

PART 8 OF 12 PART PAN. PAN INCLUDES
 PHOTO # 24 CITED IN REPORT.
 SEE ATTACHMENT # 24

25X1 | 25X1 | 25X1A

DATE OF PHOTO	TYPE	QUALITY	CLASS	NO. OF CARDS
1 SEPT 57	P	2	C	3

Approved For Release 2003/12/01 : CIA-RDP78-05867A000200730028-8

PHOTO ANALYSIS REPORT

PHOTO NO. 311466 LOT NO. L727 MAP REFERENCE C LATITUDE 31 14N LONGITUDE 121 25E

Approved For Release 2003/12/01 : CIA-RDP78-05867A000200730028-8

AREA NO	SUBJECT	SUBJECT	SUBJECT	SUBJECT	SUBJECT	SUBJECT	SUBJECT	SUBJECT
581L	ALA	AL9	Q2L					

PART 9 OF 14 PART PAN. PAN INCLUDES
 PHOTOS 19-24 CITED IN REPORT,
 SEE SKETCH CIA 2425

25X1	25X1	25X1A		
DATE OF PHOTO	TYPE	QUANTITY	CLASS	NO. OF CARDS
1 SEPT 51	3	3	C	3

Approved For Release 2003/12/01 : CIA-RDP78-05867A000200730028-8

PHOTO NO. 31146A LOC NO. 727 MAP REFERENCE C LATITUDE 21 14 N LONGITUDE 121 25 E
 Approved For Release 2003/12/01 : CIA-RDP78-05867A000200730028-8

COUNTRY CHINA PROVINCE KIANGSU

AREA NO	SUBJECT	SUBJECT	SUBJECT	SUBJECT	SUBJECT	SUBJECT	SUBJECT	SUBJECT
581L								
	H	A	N	G	H	A	I	B
	A	T	M	O	U	T	H	O
	O	R	I	V	E	R.		

PART II OF II PART PAN, PAN INCLUDED
 PHOTOS 7-24 CITED IN REPORT.
 SEE SKETCH CIA 2427

25X1 25X1 25X1A

DATE OF PHOTO	TYPE	QUANTITY	CLASS	NO. OF CARDS
7 SEPT 57	3	3	C	3

Approved For Release 2003/12/01 : CIA-RDP78-05867A000200730028-8

CONFIDENTIAL PHOTO ANALYSIS REPORT

PHOTO NO. 111450 LOT NO. L727 MAP REFERENCE C LATITUDE 31 14N LONGITUDE 121 28E

Approved For Release 2003/12/01 : CIA-RDP78-05867A000200730028-8

COUNTRY CHINA SUBJECT KINGSU

AREA NO.	SUBJECT	SUBJECT	SUBJECT	SUBJECT	SUBJECT	SUBJECT	SUBJECT	SUBJECT
5816	ALA	AL9	DRL					
SHANGHAI				BREAKEWATER				
AT MOUTH				OF WANGP				
ORIVER								

SEE SKETCH C111 [unclear]

25X1

25X1A

DATE OF PHOTO	TYPE	QUALITY	CLASS	NO. OF CARDS
	4	2	C	3

Approved For Release 2003/12/01 : CIA-RDP78-05867A000200730028-8

CONFIDENTIAL

PHOTO ANALYSIS REPORT

PHOTO NO. 311470 LOT NO. 1227 MAP REFERENCE LATITUDE LONGITUDE

Approved For Release 2003/12/01 : CIA-RDP78-05867A000200730028-8

AREA NO.	SUBJECT	SUBJECT	SUBJECT	SUBJECT	SUBJECT	SUBJECT	SUBJECT	SUBJECT
11L	46A	AL9	022L					
	8		10		15			20
	25		30		15			20
	45		50					

SEE SKETCH CIA {#2}, SKETCH INCLUDES PHOTOS TO

25X1 25X1 25X1A

DATE OF PHOTO	TYPE	QUALITY	CLASS	NO. OF CARDS
9 SEPT 57	3	2	C	3

Approved For Release 2003/12/01 : CIA-RDP78-05867A000200730028-8

PHOTO ANALYSIS REPORT

Approved For Release 2003/12/01 : CIA-RDP78-05867A000200730028-8

ILLEGIB

Approved For Release 2003/12/01 : CIA-RDP78-05867A000200730028-8

PHOTO NO. 581L LOT NO. L727 MAP REFERENCE C LATITUDE 31 14N LONGITUDE 121 38E

Approved For Release 2003/12/01 : CIA-RDP78-05867A000200730028-8

COUNTRY CHINA SUBJECT KIANGSU 1/2

AREA NO.	SUBJECT	SUBJECT	SUBJECT	SUBJECT	SUBJECT	SUBJECT	SUBJECT	SUBJECT
581L	ALA	ALG	D2L					
SHANGHAI				BR	FA	KW	ATER	
AT	M	U	T	H	O	F	WHANG	PO
RIVER							PASSENGER	BOAT

SEE SKETCH CIA 3/1/45

25X1

25X1

25X1A

DATE OF PHOTO	TYPE	QUALITY	CLASS	NO. OF CARDS
	<u>f</u>	<u>2</u>	<u>C</u>	<u>3</u>

Approved For Release 2003/12/01 : CIA-RDP78-05867A000200730028-8

PHOTO ANALYSIS REP

Approved For Release 2003/12/01 : CIA-RDP78-05867A000200730028-8

Next 4 Page(s) In Document Exempt

25X6

Approved For Release 2003/12/01 : CIA-RDP78-05867A000200730028-8

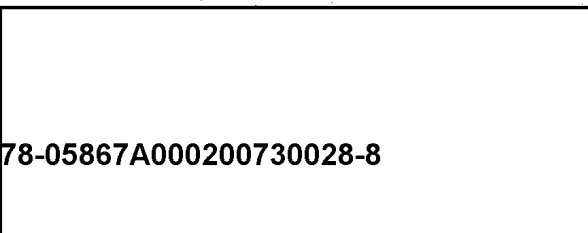
PHOTO NO. 11177 LOT NO. 2/3 APPROX. DATE 135 22 N 66 23 E
 Approved For Release 2003/12/01 : CIA-RDP78-05867A000200730028-8

COUNTRY AFGHANISTAN

AREA NO.	SUBJECT	SUBJECT	SUBJECT	SUBJECT	SUBJECT	SUBJECT	SUBJECT
1	WALF	DOO	DOO				
	PEBHOLA	(N ¹⁰)			TRAIL		IN ²⁰
	TO BAND	- I ²⁰			AMIR		VALLE ⁴⁰
	SHARINE	E ²⁰					

TO MUSLIM SAINT.

25X1A (116)



DATE OF PHOTO	TYPE	QUALITY	CLASS	NO. OF PAGES
AUG 5/4	4	2	3	3

Approved For Release 2003/12/01 : CIA-RDP78-05867A000200730028-8

INDEX NO. 311400 LOT NO. D-213 MAP REFERENCE Nicos LABURE 35-22N 66 33 E LONGITUDE
 Approved For Release 2003/12/01 : CIA-RDP78-05867A000200730028-8

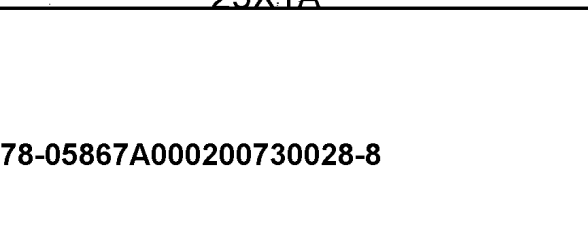
COUNTRY AFGHANISTAN PROVINCE

AREA NO	SUBJECT	SUBJECT	SUBJECT	SUBJECT	SUBJECT	SUBJECT	SUBJECT	SUBJECT
1	U	4	1	D	0			
P	E	C	H	O	L	A	(N ¹⁰ R)	
S	M	U	S	L	I	M	S	A
E	T	R	A	I	L			

W INTO BAND - AMIR VALLEY.

25X1A

BASE OF PHOTO	TYPE	QUALITY	CLASS	NO. OF CARDS
Aug	514	2	3	2



Approved For Release 2003/12/01 : CIA-RDP78-05867A000200730028-8

PHOTO NO. 311402 LOC NO. D-213 MAP REFERENCE ATIS LATITUDE 35 21 N LONGITUDE 66 53 E
 Approved For Release 2003/12/01 : CIA-RDP78-05867A000200730028-8

COUNTRY: AFGHANISTAN
 AREA NO: DUDDG DDD AH4
 SUBJECT: TARKUCH (N¹⁸R) BAND-1-A
 MINK VALLEY Y. FARM DWIE
 ALINIS

25X1A

DATE OF PHOTO	TYPE	QUALITY	CLASS	NO. OF CARDS
AUG 51	4	2	3	3

Approved For Release 2003/12/01 : CIA-RDP78-05867A000200730028-8

Approved For Release 2003/12/01 : CIA-RDP78-05867A000200730028-8

PHOTO NO.	31148	MAP REFERENCE	D-273	LATITUDE	35 20 N	LONGITUDE	66 D7E
COUNTRY	AFGHANISTAN						
AREA NO.	01	SUBJECT	ALFALE	SUBJECT		SUBJECT	
	HAFITAD		GIR		SH		PASS
	HORSES		ON		TRAIL		

25X1A

DATE OF PHOTO	TYPE	QUALITY	CLASS	NO. OF CASE
Aug.	4	2	3	3

Approved For Release 2003/12/01 : CIA-RDP78-05867A000200730028-8

ANALYSIS REPORT

PHOTO NO. **311406** LOT NO. **22** MAP REFERENCE **WCS** LATITUDE **35-11-00** LONGITUDE **66-28-8 D7E**
 Approved For Release 2003/12/01 : CIA-RDP78-05867A000200730028-8

COUNTRY **AFGHANISTAN** PROVINCE

AREA NO.	SUBJECT	SUBJECT	SUBJECT	SUBJECT	SUBJECT	SUBJECT	SUBJECT
0010	ALF	ALF	ALF	ALF	ALF	ALF	ALF
HAF	TAD	10	10	10	10	10	10
HAF	RES	ON	ON	ON	ON	ON	ON
LP	STREAM	10	10	10	10	10	10

25X1A

DATE OF PHOTO	TYPE	QUALITY	CLASS	NO. OF COPIES
Aug. 51	4	2	3	4

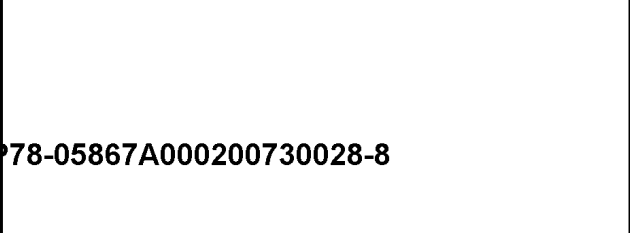
Approved For Release 2003/12/01 : CIA-RDP78-05867A000200730028-8

PHOTO NO. 111407 LOS NO. D-213 MAP REFERENCE NIS LATITUDE 35 20 N LONGITUDE 66 07 E
 Approved For Release 2003/12/01 : CIA-RDP78-05867A000200730028-8

COUNTRY AFGHANISTAN

AREA NO.	SUBJECT	SUBJECT	SUBJECT	SUBJECT	SUBJECT	SUBJECT	SUBJECT
1	CUDD	DD					
	H A F T A D	B I R D	S H	P A S S			
	S U M M I T	M T S	I N	B E			

25X1A



DATE OF PHOTO	TYPE	QUALITY	CLASS	NO. OF COPIES
AUG 51	4	2	3	2

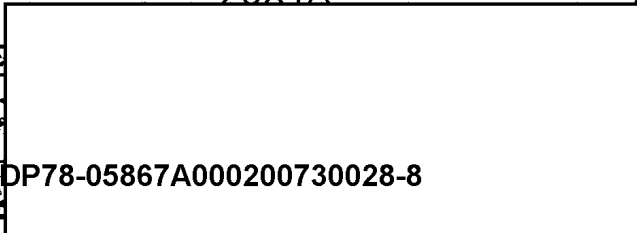
PHOTO NO. 311400 LOT NO. D-212 MAP REFERENCE N13 LATITUDE 35 20 N LONGITUDE 66 07 E

Approved For Release 2003/12/01 : CIA-RDP78-05867A000200730028-8

COUNTRY AFGHANISTAN

AREA NO.	SUBJECT	SUBJECT	SUBJECT	SUBJECT	SUBJECT	SUBJECT	SUBJECT
102	DO	DO					
	H A F T A D	10	10	10	10	10	10
(NR)		20	20	20	20	20	20
S.S.		30	30	30	30	30	30

25X1A



DATE OF PHOTO	TYPE	QUALITY	CLASS	NO. OF C
AUG 51	14	2	3	0

Approved For Release 2003/12/01 : CIA-RDP78-05867A000200730028-8

PHOTO NO. 311400 LOT NO. D-213 MAP REFERENCE NLS LASTITUDE 35 23 N LONGITUDE 66 15 E

Approved For Release 2003/12/01 : CIA-RDP78-05867A000200730028-8

COUNTRY AFGHANISTAN

AREA NO	SUBJECT	SUBJECT	SUBJECT	SUBJECT	SUBJECT	SUBJECT	SUBJECT	SUBJECT
	DURDOR	C3	CD					
ALAIR		AIMAGH		SETTLEM				
ENT	AT	HEAD		OF		KACH		
N	VALLEY							

25X1A

DATE OF PHOTO	TYPE	QUALITY	CLASS	NO. OF CARDS
Aug	51	42	3	3

CLASSIFICATION Approved For Release 2003/12/01 : CIA-RDP78-05867A000200730028-8

PHOTO NO. 31149A Approved For Release 2003/12/04 : CIA-RDP78-05867A000200730028-8

COUNTRY AFGHANISTAN PROVINCE

AREA NO.	SUBJECT	SUBJECT	SUBJECT	SUBJECT	SUBJECT	SUBJECT	SUBJECT	SUBJECT
10	11	12	13	14	15	16	17	18
A	L	K	L	I	N	H	A	A
N	T	S	M	E	N	S	I	T
U	N	D	F	I	R	E	A	R

25X1A

DATE OF PHOTO	TYPE	QUALITY	CLASS	NO. OF CARDS
Aug 57	4	2	3	2

Approved For Release 2003/12/04 : CIA-RDP78-05867A000200730028-8

PHOTO ANALYSIS REF

PHOTO NO. 311493 LOT NO. D-213 MAP REFERENCE N135 LATITUDE 35 33 N. 66 15 E LONGITUDE

Approved For Release 2003/12/01 : CIA-RDP78-05867A000200730028-8

COUNTRY AFGHANISTAN

AREA NO	SUBJECT	SUBJECT	SUBJECT	SUBJECT	SUBJECT	SUBJECT	SUBJECT	SUBJECT
VILL	CEMDAN							
ALAM		ALAM		SE	SETTLE			
ENT	IN	KA			VALLEY			
PART	2				OF 2-PART			
PANORAMA (SEE CIA)								

25X1A

DATE OF PHOTO	TYPE	QUALITY	CLASS	NO. OF COPIES
AUG 51	4	2	3	2

Approved For Release 2003/12/01 : CIA-RDP78-05867A000200730028-8

PHOTO NO. 311496 LOT NO. V-213 MAP REFERENCE N10 LATITUDE 34 56N LONGITUDE 66 28E

Approved For Release 2003/12/01 : CIA-RDP78-05867A000200730028-8

COUNTRY AFGHANISTAN

AREA NO.	SUBJECT	SUBJECT	SUBJECT	SUBJECT	SUBJECT	SUBJECT	SUBJECT	SUBJECT
	DULCE CH2							
MARGH	1	V	10	ULLA	8	E	1	N
AND	-1-	AMIR	30	VALLEY	35			
			30					

25X1A

DATE OF PHOTO	TYPE	QUALITY	CLASS	NO. OF CARDS
AUG 51	H	2	3	2

Approved For Release 2003/12/01 : CIA-RDP78-05867A000200730028-8

WORD NO. 31145 Approved For Release 2003/12/01 : CIA-RDP78-05867A000200730028-8

COUNTRY	AFGHANISTAN						
AREA NO	DU 236	DD	CH2				
	SULI	BAND	-	1	-	AMIR	R
	LVER	RAINS				OF	OLD
	ORT	ON	HILL				F

25X1A

DATE OF PHOTO	TYPE	QUALITY	CLASS	NO. OF CARDS
AUG 65	4	2	3	3

Approved For Release 2003/12/01 : CIA-RDP78-05867A000200730028-8

PHOTO ANALYSIS REPORT

311500

LOT NO.

MAP REFERENCE

LATITUDE

LONGITUDE

COUNTRY

Afghanistan

Approved For Release 2003/12/01 : CIA-RDP78-05867A000200730028-8

AREA NO.

1 U D D D D D

SUBJECT

SUBJECT

SUBJECT

SUBJECT

SUBJECT

SUBJECT

SUBJECT

SUBJECT

SUNLIT
ALLEY

BAND - 1 -

AMIR U

10

20

30

15

25

30

40

25X1A

DATE OF PHOTO

TYPE

QUALITY

CLASS

NO. OF COPS

Aug 51 4 2 3 2

CLASSIFICATION

Approved For Release 2003/12/01 : CIA-RDP78-05867A000200730028-8

PHOTO ANALYSIS REPORT

PHOTO NO. 311582 LOT NO. 0-213 MAP REFERENCE SOURCE 311582 LONGITUDE 37E
 Approved For Release 2003/12/01 : CIA-RDP78-05867A000200730028-8

COUNTRY AFGHANISTAN

AREA NO.	SUBJECT	SUBJECT	SUBJECT	SUBJECT	SUBJECT	SUBJECT	SUBJECT
2444							
1	JAHILL	5		10	RUINS	15	OF
2		20		25		30	ANCIENT
3	NT	35		40	MONASTERY		IN
4	-i-	45		50	INDIAN		BAND
5	MINI				(VALLEY)		
					VALLEY.		

25X1A

DATE OF PHOTO	TYPE	QUALITY	CLASS	NO. OF CARDS
Aug 51	7	2	3	1

Approved For Release 2003/12/01 : CIA-RDP78-05867A000200730028-8

PHOTO NO. 31 Approved For Release 2003/12/01 : CIA-RDP78-05867A000200730028-8

COUNTRY AFGHANISTAN PROVINCE

AREA NO.	SUBJECT	DESCR	SUBJECT	SUBJECT	SUBJECT	SUBJECT	SUBJECT	SUBJECT
①	U44	DO	HAHL					
JAHU	B	A	N	D	-	1	-	A
LLEY	F	R	O	M	R	E	U	I
T	①	O	F	2				

OF ANCIENT MONASTERY
 PART PANORAMA (SEE CIA)

25X1A

DATE OF PHOTO	TYPE	QUANTITY	CLASS	NO. OF CARDS
Aug 51	4	2	3	3

Approved For Release 2003/12/01 : CIA-RDP78-05867A000200730028-8

Approved For Release 2003/12/01 : CIA-RDP78-05867A000200730028-8

INDEX NO.	311505	LOT NO.	DT 212	MAP REFERENCE	SURGE	LATITUDE	34 33 N	LONGITUDE	66 39 E
COUNTRY	AFGHANISTAN								
AREA NO.	1	SUBJECT	W 44	SUBJECT	D. CAHL	SUBJECT	E 42	SUBJECT	99T
	JANU		BAN		-		A		V
	LLEY		FROM		RUINS				PA
	T	2	OF	2					
OF ANCIENT MONASTERY. PART PANORAMA (SEE PIA) SMALL FORT AT CENTER.									

25X1A

DATE OF PHOTO	TYPE	QUALITY	CLASS	NO. OF CARDS
AUG 51	11	2	3	5

Approved For Release 2003/12/01 : CIA-RDP78-05867A000200730028-8

PHOTO NO. 311506 | IOL NO. D-213 | MAP REFERENCE SURGE | LATITUDE 34 53 N | LONGITUDE 66 39 E
 Approved For Release 2003/12/01 : CIA-RDP78-05867A000200730028-8

COUNTRY: AFGHANISTAN

AREA NO.	SUBJECT	SUBJECT	SUBJECT	SUBJECT	SUBJECT	SUBJECT	SUBJECT	SUBJECT
	044	DDG	AHL					
JAHU		RUINS		OF		AN		CLIE
NT		MONASTERY				IN		BLAND
-1-		AMIR		[VAL]				
				VALLEY				

25X1A

DATE OF PHOTO	TYPE	QUALITY	CLASS	NO. OF CARDS
Aug 51	H	2	3	3

Approved For Release 2003/12/01 : CIA-RDP78-05867A000200730028-8
 FORM NO. 174 USE PREVIOUS EDITIONS

PHOTO ANALYSIS REPORT

PHOTO NO. 311597 LOT NO. D-213 MAP REFERENCE Source 34 53 N 66 39 E
 COORDINATES APPROVED FOR RELEASE 2003/12/07 : CIA-RDP78-05867A000200730028-8

COUNTRY AFGHANISTAN

AREA	SUBJECT	SUBJECT	SUBJECT	SUBJECT	SUBJECT	SUBJECT	SUBJECT	SUBJECT
DU	D36	AKF						
JAHUL	(NR)		BAND				AMIR	
RIVER			MAN		FOR		UN	
RIVER								

25X1A

DATE OF PHOTO	TYPE	QUALITY	CLASS	NO. OF CASE
Aug 51	4	2	3	2

APPROVED FOR RELEASE 2003/12/07 : CIA-RDP78-05867A000200730028-8
 PHOTO ANALYSIS REP

PHOTO NO. 311500 LOT NO. D-213 MAP REFERENCE 1:253 440 LATITUDE 34 52 N 66 35 E

Approved For Release 2003/12/01 : CIA-RDP78-05867A000200730028-8

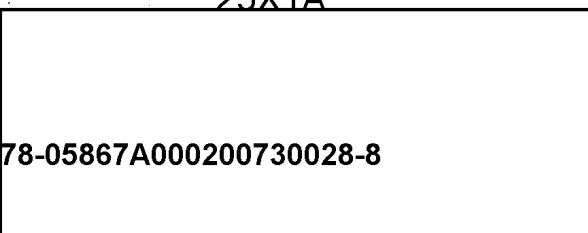
COUNTRY AFGHANISTAN

AREA NO.	SUBJECT	SUBJECT	SUBJECT	SUBJECT	SUBJECT	SUBJECT	SUBJECT	SUBJECT
0 U 206								
CHEHEL	BURJ	(NR)			CAVE			
SIDE	TRAIL				FROM			
KILIBAN								

(34 52 N 66 40 E)

25X1A

DATE OF PHOTO	TYPE	QUANTITY	CLASS	NO. OF CASE
Aug 51	7	2	3	1



Approved For Release 2003/12/01 : CIA-RDP78-05867A000200730028-8

PHOTO NO. **311500** | USE NO. | REFERENCE | LATITUDE | LONGITUDE
 Approved For Release 2003/12/01 : CIA-RDP78-05867A000200730028-8

ORIGIN **AFGHANISTAN** | PROVINCE **L-42**
 AREA NO. **01000000** | SUBJECT **CH4** | SUBJECT **CH2**
CHEMICAL | **B** | **(NR)** | **BAND**
AMIR VALLEY | **TRIVE**
R AT LEFT

APPROACHING RUINS OF ANCIENT
 FORTRESS (CENTER) FROM SOUTHEAST.

25X1A

DATE OF PHOTO	TYPE	QUALITY	CLASS	NO. OF CARDS
A-8	517	2	3	4

Approved For Release 2003/12/01 : CIA-RDP78-05867A000200730028-8

PHOTO NO. 311518
 LOT NO. 2-73 G
 MAP REFERENCE 1253 440
 APPROVED FOR RELEASE 2003/12/01 : CIA-RDP78-05867A000200730028-8
 COORDINATES 36 35 E

COUNTRY AFGHANISTAN

AREA NO.	SUBJECT	SUBJECT	SUBJECT	SUBJECT	SUBJECT	SUBJECT	SUBJECT	SUBJECT
	DU	DD	DD	D36	ALF	CH2	CH4	
	CHEHEL	BURJ	(NR)			BAND		
	-1-	AMIR	VALLEY			RUINS		
	S	OF	FORT					

APPROACHING RUINS OF ANCIENT
 FORTRESS (CENTER) FROM SOUTHEAST.

25X1A

DATE OF PHOTO	TYPE	QUANTITY	CLASS	NO. OF CAR.
AUG 51	H	2	3	6

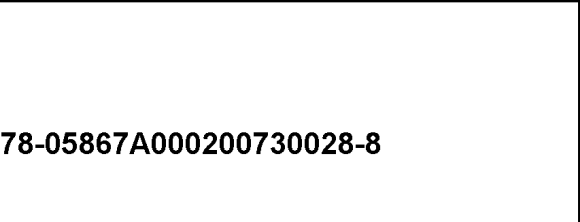


PHOTO NO. **7117** LOT NO. **410** MAP REFERENCE **34 06 N 66 00 E** LONGITUDE
 Approved For Release 2003/12/01 : CIA-RDP78-05867A000200730028-8

COORDINATE	AFGHANISTAN							
AREA NO.	1	2	3	4	5	6	7	8
	U	D	D	D	D	D	D	D
	1	2	3	4	5	6	7	8
	U	D	D	D	D	D	D	D
	1	2	3	4	5	6	7	8
	U	D	D	D	D	D	D	D
	1	2	3	4	5	6	7	8
	U	D	D	D	D	D	D	D

**APPROXIMATE RUINS OF ANCIENT
 FORTRESS (CENTER) FROM SOUTHEAST**

25X1A

DATE OF PHOTO	TYPE	QUALITY	CLASS	NO. OF CASE
August 1	1	2	3	6

Approved For Release 2003/12/01 : CIA-RDP78-05867A000200730028-8

REF ID: 311512 LOT NO: D-213 MAP REFERENCE: 1:253 440 LATITUDE: 34 56 N LONGITUDE: 66 35 E

Approved For Release 2003/12/04 : CIA-RDP78-05867A000200730028-8

COUNTRY: AFGHANISTAN

AREA NO	SUBJECT	SUBJECT	SUBJECT	SUBJECT	SUBJECT	SUBJECT	SUBJECT	SUBJECT
01	DU DQ DDD	ALF CH2	CH4					
	CHEHEL	BURJ	(N/A)				BAND	
	-1-AMIR	VALLEY					TRAI	
	L	OLD	FORT					

APPROACHING RUINS OF ANCIENT
FORTRESS (CENTER) FROM SOUTHEAST.

25X1A

DATE OF PHOTO	FYR	QUALITY	CLASS	NO. OF CARDS
AUG 51	4	2	3	5

Approved For Release 2003/12/04 : CIA-RDP78-05867A000200730028-8

PHOTO NO. 311513 LOT NO. 213 MAP REFERENCE 112-2441 LATTITUDE 34 56 N LONGITUDE 67 20 E
 Approved For Release 2003/12/01 : CIA-RDP78-05867A000200730028-8

COUNTRY	AFGHANISTAN						
AREA NO	SUBJECT	SUBJECT	SUBJECT	SUBJECT	SUBJECT	SUBJECT	SUBJECT
	DILL DARD'D	ALFCH2	CH4				
	ONE HEL	BURST	(UN)			BAND	38
	-1-AM	VALLEY				TRAIL	40
	L	ON	FORT				

APPROACHING RUINS OF ANCIENT
 FORTRESS (CENTER) FROM SOUTHEAST.

25X1A

DATE OF PHOTO	TYPE	QUANTITY	CLASS	NO. OF CARDS
AUG 51	4	2	3	5

Approved For Release 2003/12/01 : CIA-RDP78-05867A000200730028-8

PHOTO NO. 311514 | LOT NO. D-213 | MAP REFERENCE 1:253440 | LATITUDE 34 56 N | LONGITUDE 66 35 E

COUNTRY AFGHANISTAN | Approved For Release 2003/12/01 : CIA-RDP78-05867A000200730028-8

AREA NO.	SUBJECT	SUBJECT	SUBJECT	SUBJECT	SUBJECT	SUBJECT	SUBJECT	SUBJECT
01000	CH2	CH4	ALF	DDQ				
CHEHEL	BURJ	RUINS						
FANCIENT	FORTICES							
N VALLEY								

L BAND-1-AMIR

25X1A

DATE OF PHOTO	TYPE	QUALITY	CLASS	NO. OF CASE
Aug 5-1	4	2	3	

CLASSIFICATION Approved For Release 2003/12/01 : CIA-RDP78-05867A000200730028-8

PHOTO NO. 311516 LOT NO. D-213 MAP REFERENCE 1755, 110 LATITUDE 34 50 N 66 30 E

COUNTRY AF BANGLADESH Approved For Release 2003/12/01 : CIA-RDP78-05867A000200730028-8

AREA NO.	SUBJECT	SUBJECT	SUBJECT	SUBJECT	SUBJECT	SUBJECT	SUBJECT	SUBJECT
64 D36	ALE							
HEHEL	BUR	51	(NR)	15		BAND	20	
-1-	AMIR	R.	VER.	35				40

25X1A

DATE OF PHOTO	TYPE	QUALITY	CLASS	NO. OF COPIES
AUG 51	4	2	3	2

CAPTIONED BY (signature) Approved For Release 2003/12/01 : CIA-RDP78-05867A000200730028-8

PHOTO NO. 311517 LOT NO. D-213 MAP REFERENCE 1:250,000 LATITUDE 34 56 N LONGITUDE 66 35 E
 COORDINATE PROVINCE APPROVED FOR RELEASE 2003/12/01 : CIA-RDP78-05867A000200730028-8

COUNTRY AFGHANISTAN

AREA NO	SUBJECT	SUBJECT	SUBJECT	SUBJECT	SUBJECT	SUBJECT	SUBJECT	SUBJECT
00	D36	C42	C44					
	CHERHEL	BURJ				RUINS		
	FAN	CI	ENT			FORT	RES.	S.
	RIVER		IN	F.B.				
BAND-1-AM10								

25X1A

DATE OF PHOTO	TYPE	QUALITY	CLASS	NO. OF COPIES
AUG 51	4	2	3	3

PHOTO NO. 311510 LOT NO. D-013 MAP REFERENCE VIS LATITUDE 34 46 N LONGITUDE 66 43 E

Approved For Release 2003/12/01 : CIA-RDP78-05867A000200730028-8

AREA NO.	SUBJECT	SUBJECT	SUBJECT	SUBJECT	SUBJECT	SUBJECT	SUBJECT
1	ALL	DI	GLASS	ETC			
2	N	A	T	A	K		
3	S	V	A	L	L	F	R
4	O	F	T	R	E	E	S

25X1A

DATE OF PHOTO	TYPE	QUALITY	CLASS	NO. OF CARDS
AUG 51	1	2	3	3

Approved For Release 2003/12/01 : CIA-RDP78-05867A000200730028-8

PHOTO NO. 311519 | LOT NO. D-213 | MAP REFERENCE NIS | LATITUDE 34 46 N | LONGITUDE 66 43 E

COUNTRY *FE* | PROVINCE *FE* | Approved For Release 2003/12/01 : CIA-RDP78-05867A000200730028-8

AREA NO.	SUBJECT	SUBJECT	SUBJECT	SUBJECT	SUBJECT	SUBJECT	SUBJECT
002	DDQ	007	DDQ	068			
N	A	T	A	K	(N	R)	V
1	L	A	B	E	A	T	F
1	P	F					

VALLEY JUST SOUTH OF NAITAK, LEADING TO BAND-1-ANIR RIVER.

25X1A

DATE OF PHOTO	TYPE	QUALITY	CLASS	NO. OF CARDS
Aug 51	4	2	3	4

CLASSIFICATION *C* | CAPTIONED BY *AK* | Approved For Release 2003/12/01 : CIA-RDP78-05867A000200730028-8

REF NO: 54520 | LOT NO: | MAP REFERENCE: | LATITUDE: 34.46N | LONGITUDE: 66.43E

COUNTRY: | PROVINCE: Approved For Release 2003/12/04 : CIA-RDP78-05867A000200730028-8

AREA NO	SUBJECT	SUBJECT	SUBJECT	SUBJECT	SUBJECT	SUBJECT	SUBJECT	SUBJECT
AF	DID	D36	ALF					
N	A	I	TAK	(NR) ¹⁰	K	O	H	- I - H I ²⁰
A	R	R	A	N	G	E	F	R
T	O	K	I	L	I	G	A	N.
F	2	-	P	A	R	T	P	A
E	E	C	I	A	3	1	1	5
								21

Correction | 1-28-29 | 25X1A

DATE OF PHOTO	TYPE	QUALITY	CLASS	NO. OF CABS
Aug	5	1	4	2
			3	3

CLASSIFICATION: *Confidential* | CAPTIONED BY: | Release 2003/12/04 : CIA-RDP78-05867A000200730028-8

PHOTO NO. 1152A LOT NO. 2/3 MAP REFERENCE _____ LATITUDE _____ LONGITUDE _____
 Approved For Release 2003/12/01 : CIA-RDP78-05867A000200730028-8

COUNTRY AFGHANISTAN
 AREA NO. ILL D (1) D 39
KOH - I - H I S A R R A N & E I R
S M T R A I L
2 PARTS

BETWEEN NAITAK (34 46 N 66 43 E) AND KILIBAN (34 52 N 66 40 E),
 PART 1 OF 3-PART PANORAMA (SEE CIA _____)

25X1A

DATE OF PHOTO	TITLE	QUANTITY	CLASS	NO. OF COPIES
<u>Aug 51</u>	<u>4</u>	<u>2</u>	<u>B</u>	<u>2</u>

Approved For Release 2003/12/01 : CIA-RDP78-05867A000200730028-8

311521

34.46 N : 66.73 E

Approved For Release 2003/12/01 : CIA-RDP78-05867A000200730028-8

PROVINCE *WAC 430-B*

AREA NO	SUBJECT	SUBJECT	SUBJECT	SUBJECT	SUBJECT	SUBJECT	SUBJECT	SUBJECT
<i>AF</i>	<i>DID</i>	<i>D36</i>	<i>ALF</i>					
<i>N A I T A K</i>	<i>(N R)</i>	<i>K O H</i>	<i>- I - H I</i>	<i>10</i>				
<i>A R</i>	<i>R A N G E</i>	<i>F R O M</i>	<i>T R A I L</i>	<i>10</i>				
<i>T O</i>	<i>K I L L I G A N</i>	<i>P A R T</i>	<i>2</i>	<i>0</i>				
<i>F</i>	<i>2 - P A R T</i>	<i>P A N O R A M A</i>	<i>(S E</i>					
<i>E</i>	<i>C I A</i>	<i>3 1 1 5 2 0)</i>						

Correction

1-28-29

25X1A

DATE OF PHOTO	TYPE	QUALITY	CLASS	NO. OF CASES
<i>Aug 5</i>	<i>1</i>	<i>4</i>	<i>2</i>	<i>3</i>

CLASSIFICATION *Confidential* CAPTIONED BY *RP*

Approved For Release 2003/12/01 : CIA-RDP78-05867A000200730028-8

311521

LOT NO. D-213

MAP REFERENCE

LATITUDE

LONGITUDE

COUNTRY: A.F. PROVINCE: Approved For Release 2003/12/01 : CIA-RDP78-05867A000200730028-8

AREA NO	SUBJECT	SUBJECT	SUBJECT	SUBJECT	SUBJECT	SUBJECT	SUBJECT	SUBJECT
	DUDDO	ALFALE						
KOH-1-	HISAR	NUMBER						
OKI	TRAIL	PART	2	OF				
2	PARTS							

BETWEEN NAITAK (34 46 N 66 43 E) AND KILIBAN (34 52 N 66 40 E).
 PART 2 OF 2-PART PANORAMA (SEE PIA)

25X1A

DATE OF PHOTO	TYPE	QUALITY	CLASS	NO. OF CARDS
Aug 51	H	2	3	3

CLASSIFICATION: Approved For Release 2003/12/01 : CIA-RDP78-05867A000200730028-8

REF ID: 711522 | DATE NO. | PROVINCE | 34.46 N | 66.43 E

Approved For Release 2008/12/01 : CIA-RDP78-05867A000200730028-8

AREA NO	SUBJECT	SUBJECT	SUBJECT	SUBJECT	SUBJECT	SUBJECT	SUBJECT	SUBJECT
AF	DID	D36	ALF					
N	A	I	T	A	K	(N	R)	K
A	R	R	A	N	G	E	F	R
B	E	T	W	E	E	N	N	A
I	G	A	N	.				

Correction

1-28-29

25X1A

DATE OF PHOTO	TYPE	QUALITY	CLASS	NO. OF CARDS
Aug 5	1	4	1	3

311500

LOT NO.

MAP REFERENCE

LATITUDE

LONGITUDE

Approved For Release 2003/12/01 : CIA-RDP78-05867A000200730028-8

AFGHANISTAN

AREA NO	SUBJECT	SUBJECT	SUBJECT	SUBJECT	SUBJECT	SUBJECT	SUBJECT	SUBJECT
(U.D.D.)	D39							
KOHISTAN	HIL	HIL	HIL	HIL	HIL	HIL	HIL	HIL
OM	TRAIL	WET						
	KILIBAN							
(34 52 N 66 40 E)								
(34 46 N 66 43 E)								

25X1A

DATE OF PHOTO	TYPE	QUALITY	CLASS	NO. OF CARDS
Aug 51	1	2	3	2

Approved For Release 2003/12/01 : CIA-RDP78-05867A000200730028-8

PHOTO ANALYSIS REF

REF ID: 34523 PROVINCE: 34.46 N ; 66.43 E

COUNTRY: Approved For Release 2003/12/07 : CIA-RDP78-05867A000200730028-8

AREA NO	SUBJECT	SUBJECT	SUBJECT	SUBJECT	SUBJECT	SUBJECT	SUBJECT
<u>AF</u>	<u>DID</u>	<u>D36</u>	<u>ALF</u>				
<u>N</u>	<u>A</u>	<u>I</u>	<u>T</u>	<u>A</u>	<u>K</u>	<u>(N</u>	<u>R)</u>
<u>A</u>	<u>R</u>	<u>R</u>	<u>A</u>	<u>N</u>	<u>G</u>	<u>E</u>	<u>F</u>
<u>B</u>	<u>E</u>	<u>T</u>	<u>W</u>	<u>E</u>	<u>E</u>	<u>N</u>	<u>N</u>
<u>I</u>	<u>G</u>	<u>A</u>	<u>N</u>	<u>A</u>	<u>I</u>	<u>T</u>	<u>A</u>
<u>K</u>	<u>I</u>	<u>L</u>	<u>R</u>	<u>A</u>	<u>I</u>	<u>L</u>	<u>L</u>
<u>I</u>	<u>G</u>	<u>A</u>	<u>N</u>	<u>A</u>	<u>I</u>	<u>T</u>	<u>A</u>
<u>K</u>	<u>I</u>	<u>L</u>	<u>R</u>	<u>A</u>	<u>I</u>	<u>L</u>	<u>L</u>

Correction

1-28-29

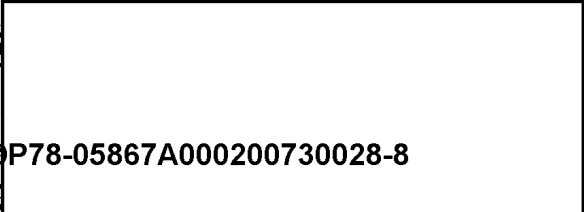
25X1A

DATE OF PHOTO	TYPE	QUALITY	CLASS	NO. OF CARDS
<u>Aug 51</u>	<u>4</u>	<u>1</u>	<u>3</u>	<u>3</u>

APPROVED FOR RELEASE 2003/12/01 : CIA-RDP78-05867A000200730028-8

REF ID: A91152	LOT NO.	MAP REFERENCE	LATITUDE	LONGITUDE
APPROVED FOR RELEASE 2003/12/01 : CIA-RDP78-05867A000200730028-8				
COUNTRY	PROVINCE			
AFGHANISTAN				
AREA NO	SUBJECT	SUBJECT	SUBJECT	SUBJECT
111	1120	D39		
K	O	H	J	R
A	M	T	B	N
K	K	B	N	
(34 46 N 66 43 E)				
(34 50 N 66 40 E)				

25X1A



DATE OF PHOTO	TYPE	QUANTITY	CLASS	NO. OF CAS
Aug 5	A	2	3	2

APPROVED FOR RELEASE 2003/12/01 : CIA-RDP78-05867A000200730028-8

211524

LOT NO.

34.46N - 66.43E

Approved For Release 2003/12/07 : CIA-RDP78-05867A000200730028-8

AREA NO	SUBJECT	SUBJECT	SUBJECT	SUBJECT	SUBJECT	SUBJECT	SUBJECT	SUBJECT
AF	ALF	DID						
N	A	I	T	A	K	M	O	U
I	L	T	O	K	I	L	I	G
\$	L	O	P	E	\$	K	O	H
A	N	G	E	.				

Correction

1-28

25X1A

DATE OF PHOTO	TYPE	QUALITY	CLASS	NO. OF CARDS
Aug 5 1	4	1	3	2

Approved For Release 2003/12/07 : CIA-RDP78-05867A000200730028-8

PHOTO ANALYSIS REPORT

Approved For Release 2003/12/01 : CIA-RDP78-05867A000200730028-8

FORM NO.	311526	LOT NO.	22/3	MAP REFERENCE		LATITUDE		LONGITUDE	
COUNTRY	AFGHANISTAN								
AREA NO.	1	SUBJECT	2	SUBJECT	3	SUBJECT	4	SUBJECT	5
	CLIFF	DIVID							
	MOUNTAIN		10	TRAIL	15	BETWEE	20		
	EN	N	25	AITAK	30	KIKI	PAN	40	
			45						
[34 46 N 66 43 E] [34 52 N 66 40 E]									

25X1A

BASE OF PHOTO	TYPE	QUALITY	CLASS	NO. OF CARDS
Arc	5/1	H 2	3	2

Approved For Release 2003/12/01 : CIA-RDP78-05867A000200730028-8

PHOTO ANALYSIS REP

34.52N : 105.1E

Approved For Release 2003/12/01 : CIA-RDP78-05867A000200730028-8

AREA NO.	COUNTRY	PROVINCE	MAP REFERENCE	LOT NO.	SUBJECT
AF		ALF			
K I L L I G A N I		(N R)			F R E E N V A
L L E Y		\$			K I L L I G A N I
N E		S L O P E \$			K O H - I - H I \$
A R R A N G E					

Correction

1 - 28

25X1A

DATE OF PHOTO	TYPE	QUALITY	CLASS	NO. OF CARDS
Aug 5 1	4	1	3	3

Confidential

Approved For Release 2003/12/01 : CIA-RDP78-05867A000200730028-8

PHOTO ANALYSIS REPORT

PHOTO NO. **11526** LOT NO. [] MAG REFERENCE [] LATITUDE **34.51 N** LONGITUDE **66.39 E**

Approved For Release 2003/12/01 : CIA-RDP78-05867A000200730028-8

AREA NO	SUBJECT	SUBJECT	SUBJECT	SUBJECT	SUBJECT	SUBJECT	SUBJECT	SUBJECT
AF	ALF	DIA	D39					
5	A B Z	10	A K	10	D A R R A	12	F O R G E	20
15	J P A I L	20	T H R U	15	G O R G E	40	NET	
40	O K I L I G A N	30	F R O M					
	N A I T A K .							

Correction

1-28-29

25X1A

DATE OF PHOTO	TYPE	QUALITY	CLASS	NO. OF CARDS
Aug 51	4	1	3	3

Approved For Release 2003/12/01 : CIA-RDP78-05867A000200730028-8

PHOTO ANALYSIS REPORT

PHOTO NO. **311526** LOT NO. **D-213** MAP REFERENCE LATTITUDE LONGITUDE

Approved For Release 2003/12/01 : CIA-RDP78-05867A000200730028-8

COUNTRY **AFGHANISTAN**

AREA NO.	SUBJECT	SUBJECT	SUBJECT	SUBJECT	SUBJECT	SUBJECT	SUBJECT	SUBJECT
00	AF DIA							
T	R	A	I	L	T	H	R	U
A	O	Z	A	K	B	O	R	B
I	B	A	N					

(34 52 N 66 40 E) FROM SOUTH.

25X1A

BASE OF PHOTO	TYPE	QUALITY	CLASS	NO. OF COPS
Au 0	51	4	2	3
				2

Approved For Release 2003/12/01 : CIA-RDP78-05867A000200730028-8

PHOTO NO. 311527 LOT NO. D-213 MAP REFERENCE NIS LATITUDE 35 34 N LONGITUDE 65 47 E

Approved For Release 2003/12/01 : CIA-RDP78-05867A000200730028-8

COUNTRY AFGHANISTAN

AREA NO DU DDR DOT

5	10	15	20
N A R A B H A I T U (N R)	K A R A B		
25	30	35	40
H A I T U V A L L E Y	J U S T I S		
45	50		
O F V I L L A G E			

25X1A

DATE OF PHOTO	TYPE	QUALITY	CLASS	NO. OF CARDS
AUG 51	4	2	3	2

Approved For Release 2003/12/01 : CIA-RDP78-05867A000200730028-8

MICRO NO. **311520** | LOT NO. **D-213** | MAP REFERENCE **VIV** | LATITUDE **35-34N** | LONGITUDE **65-47E**
 Approved For Release 2003/12/01 : CIA-RDP78-05867A000200730028-8

COUNTRY **AFGHANISTAN**

AREA NO	SUBJECT	SUBJECT	SUBJECT	SUBJECT	SUBJECT	SUBJECT	SUBJECT
	(D) D36	D1DQ					
	KANDAHAR	HAITU	(N)	KA	AREA	10	20
	HAITU	WALLEY	FR	ON	15	25	40
	D FORT						

CALLED TAKHSHARAH.

25X1A

SERIAL NO	TYPE	QUANTITY	CASES	NO. OF CARDS
Aug 51	4	2	3	2

Approved For Release 2003/12/01 : CIA-RDP78-05867A000200730028-8
CONF

PHOTO NO. 311529 LOT NO. P-213 MAP REFERENCE NIS LATITUDE 35 31 N LONGITUDE 65 17 E

Approved For Release 2003/12/01 : CIA-RDP78-05867A000200730028-8

COUNTRY AFGHANISTAN

SEA NO	SUBJECT	SUBJECT	SUBJECT	SUBJECT	SUBJECT	SUBJECT	SUBJECT	SUBJECT
	00042	00100	00100					
	KARACHAITU	(NN)				FORET		
	OF	TAKHSHARAH				ON		TOP
	OF	PINNACLE.						

COMMANDS CROSSROADS LEADING TO
KARAH-I-SHARIB AND CHIKAS.

25X1A

DATE OF PHOTO	TYPE	QUALITY	CLASS	NO. OF CARDS
AUG 51	H	2	3	3

Approved For Release 2003/12/01 : CIA-RDP78-05867A000200730028-8

PHOTO NO. 311571
 LOT NO. 15
 MAP REFERENCE N 15
 LATITUDE 35 30 N
 LONGITUDE 65 41 E
 Approved For Release 2003/12/04 : CIA-RDP78-05867A000200730028-8

COUNTRY AFGHANISTAN

AREA NO.	SUBJECT	SUBJECT	SUBJECT	SUBJECT	SUBJECT	SUBJECT	SUBJECT
	DURAND	DO	ETC				
	KHAMI	DEH	(N)		YMAN		
	BOYS	HARVEST			N	WHEA	

LOOKING DOWN TOWARD PLAIN OF
GURZIWAN AND QALA SHAHAR.

25X1A

DATE OF PHOTO	TYPE	QUALITY	CLASS	NO. OF CASE
Aug 51	1	2	3	3

REPORT NO. 311532 LOT NO. MAP REFERENCE LATITUDE 35.06 N LONGITUDE 66.21 E

COUNTRY AF PROVINCE AF Approved For Release 2003/12/01 : CIA-RDP78-05867A000200730028-8

AREA NO	SUBJECT	SUBJECT	SUBJECT	SUBJECT	SUBJECT	SUBJECT	SUBJECT	SUBJECT
<u>AF</u>	<u>DIQ</u>	<u>ALF</u>	<u>DID</u>					
<u>\$</u>	<u>U</u>	<u>L</u>	<u>1</u>	<u>J</u>	<u>(NR)</u>	<u>10</u>	<u>T</u>	<u>R</u>
	<u>A</u>	<u>N</u>	<u>D</u>	<u>-</u>	<u>1</u>	<u>-</u>	<u>A</u>	<u>M</u>
	<u>T</u>	<u>O</u>	<u>1</u>	<u>\$</u>	<u>F</u>	<u>I</u>	<u>M</u>	<u>A</u>
							<u>I</u>	<u>D</u>
							<u>A</u>	<u>N</u>
							<u>15</u>	<u>T</u>
							<u>V</u>	<u>A</u>
							<u>L</u>	<u>L</u>
							<u>E</u>	<u>Y</u>
							<u>10</u>	<u>T</u>
							<u>H</u>	<u>R</u>
							<u>U</u>	

Correction

1-28

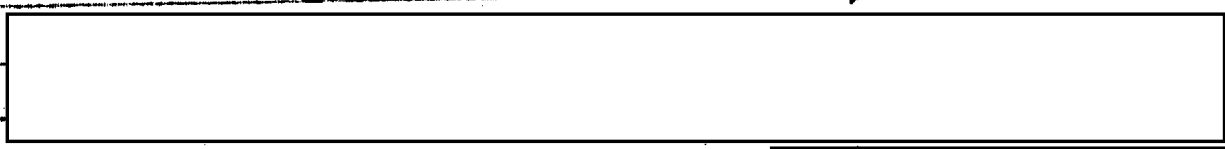
25X1A

DATE OF PHOTO	TYPE	QUALITY	CLASS	NO. OF CARDS
<u>Aug 5 1</u>	<u>4</u>	<u>1</u>	<u>3</u>	<u>3</u>

CLASSIFICATION Confidential CAPTIONED BY PR Approved For Release 2003/12/01 : CIA-RDP78-05867A000200730028-8

311503 Approved For Release 2003/12/01 : CIA-RDP78-05867A000200730028-8

LOT NO.	MAP REFERENCE	LATITUDE	LONGITUDE
311503			
COUNTRY	PROVINCE		
AFGHANISTAN			
AREA NO.	SUBJECT	SUBJECT	SUBJECT
DUDDO	ALF	D36	
DAND	10	VALLEY	20
ETWEEN	30	ISFI	40
MAIDAN	50		
			25X1A
		(35 06 N 68 21 E)	
25X1		(35 16 N 68 12 E)	



DATE OF PHOTO	TYPE	QUANTITY	CLASS	NO. OF CARDS
Aug 5	4	2	3	3

Approved For Release 2003/12/01 : CIA-RDP78-05867A000200730028-8

PHOTO NO. 311533 LOT NO. MAP REFERENCE LATITUDE 35.06N LONGITUDE 66.21E

COUNTRY Approved For Release 2003/12/01 : CIA-RDP78-05867A000200730028-8
WAC 430-B

AREA NO	SUBJECT	SUBJECT	SUBJECT	SUBJECT	SUBJECT	SUBJECT	SUBJECT	SUBJECT	SUBJECT							
AF	ALF	D17														
S	U	L	J	(N R)	¹⁰	T	R	A	I	L	A	L	O	N	²⁰	
G	\$	T	E	E	P	L	E	F	T	B	A	N	K	O	F	⁴⁰
B	A	N	D	-	I	-	A	M	I	R	R	I	V	E	R	D
E	T	W	E	E	N	\$	U	L	J	&	I	\$	F	I		
M	A	I	D	A	N	.										

Correction

1-28

25X1A

DATE OF PHOTO	TYPE	QUALITY	CLASS	NO. OF COPIES
AUG 5 1	4	1	3	2

Approved For Release 2003/12/01 : CIA-RDP78-05867A000200730028-8

Confidential

PHOTO ANALYSIS REPORT

APPROVED FOR RELEASE 2008/12/01 : CIA-RDP78-05867A000200730028-8

COUNTRY: AFGHANISTAN

AREA NO	SUBJECT	SUBJECT	SUBJECT	SUBJECT	SUBJECT	SUBJECT	SUBJECT	SUBJECT
	DUAL	DOT						

TRAIL ALONG SITE
 FT BANK OF BAND - I - AM
 IR RIVER

BETWEEN JULIO (35° 06' N 66° 21' E)
 AND USFI MAIDAN (35° 16' N 66° 12' E).

25X1A

DATE OF PHOTO	TYPE	QUALITY	CLASS	NO. OF CARD
AUG 5-1	1	2	3	2

APPROVED FOR RELEASE 2008/12/01 : CIA-RDP78-05867A000200730028-8

PHOTO NO. 311534
 LOT NO. D-213 NIS
 MAP REFERENCE
 LATITUDE 35 12 N
 LONGITUDE 66 14 E
 Approved For Release 2003/12/01 : CIA-RDP78-05867A000200730028-8

COUNTRY AFGHANISTAN

AREA NO.	SUBJECT	SUBJECT	SUBJECT	SUBJECT	SUBJECT	SUBJECT	SUBJECT
DU 039	AKT ALE						
	5	10	15	20	25	30	35
DAHAN	-	1 -	KIA SHAN			BRID	
QEA	35	40	45	50			

LEFT BANK TRIBUTARY OF BAND-1-AMIR RIVER.

25X1A

DATE OF PHOTO	TYPE	QUALITY	CLASS	NO. OF CARDS
AUG 51	1	2	3	3
REF				

Approved For Release 2003/12/01 : CIA-RDP78-05867A000200730028-8

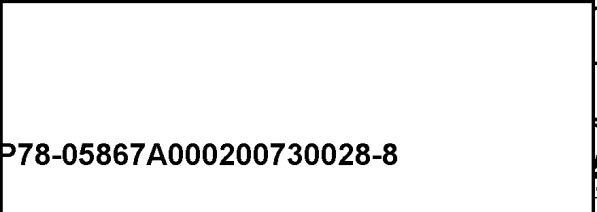
WORD NO. 311525 (LOT NO. 2101) MAP REFERENCE 35 10 N 66 14 E
 Approved For Release 2003/12/01 : CIA-RDP78-05867A000200730028-8

COUNTRY	AFGHANISTAN						
AREA NO.	SUBJECT	SUBJECT	SUBJECT	SUBJECT	SUBJECT	SUBJECT	SUBJECT
	DUD37	AKH ALE					
	D A H W N	1	K I A	S H A N	15	P R I D	20
	G E	A M R O S	30	S T R E A M	35		40
			30				

LEFT BANK TRIBUTARY OF BAND-1-AMIR RIVER.

25X1A

DATE OF PHOTO	TYPE	QUALITY	CLASS	NO. OF CAPS
Aug 51	1	2	3	3



Approved For Release 2003/12/01 : CIA-RDP78-05867A000200730028-8

MICRO NO. **311536** | LOT NO. **2213** | MAP REFERENCE **N/S** | LATITUDE | LONGITUDE
 Approved For Release 2003/12/01 : CIA-RDP78-05867A000200730028-8

COUNTRY	AFGHANISTAN						
AREA NO.	DLU D36	DALE	D43				
	DAHAN	-1-	KASHAN	18		MEAD	22
	OW	BESIDE	BAND	18	-1-	AM	40
	R	RIVER		30			

25X1A

DATE OF PHOTO	TYPE	QUALITY	CLASS	NO. OF CARDS
Aug 11	4	2	3	3

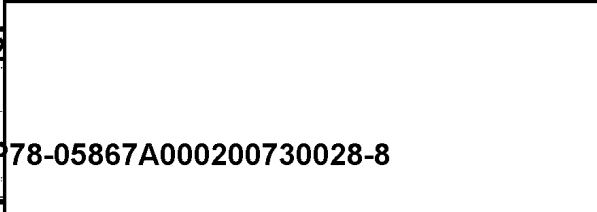
Approved For Release 2003/12/01 : CIA-RDP78-05867A000200730028-8
CONF

PHOTO NO. 311587
 LIST NO. 27112
 MAP REFERENCE N/S
 LATITUDE 35 16 N
 LONGITUDE 66 12 E
 Approved For Release 2003/12/01 : CIA-RDP78-05867A000200730028-8

COUNTRY AFGHANISTAN
 PROVINCE

AREA NO.	SUBJECT	SUBJECT	SUBJECT	SUBJECT	SUBJECT	SUBJECT	SUBJECT	SUBJECT
	DUC	3C	DDQ					
	1	MAIND	10	AN		12	NOHAD	20
	13	ENTIS	20	NARROW		25	VALLE	40
	45		30					

25X1A



DATE OF PHOTO	TYPE	QUALITY	CLASS	NO. OF CARDS
Aug 56	4	2	3	2
CONF				

Approved For Release 2003/12/01 : CIA-RDP78-05867A000200730028-8

PHOTO NO. 311520 LOT NO. D-2003 MAP REFERENCE APPROVED FOR RELEASE 2003/12/01 : CIA-RDP78-05867A000200730028-8 LATITUDE 34° 24' 55" N LONGITUDE 69° 29' E

COUNTRY AFGHANISTAN PROVINCE

AREA NO	SUBJECT	SUBJECT	SUBJECT	SUBJECT	SUBJECT	SUBJECT	SUBJECT	SUBJECT
	DU	CH	ALE					
SAR-I-CHASHMA						VIC		
E HOUSES						CAMEL		
KAN)								

25X1A

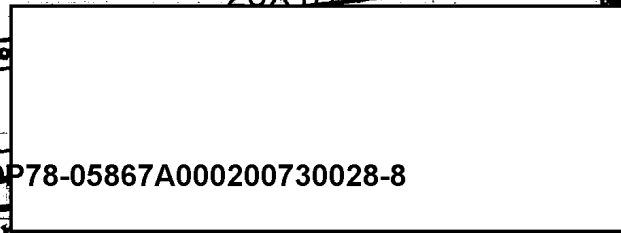
DATE OF PHOTO	TYPE	QUALITY	CLASS	NO. OF CARDS
AUG 1	4	2	3	3
CONF				

APPROVED FOR RELEASE 2003/12/01 : CIA-RDP78-05867A000200730028-8

Approved For Release 2003/12/04 : CIA-RDP78-05867A000200730028-8

WORD NO.	311540	MAP REFERENCE		LATITUDE	34 7 N 67 21 E
COUNTRY	AFGHANISTAN				
AREA NO.	DUR	SUBJECT	CHAS	SUBJECT	11A
	1				20
	15				60
	48				
LARGE AREA ACROSS RIVER FROM NEW VILLAGE					

25X1A



Approved For Release 2003/12/04 : CIA-RDP78-05867A000200730028-8

DATE OF PHOTO	TYPE	QUALITY	CLASS	NO. OF CARDS
AUG 68	4	2	3	1

PHOTO ANALYSIS REPORT

PHOTO NO. 31154 Approved For Release 2003/12/01 : CIA-RDP78-05867A000200730028-8

LOT NO. 253

MAP REFERENCE

LATITUDE

COORDINATES

COUNTRY AFGHANISTAN

PROVINCE

AREA NO.	SUBJECT	SUBJECT	SUBJECT	SUBJECT	SUBJECT	SUBJECT	SUBJECT
	DUNDOG C-42	JAI					
	BENSUD						
	PLACE						
	MENT						
RESIDENCE OF DISTRICT GOVERNOR							
OF BENSUD (LOCATED EAST OF HELMAND							
RIVER CROSSING ON KABUL-PANJAO ROAD).							

25X1A

BASE OF PHOTO	TYPE	QUALITY	CLASS	NO. OF CARDS
Aug	1	2	3	2
CONF				

Approved For Release 2003/12/01 : CIA-RDP78-05867A000200730028-8

PHOTO ANALYSIS REP

PHOTO NO. 3115 LOT NO. 23 MAP REFERENCE COORDINATES APPROVED FOR RELEASE 2003/12/01 : CIA-RDP78-05867A000200730028-8

COUNTRY	AFGHANISTAN						
AREA NO.	SUBJECT	SUBJECT	SUBJECT	SUBJECT	SUBJECT	SUBJECT	SUBJECT
	DUAKV	DD	ETC				
	BENSUD			AFGHAN		TRIBE	
	SMEN	AT		EDGE		OF	HILL
	AGE	[ROAD]					

(LOCATED EAST OF HELMAND RIVER CROSSING ON KABUL-PANJAO ROAD)

25X1A

DATE OF PHOTO	TYPE	QUALITY	CLASS	NO. OF CASES
Aug 5/1	4	2	3	3
CONF				

APPROVED FOR RELEASE 2003/12/01 : CIA-RDP78-05867A000200730028-8

Approved For Release 2003/12/01 : CIA-RDP78-05867A000200730028-8

FILE NO.	317559	LOT NO.		MAP REFERENCE		LATITUDE	COORDINATES	LONGITUDE	
COUNTRY	AFGHANISTAN								
AREA NO.	DUJIP 251								
	SUBJECT	SUBJECT	SUBJECT	SUBJECT	SUBJECT	SUBJECT	SUBJECT	SUBJECT	SUBJECT
	BIENSIN		T ¹⁰ AJIK			15	SOLIDICE		20
	R,	25	PERSIAN			35	SPEAKING		40

ASSIGNED TO GOVERNOR'S QUARTERS.

25X1A

DATE OF PHOTO	TYPE	QUALITY	CLASS	NO. OF CARDS
Aug 5/1	1	2	3	2
CLASSIFICATION	SECRET			

Approved For Release 2003/12/01 : CIA-RDP78-05867A000200730028-8

PHOTO ANALYSIS REPORT