

CONFIDENTIAL

EB180

1 November 1960

MEMORANDUM FOR THE RECORD

SUBJECT: Evaluation of Sawed-Off Shotguns

1. [redacted], dated 19 October 1960, was a cable requesting information on sawed off shotguns. Because no information was available, [redacted] and I made arrangements to use the FBI's Quantico range to evaluate sawed off shotguns. We were assisted by [redacted] of the FBI. 25X1
25X1
25X1
25X1

2. We obtained two 12 gauge sawed off shotguns from [redacted], OL/SD/ORD (Fig. 1 & 2). These guns weighed 3-3/4 pounds and were 17" overall length. [redacted] provided a standard 12 gauge shotgun (Fig. 3) which we evaluated by shortening the barrel in increments until it was only 12" long (Fig. 4). Shot patterns were made at 10, 20, 30, and 40 yards on the range shown in Fig. 5. No. 6 and 00 buckshot express loads were used at each range. Figs. 6 and 7 show the patterns at 5 and 10 yards using the Remington with the barrel cut to 12". 25X1
25X1

3. The following tables give the firing results:

Extreme Spread in Inches for Remington Model 58 Using 00 Buckshot

Range (yds)	30 ¹	Barrel Length (in.)						
		26	22	18	16	14	12	
10	5 ¹ / ₄	8	10	8 ¹ / ₂	9	10 ¹ / ₂	8, 8 ¹ / ₂ , 13	
20	10	27	18, 19 ²	16	16	16	24, 27	
30	--	24	25	36	21, 29, 34 ³	27 ⁴	32 ³	
40	33	--	--	--	--	--	--	

¹Full choke barrel

²More than one entry indicates more than one shot

³Only 8 of 9 buckshot hit the target

⁴Only 7 of 9 buckshot hit the target

Extreme Spread in Inches for Remington Model 58 Using No. 6 Shot

Range (yds)	30 ¹	Barrel Length (in)						
		26	22	18	16	14	12	
10	7	20	12, 15	15	13	13	14	
20	16	27	26	24	26	23	24	
30	--	36	36	34	36	36	36	
40	Full target	--	--					

25X1

¹Full choke barrel

CONFIDENTIAL

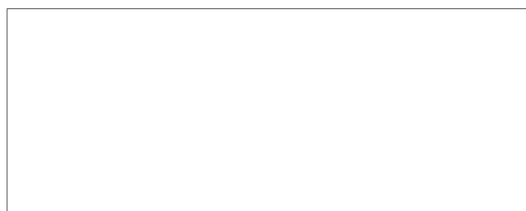
Extreme Spread for Winchester Model 37 Sawed Off Shotgun

<u>00 Buckshot</u>		<u>No. 6 Shot</u>	
<u>Range (yds)</u>	<u>Extreme Spread (in.)</u>	<u>Range (yds)</u>	<u>Extreme Spread (in.)</u>
10	10	10	18
20	16	20	24
40	31 ¹	40	Full Target

¹ Five of nine buckshot hit target

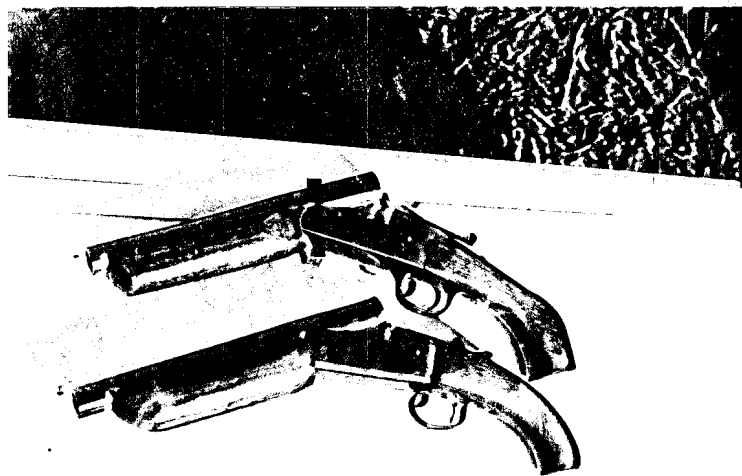
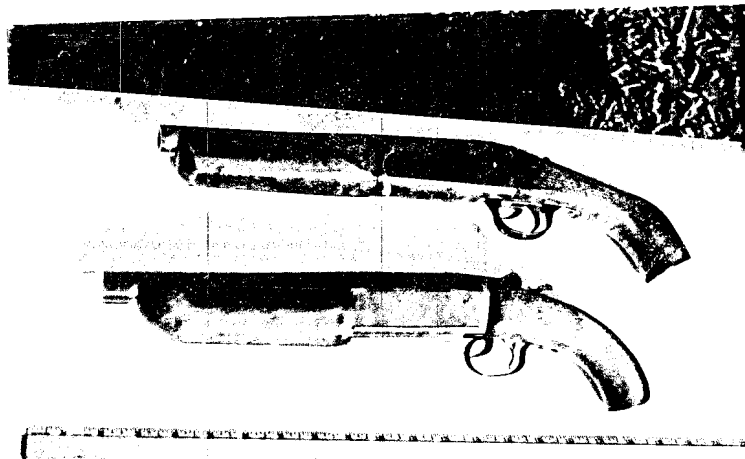
4. Positive conclusions cannot be made from tests as limited as these; however, three observations were evident:

- a. The Winchester sawed off shotgun is so lightweight that recoil could be a problem. A firm two-handed grip is required to hold the weapon.
- b. Once the choke has been removed from a barrel, the length does not greatly affect the pattern size. Thus, a very short barrel will not necessarily give a larger pattern than a full length barrel, and it does give more muzzle flash and recoil.
- c. The effective range of a sawed off shotgun is 30 yards or less. Using 00 buckshot, the chances of fatally wounding a man at ranges greater than these is slim.



25X1

SECRET



Figs. 1 & 2 Winchester Model 37 (bottom) and (top). Both have 10" barrel, weigh 3-3/4 pounds, and are 12 gauge.

SECRET

SECRET

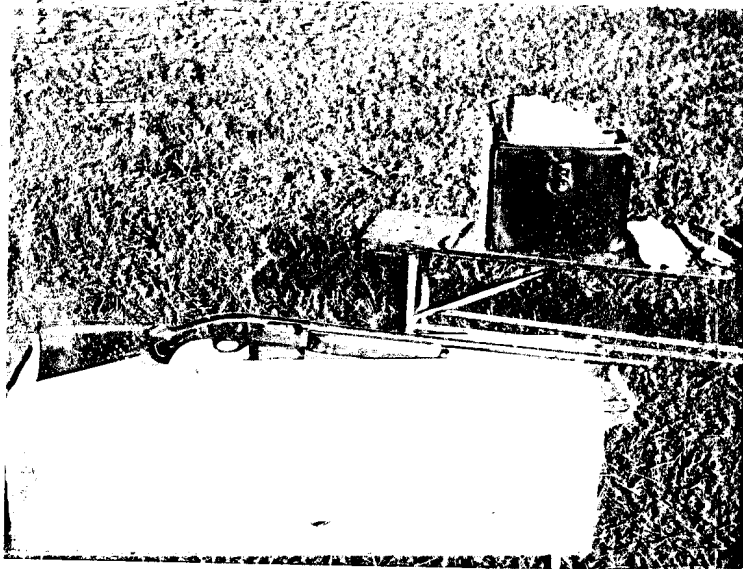


Fig. 3 Remington Model 58 12 gauge shotgun with 30" full choke barrel.



Fig. 4 Remington Model 58 shotgun with barrel cut to 12 inches.

SECRET

SECRET

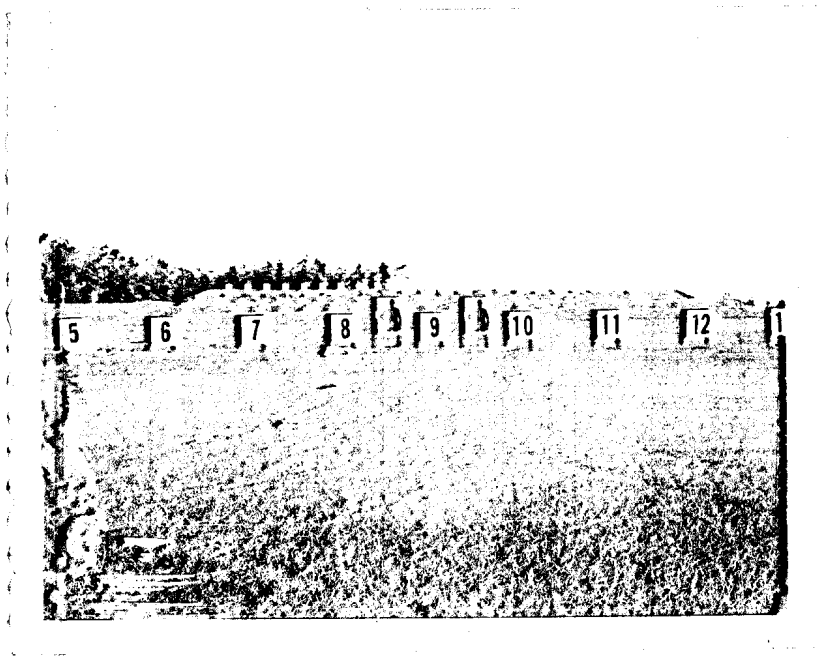


Fig. 5 FBI rifle range at Quantico, Virginia

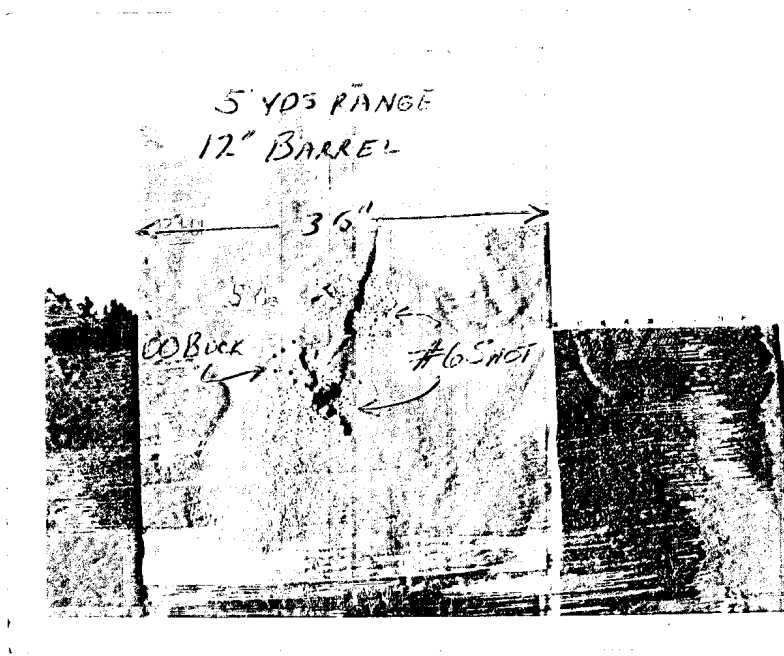


Fig. 6. Five yard pattern with Remington Model 58 with 12" barrel.

SECRET

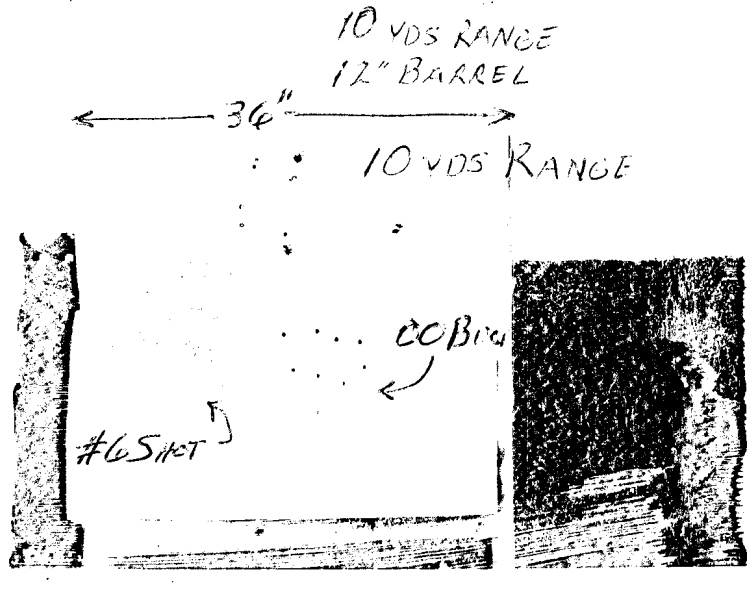
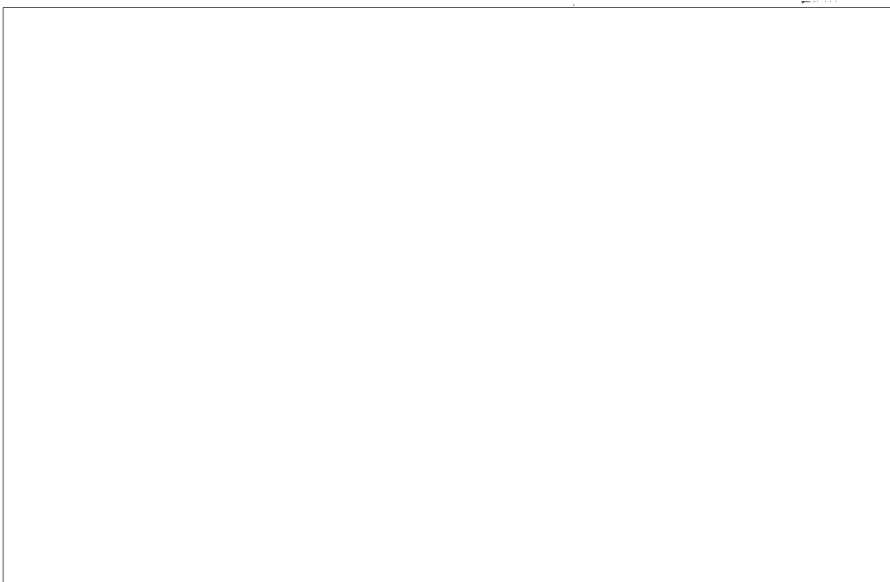


Fig. 7 Ten yard pattern with Remington Model 58 with 12 " barrel.



25X1

SECRET

00 BUCKSHOT

REMINGTON MODEL 58

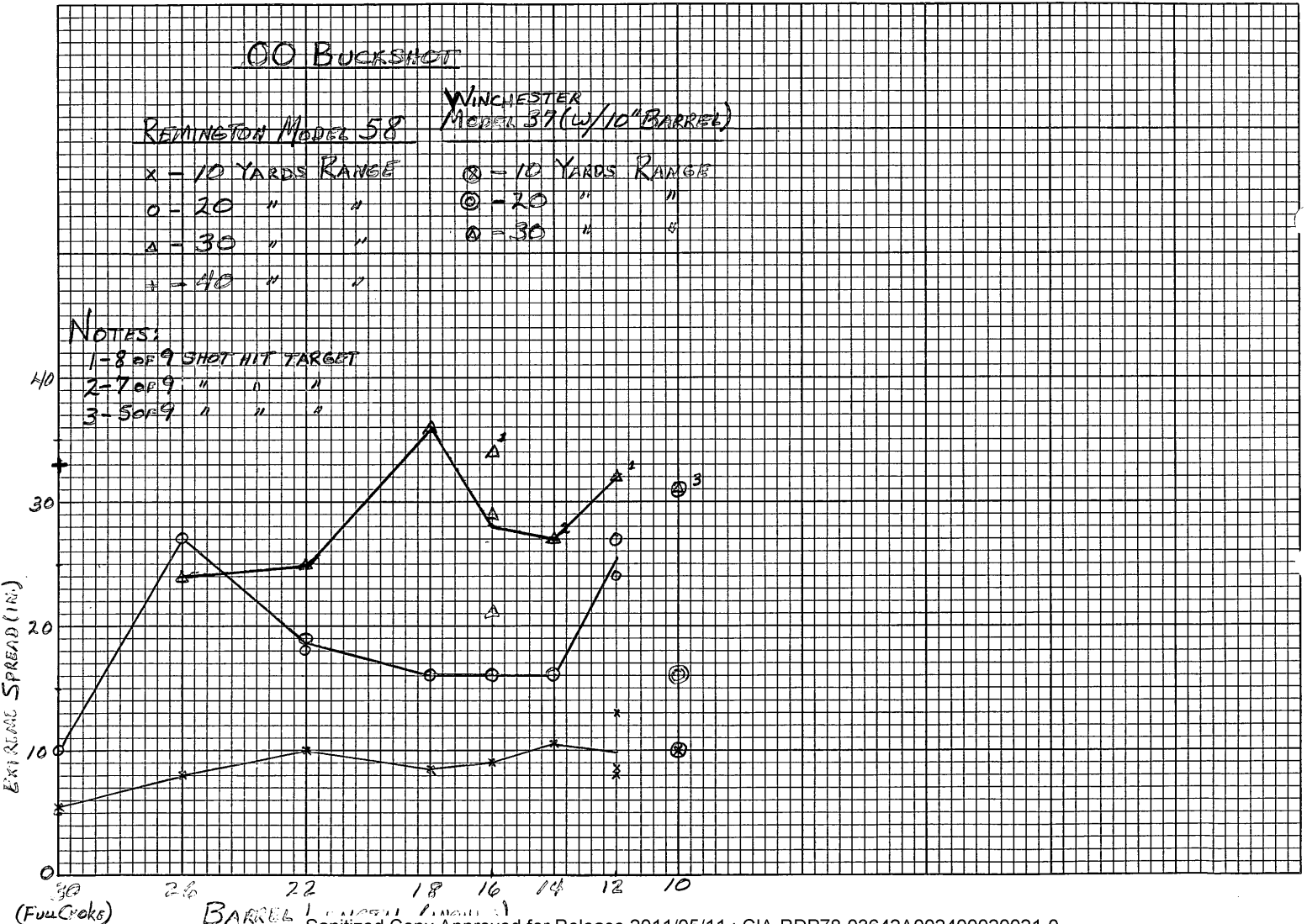
WINCHESTER
MODEL 37 (w/10" BARREL)

x - 10 YARDS RANGE
o - 20 " " "
Δ - 30 " " "
+ - 40 " " "

⊗ - 10 YARDS RANGE
⊙ - 20 " " "
⊕ - 30 " " "

NOTES:

1-8 OF 9 SHOT HIT TARGET
2-7 OF 9 " " "
3-5 OF 9 " " "

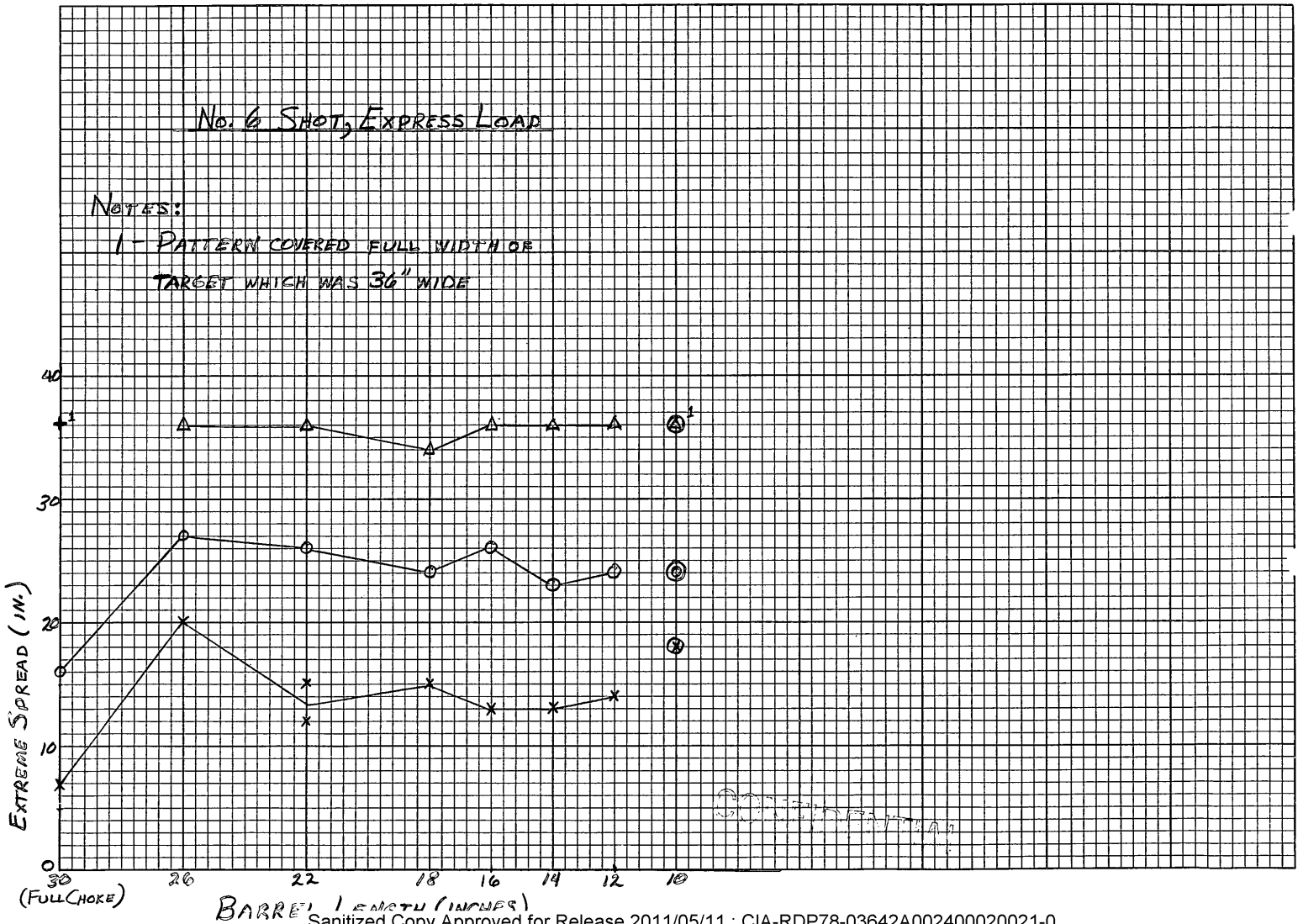


CONFIDENTIAL

No. 6 SHOT, EXPRESS LOAD

NOTES:

1 - PATTERN COVERED FULL WIDTH OF TARGET WHICH WAS 36" WIDE



BARREL LENGTH (INCHES)