

**CONFIDENTIAL**

~~SECRET~~

22 May 1956

Memorandum for the Record

Subject: Burial of Experimental Test Caches [redacted] 25X1

1. AREA: [redacted] 25X1

2. DATE: 3 April 1956.

3. NUMBER OF CACHES: Four units consisting of four packages each.

4. METHOD OF CACHING: All four units were burial caches. Soil, sand and clay.

5. PACKAGES: Each cache consisted of one stainless steel burial box, one Japanese five gallon can, two sections of bamboo, and one bare plastic dipped package.

6. DURATION: The caches will be exhumed at six months intervals to be checked as to their useability, and the protection afforded by the different method of packaging used.

7. [redacted] 25X1

Caches are [redacted] about 120 yards from the river. This area is mountainous jungle. The river will be within 20 yards of the caches during the rainy season. There are all types of ants in this area as well as other jungle inhabitants. During the rainy season there will be an average of about three to four hours of hard rain out of every 24 hours. 25X1

There are two ways to get into the area, one by walking which will take a minimum of 5 days from Hua Hin, one by helicopter which takes about 35 to 40 minutes. This area will be maintained as a camp as long as we are in the country under the present set up. [redacted] 25X1

[redacted] 25X1

[redacted] 25X1

**CONFIDENTIAL**

~~SECRET~~

CONFIDENTIAL

~~SECRET~~

Caches were made in front of flag pole perpendicular to the Troop Barracks toward the river. First cache is approximately 33 feet from flag pole on a azimuth of 55° others are in line with first caches at about 2 feet intervals. From large tree near training area first cache is approximately 41 feet on a azimuth of 106°. From large triple trunk tree approximately 36 feet on a azimuth of 135°. Check sketches and photos.

8. CONTENTS:

Stainless Can

- 1. Ammo 9mm . . . . . 1 Pack (3 rds)
- 2. Ammo 30 cal . . . . . 1 Pack (5 rds)
- 3. Flare . . . . . 1 Can
- 4. Caps . . . . . 1 Pack (2 each)
- 5. Matches . . . . . 1 Box
- 6. Time Pencils . . . . . 1 Pack (3 each)
- 7. Knife, Wrist . . . . . 1 each

Brown Paper

Japanese 5 Gallon Can

- 1. Gun . . . . . HR45 . . . . . 1 Each
- 2. Ammo 9mm. . . . . HR45 . . . . . 1 Pack
- 3. Flare . . . . . HR45 . . . . . 1 Each
- 4. Ammo, 30 cal . . . . . HR45 . . . . . 1 Pack
- 5. Bayonet . . . . . Rubber . . . . . 1 Each
- 6. Caps (can) . . . . . HR45 . . . . . 1 Can
- 7. Matches . . . . . HR45 . . . . . 1 Box
- 8. Time Pencils . . . . . Rubber . . . . . 1 Pack
- 9. Film, 35mm . . . . . HR49 . . . . . 1 Box
- 10. Paper . . . . . HR49 . . . . . 1 Pack

Bamboo Section

- 1. Watches . . . . . HR45 . . . . . 1 Each
- 2. Ammo, 9mm . . . . . HR45 . . . . . 1 Pack
- 3. Ammo, 30 cal . . . . . Rubber . . . . . 1 Pack
- 4. Socks . . . . . HR49 . . . . . 1 Pack
- 5. Matches . . . . . Rubber . . . . . 1 Box
- 6. APC . . . . . HR49 . . . . . 1 Box
- 7. Paper . . . . . Rubber . . . . . 1 Pack

Bare in Plastic

CONFIDENTIAL

~~SECRET~~

**CONFIDENTIAL**



9. REMARKS:

This area should be the most severe of the areas thus far used. The climate is tropical jungle. Sections of bamboo were used as a local type container. It is suggested that if large supply caches are to be made, that the possibility of using caves be explored. This either natural or man-made. The local containers that were seen, such as the five gallon square can, pottery and glass jars, and the large water crocks could be used as local containers for burials. The crockery and glass probably being the best.

Old mortar ammo cans could be used as a burial container but would suggest that some interior packaging be used on the items.

**CONFIDENTIAL**



**Page Denied**

Next 1 Page(s) In Document Denied

SECRET  
DL  
Sanitized Copy Approved for Release 2011/09/26 : CIA-RDP78-03639A001600050002-1

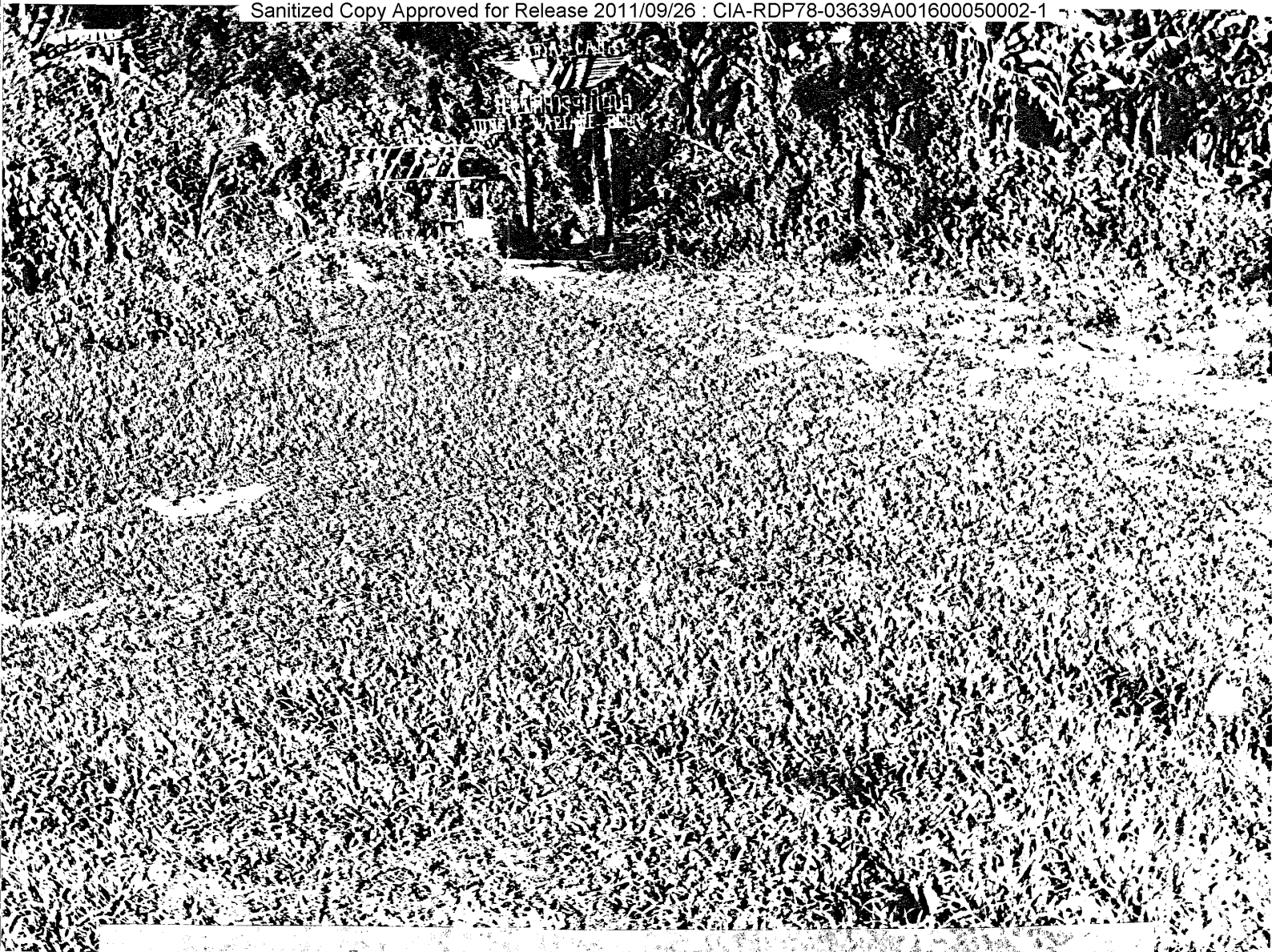
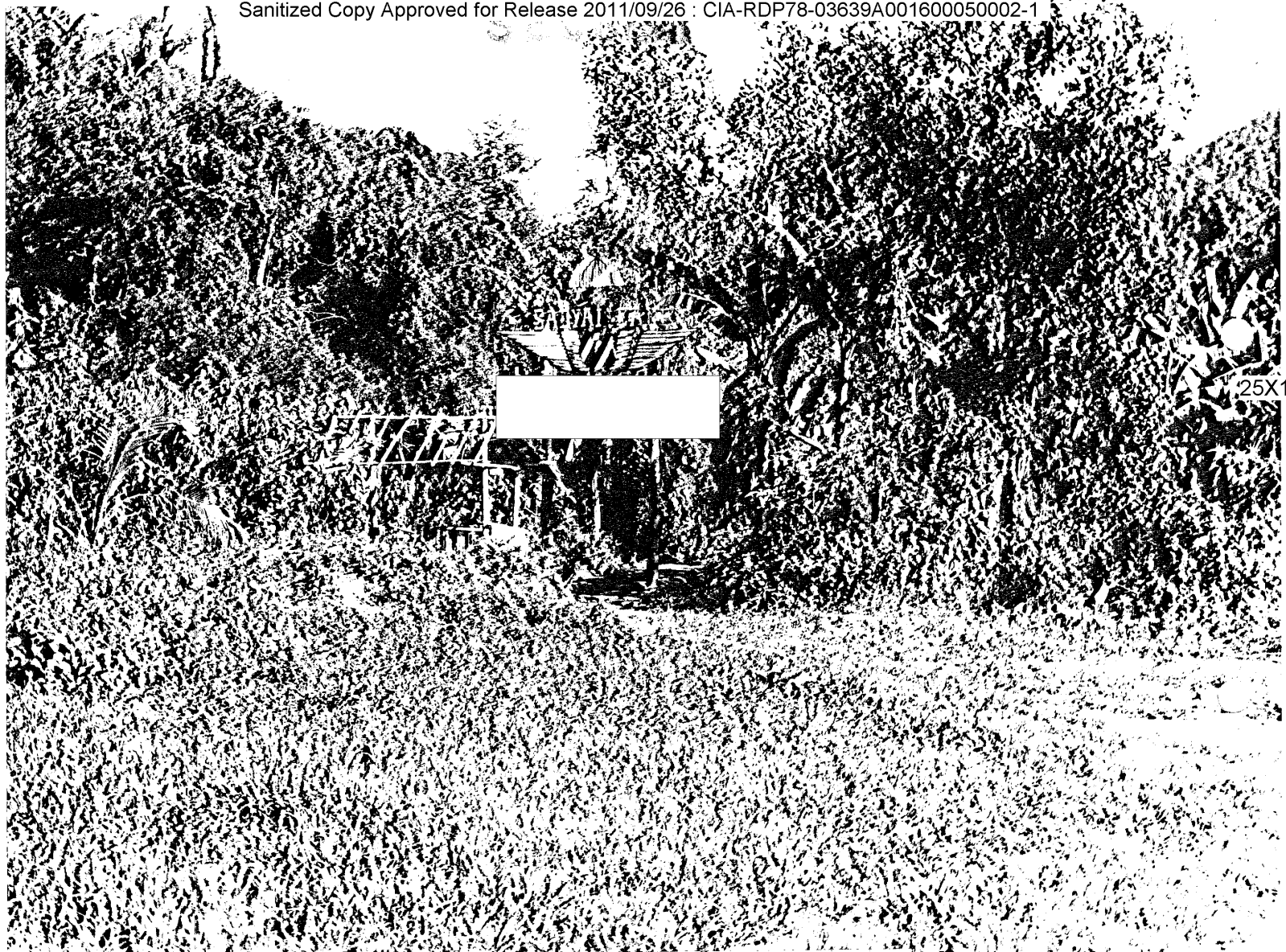


Photo "A" Drop Zone and Chopper Strip at Jungle Camp. Gate over path leading to billet area.

SECRET

Sanitized Copy Approved for Release 2011/09/26 : CIA-RDP78-03639A001600050002-1

Sanitized Copy Approved for Release 2011/09/26 : CIA-RDP78-03639A001600050002-1 Photo B

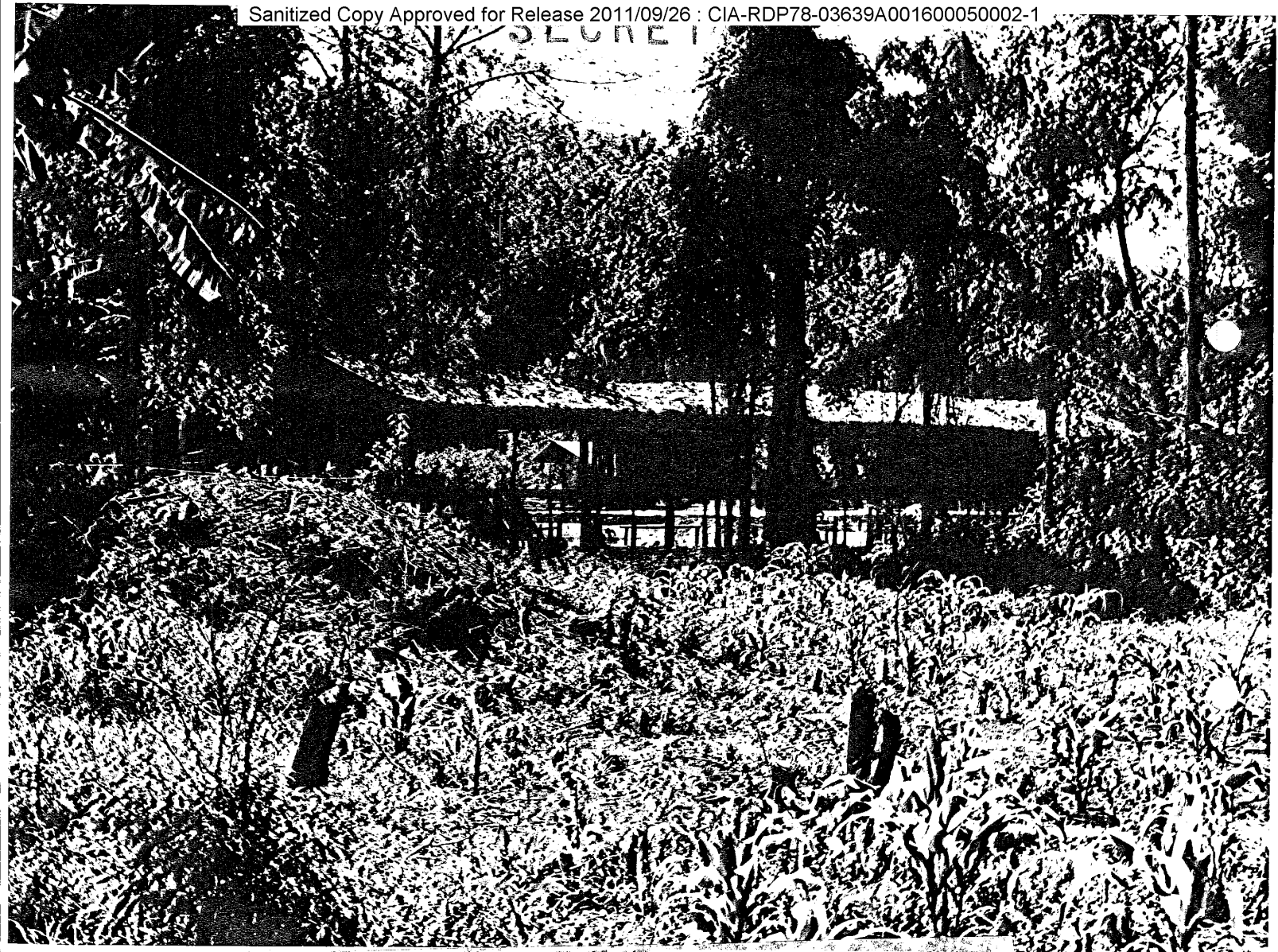


25X1

Photo "B" Gate and Path to billet area.

Sanitized Copy Approved for Release 2011/09/26 : CIA-RDP78-03639A001600050002-1

SECRET



SECRET

Photo #C Look toward Billet Area #1 from path to D:Z.

Sanitized Copy Approved for Release 2011/09/26 : CIA-RDP78-03639A001600050002-1

Sanitized Copy Approved for Release 2011/09/26 : CIA-RDP78-03639A001600050002-1



25X1

**SECRET**

Photo "D" Entrance to Billet Area #1. Photo E taken from point A.

Sanitized Copy Approved for Release 2011/09/26 : CIA-RDP78-03639A001600050002-1



Sanitized Copy Approved for Release 2011/09/26 : CIA-RDP78-03639A001600050002-1

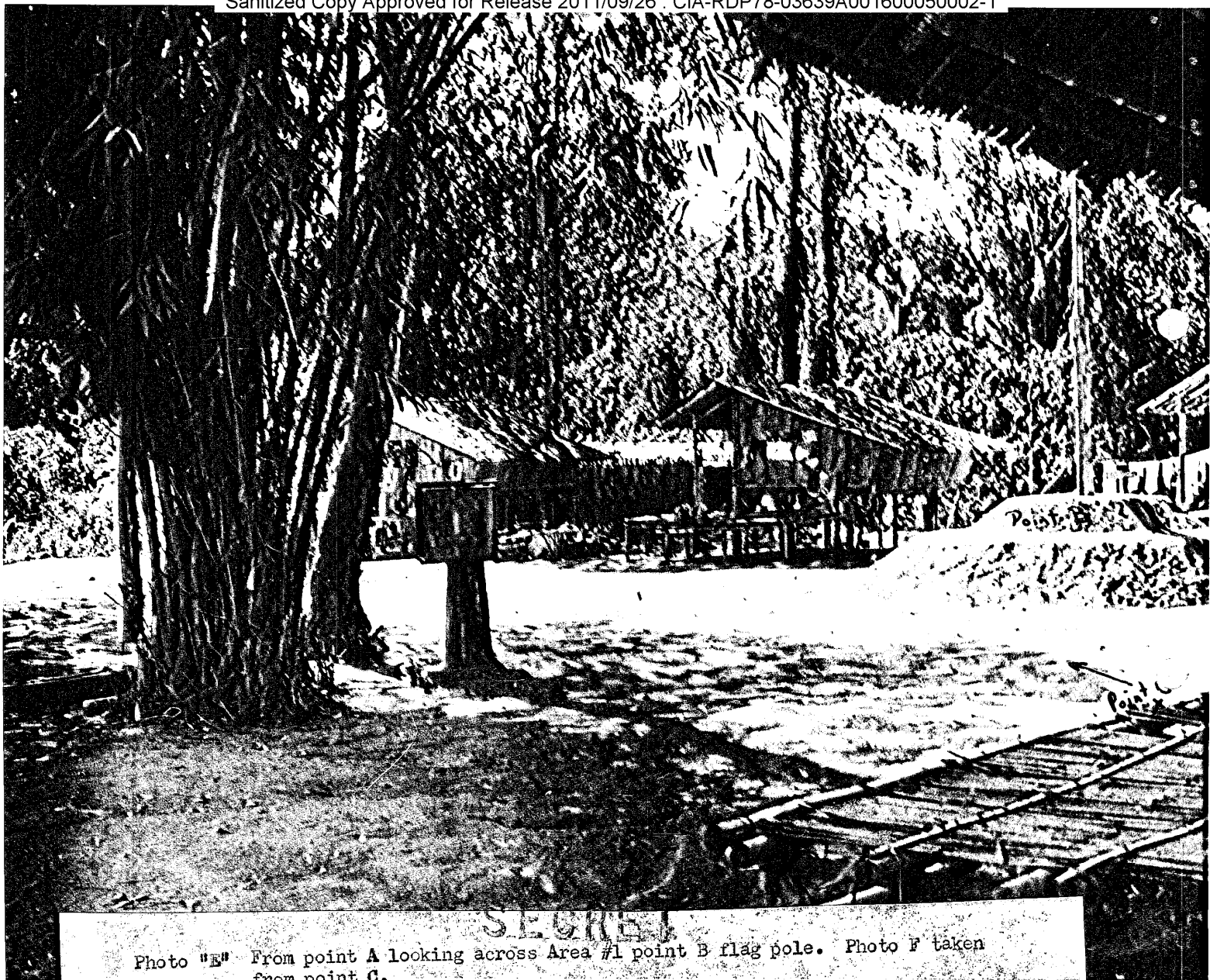
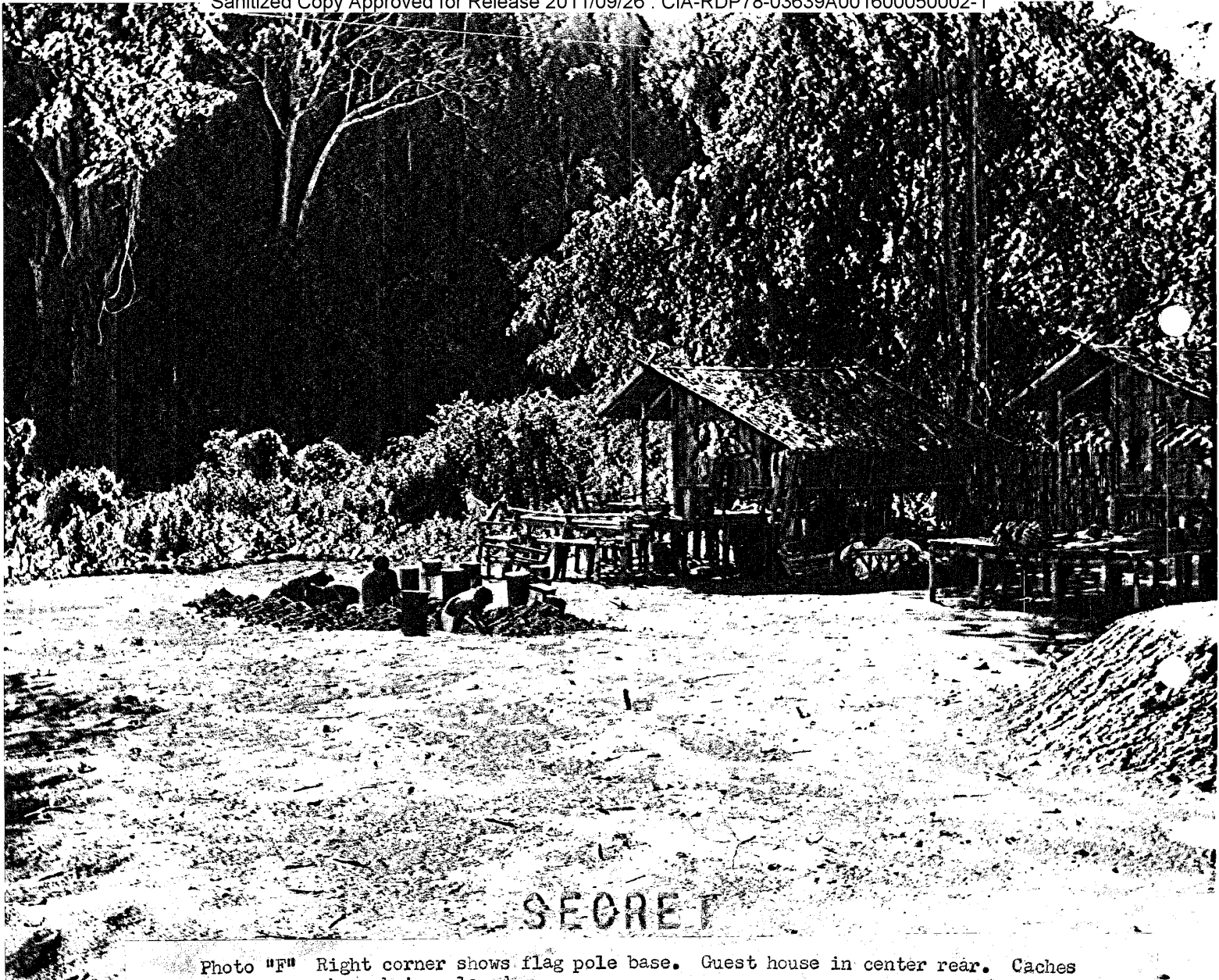


Photo "E" From point A looking across Area #1 point B flag pole. Photo F taken from point C.

Sanitized Copy Approved for Release 2011/09/26 : CIA-RDP78-03639A001600050002-1

SECRET

Sanitized Copy Approved for Release 2011/09/26 : CIA-RDP78-03639A001600050002-1

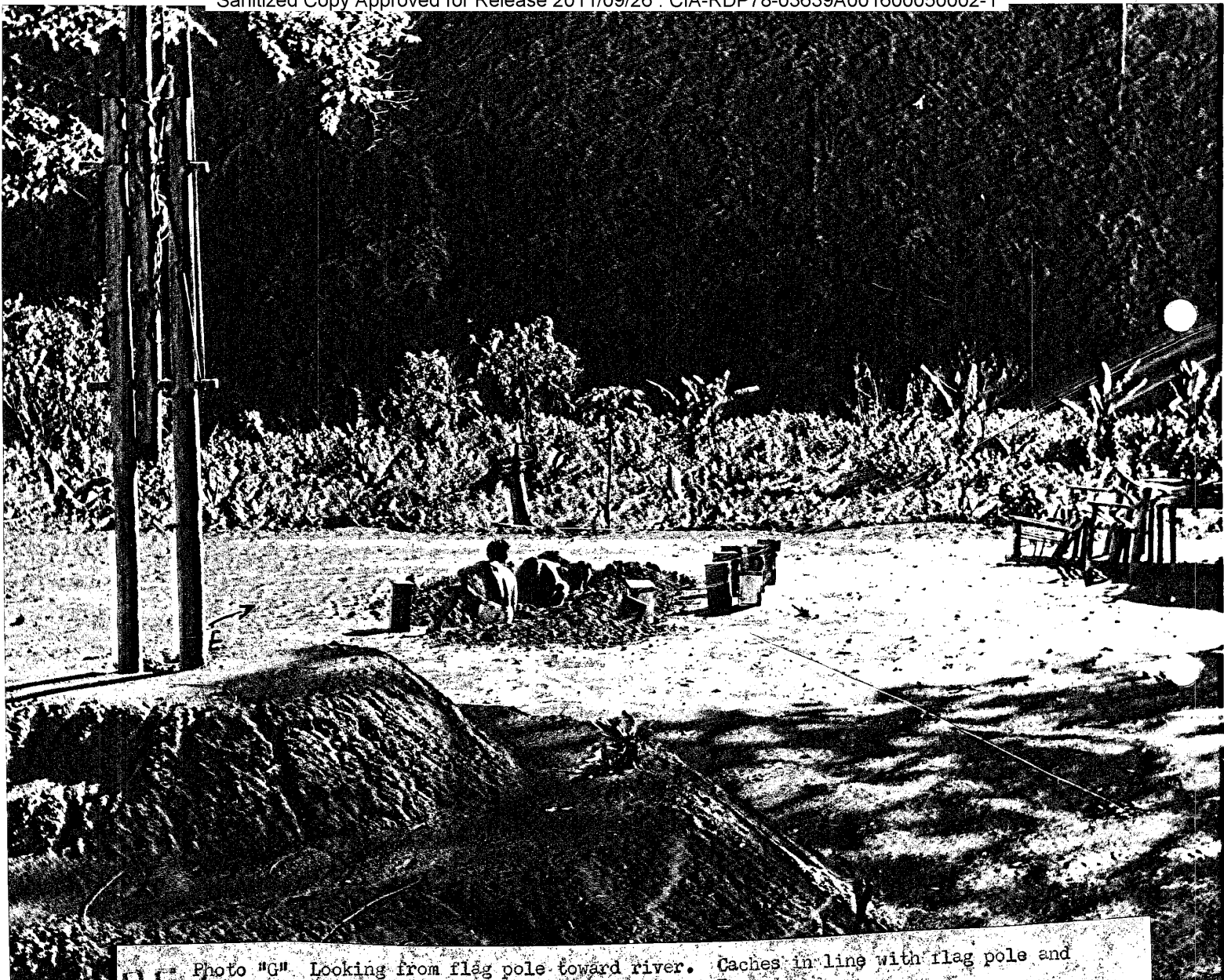


SECRET

Photo "F" Right corner shows flag pole base. Guest house in center rear. Caches shown being placed.

Sanitized Copy Approved for Release 2011/09/26 : CIA-RDP78-03639A001600050002-1

SECRET  
Sanitized Copy Approved for Release 2011/09/26 : CIA-RDP78-03639A001600050002-1



SECRET  
Photo "G" Looking from flag pole toward river. Caches in line with flag pole and stump "D". Photo "H" taken from point E.

Sanitized Copy Approved for Release 2011/09/26 : CIA-RDP78-03639A001600050002-1

SECRET  
Sanitized Copy Approved for Release 2011/09/26 : CIA-RDP78-03639A001600050002-1



Photo "H" From flag pole to river.

SECRET  
Sanitized Copy Approved for Release 2011/09/26 : CIA-RDP78-03639A001600050002-1

Sanitized Copy Approved for Release 2011/09/26 : CIA-RDP78-03639A001600050002-1

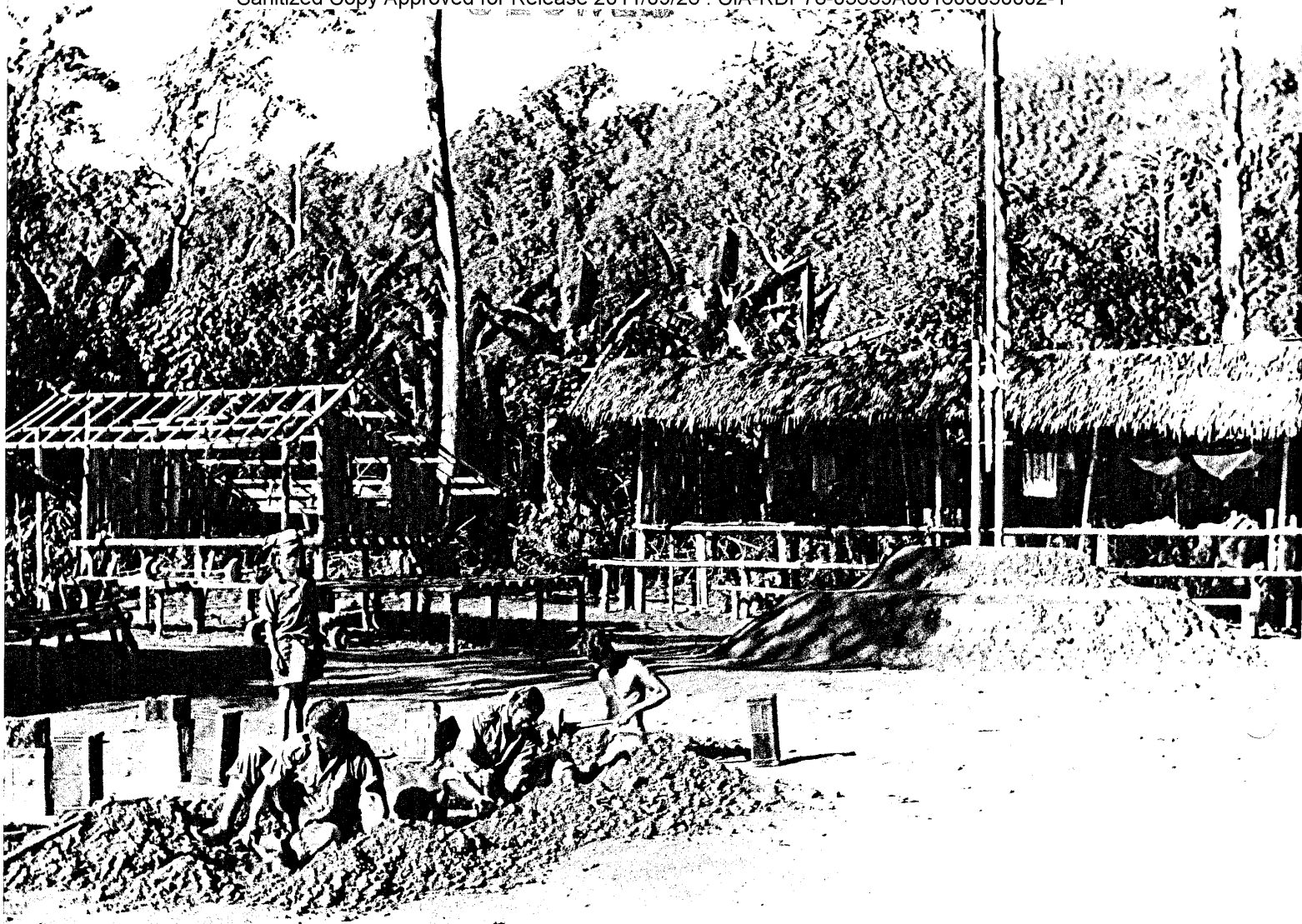


SECRET

Photo "I" From front of flag pole looking toward entrance to Area #1.

Sanitized Copy Approved for Release 2011/09/26 : CIA-RDP78-03639A001600050002-1

Sanitized Copy Approved for Release 2011/09/26 : CIA-RDP78-03639A001600050002-1



SECRET

Photo "J" From caches looking toward troop barracks.

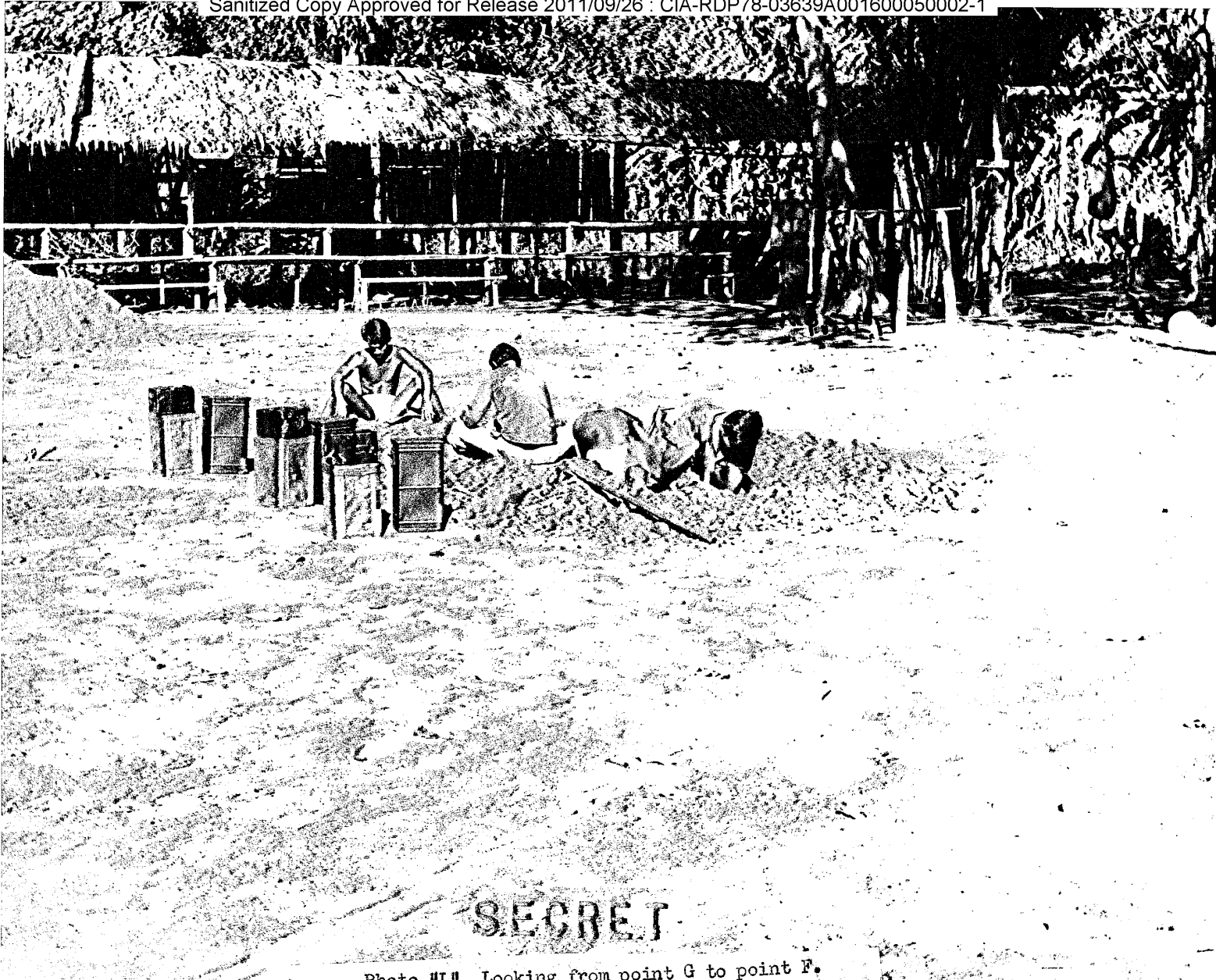
Sanitized Copy Approved for Release 2011/09/26 : CIA-RDP78-03639A001600050002-1



Photo "K" Looking from point F, Photo I toward guest house. Where caches are located.

SECRET

Sanitized Copy Approved for Release 2011/09/26 : CIA-RDP78-03639A001600050002-1



SECRET

Photo "L" Looking from point G to point F.

Sanitized Copy Approved for Release 2011/09/26 : CIA-RDP78-03639A001600050002-1



Sanitized Copy Approved for Release 2011/09/26 : CIA-RDP78-03639A001600050002-1

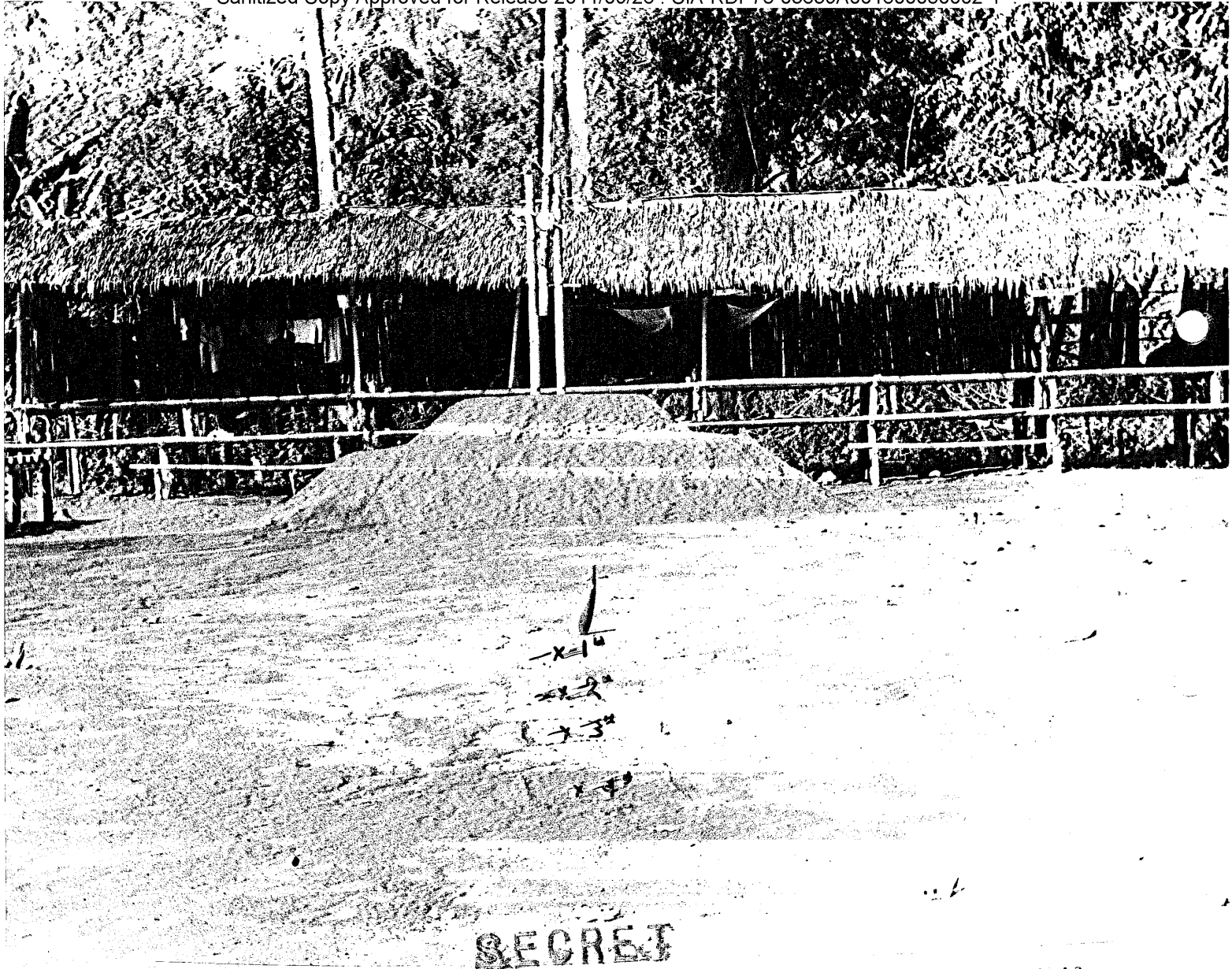


Photo "M" Looking from stump D Photo "G" to flag pole caches in line with knife.

Sanitized Copy Approved for Release 2011/09/26 : CIA-RDP78-03639A001600050002-1

~~SECRET~~

Sanitized Copy Approved for Release 2011/09/26 : CIA-RDP78-03639A001600050002-1



~~SECRET~~

Photo "N" Materials placed in each cache.

Sanitized Copy Approved for Release 2011/09/26 : CIA-RDP78-03639A001600050002-1

SECRET

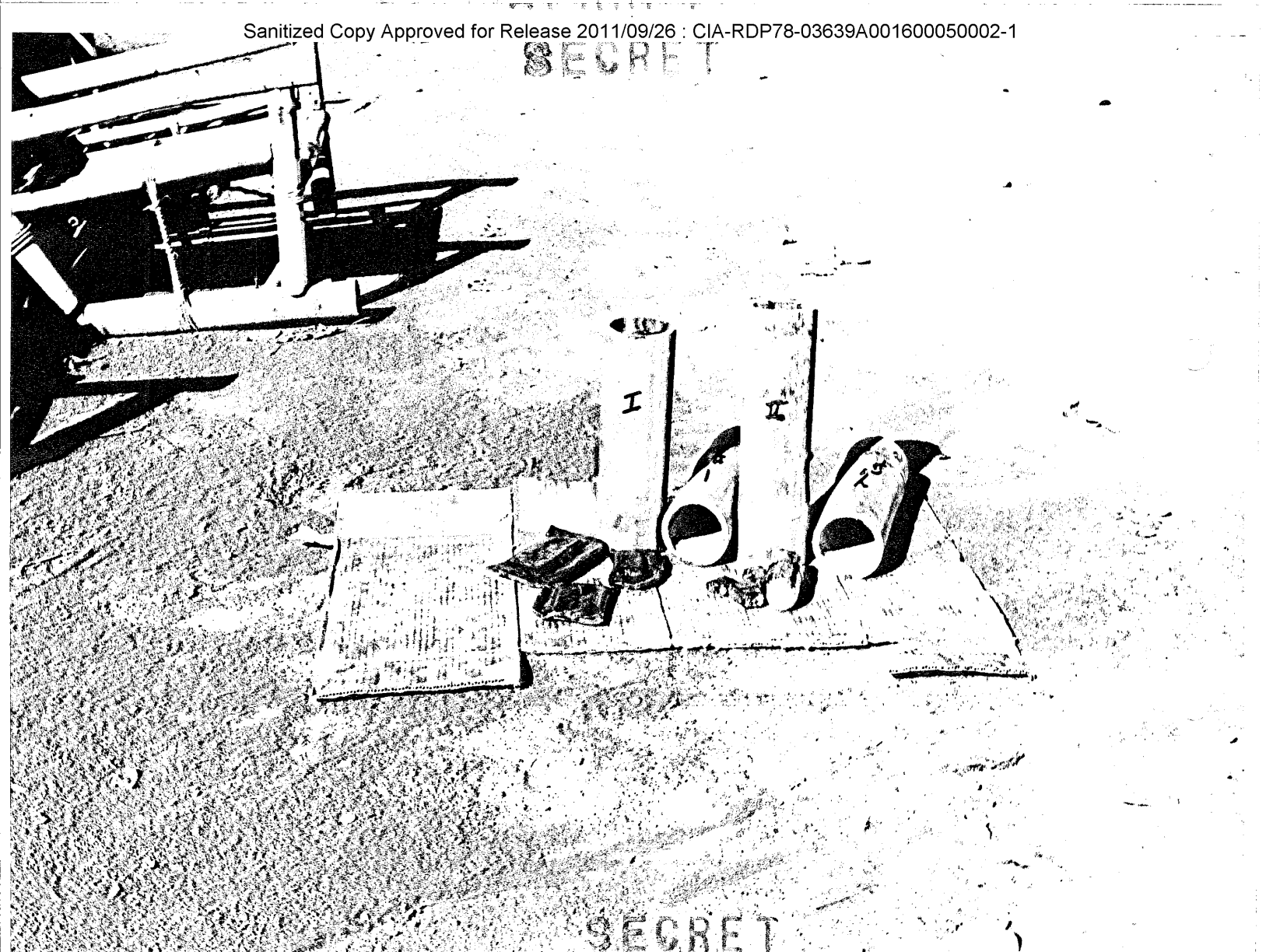


Photo "O" Bamboo sections used as containers with items placed in each. No 1 shows items on bamboo and I shows tube after items were placed in it. Same on NO. 2 and II.