

STAT

Declassified in Part - Sanitized Copy Approved for Release 2013/12/04 :

CIA-RDP78-03535A002000010011-5

**PROJECT 2529**

**SENSE AMPLIFIERS;  
REWRITE DRIVERS  
STROBER AND LOCK OUT**

Declassified in Part - Sanitized Copy Approved for Release 2013/12/04 :

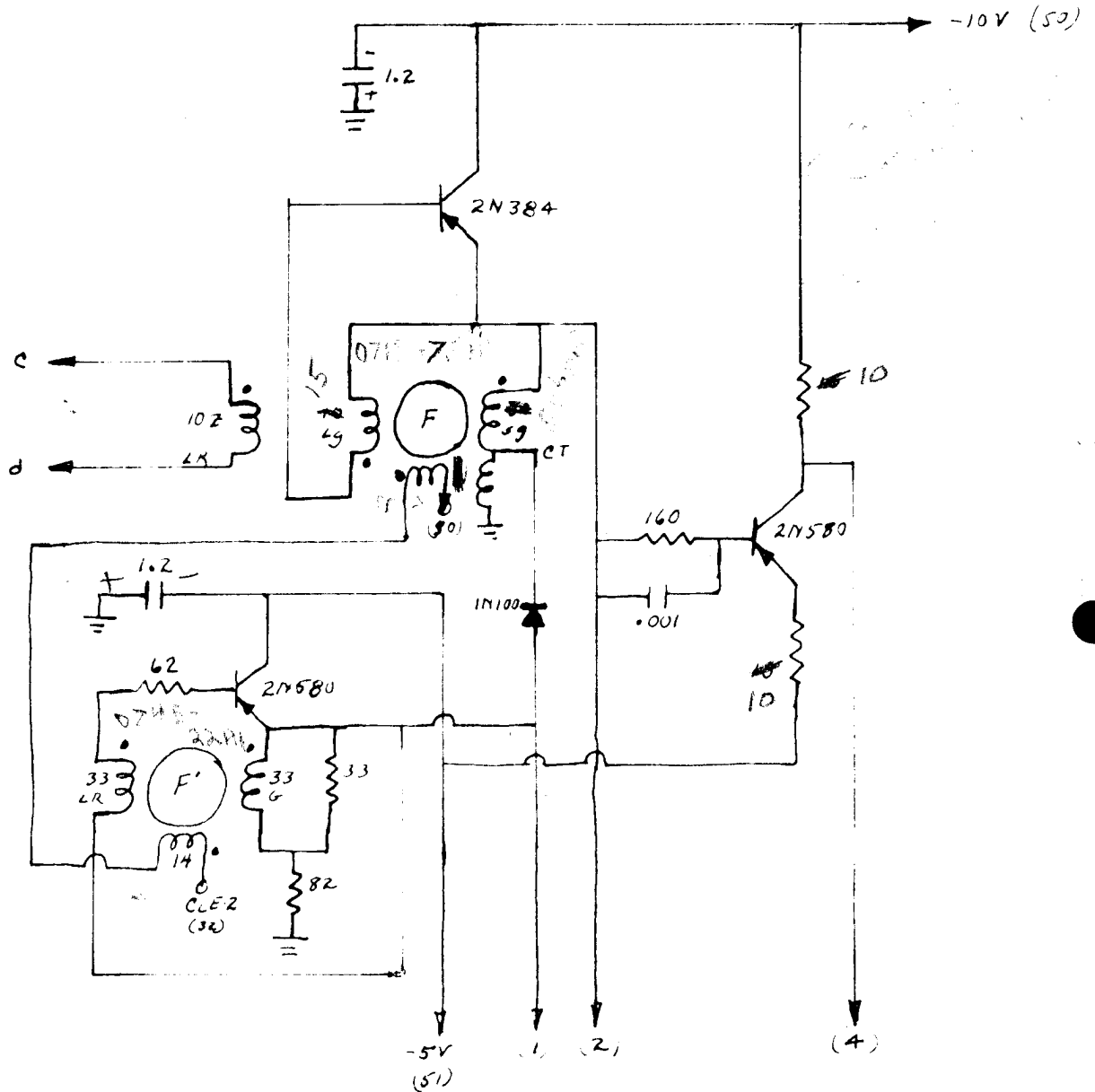
CIA-RDP78-03535A002000010011-5

BY  
CHKD BY

DATE  
DATE

SUBJECT *Sense Strober +  
Sense Lock ~~in~~ Out  
Board #6*

SHEET NO.  
JOB NO. 2529



1. Lock out "A" 51. - 5V
2. Strob Line
4. Lock out "B"
3. Leave space
5. Leave space

DOCUMENT NO. \_\_\_\_\_  
 NO CHANGE IN CLASS.   
 DECLASSIFIED  
 CLASS. CHANGED TO: TS & C  
 NEXT REVIEW DATE: 2010  
 AUTH: HR 70-2  
 DATE: 9 DEC 1982 REVIEWER: 064540

Revised: 30 March 1968  
 6 Oct. 68

This document is part of an integrated file. If separated from the file it must be subjected to individual systematic review.

## Sense Amplifiers

4 Aug 60 - stabilizing capacitors must be increased to 22 muf, or else a bridge winding must be added to cancel effect of diode capacitance to collector wdg.  $\text{OT}$  to finish 1st model with 22 muf capacitors (or even original 10 muf ceramics), - but no low temps.

not final

5 Aug 60 - 7-turn "band x" winding for serial output driver, on 5 cores must be made 8 turns, incr. output wdg to

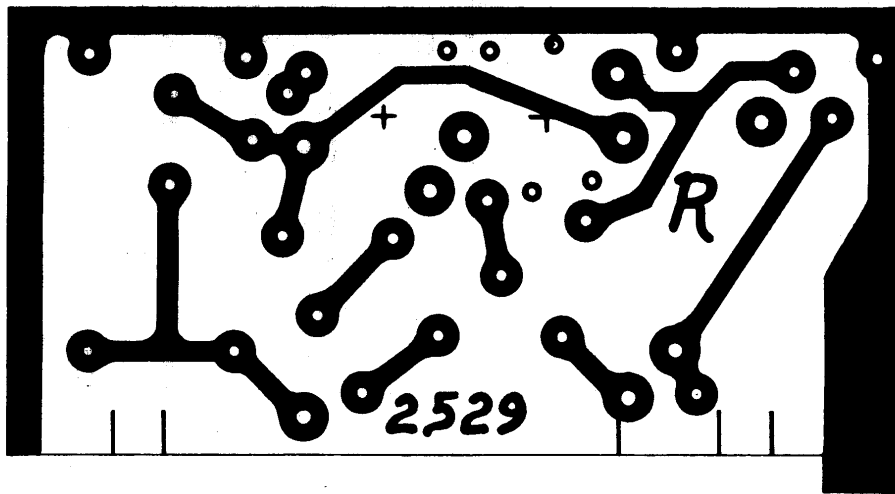
ADD: 2-turn wdg. linking all 5 cores, for use in BKSP by cl-2.

CHANGE: 1.0 MFD (1.2 MFD) emitter byf to 2.2 MFD  $\frac{20V}{1}$  STA-543, to improve snr time

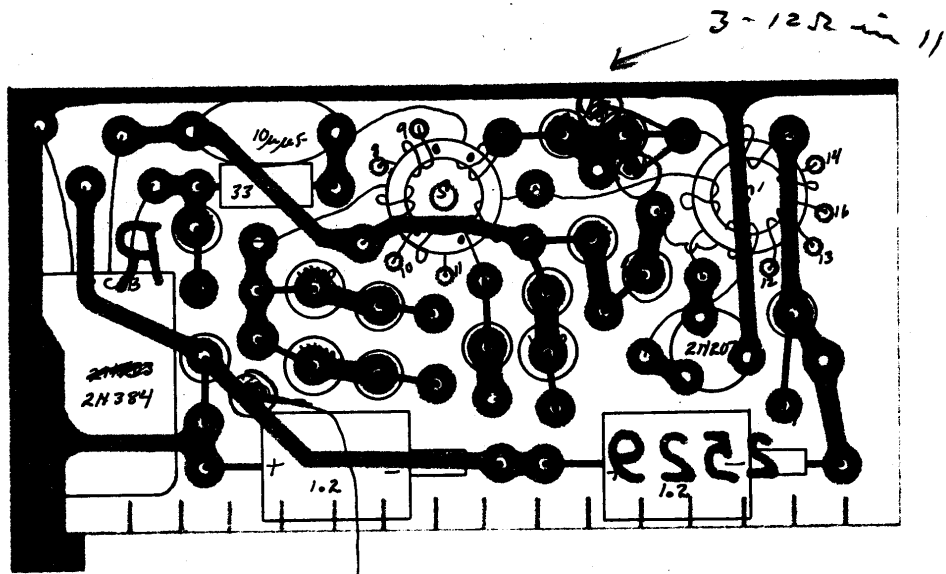
This document is part of an integrated file. If separated from the file it must be subjected to individual systematic review.







This document is part of an integrated file. If separated from the file it must be subjected to individual systematic review.

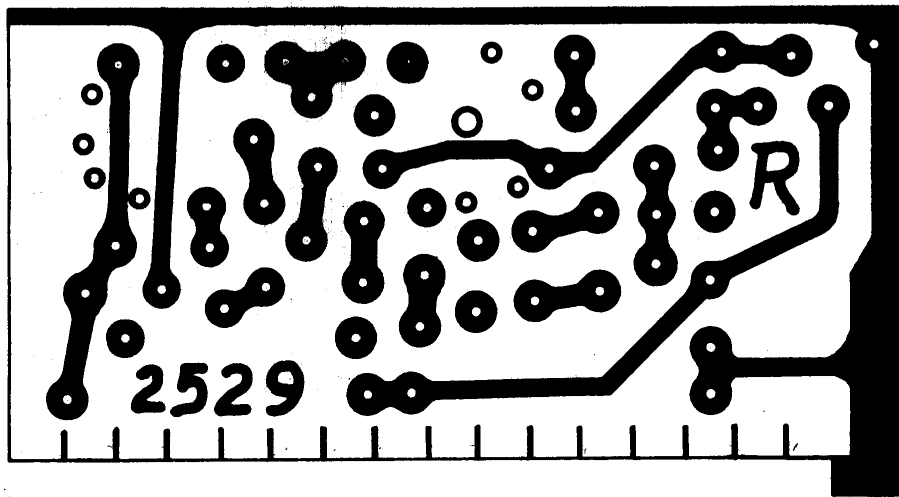


Type + Rec  
Thresh.

This document is part of an integrated file. If separated from the file it must be subjected to individual systematic review.

Sense Ampl +  
Rewrite Driver

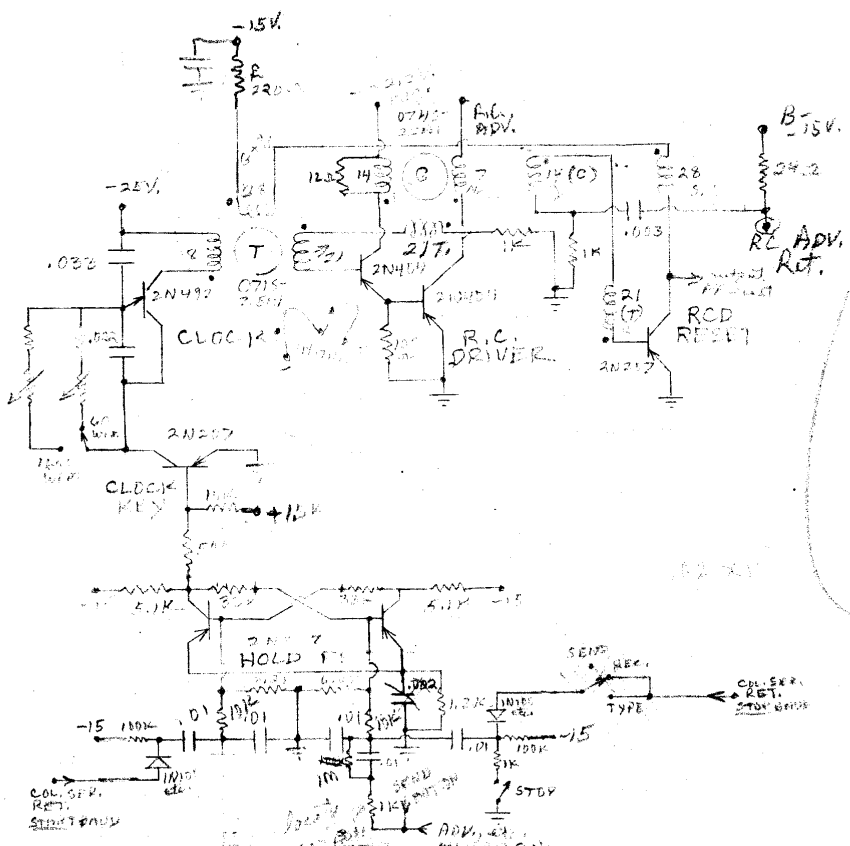
Revised 13 April 1960



This document is part of an integrated file. If separated from the file it must be subjected to individual systematic review.





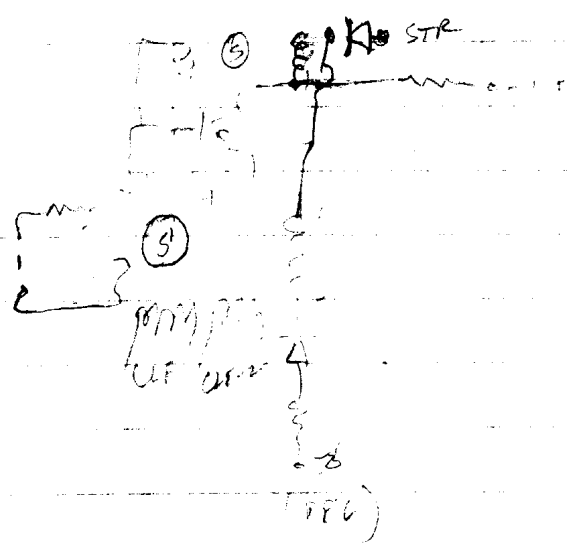


*Obaf*

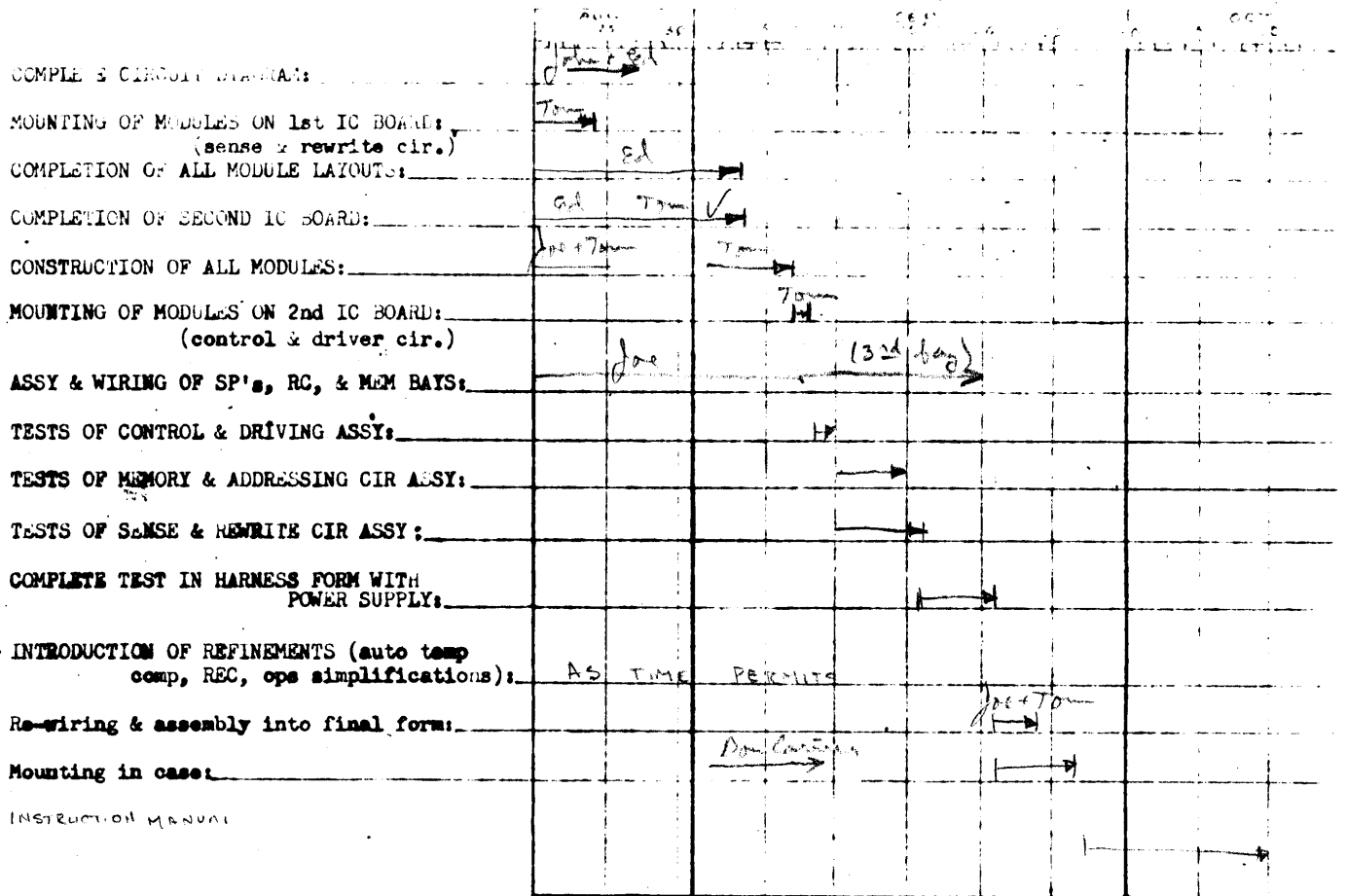
This document is part of an integrated file. If separated from the file it must be subjected to individual systematic review.

This document is part of an integrated file. If separated from the file it must be subjected to individual systematic review.

SECRET



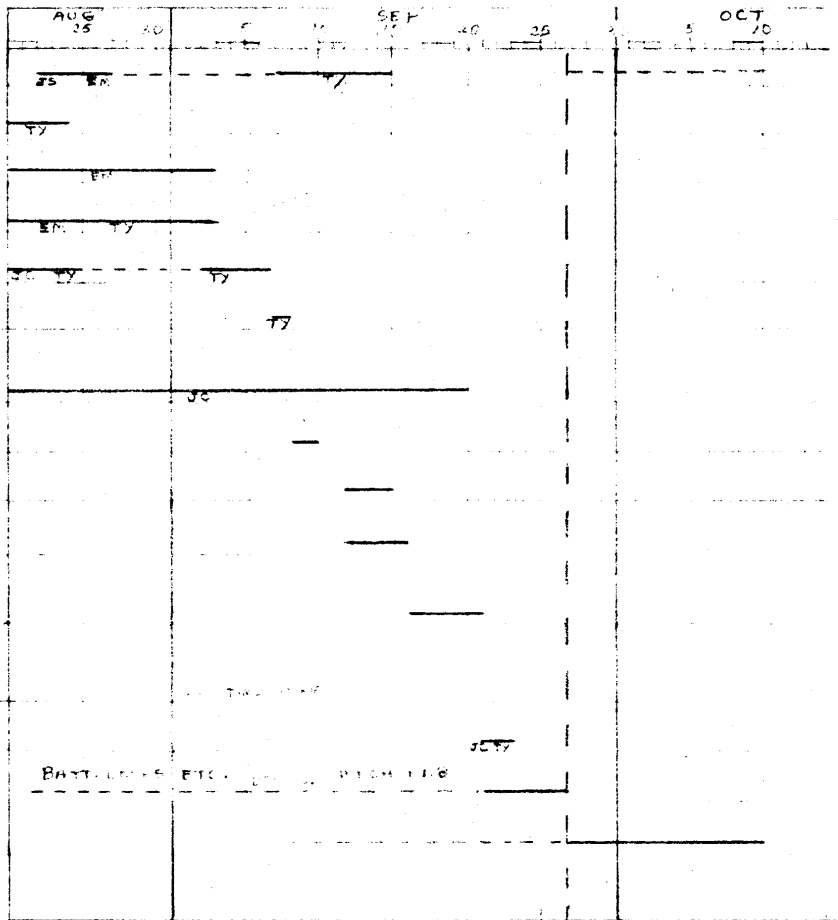
7MM



This document is part of an integrated file. If separated from the file it must be subjected to individual systematic review.

<b>Project Schedule</b>		2529
DRAWN BY:	DATE:	22 Aug 60
CHKD BY:	DWG. NO.:	
APPD. BY:		

COMPLETE CIRCUIT DIAGRAM:  
 MOUNTING OF MODULES ON 1st IC BOARD:  
 (sense & rewrite cir.)  
 COMPLETION OF ALL MODULE LAYOUTS:  
 COMPLETION OF SECOND IC BOARD:  
 CONSTRUCTION OF ALL MODULES:  
 MOUNTING OF MODULES ON 2nd IC BOARD:  
 (control & driver cir.)  
 ASSY & WIRING OF SP's, RC, & MEM BAYS:  
 TESTS OF CONTROL & DRIVING ASSY: \_\_\_\_\_  
 TESTS OF MEMORY & ADDRESSING CIR ASSY: \_\_\_\_\_  
 TESTS OF SENSE & REWRITE CIR ASSY: \_\_\_\_\_  
 COMPLETE TEST IN HARNESS FORM WITH  
 POWER SUPPLY:  
 INTRODUCTION OF REFINEMENTS (auto temp  
 comp, REC, ops simplifications): \_\_\_\_\_  
 re-wiring & assembly into final form:  
 Mounting in case:  
 Instruction Manual:



TARGET DATE

27  
SEP

10  
OCT

Project Schedule

2529

This document is part of an integrated file. If separated from the file it must be subjected to individual systematic review.

DRAWN BY:

DATE:

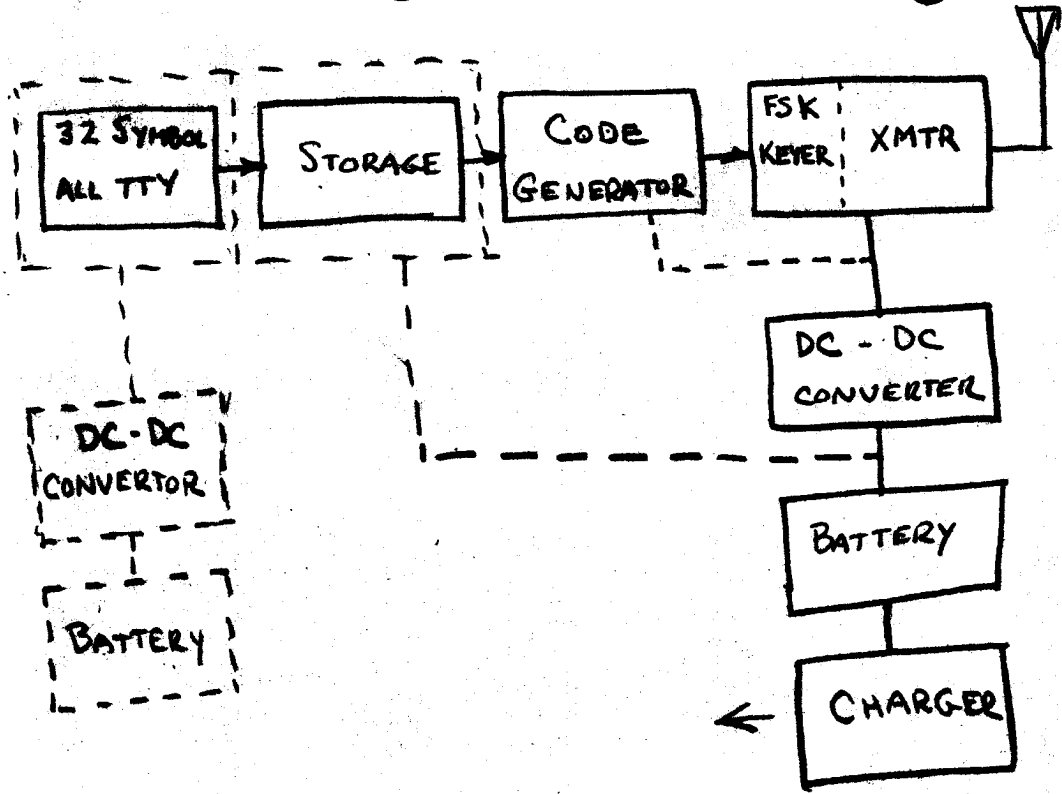
22 Aug 60

CKD. BY:

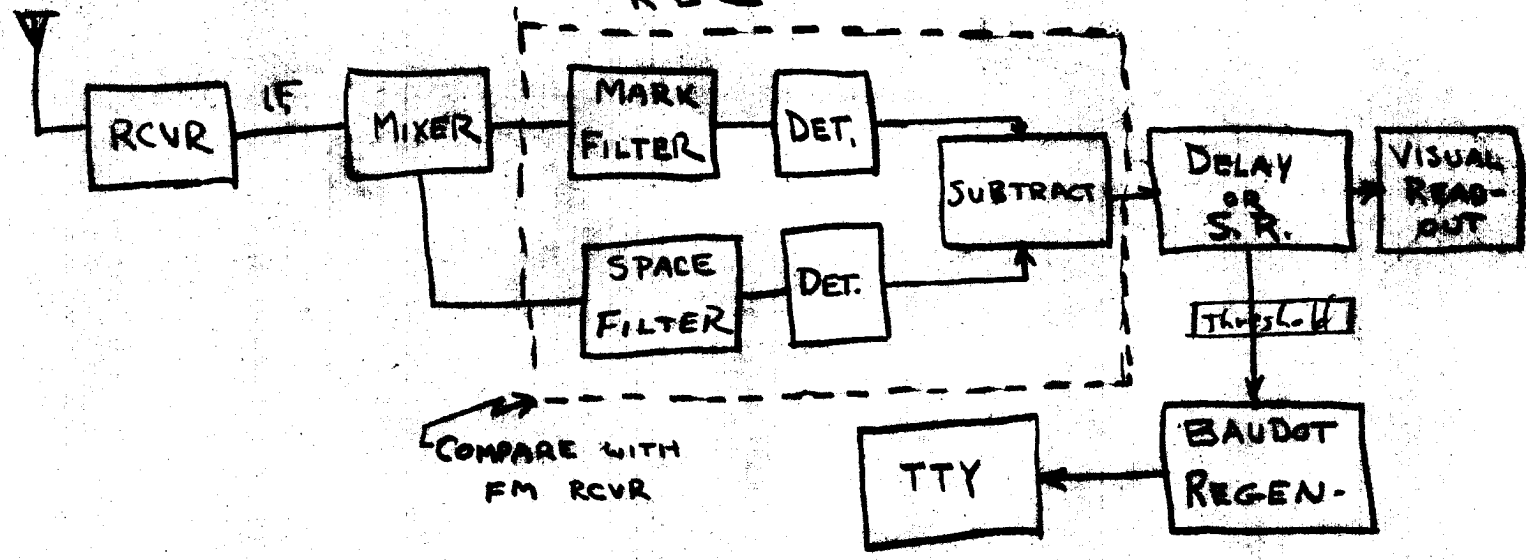
DWG. NO.:

APPD. BY:

# XMIT



# REC

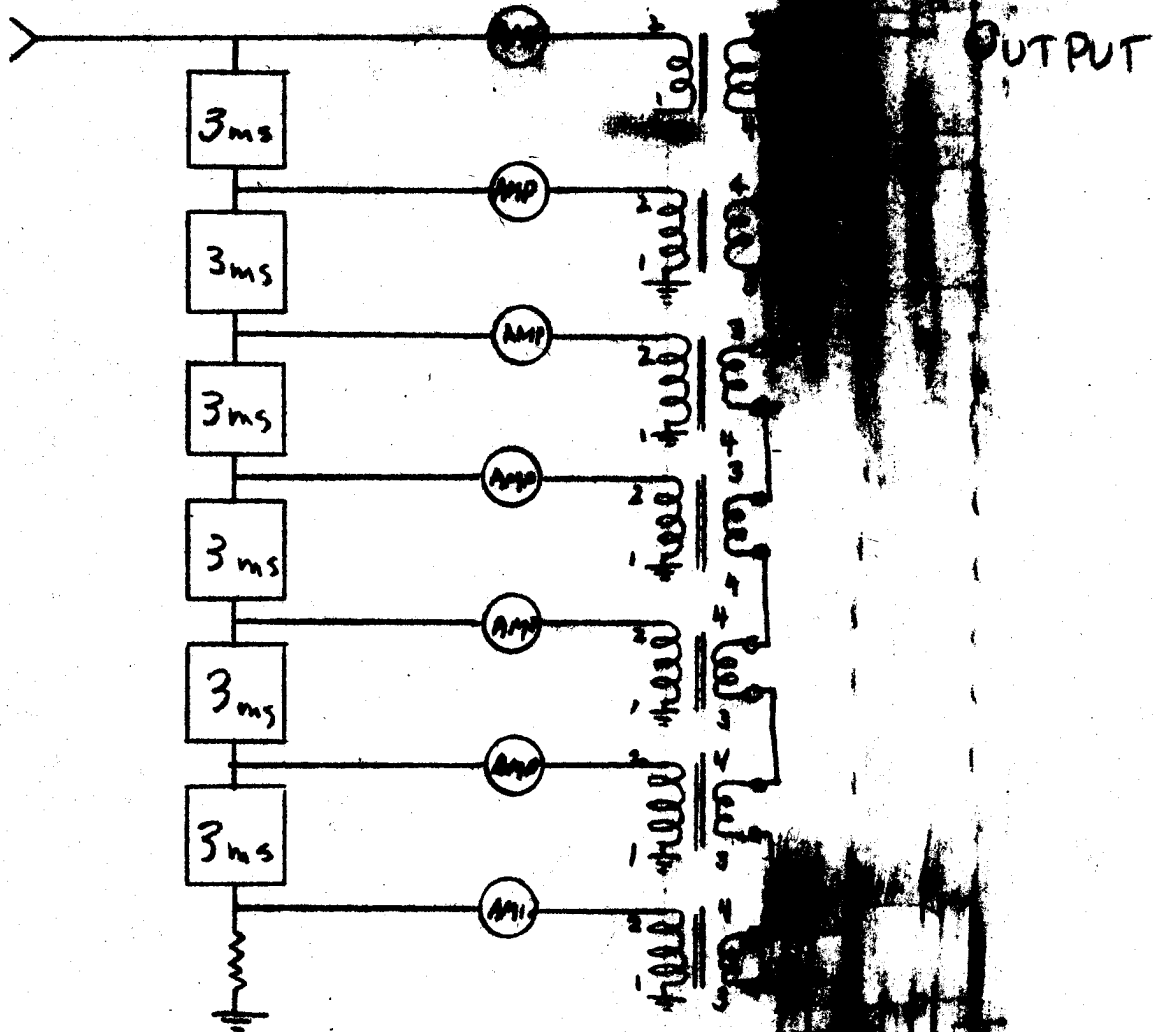


This document is part of an integrated file. If separated from the file it must be subjected to individual systematic review.

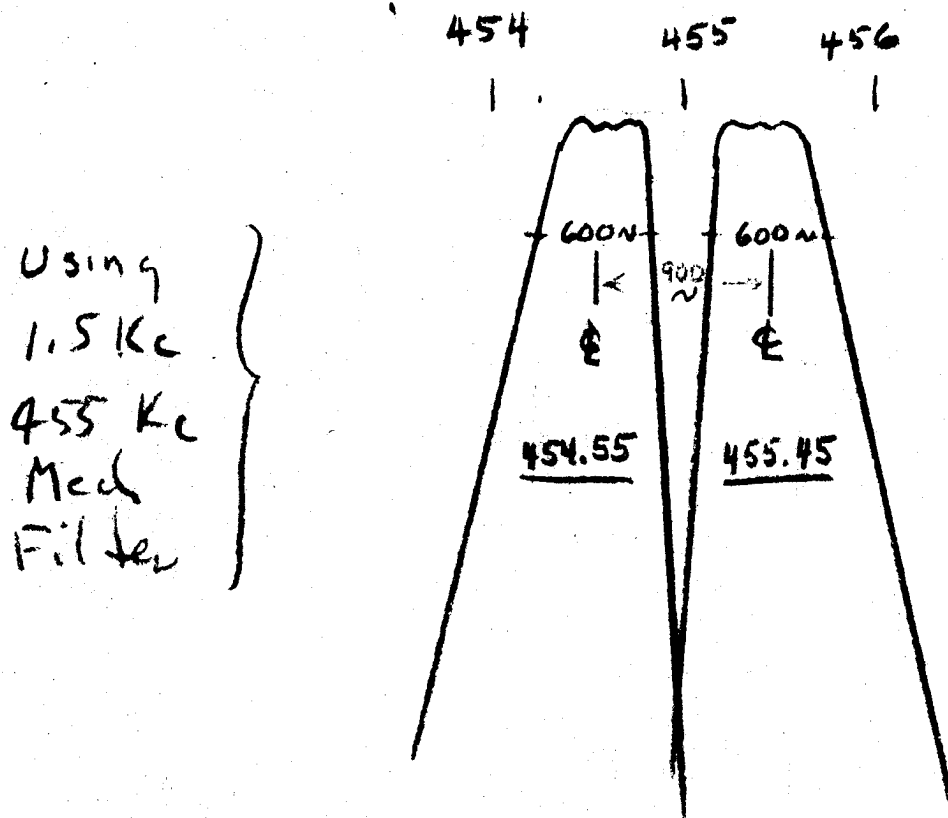
# RS-X

2529

CHKD. BY..... DATE..... JOB NO.....



This document is part of an integrated file. If separated from the file it must be subjected to individual systematic review.



Above filter arrangement to be used if 3 ms. mark-space intervals are used -  
 i.e. - no multipath protection

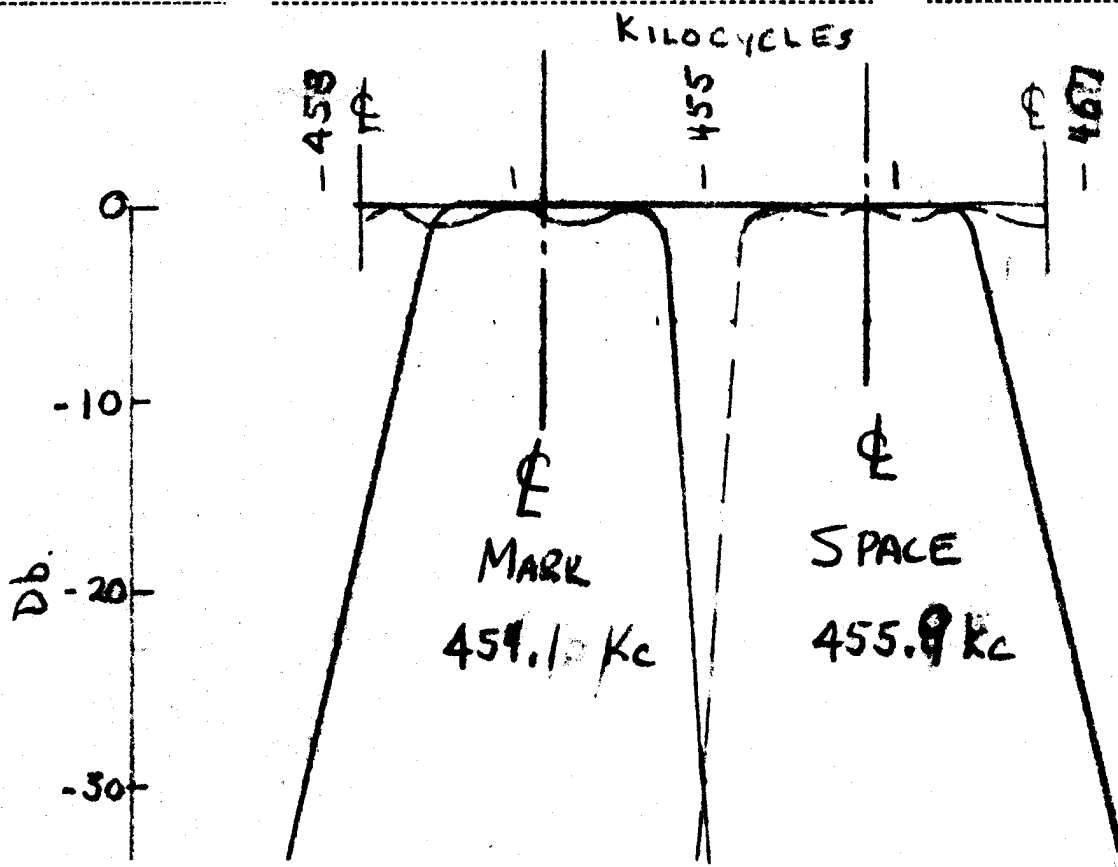


This document is part of an integrated file. If separated from the file it must be subjected to individual systematic review.



CHKD. BY \_\_\_\_\_ DATE \_\_\_\_\_

JOB NO. \_\_\_\_\_



1/2 - F 455 Z - 2

1/2 F 455 Z - 1

F 455 - 31

Case Style "H"

Using 1.5 ms. pulses and 1.5 ms. multipath protection, above filter arrangement to be used.

This document is part of an integrated file. If separated from the file it must be subjected to individual systematic review.

2/10  
1/10

074522  
165

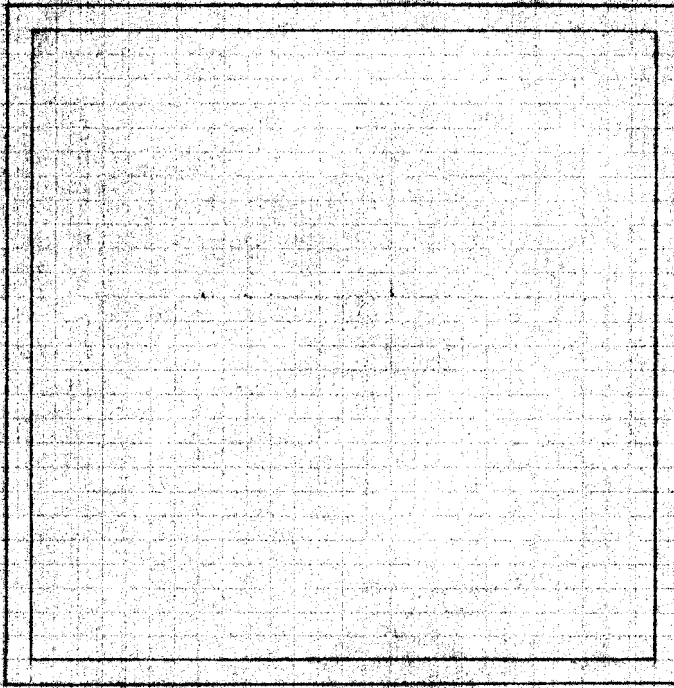
207  
105

1/4 center

2x68-159  
1/100-145

0725-22  
233X-135"

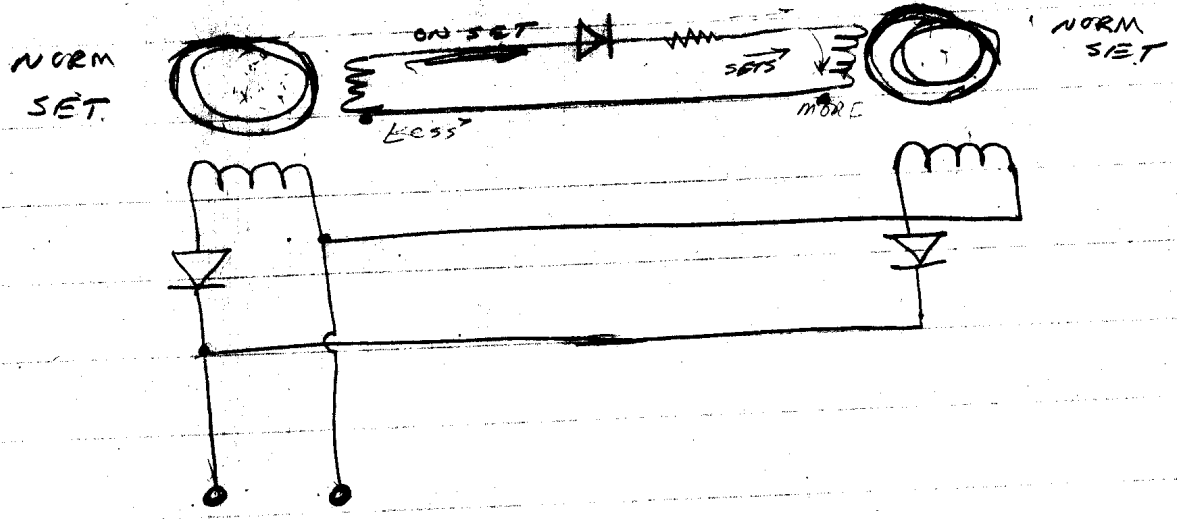
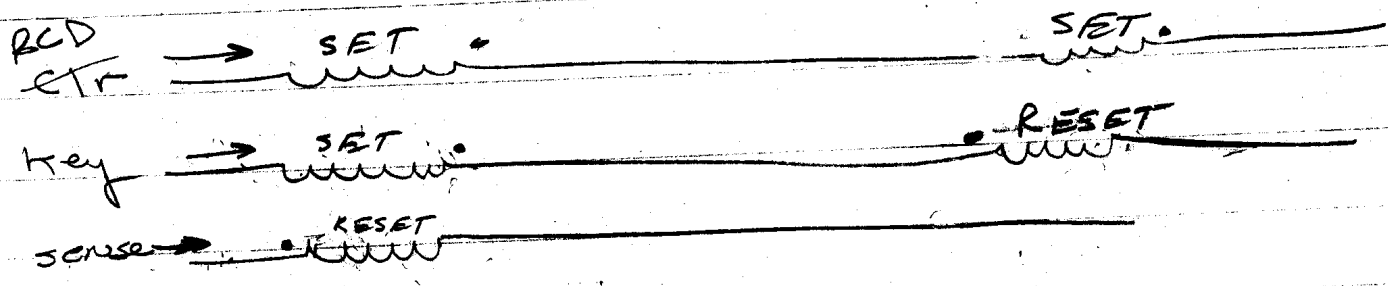
125 (100)  
~ 9/64  
DT 1/1/58



COCOA PRESS, INC. - BROOKLYN 17, N. Y.  
STOCK NO. 459

This document is part of an integrated file. If separated from the file it must be subjected to individual systematic review.

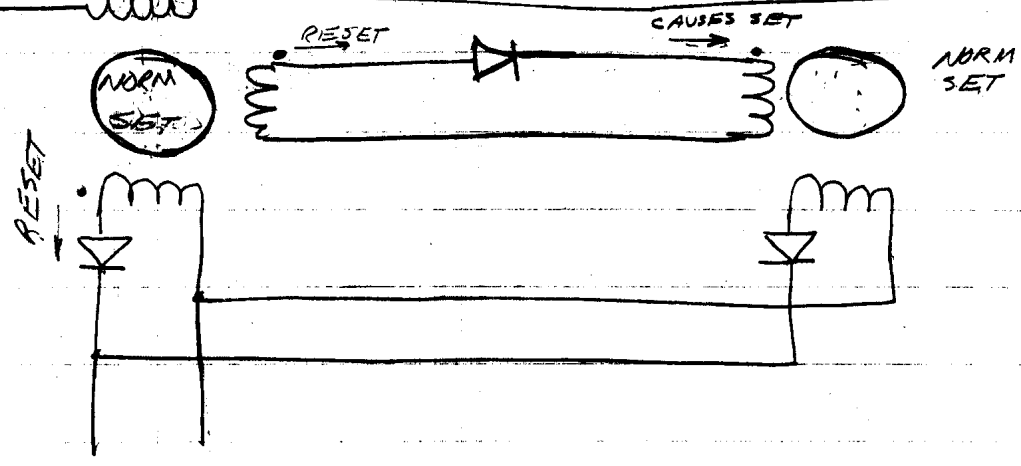
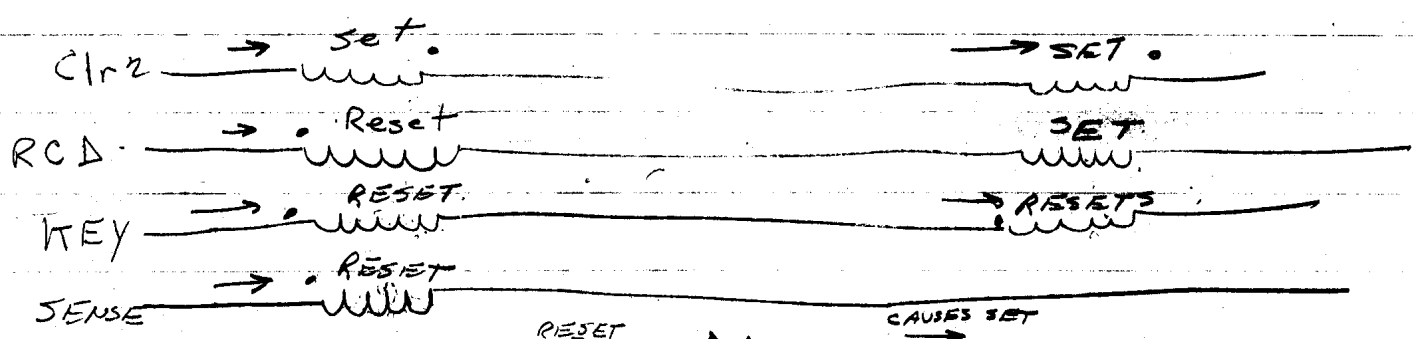
Pulse Out for either one,  
but not both, or neither



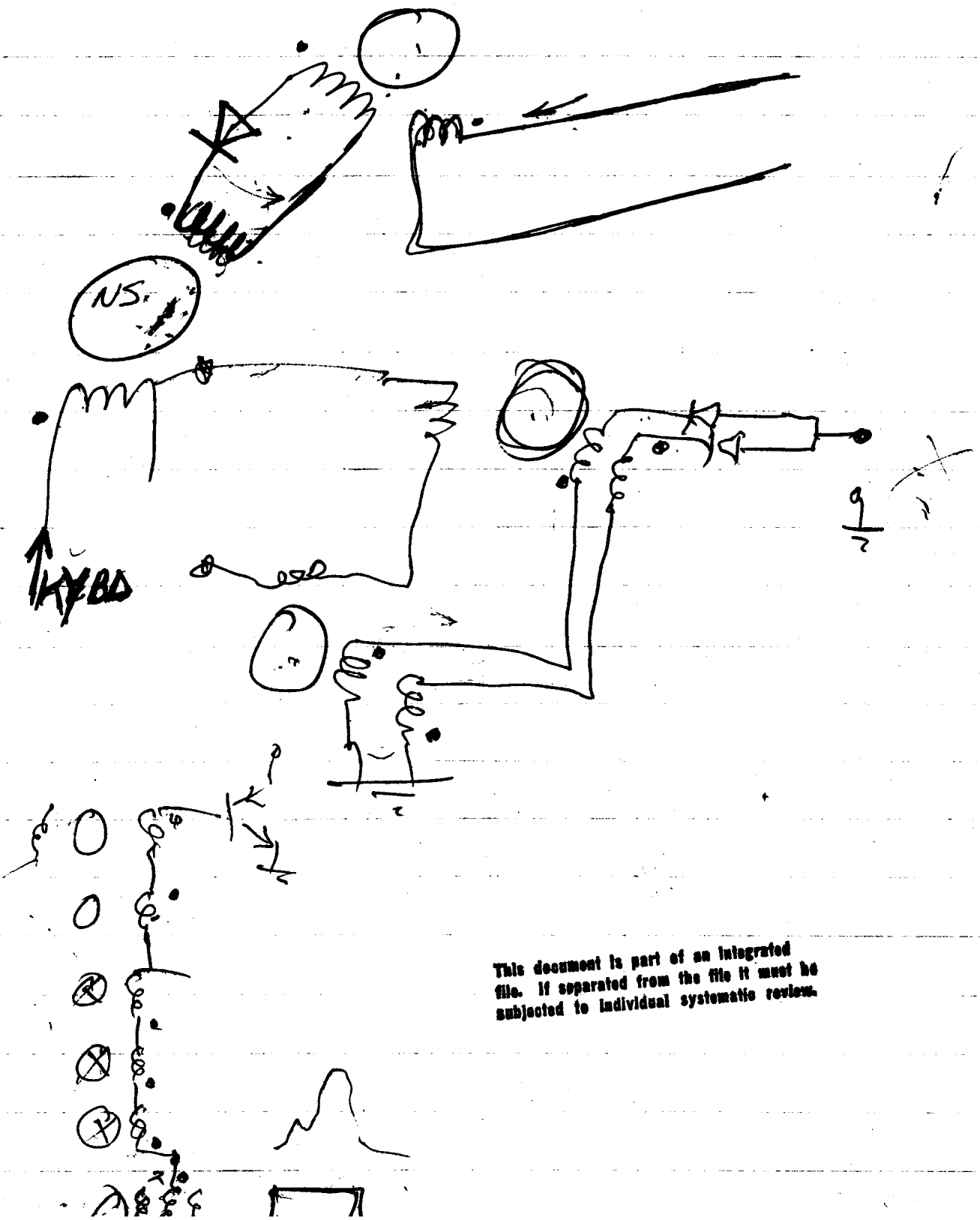
SENSE:	ONE	ZERO	ZER	ONE
KEYBD:	ZER	ONE	ZER	ONE
RESULT:	ONE	ONE	ZER	

This document is part of an integrated file. If separated from the file it must be subjected to individual systematic review.

Pulse out for neither or both, but not for one by itself

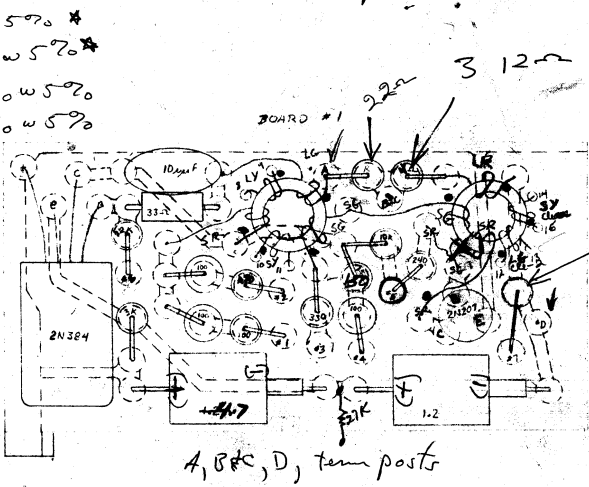


→ • Resets

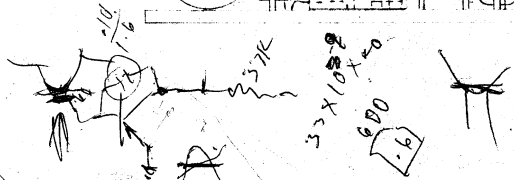
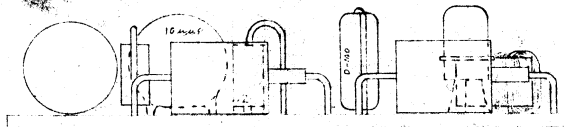


This document is part of an integrated file. If separated from the file it must be subjected to individual systematic review.

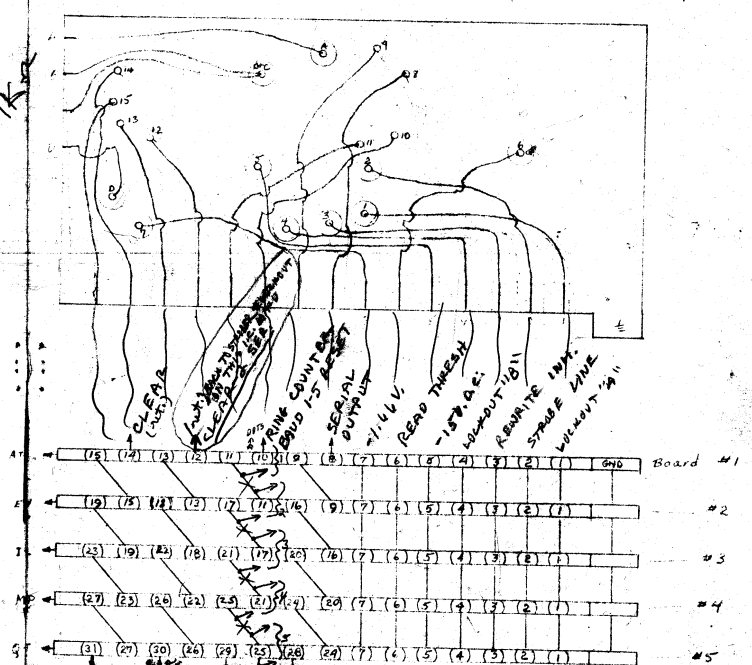
- 10 STA 172 Fansteel 1.2mt 3000 taunta/... Cap \*
- 5 10µmt 1K Central 00100 USB cap
- 15 100Ω 1/10w 5% \*
- 5 (240Ω) 1/10w 5% \*
- 5 100Ω 1/10w 5%
- 5 470Ω 1/10w 5%
- 15 1N100 \*
- 5 330Ω
- 5 33Ω
- 5 22KΩ
- 5 3KΩ
- 5 10KΩ
- 5 150Ω
- 5 1KΩ
- 5 22Ω
- 5 2N384



2N384 Bottom View  
 10 Toroids  
 5 20207



3 12Ω in parallel



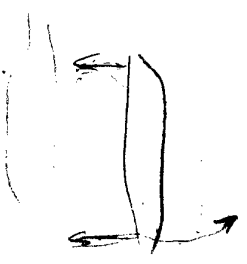
Revised 18 Apr 60 by JWC  
 27 Dec 60 by JWC  
 Sense Amp. & Rewrite Driver

SENSE AMPL.  
& REWRITE  
DRIVER

$10 \times 10^{-3} = 10^{-2}$   
 $10 \times 10^{-3} = 10^{-2}$   
100

$10 \times 10^{-3} = 10^{-2}$   
 $10 \times 10^{-3} = 10^{-2}$   
 $10 \times 10^{-3} = 10^{-2}$

$10 \times 10^{-3} = 10^{-2}$   
 $10 \times 10^{-3} = 10^{-2}$



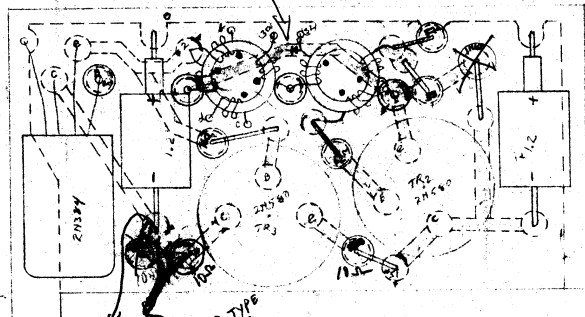
This document is part of an integrated file. If separated from the file it must be subjected to individual systematic review.



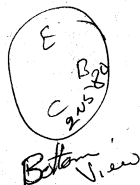
STROBER  
+  
LOCKOUTS

This document is part of an integrated file. If separated from the file it must be subjected to individual systematic review.

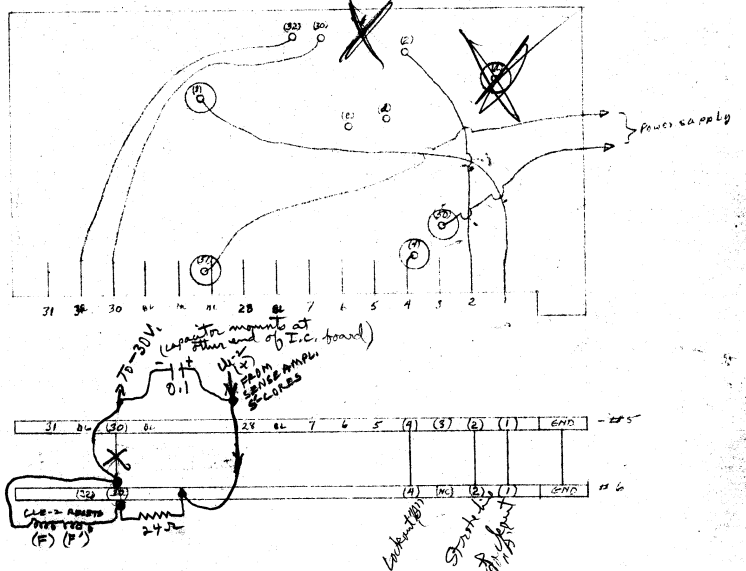
Revised by JTB



- 2 1N100
- 2 2N384
- 2 2N580
- 2 1.2µf 30V (574172)
- 2 toroids
- 1 82-Ω 1/2W 570
- 1 33-Ω " "
- 1 62-Ω " "
- 2 15-Ω " "
- 1 160-Ω " "



200ma  
X 1/2  
= 32V



Sense Stealer & Sense  
Lock out

This document is part of an integrated file. If separated from the file it must be subjected to individual systematic review.

**Page Denied**