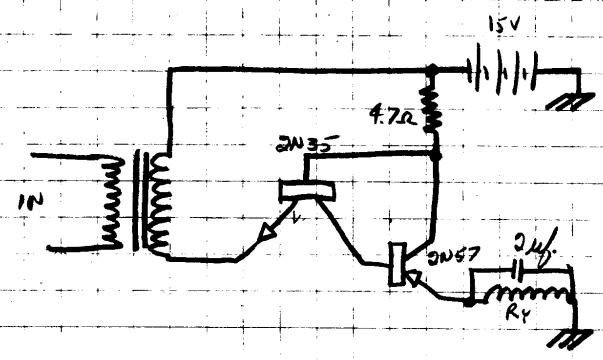
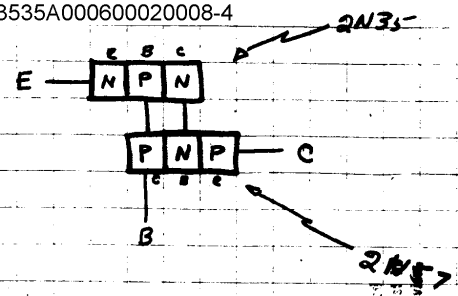


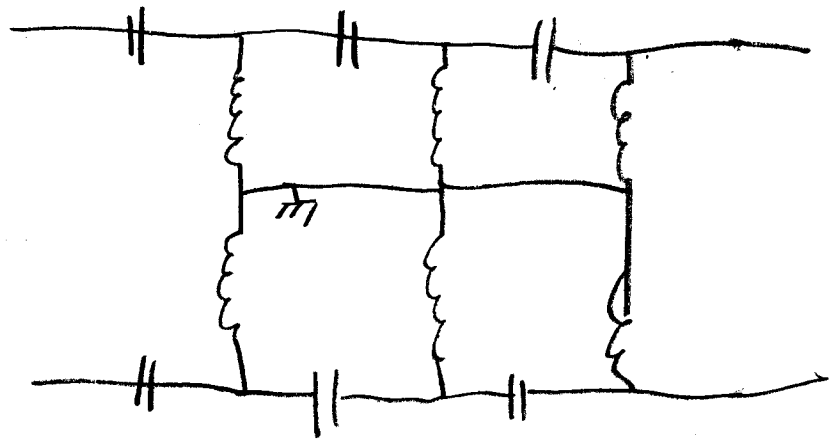
This document is part of an integrated file. If separated from the file it must be subjected to individual systematic review.



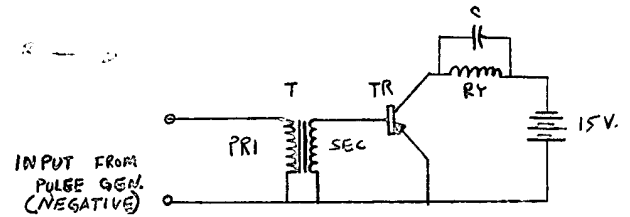
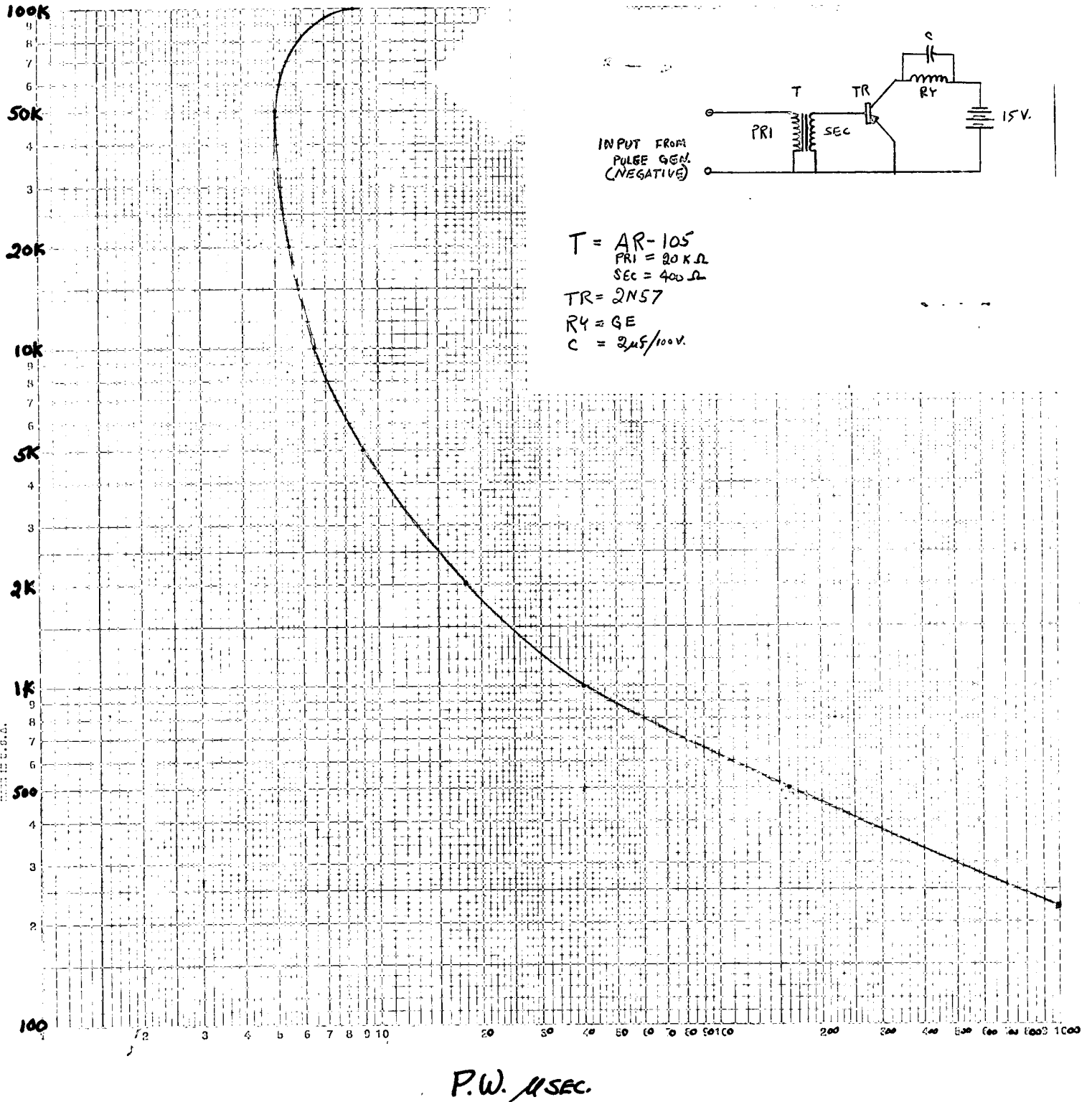
This document is not to be distributed outside the agency to which it is assigned to disseminate information.

Band Pass 405-407
zone 168-169
173-177
Low Pass
503-505

$$C_1 = \frac{1}{4TS}$$



Relative Energy Level For Relay Activation (PRF vs. P.W.)

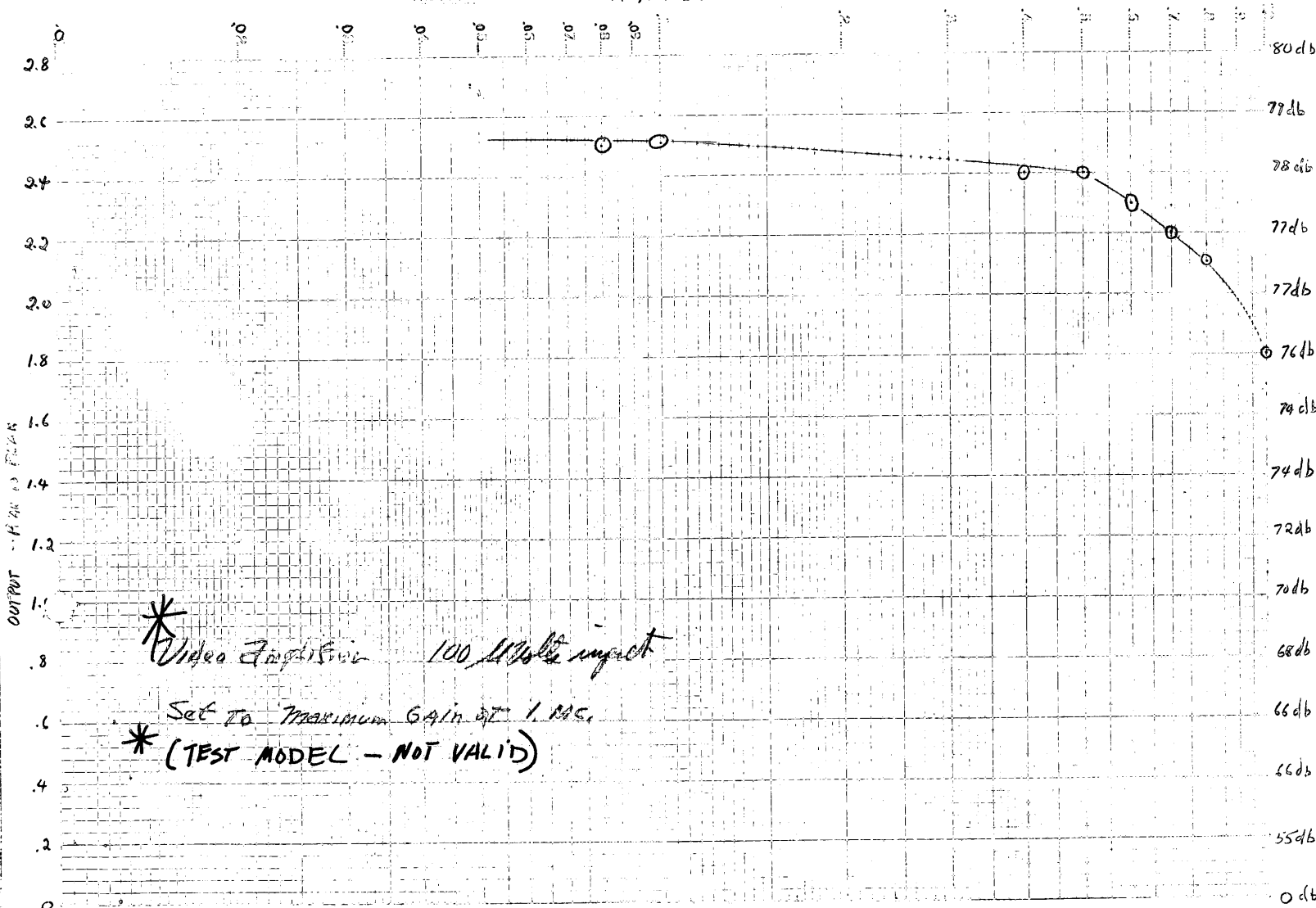


T = AR-105
 PRI = 20 KΩ
 SEC = 400 Ω
 TR = 2N57
 RY = GE
 C = 2μF/100V.

HANDBOOK OF ELECTRONIC DEVICES, V. 1, 1965, 1000-400
 Copyright © 1965, G. S. C. Co.
 MADE IN U.S.A.

Small-Signal Transfer Characteristics of the Amplifier
at 100 MHz

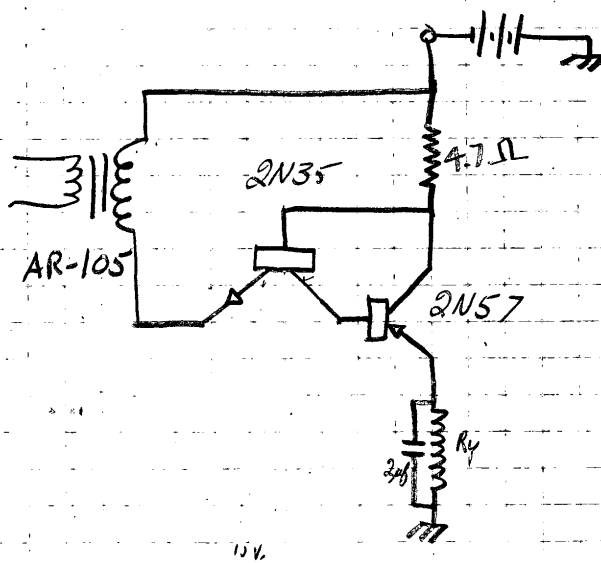
MEGACYCLES



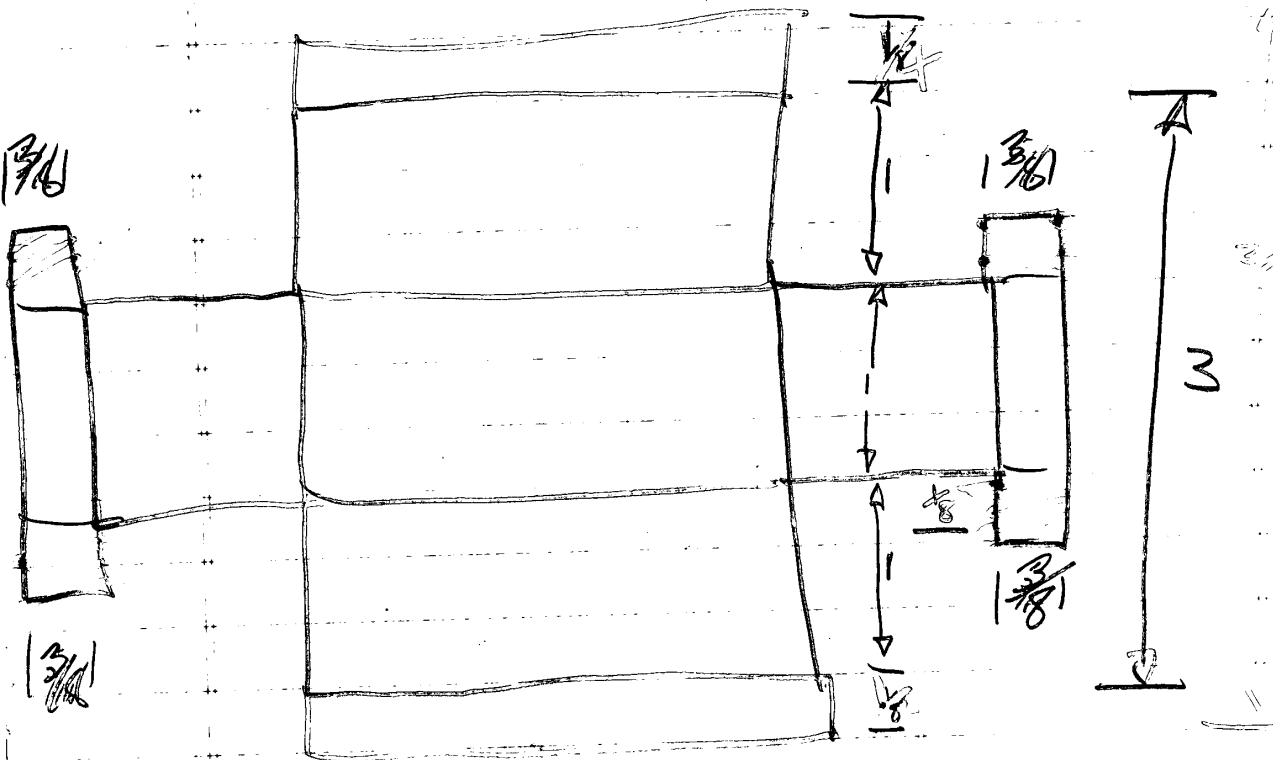
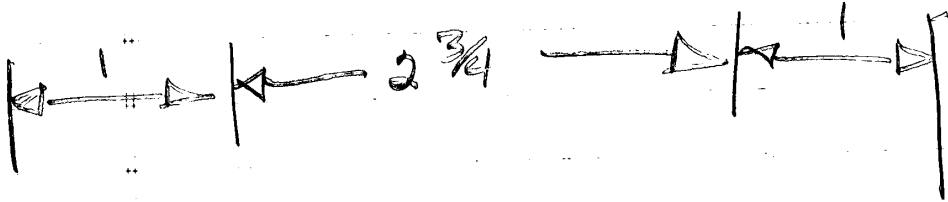
* Video Amplifier 100 MHz input

* Set to Maximum Gain at 1 MHz.
(TEST MODEL - NOT VALID)

Declassified in Part - Sanitized Copy Approved for Release 2012/06/12 : CIA-RDP78-03535A000600020008-4



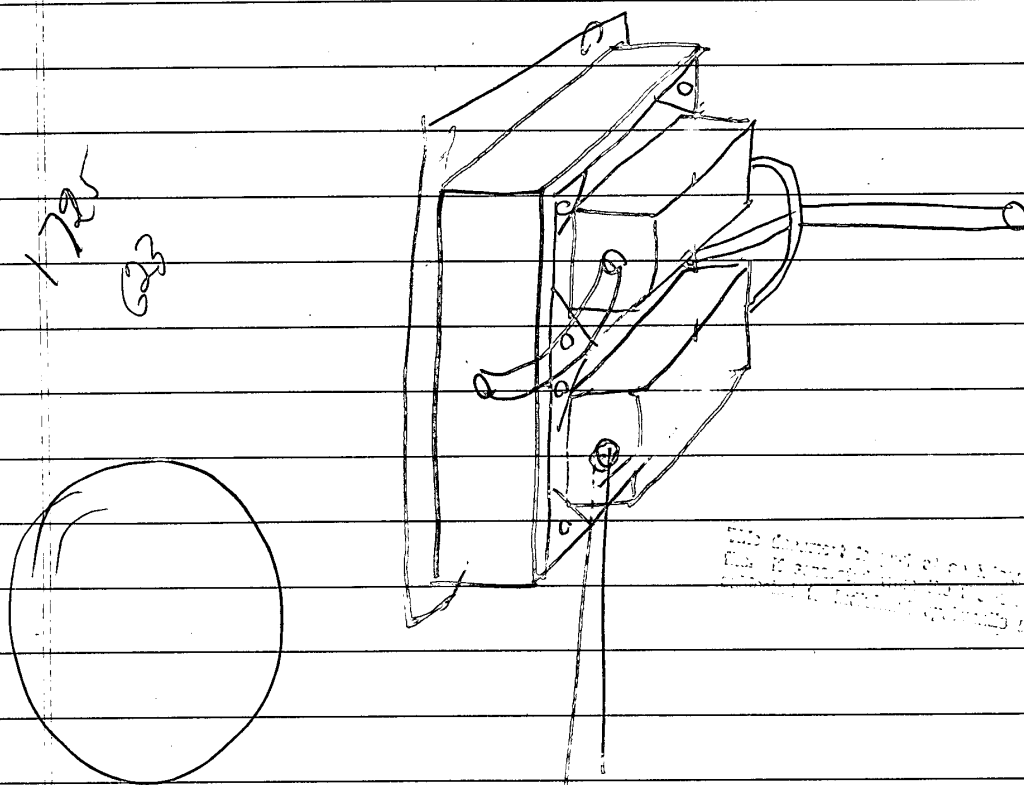
Declassified in Part - Sanitized Copy Approved for Release 2012/06/12 : CIA-RDP78-03535A000600020008-4



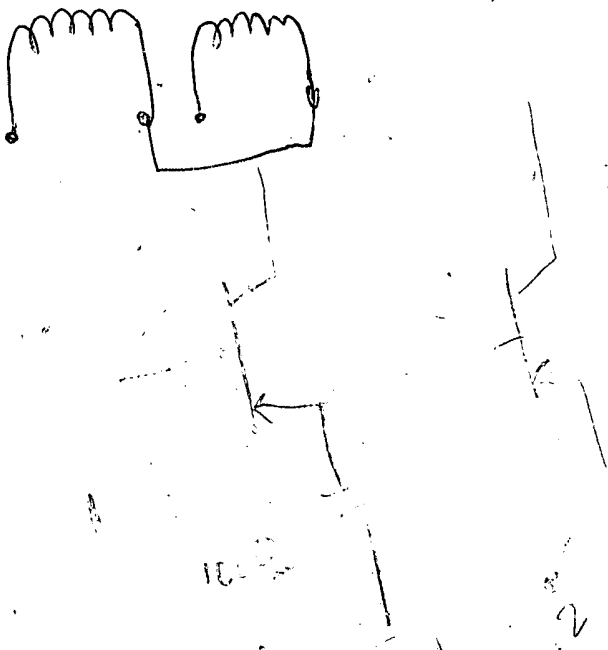
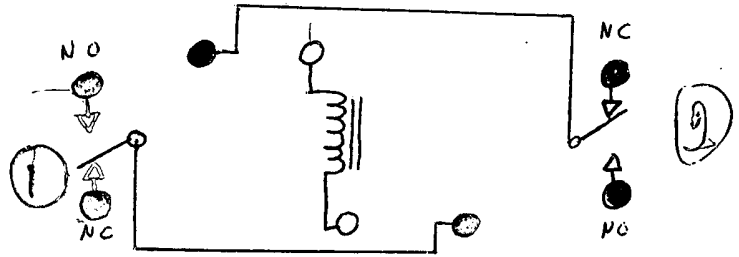
$$\begin{array}{r}
 5 \\
 \frac{5}{8} \\
 + 2 \frac{6}{8} \\
 + 2 \frac{5}{8} \\
 \hline
 4 \frac{11}{8} \rightarrow 5 \frac{7}{8}
 \end{array}$$

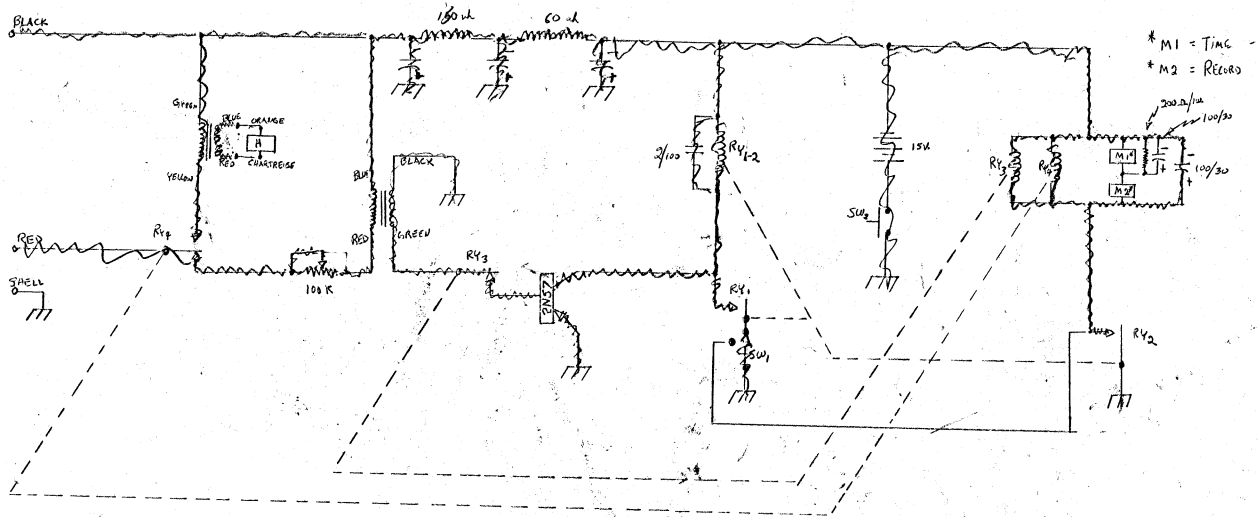
This document is part of an information file. If expanded from this file, it must be subjected to individual security checks.

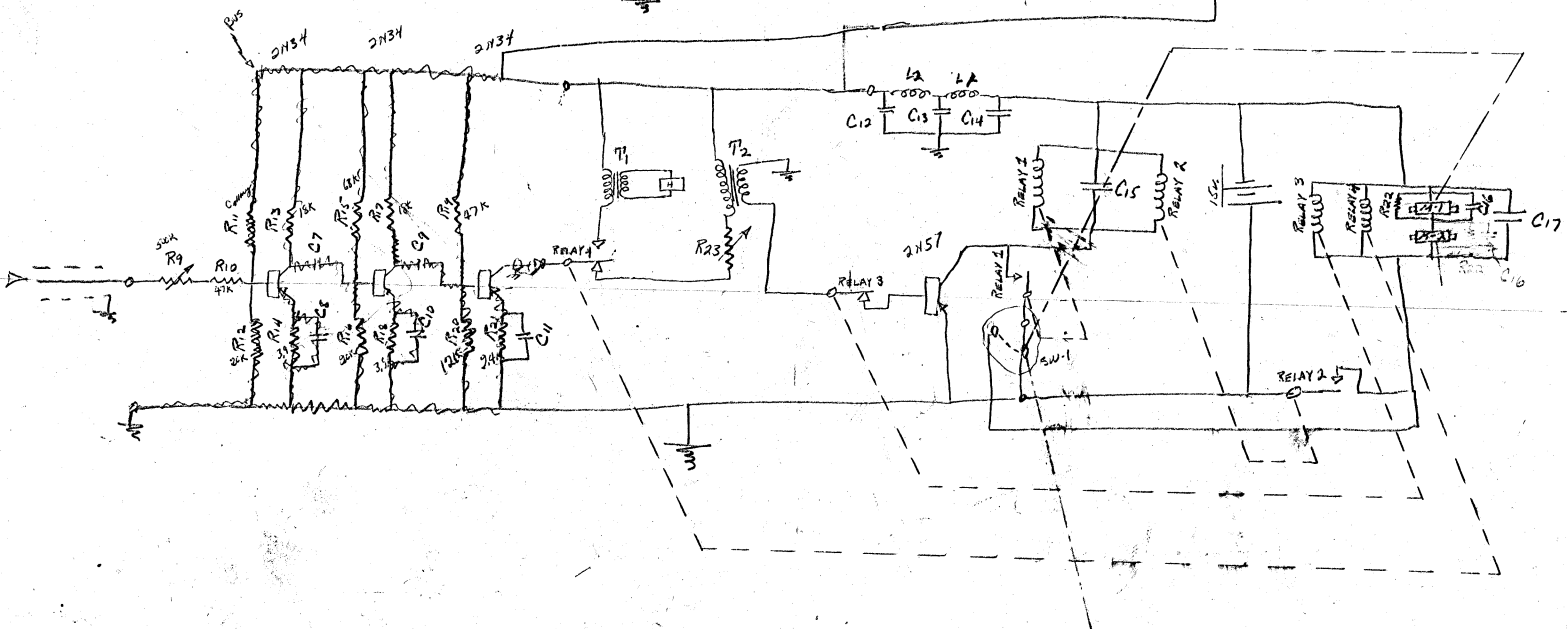
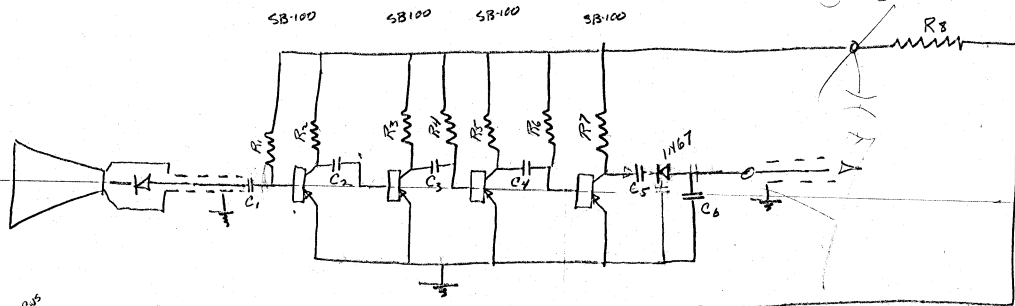
This document is part of an information file. If expanded from this file, it must be subjected to individual security checks.



G.E. Micro-miniature relay
(BOTTOM)







complete circuit



STAT

ACS 23 Mar 56

This document is part of an information
collection system. It is not to be
distributed outside the system.