

~~CONFIDENTIAL~~

1 October 1947

SR-8

# CHINA

(Map Supplement)

## TABLE OF CONTENTS

Administrative Divisions . . . . .	Tab 1
Terrain and Transportation . . . . .	Tab 2
Agricultural Areas . . . . .	Tab 3
Mineral Resources . . . . .	Tab 4
Communist Controlled Areas, 1945-1947 . . . . .	Tab 5
Areas of Politico-Military Control, 15 August 1947 . . . . .	Tab 6
Chinese Civil War Areas—Railroads, 15 August 1947 . . . . .	Tab 7
Manchuria . . . . .	Tab 8
Mongolia . . . . .	Tab 9
Sinkiang . . . . .	Tab 10
Taiwan . . . . .	Tab 11

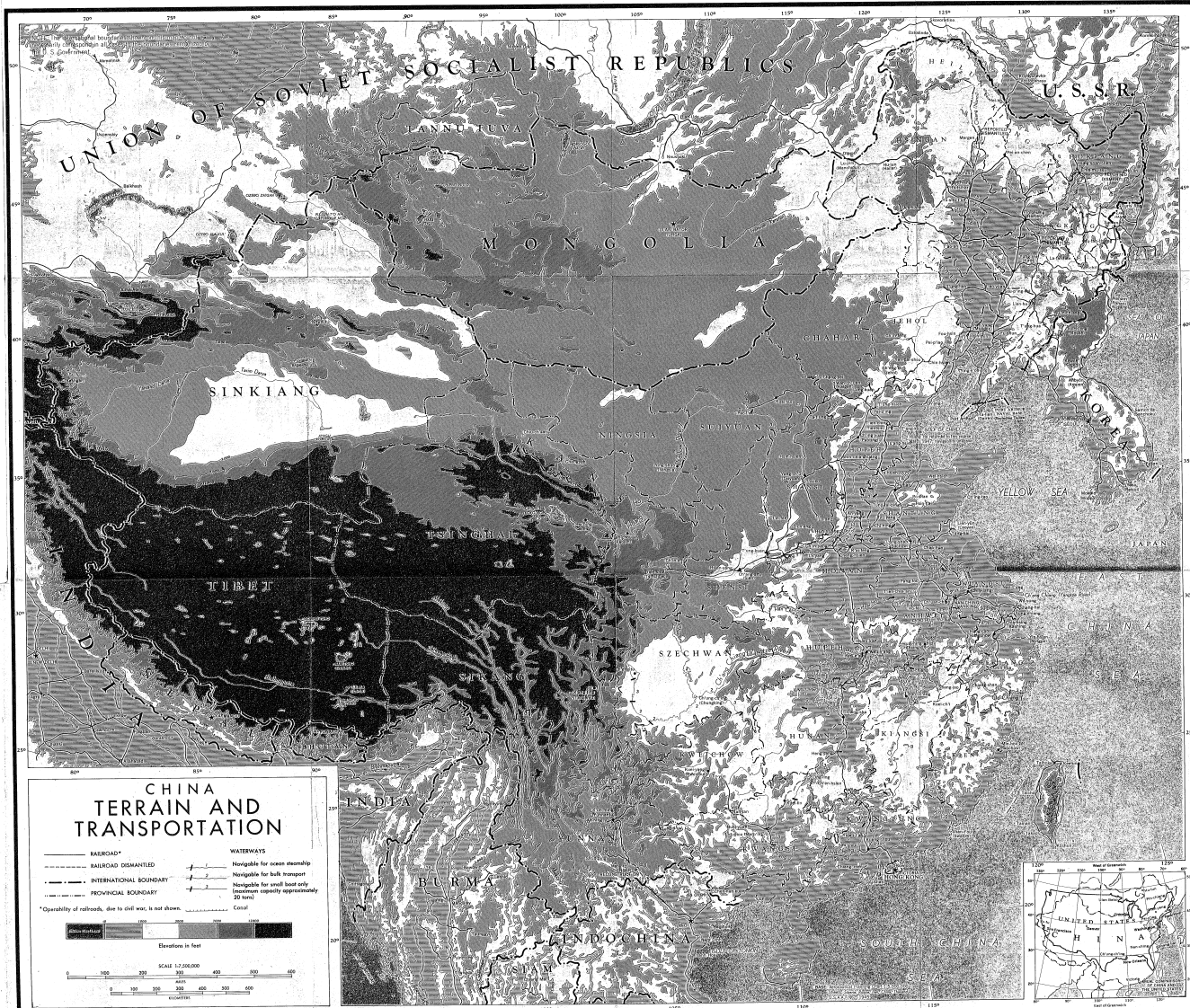
**NOTE:** *Additional copies of these maps may be secured by calling the Map Library Division, Map Branch, Central Intelligence Agency, Executive 6115, Extension 2596. Maps should be ordered by the number which appears in the upper right-hand corner of each map.*

~~CONFIDENTIAL~~





T  
A  
B  
2



T  
A  
B

3



T  
A  
B

4



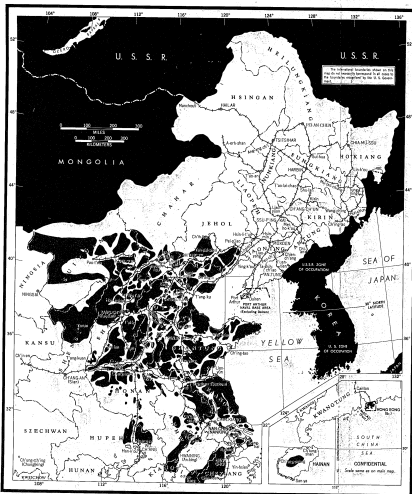


T  
A  
B

5

# CHINA: COMMUNIST CONTROLLED AREAS, 1945-1947

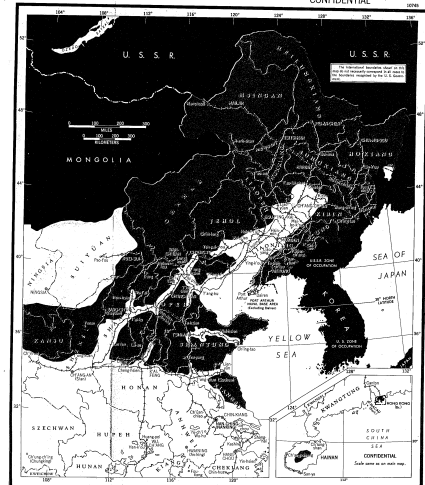
CONFIDENTIAL



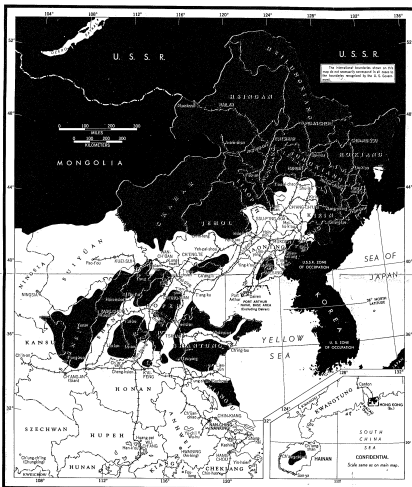
15 AUG. 1945



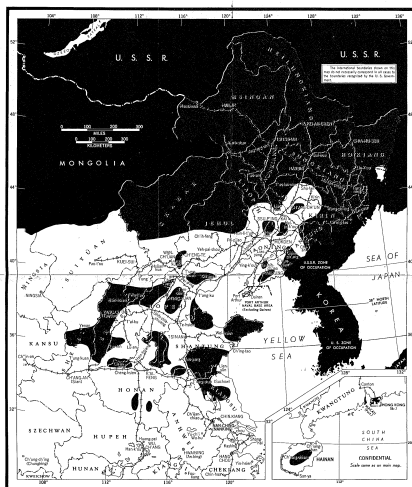
15 JAN. 1946



1 AUG. 1946

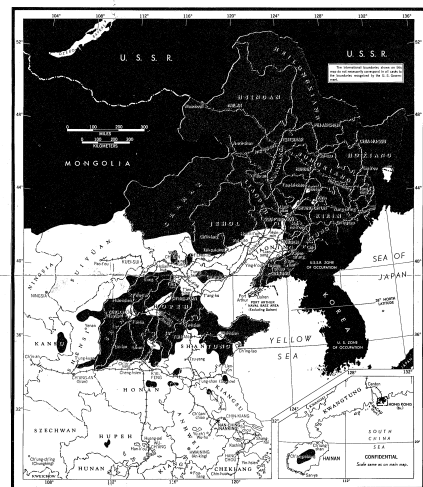


11 NOV. 1946



15 JAN. 1947

CONFIDENTIAL



1 JULY 1947

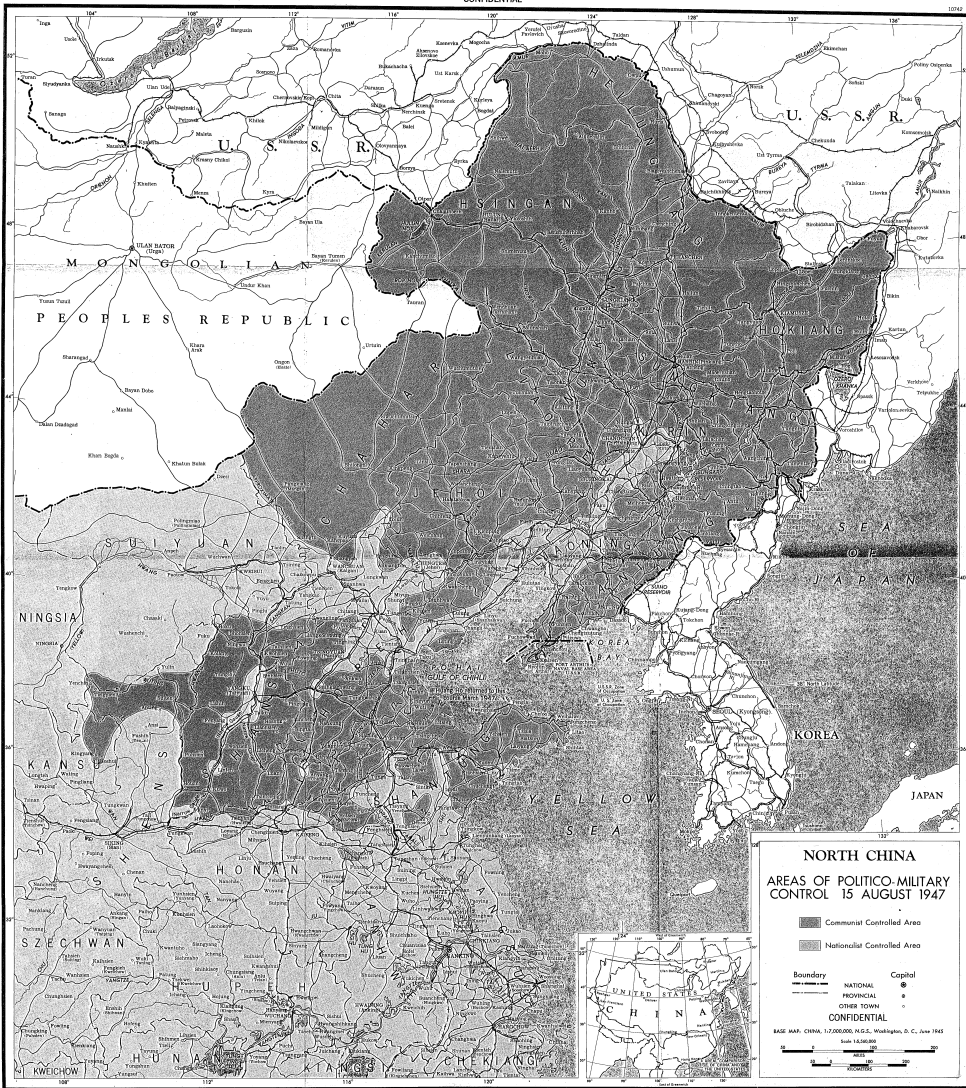
CONFIDENTIAL



T  
A  
B  
6

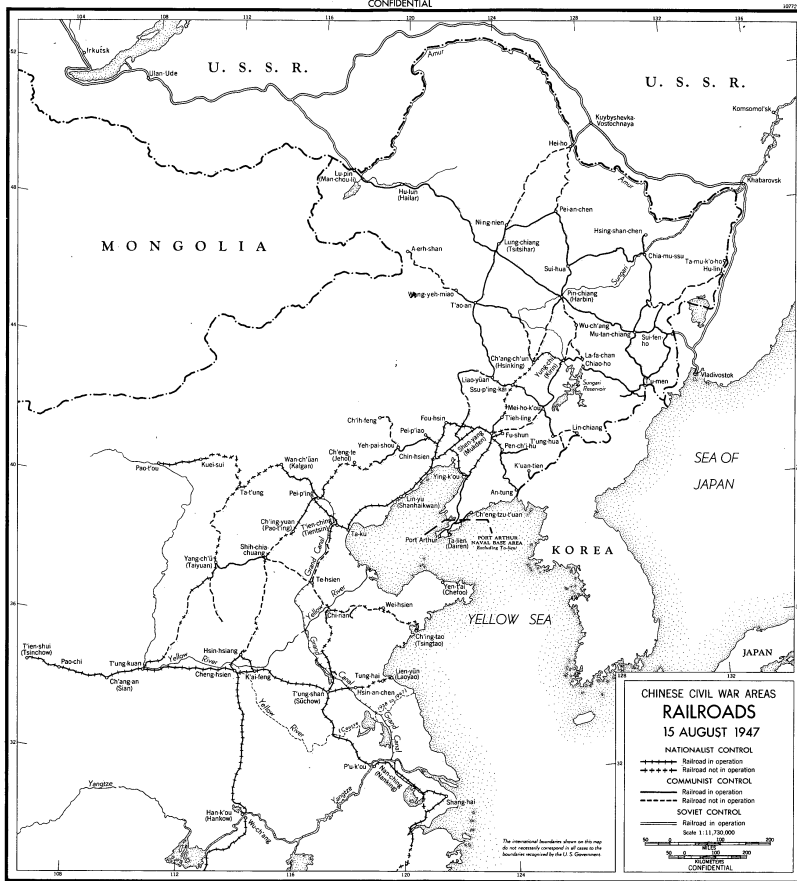


CONFIDENTIAL



T  
A  
B  
7

CONFIDENTIAL

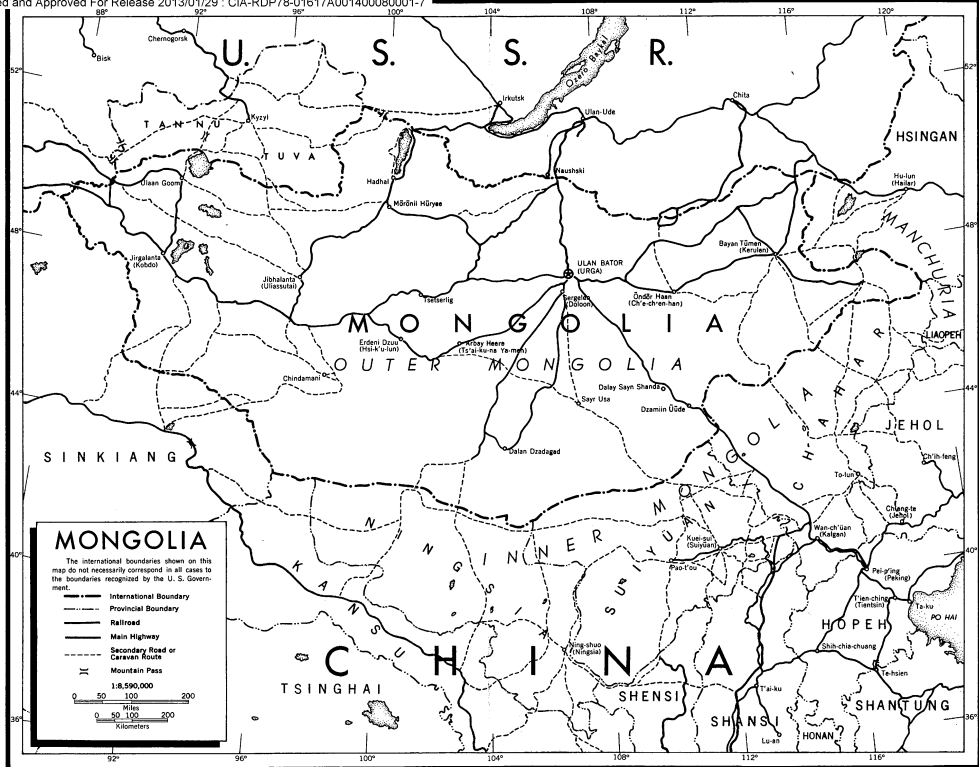


T  
A  
B  
8





T  
A  
B  
9



T  
A  
B  
10



