

~~SECRET~~

CI Memorandum No. 20

6 April 1956

TO: All Area Branches

SUBJECT: Chart of Organizational Structure of the Communist Party of China (CCP)

1. CI/ICD has prepared and reproduced an unclassified chart of the organizational structure of the Communist Party of China, based on the Constitution adopted by the 7th party congress (1945) and on other official Chinese Communist sources. The chart also provides the names of top party officials in the various organizational components.

2. At its last plenary session (October 1955), the Central Committee of the CPC announced that the 8th party congress will be held during the latter part of 1956, at which time the party Constitution will be revised and a new Central Committee elected. While no drastic functional changes or purges are expected, it is probable that the present organizational structure will be modified in response to the changing demands which the "transition to socialism" period has placed on the party; and that many of the older Central Committee incumbents will be replaced by younger party activists who have since 1945 achieved positions of leadership in subsidiary party organs, the New Democratic Youth League, the Government and the military. In addition, then, to its utility as a graphic illustration of the current party structure and hierarchy, this chart can be used as a base point for study of the changes in party organization and personnel assignments.

3. Much information on the overt changes in the CCP ratified at the 8th Congress is expected to be disseminated by the New China News Agency and Radio Peking. Area divisions and field stations are requested to disseminate ~~25X1X7~~ any data received from other sources on the changes.

25X1X

25X1X7

~~SECRET~~

~~SECRET~~

- page two -

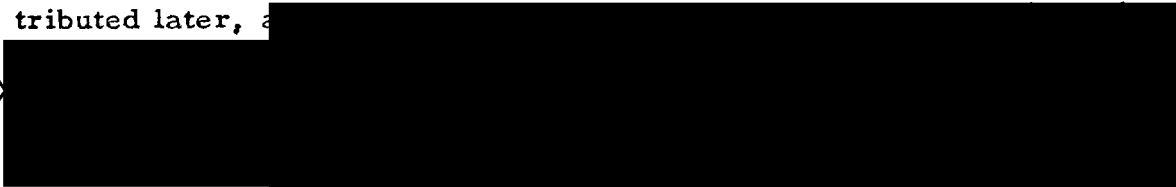
4. The actual existence of the Social Affairs Department, believed to be the party's intelligence organ, has not been confirmed for several years. Many of the overt functions of the United Front Work Department have been assigned to the Chinese People's Political Consultative Conference, the "organization of the People's Democratic United Front" which includes representatives from all the nationalities, the so-called democratic parties, the mass organizations, and the Overseas Chinese. The presence of several of the officers of the United Front Work Department on the reconstituted National Committee of the Political Consultative Conference guarantees CCP control of this super-front organization. Hsing Hsi-ping, Deputy Director of the United Front Work Department, is secretary general of the Political Consultative Conference. Li Wei-han, Director of the United Front Work Department, is also a Vice Chairman of the National Committee of the Political Consultative Conference.

5. For your information, subsequent to publication of the original chart, another deputy director of the United Front Work Department of the CCP -- PING Chieh-san -- has been identified.

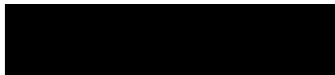
6. It is planned that copies of this chart and the previously distributed chart of the Chinese Communist Government will be distributed later, a

25X1X7

25X1X



25X1X7



25X1A9a

Chief, Counter Intelligence Staff

Attachment (1 chart)

~~SECRET~~

~~SECRET~~

CHART OF THE ORGANIZATIONAL  
STRUCTURE OF THE COMMUNIST PARTY OF CHINA (CCP)  
(April 1956)

1. Attached is a chart of the organizational structure of the Communist Party of China, based on the Constitution adopted by the 7th party congress (1945) and on other official Chinese Communist sources. The chart also provides the names of top party officials in the various organizational components.
2. At its last plenary session (October 1955), the Central Committee of the CPC announced that the 8th party congress will be held during the latter part of 1956, at which time the party Constitution will be revised and a new Central Committee elected. While no drastic functional changes or purges are expected, it is probable that the present organizational structure will be modified in response to the changing demands which the "transition to socialism" period has placed on the party; and that many of the older Central Committee incumbents will be replaced by younger party activists who have since 1945 achieved positions of leadership in subsidiary party organs, the New Democratic Youth League, the Government and the military. In addition, then, to its utility as a graphic illustration of the current party structure and hierarchy, this chart can be used as a base point for study of the changes in party organization and personnel assignments.
3. The actual existence of the Social Affairs Department, believed to be the party's intelligence organ, has not been confirmed for several years. Many of the functions of the United Front Work Department have been assigned to the Chinese People's Political Consultative Conference, the "organization of the People's Democratic United Front" which includes representatives from all the nationalities, the so called democratic parties, the mass organizations, and the Overseas Chinese. The presence of several of the deputy-directors of the United Front Work Department on the reconstituted National Committee of the Political Consultative Conference guarantees CCP control of this super-front organization. Deputy Director Hsing Hsi-ping is secretary general of the Political Consultative Conference.
4. For your information, subsequent to publication of the original chart, another deputy director of the United Front Work Department of the CCP -- Ping Chieh-san -- has been identified.
5. Your comments on the terminology, titles, names and positions of personnel and other suggestions are desired and welcome.

~~SECRET~~

Next 2 Page(s) In Document Exempt

25X1A9a

25X1A8a

**SUBJECT: Organization Charts of the Chinese Communist Government and of the Chinese Communist Party: Additions and Revisions**

1. Attached hereto are copies of (a) a chart of the Chinese Communist Government Organization and (b) a chart of the Chinese Communist Party Organization, showing changes made public at or since the 8th Party Congress of the Chinese CP in September 1956.

2. The following revisions and additions should be made:

A. The Chinese Communist Government Organization

1. First Staff Office (Public Security). Chu Chi-wen, Deputy Director, is probably a Party member.

2. Eighth Staff Office (United Front, etc.) Hsu Ti-hsin, Deputy Director, is now Director in place of Li Wei-han.

3. It is worth noting that Shih Liang, Minister of Justice, Chien Ying, Minister of Supervision, Li Te-chuan, Minister of Public Health, and Ho Hsiang-ning, Chairman of the Overseas Chinese Affairs Commission, are women.

4. Shen Yeng-ping, Minister of Culture, is better known under the name of Mao Tun.

5. To the list of Ministries and Commissions should be added the Scientific Planning Commission with Nieh Jung-chen as Chairman. He is a member of the Central Committee.

6. Religious Affairs Bureau. Ho Cheng-hsiang is a Party member.

7. Personnel Bureau. Chang I-pai is a Party member.

8. The term Central Bureau of Confidential Communications seems to be a mistranslation. The character which has been translated "Communications" should be "Transportation," and the name of this Bureau should probably be Confidential Travel Bureau. Its function is to make the arrangements for travel by important officials of the Chinese Communist Party and/or Government.

9. Bureau of Foreign Experts should read "Bureau for Servicing Foreign Experts." Its function is to provide for the accommodation of foreign (i. e. Russian) experts in China.

10. In the list of members of the National Defense Council the name of Teng Hsiao-ping appears twice. The first listing should be deleted.

11. Yu Chieh is the Governor of Heilungkiang.

12. Although it is mentioned in the Constitution, the Supreme State Conference is not actually a governmental organ. It has no permanent membership, its composition being chosen according to the subject to be discussed. It has no function other than to serve as an audience for important pronouncements by the Chairman of the PRC.

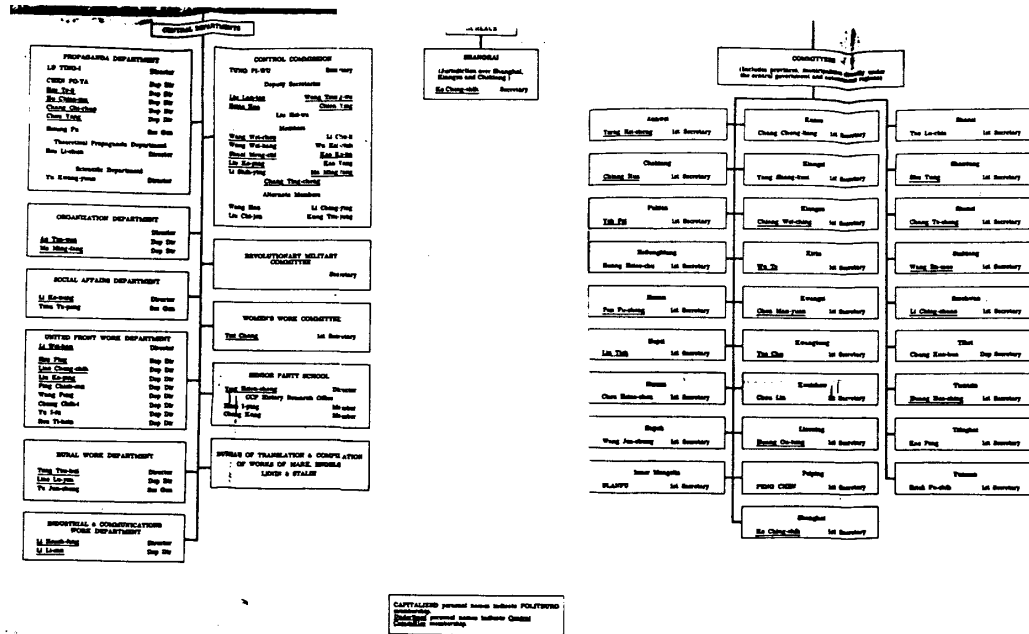
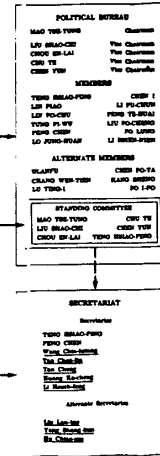
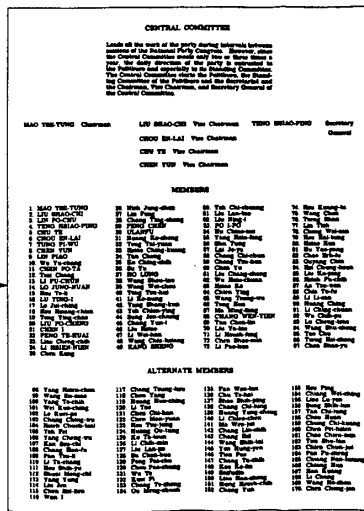
B. The Chinese Communist Party Organization

1. The Propaganda Department. Chao I-min is an additional Deputy Director.
2. The Organization Department. Peng Chen is the Director.
3. United Front Work Department. Hsu Ping is the Party name of the first Deputy Director. His real name is Hsing Hsi-ping.
4. Women's Work Committee. Teng Ying-chao is Second Secretary.
5. To the list of Central Departments should be added the Committee for Work in Government Organizations. Yang Shang-k'un is Secretary and Tseng San is Deputy Secretary.
6. The Industrial and Communications Work Department should be the Industrial and Transport Work Department.
7. The Bureau of Translation and Compilation of the Works of Marx, Engels, Lenin and Stalin. Chih Che is Director, Ch'en Ch'ang-hao and Chiang Chuang-fang are Deputy Directors. (Note: It is reported that in general usage if not formally, the name of Stalin has been dropped.)
8. The Party Committee for Tibet. Fan Ming, Chang Ching-wu and Tan Kuan-san are additional Deputy Secretaries.

CHINESE COMMUNIST PARTY ORGANIZATION

UNCLASSIFIED

8TH NATIONAL PARTY CONGRESS



UNCLASSIFIED



# CHINESE COMMUNIST GOVERNMENT ORGANIZATION

NATIONAL  
(List Abbreviated by Issue-level)

**SUPREME PEOPLE'S COURT**

\*TUNG PI-WU President

\*\*\*Kao Kuo-shih Vice President

\*\*\*Chang Chih-jung Vice President

\*\*\*Ma Hsi-ven Vice President

**SUPREME PEOPLE'S PROCURATORATE**

\*Chang Tzu-chung Chief Prosecutor

\*\*\*Liang Kuo-shih Dep. Chief Proc.

\*\*\*Tsu Chang-wen Dep. Chief Proc.

\*\*\*Li Shih-yung Dep. Chief Proc.

\*\*\*Huang Hsi-hung Dep. Chief Proc.

**STANDING COMMITTEE NATIONAL PEOPLE'S CONGRESS**

\*LIU SHAO-CHI Chairman

\*\*\*Huang Ching-ling Vice Chairman

\*\*\*LIU HO-CHU Vice Chairman

\*LI Chih-shan Vice Chairman

\*LO JUNG-SUAN Vice Chairman

\*Shan Chieh-fu Vice Chairman

\*Kuo Mo-jen Vice Chairman

\*Huang Tai-pai Vice Chairman

\*FENG CHIH Vice Chairman

\*LI Wei-hsin Vice Chairman

\*Chen Shih-hung Vice Chairman

\*Dahl Loren Vice Chairman

\*Saiyid Vice Chairman

\*FENG CHEN Secretary General

(66 members)

**STATE COUNCIL**

\*CHOU EN-LAI Premier

\*\*\*CHEN YUN Vice Premier

\*\*\*LIN PIAO Vice Premier

\*\*\*FENG TE-SHAI Vice Premier

\*\*\*TENG SHIAO-FENG Vice Premier

\*\*\*Tung Tzu-shan Vice Premier

\*\*\*SO LUNG Vice Premier

\*\*\*ULANFU Vice Premier

\*\*\*LI FU-CHUN Vice Premier

\*\*\*LI SHIH-SHIN Vice Premier

\*\*\*Hsu Jen-chieh Vice Premier

\*\*\*FO LFO Vice Premier

\*\*\*Hsi Chang-chung Secretary General

CAPITALIZED personal names indicate POLITICAL membership.

Underlined personal names indicate Central Committee membership.

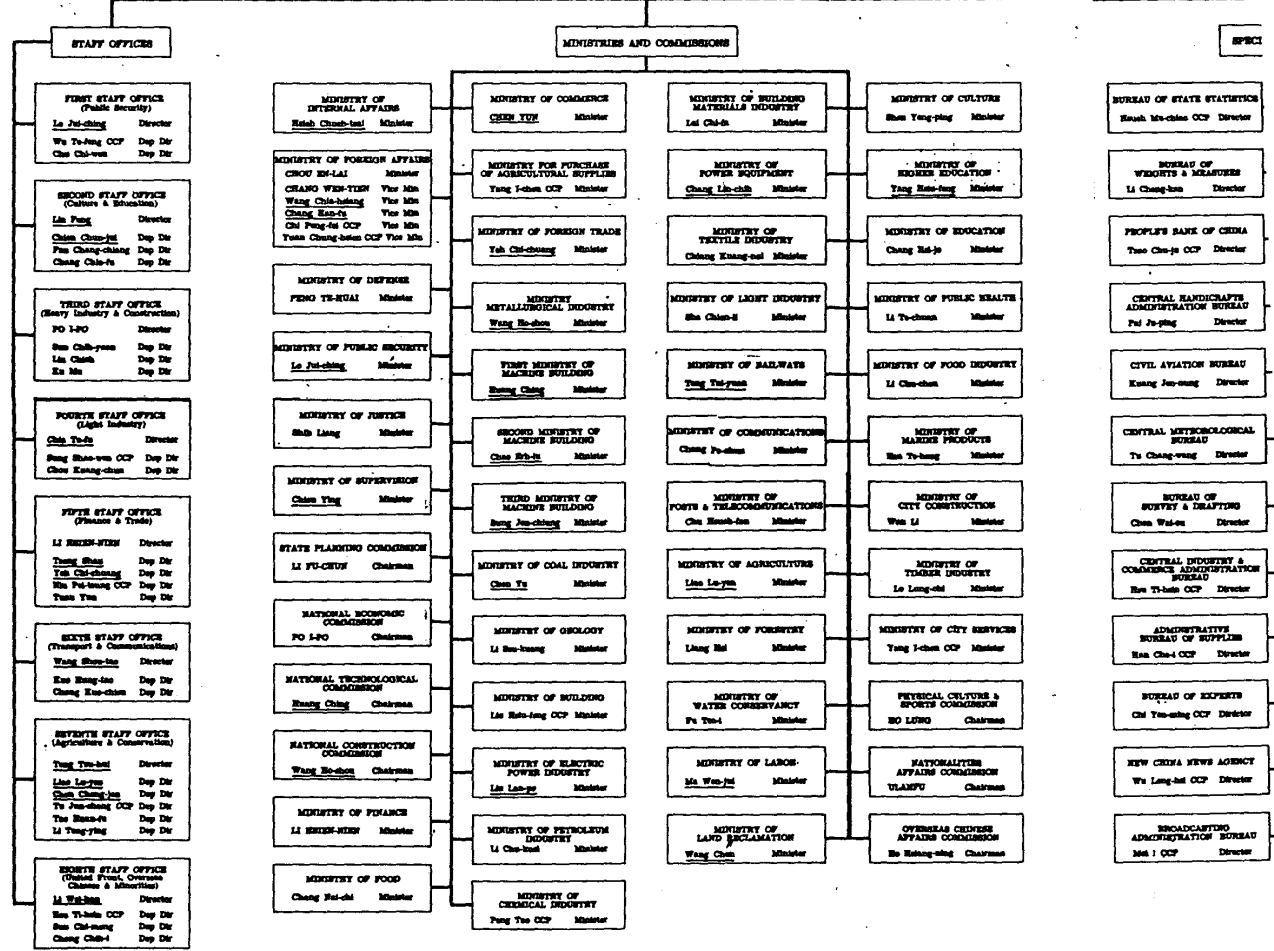
CCP following name indicates Communist Party membership.

\*Elected by National People's Congress.

\*\*Decided on by NPC on Chairman's nomination.

\*\*\*Decided on by NPC on Premier's nomination.

\*\*\*\*Decided on by NPC Standing Committee.



UNCLASSIFIED

N

