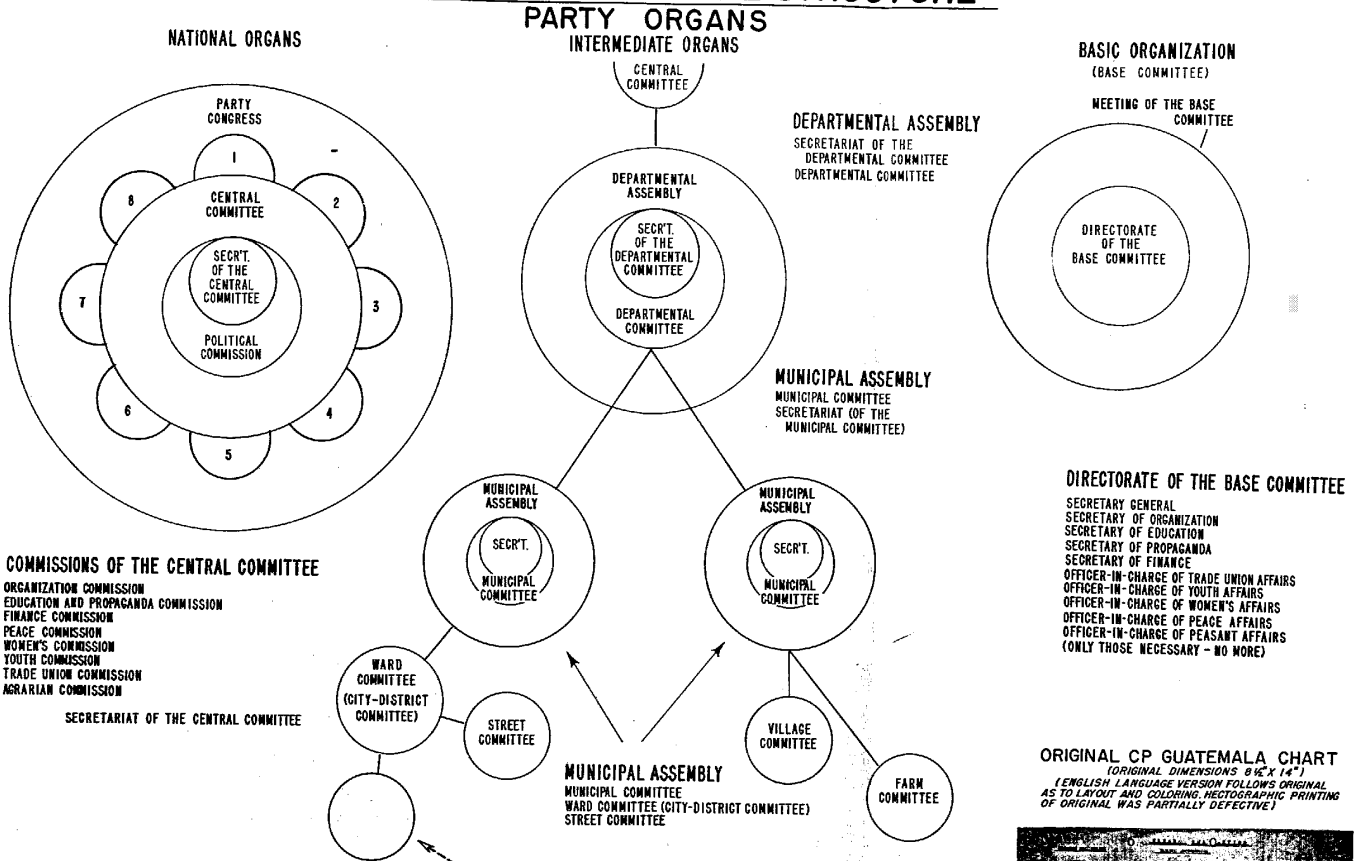


SECRET

Approved For Release 2000/04/14 : CIA-RDP78-00915R000400090007-1

# CP GUATEMALA'S CHART OF ORGANIZATIONAL STRUCTURE



NOTE: This corner of chart partially blank in original. Statutes of CP Guatemala (P.G.T.) provide: Central Committee (CC) chooses from among its members the Political Commission; from among members of latter, CC chooses its (the CC's) Secretariat. This Secretariat is composed of the Secretary General of the CC and the Secretaries agreed upon by the CC. The Secretary General of the CC directs the work of the Political Commission and the Secretariat of the CC.

The eight Commissions listed in the chart may have borne numbers corresponding to the eight semi-circles surrounding the Central Committee.

NOTE: Blank in original. CP Guatemala (P.G.T.) Statutes provide also for "factory" and "business enterprise" (base) committees