

T O P S E C R E T

IN 10167

TOR 25/2035Z FEB 66 CBM

25X1A T O P S E C R E T 252013Z

25X1A IMMEDIATE [] CITE []

25X1A

25X1A [] IDEALIST []

MR. CUNNINGHAM ACTING

1. FYI AT APPROX 1315L, WHILE ON A ROUTINE AIR REFUELING MSN, ARTICLE 342 WAS LOST. THE PROBABLE CAUSE OF ACCIDENT IS STRUCTURAL FAILURE. [] EJECTED SUCCESSFULLY.

25X1A

2. IN VIEW OF MOST RECENT LOSS, ALL IDEALIST ACFT ARE GROUNDED UNTIL FURTHER NOTICE. [] ARTICLES WILL BE NOTIFIED OF THEIR STATUS BY SEPERATE MSG.

25X1A

3. MSG TRAFFIC PERTAINING TO THIS ACCIDENT WILL BE SLUGGED

25X1A

[] AND KEPT WITHIN THE [] CHANNELS.

25X1A

25X1A

4. FOR [] : LOW KEY THIS INSOFAR AS POSSIBLE

[]

25X1A

END OF MSG

IN 10167

T O P S E C R E T

UNITED STATES
DEPARTMENT OF THE INTERIOR
GEOLOGICAL SURVEY

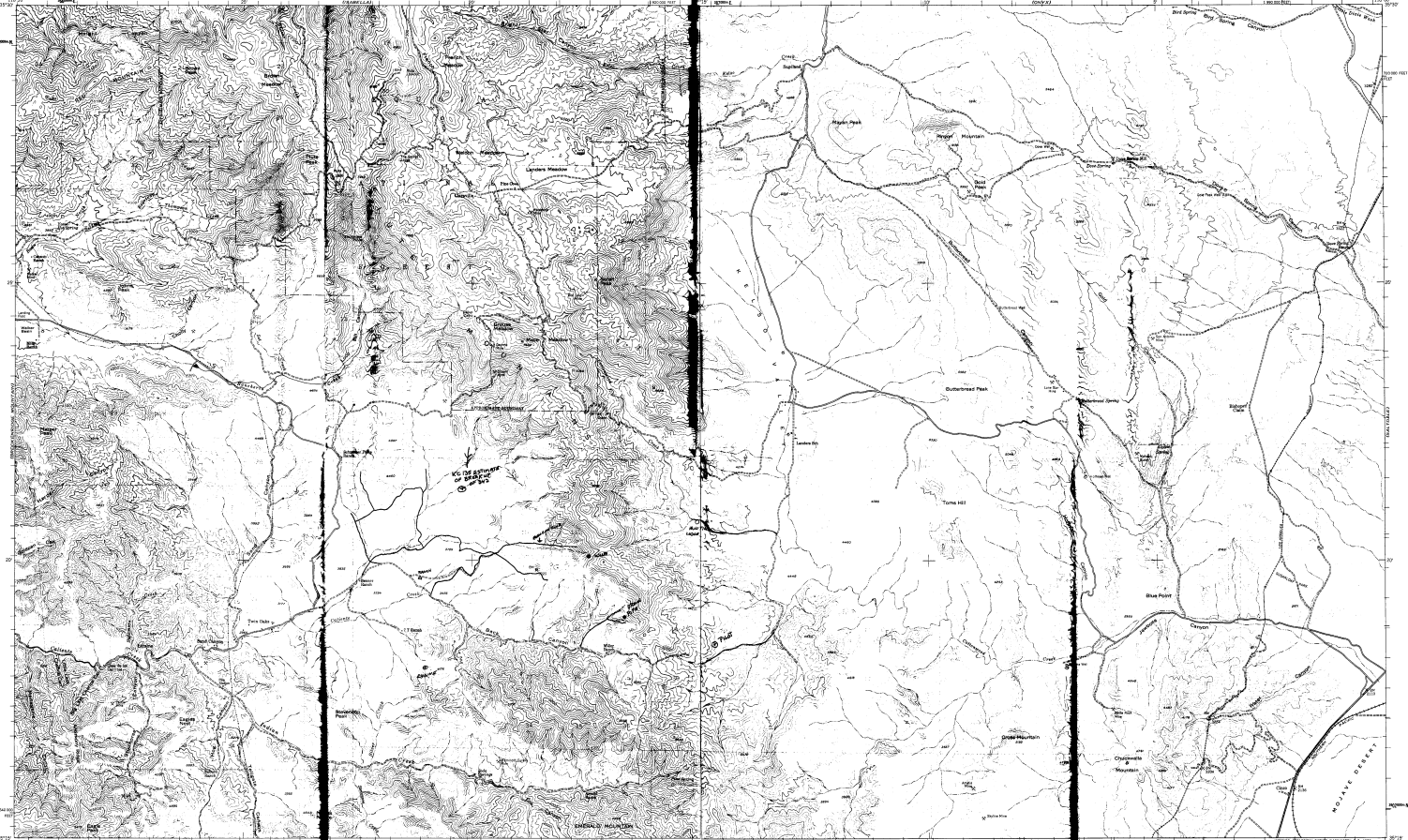
UNITED STATES
DEPARTMENT OF THE ARMY
CORPS OF ENGINEERS

EMERALD MOUNTAIN QUADRANGLE
CALIFORNIA—KERN CO.
7.5-MINUTE SERIES (TOPOGRAPHIC)

UNITED STATES
DEPARTMENT OF THE INTERIOR
GEOLOGICAL SURVEY

UNITED STATES
DEPARTMENT OF THE ARMY
CORPS OF ENGINEERS

CROSS MOUNTAIN QUADRANGLE
CALIFORNIA—KERN CO.
7.5-MINUTE SERIES (TOPOGRAPHIC)



Revised by the Army Map Service
Published by the U.S. Geological Survey
Copyright 1953 and 1954
Approved for release by the Department of Defense
Revised edition: 1957. Some minor changes
in contour interval and spot heights.
Some of the older spot heights are shown
in parentheses.
1:50,000 scale. Vertical datum: Mean Sea Level.
FOR SALE BY U.S. GEOLOGICAL SURVEY, DENVER, COLORADO OR WASHINGTON, D.C.
A POLAR PROJECTION MAP OF THE ARCTIC REGION

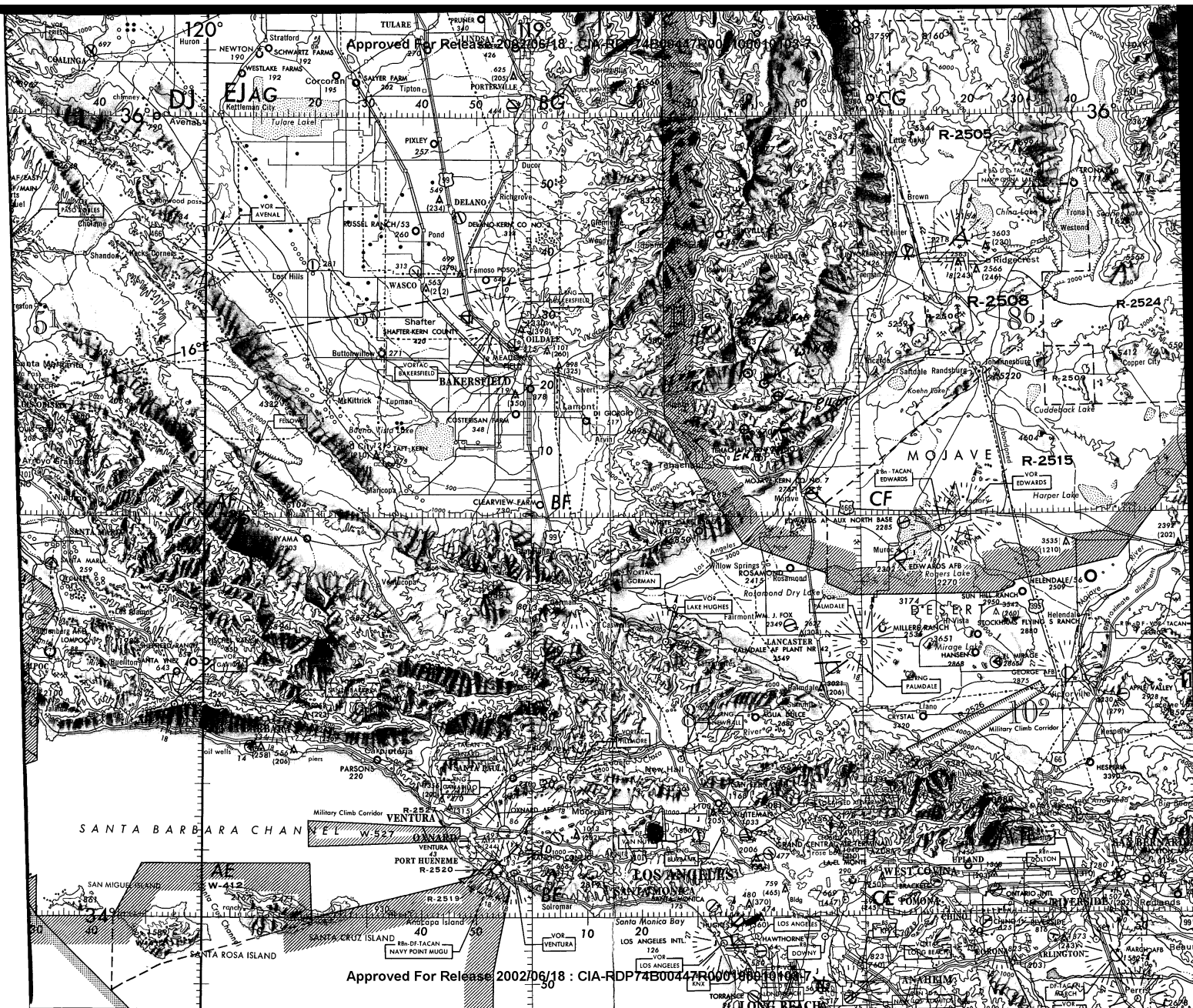
EMERALD MOUNTAIN CALIF.
7.5-MINUTE SERIES
1953

Revised by the Army Map Service
Published by the U.S. Geological Survey
Copyright 1953 and 1954
Approved for release by the Department of Defense
Revised edition: 1957. Some minor changes
in contour interval and spot heights.
Some of the older spot heights are shown
in parentheses.
1:50,000 scale. Vertical datum: Mean Sea Level.
FOR SALE BY U.S. GEOLOGICAL SURVEY, DENVER, COLORADO OR WASHINGTON, D.C.
A POLAR PROJECTION MAP OF THE ARCTIC REGION

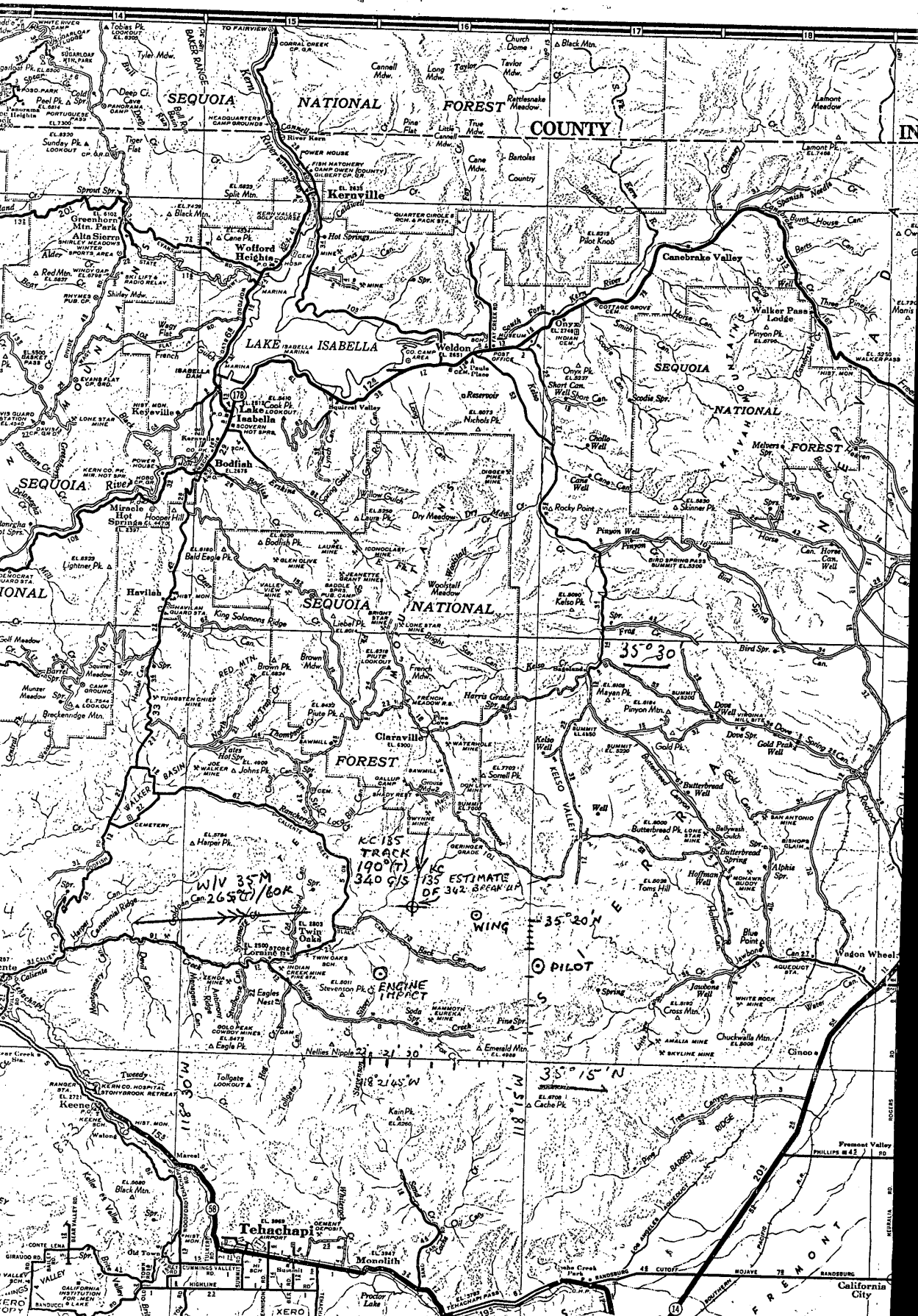
CROSS MOUNTAIN CALIF.
7.5-MINUTE SERIES
1953

Revised by the Army Map Service
Published by the U.S. Geological Survey
Copyright 1953 and 1954
Approved for release by the Department of Defense
Revised edition: 1957. Some minor changes
in contour interval and spot heights.
Some of the older spot heights are shown
in parentheses.
1:50,000 scale. Vertical datum: Mean Sea Level.
FOR SALE BY U.S. GEOLOGICAL SURVEY, DENVER, COLORADO OR WASHINGTON, D.C.
A POLAR PROJECTION MAP OF THE ARCTIC REGION

Approved For Release 2002/06/18 : CIA-RDP74B00447R0001800100017



Approved For Release 2002/06/18 : CIA-RDP74B00447R0001800100017



TOP SECRET

Scotch®

BRAND

recording tape

3M
COMPANY



TOP SECRET

TIME CHART	RECORDING ONE DIRECTION			RECORDING BOTH DIRECTIONS		
	Monophonic 1 Track	Stereophonic 2 Tracks		Monophonic 2 Tracks	Stereophonic 4 Tracks*	
	1 1/4 ips	3 3/4 ips	7 1/2 ips	1 1/4 ips	3 3/4 ips	7 1/2 ips
1200 Ft.	2 hrs.	1 hr.	30 min.	4 hrs.	2 hrs.	1 hr.
1800 Ft.	3 hrs.	1 1/2 hrs.	45 min.	6 hrs.	3 hrs.	1 1/2 hrs.
2400 Ft.	4 hrs.	2 hrs.	1 hr.	8 hrs.	4 hrs.	2 hrs.
3600 Ft.	6 hrs.	3 hrs.	1 1/2 hrs.	12 hrs.	6 hrs.	3 hrs.

*Double these times for 4-track monophonic recording.

THIS TAPE IS RECORDED:

AT 1 1/8 3 3/4 7 1/2

MONOPHONIC

(TRACKS)

STEREOPHONIC

(TRACKS)

THIS TAPE WAS RECORDED ON A REVERE RECORDER:
MODEL T-204-4. KNOB INDICATED 50 CYCLES
TRACK 2 OR "B".

DEBRIEFING OF PILOT OF 342:
Recorded 3 hours after accident.

25X1A

25 Feb 1966.

DEBRIEFING OF KC-135 CREW:
Pilot, Copilot, Navigator,
Boom Operator

GENERAL DISCUSSION
26 Feb 1966.
Time: Aprx, 2 1/2 hours.

THE TERM "SCOTCH" AND THE PLAID DESIGN ARE REGISTERED TRADE-MARKS FOR MAGNETIC TAPE MADE IN U.S.A. BY MINNESOTA MINING AND MANUFACTURING COMPANY, ST. PAUL 19, MINN.

NOTICE: Buyers shall determine that contents are proper kind for intended use. If defective in the manufacture, labeling or packaging, contents will be replaced. There are no other warranties, expressed or implied.

Patented under one or more U.S. patents: 2654681, 2711901.

Magnetic Products Division



TOP SECRET

Scotch[®]

BRAND

recording tape

3M
COMPANY

TOP SECRET

TIME CHART	RECORDING ONE DIRECTION			RECORDING BOTH DIRECTIONS		
	Monophonic 1 Track	Stereophonic 2 Tracks		Monophonic 2 Tracks	Stereophonic 4 Tracks*	
	1 1/2 ips	3 3/4 ips	7 1/2 ips	1 1/2 ips	3 3/4 ips	7 1/2 ips
1200 Ft.	2 hrs.	1 hr.	30 min.	4 hrs.	2 hrs.	1 hr.
1800 Ft.	3 hrs.	1 1/2 hrs.	45 min.	6 hrs.	3 hrs.	1 1/2 hrs.
2400 Ft.	4 hrs.	2 hrs.	1 hr.	8 hrs.	4 hrs.	2 hrs.
3600 Ft.	6 hrs.	3 hrs.	1 1/2 hrs.	12 hrs.	6 hrs.	3 hrs.

*Double these times for 4-track monophonic recording.

THIS TAPE IS RECORDED:

AT 1 1/8 3 3/4 7 1/2

MONOPHONIC

(TRACKS)

STEREOPHONIC

(TRACKS)

THIS TAPE WAS RECORDED ON A SONY RECORDER
MODEL 464. SPEED KNOB INDICATED 9.5 ON 60 CYCLES.
TRACK 1 OR "A" TRACK.

DEBRIEFING OF PILOT OF 342:
Recorded 3 hours after accident.

25X1A

25 Feb 1966.

DEBRIEFING OF KC-135 CREW:
Pilot, Copilot, Navigator,
Boom Operator.

GENERAL DISCUSSION
26 Feb 1966.
Time: Aprx. 2 1/2 hours.

THE TERM "SCOTCH" AND THE PLAID DESIGN ARE
MARKS FOR MAGNETIC TAPE MADE IN U.S.A. BY
AND MANUFACTURING COMPANY, ST. PAUL 19, MINN.

NOTICE: Buyers shall determine that contents are pro-
perly used. If defective in the manufacture, labeling or pack-
aging, the tape shall be replaced. There are no other warranties, expressed or im-

Patented under one or more U.S. patents: 2654681, 2711901.

TOP SECRET

Magnetic Products Division

3M
COMPANY