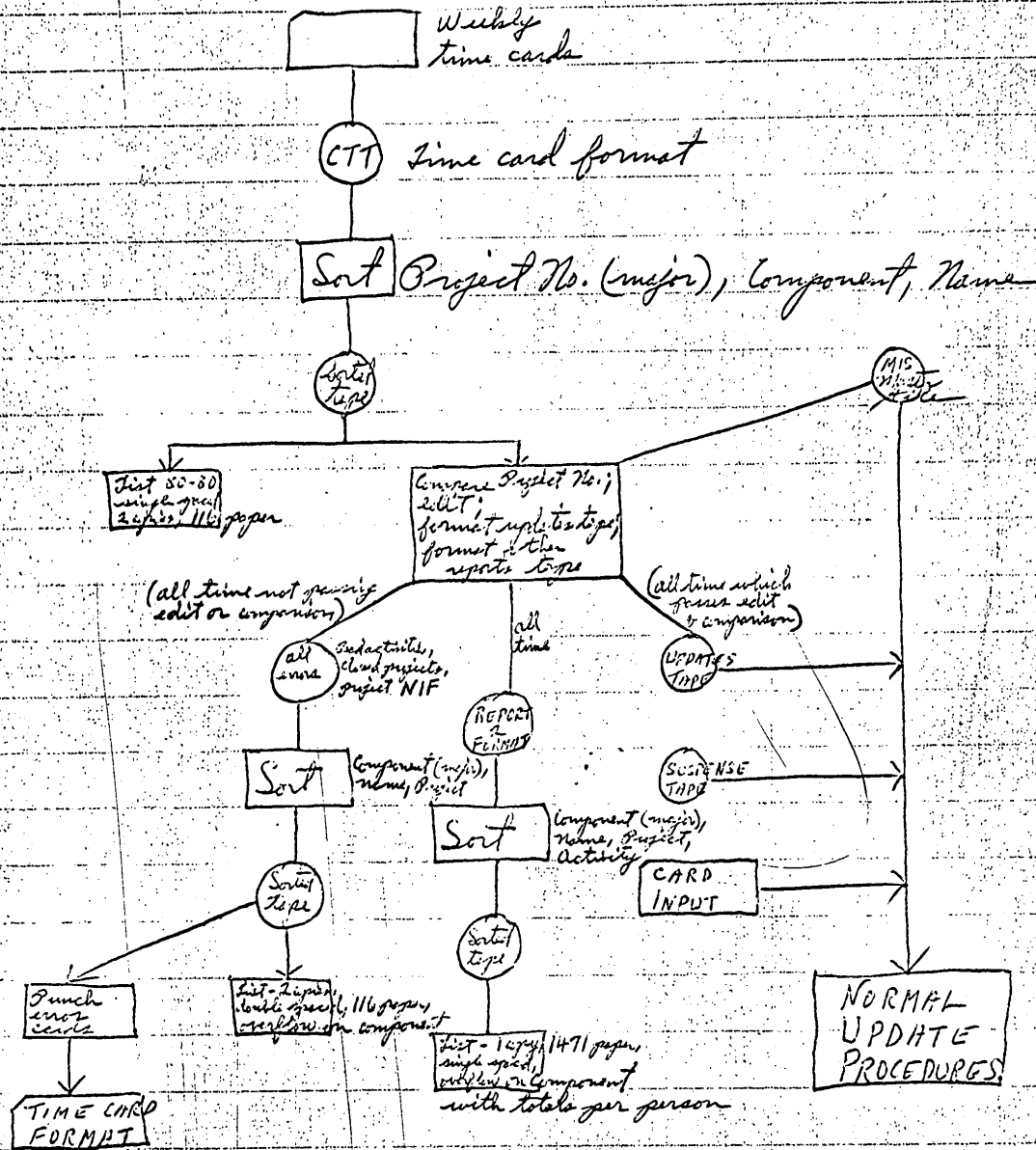


17 August '70



Errors in "A&B" records are those that deal with time charged against non-existing project numbers, time charged against closed projects or time charged against the wrong project.

Errors in the "C" records are those of the type where time has been charged against a project where a work phase notice has not been submitted or against a non-existing component number.

Errors in the "D" are those dealing primarily with the weekly man-hour input. They can be of any variety dealing with improper name, badge #, grade, man-hours, project number, activity codes, overtime, etc.

Attachment D

ERROR CODES

Error Codes listed herein will be assigned during the update processing of the MIS Master File. They may appear on:

(a) Report 660277-001. Error Codes on this report indicate that the record was rejected during the Card-to-Tape processing because of unacceptable field content.

(b) Report 660277-010. Error Codes on this report indicate that for the assigned reason the concerned record could not be processed against the MIS Master File and ~~was~~ ^{was} dropped.

<u>Code</u>	<u>Reason</u>
200	Project Change Notice did not match Master File record
201	Work Phase Change Notice did not match Master File record
202	"B" Record Delete did not match Master File record
203	"D" Record Delete did not match Master File record
204	"E" Record Delete did not match Master File record
205	Change "A" Record did not match Master File record
206	Change "B" Record did not match Master File record
207	Change "C" Record did not match Master File record
208	Change "D" Record did not match Master File record
209	Change "D" Record did not match Master File record
210	Project Delete Record did not match Master File record
211	Work Phase Delete Record did not match Master File record
212	Duplicate "A" Record

SECRET

Page 1 Attach. D Feb 69

<u>Code</u>	<u>Reason</u>
213	Missing "A" Record (File contains generated record)
214	Duplicate "B" Record
215	Missing "B" Record (File contains generated record)
216	Invalid record type code (not A, B, C, D, or E)
217	Invalid Transaction Code
218	Invalid Action Code
219	Project Number not numeric
220	Missing data
221	Project suffix field not alphabetic or blank
222	Date not numeric
223	Component not alphanumeric
224	Activity not numeric
225	Incorrect pay grade
226	Duplicate "C" record
227	Incorrect record content
228	Estimated man-hours not numeric or blank
229	Invalid component
230	Illegal project block for NPIC component
231	Illegal Activity Code for "Leave" project number
232	Illegal Activity Code for NPIC project and component
233	Illegal project block for SPAD component
234	Illegal Activity Code for SPAD project & component
235	Illegal Activity Code for IAS project & component
236	Illegal project block for IAS component

Page 2 Attach. D, Feb 69

Page Denied